

**RF/Coaxial Connectors** **Amphenol**  
 online catalog

[HOME](#)

**Searches**

family

part

cable type

cross reference

**Information**

process info request

email

[Part Information](#) | [Specifications](#) | [Line Drawings](#)



**Part Information:**



**Part Number:** 908-22100

**Description:** MicroMate Edgecard Jack

**Family:** MicroMate

Click below to add part to your request list.  
 When you have finished browsing, click "Process Info Request" button.

Add to Information Request List



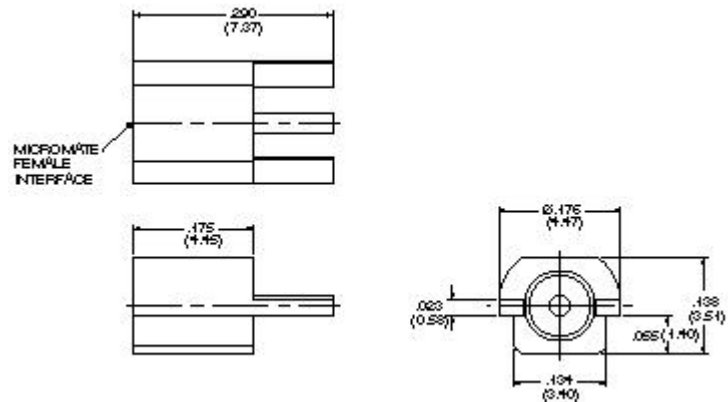
**Specifications**

Electrical		
	CECC22000	Test Requirement
Impedance		50 Ohm
Frequency Range		DC thru 6 GHz
VSWR <u>SMT and Edgecard (Mated Pair)</u> DC - 4 GHz 4-6 GHz	4.41	1.15 Max 1.40 Max
<u>Cabled</u> Straight, Semi-Rigid Straight, Flex Right Angle, Semi-Rigid Right Angle, Flex		1.15 Max 1.20 Max 1.20 Max 1.25 Max

<b>Dielectric Withstanding Voltage (at Sea Level) Working Voltage (at Sea Level)</b>	4.4.5	500 V rms. 50 Hz
	4.4.4	less than or equal to 170 B rms, 50 Hz
<b>Insulation Resistance</b>	4.4.4	greater than or equal to 500 M ohm
<b>Contact Resistance (Center Conductor)</b>	4.4.2	less than or equal to 10 M ohm
<b>Contact Resistance (Outer Conductor)</b>	4.4.3	less than or equal to 5 M ohm
<b>Environmental</b>		
	<b>CECC22000</b>	<b>Test Requirement</b>
<b>Temperature Range</b>		-40° thru 90°
<b>Temperature Shock</b>	4.6.7	Mil-STD-202, Method 107
<b>Humidity</b>	4.6.6	Mil-STD-202, Method 103, Condition B
<b>Vibration</b>	4.6.3	3 cycles, 3 opposite directions, 10-150 Hz, 10-60 Hz: 0.75mm/0.30 in., 60-150 Hz 10G's
<b>Mechanical Shock</b>	4.6.4	Mil-STD-202, Method 213, Condition B
<b>Mechanical</b>		
	<b>CECC22000</b>	<b>Test Requirement</b>

<b>Engagement Force</b>	4.5.4	less than or equal to 3.4 lbs.	
<b>Disengagement Force</b>	4.5.4	1.4 lbs. to 3.4 lbs.	
<b>Contact Captivation</b>	4.5.2	2.3 lbs.	
<b>Durability (Machined)</b>	4.7.1	greater than or equal to 500 cycles	
<b>Material</b>			
	<b>Standards</b>	<b>Material</b>	<b>Plating</b>
<b>Leads</b>	QQ-C-530	BeCu	Gold
<b>Contact Socket</b>	QQ-C-530	BeCu	Gold
<b>Outer Conductor</b>	QQ-C-530	BeCu	Gold
<b>Housing (SMT)</b>		Liquid Crystal Polymer	
<b>Insulator</b>	ASTM-D1457	PTFE	

 **Line Drawing**



<b>Product Information</b>	
<b>Body Plating:</b>	Gold over Nickel
<b>Contact Plating:</b>	Gold over Nickel
<b>Dielectric Material:</b>	TFE or equiv per MIL-P-19468A