

## Start Here

- 1 CHOOSE**  
the smart device you will be using with Teddy  
Apple® device  OR  Android™ device

- 2 GO TO**  
**www.myfriendteddy.com/instructions**  
for full video instructions

- 3 GET APP**  
Search for "My friend Teddy" on the  
App market place of your chosen device.  
Download "My friend Teddy" APP onto your  
chosen smart device



**As of the year 2015, some of the common smart devices that can be used are:**

iPhone 6 & 6 Plus	Nexus 7 (2012 version)
iPhone 5 & 5s	Nexus 7 (2013 version)
iPhone 4 & 4s	Samsung Galaxy Note 10.1
iPad Air (1 & 2)	Nexus 5
iPad 4th generation	Samsung Galaxy Note 3
iPad 3rd generation	Samsung S3
iPad 2	Samsung S5
iPad mini (1, 2 & 3)	LG G2
iPod touch 5th generation	Sony Z1
	Asus PadFone 2
	HTC One

Check [www.myfriendteddy.com/support](http://www.myfriendteddy.com/support) for complete list.

If you are using Apple® DEVICE search on



If you are using Android™ DEVICE search on



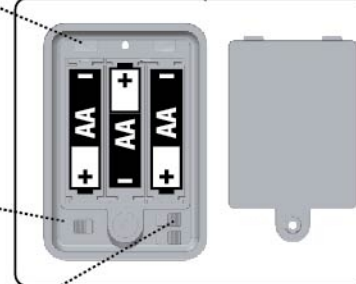
- 4 INSTALL & SWITCH ON**

Unscrew the battery door.  
Install 3xAAA / LR6 batteries.  
(Batteries not included)  
Replace the battery door.

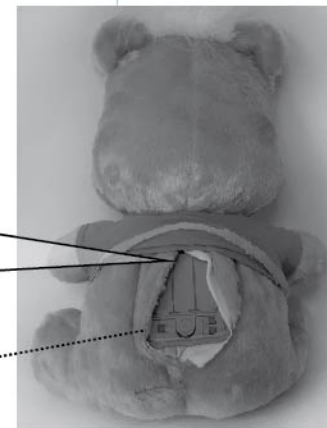
TURN Teddy ON  
Teddy is now ready to  
pair with your smart device.

Select the language  
of your choice

Battery Box



ON/OFF



Speaker

Motion Sensor

Touch Sensor

Microphone

Battery Safety information:  
Different types of batteries or new and used batteries are not to be mixed. Non-rechargeable batteries are not to be recharged.  
Rechargeable batteries are to be removed from the toy before being charged. Rechargeable batteries are only to be charged under adult supervision. Exhausted batteries are to be removed from the toy. Supply terminals are not to be short-circuited. Batteries are to be inserted with the correct polarity. Do not mix alkaline, standard (Carbon-Zinc), or rechargeable (Nickel-Cadmium) batteries.

- 5 PAIRING**  Bluetooth®

iOS Device 

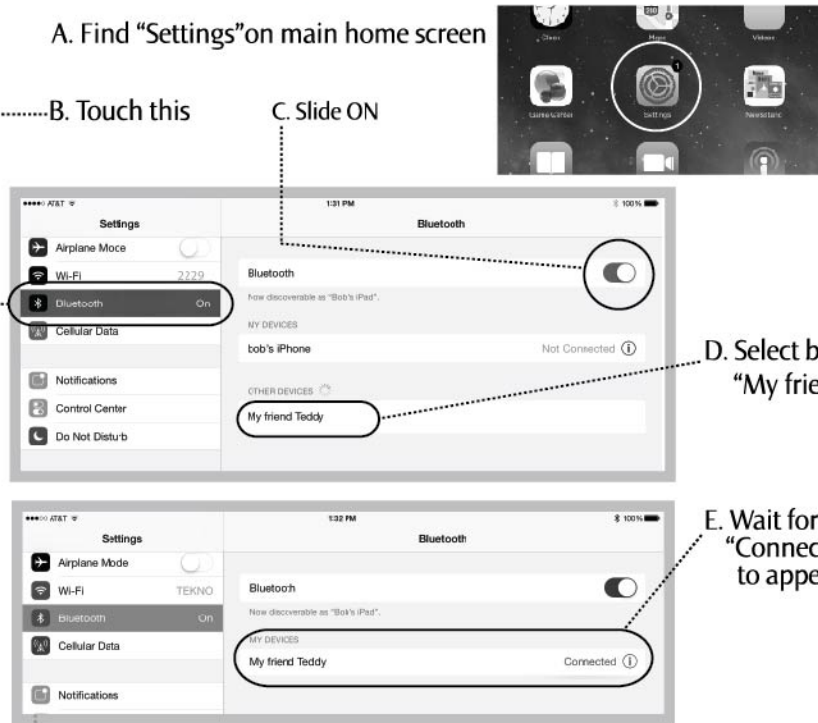
A. Find "Settings" on main home screen

B. Touch this

C. Slide ON

D. Select by touching  
"My friend Teddy"

E. Wait for  
"Connected"  
to appear.



\* These screens may vary across devices.



Android™ Device

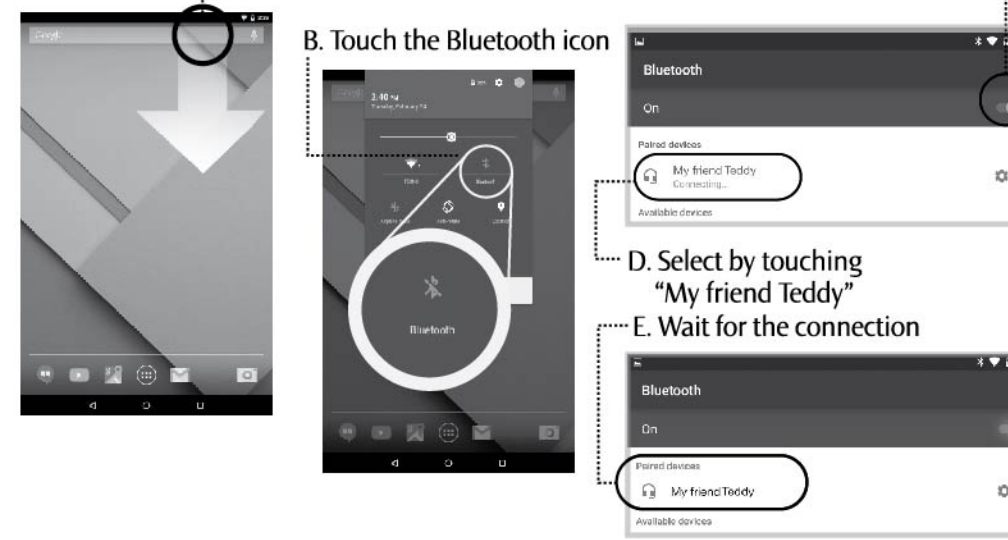
A. Touch here and slide down  
from main screen

B. Touch the Bluetooth icon

C. Slide ON

D. Select by touching  
"My friend Teddy"

E. Wait for the connection



\* These screens may vary across devices.

- 6 LAUNCH APP**

Start Teddy talking  
Touch to say  
Goodbye



\* These screens may be different from the actual app.

Touch for information

Indicated Bluetooth®  
Connection

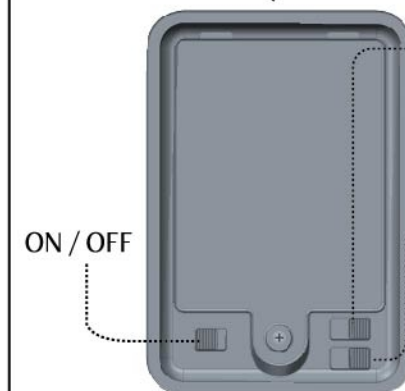
Story Time

Activities

Family Album

## Useful Information

Battery Box



Selecting a language  
Move this switch to select  
the language you want  
Teddy to speak.

Mouth adjustment  
Some smart devices may be at  
lower volume level to make  
the mouth move properly.  
Move the switch to find the  
one that works best for you.

## More useful information:

**Can I run Teddy's app and another app at the same time?**

If your operating system allows you to, Teddy's app works no differently than any other app you would have on your smart device.

**Does Teddy speak different languages?**

Yes, you can download alternative versions of the app to play with Teddy in different languages. Some languages require you to pay a small fee. Please note you can only run one version of the app at a time.

## What can I do with Teddy?

**Activities**

- Puzzle Challenges  
Match shapes, learn  
ABC's, Math
- A Day at the Zoo  
Learn about animals
- Fish Bowl Fun  
Learn about colors,  
hand/eye coordination

**Story Time**

Teddy has lots of stories  
to tell. Choose a story for  
Teddy to share with you.  
Follow along and look  
at the pictures.  
Touch area on the  
picture and Teddy will  
tell you more!

**Photo Albums**

Create your own family  
photo album and answer  
a few questions.  
Teddy will then know  
your family members  
and say something fun  
about them!

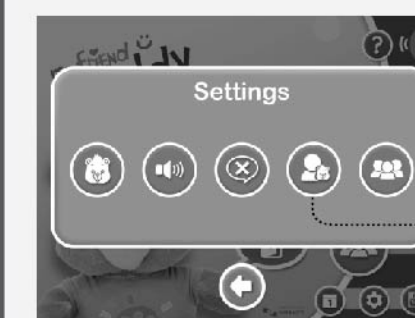
## Personalizing Teddy for your child

This is where the magic happens. Fill out the questions and let Teddy come up with many fun statements to entertain and amuse your child!

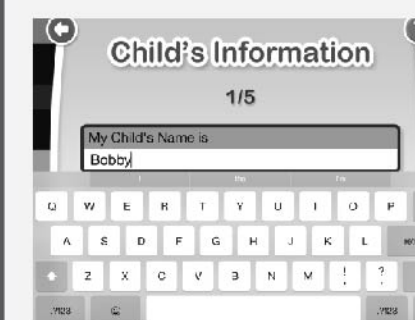
NOTE : You can do this without being connected to Teddy.



1. Go to the main page and Touch the SETTINGS icon



2. Touch the symbol of  
a Child with a Bear



3. You will answer questions about  
your child in the Child's information  
page. Touch the white box under each  
question and the keyboard will pop up.  
You will see a "hint" answer to give you  
a suggestion how to answer the  
question. Type in your answer and  
touch "return" on the Keyboard

4. Listen to how the words you typed are pronounced. Sometimes you may want to adjust the spelling to make it sound better to you. You can spell the word any way you like as long as it sounds best to you.

5. Scroll down the page to answer all 10 questions.

6. Next use the right pointing ARROW symbol to go to the next page. There are 5 total pages. **Note:** You don't need to fill in every question. If some don't apply, leave them blank. If you don't want to fill them all in, Teddy will still function properly. However, the more questions you answer, the more Teddy can talk about. It's up to you.

7. When you're finished entering in your Child's information, press the Left facing ARROW symbol to return to the main screen.

\* These screens may be different from the actual app.

Go to [www.myfriendteddy.com/instructions](http://www.myfriendteddy.com/instructions)

## Troubleshooting

Problem	Possible Cause	Recommendation
No beep sound is heard when Teddy is turned on.	a) Bluetooth® connectivity is not enabled on the smart device. b) Batteries need replacing.	a) Ensure Bluetooth® connectivity is turned on before switching on Teddy. b) Insert new batteries.
My smart device can't find Teddy when its Bluetooth® connectivity is turned on.	a) The smart device is too far away from Teddy. b) Interference from appliances such as microwaves & Wifi routers.	a) Move the device closer to Teddy and retry making the connection. b) Move the smart device and Teddy away from other appliances and retry.
My smart device can't pair with Teddy when its Bluetooth® connectivity is turned on.	a) Teddy's batteries are running low. b) Attempting to pair multiple Teddy to the same device. c) Teddy is paired with another device	a) Replace batteries. b) Switch off the other Teddy and retry. c) Switch off the other device(s) and retry.
When Teddy is paired with a smart phone, the phone rings and can be heard on Teddy.	Teddy will act as a Bluetooth® speaker when paired with a smart device.	Activate the phones "DO NOT DISTURB" feature during play with Teddy.
When Teddy is paired with a smart device, sounds from other apps can be heard.	Teddy will act as a Bluetooth® speaker when paired with a smart device.	Close or hibernate other apps on the smart device during play with Teddy.
Teddy does not hear me.	a) You did not speak loudly enough. b) Too much background noise. c) Something is blocking the microphone in Teddy's mouth. d) You're too far away from Teddy.	a) Speak slowly and clearly. b) Take Teddy to a quieter place. c) Move closer and retry.

## For best performance make sure to:

- Turn off other active apps in your smart device.
- Play with the bear in a quiet environment. Noises will affect his ability to hear correctly.
- Be about 12 inches (30 cm) away from the front of the bear and facing directly toward it.
- If the bear doesn't hear you, speak louder or more slowly or move closer and try again.
- Update your iOS and Android™ OS to the latest version.

Go to [www.myfriendteddy.com/instructions](http://www.myfriendteddy.com/instructions)

Find the video of your language there and play it. You'll see step-by-step on how to get the bear set up, get it's Bluetooth® connectivity running, and interact with it.

For further questions, please refer to the 'support' section on our website  
[www.myfriendteddy.com/support](http://www.myfriendteddy.com/support)



Manufactured by Genesis Industries LTD., China  
Putou Industrial Area, Huzhou Town, Boleo, Huizhou, China.  
All Rights Reserved.  
Patent Pending  
MADE IN CHINA

The Bluetooth® word mark and logos are registered trademarks owned by Bluetooth SIG, Inc. and any use of such marks by Genesis™ is under license. Other trademarks and trade names are those of their respective owners.

Apple and the Apple logo are trademarks of Apple Inc., registered in the U.S. and other countries. App Store is a service mark of Apple Inc.

Android and Google Play are trademarks of Google Inc.

System requirement:  
Android 4.0.3 or above iOS 7.1\* or above  
\* Min. iOS version may increase from time to time. Please check [www.myfriendteddy.com/support](http://www.myfriendteddy.com/support) for latest update.

PLEASE RETAIN THIS INFORMATION FOR FUTURE REFERENCE. SCREEN DISPLAY MAY VARY FROM DIFFERENT DEVICES.

This device complies with Part 15 of the FCC Rules. Operation is subject to the following two conditions:

- (1) this device may not cause harmful interference, and
- (2) this device must accept any interference received, including interference that may cause undesired operation.

Warning: Changes or modifications to this unit not expressly approved by the party responsible for compliance could void the user's authority to operate the equipment.  
NOTE: This equipment has been tested and found to comply with the limits for a Class B digital device, pursuant to Part 15 of the FCC Rules. These limits are designed to provide reasonable protection against harmful interference in a residential installation. This equipment generates, uses and can radiate radio frequency energy and, if not installed and used in accordance with the instructions, may cause harmful interference to radio communications.

However, there is no guarantee that interference will not occur in a particular installation. If this equipment does cause harmful interference to radio or television reception, which can be determined by turning the equipment off and on, the user is encouraged to try to correct the interference by one or more of the following measures:

- Reorient or relocate the receiving antenna.
- Increase the separation between the equipment and receiver.
- Connect the equipment into an outlet on a circuit different from that to which the receiver is connected.
- Consult the dealer or an experienced radio/TV technician for help.

Safety Precautions : Parental guidance is recommended.  
Not suitable for children under 24 months.  
Please remove all packaging material before giving to children.