

Base, Channel 1

hp

MKR 902.203 MHz

REF 117.0 dB $\mu$ V

AT 20 dB

98.33 dB $\mu$ V

PEAK

LOG

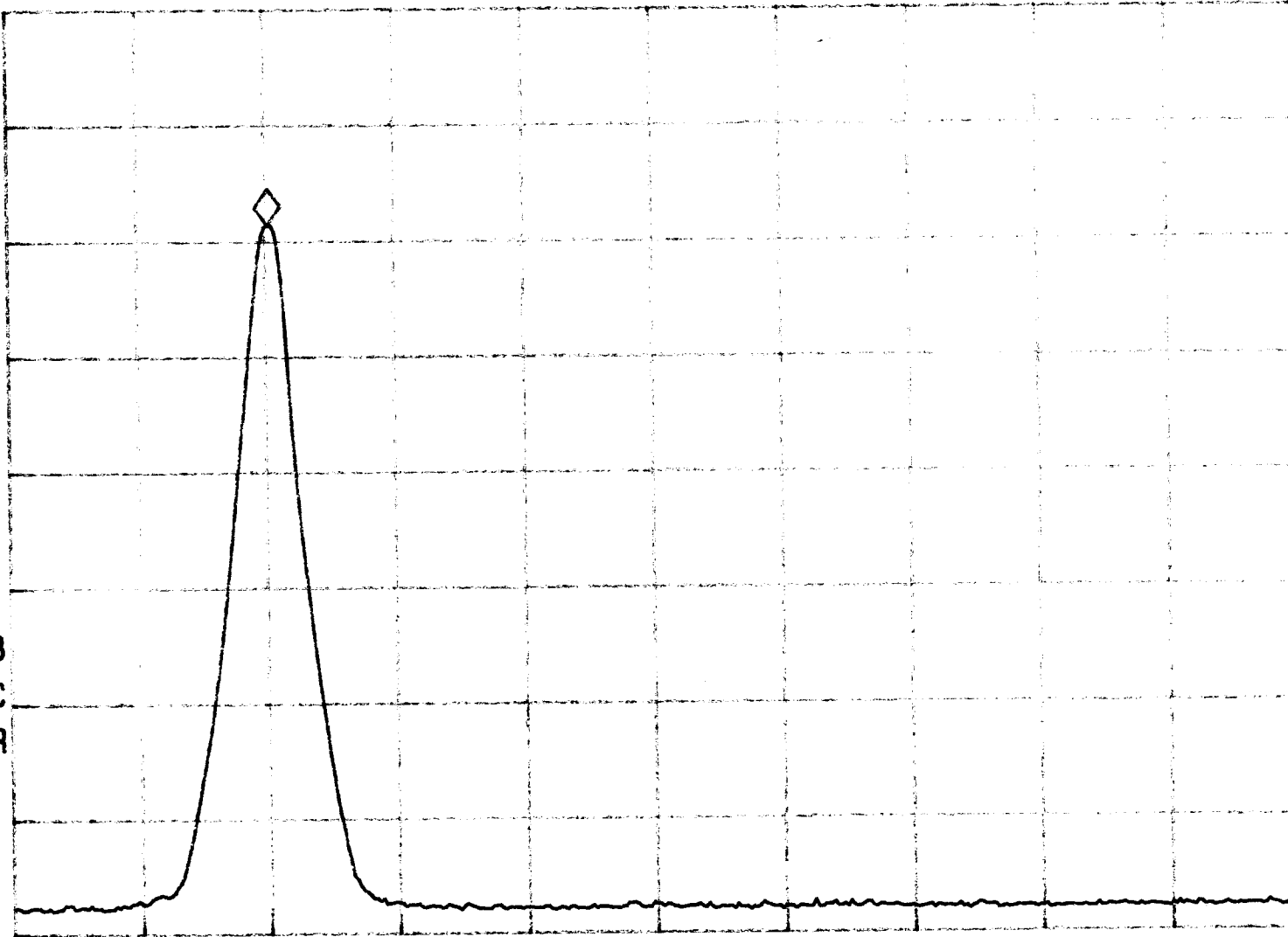
10

dB/

VA SB

SC FC

CORR



START 902.000 MHz

#RES BW 10 KHz

VBW 10 KHz

STOP 903.000 MHz

SWP 30.0 msec

Handset, Channel 40

hp

MKR 927.763 MHz

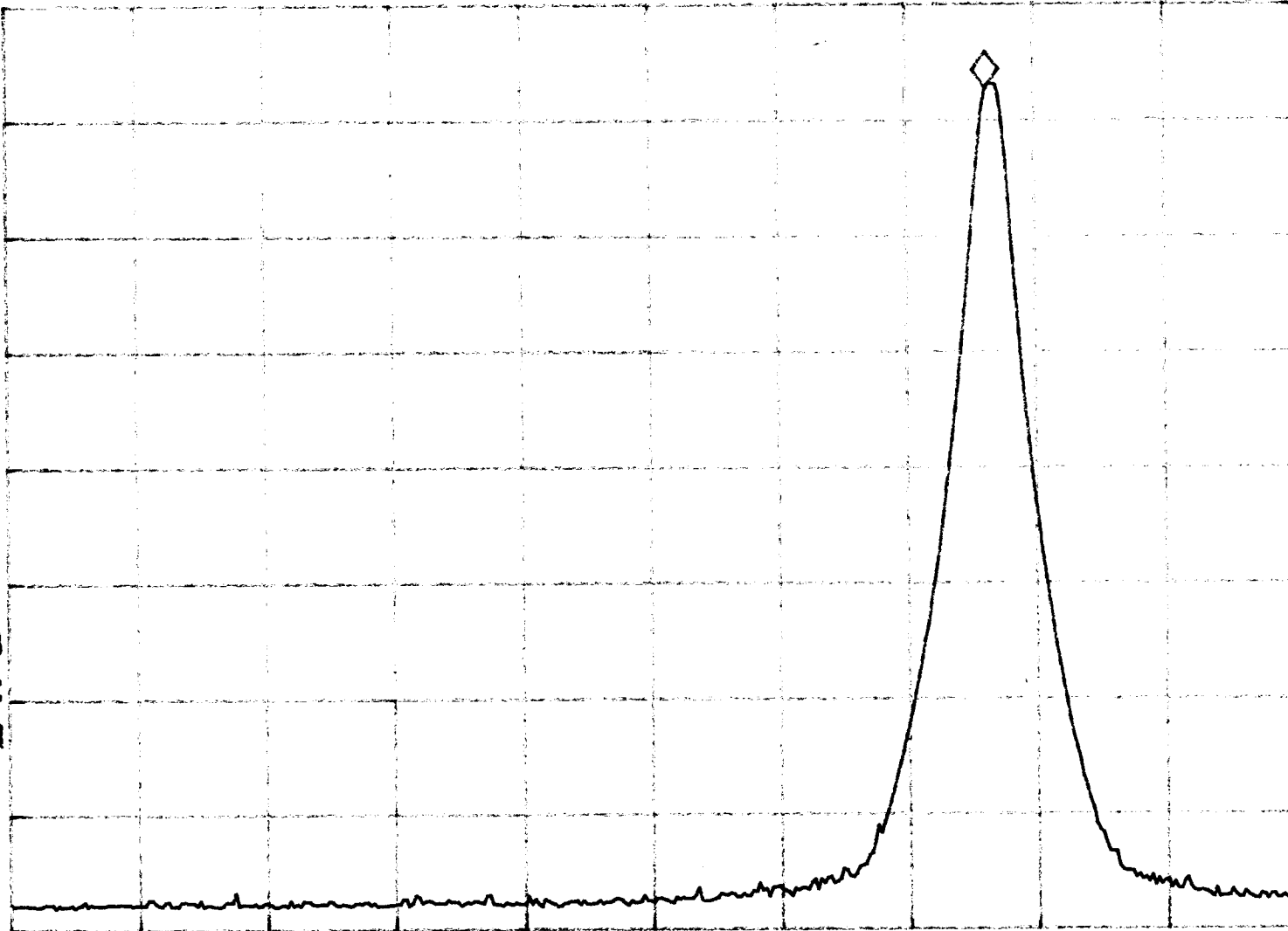
REF 117.0 dB $\mu$ V

AT 20 dB

109.72 dB $\mu$ V

PEAK  
LOG  
10  
dB/

VA SB  
SC FC  
CORR



START 927.000 MHz

#RES BW 10 KHz

STOP 928.000 MHz

VBW 10 KHz

SWP 30.0 msec