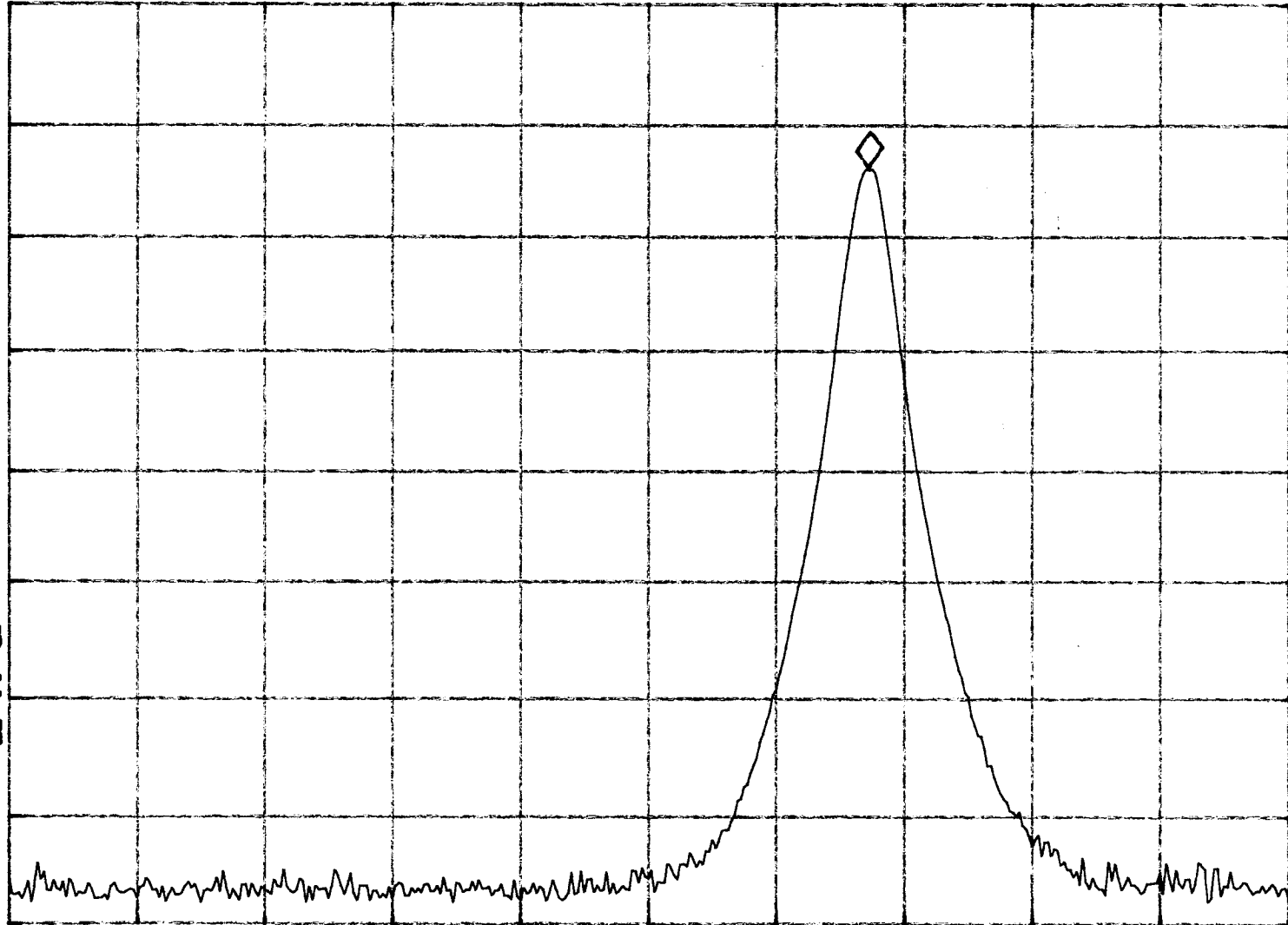


Handset (Channel 1)

tip
REF 117.0 dB μ V AT 20 dB MKR 906.035 MHz
103.23 dB μ V

PEAK
LOG
10
dB/

VA SB
SC FC
CORR



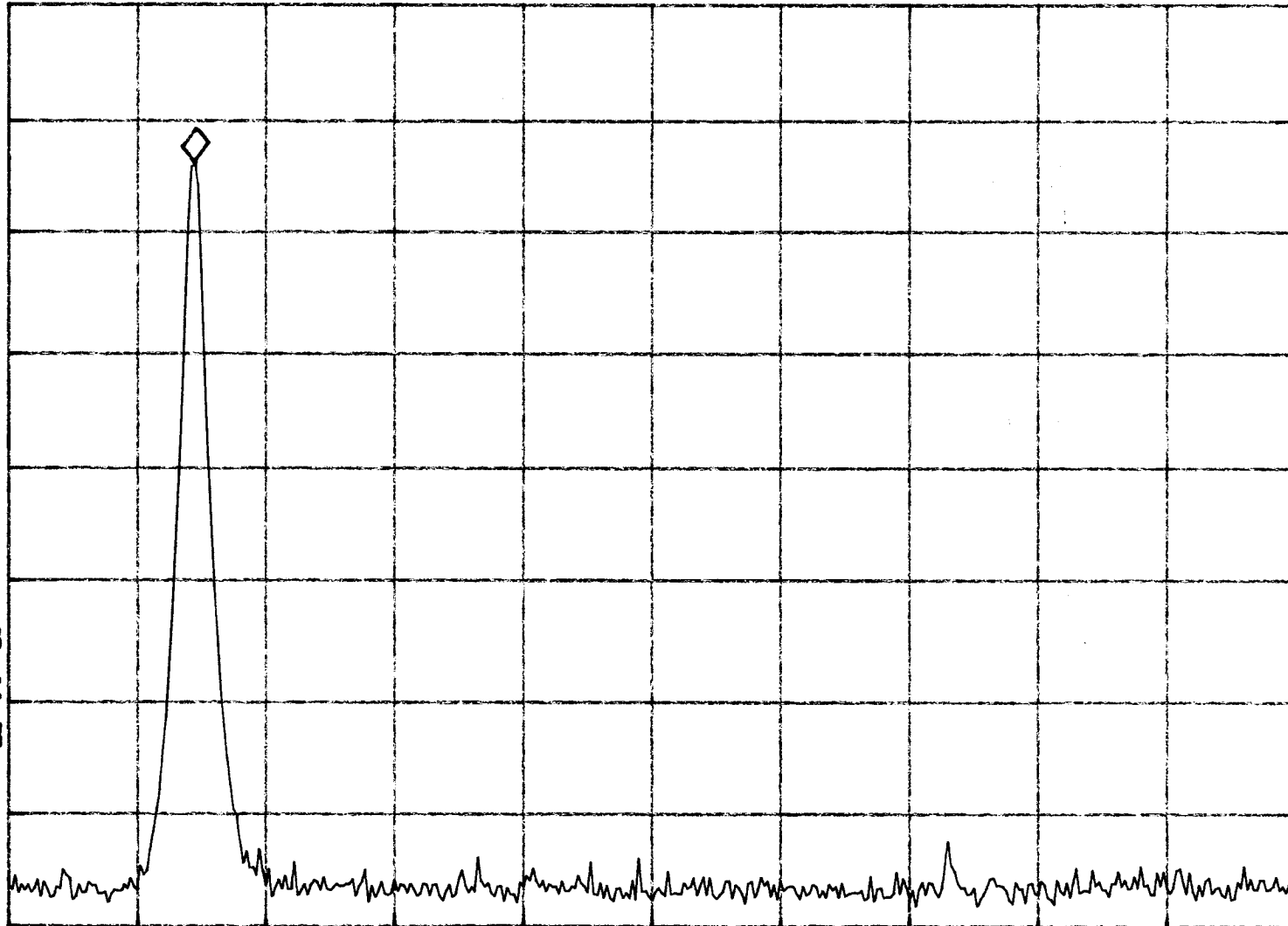
START 902.000 MHz STOP 908.000 MHz
#RES BW 100 kHz #VBW 3 MHz SWP 20.0 msec

Handset (Channel 50)

hp
REF 117.0 dB μ V AT 20 dB MKR 909.19 MHz
103.05 dB μ V

PEAK
LOG
10
dB/

VA SB
SC FC
CORR



START 906.00 MHz STOP 928.00 MHz
#RES BW 100 KHz #VBW 3 MHz SWP 20.0 msec

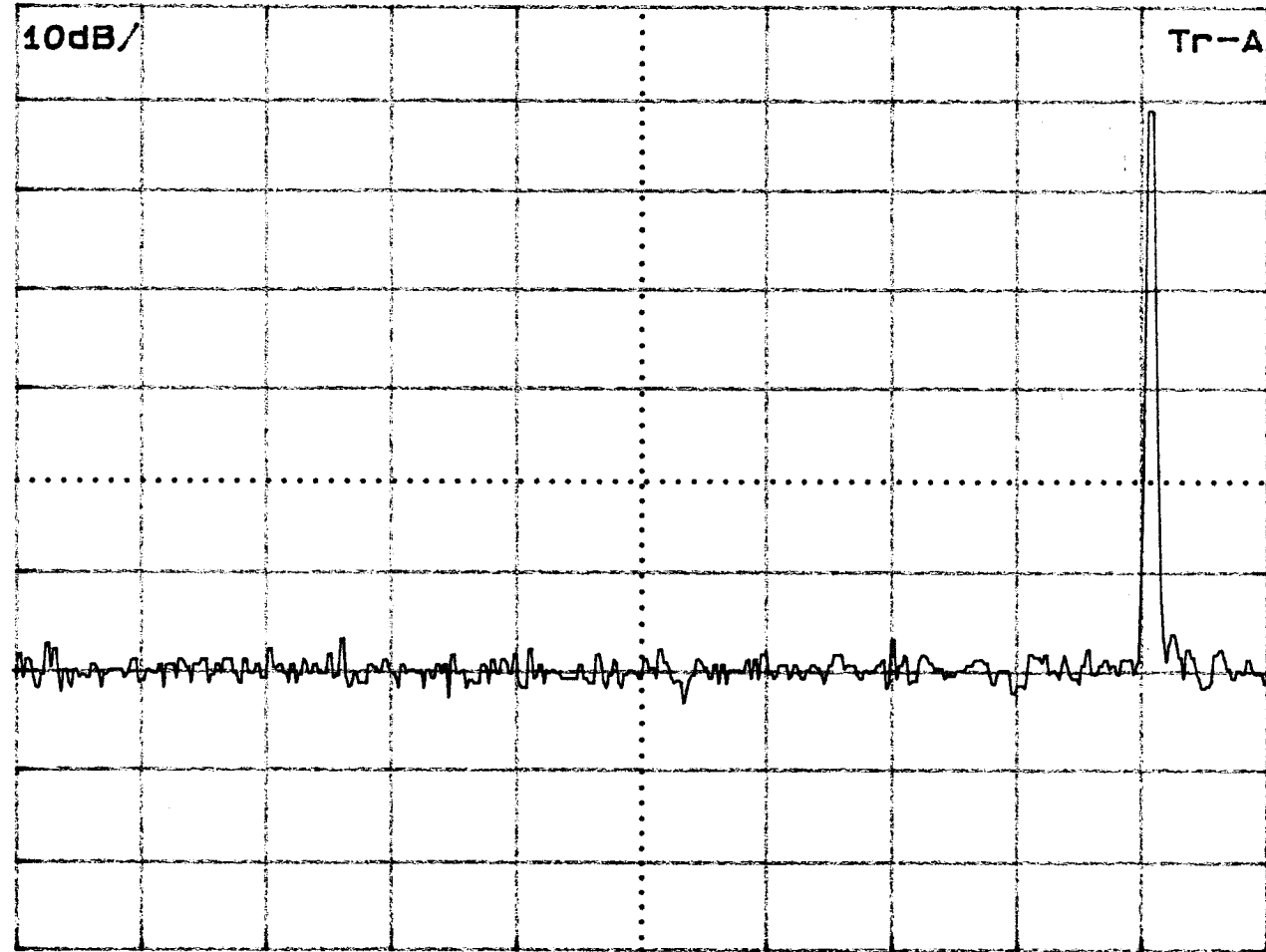
Base (Channel 1)

AT 10dB P

ST 100ms#

RLV: 84.30dBuV

RB 100kHz# VB 3MHz#



ST: 2.40000GHz

SP: 2.48000GHz

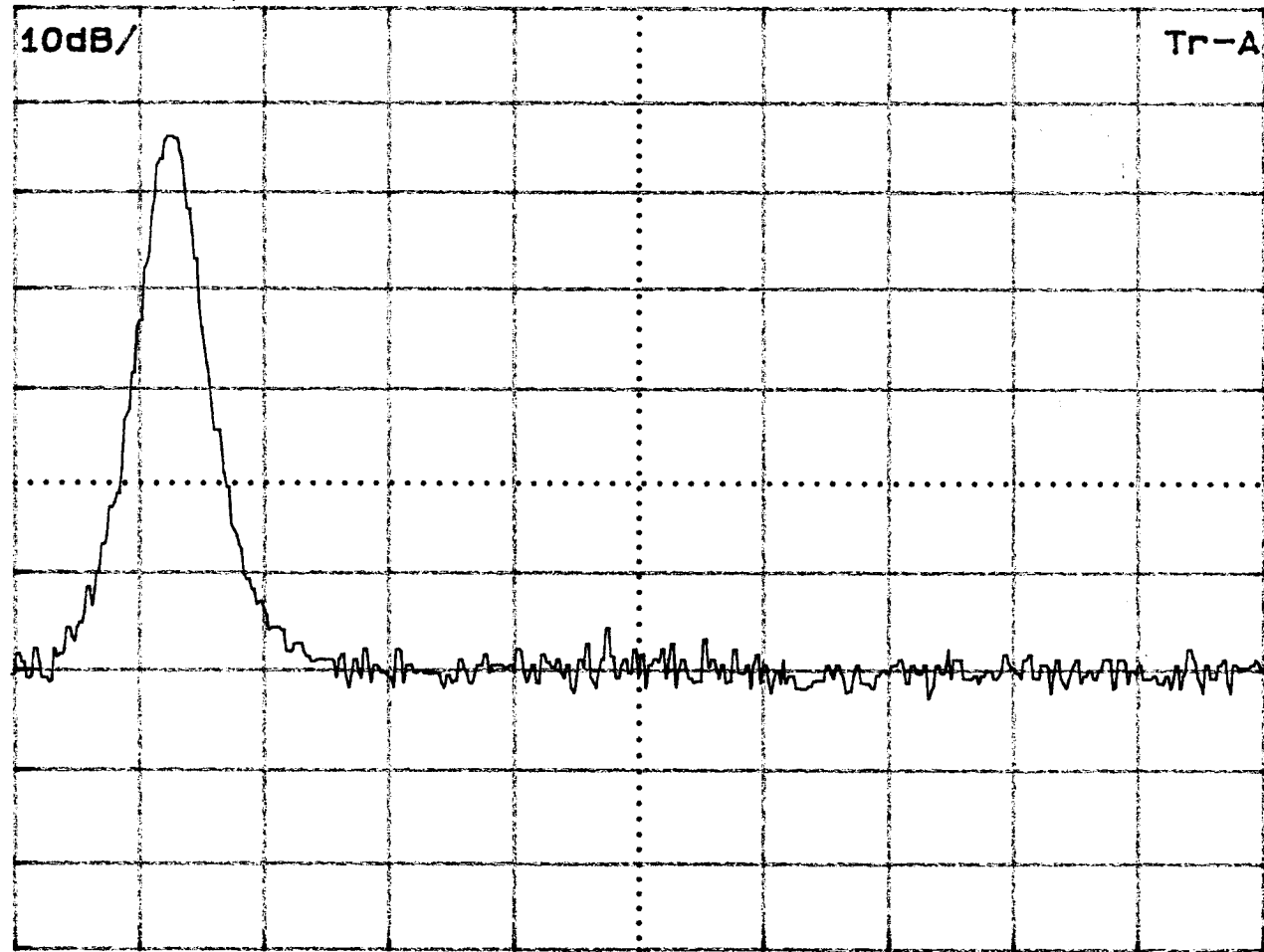
Base (Channel 50)

AT 10dB P

ST 100ms#

RLV: 84.30dBuV

RB 100kHz# VB 3MHz#



ST: 2.476000GHz

SP: 2.483500GHz