

**HBL Receiver with Label
Rear view
Photograph No.2**



N O G A N E G E V I N N O V A T I O N L I D .

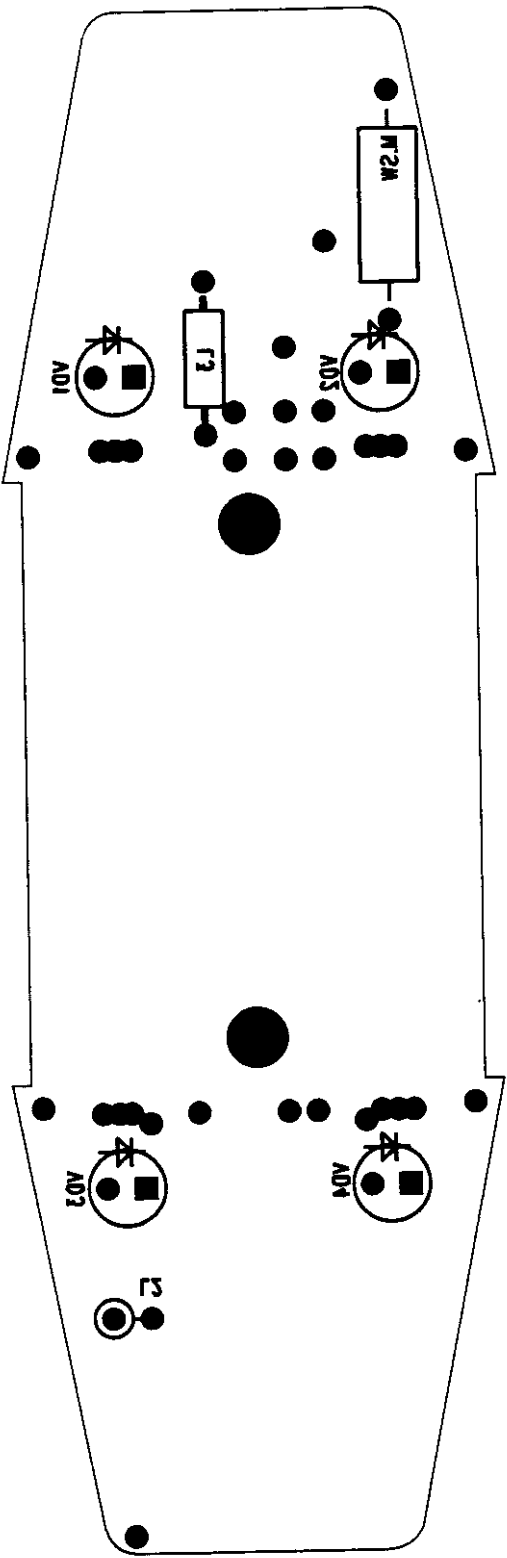
Noga-Negev Innovations

Helmet brake light system

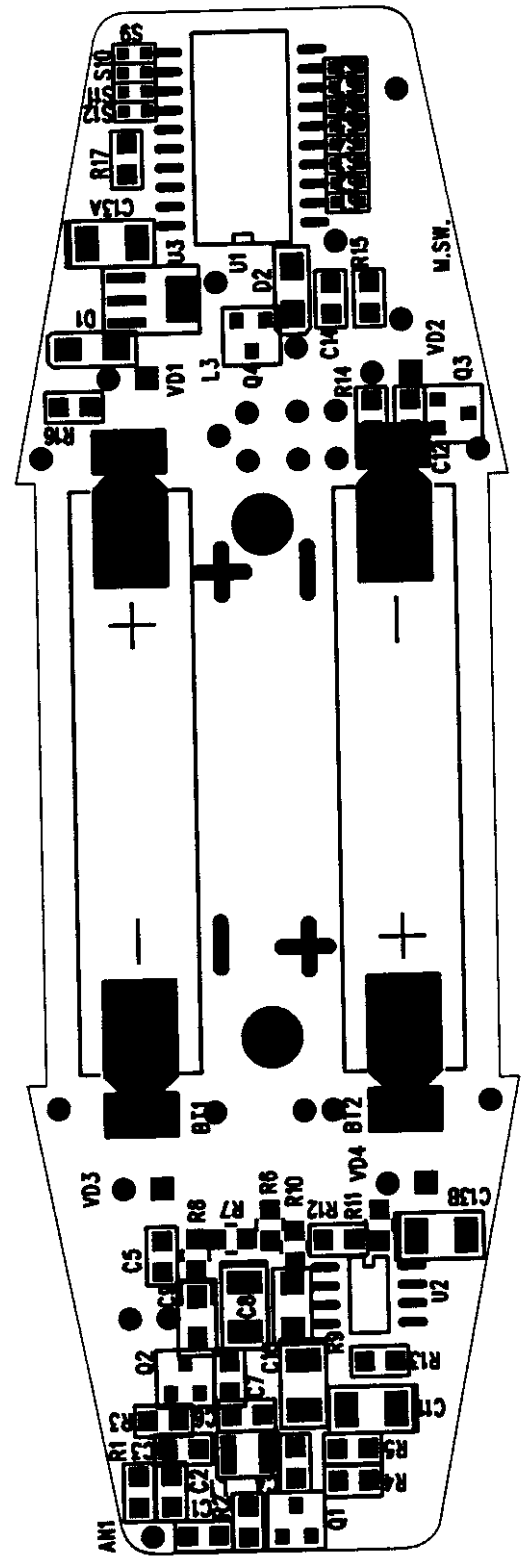
The helmet brake light system is a new add-on product for two-wheel vehicles. It is an extra red rear brake light, mounted on the rider's helmet. It is connected, via a wireless control, to the original rear brake light mounted on the vehicle. When the rider presses the vehicle's brake pedal, both brake lights operate simultaneously. The helmet brake light is located higher than the vehicle's regular brake light, and will immediately attract the attention of other drivers. The helmet brake light system can be easily attached to the back of any helmet or put on the baggage compartment of a motorcycle.

Field tests shows that existing motorcycle brake lights do not give other drivers sufficient warning about a cyclist's intentions. Recognizing this fact, an additional car braking light has become a compulsory standard in the US, Europe and Israel.

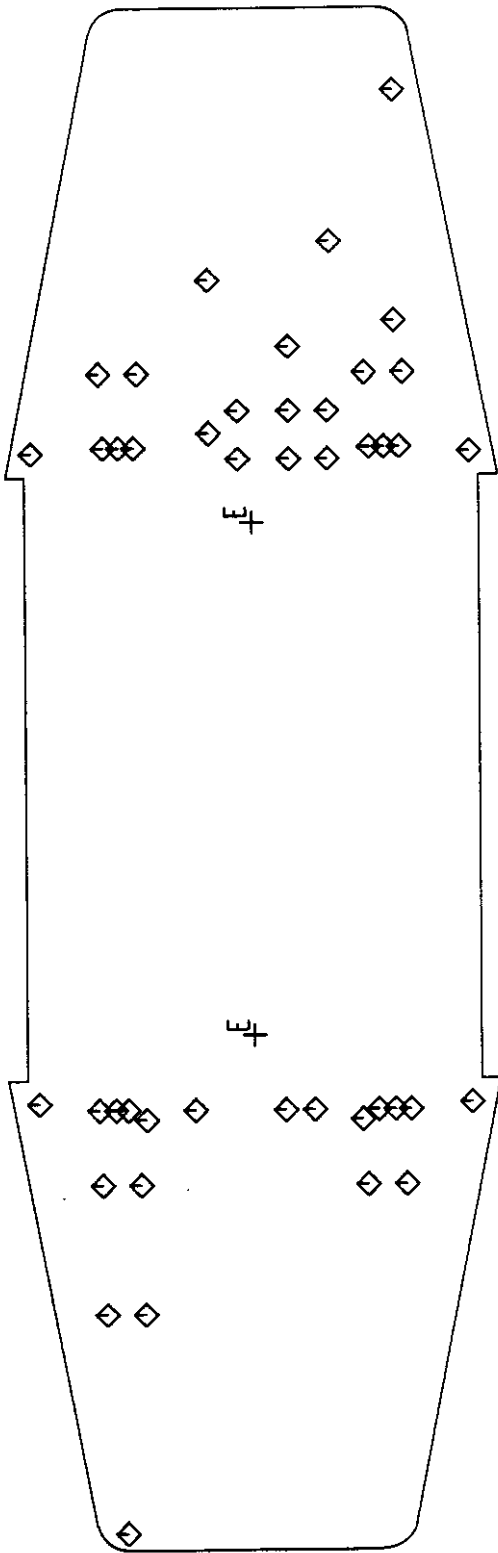
AD2263T1 NOV 1997



AD2263T1 NOV 1997

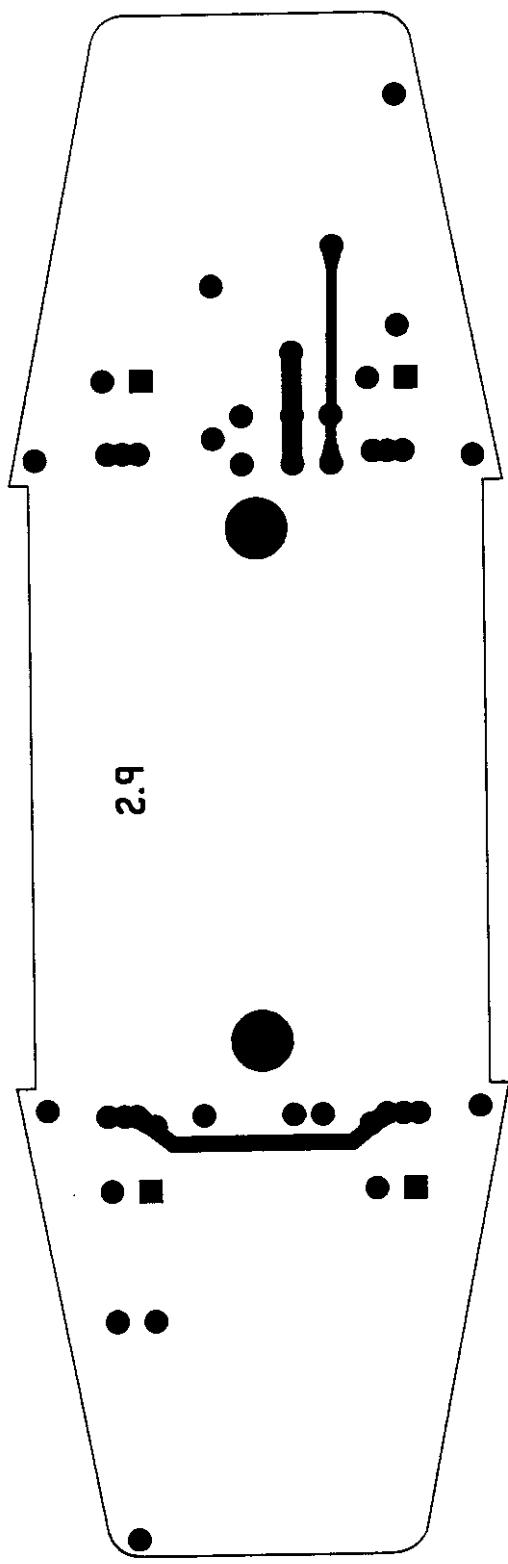


AD2263T1 NOV 1997

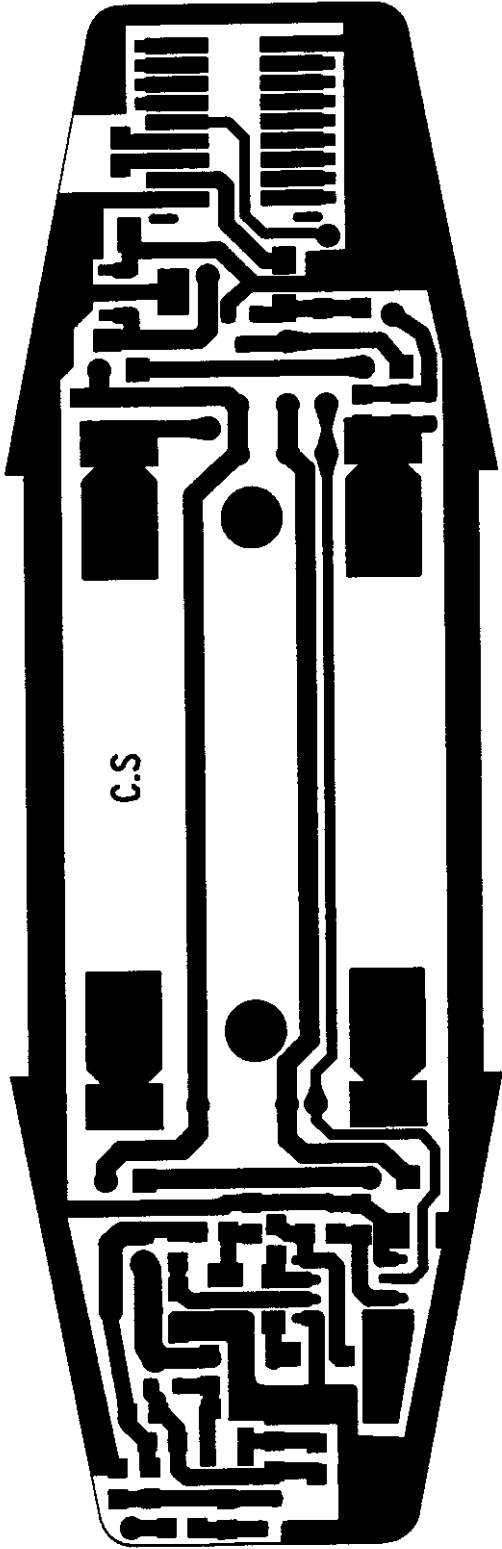


SIZE	QTY	SYM
37	44	◇
96	2	⊕

AD2263T1 NOV 1997



AD2263T1 NOV 1997



FCC requirements § 2.1033 (b)(4), (5)

**CIRCUIT DESCRIPTION.
BLOCK DIAGRAM.
SCHEMATIC DIAGRAM WITH PART-LIST.
PCB DRAWINGS.**

This page is followed by the HBL receiver description, block diagram, schematic diagram with part list and PCB drawings on 10 pages.