

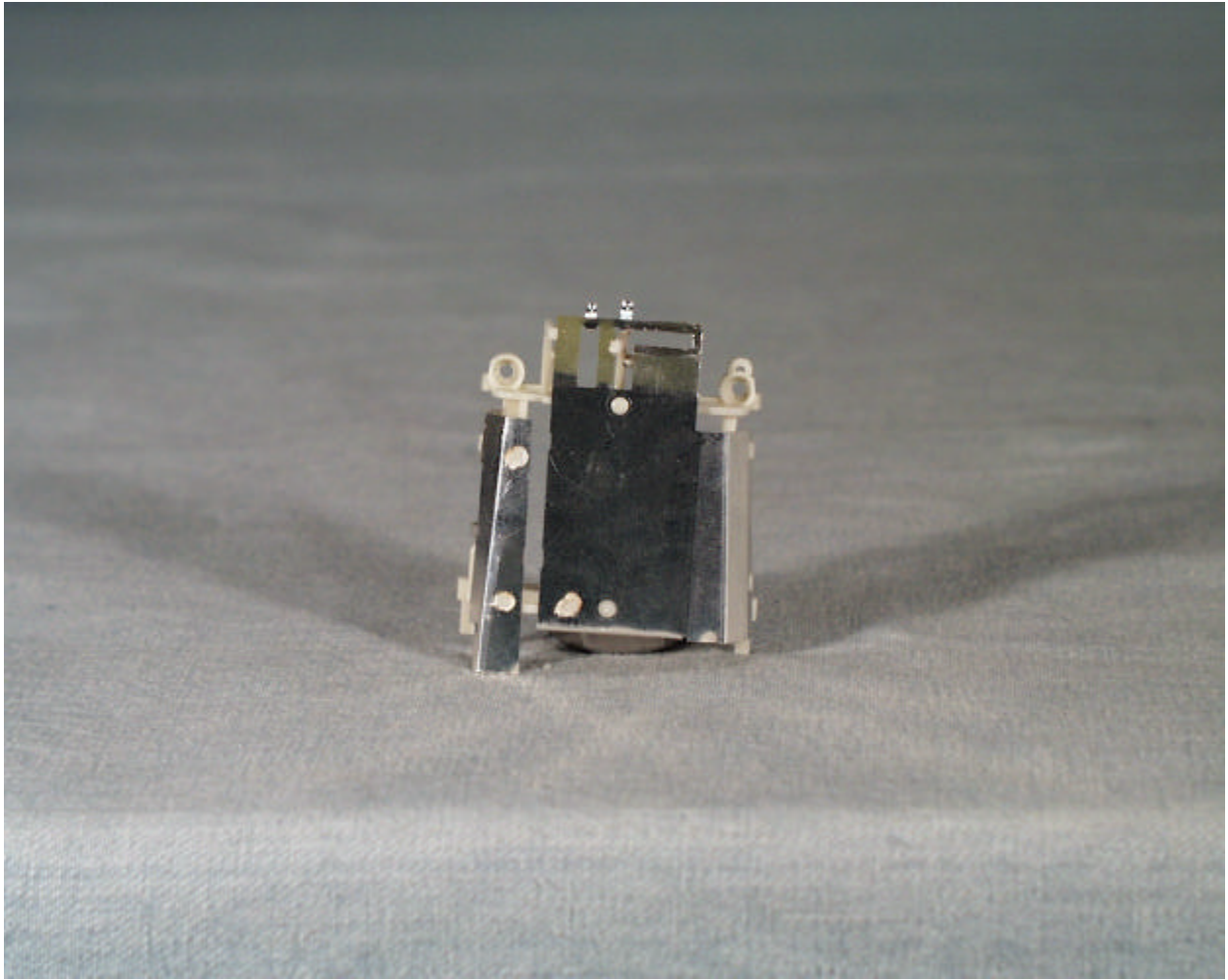
Exhibit 9: Internal Photographs



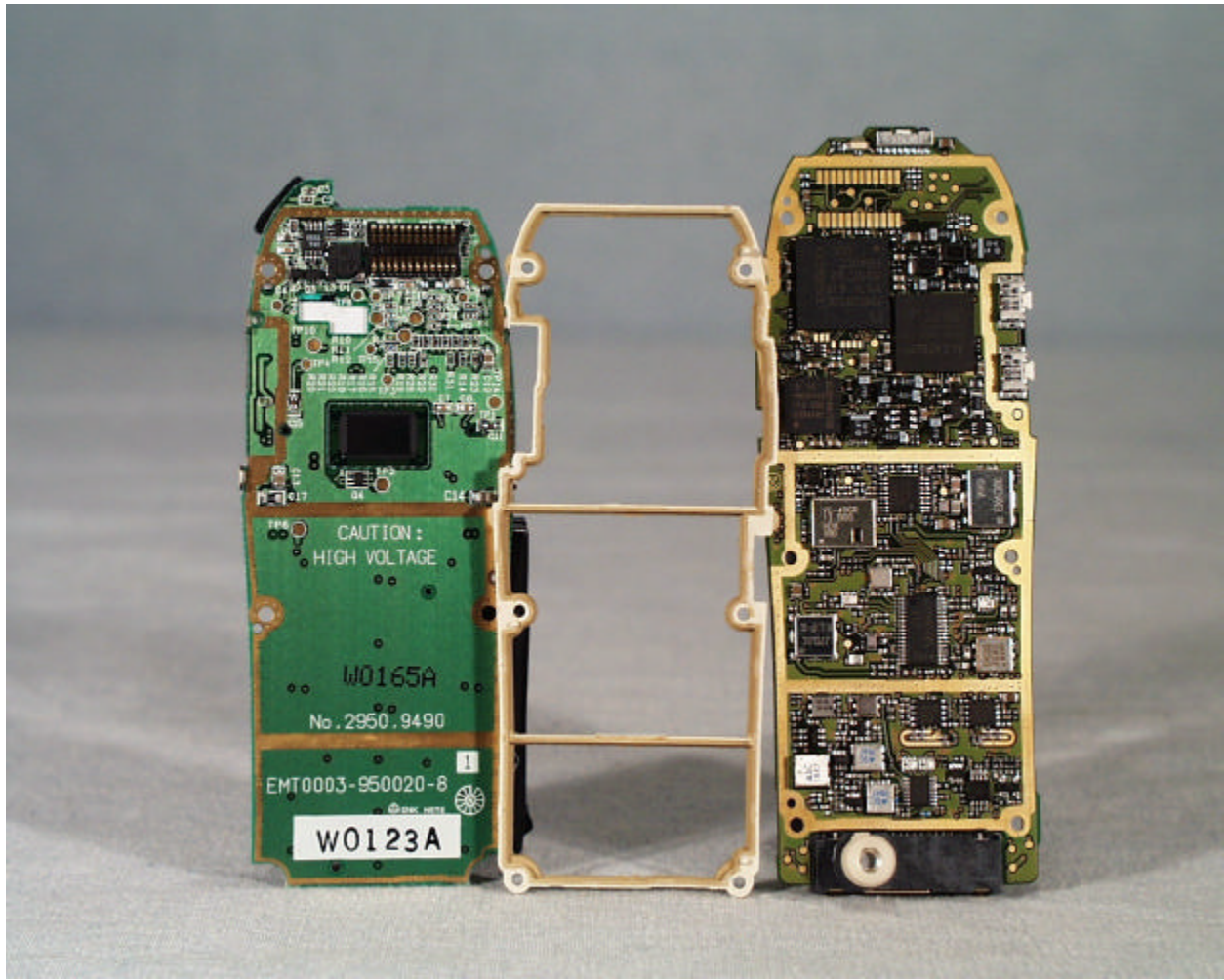
Inside view of the S42



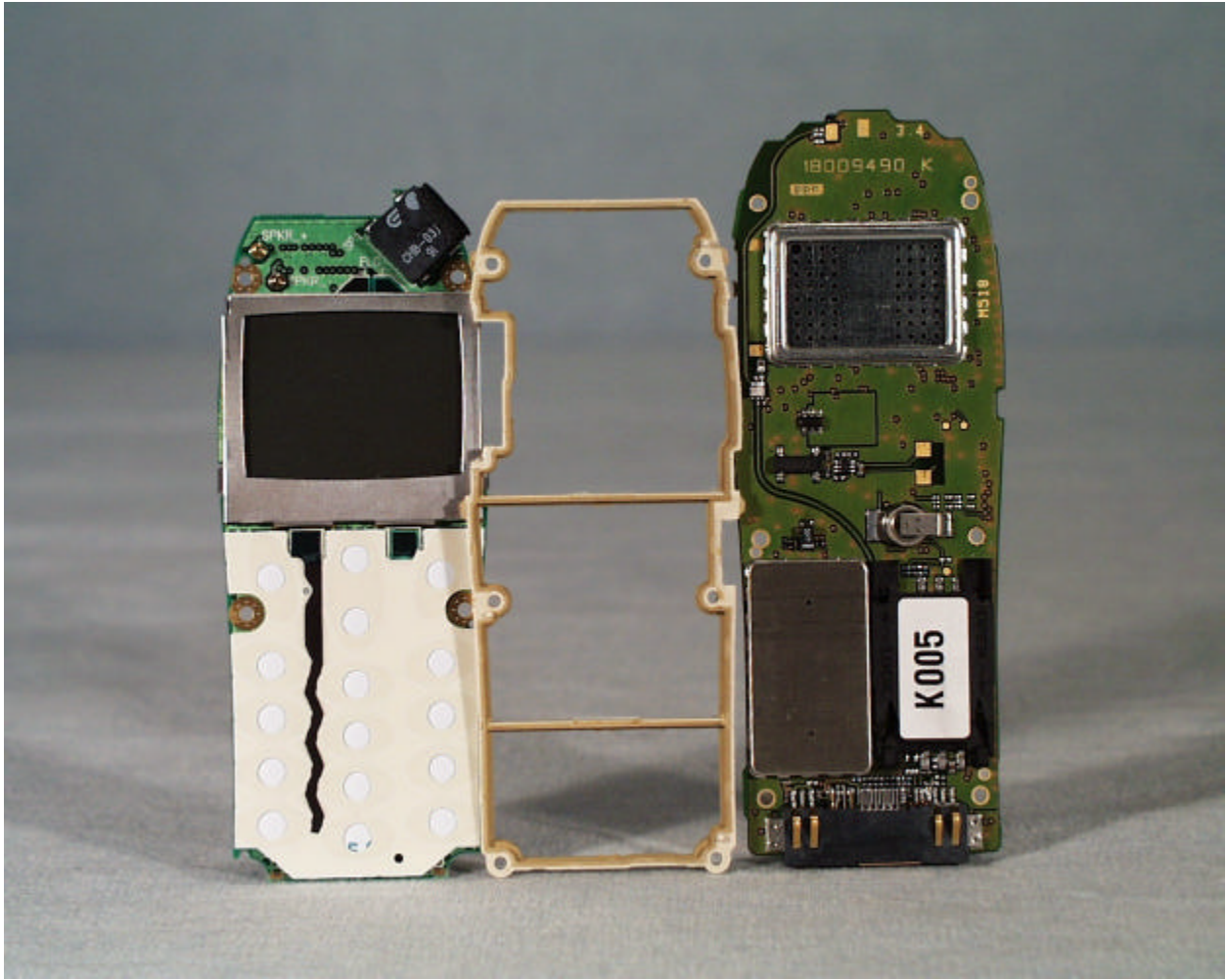
Battery



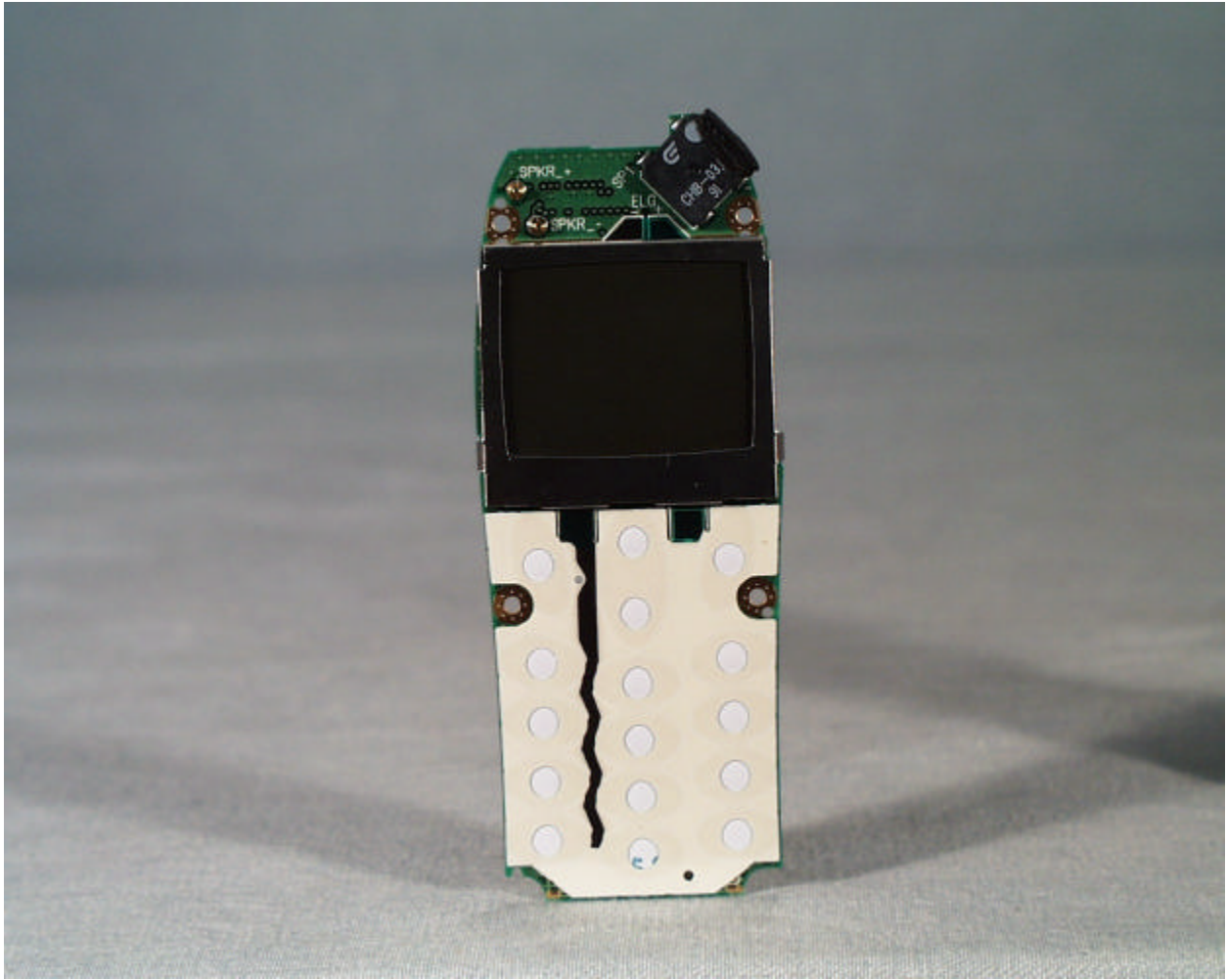
Antenna



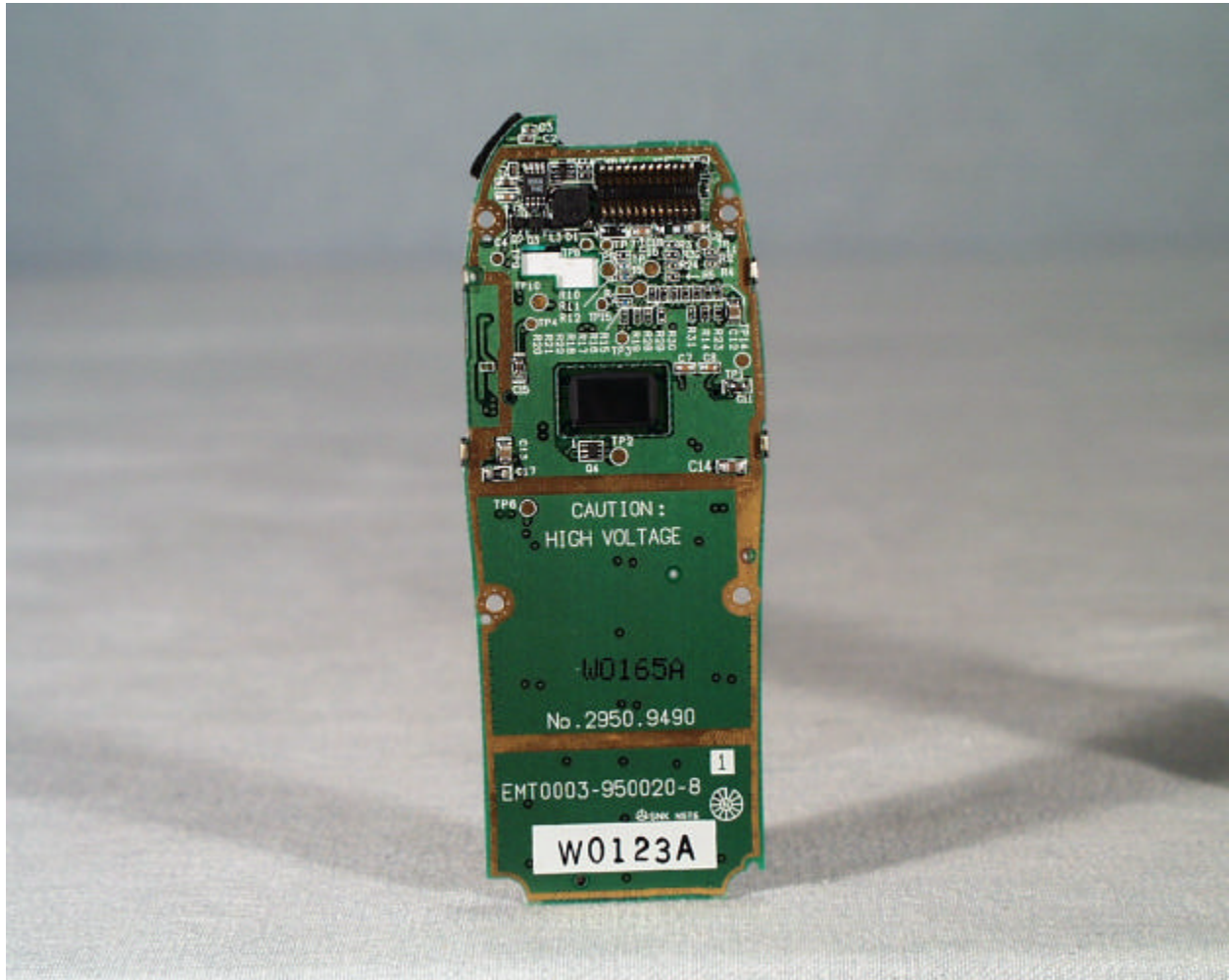
Front view of the MMI module, main PCB and RF gasket that is placed between the two boards



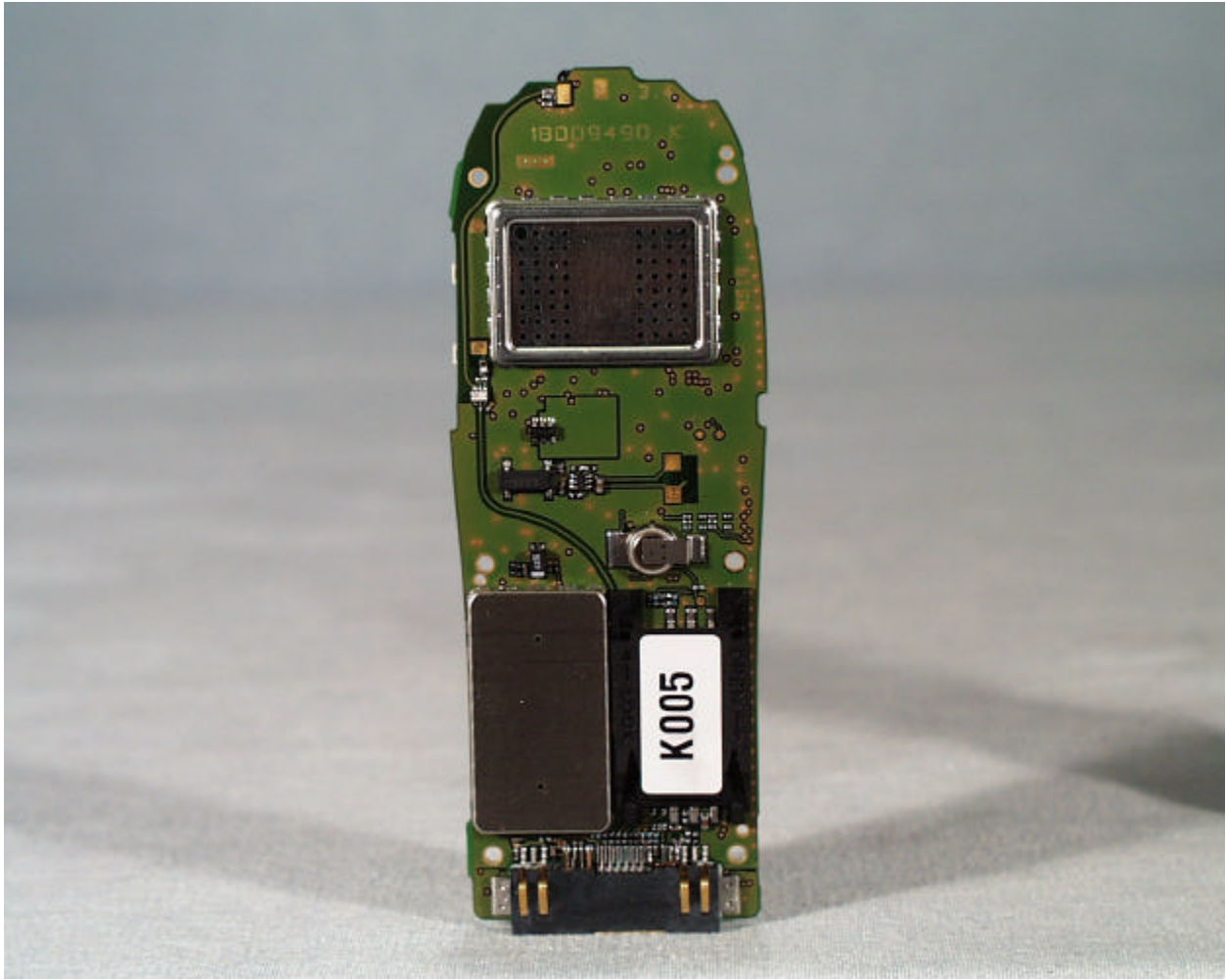
Back view of the MMI module, main PCB and RF gasket that is placed between the two boards



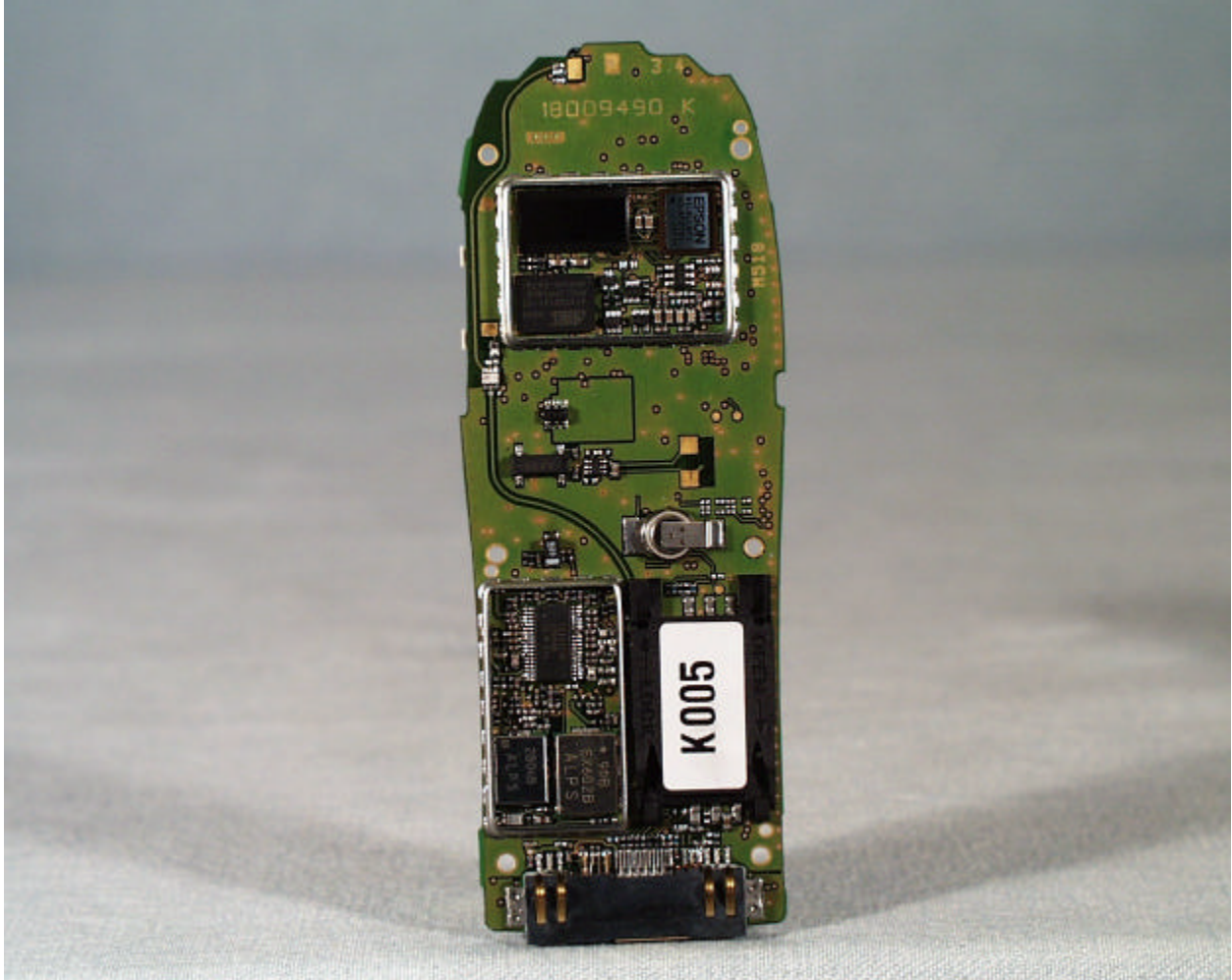
Front view of the MMI module



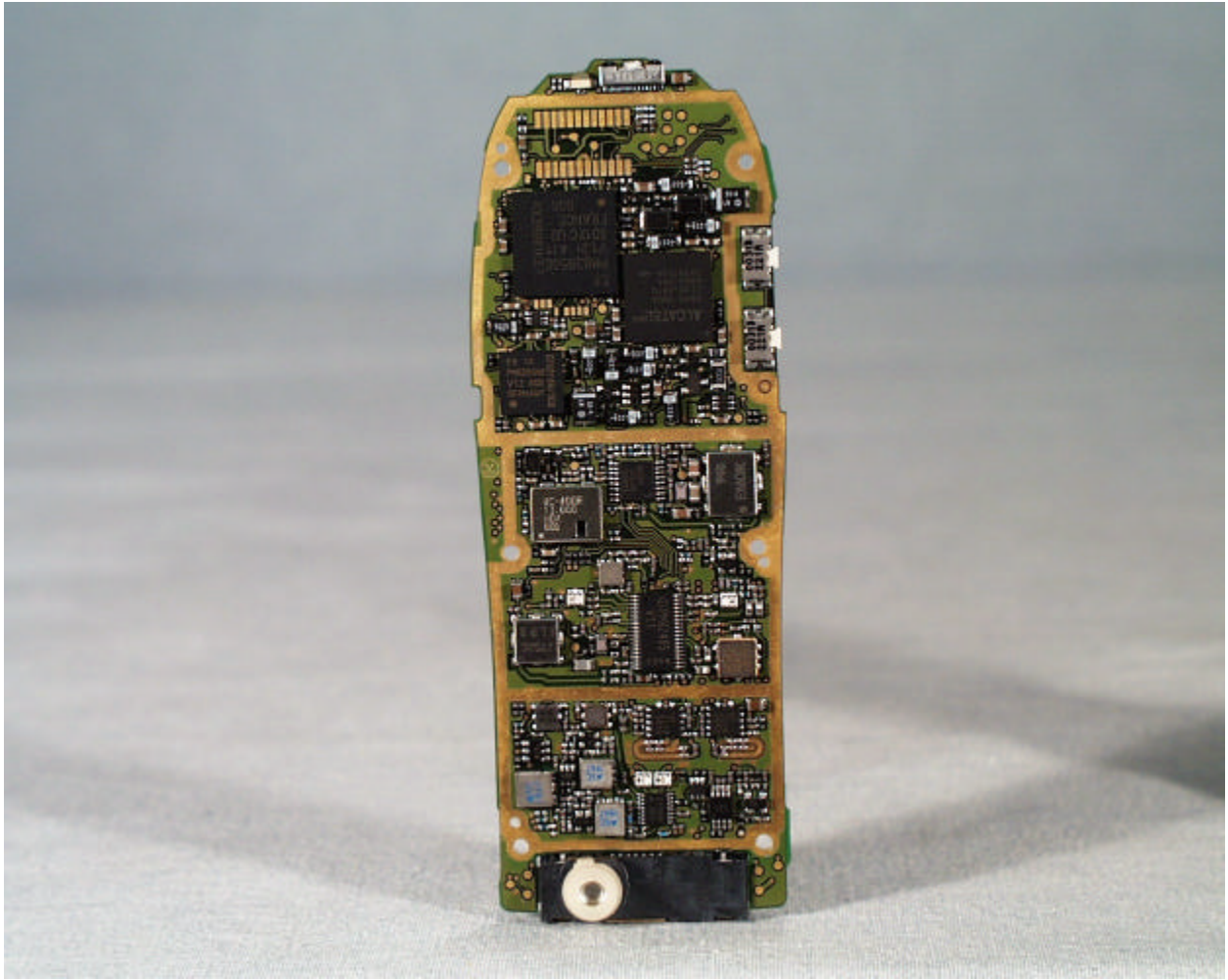
Back view of the MMI module



Front view of the main PC board (with RF can)



Front view of the main PC board (without RF can)



Back view of the main PC board