



PC USB Tablet

User' s Guide

AIPTEK

FCC Statement

This equipment generates and uses radio frequency energy and if not installed and used in accordance with the manufacturer's instructions, it may cause interference to radio and television reception. This equipment has been tested and certified to comply with the limits for a Class B computing device, pursuant to sub-part J of part 15 of FCC Regulation, which are designed to provide reasonable protection against such interference in a residential installation. However, there is no guarantee that interference will not occur in a particular installation. If this equipment does cause interference to radio or television reception, which can be determined by turning the equipment off and on, the user is encouraged to try to correct the interference by more of the following measures:

- Reorient the receiving antenna
- Relocate the computer with respect to receiver
- Plug the computer into a different power outlet so that the computer and receiver are on different branch circuits.

If necessary, the user should consult with the dealer or an experienced radio/television technician for additional suggestions. The user may find the following booklet helpful which prepared by the Federal Communication Commission:

“How to Identify and Resolve Radio-TV Interference Problems.”

This booklet is available from the US Government Printing Office
Washington DC, 20402, Stock Number 004-000-00345-4.

Introduction

Thank you for purchasing HyperPen, the most natural text and graphics input device for your desktop or notebook PC. We are confident that you will benefit from its advanced features and that it will make your computing more productive and fun.

Traditionally, computer graphics tablets have been regarded as professional devices used in specialized fields such as CAD/CAM and graphic arts. Their potential in everyday computing has not, until recently, been fully realized. With the introduction of its HyperPen series of affordable, user-friendly graphics and text tablets, Aiptek brings the power of such intuitive input devices to a much wider audience of computer users, proving that they can be successfully used for much more than CAD/CAM and painting.

The benefits of using HyperPen are many. A cordless pen design gives you increased freedom of movement and flexibility, something you will really notice whether you are retouching a photo, drawing and writing freehand, or simply dragging and dropping objects on your desktop. Our unique pressure sensitive pen gives a natural and realistic feel to every written or drawn stroke, making full artistic expression possible on the desktop computer. Press hard and you get a thick stroke, press lightly and you get a lighter stroke. It's that simple! And this is not only of benefit to computer artists--the ability to define and differentiate multiple levels of pressure is also important to pattern and text recognition. Imagine being able to use your digital pen and tablet to sign your name on your PC, to confirm a transaction over the internet for example, and the

computer being able to confirm authenticity of the signature in real time.

It's all possible with HyperPen!

Use of graphics tablets as the input device of choice is increasing as the mainstream computing world realizes their huge potential. For example, Microsoft Windows 98 will feature a whiteboard utility to allow direct sketching and writing via tablet and pen. HyperPen also makes communication over the internet a much more fluid and interactive experience, allowing you to convey messages and ideas as fast as you can write and draw!

System Requirements

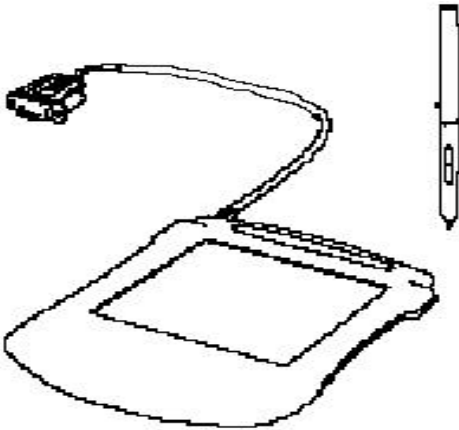
- 586 PC or faster with an available serial port
- Windows 3.1, Windows 95 or Windows NT 3.5 or later
- 8MB RAM for Windows 95
- 12MB RAM for Windows NT
- 3.5" floppy drive
- CD-ROM drive
- Color monitor

Minimum 4MB hard disk space for HyperPen Manager software installation (actual hard disk space required for additional software installation varies greatly, depending on programs installed).

Hardware Installation

Before connecting the tablet to your computer, please take a few moments to familiarize yourself with the contents of your HyperPen package. The various components are shown below:

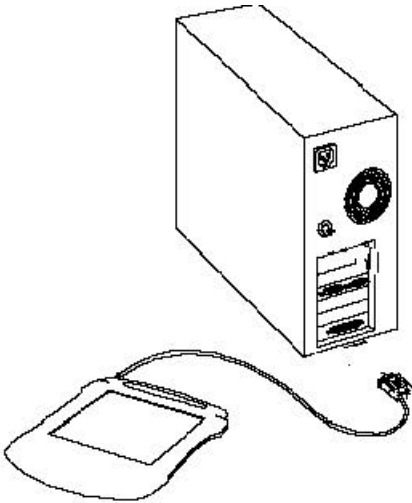
- HyperPen stylus
- HyperPen pad
- USB data/power connector



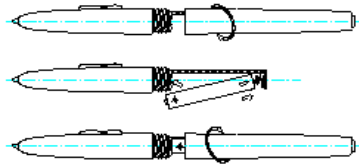
-

Please carefully read the following instructions to install HyperPen on your computer.

1. Make sure your computer and all peripherals are turned off.
2. Remove the keyboard cable from the back of your computer.
3. Attach the connector of the USB adaptor cable and then plug the male connector of the USB adaptor into usb socket of your computer.
4. Plug the power jack of the USB adaptor cable into the power socket of the USB connector.
5. Connect the USB data/power connector to the port of your computer.



6. Open the HyperPen stylus with a gentle twisting motion and insert the included AAAA-type battery.



7. Power up your computer and prepare to install software drivers for your HyperPen tablet.
8. If HyperMouse option was included with your HyperPen package, you may now insert the AAA-type battery by opening the panel on the bottom of the mouse. Please note that HyperMouse can only be used with your HyperPen tablet to function.

Software Installation

BACKUP

Before starting the software installation procedure, please make a backup copy of the original diskette and use this copy to install, storing the original in a safe place..

Driver Installation

1. HyperPen is fully Plug-n-Play compliant and should therefore be detected by Windows 95 as “New Hardware Found” when you start up your machine. If for any reason it is not, please go to the Windows *Control Panel* and double-click on the “Add New Hardware” icon. When Windows asks if it should auto-detect new hardware, select “No” and proceed to the next screen. Then choose “Tablet” or “Other Devices” from the list of installable devices and click on the “Next” button.
2. Select “Have Disk” and, after inserting the HyperPen driver diskette into the selected drive bay, click “Next.”
3. Select the model name in the “Select Device” dialog box, then press “Enter” on the keyboard to install drivers to your system.
4. Restart your computer to enable the new drivers.

HyperPen Manager installation

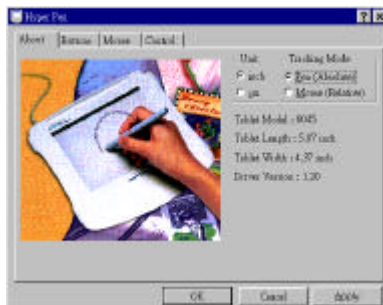
Every HyperPen tablet and stylus has been fine-tuned and pre-optimized at the factory prior to shipping. However, this utility allows you to make

adjustments to suit your particular writing or drawing style.

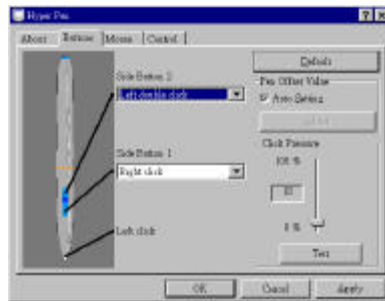
1. Back up a copy of your HyperPen Manager diskette and insert it into your floppy drive.
2. Select “Run” from the “Start” button and type A:\SETUP (or B:\SETUP). Press “Enter.”
3. Follow the on-screen instructions and make your desired modifications.
4. When the installation process is complete, a HyperPen Manager icon will appear in the Windows *Control Panel*. Double-clicking on this icon will launch the HyperPen Manager utility, where you can adjust tablet, pen and mouse settings to your preference.

HyperPen Manager configuration

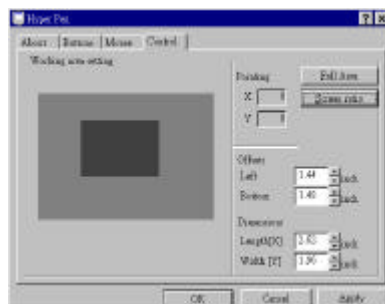
1. Double-click the HyperPen Manager icon in the Windows *Control Panel*.
2. Click on the “About” tab to see the product information of HyperPen, and also you may click to choose whether HyperPen is working under pen mode (absolute coordinate) or mouse mode (relative coordinate), when you choose mouse mode, the pen moves just like an ordinary mouse.



3. Click on the “Buttons” tab to configure pen button functions. You may also adjust pen pressure values (a higher value means higher pressure, and vice-versa). Press “Default” to return to preset values.



3. Click on the “Mouse” button if you are using HyperMouse to set up mouse button functions. Click the “Combo” box to choose which function you want to map to the mouse thumb button. The default setting is for document scrolling but you can use this button to simulate double-clicking if you wish.
4. Click on the “Control” tab to configure your HyperPen tablet’s working area settings. With your pen, click on a dot in the dark gray area in this dialog box. When a cross symbol appears, click another dot to bring up a black rectangle within the gray area. This black rectangle represents the working area of the tablet in relation to the full screen area. This is useful for people who want to customize the



working area of the tablet to utilize a relatively smaller area of the screen. To allocate a certain area of your screen to be used as the effective working area of your tablet, select “Screen Ratio.” To automatically match the full working area of your tablet to your full screen, select “Full Area.”

Software Package Installation

This package includes a variety of software applications that take advantage of the unique capabilities of HyperPen. To install these applications, please refer to the following specific software installation instructions.

Cadix ScreenSaver:



How to install:

1. Insert application CD into CD-ROM drive.
2. Choose Cadix button if AutoRun function is enabled, or choose Cadix folder inside application CD, and then execute the INSTALL program.
3. Follow dialog to complete installation.

How to set:

1. Go to “Control Panel” and double click on “Display”.
2. Go to “Screen Saver” and choose “Cadix Signature Screen Saver”.

3. Click on “Settings”.
4. You can register 2 signatures if required. Click on “Registration No. 1” to register your signature. You are required to sign 3 times for registration.
5. During registration, if you are prompted “Unstable signature”, click on “Del” to delete your signature and repeat step (4).
6. Click on “Registration No. 2”, if you want to register another signature e.g. your secretary’s. Repeat as in (4).
7. You can replace the default picture (Cadix logo) by keying in the full path name of the new picture (BMP format) in the blank space provided. Click “View” to display the picture chosen.
8. Input your password to be used as an alternative to turn off screen saver.
9. *Please note that if no password is keyed in, the screen saver can be turned off by just pressing “/” key.*

How to use:

1. When the screen saver is activated, you will be prompted to sign when any key is pressed. Sign your signature used during registration. If verified, screen saver will be turned off.
2. If no signature is signed, the “sign” window will disappear after time-out.
3. *When required, you can press “/” key to activate the password alternative. Key in your password to turn off the screen.*
4. To change your signature, just repeat the registration process.
5. To activate the screen saver instantly, just click on the screen saver

icon in the status bar on the right bottom of screen.

How to uninstall:

1. Go to “ Control Panel” and double click on “Add/Remove Programs”.
2. Choose “Cadix Signature Screen Saver” and click on “Add/Remove”.
3. Program is removed.

Operation Environment

The digitizer should operate within the following environment:

- 41 to 104 degrees Fahrenheit or 5 to 40 degrees Celsius
- 20 to 85 % relative humidity, non-condensing

NOTE :

Condition higher or lower the range stated above may result in non-operation.

CAUTION !

- Never immerse any part in any fluid/liquid.
- Disconnect the digitizer from its power source before cleaning.
- Remove dust or stains with soft cloth dampened with water or neutral detergent.

- Don't use volatile/chemical liquids such as thinner or benzine to clean the tablet.
- Don't store or operate the tablet in extremely hot or cold environment or where the humidity is beyond the specified range.

Don't place hot items on the surface of tablet.

Trouble Shooting

Tablet LED light is not ON

- Make sure the power jack of the Keyboard/Power adaptor is plugged into the power socket of the USB Data/Power connector.
- Make sure the male connector of the Keyboard/Power adaptor is plugged into the keyboard connector.

The screen cursor doesn't respond to the input from the tablet.

- Check USB cables are connected properly to your system.
- Check your tablet LED does light on.
- Make sure driver and application software are installed correctly.

Make sure the tablet driver is loaded successfully.

Specifications (4000 Series)

Active area (W x D)	4.0 x 3.5 in (101.6 x 76.2 mm)
Physical size (W x D x H)	188 x 200 x 6.9 mm
Power consumption	0.35 watts
Power supply	Keyboard power (DC 5 +/- 5% V regulated)
Weight	400 g (0.88 lb)
Resolution	max. 3048 lpi / 120 lpmm
Accuracy (overall with pen)	0.42 mm,
Maximum Pressure levels	512 levels
Maximum reading height	10 mm (0.4 in)
Communication interface	USB
Connector	USB
Certification	FCC class B, VCCI class 2,CE (EMC)

Specifications (5000 Series)

Active area (W x D)	5.0 x 4.0 in (127 x 102 mm)
Physical size (W x D x H)	195 x 220 x 7.6 mm
Power consumption	0.3 watts
Power supply	Keyboard power (DC 5 +/- 5% V regulated)
Weight	332 g (0.73 lb)
Resolution	max. 3048 lpi / 120 lpmm
Accuracy (overall with pen)	0.42 mm,
Maximum Pressure levels	512 levels
Maximum reading height	10 mm (0.4 in)
Communication interface	USB
Connector	USB
Certification	FCC class B, VCCI class 2,CE (EMC)

Specifications (6000 Series)

Active area (W x D)	60 x 4.5 in (154 x 114.7 mm)
Physical size (W x D x H)	234 x 247.5x 7.6 mm
Power consumption	0.3 watts
Power supply	Keyboard power (DC 5 +/- 5% V regulated)
Weight	375 g (0.82 lb)
Resolution	max. 3048 lpi / 120 lpm
Accuracy (overall with pen)	0.42 mm,
Maximum Pressure levels	512 levels
Maximum reading height	10 mm (0.4 in)
Communication interface	USB
Connector	USB
Certification	FCC class B, VCCI class 2,CE (EMC)