

User's Manual

AIPTEK

Start Writer



Manual for the Start Writer PC tablet

T

WARNING

Note: This equipment has been tested and found to comply with the limits for a Class B digital device, pursuant to Part 15 of FCC Rules. These limits are designed to provide reasonable protection against harmful interference in a residential installation. This equipment generates, uses and can radiate radio frequency energy and, if not installed and used in accordance with the instruction, may cause harmful interference to radio communications. However, there is no guarantee that interference will not occur in a particular installation. If this equipment does cause harmful interference to radio or television reception, which can be determined by turning the equipment off and on, the user is encouraged to try to correct the interference by one or more of the following measures:

- Reorient or relocate the receiving antenna.
- Increase the separation between the equipment and receiver.
- Connect the equipment into an outlet on a circuit different from that to which the receiver is connected.
- Consult the dealer or an experienced radio/TV technician for help.

Notice:

- (1) Use only shielded cables to connect I/O devices to this equipment.*
- (2) Changes or modifications not expressly approved by the party responsible for compliance could void the user's authority to operate the equipment.*

TABLE OF CONTENTS

I. INTRODUCTION.....	Page 2
II. GENERAL INFORMATION.....	Page 5
System Requirements -.....	Page 5
Operating Environment -.....	Page 5
Tablet Size Specifications -.....	Page 6
END USER LICENSE AGREEMENT -.....	Page 7
III. PREINSTALLATION CONFIGURATION.....	Page 10
Driver conflicts-.....	Page 10
Serial port settings -.....	Page 10
IV. TABLET INSTALLATION.....	Page 11
Hardware Installation -.....	Page 11
Driver Installation-.....	Page 13
Windows 98 -.....	Page 13
Autodetection -.....	Page 13
No Autodetection -.....	Page 15
Windows 95 -.....	Page 16
Autodetection -.....	Page 16
No Autodetection -.....	Page 17
Windows NT -	Page 18
V. ADDITIONAL SOFTWARE INSTALLATION.....	Page 19
Art Dabbler -.....	Page 19
Star Writer --.....	Page 21
VI. HOW TO USE.....	Page 22
Tablet manipulation -.....	Page 22
How to use Star Writer -.....	Page 27
VII. TROUBLESHOOTING.....	Page 35
Windows 98/95 -.....	Page 35
Windows NT -	Page 36
Hardware problems -.....	Page 37
STATEMENT OF LIMITED WARRANTY -.....	Page 38
End-User License Agreement	Page 40

I. STARTWRITER INTRODUCTION

Thank you for purchasing the Start Writer PC tablet! We hope you enjoy using your tablet, and thank you for your business.

Learning to write is one of the most basic & necessary tasks that any child will learn in school. They are necessary for anyone who desires to succeed in this world. Writing skills are the foundation for both future education and future success in today's society. Often, children look at it as a boring, time-consuming task, which they don't want to do. Having to pull out a book and copy the lessons onto a paper is not very much fun to anyone at all. If only there were a way to make this learning task easier, more fun, and more convenient, kids might want to learn to write more. Well, the StartWriter PC tablet was designed to do just that!

The Start Writer PC tablet is a Pen & Tablet system designed to make learning how to write more fun and convenient! It comes with the Star Writer* writing program, a fundamental program that tutors children on reading & writing. No longer do you need to pull out a textbook! Simply start up StarWriter, and it will show you how to write letters, numbers, and words. No need to grab a pencil & paper and copy from a book; just follow the simple directions in StarWriter! It comes with an easy-to-use child-friendly interface, so you will not need to read a big manual to use StarWriter. Follow the simple, easy-to-read instructions in this booklet, and your child will be on their way to using the StarWriter in just a few short minutes!

With the StartWriter PC tablet, learning to write has brought to the most convenient place possible – the computer! The StartWriter PC tablet makes it easy to learn to write. Whether your child is just beginning to learn to write their letters and number, or if they need to just improve their handwriting penmanship, the StartWriter PC tablet is the best choice for them. Your child will be able to learn to write on their own in an easy & fun way! The StartWriter PC tablet is the best way to learn to write today!

SYSTEM REQUIREMENTS

- Windows* 98, Windows 95, Windows NT Workstation 4.0 with Service Pack 3, or Windows NT Server 4.0 with Service Pack 3
- Pentium 233 MHz (or equivalent processor) for Windows 98 and Windows NT Server; Pentium 133 MHz (or equivalent processor) for Windows 95 and Windows NT Workstation
- 32 MB of RAM for Windows 98 and Windows NT Workstation; 16 MB of RAM for Windows 95; 64 MB of RAM for Windows NT Server
- Available 9-pin serial port
- Minimum 4x speed CD-ROM drive
- SVGA color monitor with 0.28 dot mm pitch
- 4 MB of hard disk space for the Start Writer PC tablet driver software; 15 MB of hard disk space for Star Writer program; 15 MB of hard disk space for Art Dabbler program
- 2D/3D card with 1 MB of VRAM for minimum 16 bit High Color display and 1028 x 764 display
- Minimum Sound Blaster 16 sound card or compatible

OPERATING ENVIRONMENT

The tablet should be operated only within the following environmental conditions:

- 41-104° Fahrenheit; 5-40° Celsius
- 20%-85% relative humidity, non-condensing

Caution!

- Never immerse any part of the tablet or its components into any fluid or liquid.
- Disconnect the tablet from your computer before cleaning it.
- Remove dust or stains with a soft cloth dampened with water or neutral detergent.
- Don't use any volatile chemicals or liquids such as thinner or benzine to clean the tablet.
- Don't store or operate the tablet in extremely hot or cold environments or where the humidity is beyond the specified range.
- Don't place hot items on the surface of the tablet.
- Do not attempt to disassemble the tablet.

*Windows is a trademark of the Microsoft Corporation. Copyright 1986-1999. Here and throughout

TABLET SIZE

Active area (Width and Length)	6.0" x 4.5"; 15.24 x 11.43 cm
Physical Size (Width, Length and Depth)	9 1/8" x 9 1/16" x 1/4"; 23.18 x 23.02 x 0.64 cm
Cable Length	6 ft.; 1.83 m
Power Consumption	0.2 watts
Power Supply	Keyboard Power (DC 5 ± 5% V regulated)
Weight	14.81 oz.; 420 g
Input Current	40 mA
Maximum Resolution	3048 lpi; 120 lpmm
Overall Accuracy with Pen	0.0168 in.; .043 cm
Pressure Level Range	1-512
Maximum Pen Operating Height	0.4 in.; 1.02 cm
Connector	9-pin D-sub, female serial connecto
Operating Temperature	41°-104° Fahrenheit; 5°- 40° Celsius
Storage Temperature	14°-104° Fahrenheit; -10°- 60° Celsius
Operating Humidity	20%-80% non-condensing
Storage Humidity	20%-90% non-condensing
Certification	FCC class B, VCCI class 2, CD (EMC)

End-User License Agreement for the Aiptek Start Writer PC tablet

Important - Read Carefully!

This Aiptek End-User License Agreement ("EULA") is a legal agreement between you (either an individual or a single entity) and Aiptek, Inc. for the Aiptek hardware product identified above. This includes the computer hardware, software, associated media, printed materials, and "online" or electronic documentation ("HARDWARE PRODUCT"). **By attempting to install, successfully installing, copying, or otherwise using this HARDWARE PRODUCT, you agree to be bound by the terms of this EULA.** If you do not agree to the terms of this EULA, do not attempt to install or use the HARDWARE PRODUCT, and we recommend that you return it to the place where you purchased it from.

HARDWARE PRODUCT LICENSE

The HARDWARE PRODUCT is protected by copyright laws and international copyright treaties, as well as other intellectual property laws and treaties. The HARDWARE PRODUCT is licensed, not sold.

1. GRANT OF LICENSE. This EULA grants you the following rights:

- **Hardware** – You may install the HARDWARE PRODUCT on one single computer. If you have more than one computer that you would like to install the HARDWARE PRODUCT on, you may install the HARDWARE PRODUCT onto that other computer, provided that you are the only person that will use the HARDWARE PRODUCT on each computer system.
- **Software** – You may install the additional software included with this HARDWARE PRODUCT on one single computer, provided that you agree to the individual EULAs for each software program. If you have more than one computer that you would like to install the additional software that came with the HARDWARE PRODUCT on, you may install the additional software onto that other computer, provided that you are the only person that will use the additional software on each computer system.
- **Copies** – You may make one copy of each disk and CD included with the HARDWARE PRODUCT for backup purposes only, provided that you do not lease, lend, rent, or otherwise allow others to have possession of the copies.

2. OTHER RIGHTS AND LIMITATIONS

- **Single Entity User** – Only the person that the HARDWARE PRODUCT was purchased for may use the HARDWARE PRODUCT and its accompanying software.
- **Individual User** – Only you and those in your immediate household may use the HARDWARE PRODUCT and its accompanying software.
- **Product Transfer** – You may permanently transfer all of the HARDWARE PRODUCT under this EULA, provided you retain no copies of any of the software included in this HARDWARE PRODUCT. To do this, you must transfer all of the HARDWARE PRODUCT (including all component parts, the media and printed materials, any upgrades, this EULA, all software, and all disks), to the recipient. The recipient must also agree to the terms of this EULA. The Limited Warranty will also be null and void, and Aiptek shall then be released from honoring any and all parts of the Limited Warranty. If the intended recipient does not agree to the terms of the EULA, then the HARDWARE PRODUCT cannot be transferred. This product transfer will have occurred if the End-User purchases the HARDWARE PRODUCT from an unauthorized reseller.
- **Gifts** – If this HARDWARE PRODUCT was purchased for someone as a gift, the person purchasing the HARDWARE PRODUCT may give it to the intended recipient without voiding the Warranty, provided that the person purchasing the HARDWARE PRODUCT does not attempt to open the package, attempt to install the HARDWARE PRODUCT, or otherwise use the HARDWARE PRODUCT.
- **Decompilation, Disassembly, and Reverse Engineering** – You may not decompile, disassemble, or reverse engineer any and all parts of the HARDWARE PRODUCT, except

and only to the extent that such activity is expressly permitted by applicable law notwithstanding this limitation.

- Separation of Components – The HARDWARE PRODUCT is licensed as a single product. Its component parts and software may not be separated for use on more than one computer.
- Rental – You may not lease, lend, or rent any and all parts of the HARDWARE PRODUCT, including any and all backup copies made.
- Refunds – If for any reason you wish to return the HARDWARE PRODUCT, you can seek a refund from the place of purchase. If you cannot get a refund from the place of purchase, you may not seek a refund for the HARDWARE PRODUCT from Aiptek, and you agree to not attempt to seek a refund for the HARDWARE PRODUCT from Aiptek.
- Technical Support – Aiptek may provide you with Technical Support ("Tech Support") related to the HARDWARE PRODUCT. Use of Tech Support, which includes the Warranty Service, is governed by the Aiptek policies and programs described in the user manual, in "online" documentation, and/or in other Aiptek-provided materials, including this EULA. Any supplemental software code or pieces of hardware provided to you as part of Tech Support shall be considered part of the HARDWARE PRODUCT and subject to the terms and conditions of this EULA. With respect to information you provide to Aiptek as part of the Tech Support, Aiptek may use such information for its business purposes, including but not limited to product support and development. Aiptek will not utilize such information in a form that personally identifies you. Aiptek shall also not be responsible for any telephone charges that may occur in contacting Tech Support, and Aiptek shall not reimburse the End-User for any telephone charges that may occur while contacting Tech Support.
- Registration – You agree to register the HARDWARE PRODUCT with Aiptek within 60 days of purchase of the HARDWARE PRODUCT. As part of this agreement, you agree to provide Aiptek with all requested information. All information provided must be accurate and true.
- Termination – Without prejudice to any other rights, Aiptek may terminate this EULA if you fail to comply with the terms and conditions of this EULA. In such event, you must destroy all copies of the HARDWARE PRODUCT and all of its component parts.
- Changes to the EULA – Aiptek reserves the right to amend, change, and update this EULA at any time, and without notice. The user agrees to abide by such amendments, changes, and updates, should any be made.

3. COPYRIGHT – All title and copyrights in and to the HARDWARE PRODUCT (including but not limited to any images, photographs, animations, video, audio, music, text, and "applets" incorporated into the HARDWARE PRODUCT), the accompanying printed materials, all "online" documentation, any copies of the software included with the HARDWARE PRODUCT, all pieces of physical hardware, all media, and/or other Aiptek-provided materials, are owned by Aiptek or its suppliers. The HARDWARE PRODUCT is protected by copyright laws and international treaty provisions; Therefore, you must treat the HARDWARE PRODUCT like any other copyrighted material except that you may install the HARDWARE PRODUCT only as described in this EULA. You may not copy the printed materials accompanying the HARDWARE PRODUCT.

4. Other Mediums of Acquisition – You may receive the HARDWARE PRODUCT in more than one medium. Regardless of the type or size of medium you receive, you may use only one medium that is appropriate for your single computer. You may not use or install the other medium on another computer. You may not rent, lease, loan, or otherwise transfer the other medium to another user, except as part of the permanent transfer (as described in Section 2 of this EULA) of the HARDWARE PRODUCT.

5. Software Upgrades – Aiptek may occasionally provide upgrades to the driver program that makes the HARDWARE PRODUCT function. You are eligible to receive these upgrades provided that you register the HARDWARE PRODUCT with Aiptek. Rules for registering the HARDWARE PRODUCT with Aiptek are governed by the Aiptek policies and programs described in the user manual, in "online" documentation, and/or in other Aiptek-provided materials, including this EULA (see Section 2 of this EULA for more information).

6. U.S. GOVERNMENT RESTRICTED RIGHTS – The HARDWARE PRODUCT and documentation are provided with RESTRICTED RIGHTS. Use, duplication, or disclosure by the Government is subject to restrictions as set forth in subparagraph (c)(1)(ii) of the Rights in Technical Data and Computer Software clause at DFARS 252.227-7013 or subparagraphs (c)(1) and (2) of the Commercial Computer Software-

Restricted Rights at 48 CFR 52.227-19, as applicable. Manufacturer is Aiptek, Inc./20492 Crescent Bay Drive, Suite 104/Lake Forest, CA 92630-0001.

7. If you acquired this product in the United States, this EULA is governed by the laws of the State of California.

8. If this product was acquired outside the United States or its Territories, then local law may apply. If you live in Canada, any other nations in Central & South America, including the Falkland Islands, or the United States, its Territories, and its Commonwealths, and you have questions regarding this EULA, please contact Aiptek at this address: Aiptek, Inc./20492 Crescent Bay Drive, Suite 104/Lake Forest, CA 92630-0001/USA. If you live in any nation that is not located in the areas as listed above, please contact Aiptek Int'l. Inc. at this address: Aiptek Int'l. Inc./No. 5-1 Innovation Road I/Science-Based Industrial Park/Hsin-Chu 300/Taiwan, R.O.C.

TO THE MAXIMUM EXTENT PERMITTED BY APPLICABLE LAW, IN NO EVENT SHALL AIPTTEK OR ITS SUPPLIERS BE LIABLE FOR ANY SPECIAL, INCIDENTAL, INDIRECT, OR CONSEQUENTIAL DAMAGES WHATSOEVER (INCLUDING, WITHOUT LIMITATION, DAMAGES FOR LOSS OF BUSINESS PROFITS, BUSINESS INTERRUPTION, LOSS OF BUSINESS INFORMATION, DAMAGE TO COMPUTER SOFTWARE OR HARDWARE, OR ANY OTHER PECUNIARY LOSS) ARISING OUT OF THE USE OF, INABILITY TO USE THE SOFTWARE PRODUCT OR THE PROVISION OF, FAILURE TO PROVIDE SUPPORT SERVICES, OR INABILITY TO INSTALL THE HARDWARE PRODUCT, EVEN IF AIPTTEK HAS BEEN ADVISED OF THE POSSIBILITY OF SUCH DAMAGES. IN ANY CASE, AIPTTEK IS RELEASED FROM ALL LIABILITY. BECAUSE SOME STATES AND JURISDICTIONS DO NOT ALLOW THE EXCLUSION OR LIMITATION OF LIABILITY, THE ABOVE LIMITATION MAY NOT APPLY TO YOU.

For information on the Limited Warranty, please see the "Statement of Limited Warranty".

For the most updated version of the End-User License Agreement, please visit our webpage at <http://www.aiptek.com>.

For the list of Authorized Resellers, please visit our webpage at <http://www.aiptek.com>.

III. PREINSTALLATION CONFIGURATION

I. Before you begin the hardware installation, there are a few devices that conflict with the tablet. They are listed below:

1. Palm Pilot
2. Trackball or other special mice
3. Digital Camera
4. Scanners*

You need to remove these devices from your computer and remove their drivers. Once the Start Writer PC tablet is successfully installed onto your computer, you can reinstall them.

If you have only one serial port, and are using a serial mouse, you will need to disconnect your mouse in order to attach the tablet.

*If your scanner connects through a scsi card, printer port, or other card that came with your scanner, you will not need to remove it from your system at all.

II. The next thing that needs to be done is to make sure all your serial ports are enabled and that com1 and com2 are available. Follow the steps below to configure your system properly.

1. Go to your Control Panel and double click on the "Modems" icon. When you have the "Modems Properties" Window open, click on "Diagnostics." If your modem is on com3, com4, or com5, just close the window. If your modem is on com1 or com2, write that down. You will need it for later use. Close the "Modems Properties" Window.
2. You will now need to enter BIOS. Enter the section where you can edit the serial port settings. **NOTE:** If you do not know how to enter BIOS, consult the documentation that came with your computer, or call the tech support of the company that built your computer.
 - 2a. IF YOU HAVE TWO (2) SERIAL PORTS ON YOUR COMPUTER:
Set Serial port 1 to com1 (3f8, IRQ 4), and Serial port 2 to com2 (2f8, IRQ3).
 - 2b. IF YOU HAVE ONE (1) SERIAL PORT ON YOUR COMPUTER:
Set the onboard serial port to com2 (2f8, IRQ3).
3. Save your changes and exit BIOS to continue booting your system.

IV. TABLET INSTALLATION

Hardware Installation

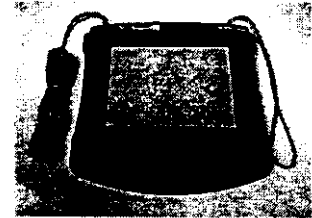
Below are some the pieces of hardware that came with your Start Writer PC tablet package. :



1.



2.



3.

1. Keyboard Power Adapter.
2. 5-pin to 6-pin Adapter.
3. Tablet with serial connector and attached pen.

Here is a picture of the back of a typical mid-tower PC. By each number is a part of that computer we will use to install the Start Writer PC tablet.

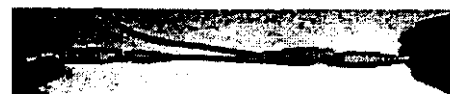
1. PS/2 Keyboard Port.
2. 9-pin male serial port.
3. Keyboard Wire.

Follow these steps to install the Start Writer PC tablet onto your computer. Each number corresponds with a picture below so that you can see how to connect the tablet to your computer.

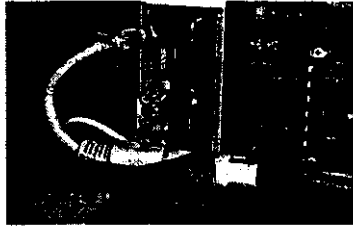
1. Disconnect your keyboard wire.
2. Attach the 5-pin to 6-pin connector to the Keyboard Power Adapter and connect your keyboard into the female end of the Keyboard Power Adapter. How you will connect it depends on which kind of keyboard you have. 2a. shows how to connect it for PS/2 keyboards; 2b. shows how to connect it for standard keyboards. The keyboard connector itself is shown on the righthand side of the picture.
3. Plug the male connector of the Keyboard Power Adapter into your keyboard port.
4. Attach the serial connector of your tablet to an available 9-pin serial port. If you have two serial ports, attach the tablet to the serial port that is set to com2.
5. Take the remaining wire free wire from the Keyboard Power Adapter, and plug it into the hole on the tablet's serial connector.



2a.



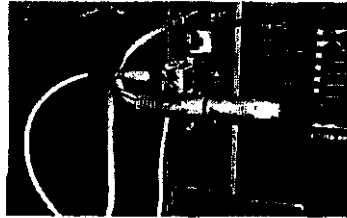
2b.



3.



4.



5.

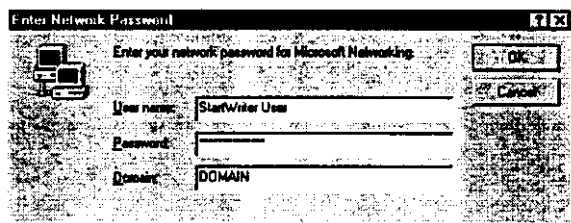
The tablet hardware is now set up correctly! Please proceed to the Driver Installation section on the next page.

Driver Installation

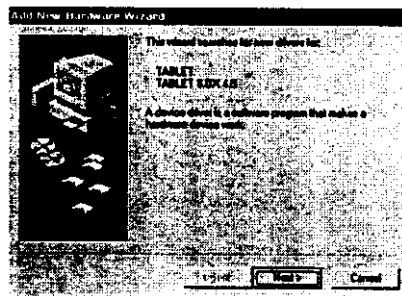
Windows 98 Autodetection

Follow the instructions below to install the driver for the Start Writer PC tablet. Each number corresponds with a picture below to aid in the installation process.

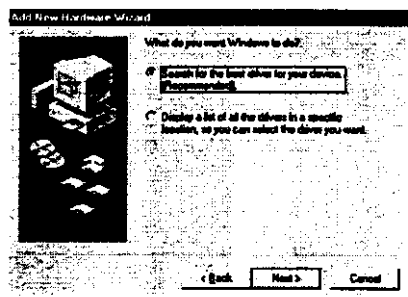
1. Turn on the computer by pressing the power switch (no picture shown for this step).
2. *If you have to log into Windows*, enter your username and password, as autodetection will proceed after this. *If you do not have to log into Windows*, proceed to step 3.
3. Windows will say that it has found new hardware, and will then bring up a wizard to search for the tablet driver. Click "Next."
4. Windows will then ask you if you want Windows to search for the driver or select it yourself. Click the button next to "Search for the best driver for your device [Recommended]" and click "Next."
5. The Windows Wizard will then ask you where it needs to search for the driver. Insert the CD into your CD rom drive, click the box next to "CD-ROM drive," and click "Next."
6. Windows will find the driver and ask if this is the driver you want. Click "Next."
7. The install program will copy the files to your hard drive.
8. Click "Finish."
9. Remove the CD from your CD rom drive and click "Yes."



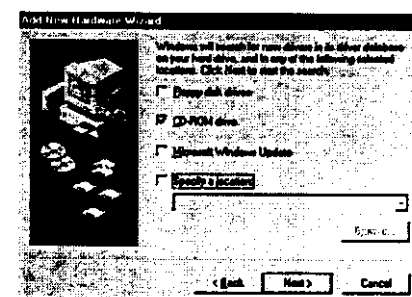
2.



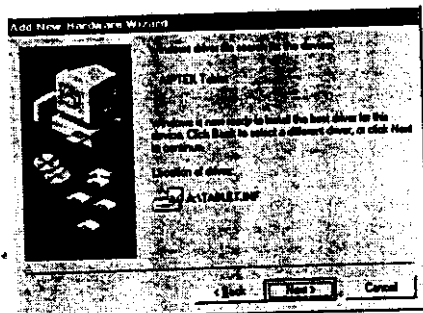
3.



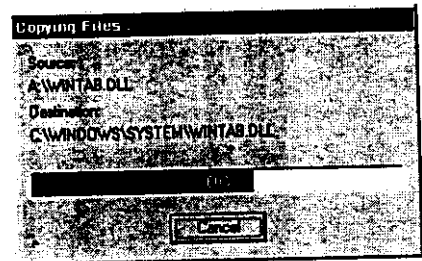
4.



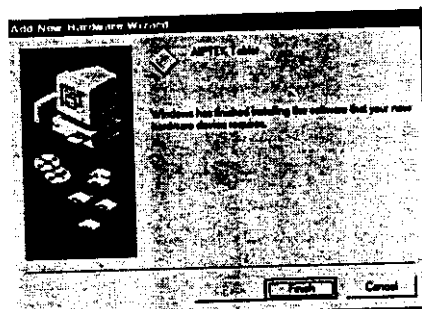
5.



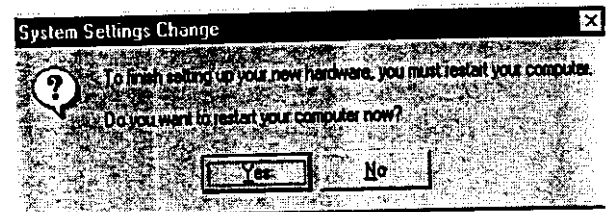
6.



7.



8.

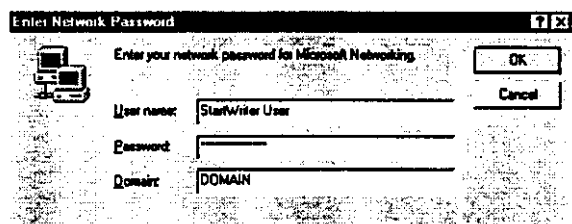


9.

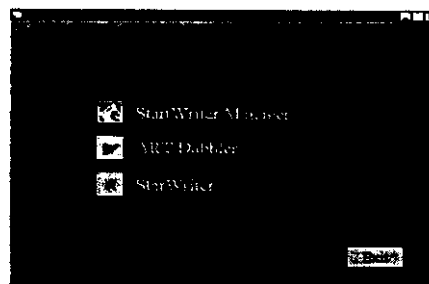
4/10

No Autodetection

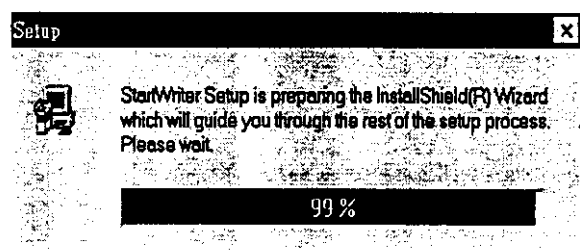
1. Turn on your computer by pressing the power switch (no picture shown for this step).
2. *If you have to log into Windows*, enter your username and password, as autodetection will proceed after this. *If you do not have to log into Windows*, proceed to step 3.
3. Place the CD into your CD rom drive (no picture shown for this step).
4. The CD will automatically start. Click "Pen Manager" to start the install the tablet driver.
5. Please wait while the system is getting ready.
6. Click "Next."
7. The driver install program will show that the driver is being installed onto your system.
8. You will be prompted to restart your computer. Remove the CD from your CD rom drive and click "OK."



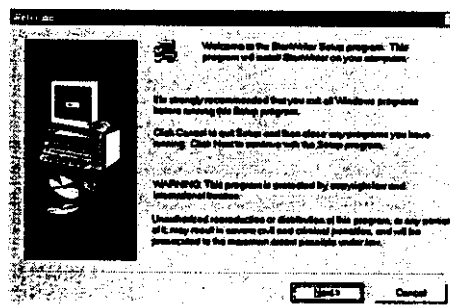
2.



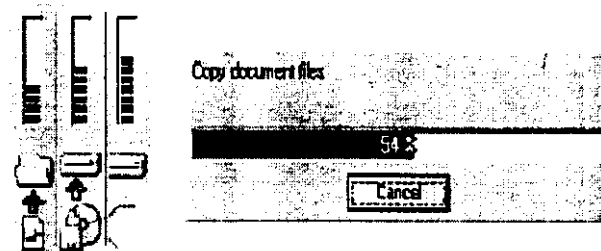
4.



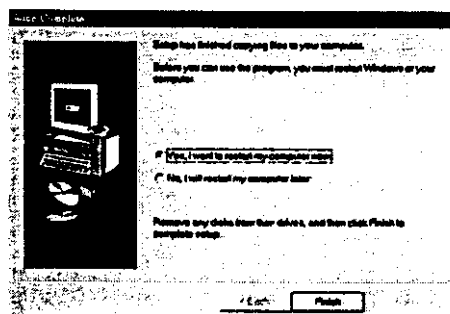
5.



6.



7.

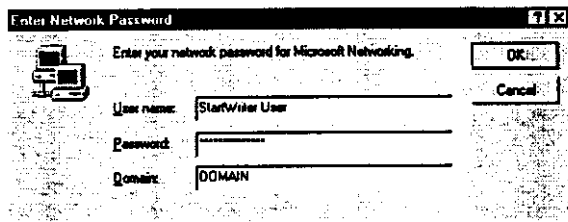


8.

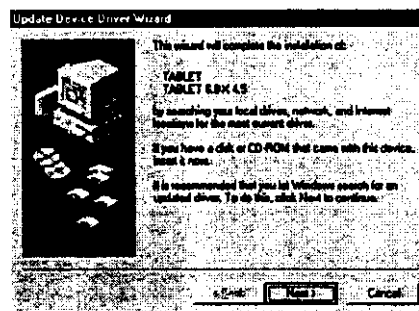
5/10

Windows 95 Autodetection

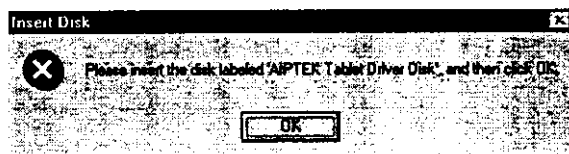
1. Turn on the computer by pressing the power switch (no picture for this step).
2. *If you have to log into Windows*, enter your username and password, as autodetection will proceed after this. *If you do not have to log into Windows*, proceed to step 3.
3. Windows will say that it has found new hardware. Click "Next."
4. Windows will ask you to put the driver disk into its drive. Place the CD into the CD rom drive and click "OK."
5. Click "Finish."
6. In the area in blue, type in "D:\\" (where D is the letter of your CD rom drive) and click "OK."
7. Click "Yes" to restart your computer.



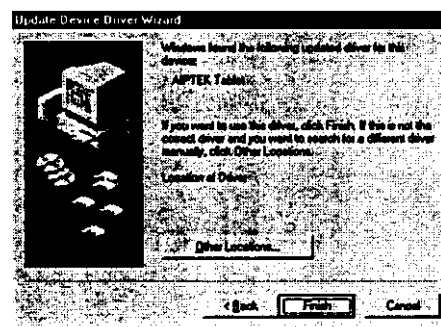
2.



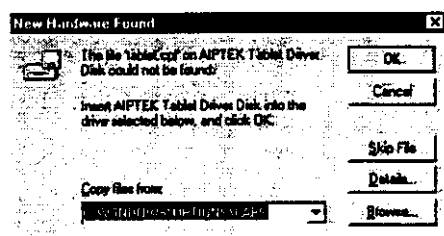
3.



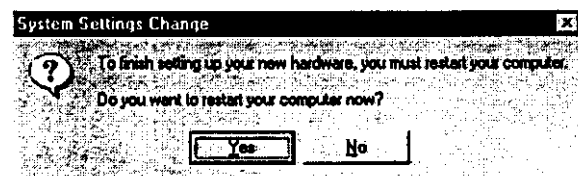
4.



5.



6.

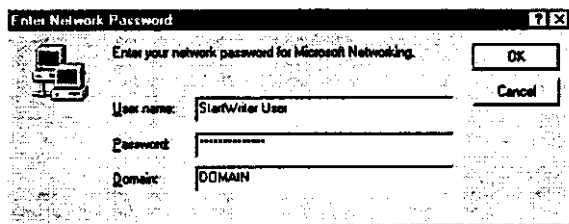


7.

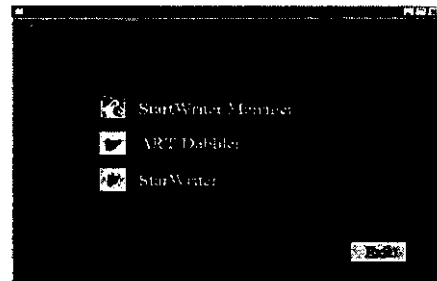
No Autodetection

6/10

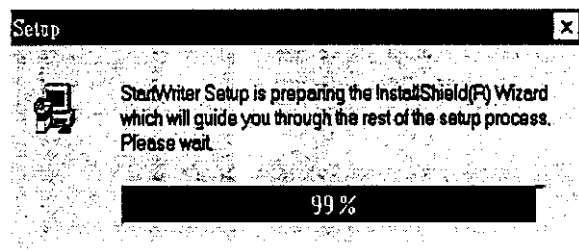
1. Turn on your computer by pressing the power switch (no picture for this step).
2. *If you have to log into Windows*, enter your username and password, as autodetection will proceed after this. *If you do not have to log into Windows*, proceed to step 3.
3. Place the CD into your CD rom drive (no picture for this step).
4. The CD will automatically start. Click "Pen Manager" to install the tablet driver.
9. Please wait while the system is getting ready.
10. Click "Next."
11. The driver install program will show that the driver is being installed onto your system.
12. You will be prompted to restart your computer. Remove the CD from your CD rom drive and click "OK."



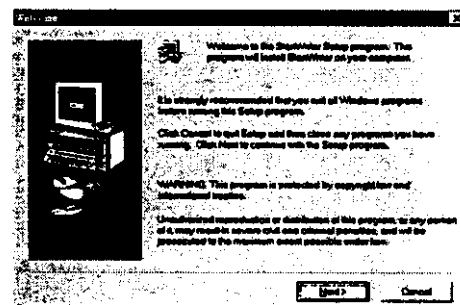
2.



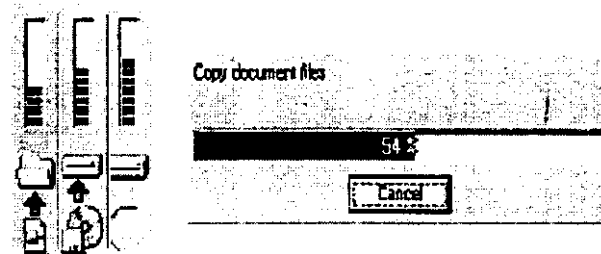
4.



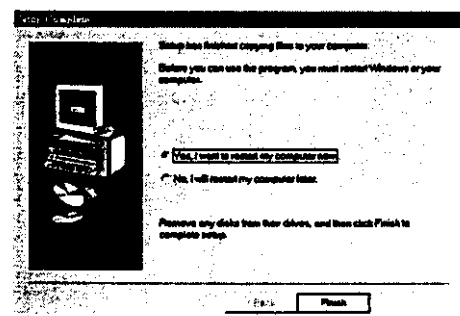
5.



6.



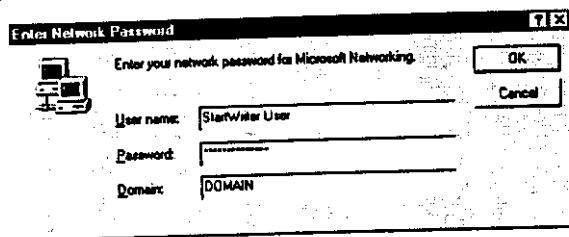
7.



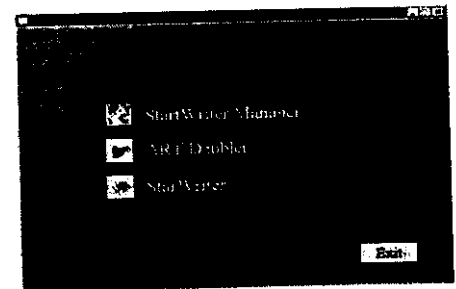
8.

Windows NT Workstation and Server

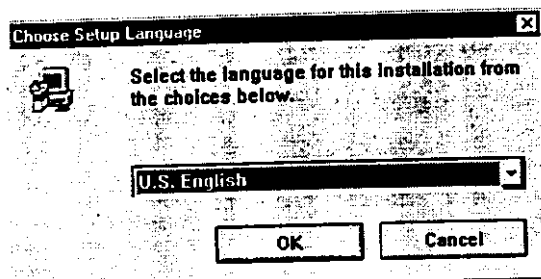
1. Turn on the computer by pressing the power switch (no picture for this step).
2. Log into Windows. You do not need administrator privileges to install the tablet.
3. Insert the CD into your CD rom drive (no picture for this step).
4. The CD will automatically start. Click "Pen Manager."
5. Choose either U.S. English or Traditional Chinese.
6. Click "Next."
7. The driver install program will show that the driver is being installed.
8. Select "Yes" and click "Finish" to restart.



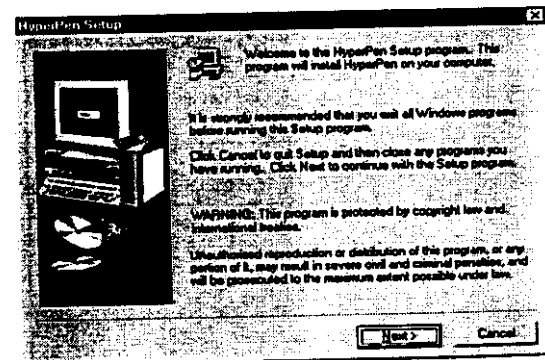
2.



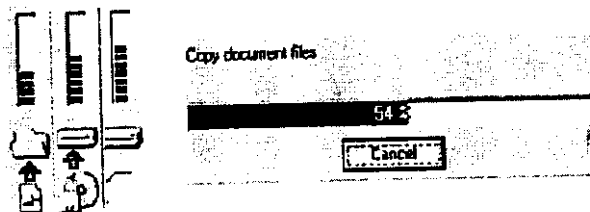
4.



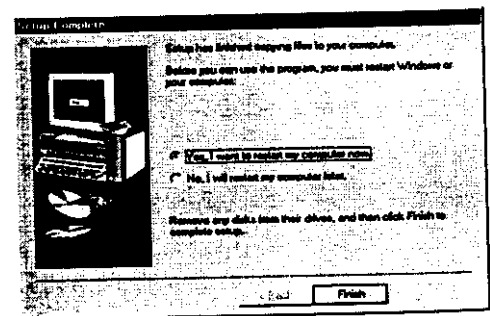
5.



6.



7.



8.

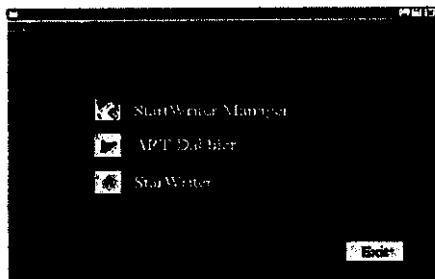
VI. ADDITIONAL SOFTWARE INSTALLATION

The following are the instructions for installing the additional software that came with the StartWriter PC tablet. You do not need to install this software in order to get the tablet operational. Once the tablet is operational, this extra software, if installed, will enhance your use of the of the StartWriter PC tablet.

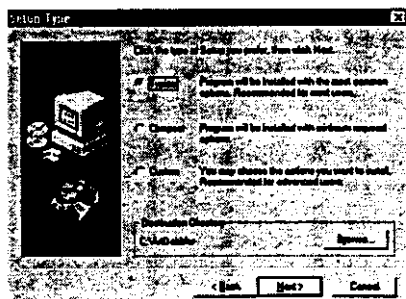
NOTE: There is no Windows NT version of the Art Dabbler program.

Art Dabbler

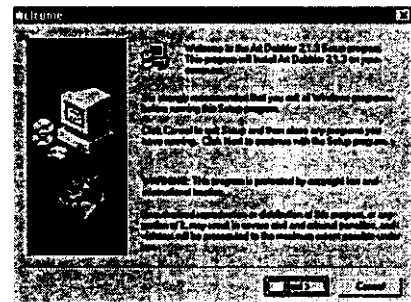
1. Insert the CD into your CD rom drive; the CD will automatically start (no picture shown for this step). Press the Art Dabbler button to begin installation.
2. Click "Next."
3. We recommend selecting "Typical" for installing Art Dabbler. If you are an advanced user, you can click "Custom." If you are trying to conserve hard drive space, click "Compact." Once you've made your choice, click "Next."
4. We recommend leaving Art Dabbler in its default Start Menu form (as shown). If you are and advanced user, you can have Art Dabbler placed into another directory. Click "Next."
5. Confirm that what is shown is what you want. Then click "Next."
6. The install program will show that it is copying the needed files to your hard drive.
7. If you want to view the readme file (recommended), select "Yes" and click "Next"; otherwise, do not select the "Yes" box. Then click "Next."



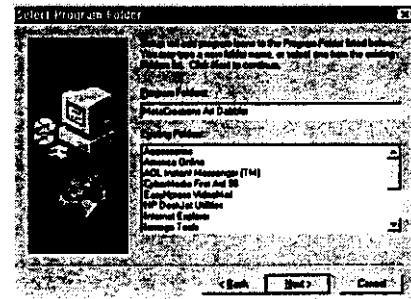
2.



4.

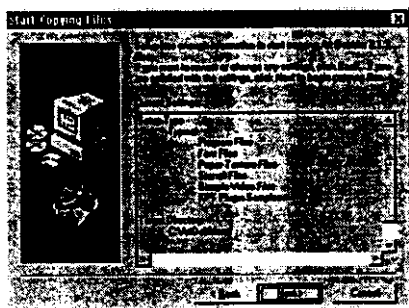


3.



5.

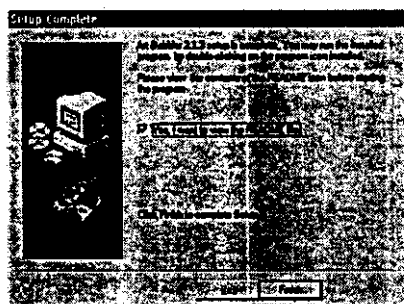
9/10



6.



7.



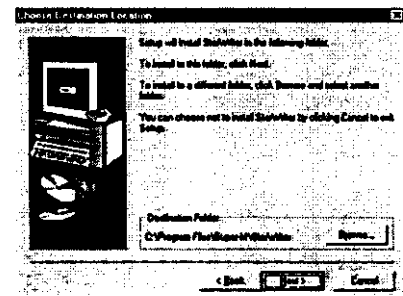
8.

Star Writer

1. Insert the CD into your CD rom drive (no picture shown for this step).
2. Click the "Star Writer" button.
3. If you want the Star Writer program installed to a different directory, click "browse" and specify the directory you want it in. Otherwise click "Next."
4. The files will be copied to your hard drive.
5. Click "Finish" to finish installation of Star Writer.



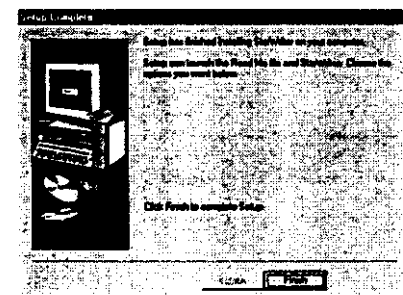
2.



3.



4.



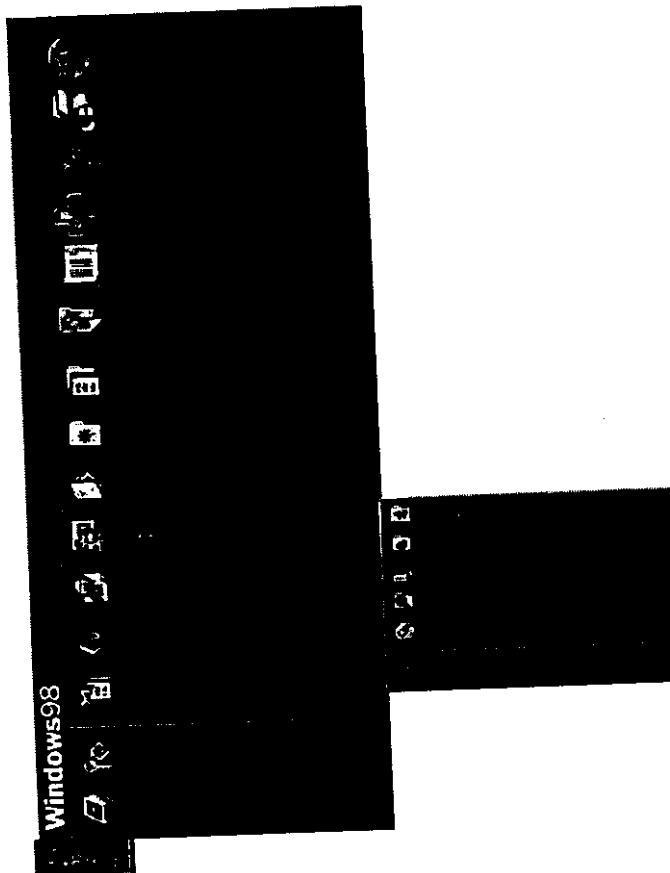
5.

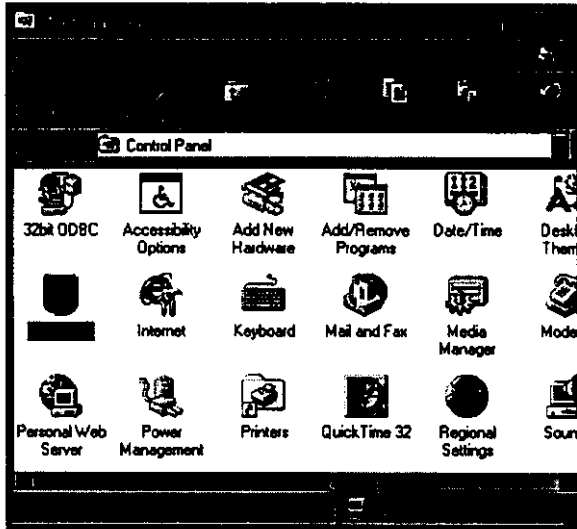
VII. HOW TO USE THE TABLET

Tablet Manipulation

This section will teach you how to manipulate the tablet in certain ways in order to be able to use it at its maximum potential. Each number corresponds with a picture.

1. Open your Control Panel. This picture shows you where to go.
2. Double click on the Start Writer PC tablet icon (shown here).
3. You have now opened up the Start Writer PC tablet Icon. Shown are four separate tabs: About, Buttons, Mouse, & Control.
 - 3a. You can do several things in the about tab: set your tablet for absolute or relative control and change your measurements from inches to centimeters.
 1. To change your tablet from absolute to relative mode, simply click on the relative button.
 2. To change your tablet measurement from inches to centimeters, simply click the centimeter button.





2.



3.



3a1.



3a2.

4. The buttons tab has several features to it. You can change how the buttons select icons, change the buttons offset value, and change the pressure setting of the Pen.

4a. To change how the top button clicks, select the arrow next to the combo box with "left double click" shown in it. A small window will come down. Scroll through that window until you find the style of clicking you want for that button (i.e. "right click," "left single click," etc.), and select it.

4b. To change how the bottom button clicks, select the arrow next to the combo box with "left double click" shown in it. A small window will come down. Scroll through that window until you find the style of clicking you want for that button (i.e. "right click," "left single click," etc.), and select it.

4c. This will show you how to change the offset value of the tablet.

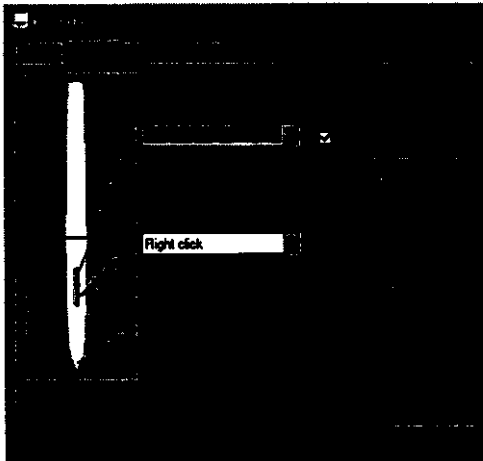
1. Deselect the "Auto Setting" box.

2. Click the "Adjust" button. Keep the Pen just above the tablet (1/4" or less) and move it around. But do not touch the tablet at all.

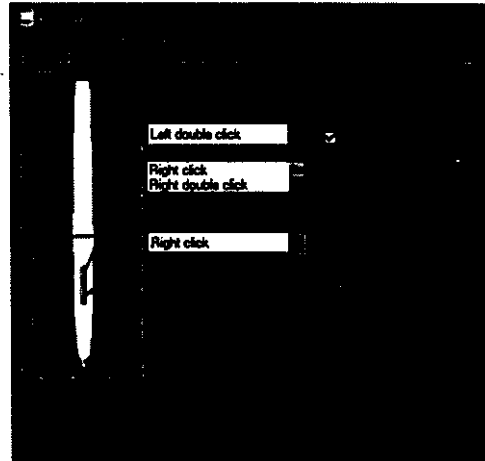
3. When the "Adjusting, please wait" message turns to "O.K.," click OK.

4d. To change the click pressure of the Pen, simply click along the line below "Click Pressure."

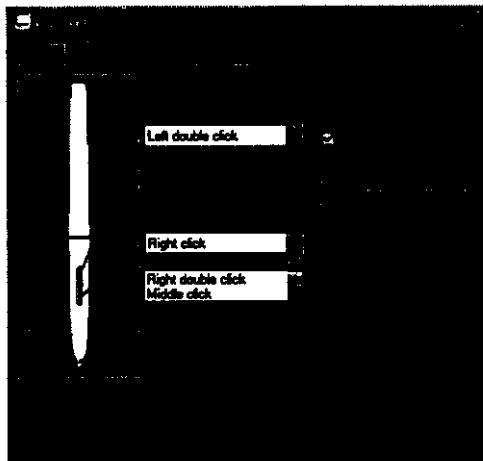
4e. To test the click pressure settings after changing the click pressure, press "Test" on the Buttons tab. Then draw in the box that is shown, and press down on the pen until you reach pressure level 512. If you reach this level, then your click pressure is working right.



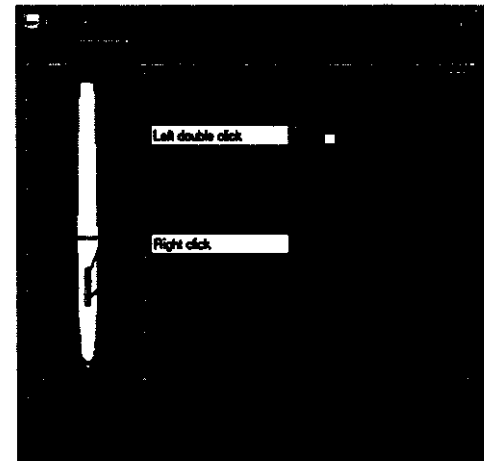
4.



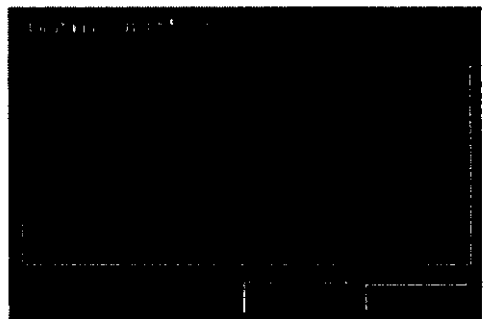
4a.



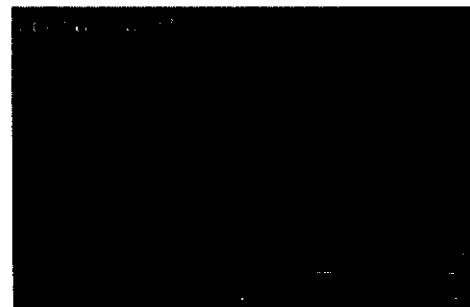
4b.



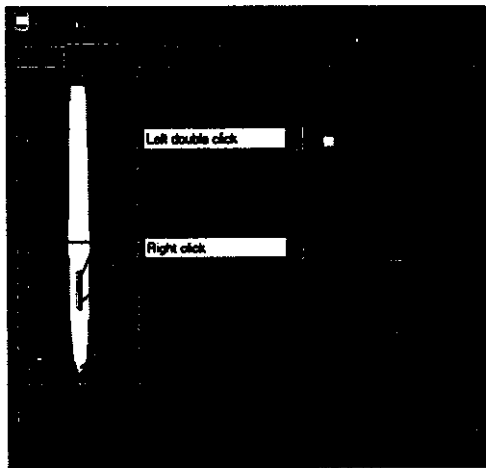
4c1.



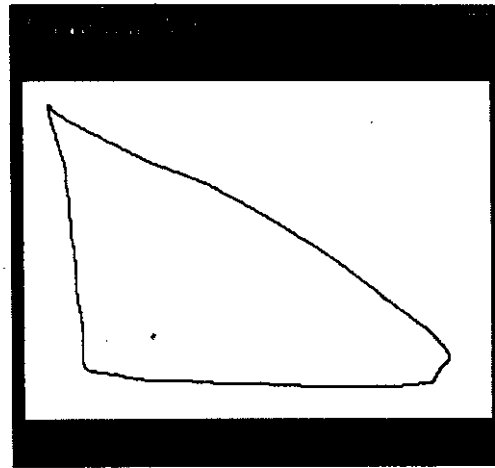
4c2.



4c3.

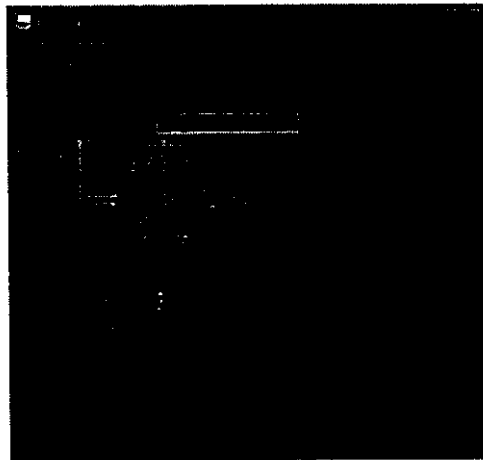


4d.



4e.

5. The next tab is the "Mouse" tab. This is for those who have purchased the Start Writer PC tablet model 6000 or 6001 only.



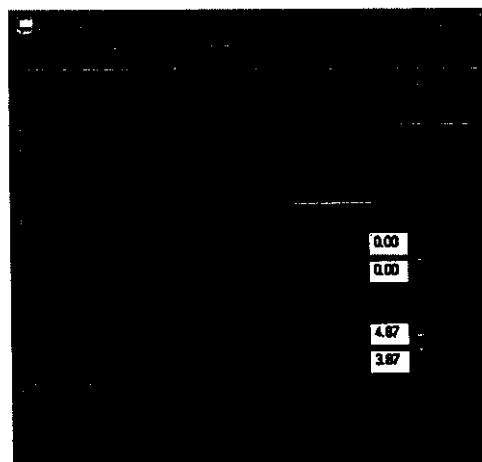
5.

6. This is the Control tab. Here you can define the work area on the tablet.

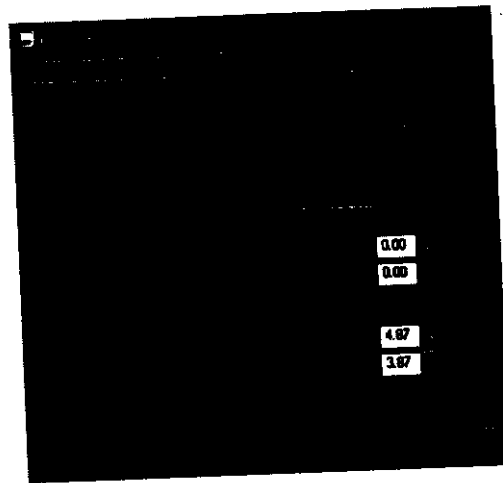
6a. To define the work area, move the Pen the black area. Press down on it. A cross will form on the black area, and use the crosshairs to define the workspace.

6b. Move the crosshairs to another part of the box and press down on the Pen. The rest of the work area box will be formed.

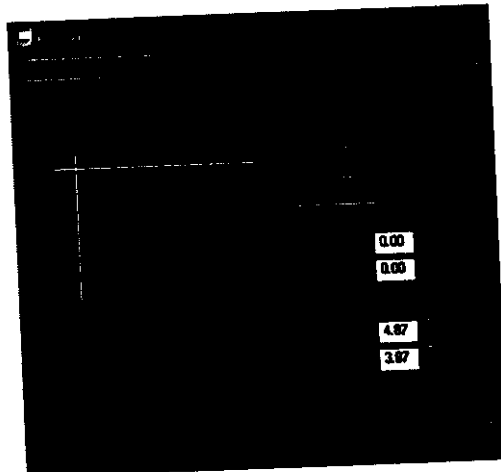
6c. Your work area is now defined. The area in black shows the customized work area that you created.



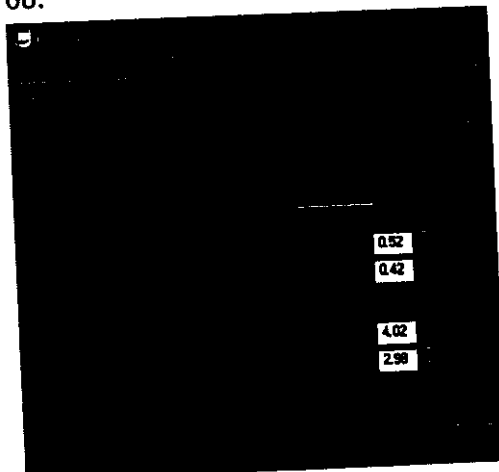
6.



6a.



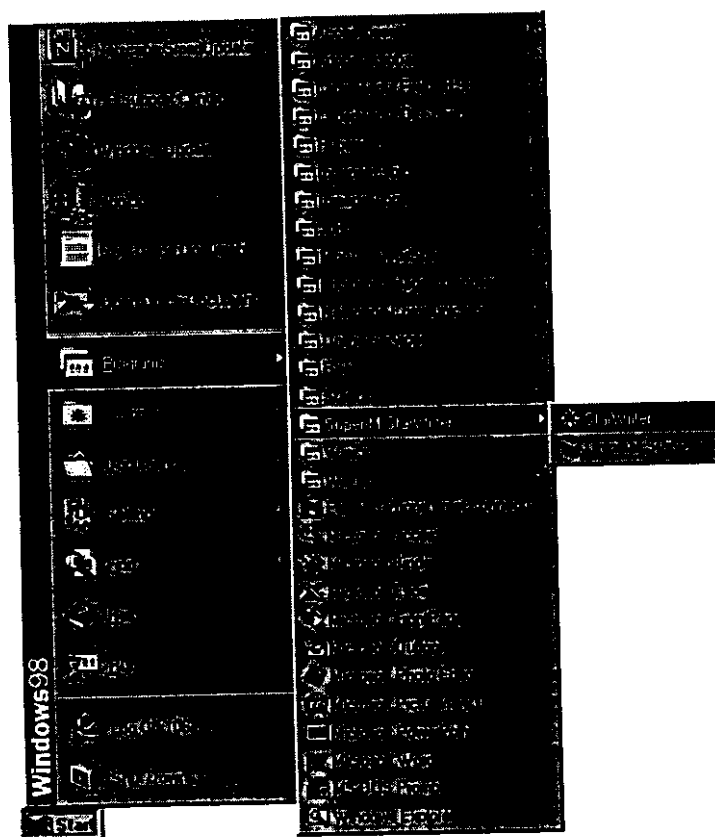
6b.



6c.

The next few pages will show you how to use the Star Writer program. The first five numbers walk you through starting up the program, and will walk you through the first few screens that will show up after the first time you run it.

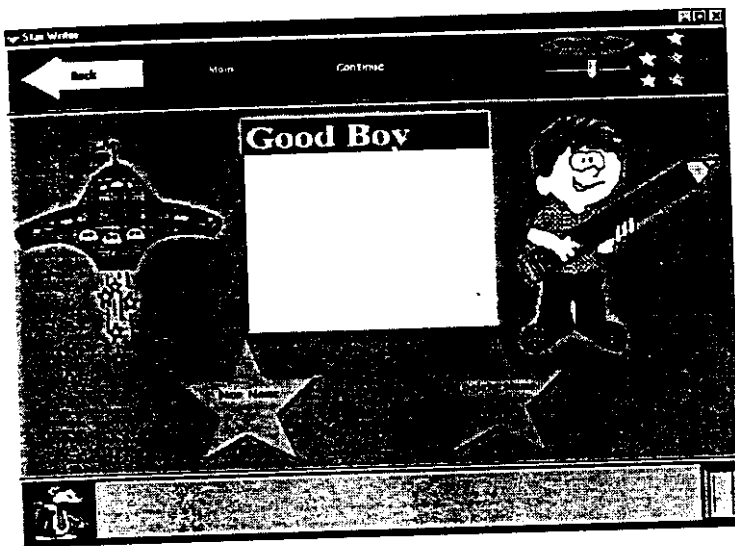
1. Start up the Star Writer program by clicking on the Star Writer button.
2. The Star Writer program will start.
3. The first menu that you will see is the names menu. The "Good Boy" name is already entered, as that is the example.
4. Click "New Name" (the left pink star) and type in a name. Then click "OK" to continue.
5. The paint page will show up first. When you are done drawing, click "Continue" to begin writing.



1.



2.



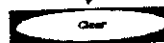
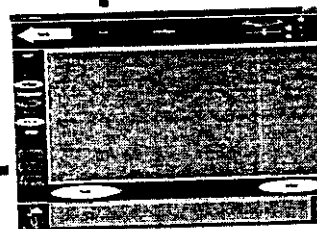
3.



4.

5. This is the paint program, which will show up after you enter your name into the database. The buttons to use the paint program are described as below:

1. This is your color and paintbrush width bar. Click any one of the color tabs to change the color that you want to use to paint with. To change the width of your lines, click the top blue button for thin, middle blue button for medium, and the bottom blue button for thick width.



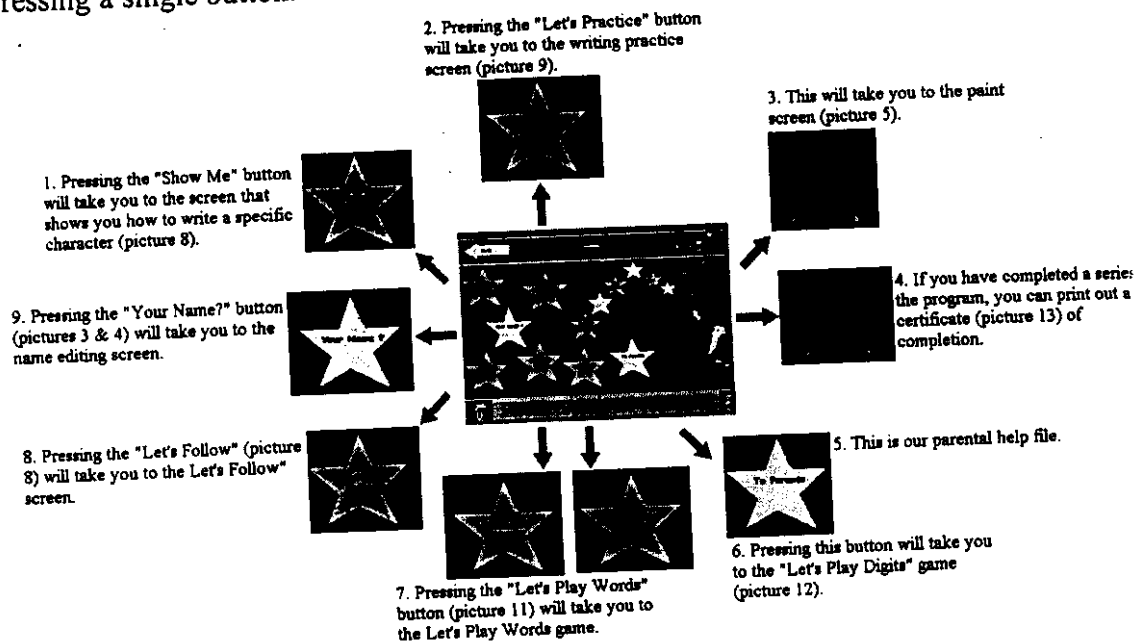
2. Pressing the "Clear" button will clear all the work you've done in the paint program and give you a fresh screen.



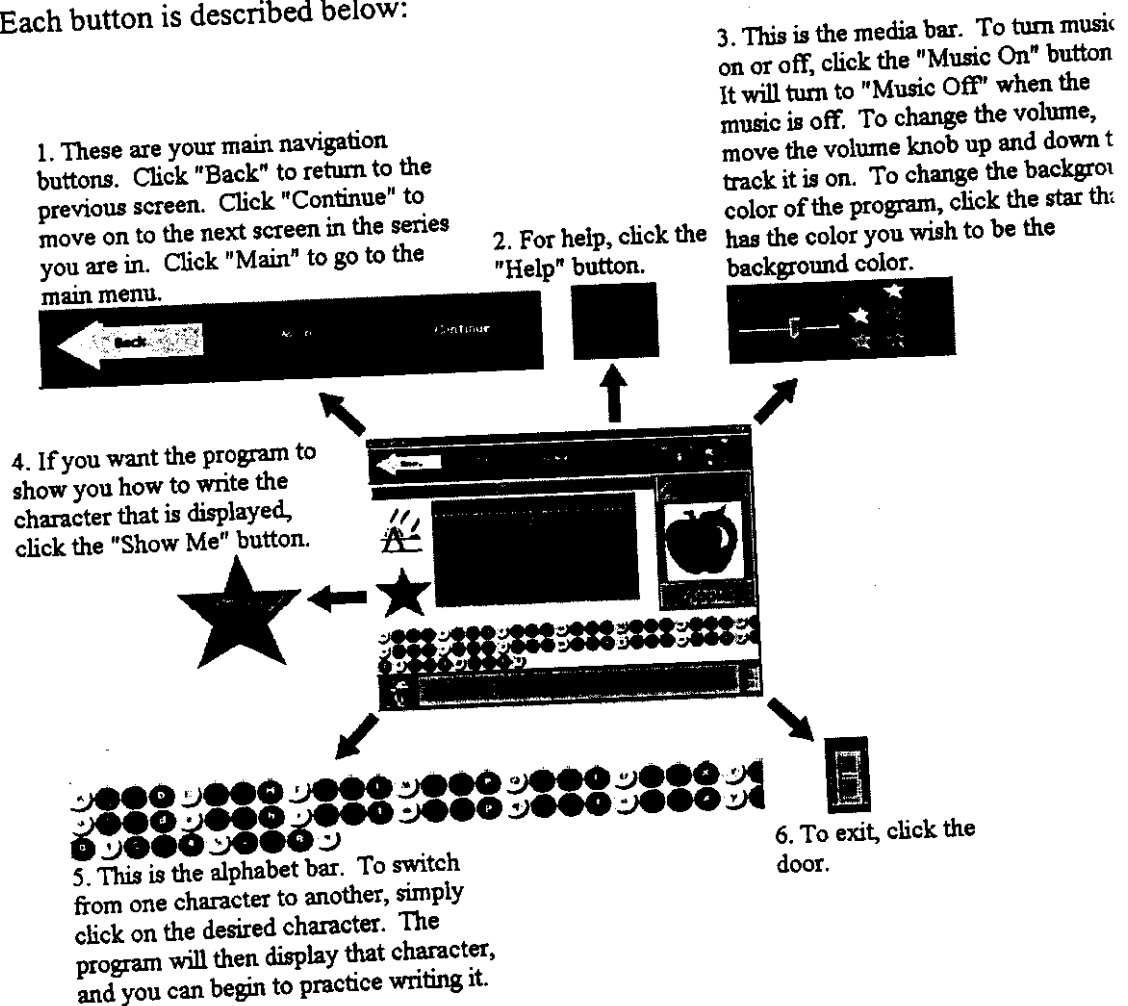
4. When you're done familiarizing yourself with the paint feature, click the "Main" button to go to the main menu.

3. Press "Save" to save your work, press "Print" to print your work.

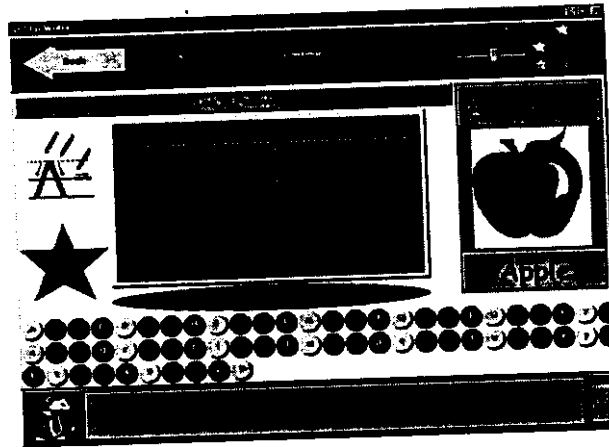
6. This is the main menu. Here you can go to every single area of the program by pressing a single button. Each button is described below:



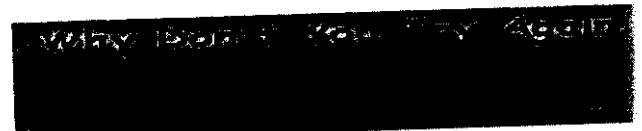
7. This is the "Show Me" screen, where you learn how to write individual characters. Each button is described below:



8. This is where you begin to practice writing. The circle on the top of the character is your start point. Begin writing using your pen the way the previous screen showed. When done writing it, click the "Continue" button. It will then have you write the character two more times for practice. After you write the character and click the "Continue" button, a message will sound, and will also show up in the gray area at the bottom of the screen. It will either be a positive (picture 8a.) or a "try-again" style message (picture 8b.)

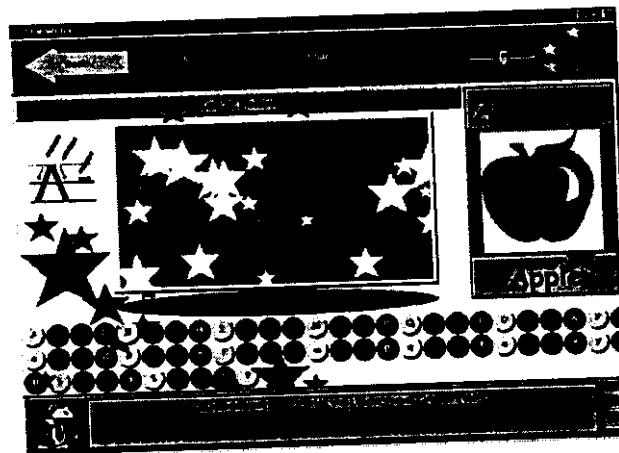


8a.



8b.

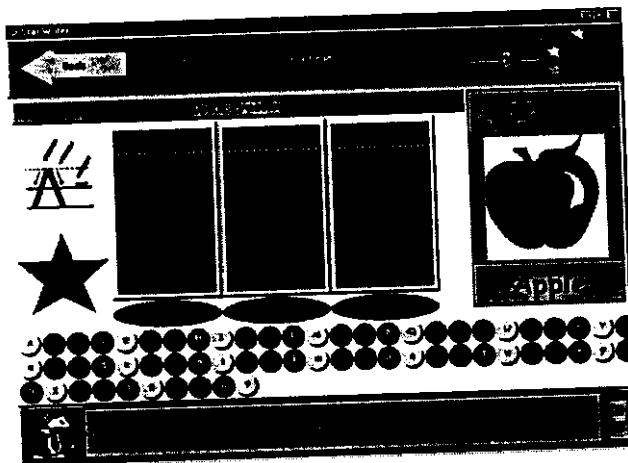
If you do not do the character correctly all three times, it will have you return to this same character at the end of doing the entire section (e.g. capitals, lower case, numbers). If you cannot remember how to write the character, click the "Show Me" star. When you successfully write the character, the screen will look like this (picture 8c):



8c.

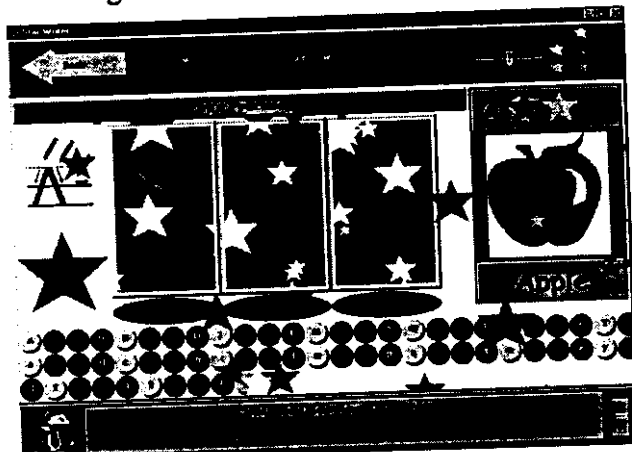
Click "Continue" to go on to the next screen.

9. The program will now have you write in the character in three separate boxes. It does not give an outline, so you must do the character from memory. If you do a character incorrectly, press the "Clear" button below the box that you want to clear. When you're done writing the characters in each box, press the "Continue" button.

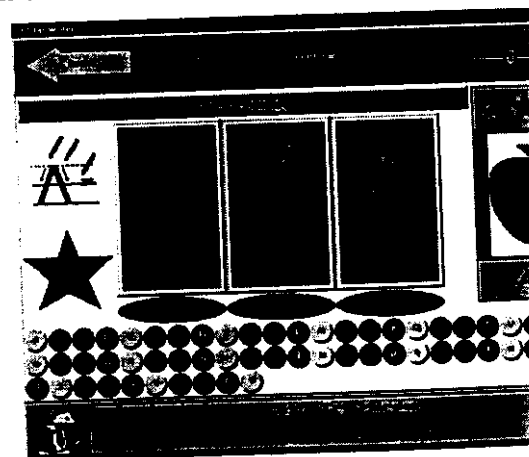


9.

If you write the characters correctly, then this screen will show up (picture 8a.). Press the "Continue" button to go on. Otherwise, this screen (picture 8b.) will show up. The program will show you in each box how to write the character. You will be able to try again twice more before it moves you on to the next character in the series.



9a.

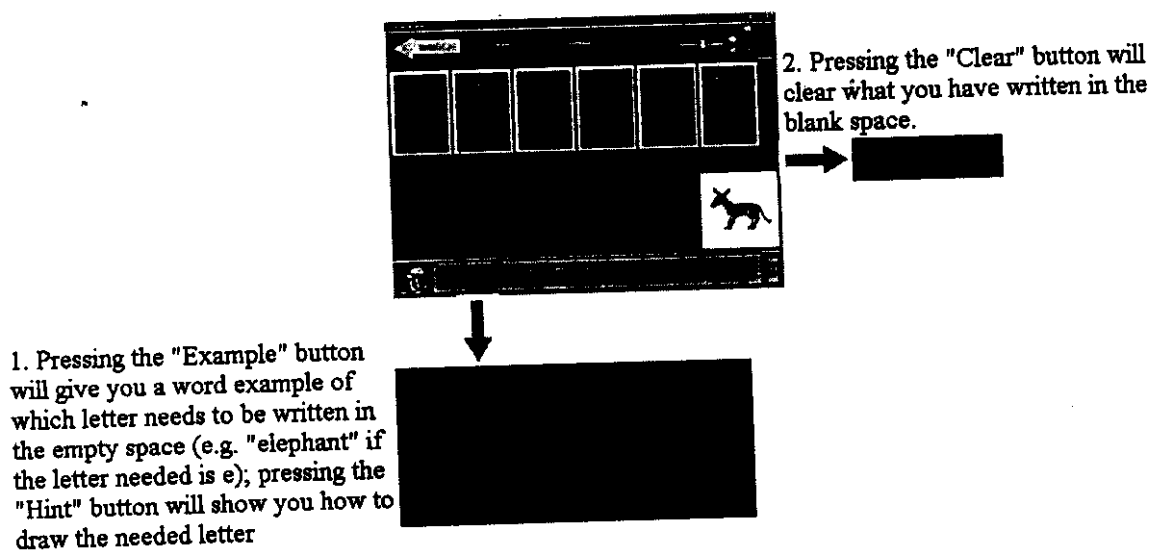


9b.

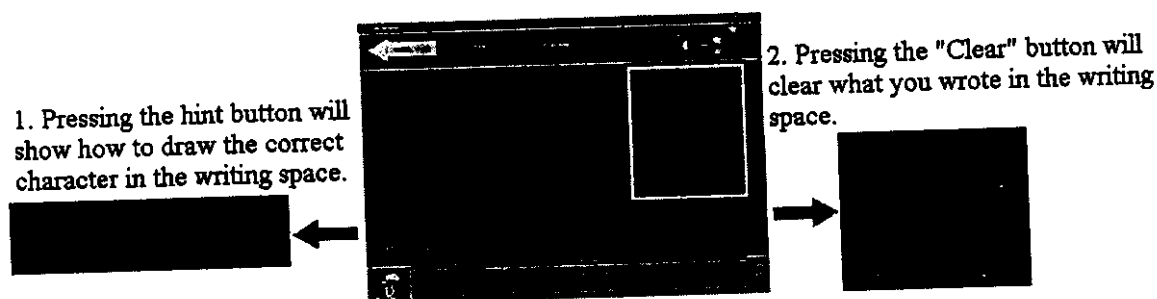
This will continue until each series is done. Let's say that you do all the capital letters, but cannot do the capital C, when the capital Z is done, it will return you to the capital C until it is done correctly. Then it will move on to the lower case letters, and finally to numbers.

10. Press the "Main" button at the top to continue.

11. This is the "Let's Play Words" game. You will need to write the appropriate letter into the blank space in the word. Each button is described below:



12. This is the "Let's Play Digits" game. Here you will be asked a question, and be required to write the correct number in the writing space. Each button is described as below:



13. This is the certificate page. In order to get a certificate, you will need to get at least one blue star in each series. As you can see, there are blue stars in each section. You need at least one blue star for each letter in that series in order to get a certificate. If you do not have that, and you press the certificate button in that unfinished series, the program will say that you must have a yellow or blue star in each character of that series in order to obtain a certificate. A red star in each series will get you a better certificate.

Star Writer

Back Main Continue

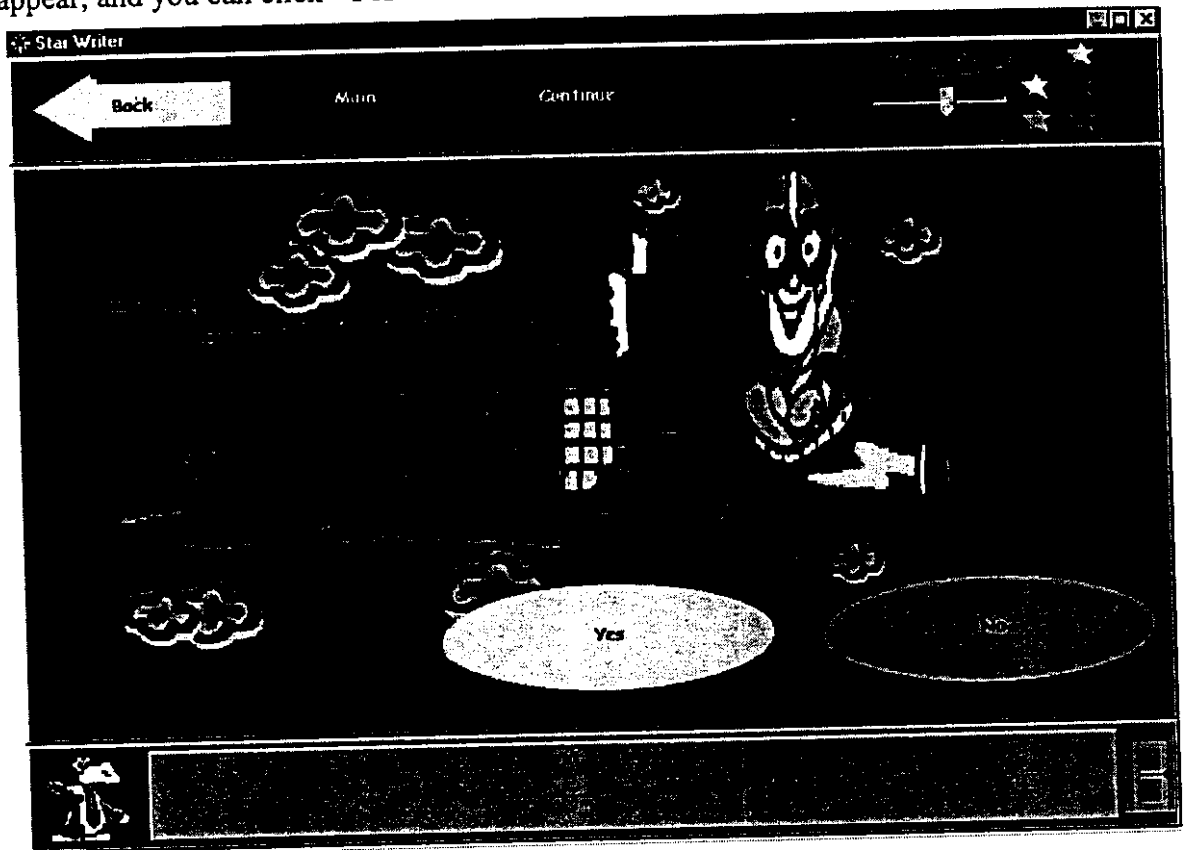
Good Bye

Small letters			Capital letters			Digits		
a ★	b ★	c ★	A ★	B ★	C ★	0 ★	1 ★	2 ★
d ★	e ★	f ★	D ★	E ★	F ★	3 ★	4 ★	5 ★
g ★	h ★	i ★	G ★	H ★	I ★	6 ★	7 ★	8 ★
j ★	k ★	l ★	J ★	K ★	L ★	9 ★		
m ★	n ★	o ★	M ★	N ★	O ★			
p ★	q ★	r ★	P ★	Q ★	R ★			
s ★	t ★	u ★	S ★	T ★	U ★			
v ★	w ★	x ★	V ★	W ★	X ★			
y ★	z ★		Y ★	Z ★				

13.

14. This is the exit screen. If you want to exit, click the "Yes" button, otherwise click the "No" button to stay in the program.

NOTE: When you are in any other screen, and you want to *exit and save*, click the door as shown below. Clicking the "X" at the top will exit, but will not save any work. You will need to click the door in order to exit. Once you click the door, this screen will appear, and you can click "Yes" in order to exit.



14.



You have now finished learning the basics of Star Writer! You are ready to begin using the Star Writer to learn how to write! Simply go to the Super-M Star Writer Menu on your Start Menu, click "Star Writer" and you can begin learning to write!

VI. TROUBLESHOOTING

This section is a guide for those who are having trouble getting the Start Writer PC tablet to work on their computer system. Each section is broken down into sub-sections describing the various problems that some Start Writer PC tablet users run into after following the install directions in this booklet or in the Quick Install Guide. The directions to solve them are found below each problem. If you did not follow the instructions in either this booklet or the Quick Install Guide, please uninstall the tablet, remove it from the back of your computer, and reinstall following the steps in this booklet. Find your Operating System below to find the specific tips for getting the Start Writer PC tablet to work on your computer.

GENERAL START WRITER PC TABLET NOTE: On approximately 90% of all Start Writer PC tablet installations, the Start Writer PC tablet will request com2. The other 10% will ask for com1.

Windows 98 & 95

These first two problems are very similar in what causes them. The solution is the same for both problems. They are very rare problems, so if you do not have them, skip this sub-section.

Problem: 1. During the reboot process after installing the tablet driver, a gray window appears on a black background saying, "While initializing device tablet, Windows Protection Error. You need to restart your computer."

2. During the reboot process after installing the tablet driver, the beginnings of the Windows Desktop appears, and so does the hourglass. But the screen just freezes there, and does not ever change.

Solution: If you have either of these two problems, this means that your computer is totally rejecting the tablet. You will not be able to use it on that specific system at all. Here are the steps to uninstall the tablet from that computer:

1. Physically remove the tablet from your computer.
2. Reboot the computer.
3. Because Windows did not load properly, your computer will boot into a DOS screen with eight (8) boot options listed. Choose "Safe Mode," which is option three (3).
4. Once you've booted into Safe Mode, go to your Control Panel.
5. Double click on "Add/Remove Programs." Highlight "AipTek Tablet Driver" and click the Add/Remove button.
6. Click "OK" to restart your computer.

Problem: 1. After the computer has finished rebooting (after the installation of the tablet driver), you attempt to move the cursor with the tablet, but there is no response.

Solution: This is the most common problem experienced by Start Writer PC tablet users who do run into problems. There are several factors that could cause this problem, and they are relatively easy to fix.

1. *Old tablet drivers.* For those who previously had other brands of tablets on their computers, an old driver may be lingering around. Go to "Add/Remove Programs" in your Control Panel. Check to make sure the old driver is gone. Then, go to the "System" icon in the Control Panel, and click on the Device

Manager tab. Look in the Device Manager to make sure there is no listing for your old tablet. If there is, immediately delete it.

2. *Disabled Serial Ports.* Disabled serial ports will prevent any and all serial devices from being used on that specific port. You will need to get into your BIOS and enable the serial port. If you do not know how to do this, please consult the documentation that came with your computer, or call the tech support department of the company that built your computer. You will want to set the serial port to the address 2F8, IRQ 3. NOTE: By default, Gateway, Dell, Acer, and AST computers all have Serial B disabled.
3. *Modem on com2.* Some computers will have the modem on com2. This is a problem because the Start Writer PC tablet generally asks for com2 (see "General Start Writer PC tablet Note" above). It is recommended that you move your modem to com3. If you do not know how to do this, please consult the documentation that came with your computer, or call the tech support department of the company that built your computer.
4. *Misassigned com port.* Some users will have one serial port, and it will be set to the wrong com port address that the tablet is asking for. Boot into BIOS. Go to the area where you can edit the addresses assigned to each serial port. If the address is 3F8, set it to 2F8; if it is 2F8, set it to 3F8. If it is set to 3E8 or 2E8, set it to 2F8. If that doesn't work, then set it to 3F8.

Windows NT

Problem: During the bootup sequence after installing the tablet, you get an error message stating that "... tablet.dll failed to initialize ... the process is terminating abnormally."

Solution: The problem is that the tablet is wanting one com port (usually com1), but is hooked up to a serial port that assigned another com port. There are two solutions to this problem.

1. Simply take the tablet serial connector, move it to the other 9-pin serial port, and reboot the computer.
2. If there is only one serial port, boot your computer into BIOS. Go to the section where you can edit the addresses for each serial port. If the address is set to 3F8, set it to 2F8; if it is set to 2F8, set it to 3F8. If it is set to 3E8 or 2E8, set it to 2F8. If that doesn't work, then set it to 3F8.

Problem: After installing the tablet driver, and after rebooting the computer, there is no cursor movement. You go to your Event Viewer, and you find a message that says, "The hardware resources for com1 are already in use by another device."

Solution: The tablet is asking for com1, but there is another device using it.

1. Find the device that is using com1. This is generally an external peripheral, although it can also be old devices that you physically removed from your system, but where the driver was not removed.
2. You can either move the device to another com port or temporarily uninstall it and reboot the computer. If you decide to attempt to move it to another com port, consult the documentation that came with your computer, or call the tech support department of the company that built your computer.

Defective Hardware test

If you believe that you have defective hardware, try the tests below to determine if you have defective hardware or not.

Problem: The Start Writer PC tablet installs correctly, and you cursor movement with the Pen is random and difficult to control.

Solution: The problem is either a bad tablet or bad Pen.

In all cases of defective hardware, please call Aiptek's Tech Support department. They will be able to assist you with determining the problem, solving it, and/or replacing defective hardware. For more information, please EULA and Statement of Limited Warranty in this booklet.

STATEMENT OF LIMITED WARRANTY

Aiptek, Inc. ("Aiptek") warrants the enclosed device ("HARDWARE PRODUCT") for a period of six months from the date of purchase to be free from physical, operational, and workmanship defects. Aiptek also warrants that the HARDWARE PRODUCT will perform in accordance with the accompanying written materials during the period that the Limited Warranty is active. Technical Support provided by Aiptek shall be available as described in applicable written materials provided to you by Aiptek during the period that the Limited Warranty is active. Aiptek Technical Support Representatives will make commercially reasonable efforts to solve any problems that may arise from the installation and/or use of the HARDWARE PRODUCT. Some states and jurisdictions do not allow limitations on duration of an implied warranty, so the above limitation may not apply to you. To the extent allowed by applicable law, implied warranties on the HARDWARE PRODUCT, if any, are limited to thirty (30) days.

Aiptek reserves the right to repair and/or replace defective HARDWARE PRODUCTS, including the repair and/or replacement of individual defective components of the HARDWARE PRODUCT, and the repair and/or replacement of defective disks that contain software from Aiptek's suppliers, at its discretion. Aiptek is the sole entity that will determine whether or not the HARDWARE PRODUCT, or an individual piece or components of the HARDWARE PRODUCT, is/are defective. Aiptek also reserves the sole right to decide whether or not the HARDWARE PRODUCT, or piece(s) of the HARDWARE PRODUCT will be repaired or replaced. This Limited Warranty only covers all components of the HARDWARE PRODUCT enclosed herein that have been designed and/or built by Aiptek, Inc., or Aiptek Int'l, Inc. Aiptek does not guarantee any and all components of this HARDWARE PRODUCT that were not designed, programmed, and/or built by Aiptek, Inc. itself, or by Aiptek Int'l, Inc.

Aiptek Technical Support is limited to helping the End-User with installation of the HARDWARE PRODUCT only. Aiptek Technical Support will not provide support for software provided by Aiptek's suppliers that was included with the HARDWARE PRODUCT, nor will Aiptek Technical Support provide assistance and/or training in use of the software provided by Aiptek's suppliers.

Any attempt by the end user to disassemble any part of the HARDWARE PRODUCT, decompile any part of the software included with the HARDWARE PRODUCT, or damage any piece of the HARDWARE PRODUCT (including but not limited to accidental damage, incidental damage, purposeful damage, or damage caused by a person other than the End-User), shall immediately and irrevocably void the Limited Warranty. Aiptek shall then be released from honoring any and all parts of this Limited Warranty, and the End-User will be ineligible for both the Warranty Service, and will also be ineligible for receiving Technical Support.

The Limited Warranty cannot be transferred to another individual from the original purchaser, except as provided in the END-USER LICENSE AGREEMENT. If the HARDWARE PRODUCT is sold to another user by the original End-User, the Limited Warranty will be null and void, and Aiptek will have no obligation to provide the Warranty Service. If the HARDWARE PRODUCT is a gift from the original purchaser to another person, then the Limited Warranty can be transferred to the recipient of the HARDWARE PRODUCT, provided the original purchaser does not attempt to open the box which the HARDWARE PRODUCT was packaged in.

If this HARDWARE PRODUCT is purchased from an unauthorized reseller, the Limited Warranty will be null and void, and Aiptek will have no obligation to provide the Warranty Service. See the "List of Authorized Resellers" in the manual to determine whether or not you purchased the HARDWARE PRODUCT from an Authorized Reseller.

Only the End-User who has registered the product and/or who has kept a copy of the original receipt may receive the Warranty Service, which is subject to the rules as described in both the End-User License Agreement and this Statement of Limited Warranty. No other representatives of the End-User's household, and no other representatives of the single entity that purchased the HARDWARE PRODUCT (other than the End-User in whose name it is registered) can receive or ask for the Warranty Service.

If the Warranty Service is activated, and Aiptek has decided to send out replacement parts for the HARDWARE PRODUCT before receiving the defective pieces from the End-User, the End-User must send the defective hardware to Aiptek within 10 days of receiving the authorization to return the defective part(s) of the HARDWARE PRODUCT. If the defective parts are not received within 10 days of the End-User being given authorization to return the defective part(s) of the HARDWARE PRODUCT, then the

Limited Warranty for the End-User's **HARDWARE PRODUCT** shall immediately and irrevocably be voided. Aiptek shall then be released from honoring any and all parts of this Limited Warranty, and the End-User will be ineligible for both the Warranty Service, and will also be ineligible for receiving Technical Support.

If the End-User who receives authorization to return defective hardware returns parts that were not authorized to be returned by Aiptek, the unauthorized parts will not be replaced, and will be returned to the End-User. Only parts that are authorized by Aiptek to be returned will be repaired and/or replaced.

Aiptek reserves the right to amend, change, and update this Statement of Limited Warranty at any time without notice. The End-User agrees to abide by all amendments, changes, and updates made to this Statement of Limited Warranty.

TO THE MAXIMUM EXTENT PERMITTED BY APPLICABLE LAW, AIPTTEK AND ITS SUPPLIERS DISCLAIM ALL OTHER WARRANTIES AND CONDITIONS, INCLUDING, BUT NOT LIMITED TO, EXPRESSED OR IMPLIED WARRANTIES, WARRANTIES OF MERCHANTABILITY, FITNESS FOR A PARTICULAR PURPOSE, TITLE, AND NON-INFRINGEMENT, WITH REGARD TO THE **HARDWARE PRODUCT**, AND THE PROVISION OF OR FAILURE TO PROVIDE TECHNICAL SUPPORT. THIS LIMITED WARRANTY GIVES YOU SPECIFIC LEGAL RIGHTS. YOU MAY HAVE OTHERS, WHICH VARY FROM STATE/JURISDICTION TO STATE/JURISDICTION.

How to obtain the Warranty Service

If you believe that you have a defective **HARDWARE PRODUCT**, call Aiptek Tech Support. They will troubleshoot your **HARDWARE PRODUCT** to find out if it any piece of the hardware is defective. If it is, and your **HARDWARE PRODUCT** is still covered under the Limited Warranty, it will be repaired or replaced free of charge. You must be registered with Aiptek in order to obtain the Warranty Service. If you have not registered, you will be required to register the **HARDWARE PRODUCT** with Aiptek and provide proof of purchase. If you need to contact Aiptek because you believe your **HARDWARE PRODUCT** is defective, you can contact the appropriate office which your country is assigned to below: For those who live in the United States, its territories, & its Commonwealths, Canada, & all countries located in Central & South America, including the Falkland Islands, and all United States citizens living overseas (including U.S. Government & U.S. Military employees), please contact the office below:

Aiptek, Inc.
20492 Crescent Bay Dr., Suite 104
Lake Forest, CA 92630
Tel: 949.455.1800
Fax: 949.455.1887
<http://www.aiptek.com>
Hours: 8 a.m. to 5 p.m. Pacific Time
Open Monday through Friday

If where you live does not fit any of the categories above, please contact the office below:

Aiptek Int'l., Inc.
No. 5-1 Innovation Road I
Science-Based Industrial Park
Hsin-Chu 300
Taiwan, R.O.C.
Tel: 886.3.5678.138
Fax: 886.3.5678.569
<http://www.aiptek.com.tw>
Hours: 8 a.m. to 5 p.m. (GMT plus 8 hours)
Open Monday through Friday

For the most updated version of the Limited Warranty, please visit our webpage at <http://www.aiptek.com>. For the list of Authorized Resellers, please visit our webpage at <http://www.aiptek.com>. For End-Users who have to contact Aiptek Int'l., Inc. to find their list of Authorized Resellers, please visit their webpage at <http://www.aiptek.com.tw>, or contact their offices.

STATEMENT OF LIMITED WARRANTY

Aiptek, Inc. ("Aiptek") warrants the enclosed device ("HARDWARE PRODUCT") for a period of six months from the date of purchase to be free from physical, operational, and workmanship defects. Aiptek also warrants that the HARDWARE PRODUCT will perform in accordance with the accompanying written materials during the period that the Limited Warranty is active. Technical Support provided by Aiptek shall be available as described in applicable written materials provided to you by Aiptek during the period that the Limited Warranty is active. Aiptek Technical Support Representatives will make commercially reasonable efforts to solve any problems that may arise from the installation and/or use of the HARDWARE PRODUCT. Some states and jurisdictions do not allow limitations on duration of an implied warranty, so the above limitation may not apply to you. To the extent allowed by applicable law, implied warranties on the HARDWARE PRODUCT, if any, are limited to thirty (30) days.

Aiptek reserves the right to repair and/or replace defective HARDWARE PRODUCTS, including the repair and/or replacement of individual defective components of the HARDWARE PRODUCT, and the repair and/or replacement of defective disks that contain software from Aiptek's suppliers, at its discretion. Aiptek is the sole entity that will determine whether or not the HARDWARE PRODUCT, or an individual piece or components of the HARDWARE PRODUCT, is/are defective. Aiptek also reserves the sole right to decide whether or not the HARDWARE PRODUCT, or piece(s) of the HARDWARE PRODUCT will be repaired or replaced. This Limited Warranty only covers all components of the HARDWARE PRODUCT enclosed herein that have been designed and/or built by Aiptek, Inc., or Aiptek Int'l, Inc. Aiptek does not guarantee any and all components of this HARDWARE PRODUCT that were not designed, programmed, and/or built by Aiptek, Inc. itself, or by Aiptek Int'l, Inc.

Aiptek Technical Support is limited to helping the End-User with installation of the HARDWARE PRODUCT only. Aiptek Technical Support will not provide support for software provided by Aiptek's suppliers that was included with the HARDWARE PRODUCT, nor will Aiptek Technical Support provide assistance and/or training in use of the software provided by Aiptek's suppliers.

Any attempt by the end user to disassemble any part of the HARDWARE PRODUCT, decompile any part of the software included with the HARDWARE PRODUCT, or damage any piece of the HARDWARE PRODUCT (including but not limited to accidental damage, incidental damage, purposeful damage, or damage caused by a person other than the End-User), shall immediately and irrevocably void the Limited Warranty. Aiptek shall then be released from honoring any and all parts of this Limited Warranty, and the End-User will be ineligible for both the Warranty Service, and will also be ineligible for receiving Technical Support.

The Limited Warranty cannot be transferred to another individual from the original purchaser, except as provided in the END-USER LICENSE AGREEMENT. If the HARDWARE PRODUCT is sold to another user by the original End-User, the Limited Warranty will be null and void, and Aiptek will have no obligation to provide the Warranty Service. If the HARDWARE PRODUCT is a gift from the original purchaser to another person, then the Limited Warranty can be transferred to the recipient of the HARDWARE PRODUCT, provided the original purchaser does not attempt to open the box which the HARDWARE PRODUCT was packaged in.

If this HARDWARE PRODUCT is purchased from an unauthorized reseller, the Limited Warranty will be null and void, and Aiptek will have no obligation to provide the Warranty Service. See the "List of Authorized Resellers" in the manual to determine whether or not you purchased the HARDWARE PRODUCT from an Authorized Reseller.

Only the End-User who has registered the product and/or who has kept a copy of the original receipt may receive the Warranty Service, which is subject to the rules as described in both the End-User License Agreement and this Statement of Limited Warranty. No other representatives of the End-User's household, and no other representatives of the single entity that purchased the HARDWARE PRODUCT (other than the End-User in whose name it is registered) can receive or ask for the Warranty Service.

If the Warranty Service is activated, and Aiptek has decided to send out replacement parts for the HARDWARE PRODUCT before receiving the defective pieces from the End-User, the End-User must send the defective hardware to Aiptek within 10 days of receiving the authorization to return the defective part(s) of the HARDWARE PRODUCT. If the defective parts are not received within 10 days of the End-User being given authorization to return the defective part(s) of the HARDWARE PRODUCT, then the Limited Warranty for the End-User's HARDWARE PRODUCT shall immediately and irrevocably be voided. Aiptek shall then be released from honoring any and all parts of this Limited Warranty, and the End-User will be ineligible for both the Warranty Service, and will also be ineligible for receiving Technical Support.

If the End-User who receives authorization to return defective hardware returns parts that were not authorized to be returned by Aiptek, the unauthorized parts will not be replaced, and will be returned to the End-User. Only parts that are authorized by Aiptek to be returned will be repaired and/or replaced.

Aiptek reserves the right to amend, change, and update this Statement of Limited Warranty at any time without notice. The End-User agrees to abide by all amendments, changes, and updates made to this Statement of Limited Warranty.

TO THE MAXIMUM EXTENT PERMITTED BY APPLICABLE LAW, AIPTTEK AND ITS SUPPLIERS DISCLAIM ALL OTHER WARRANTIES AND CONDITIONS, INCLUDING, BUT NOT LIMITED TO, EXPRESSED OR IMPLIED WARRANTIES, WARRANTIES OF MERCHANTABILITY, FITNESS FOR A PARTICULAR PURPOSE, TITLE, AND NON-INFRINGEMENT, WITH REGARD TO THE HARDWARE PRODUCT, AND THE PROVISION OF OR FAILURE TO PROVIDE TECHNICAL SUPPORT. THIS LIMITED WARRANTY GIVES YOU SPECIFIC LEGAL RIGHTS. YOU MAY HAVE OTHERS, WHICH VARY FROM STATE/JURISDICTION TO STATE/JURISDICTION.

How to obtain the Warranty Service

If you believe that you have a defective HARDWARE PRODUCT, call Aiptek Tech Support. They will troubleshoot your HARDWARE PRODUCT to find out if any piece of the hardware is defective. If it is, and your HARDWARE PRODUCT is still covered under the Limited Warranty, it will be repaired or replaced free of charge. You must be registered with Aiptek in order to obtain the Warranty Service. If you have not registered, you will be required to register the HARDWARE PRODUCT with Aiptek and provide proof of purchase. If you need to contact Aiptek because you believe your HARDWARE PRODUCT is defective, you can contact the appropriate office which your country is assigned to below: For those who live in the United States, its territories, & its Commonwealths, Canada, & all countries located in Central & South America, including the Falkland Islands, and all United States citizens living overseas (including U.S. Government & U.S. Military employees), please contact the office below:

Aiptek, Inc.
20492 Crescent Bay Dr., Suite 104
Lake Forest, CA 92630
Tel: 949.455.1800
Fax: 949.455.1887
<http://www.aiptek.com>
Hours: 8 a.m. to 5 p.m. Pacific Time
Open Monday through Friday

If where you live does not fit any of the categories above, please contact the office below:

Aiptek Int'l., Inc.
No. 5-1 Innovation Road I
Science-Based Industrial Park
Hsin-Chu 300
Taiwan, R.O.C.
Tel: 886.3.5678.138

Fax: 886.3.5678.569

<http://www.aiptek.com.tw>

Hours: 8 a.m. to 5 p.m. (GMT plus 8 hours)

Open Monday through Friday

For the most updated version of the Limited Warranty, please visit our webpage at <http://www.aiptek.com>.
For the list of Authorized Resellers, please visit our webpage at <http://www.aiptek.com>. For End-Users
who have to contact Aiptek Int'l., Inc. to find their list of Authorized Resellers, please visit their webpage
at <http://www.aiptek.com.tw>, or contact their offices.

End-User License Agreement for the Aiptek Start Writer PC tablet

Important - Read Carefully!

This Aiptek End-User License Agreement ("EULA") is a legal agreement between you (either an individual or a single entity) and Aiptek, Inc. for the Aiptek hardware product identified above. This includes the computer hardware, software, associated media, printed materials, and "online" or electronic documentation ("HARDWARE PRODUCT"). **By attempting to install, successfully installing, copying, or otherwise using this HARDWARE PRODUCT, you agree to be bound by the terms of this EULA.** If you do not agree to the terms of this EULA, do not attempt to install or use the HARDWARE PRODUCT, and we recommend that you return it to the place where you purchased it from.

HARDWARE PRODUCT LICENSE

The HARDWARE PRODUCT is protected by copyright laws and international copyright treaties, as well as other intellectual property laws and treaties. The HARDWARE PRODUCT is licensed, not sold.

1. GRANT OF LICENSE. This EULA grants you the following rights:

- **Hardware** – You may install the HARDWARE PRODUCT on one single computer. If you have more than one computer that you would like to install the HARDWARE PRODUCT on, you may install the HARDWARE PRODUCT onto that other computer, provided that you are the only person that will use the HARDWARE PRODUCT on each computer system.
- **Software** – You may install the additional software included with this HARDWARE PRODUCT on one single computer, provided that you agree to the individual EULAs for each software program. If you have more than one computer that you would like to install the additional software that came with the HARDWARE PRODUCT on, you may install the additional software onto that other computer, provided that you are the only person that will use the additional software on each computer system.
- **Copies** – You may make one copy of each disk and CD included with the HARDWARE PRODUCT for backup purposes only, provided that you do not lease, lend, rent, or otherwise allow others to have possession of the copies.

2. OTHER RIGHTS AND LIMITATIONS

- **Single Entity User** – Only the person that the HARDWARE PRODUCT was purchased for may use the HARDWARE PRODUCT and its accompanying software.
- **Individual User** – Only you and those in your immediate household may use the HARDWARE PRODUCT and its accompanying software.
- **Product Transfer** – You may permanently transfer all of the HARDWARE PRODUCT under this EULA, provided you retain no copies of any of the software included in this HARDWARE PRODUCT. To do this, you must transfer all of the HARDWARE PRODUCT (including all component parts, the media and printed materials, any upgrades, this EULA, all software, and all disks), to the recipient. The recipient must also agree to the terms of this EULA. The Limited Warranty will also be null and void, and Aiptek shall then be released from honoring any and all parts of the Limited Warranty. If the intended recipient does not agree to the terms of the EULA, then the HARDWARE PRODUCT cannot be transferred. This product transfer will have occurred if the End-User purchases the HARDWARE PRODUCT from an unauthorized reseller.
- **Gifts** – If this HARDWARE PRODUCT was purchased for someone as a gift, the person purchasing the HARDWARE PRODUCT may give it to the intended recipient without voiding the Warranty, provided that the person purchasing the HARDWARE PRODUCT does not attempt to open the package, attempt to install the HARDWARE PRODUCT, or otherwise use the HARDWARE PRODUCT.

- **Decompilation, Disassembly, and Reverse Engineering** – You may not decompile, disassemble, or reverse engineer any and all parts of the **HARDWARE PRODUCT**, except and only to the extent that such activity is expressly permitted by applicable law notwithstanding this limitation.
- **Separation of Components** – The **HARDWARE PRODUCT** is licensed as a single product. Its component parts and software may not be separated for use on more than one computer.
- **Rental** – You may not lease, lend, or rent any and all parts of the **HARDWARE PRODUCT**, including any and all backup copies made.
- **Refunds** – If for any reason you wish to return the **HARDWARE PRODUCT**, you can seek a refund from the place of purchase. If you cannot get a refund from the place of purchase, you may not seek a refund for the **HARDWARE PRODUCT** from Aiptek, and you agree to not attempt to seek a refund for the **HARDWARE PRODUCT** from Aiptek.
- **Technical Support** – Aiptek may provide you with Technical Support ("Tech Support") related to the **HARDWARE PRODUCT**. Use of Tech Support, which includes the Warranty Service, is governed by the Aiptek policies and programs described in the user manual, in "online" documentation, and/or in other Aiptek-provided materials, including this EULA. Any supplemental software code or pieces of hardware provided to you as part of Tech Support shall be considered part of the **HARDWARE PRODUCT** and subject to the terms and conditions of this EULA. With respect to information you provide to Aiptek as part of the Tech Support, Aiptek may use such information for its business purposes, including but not limited to product support and development. Aiptek will not utilize such information in a form that personally identifies you. Aiptek shall also not be responsible for any telephone charges that may occur in contacting Tech Support, and Aiptek shall not reimburse the End-User for any telephone charges that may occur while contacting Tech Support.
- **Registration** – You agree to register the **HARDWARE PRODUCT** with Aiptek within 60 days of purchase of the **HARDWARE PRODUCT**. As part of this agreement, you agree to provide Aiptek with all requested information. All information provided must be accurate and true.
- **Termination** – Without prejudice to any other rights, Aiptek may terminate this EULA if you fail to comply with the terms and conditions of this EULA. In such event, you must destroy all copies of the **HARDWARE PRODUCT** and all of its component parts.
- **Changes to the EULA** – Aiptek reserves the right to amend, change, and update this EULA at any time, and without notice. The user agrees to abide by such amendments, changes, and updates, should any be made.

3. **COPYRIGHT** – All title and copyrights in and to the **HARDWARE PRODUCT** (including but not limited to any images, photographs, animations, video, audio, music, text, and "applets" incorporated into the **HARDWARE PRODUCT**), the accompanying printed materials, all "online" documentation, any copies of the software included with the **HARDWARE PRODUCT**, all pieces of physical hardware, all media, and/or other Aiptek-provided materials, are owned by Aiptek or its suppliers. The **HARDWARE PRODUCT** is protected by copyright laws and international treaty provisions; Therefore, you must treat the **HARDWARE PRODUCT** like any other copyrighted material except that you may install the **HARDWARE PRODUCT** only as described in this EULA. You may not copy the printed materials accompanying the **HARDWARE PRODUCT**.

4. **Other Mediums of Acquisition** – You may receive the **HARDWARE PRODUCT** in more than one medium. Regardless of the type or size of medium you receive, you may use only one medium that is appropriate for your single computer. You may not use or install the other medium on another computer. You may not rent, lease, loan, or otherwise transfer the other medium to another user, except as part of the permanent transfer (as described in Section 2 of this EULA) of the **HARDWARE PRODUCT**.

5. **Software Upgrades** – Aiptek may occasionally provide upgrades to the driver program that makes the **HARDWARE PRODUCT** function. You are eligible to receive these upgrades provided that you register the **HARDWARE PRODUCT** with Aiptek. Rules for registering the **HARDWARE PRODUCT** with Aiptek are governed by the Aiptek policies and programs described in the user manual, in "online" documentation, and/or in other Aiptek-provided materials, including this EULA (see Section 2 of this EULA for more information).

6. U.S. GOVERNMENT RESTRICTED RIGHTS - The HARDWARE PRODUCT and documentation are provided with RESTRICTED RIGHTS. Use, duplication, or disclosure by the Government is subject to restrictions as set forth in subparagraph (c)(1)(ii) of the Rights in Technical Data and Computer Software clause at DFARS 252.227-7013 or subparagraphs (c)(1) and (2) of the Commercial Computer Software-Restricted Rights at 48 CFR 52.227-19, as applicable. Manufacturer is Aiptek, Inc./20492 Crescent Bay Drive, Suite 104/Lake Forest, CA 92630-0001.

7. If you acquired this product in the United States, this EULA is governed by the laws of the State of California.

8. If this product was acquired outside the United States or its Territories, then local law may apply. If you live in Canada, any other nations in Central & South America, including the Falkland Islands, or the United States, its Territories, and its Commonwealths, and you have questions regarding this EULA, please contact Aiptek at this address: Aiptek, Inc./20492 Crescent Bay Drive, Suite 104/Lake Forest, CA 92630-0001/USA. If you live in any nation that is not located in the areas as listed above, please contact Aiptek Int'l. Inc. at this address: Aiptek Int'l. Inc./No. 5-1 Innovation Road I/Science-Based Industrial Park/Hsin-Chu 300/Taiwan, R.O.C.

TO THE MAXIMUM EXTENT PERMITTED BY APPLICABLE LAW, IN NO EVENT SHALL AIPTTEK OR ITS SUPPLIERS BE LIABLE FOR ANY SPECIAL, INCIDENTAL, INDIRECT, OR CONSEQUENTIAL DAMAGES WHATSOEVER (INCLUDING, WITHOUT LIMITATION, DAMAGES FOR LOSS OF BUSINESS PROFITS, BUSINESS INTERRUPTION, LOSS OF BUSINESS INFORMATION, DAMAGE TO COMPUTER SOFTWARE OR HARDWARE, OR ANY OTHER PECUNIARY LOSS) ARISING OUT OF THE USE OF, INABILITY TO USE THE SOFTWARE PRODUCT OR THE PROVISION OF, FAILURE TO PROVIDE SUPPORT SERVICES, OR INABILITY TO INSTALL THE HARDWARE PRODUCT, EVEN IF AIPTTEK HAS BEEN ADVISED OF THE POSSIBILITY OF SUCH DAMAGES. IN ANY CASE, AIPTTEK IS RELEASED FROM ALL LIABILITY. BECAUSE SOME STATES AND JURISDICTIONS DO NOT ALLOW THE EXCLUSION OR LIMITATION OF LIABILITY, THE ABOVE LIMITATION MAY NOT APPLY TO YOU.

For information on the Limited Warranty, please see the "Statement of Limited Warranty".

For the most updated version of the End-User License Agreement, please visit our webpage at <http://www.aiptek.com>.

For the list of Authorized Resellers, please visit our webpage at <http://www.aiptek.com>.