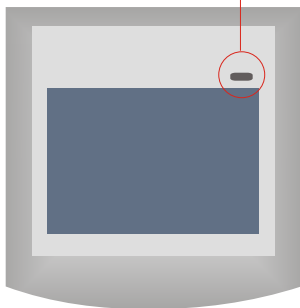




(For Wireless/)

Unpair Button



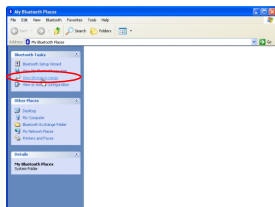
Keep pressing the unpair button for at least 4 seconds and the tablet will be disconnected.



- 1** Double click the *My Bluetooth Places* on your desktop.



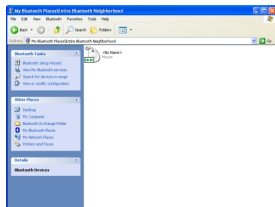
- 2** Click *View devices in range*.
Now your computer is searching for all the Bluetooth devices in range. Please wait.



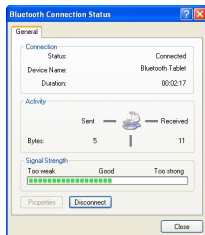
- 3** Your computer has found the Bluetooth Tablet when icon appears.

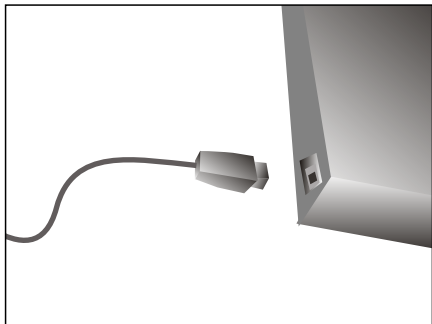


This icon indicates that the Bluetooth Tablet is connected to PC.



- 4** Click *Disconnect*. Now you can safely disconnect your Bluetooth Tablet.

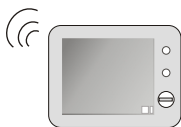


**(For Wired)**

Unplug the USB cable and the tablet will be disconnected.

5

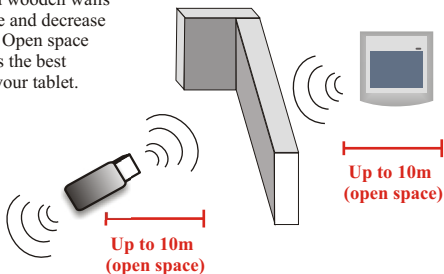
Environment



Environment always influences the receiving quality of your tablet. The best environment for tablet is where no other cordless products are functioning, such as microwave ovens and dish dryers.

Cement walls and wooden walls absorb radio wave and decrease receiving quality. Open space without barriers is the best environment for your tablet.

Cement Wall



6

Maintenance



1. Do not drop, puncture or disassemble the tablet.
2. Remove batteries during long periods between use.
3. Avoid all contact with water and dry hands before using.
4. Do not expose the tablet to high temperature or leave it in direct sunlight.
5. Avoid pressing hard on the tablet body.

7

Troubleshooting

What is the Bluetooth Adapter software that I am installing?

Many Bluetooth Adaptors use the Bluetooth Adapter software to work with the adaptor and connect with other Bluetooth devices.

When I search for my tablet, many devices appear that I do not recognize.

Because Bluetooth has a range of up to 100 metres, you will detect devices beyond the tablet that you are searching for.

My tablet connection drops out when I use my cordless phone.

Bluetooth uses the 2.4Ghz unlicensed ISM band, which is the same as some high end cordless phones, video transmitters, and some other wireless devices. Even though Bluetooth uses frequency hopping to prevent interference with these devices, at times it may interfere.

My computer does not detect the USB Bluetooth Adaptor.

Please check the power status of your battery or try again. You may need to get a technician to make sure your USB port drivers are installed correctly.

The light on my tablet does not light up.

You may have accidentally pressed the unpair button located just above the right hand corner of the active area of your tablet. If so, switch the tablet off for three seconds, and on again. Have your tablet within 2 meters. Your tablet should light up and be usable.

My tablet still does not light up, when I switch it on.

You will need to replace the batteries of the tablet. It requires 2 AA batteries.

My tablet lights up, but my pen does not respond.

Check that you have the correct pen that was bundled with your unit, tap your pen gently on the tablet. The pen should respond now.

My pen still does not respond.

You will need to repair the devices, please see the pairing section.

There is a longer than usually delay with my tablet.

You will need to move closer to your computer and try replacing the batteries. Or you may check whether your PC is stable.

I have lost my nib (the tip of my pen)

Your pen is supplied with two spare nibs, which you can use to replace the tip.

The pressure sensitivity does not seem to work in my application.

Check that your application supports pressure sensitivity and also that it is enabled in the application that you are using.

8

Specification

Tablet

Product Dimension: 201*176*58

Working Area: 152*114

Resolution: 500 Lines per inch (LPI)

Maximum Position: X:3000, Y:2250

Macro Key: None

Accuracy: +/- 2 mm

Product Weight: 444g

Data Interface: USB, Bluetooth

Unmarry Switch: Continually push 3 seconds

Battery: AA rechargeable battery*2

Power Consumption in Bluetooth Mode:

- Pen in proximity: 150mA, 3V/ 195mA, 2.4V

- Pen out of proximity: 110mA, 3V/150mA, 2.4V

Power Consumption in USB Mode: 25mA, 5V(pen in proximity)

Bluetooth Module

Bluetooth Module: Fully compliant with Bluetooth v1.1

Module type: Bluetooth v1.1 class B

Module Chip: Microtune

Module Interface: Serial Port Interface (SPI)

Module Clock: 1.5MHz clock

Operating Voltage: 3V DC +/- 5%

Operating Temperature: 32 °F to 112 °F (0 °C to 45 °C)

Storage Temperature: -4 °F to 131°F (-10 °C to 55 °C)

Operating Humidity: 0 to 70 % (non-condensing)

Storage Humidity: 0 to 90 % (non-condensing)

Link Coverage: Up to 15 meters (Open Space)

Pen

Pen Battery: AAA battery*1

Proximity: 8 mm(minimum)

Product Optional Accessory

USB Cable: Mini USB 4 pins connector cable

CD: Include Tablet driver, FreeNotes, OfficeInk

Battery: 2* rechargeable battery (GP 1800)

Battery Charger: BATTERY CHARGER, GPKB01UL, GP

Bluetooth Adapter: Bluetooth v1.1 (Microchip Chip)

