










USB Tablet provides a testing function for you to find out the best settings for your pen.

3 **For wireless tablet** - Make sure that you have completed all the previous steps in *Chapter 1* and *Chapter 2*.

**For wired tablet** - Make sure that you have connected your tablet To PC via a USB cable and have installed the battery of the pen.

- 1** If your tablet is enabled as a Bluetooth Tablet,  will appear in Windows System tray. While your tablet is enabled as a wired tablet,  will appear in Windows System tray.

 **Note:** If you cannot find  and , click **Start** menu and then click **Run** and enter **atwtusb**. Click **OK** and  or  will show up.



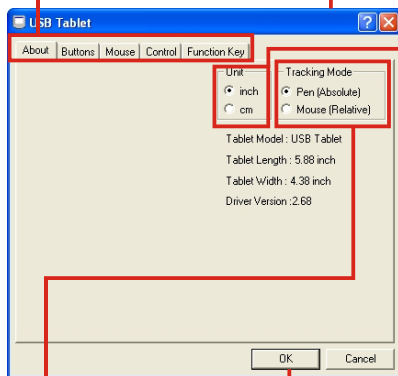
- 2** Left-click  or  icon and the USB Tablet Window will pop up.

1

## About

Click category tabs

USB Tablet Window



Change the length unit of tablet size in inch/cm.

Tracking Mode

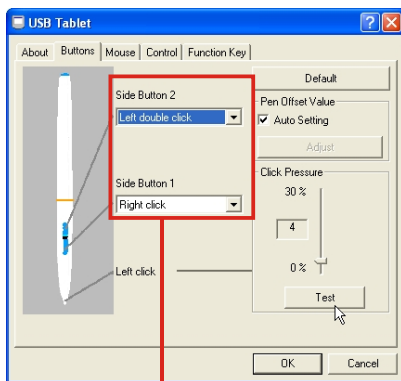
Click OK to save changes.

- **Pen [Absolute mode]** - the area of the tablet corresponds to the whole area of the screen. For example, if place your wireless pen in the top right hand corner, the mouse pointer will always be at the top right of the screen.
- **Mouse [Relative mode]** - acts like a mouse, moves in relation to where the mouse pointer currently is. For example, place your wireless pen anywhere on the tablet. If you move up, the mouse pointer will follow, regardless of where you start on the tablet.

## 2

## Buttons

There are two buttons on the wireless pen. Both of them can correspond to mouse click.



Pull-down menu of Side Buttons of your wireless pen

Click the Side Buttons menu and choose one function for each Side Button.

### Default

**Side Button 1 = Right click**

**Side Button 2 = Left double click**

### Pull-down menu

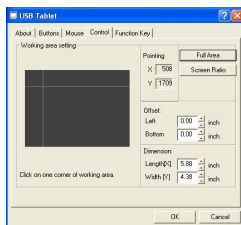
- None
- Left click
- Left double click
- Right click
- Right double click
- Middle click
- Middle double click
- ScrollBar Move Up/Down
- ScrollBar Move

## 3

## Control

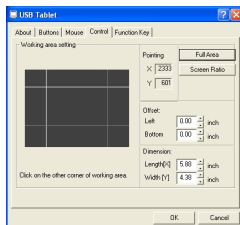
The control tab allows configuration of the active working area of the tablet to a smaller area.

1



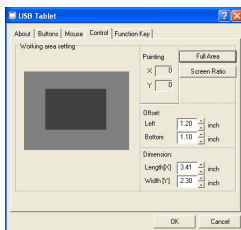
1. The Full Area button allows the entire area of the tablet to be used. (Default setting)

2



2. To select a smaller active area, use the wireless pen and on the tablet click on the upper left corner of the area you wish to select, then move your wireless pen to the lower right of the area you wish to select and click.

3



3. When selected you will see the active area in black, and inactive in grey. The black area in the Working Area Setting corresponds to the same area on your tablet.

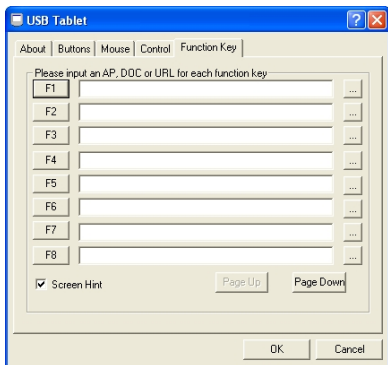
The active area can now be adjusted in two ways.

The Offset moves the selected active area.

The Dimensions allows you to adjust the size of the selected active area more precisely.

## 4

## Function Key



The function key tab allows you to view or change existing shortcuts.

To change a shortcut click on .. And search for the file you wish to link the function key to. You may also type the location.

Once a function key is linked, the next time you want to access that file or location, just click on the respective function key.

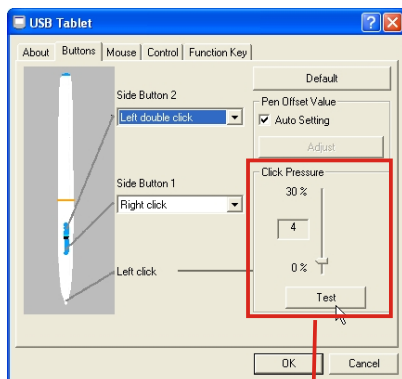
There are F1 - F12 to view or change F9 onwards, click Page Down.

**[!]** Note: To use a short cut, you move your pointer, use the wireless pen and point to the top of the active area.

And F1 to F12 will appear along the top of the screen.



# Adjusting Your Wireless Pen Sensitivity (For Wireless/Wired)



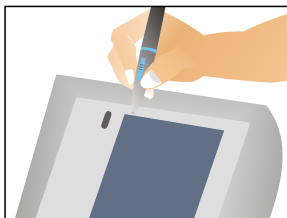
- 1 Click Test to pop up the *Click Pressure Test Window*.

The Click Pressure slider allows you to adjust the sensitivity of your pen as a percentage of the entire sensitivity.

The figure in the box ranges from 0-30, with 0 as the most sensitive and 30 as the least possible setting.

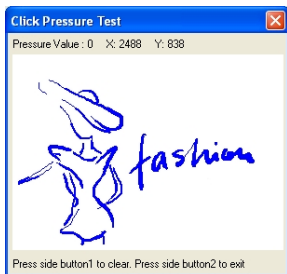
In practice, when you push your wireless pen gently on the tablet, the tablet detects a pressure starting from 0 (if you set 0). If you push harder the value increases (to 511).

If you adjust to a larger value, the tablet will not detect the pen being pushed down on, until the pressure reaches that figure.



Write or draw anything on your tablet.

## Click Pressure Test Window



The Window will display your writing or drawing. Feel the sensitivity of your pen and adjust *Click Pressure Slider* for your preference.

**!** Note: Your writing and drawing on *Click Pressure Test Window* cannot be saved.

# 4

---

## Disconnection

**Option1**    **Disconnection  
(For Wireless)**

**Option2**    **Disconnection  
(For Wireless)**

**Option3**    **Disconnection  
(For Wired)**