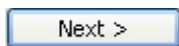


Note: If there are more than one computer that may connect to your computer, you will need to use a unique name.

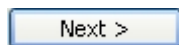
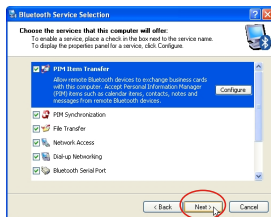
To continue, click *Next*.

- 4** The Initial Bluetooth Configuration Wizard window will now allow you to enable or disable Bluetooth Services. (Refer to the Bluetooth Services section for detailed information on services).

To continue, click *Next*.



- 5** The Bluetooth Services Selection window will allow you to disable/enable any services that you do not wish to offer.



Uncheck/ Check by clicking on the check boxes.

- ☒ Enabled Service
- ☐ Disabled Service

By default all services are enabled (all check boxes ticked)

[!] Note: You can choose to disable or enable services at anytime.

To continue and click *Next*

6 The Initial Bluetooth Configuration Wizard will allow you to choose whether to search and configure other Bluetooth devices.

[!] Note: You can configure connecting Bluetooth devices at anytime.

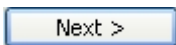
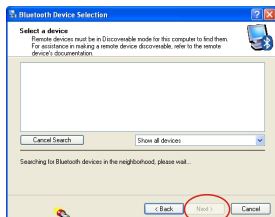
To search and configure device(s) click *Next*.

Or

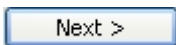
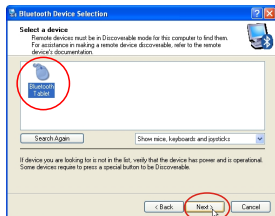
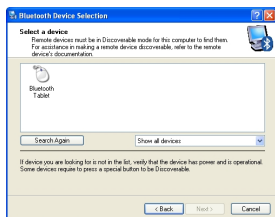
(Recommended) To continue, click *Skip*.



- 7** The Bluetooth Device Selection window will attempt to search for any Bluetooth devices in the area (area can be up to 10 metres).

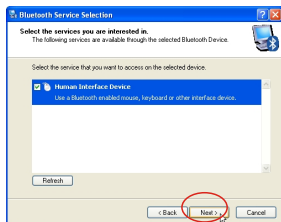


- 8** Bluetooth Adapter has found the Bluetooth Tablet. Click on the icon to select the Bluetooth Tablet and then click *Next*.



- 9 Click **Next**.

Next >



- 10 Click **Skip**.



- 11 Click **Finish**. Congratulations! You have completed initial Setup. Please restart your computer later.



- 12 Restart your computer. Click **Yes**.



Pairing Your Bluetooth Tablet

(For Wireless)

What is Pairing?

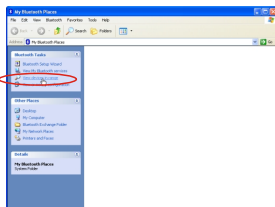
Pairing- Pairing allows two devices to be setup and will recognize each other whenever these two devices meet again. **You need to pair each time you wish to connect your tablet.**

[!] Note: Make sure that batteries have been installed and your Bluetooth Tablet is switched on before pairing. (See ***Bluetooth Tablet Hardware Installation***)

- 1 Double click the ***My Bluetooth Places*** on your desktop.



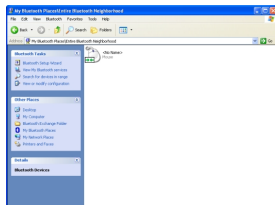
- 2 Click ***View devices in range.*** Now your computer is searching for all the Bluetooth devices in range. Please wait.



- 3 Your computer has found the Bluetooth Tablet when icon appears.

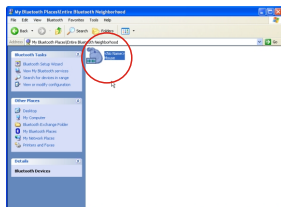


This icon indicates that the Bluetooth Tablet is connected to PC.



- 4** Double click the  icon. The **Bluetooth Connection Status Window** will appear.

! Note: As your Bluetooth Tablet is connecting to PC, you can go to Step 3 to test your tablet.



Bluetooth Connection Status Window

Bluetooth Connection Status

General

Connection

Status: Connected

Device Name: Bluetooth Tablet

Duration: 00:02:17

Activity

Sent — Received

Bytes: 5 11

Signal Strength

Too weak Good Too strong

Properties Disconnect

Close

Connected/Disconnected

Connected Device Name

Connected Time

Data Sent/Received

Connection Quality

See 5. Environment.

Disconnect/Connect

Close the Window

3

Configuration

Step1

**Customizing Your Tablet
(For Wireless/Wired)**

Step2

**Adjusting Your Wireless
Pen Sensitivity
(For Wireless/Wired)**