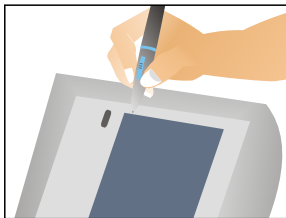
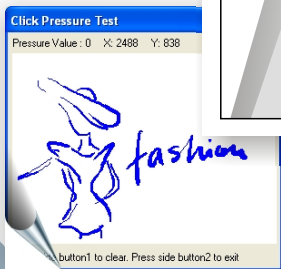




Bluetooth Tablet



FCC Caution

FCC Caution

The device complies with Part 15 of the FCC rules. Operation is subject to the following two conditions

- (1) This device may not cause harmful interference, and
 - (2) this device must accept any interference received, including interference that may cause undesired operation.
- FCC RF Radiation Exposure Statement: The equipment complies with FCC RF radiation exposure limits set for the for an uncontrolled environment.
 - This transmitter must not be co-located or operated in conjunction with any other antenna or transmitter.
 - Changes or modifications to this unit not expressly approved by the party responsible for compliance could void the user authority to operate the equipment.

Contents

Introduction	3
---------------------	----------

1. Installation

Step1	Bluetooth Adapter Driver Installation (For Wireless)	6
Step2	Bluetooth USB/ Tablet Manager Installation (For Wireless/ Wired)	10







2. Setup	11
-----------------	-----------

Step1	Initial Setup (For Wireless)	12
Step2	Pairing Your Bluetooth Tablet (For Wireless)	17

Contents

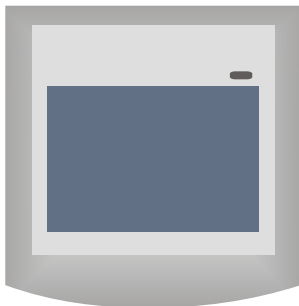
3. Configuration	19
Step1 Customizing Your Tablet (For Wireless/Wired)	20
Step2 Adjusting Your Wireless Pen Sensitivity (For Wireless/Wired)	25
4. Disconnection	27
Option1 Disconnection (For Wireless)	28
Option2 Disconnection (For Wireless)	29
Option3 Disconnection (For Wired)	30
5. Environment	31
6. Maintenance	32
7. Troubleshooting	33
8. Specification	35

Introduction

Thank you for purchasing Bluetooth Tablet. Your Bluetooth Tablet provides two modes of connection with PC: Wireless mode  and wired mode . Both modes provide pleasant and comfortable environment. Please notice that the setup procedure of wireless  and wired  mode are different, and these will be stressed through this manual.  icon represents wireless mode, while  icon represents wired mode.



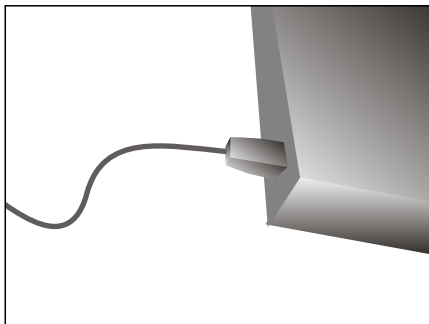
Wireless Mode



Introduction



Wired Mode



1

Installation

Step1

**Bluetooth Adapter Driver
Installation
(For Wireless)**

Step2

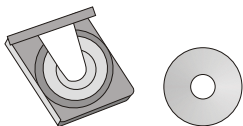
**Bluetooth USB/ Tablet
Manager Installation
(For Wireless/ Wired)**



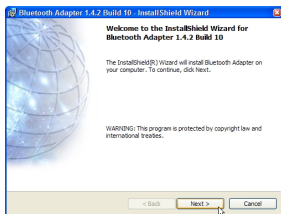
Bluetooth Adapter Driver Installation

(For Wireless)

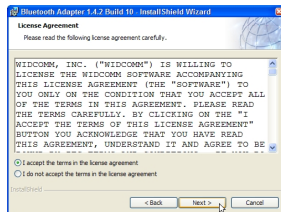
- 1** Insert the driver CD into CD/DVD drive, then the automatic installation will begin. Please click on "Bluetooth Adapter Driver" to continue installation.



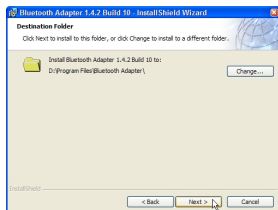
- 2** Click "Next".



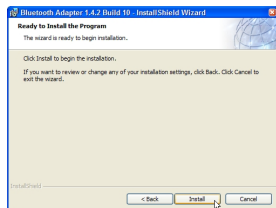
- 3** If you agree with the license terms, select "I accept the terms in the license agreement". Then click "Next".



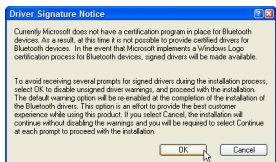
4 Click "Next".



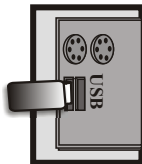
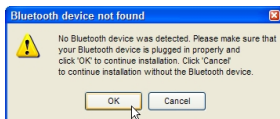
5 Click "Install".



6 When the "Driver Signature Notice" dialog box appears, click "OK" to continue.

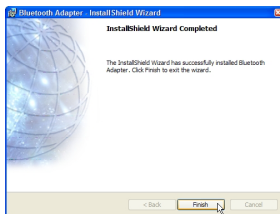


- 7** If your Bluetooth Adapter has not been plugged into a USB port, the following message will be shown. Insert a Bluetooth Adapter into a free USB port and click "OK" to continue. Windows should inform you that new hardware has been found.

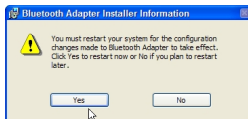


[!] *If Bluetooth Adapter is fully inserted to the USB port, the LED indicator of Bluetooth Adapter will light up in green.*

- 8** Click "Finish".






- 9** Click "Finish".



- 10** Congratulations! You have completed Bluetooth Adapter Driver installation. Bluetooth icons will appear on your desktop after installation.



Bluetooth Icon in the Windows System Tray Indicates Bluetooth Status

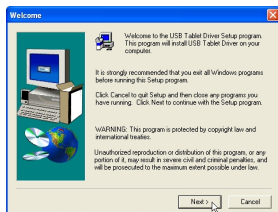
Enabled	Disabled	Connected
 Blue with White	 Blue with Red	 Blue with Green



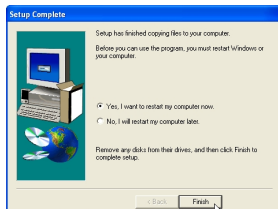
- 1** Click "Bluetooth/ USB Tablet Manager" to start installation.



- 2** Click "Next".



- 3** Click "Finish".



2

Setup

Step1

**Initial Setup
(For Wireless)**

Step2

**Pairing Your Bluetooth
Tablet
(For Wireless)**



- 1 Double click the *My Bluetooth Places* on your desktop.

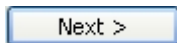


- 2 The Initial Bluetooth Configuration Wizard will appear.

The default options are recommended. You may uncheck them respectively if you do not wish the *My Bluetooth Places* icon to be placed.



To continue, click *Next*.



- 3 The General window will allow you to identify your Bluetooth enabled computer with a name.

Enter a unique Computer name.

There may be one given here, you may change it if you wish. Select the computer type. This will only affect the icon in which you will appear to another Bluetooth user.

