



Bluetooth USB Adapter

ELECTRONIC MANUAL

FCC Statement

This device complies with part 15 of the FCC rules. Operation is subject to the following two conditions. (1) This device may not cause harmful interference and (2) This device must accept any interference received, including interference that cause undesired operation.

You are cautioned that changes or modifications not expressly approved by the party responsible for compliance could void your authority to operate the equipment.

Bluetooth USB Adapter User Guide

Table of Content

Quick Installing Guide

Step 1. Installing Software

Step 2. Insert Bluetooth USB Adapter into a USB port

Step 3. Setup Tray Application

How to Use Bluetooth Service

1. Search for Other Bluetooth Device
2. Service Discovery
3. Bluetooth Service (Profile) Explanation
4. Pairing
5. Troubleshooting
6. Important Notices for WindowsXP OS

This Bluetooth USB Adapter User Guide is for quick guide of installing procedure and trouble shooting. If you want to understand complete functions of Bluetooth, please refer to Widcomm's BTW (Bluetooth for Windows) Guide on CD in the package (The file name is "BTW Users Guide.pdf", English version only).

Bluetooth is a registered trademark of Bluetooth SIG. All other products and product names mentioned herein are trademarks of their respective companies.

Quick Installing Guide

Step 1. Installing Software

1. Insert the CD into CD/DVD drive on your PC. The CD should start automatically and present you with an installation menu. (*If your OS are WindowsXP, please refer to item "Important Notices for WindowsXP OS" simultaneously)
2. Choose "Bluetooth Manager".

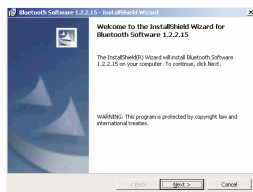


Figure 1

3. Click " Next ". (see figure 1)

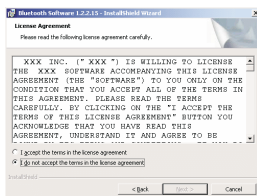


Figure 2

4. If you agree with the license terms, select " I accept the terms in the license agreement " and click " Next ". (see figure 2)

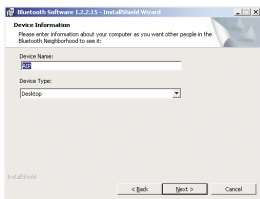


Figure 3

5. Ensure the device name and type are correct then click "Next " . (see figure 3)

6. click " Next "

7. click " Install "

8. click " Finish "

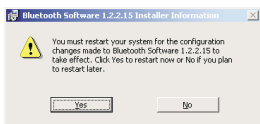


Figure 4

9. Click "Yes" to restart Windows. (see figure 4)

Step 2. Insert Bluetooth USB Adapter into USB Port

1. Insert Bluetooth USB Adapter into a free USB port after restarting Windows.

2. Windows should inform you that new hardware has been found and install the drivers automatically.

If you Insert Bluetooth USB Adapter correctly, you will see LED lighting, and it will flash when data has been transmitted.

Step 3. Setup Tray Application


After you have installed the software and have inserted the Blue tooth USB Adapter into a free USB Port, please check a new icon like  on the Windows system tray located in the bottom right hand corner of your Windows desktop. If you move the mouse onto the icon, you should see a popup message "Bluetooth Configuration". (see figure 5)



Figure 5

This is the Bluetooth System Tray icon. Rightclick on it, selectt "Setup" then you will see the following screen.(see figure 6)

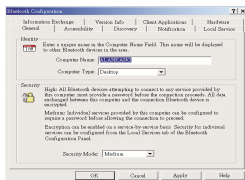


Figure 6

The "Computer Name" you see here should be the same as your computer name or the name you choose during the installation process. The computer type is either "Desktop" or "Laptop".

The security mode may be set to "High" or "Medium". Medium is the default setting. This means that anyone can connect to your system and use your services without having to type in a password. You can protect your individual services with a passkey and/or encryption by choosing High security mode.

To insure that your hardware is working properly, click on the Hardware tab. If the Device Status shows "NA" then your USB Adaptor has not been detected by the software. If the device is not plugged into USB port in your computer, please insert it again.

If Device Status in Device Properties is "The Device is working properly", press the "OK" button. Congratulation! You have completed the installation process. (see Figure 7)

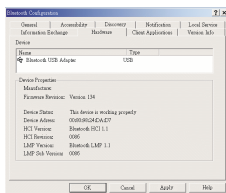


Figure 7

How to Use Bluetooth Service

1. Search for Other Bluetooth Device

After installation of the Bluetooth software you will have a new icon on your Windows desktop (see Figure 8).

Double-click on this icon to bring up "My Bluetooth Places" (see Figure 9).

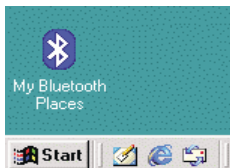


Figure 8

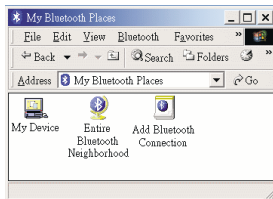


Figure 9

To discover nearby Bluetooth devices, click the "Entire Bluetooth Neighborhood" icon. It will try to discover other Bluetooth devices within radio range. If any devices are discovered they will be displayed in the Entire Bluetooth Neighborhood. The search may take a few minutes if there are many discoverable Bluetooth devices within range.

2. Service Discovery

Each Bluetooth device has services (profiles) you can access. To find out which services (profiles) a device supports, double click on that device. You will see all of the services listed, detailed explanations are on the next page.

We suggest you to read on-line help (press F1). You can find more of detail setting about the profiles in it.(see Figure 10).

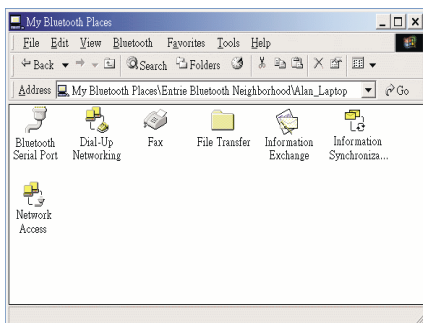


Figure 10

3. Bluetooth Services (Profiles) Explanation



Bluetooth Serial Port allows you to establish a Bluetooth wireless connection between two devices. The connection can emulate legacy RS232 serial cable link.



Dial-Up Networking allows a Bluetooth client to use a modem in another Bluetooth device to dial out and connect to internet.



Fax allows a Bluetooth client to wirelessly send a fax via another Bluetooth device which can dial to telephone network (ex: Bluetooth Mobile Phone).



File Transfer establishes a Bluetooth wireless connection that allows your computer to perform file system operations on another Bluetooth-enabled device. You can browse, drag/drop, open, print, cut/copy, paste, delete, rename, etc.



Information Exchange establishes a Bluetooth wireless connection between two devices so that they can transfer PIM (Personal Information Manager) data such as business cards, calendar items, email messages, and notes from one device to the other.



Information Synchronization establishes a Bluetooth wireless connection between two devices and uses the connection to synchronize PIM data between the two devices.



Network Access establishes a Bluetooth wireless connection between two devices. If another Bluetooth-enabled device has connected to internet, you can share its internet connection by using this service.

4. Pairing

Pairing allows you to avoid entering access information each time a connection is attempted. Paired devices share a unique Link Key, which they exchange when connecting.

The mate of a pair will always appear in My Bluetooth Places, even if the mate is not turned on or is out of connection range.

Paired devices remain paired even when:

- *One of the devices is powered off.
- * A service connection is interrupted or the service stopped.
- *One or both devices are rebooted.

When authentication is enabled, devices are paired the first time they attempt to connect after a successful passkey exchange.

To pair devices before attempting a connection:

1. Right-click the device you want to pair , and select "Pair Device" item. (See Figure 11)

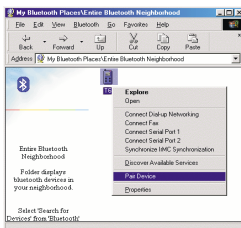


Figure 11

2. The system will require you to enter the Bluetooth Passkey for the device you want to pair. The Passkey of the two devices have to be the same. If the Passkey is correct, you will see the following icon, then the pairing process is successful.(See Figure 12 & 13)

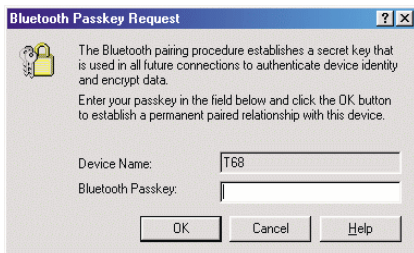


Figure 12

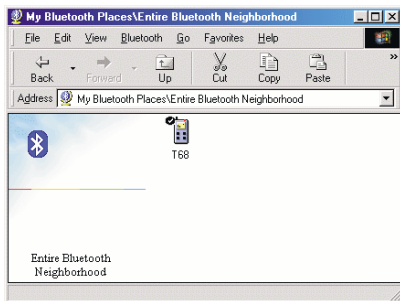


Figure 13

P.S. Paired device permits all services to connect without authorization.

5. Troubleshooting

1. Cannot connect to a paired device:

Paired devices are always displayed in My Bluetooth Places, even if the remote device is out of range or not powered up. Verify that the remote member of the pair is within radio range and powered up and then attempt the connection again.

2. Cannot discover services on an un-paired remote:

The remote device may not be powered up or may be out of range.

- Be sure to restart your computer after installing the software.

Verify that the remote device is powered up.

- Verify that the remote device is in the Connectable mode (Bluetooth Configuration Panel > Accessibility tab).
- Perform a Search for Devices to verify that the device is within range.

3. Dial-up networking service does not start:

The Dial-up Networking service will not start unless a properly configured modem is attached to the server.

- Verify that the modem is usable as a local device from the server.
- In the Bluetooth Configuration Panel, Local Services tab, double-click the "Dialup Networking" service.
- Click the down arrow in the Modem field and select the modem that will be used to dial out
- Click the "OK" button

4. How do I determine the Bluetooth device address (BDA) of my hardware device?

In the Bluetooth configuration panel, on the Hardware tab (see Figure 7) , in the devices section, select the device for which you want to determine the address of. In the device properties section of the dialog box, the fourth entry, device address, is the BDA of the selected Bluetooth device.

5. How do I determine the version number of the Bluetooth specification that the host controller interface (HCI) complies with?

In the Bluetooth Configuration Panel, on the Hardware tab (see Figure 7), in the Device Properties section, the fifth entry provides Bluetooth Specification compliance information for the Host Controller Interface.

The sixth entry contains the Specification Revision information for the Host Controller Interface, if appropriate.

6. How do I determine the version number of the Link Manager Protocol (LMP)?

In the Bluetooth Configuration Panel, on the Hardware tab (see Figure 7), in the Device Properties section, the seventh entry provides Link Manager Protocol version number information. The eighth entry contains the Link Manager Protocol (LMP) sub-version number information, if appropriate. BTW Configuration & User Guide Troubleshooting.

7. How do I find information about the Bluetooth hardware attached to my computer?

In the Bluetooth Configuration Panel, select the Hardware tab (see Figure 7).

8. How do I test a network access connection?

If the client is hardwired to the LAN, unplug the hardwired connection to ensure that the test checks the wireless connection rather than the hardwired connection. If the server has access to the Internet, open a browser on the client and connect to the World Wide Web.

9. Why do I get an unknown port message when I attempt to use a Bluetooth serial port?

The "unknown Port" error message usually means an attempt was made to connect a port that was in use. Additional Bluetooth Serial Ports can be added if they are required.

6. Important Notices for WindowsXP OS

1. In Installing Process, If your operating system are WindowsXP, you will see two screens like below (see figure 14, figure 15). Because Microsoft does not include Bluetooth function in MS-Windows Series operating system, there have some warning messages. Microsoft announces it will support Bluetooth devices in the new patch of WindowsXP. Now we suggest you to follow the next two steps. Please choose "OK" Button as the message like figure 14 was shown, and choose "Continue Anyway" Button as the message like figure 15 was shown.

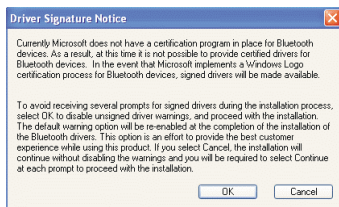


Figure 14



Figure 15

2. If your operating system are WindowsXP, when you double click "My Bluetooth Place" icon on your desktop, you will see the following screen. Although layout of the options are different from Windows 98/ME/2000, all the functions are the same. You can find "Bluetooth Tasks" in top left hand corner of the active window. The first option "Add Bluetooth Place" let you to make shortcut of services from other Bluetooth devices in right hand column (see figure 16, it is empty now). You can choose "View My Bluetooth services" option to see the Bluetooth services provided by the USB Adapter in the computer, or you can choose "View devices in range" option to discover nearby Bluetooth devices. You also can choose "View or modify configuration" option to setup Bluetooth configuration. If you choose the option, it will appear the screen similar to figure 6.

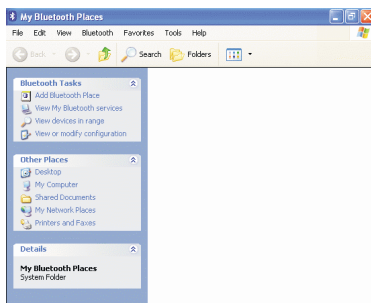


Figure 16