

User Manual

NETVOX TECHNOLOGY CO., LTD.

Add: No. 21-1 Sec. 1 Chung Hua West Road, Tainan, Taiwan

Tel: +886-6-2617641, 2654878

Fax: +886-6-2656120

<http://www.netvox.com.tw>

Copyright© Netvox Technology Co., Ltd.

CC2430 Programming instruction

CC2430 has a adjusting interface which allows program Flash inside .

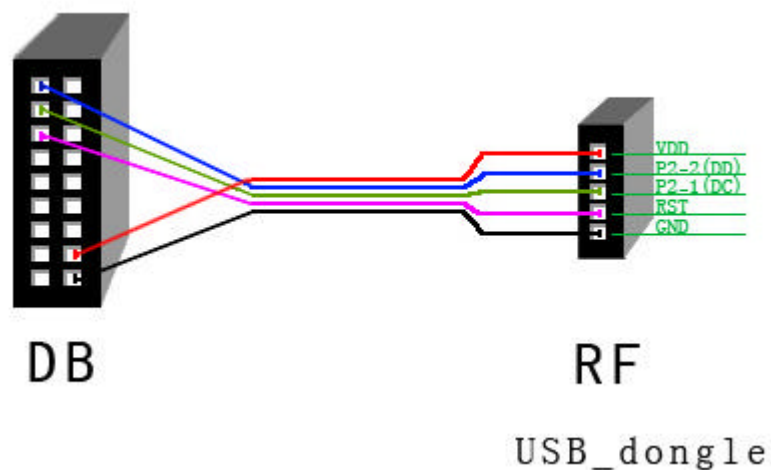
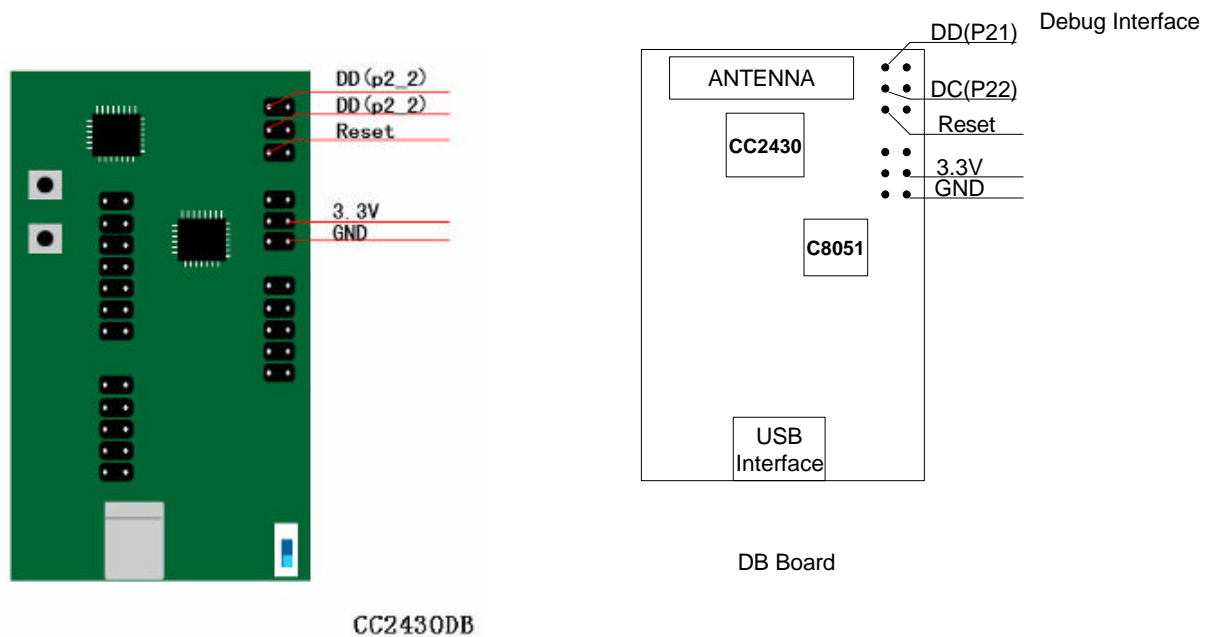
Adjust interface pin: P2_1 (Debug Data)

P2_2 (Debug Clock)

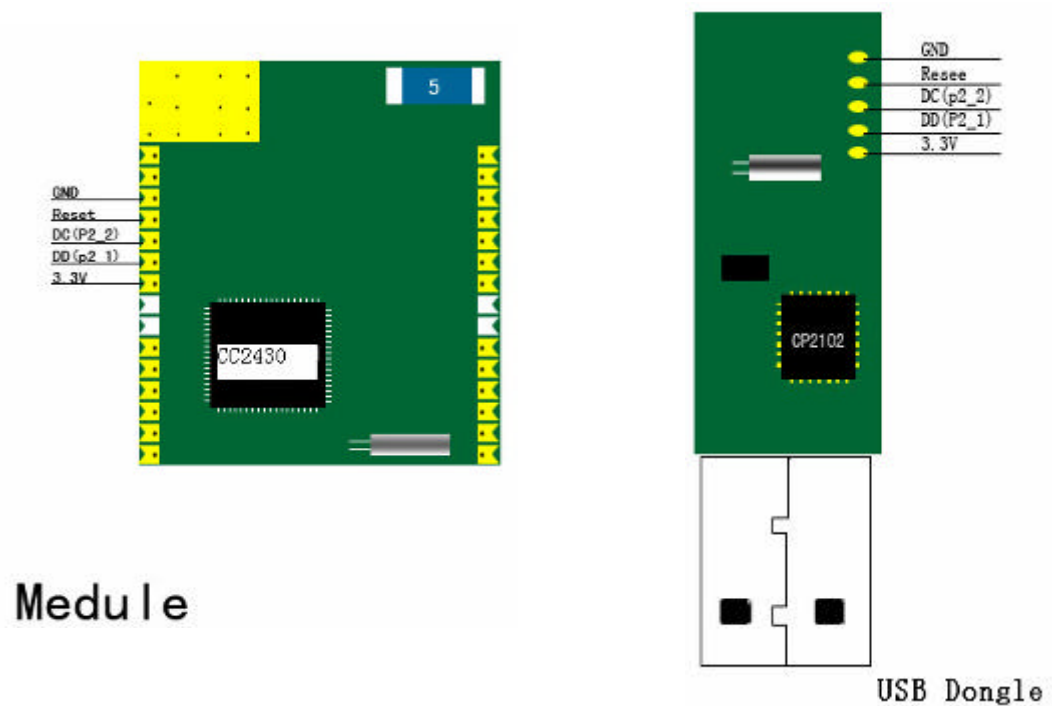
Reset

CC2430DB board or CC2430EB board can be used to program with RF Module or USB Dongle device. Just to connect the interface shown in below figure with the corresponding pin of RF module or USB dongle is O.K. .

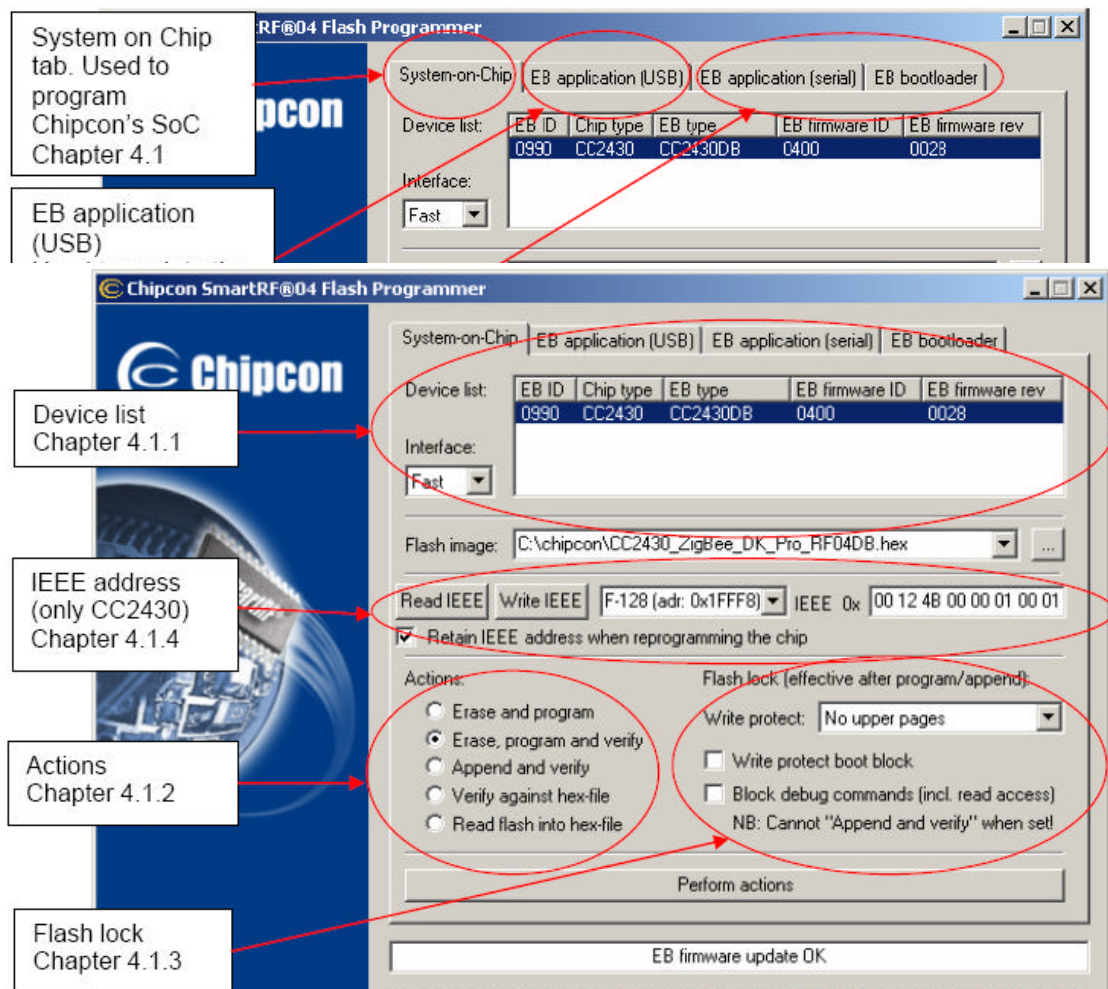
Programming file : HEX file



The programming interface for RF Module and USB Dongle is shown in figure below :



Programming software is: SmartRF04Prog.exe(TI). Set up as below figure :



The OEM integrator has to be aware not to provide information to the end user regarding how to install or remove this RF module in the user manual of the end product. The user manual which is provided by OEM integrators for end users must include the following information in a prominent location.

“ To comply with FCC RF exposure compliance requirements, the antenna used for this transmitter must be installed to provide a separation distance of at least 20 cm from all persons and must not be co-located or operating in conjunction with any other antenna or transmitter.”

Label for end product must include “Contains FCC ID:NRH-ZB-Z100” or “A RF transmitter inside, FCC ID: ID:NRH-ZB-Z100”.

You are cautioned that changes or modifications not expressly approved by the party responsible for compliance could void your authority to operate the equipment.

This device complies with Part 15 of the FCC Rules. Operation is subject to the following two conditions: (1) this device may not cause harmful interference and (2) this device must accept any interference received, including interference that may cause undesired operation

FCC RF Radiation Exposure Statement:

1. This Transmitter must not be co-located or operating in conjunction with any other antenna or transmitter.
2. This equipment complies with FCC RF radiation exposure limits set forth for an uncontrolled environment. This equipment should be installed and operated with a minimum distance of 20 centimeters between the radiator and your body.