

产品主要技术参数

主要技术参数		Main technical specifications	
频率范围 (MHZ)	868-923	Frequency Range(MHZ)	868-923
中心频率 特性阻抗 (Ω)	50±10	Impedance(Ω)	50±10
反射损耗	≤-10	ReTurnLoss(dB)	≤-10
最大功率	1W	Admitted Power	1W
极化方式	垂直极化	Polarization	Linear Vertical
连接方式	IPEX	Connector Type	IPEX
物理特性		Physical Properties	
天线本体材料	FPC	Antenna Base	FPC
工作温度	-20℃-+60℃	Operating Temp	-20℃-+60℃
保存温度	-20℃-+70℃	Storage Temp	-20℃-+70℃

原材料清单:

组件编号	组件名称	原料主要材质	使用数量	单位	备注
1	FPC	双面胶+低损耗黄色覆盖膜	1	PCS	
2	1.13 线	1.13 线	1	PCS	
3	IPEX	IPEX	1	PCS	
4	背胶	背胶	1	PCS	

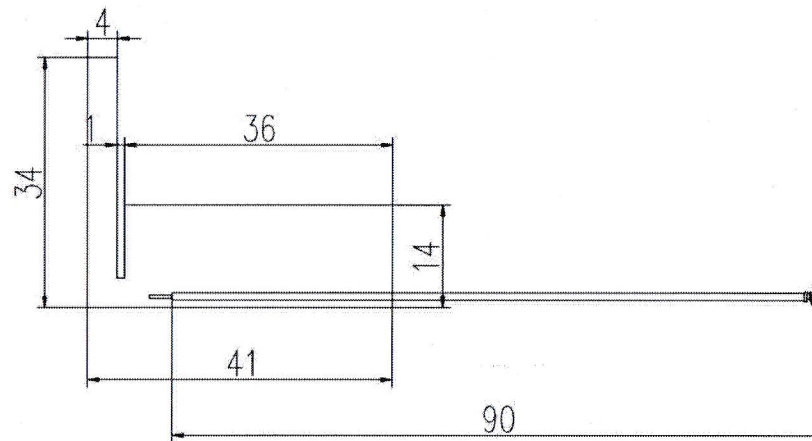
深圳市速飞科技有限公司

ShenZhen SuFei Technology Co.,Ltd



ROHS

REV.	CONTENT	DATE
A	首次发行	2018/1/22



NOTE:

1. 频率863MHz-928MHz
2. RG1.13
阻抗: 50Ω 标准线材, 外皮采用较软的材质制作
3. IPEX头: Φ1.13mm

深圳市速飞科技有限公司		CUSTOMER			
		PART NO			
		TITLE			
		S. H P/NO			
UNIT: mm	TOLERANCE UNLESS OTHERWISE SPECIFIED	SIZE	DRAWN:	CHECKED	APPROVED
SHEET: 1/1	ANGLES ±0.5° X. ±2.0	A4	Alice	Lili	Peter
SCALE: 1/1	X.X ±0.2 XX. ±3.0				
	X.X ±0.5 DATE: 2017.11.21				

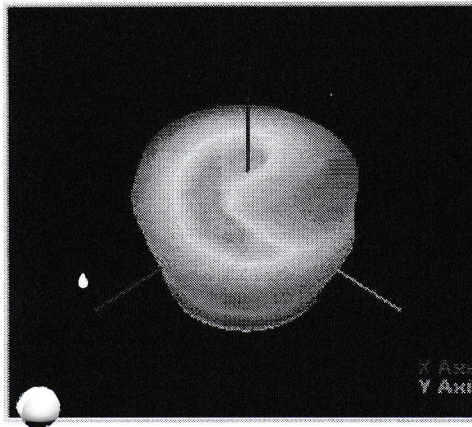
NO.	Name	Finished	Qty
4			1PC
3			1PC
2			1PC
1			1PC



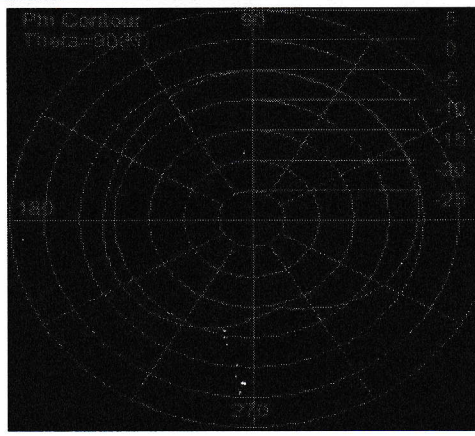
深圳市速飞科技有限公司

ShenZhen SuFei Technology Co.,Ltd

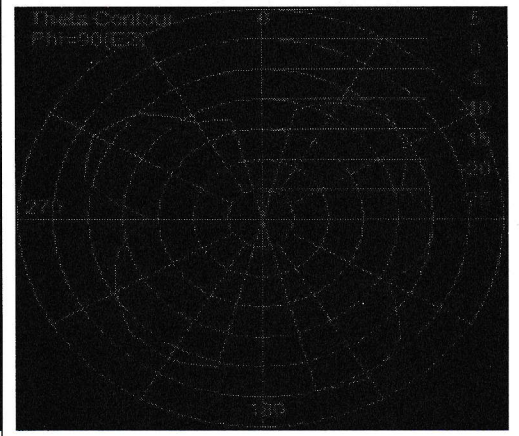
2D、3DRaditation Pattern



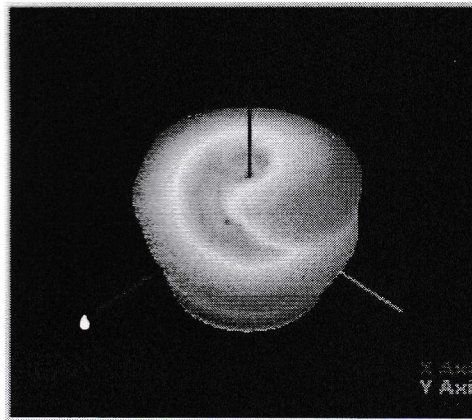
860M



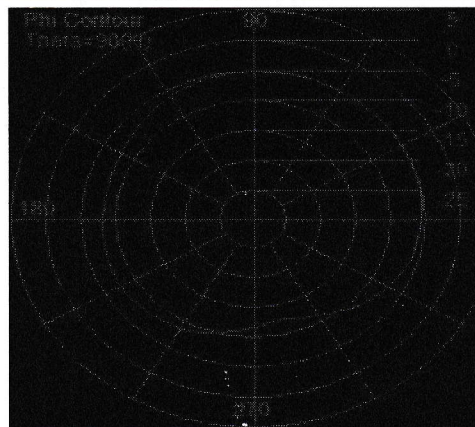
Gain(Peak):0.8dBi



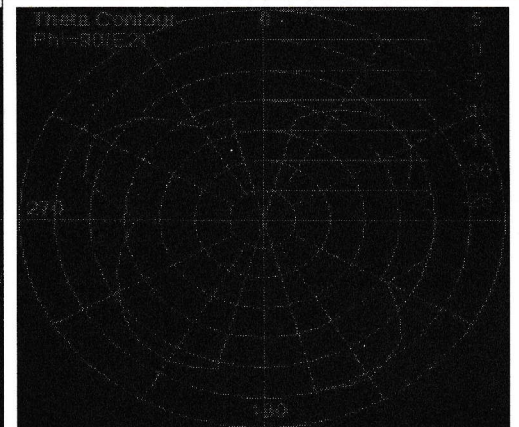
Efficiency:28.2%



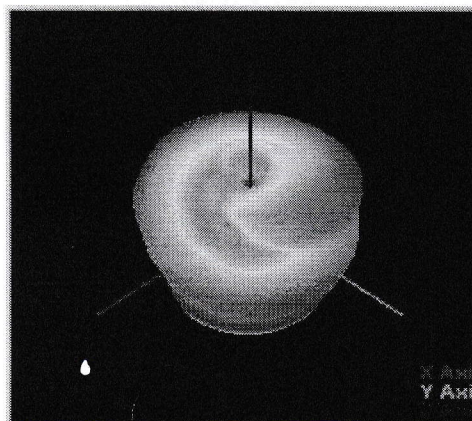
870M



Gain(Peak):0.85dBi



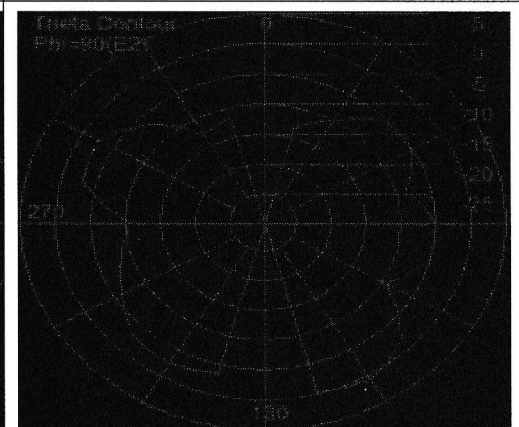
Efficiency:28.6%



880M



Gain(Peak):0.66dBi



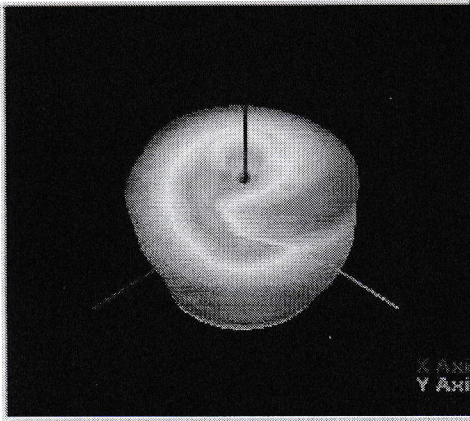
Efficiency:27.4%

有限公司

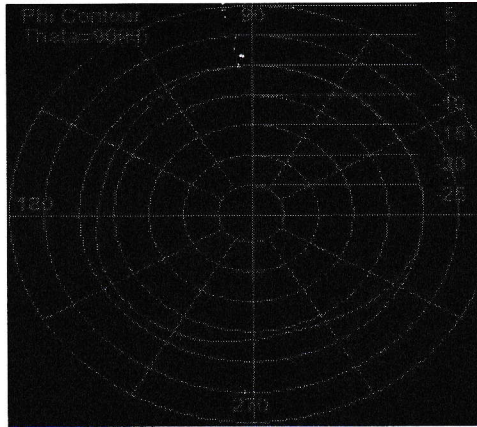


深圳市速飞科技有限公司

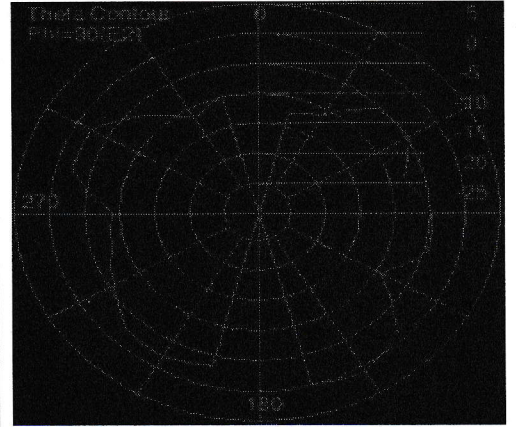
ShenZhen SuFei Technology Co.,Ltd



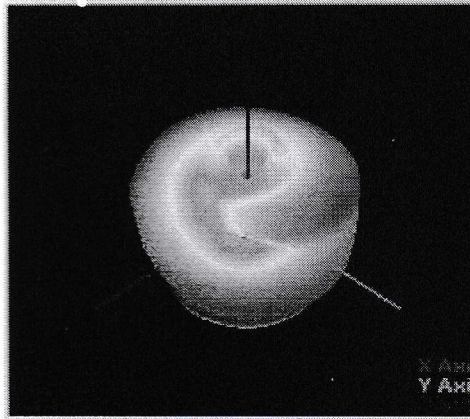
890M



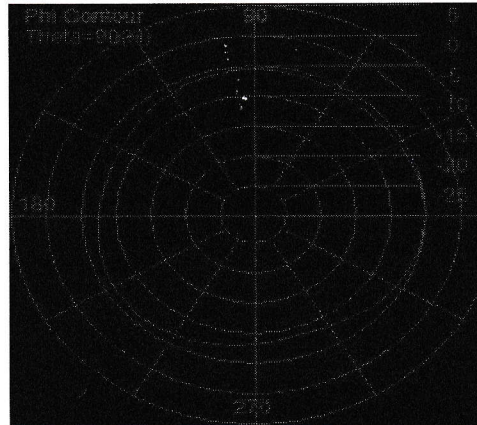
Gain(Peak):0.98dBi



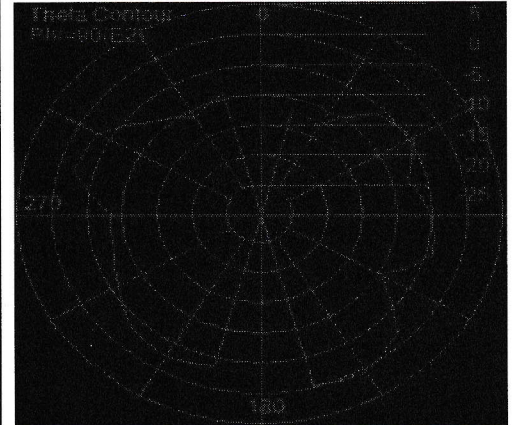
Efficiency:29.2%



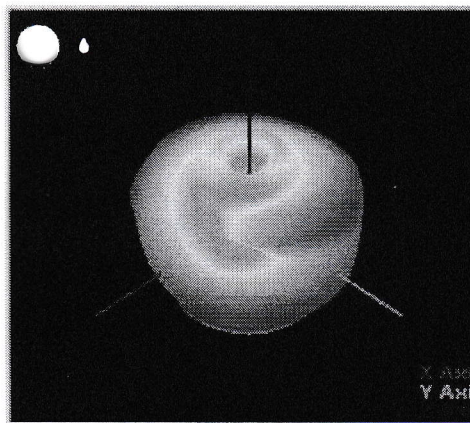
900M



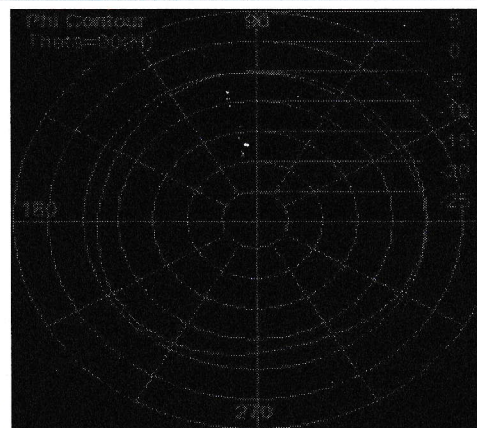
Gain(Peak):0.72dBi



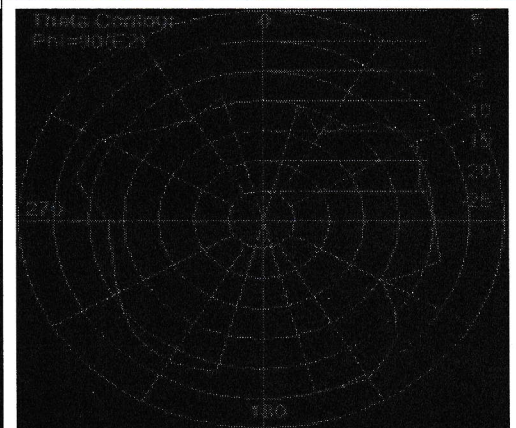
Efficiency:27.6%



910M



Gain(Peak):0.78dBi

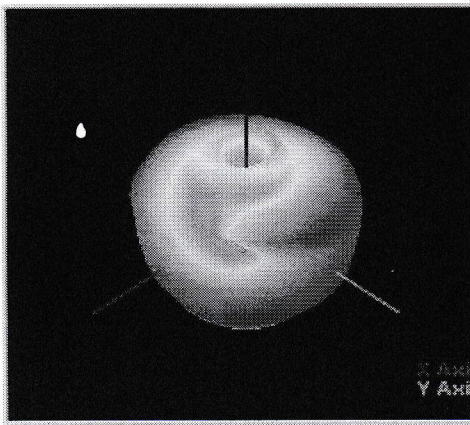


Efficiency:28.3%

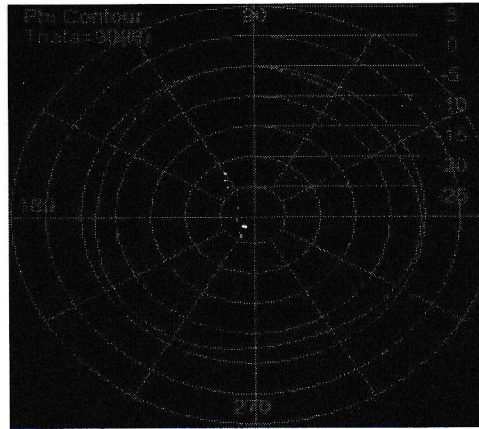


深圳市速飞科技有限公司

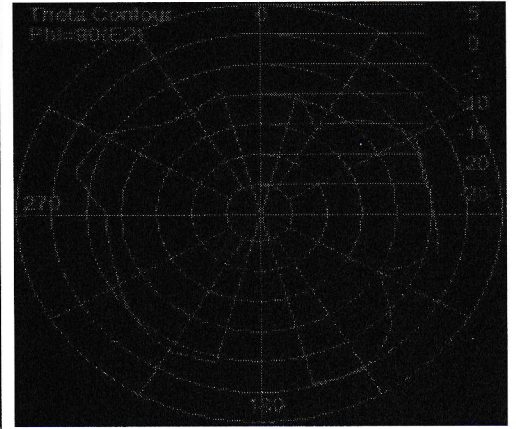
ShenZhen SuFei Technology Co.,Ltd



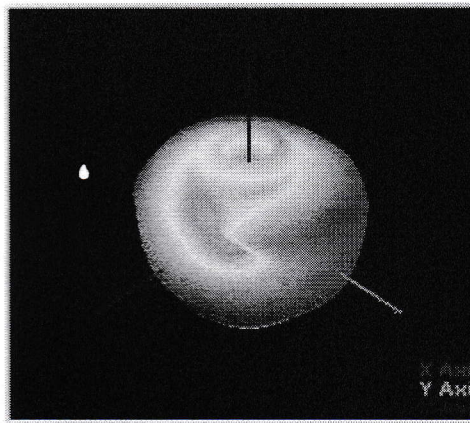
920M



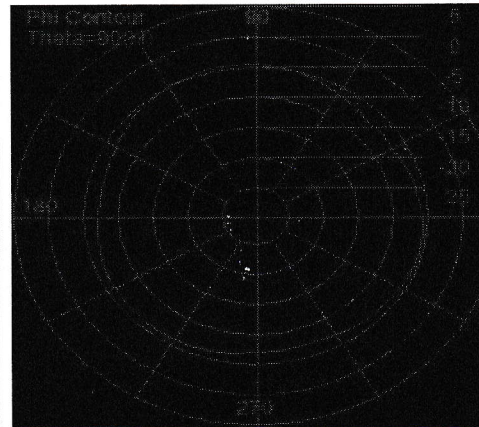
Gain(Peak):0.34dBi



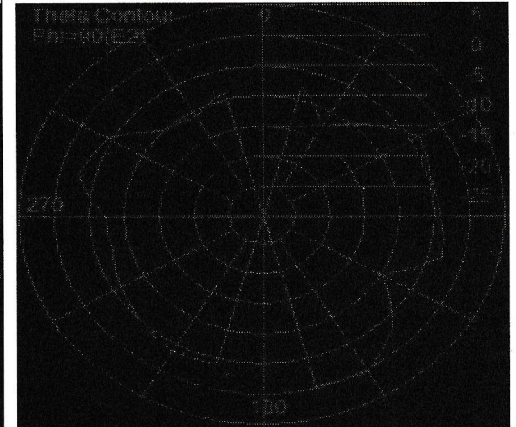
Efficiency:25.9%



930M



Gain(Peak):0.36dBi



Efficiency:26.2%