

**Exhibit 1: FCC ID Label**

Equipment Identification Label

In accordance with the requirements of Sections 15.19 (a), 2.925 and 2.926 of the FCC Rules, the following information will be permanently affixed to the World Wireless Communications, Inc. Model 900  $\mu$ Hopper as shown in the sketch below.

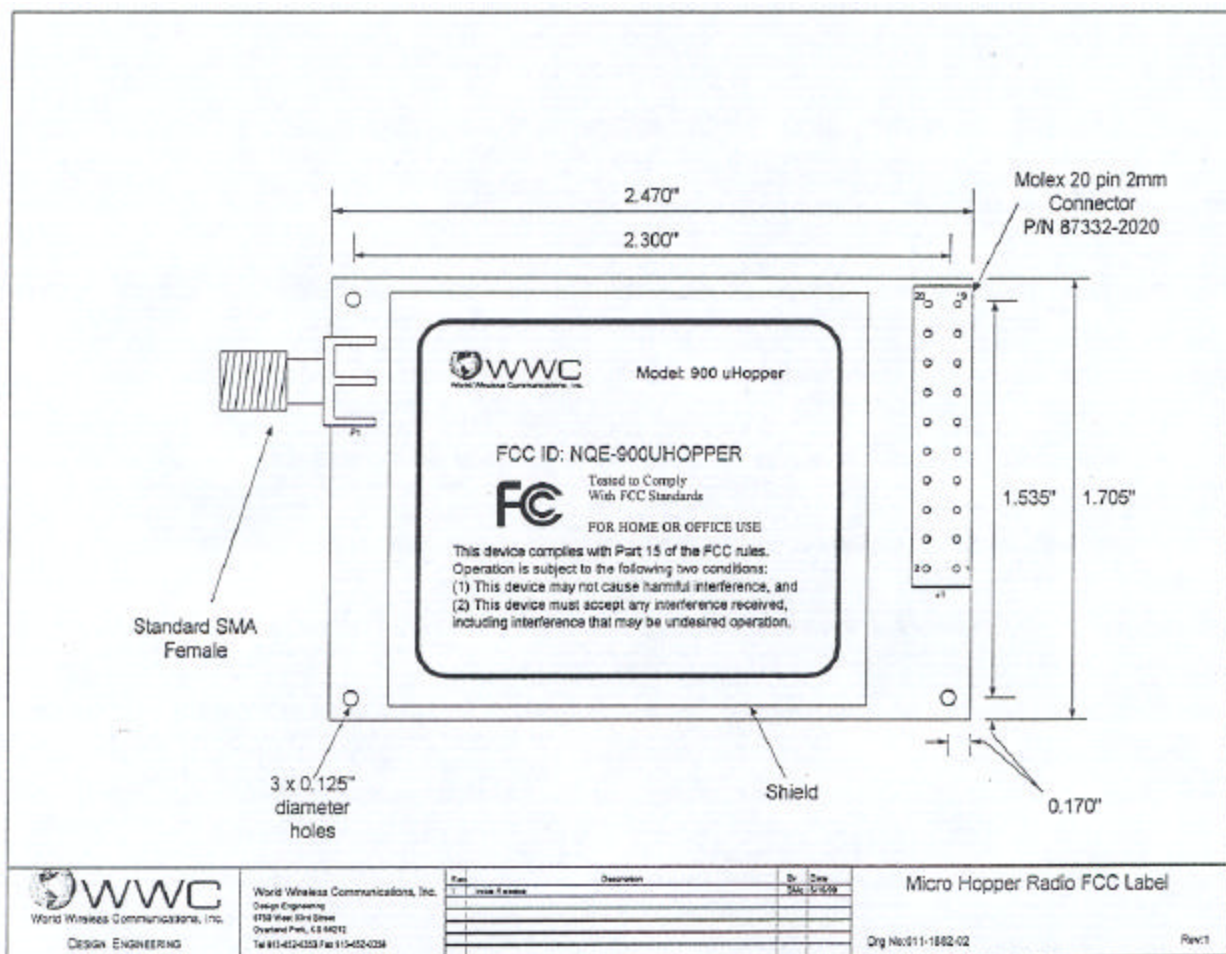


Exhibit 1