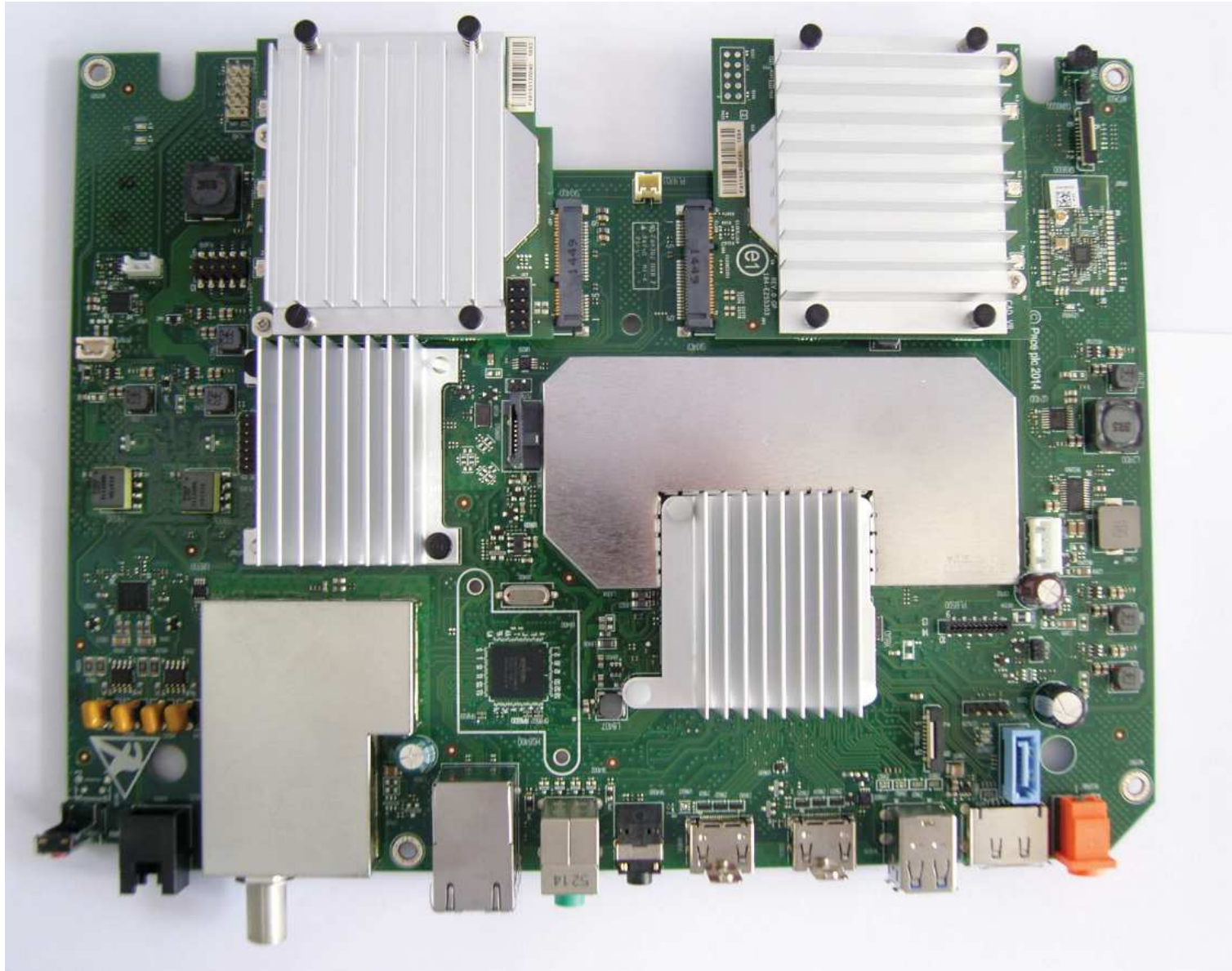


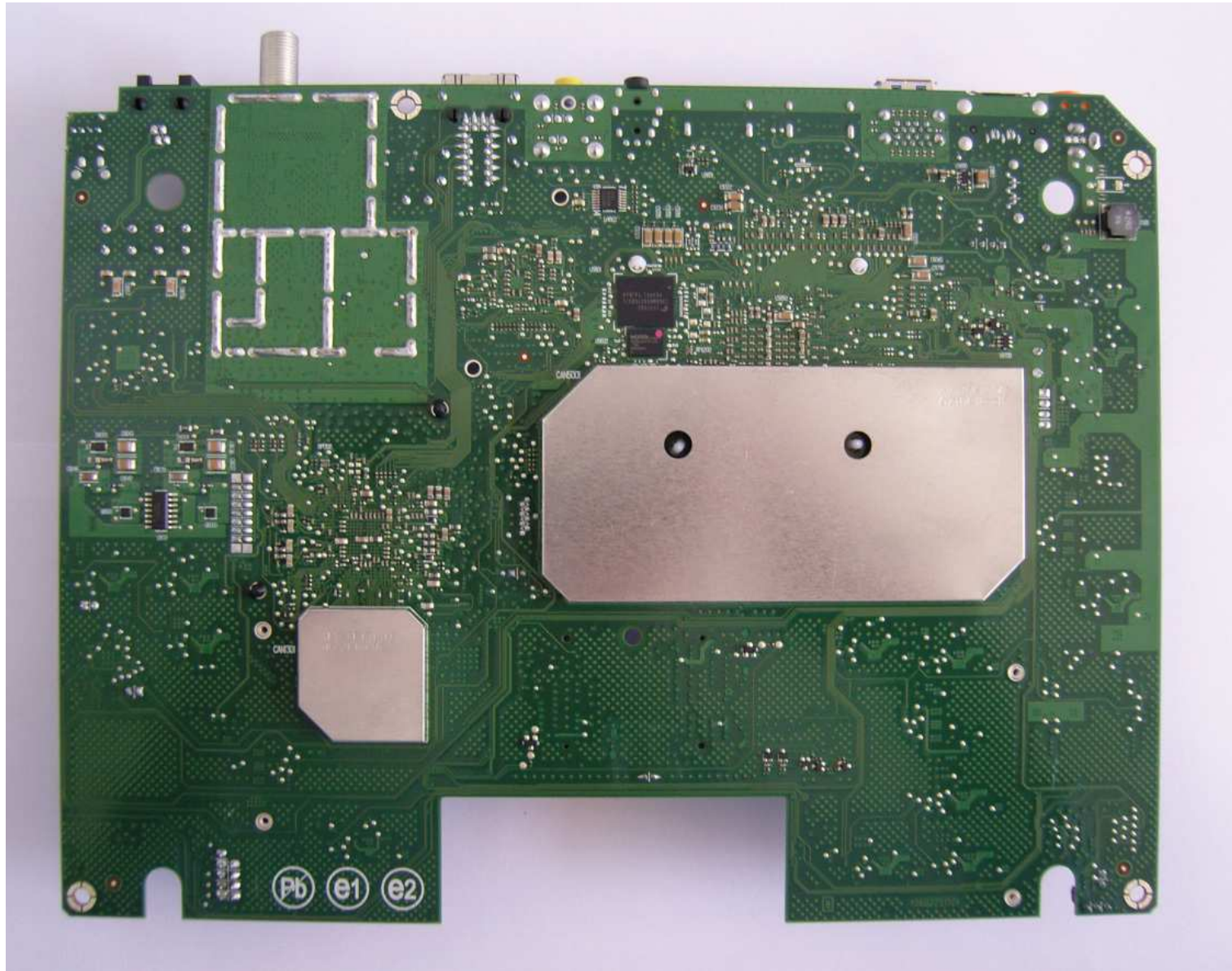
Main PCB

Top side View



Main PCB

Bottom side view

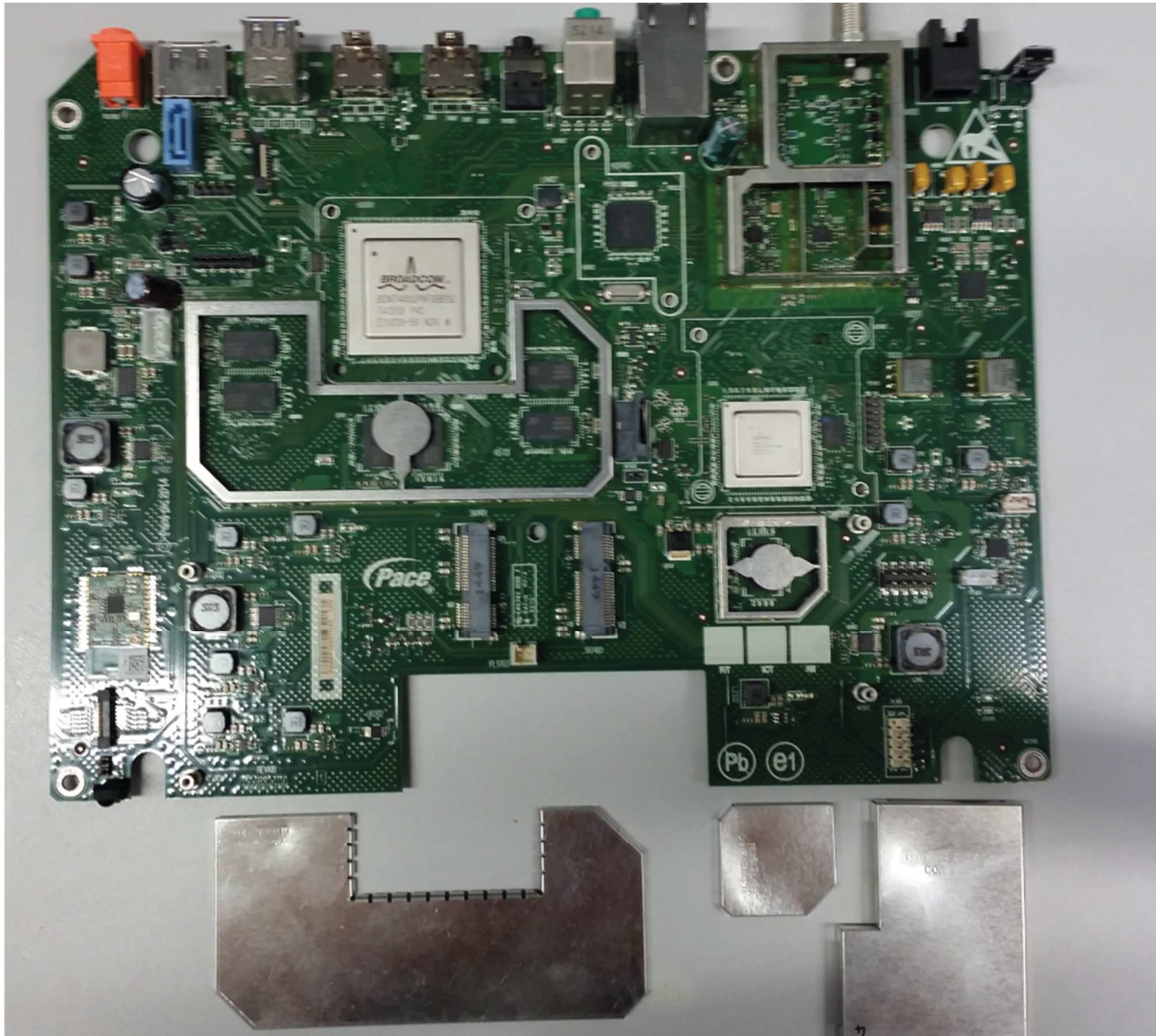


Main PCB

Top side view

Heat-sinks and shield

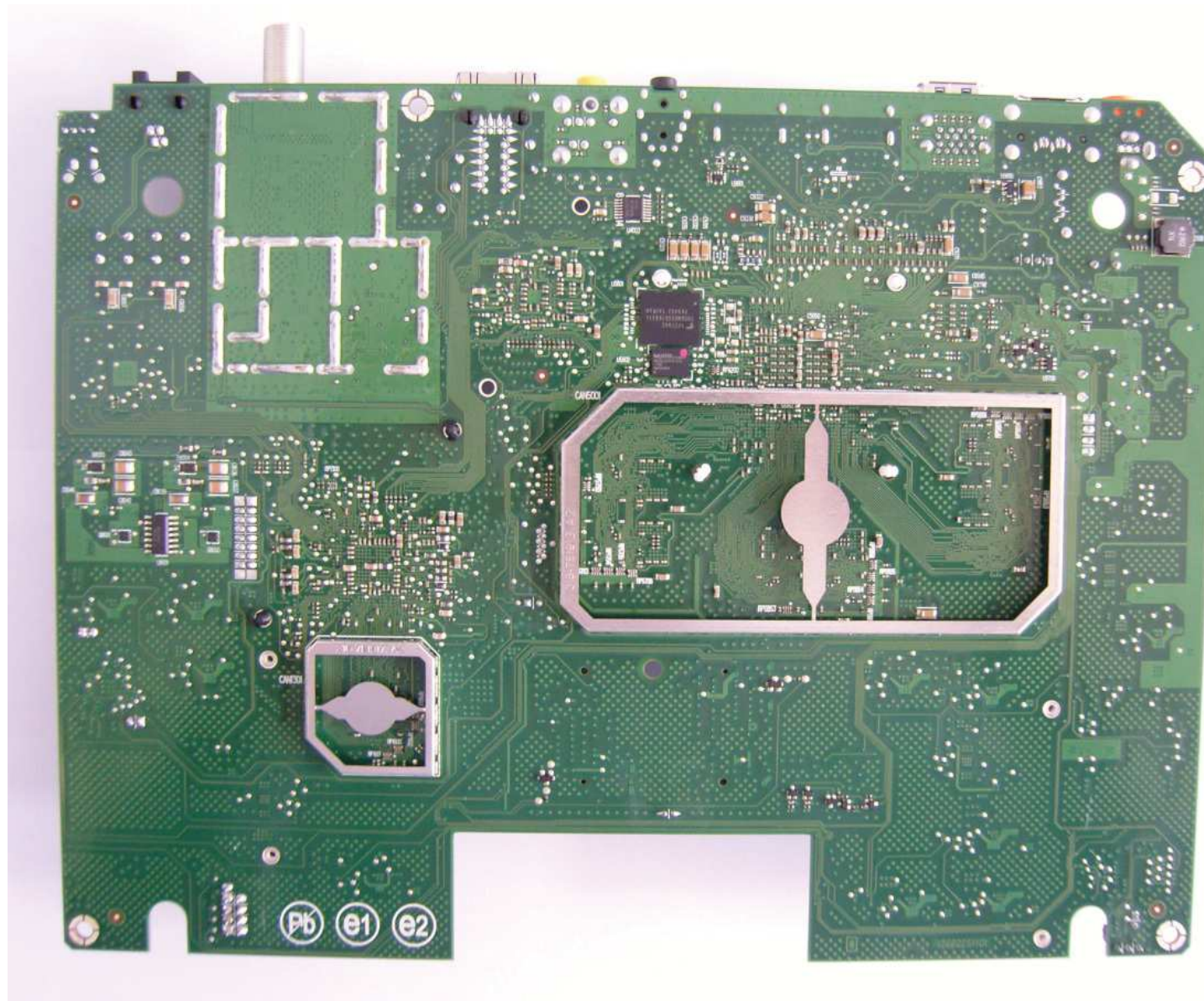
Lids removed



Main PCB

Bottom side view

Shield Lids removed



5GHz WiFi PCB

Top side view

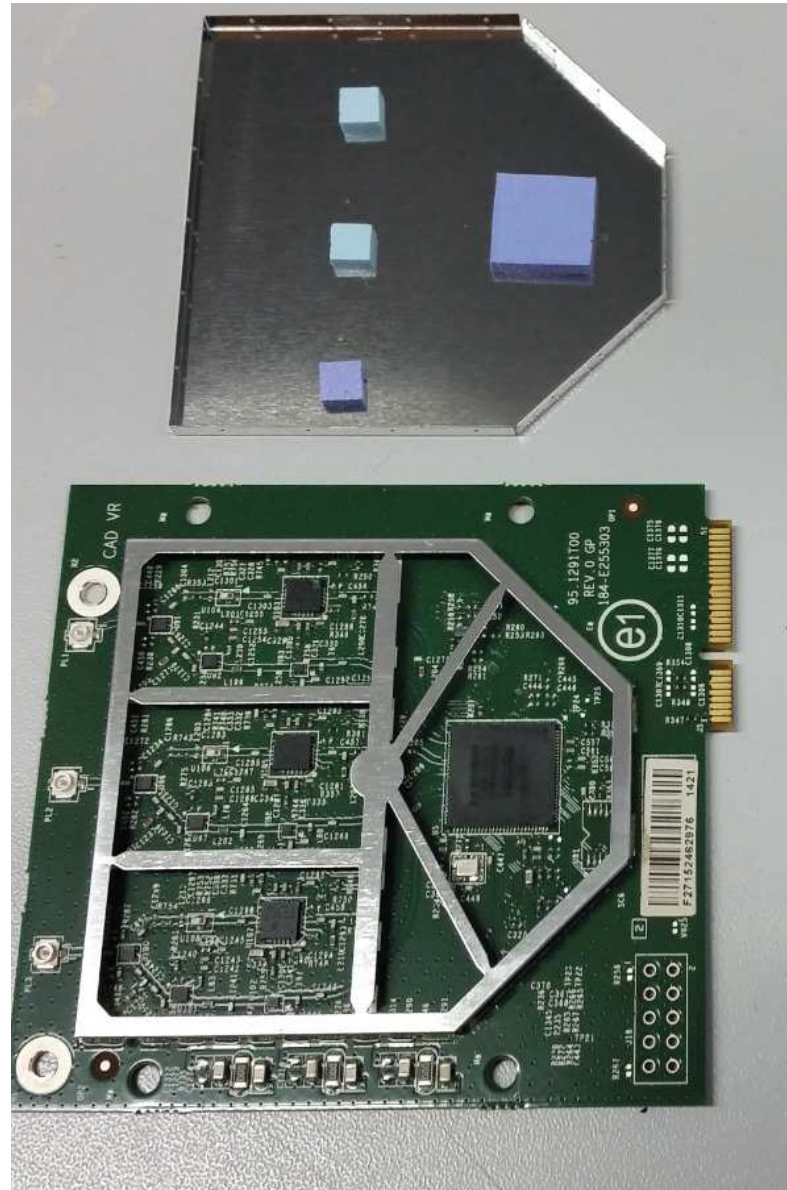
Heat-sink Removed



5GHz WiFi PCB

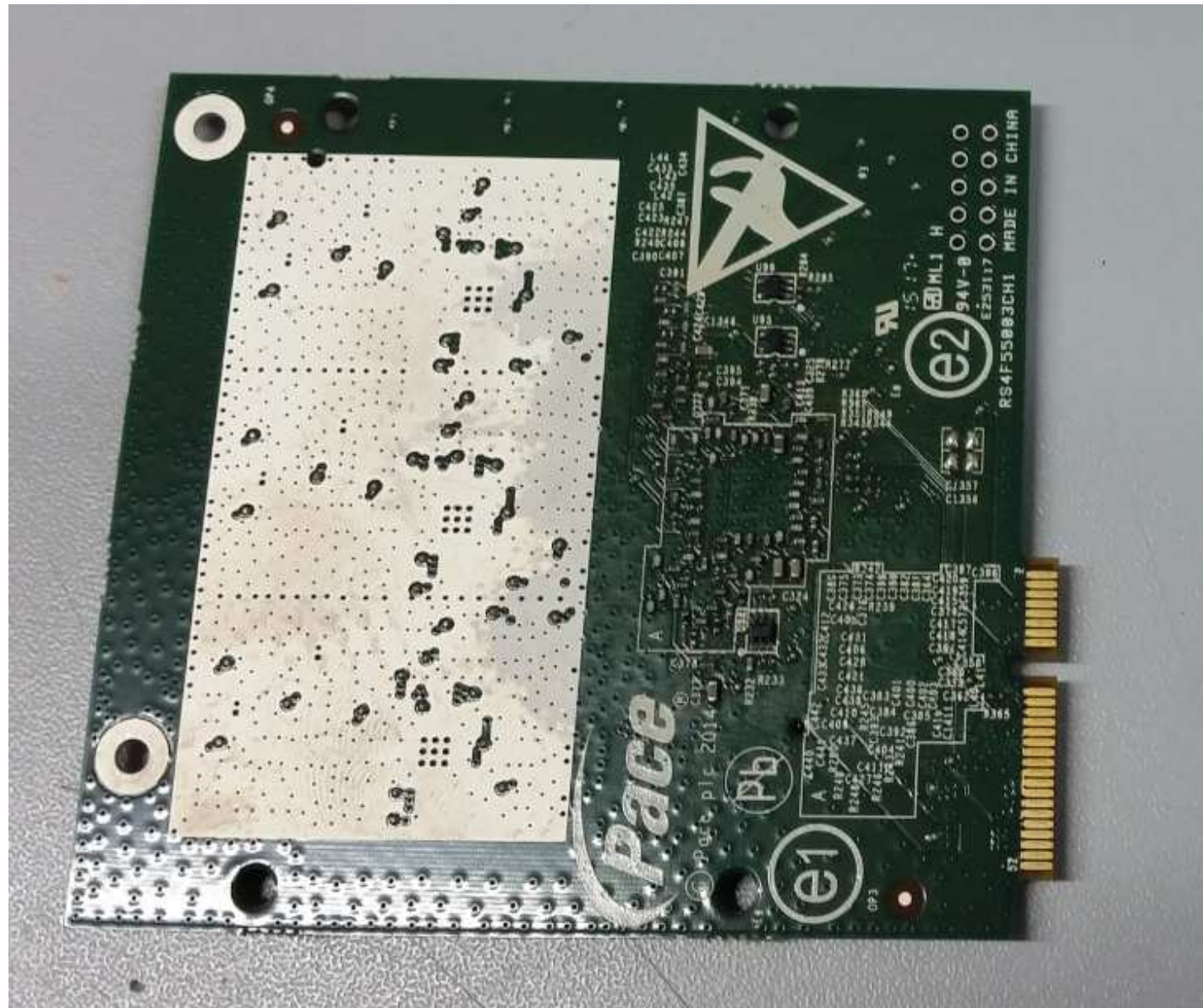
Top side view

*Heat-sink and Shield
lid Removed*



5GHz WiFi PCB

Bottom side view



2.4GHz WiFi PCB

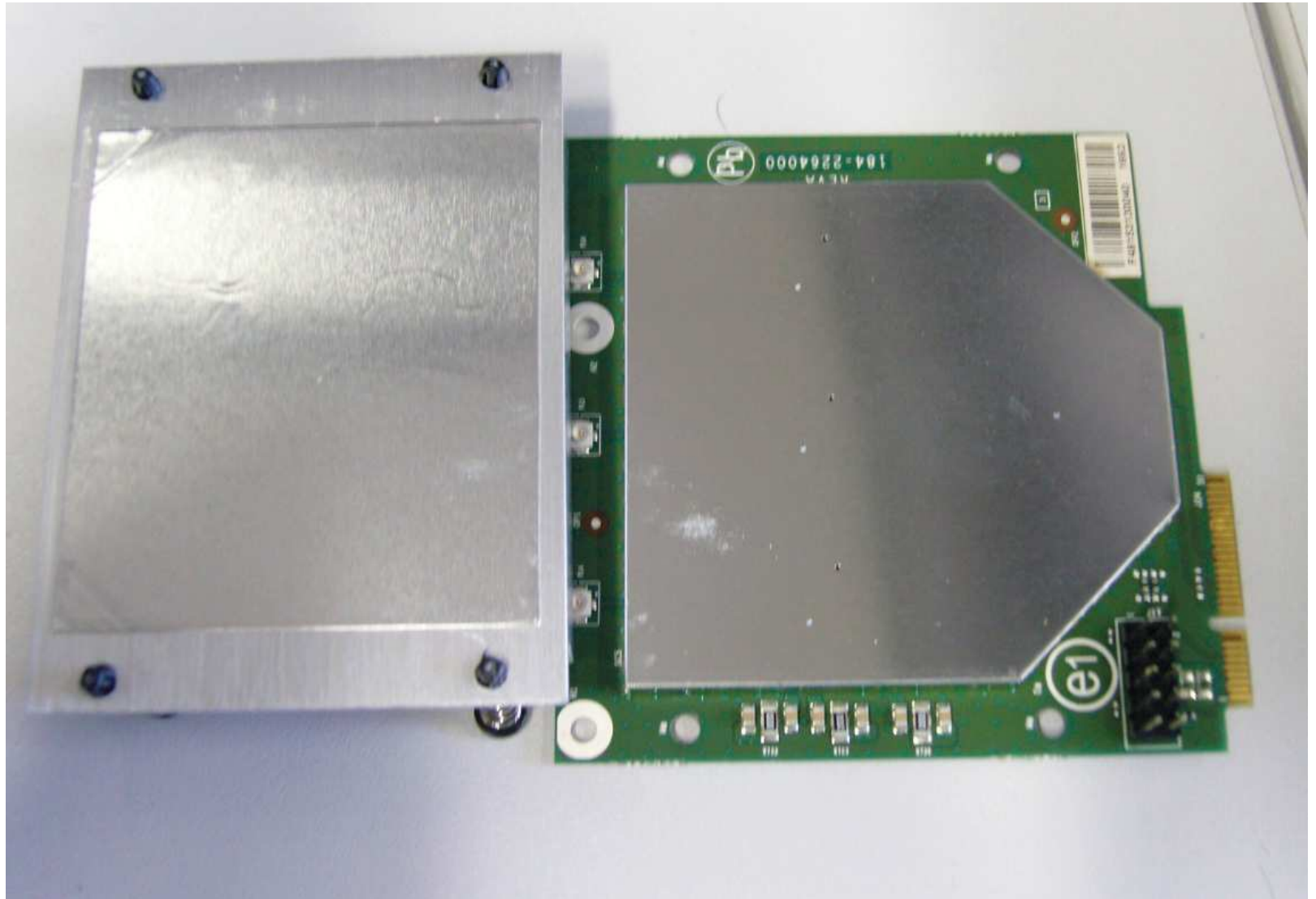
Top side view



2.4GHz WiFi PCB

Top side view

Heat-sink removed

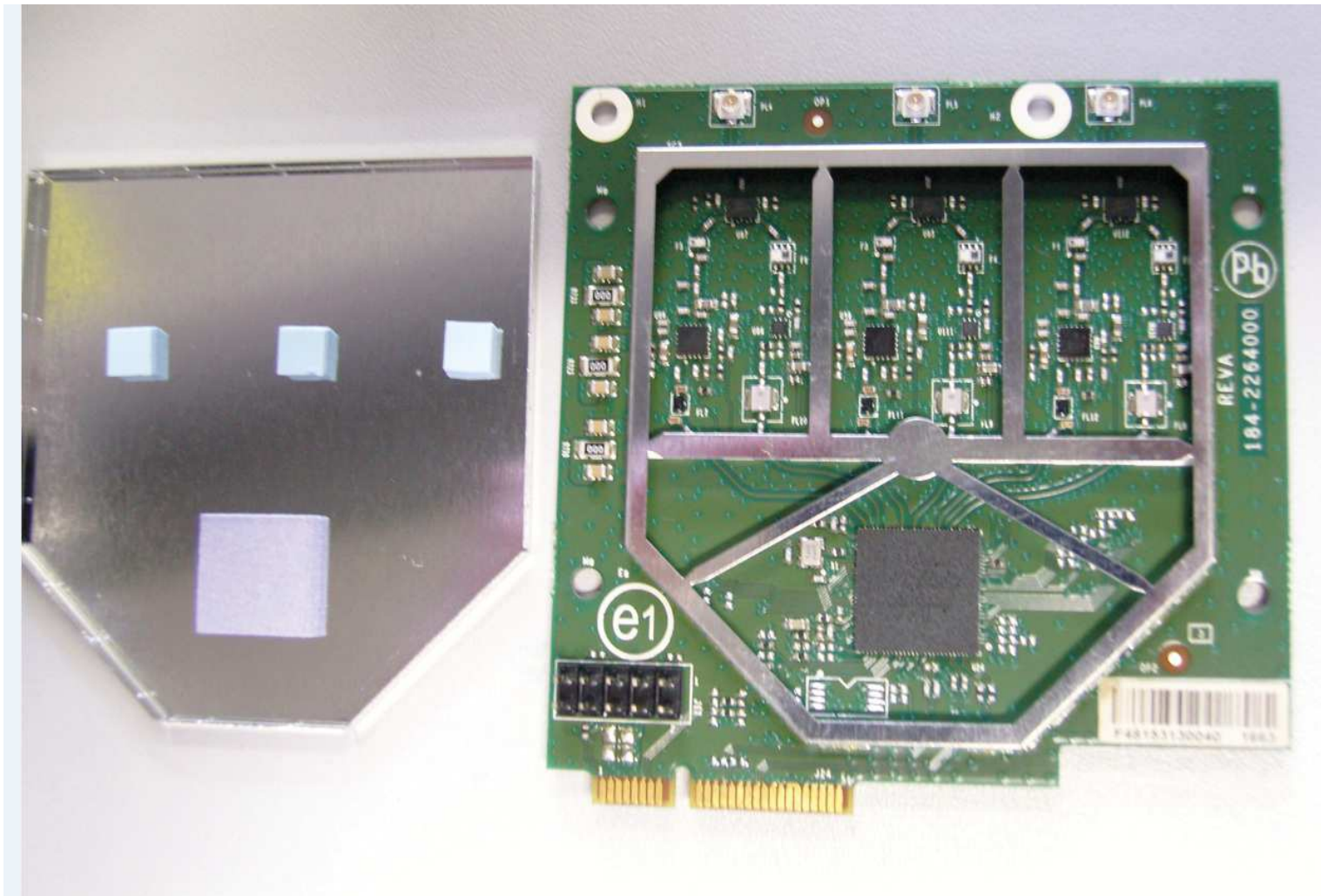


2.4GHz WiFi PCB

Top side view

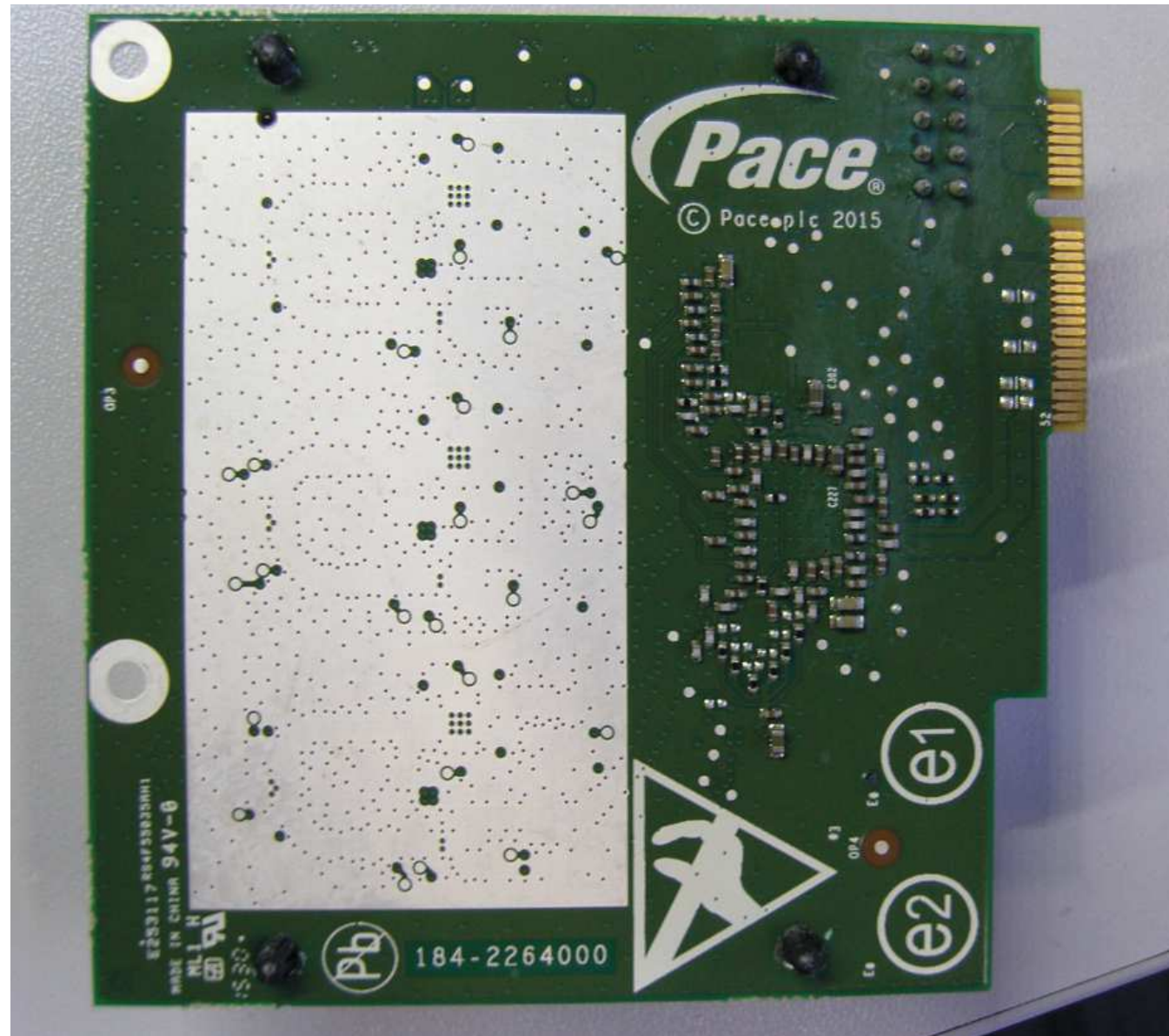
Heat-sink removed

Shield Lid Removed



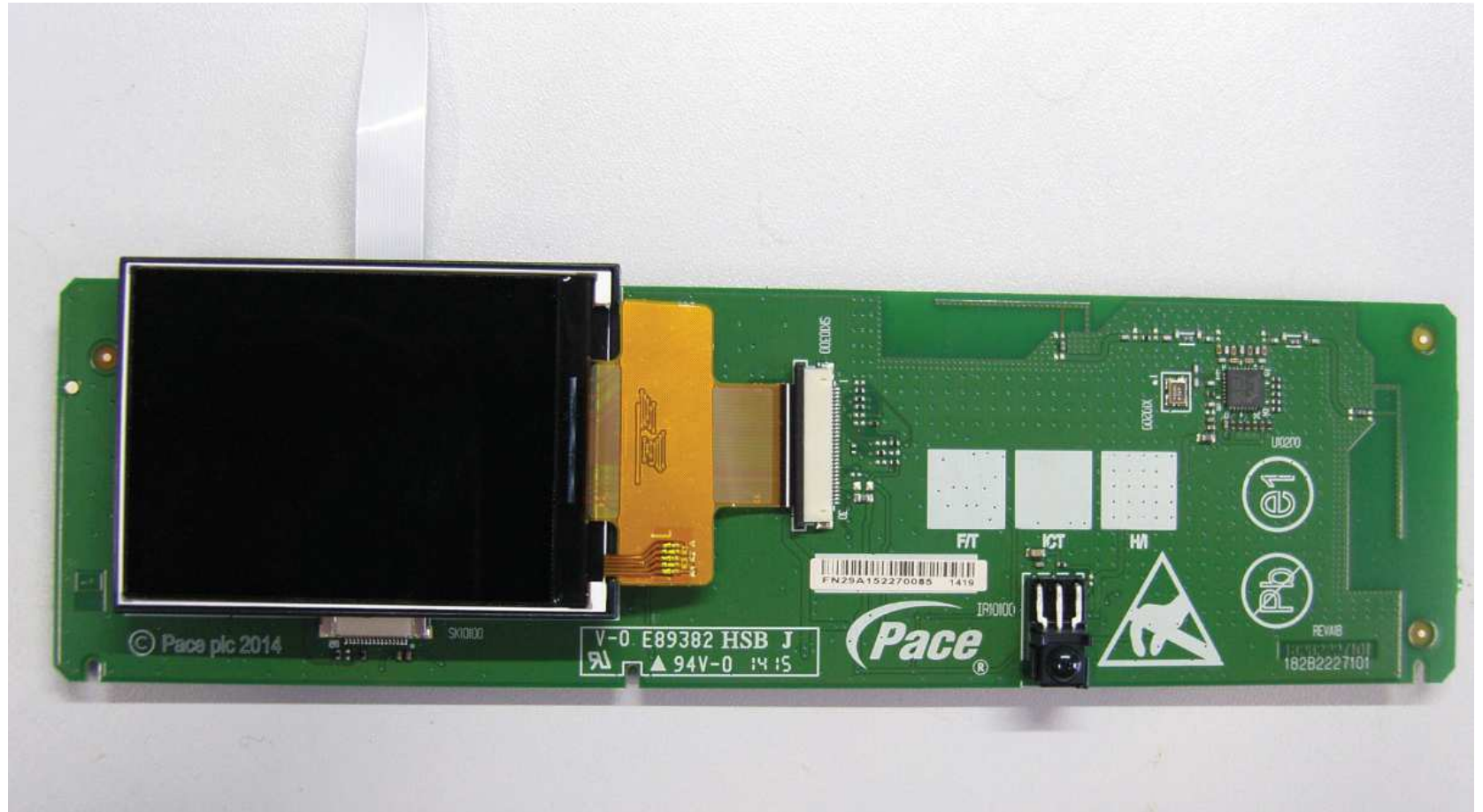
2.4GHz WiFi PCB

Bottom side view



Front Panel PCB

Front side view



Front Panel PCB

Front side view

LCD screen moved



Front Panel PCB

Rear side view

