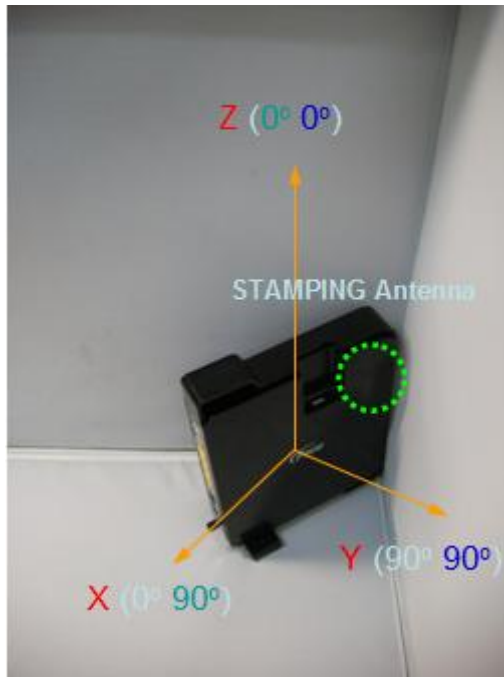


**3325-G70 Test Report**  
**A5500**

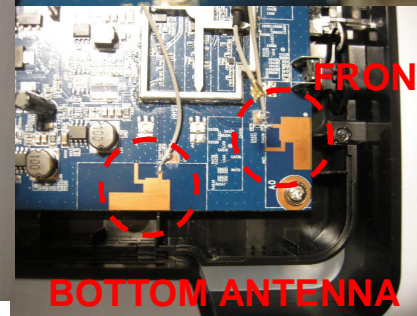
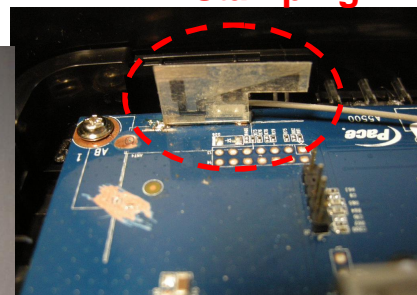
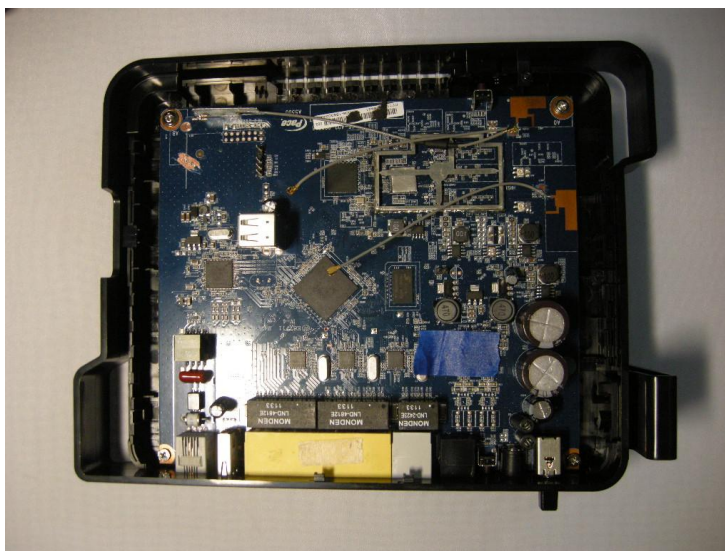
**亞驪企業股份有限公司**

**2012.02.06**

## 1. Antenna Photo



**Stamping PIFA ANTENNA**

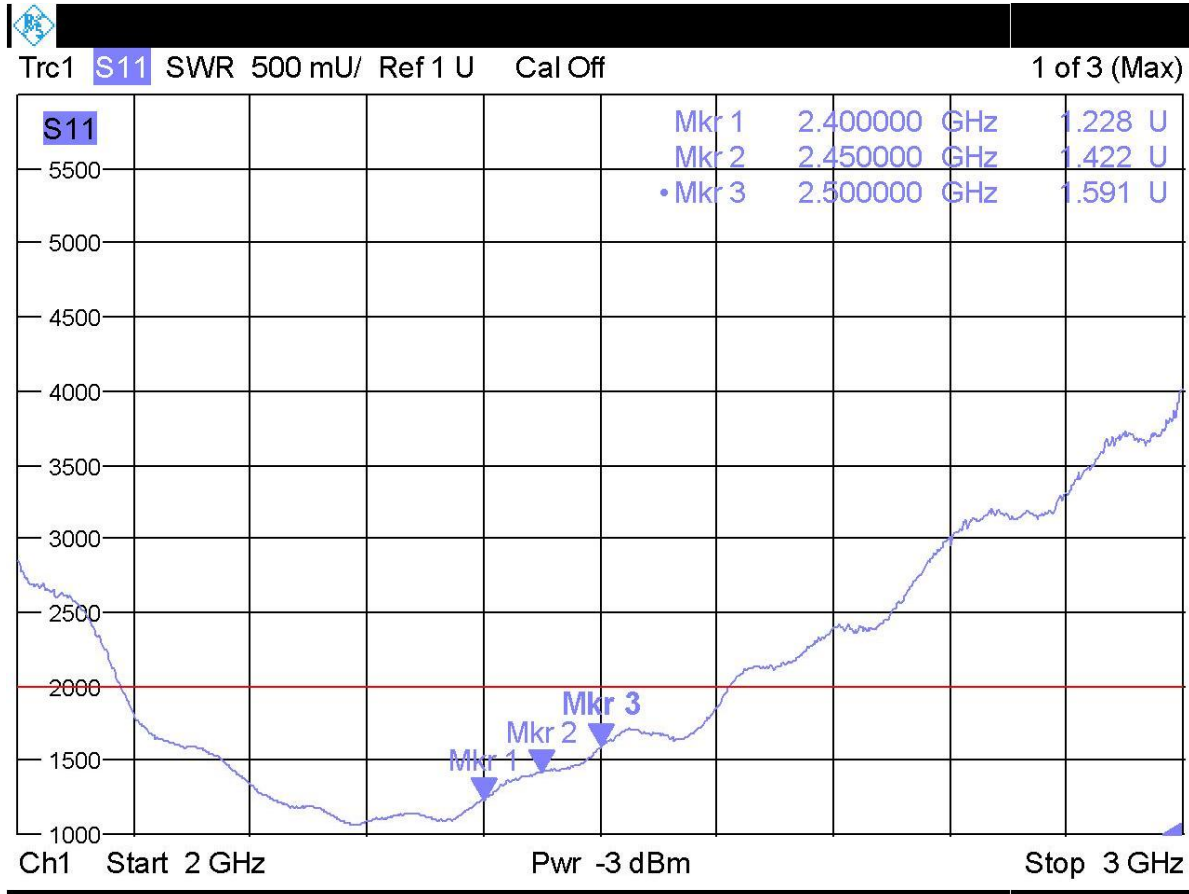


**FRONT ANTENNA**

**BOTTOM ANTENNA**

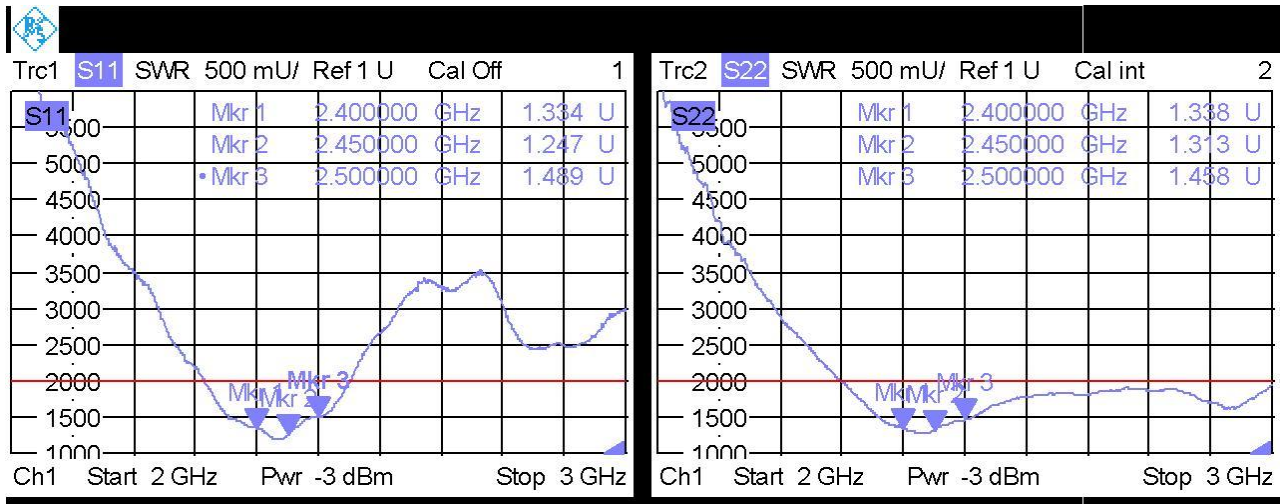
## 2.VSWR

### Stamping PIFA ANTENNA



Date: 17.NOV.2011 10:32:52

Port#1 : FRONT ANTENNA  
 Port#2 : BOTTOM ANTENNA



### 3. Gain Table

#### 3.1 Stamping PIFA(G70)

Frequency	3D			V+H Avg. Gain			V+H Peak Gain		
	Efficiency	Avg. Gain	Peak Gain	XY-plane	YZ-plane	ZX-plane	XY-plane	YZ-plane	ZX-plane
2400MHz	77%	-1.1	4.8	-1.4	-1.4	-2.1	1.3	1.3	1.1
2450MHz	76%	-1.2	4.5	-1.1	-1.1	-2.0	1.8	1.8	1.2
2500MHz	76%	-1.2	4.4	-0.9	-0.9	-2.0	1.9	1.9	1.2

#### 3.2 On-board PIFA @ FRONT

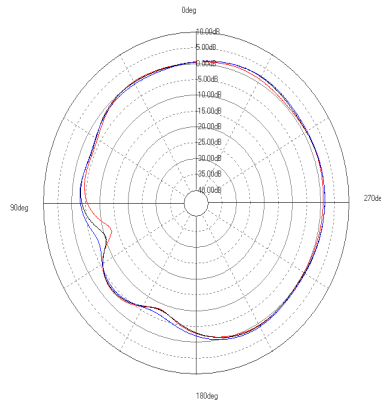
Frequency	3D			V+H Avg. Gain			V+H Peak Gain		
	Efficiency	Avg. Gain	Peak Gain	XY-plane	YZ-plane	ZX-plane	XY-plane	YZ-plane	ZX-plane
2400MHz	74%	-1.3	4.5	-3.3	-1.2	-1.9	-1.4	4.4	4.3
2450MHz	69%	-1.6	4.1	-3.0	-1.6	-2.1	-1.2	4.1	4.0
2500MHz	60%	-2.2	4.0	-3.0	-2.1	-2.7	-1.4	3.3	3.5

#### 3.3 On-board PIFA @ BOTTOM

Frequency	3D			V+H Avg. Gain			V+H Peak Gain		
	Efficiency	Avg. Gain	Peak Gain	XY-plane	YZ-plane	ZX-plane	XY-plane	YZ-plane	ZX-plane
2400MHz	69%	-1.6	4.1	-0.8	-2.3	-2.5	2.4	-0.1	2.1
2450MHz	69%	-1.6	4.0	-0.7	-2.3	-2.6	2.5	0.1	1.8
2500MHz	69%	-1.6	4.1	-0.8	-2.7	-2.9	2.8	-0.2	1.4

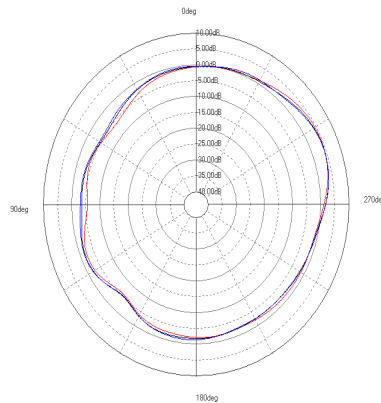
## 4. Pattern

### 4.1 Stamping PIFA(G70)



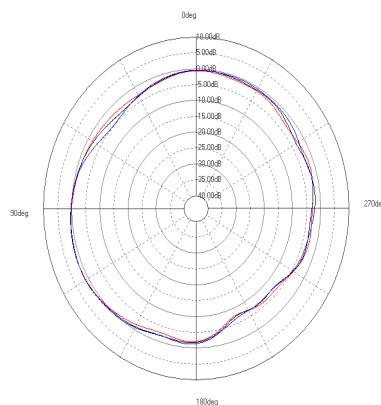
XY-plane

— 2400(MHz)  
— 2450(MHz)  
— 2500(MHz)



YZ-plane

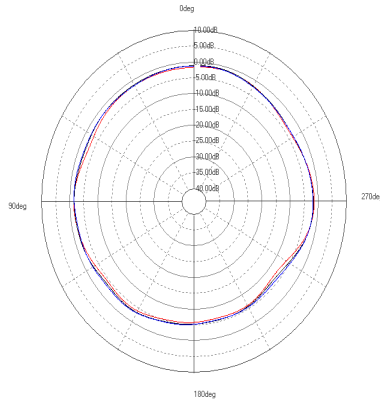
— 2400(MHz)  
— 2450(MHz)  
— 2500(MHz)



ZX-plane

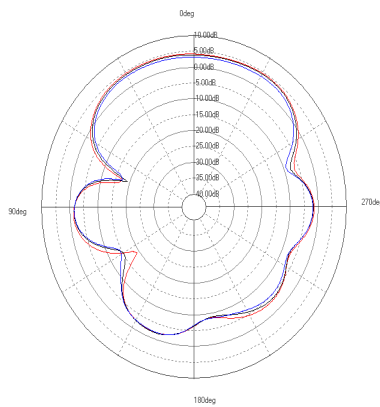
— 2400(MHz)  
— 2450(MHz)  
— 2500(MHz)

**4.2 On-board PIFA @ FRONT**



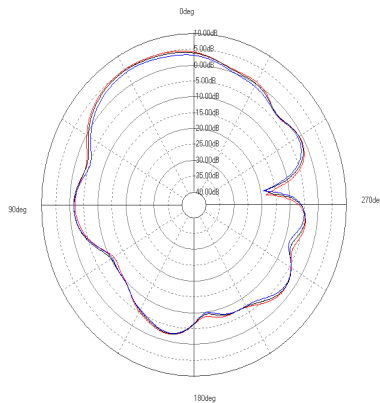
XY-plane

— 2400(MHz)  
— 2450(MHz)  
— 2500(MHz)



YZ-plane

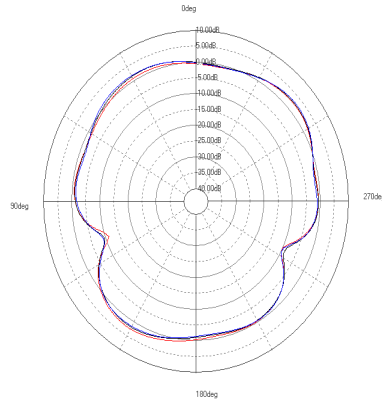
— 2400(MHz)  
— 2450(MHz)  
— 2500(MHz)



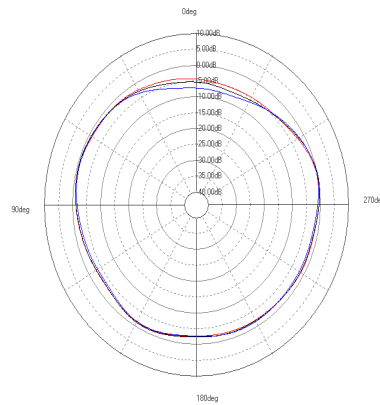
ZX-plane

— 2400(MHz)  
— 2450(MHz)  
— 2500(MHz)

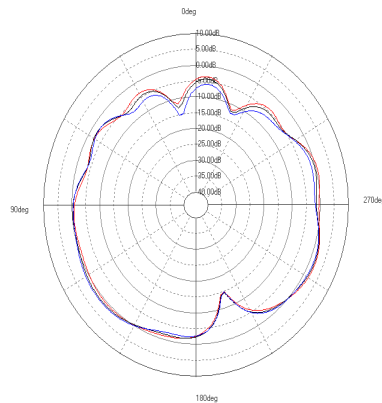
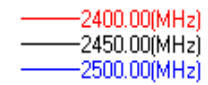
**4.3 On-board PIFA @ BOTTOM**



XY-plane



YZ-plane



ZX-plane

