

Figure 1: TDMA 848.97 Right Cheek Touch

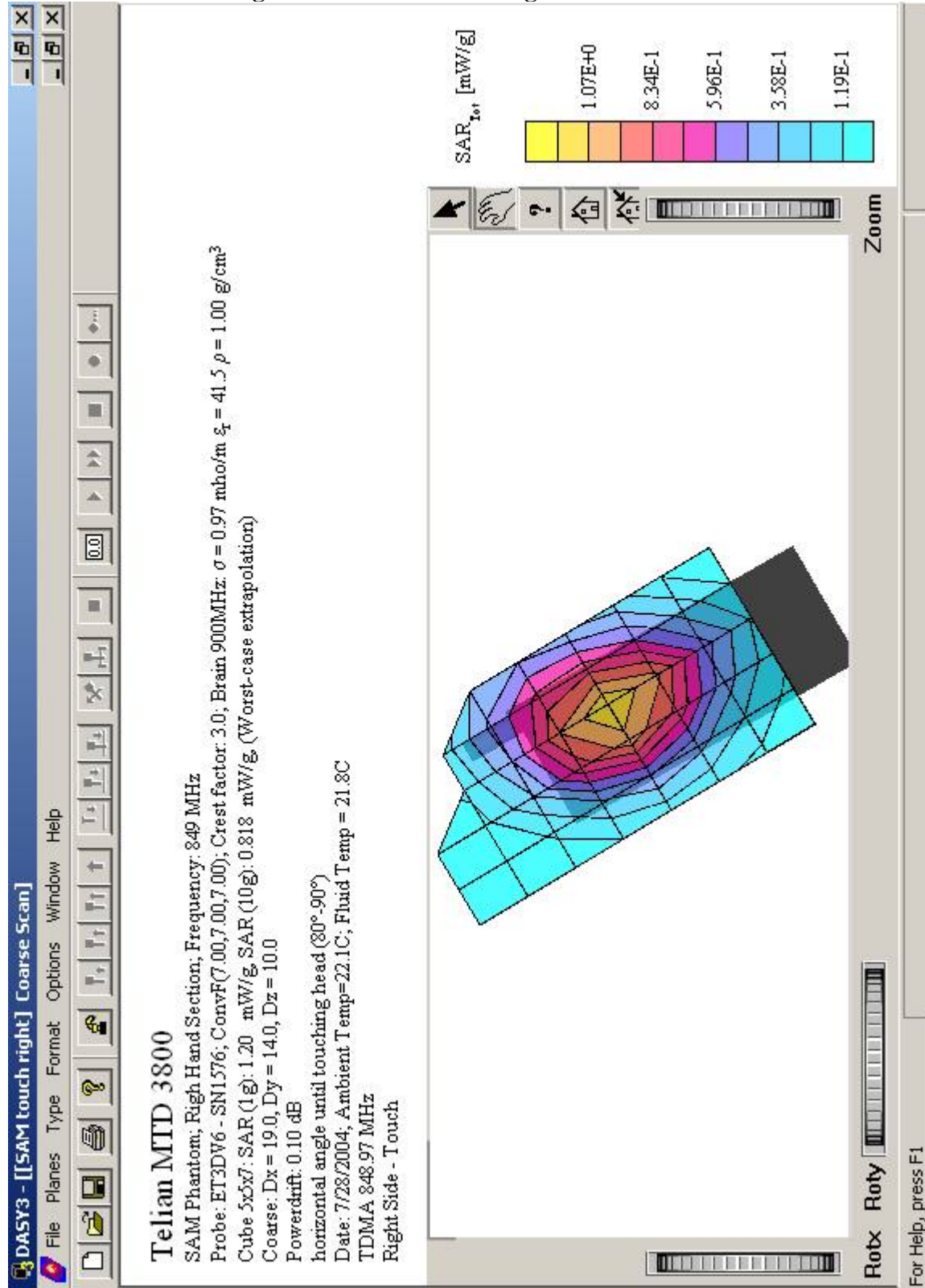


Figure 2: TDMA 848.97 Right Cheek Tilt

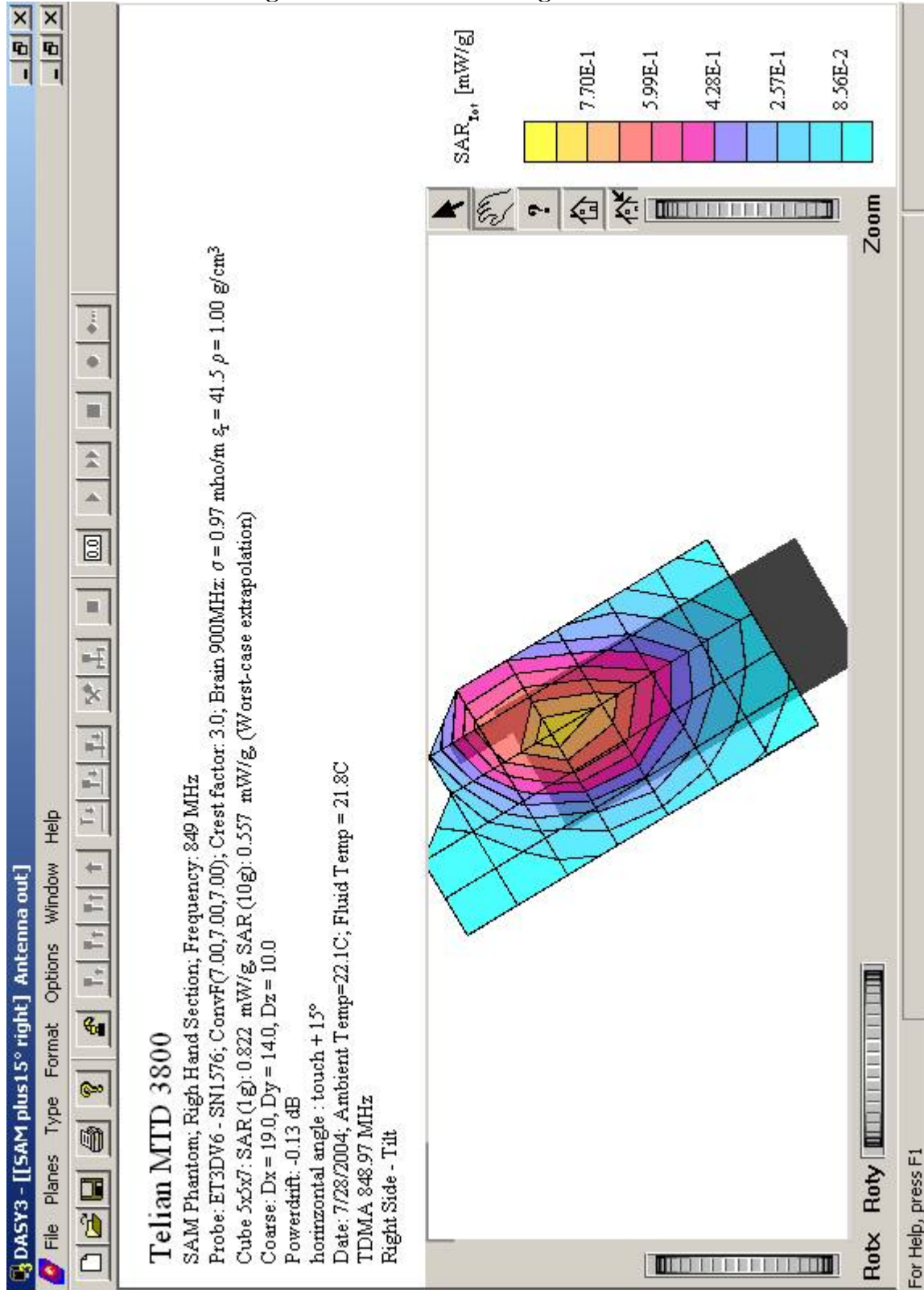


Figure 3: TDMA 848.97 Left Cheek Touch

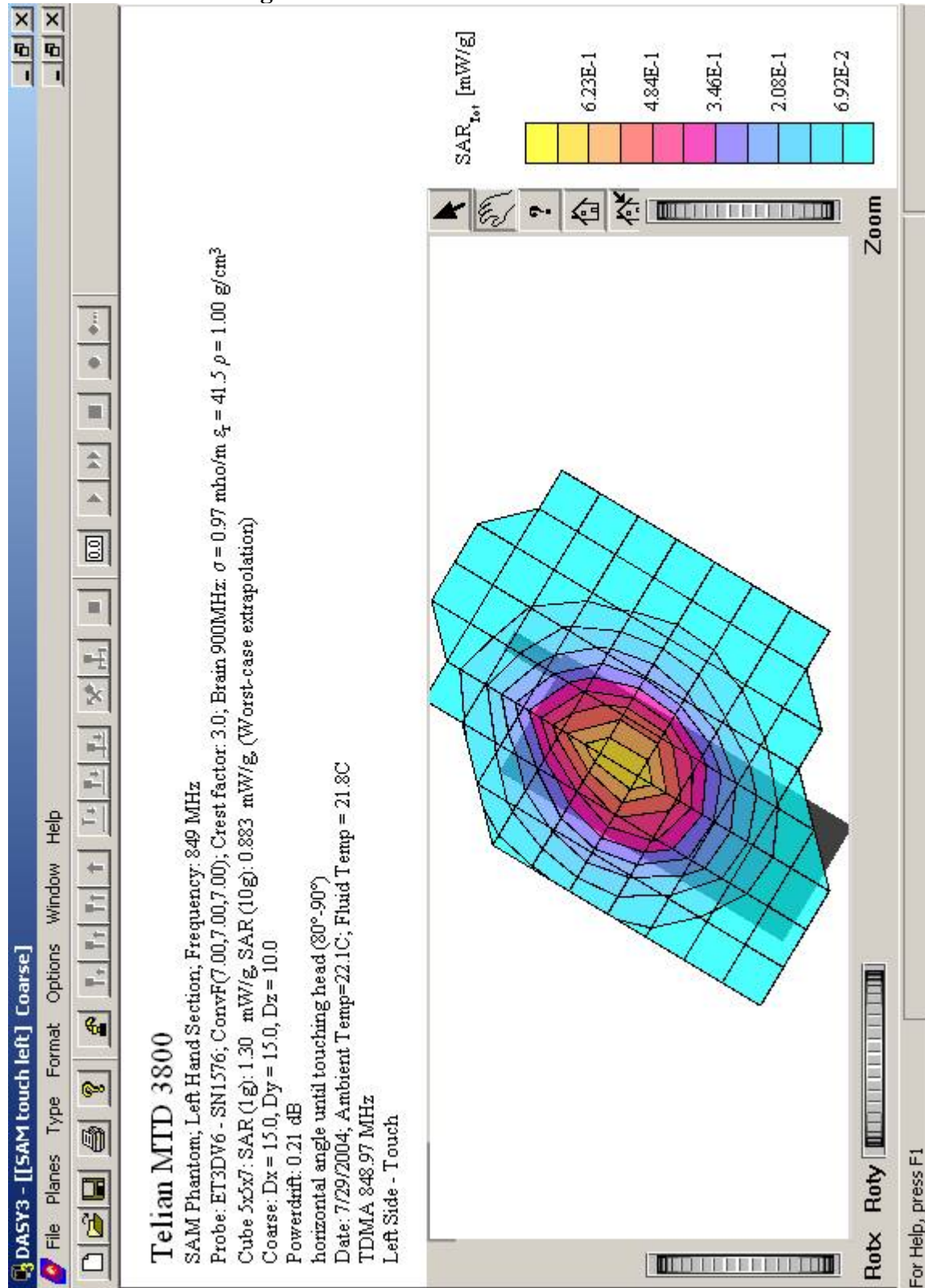


Figure 4: TDMA 848.97 Left Cheek Tilt

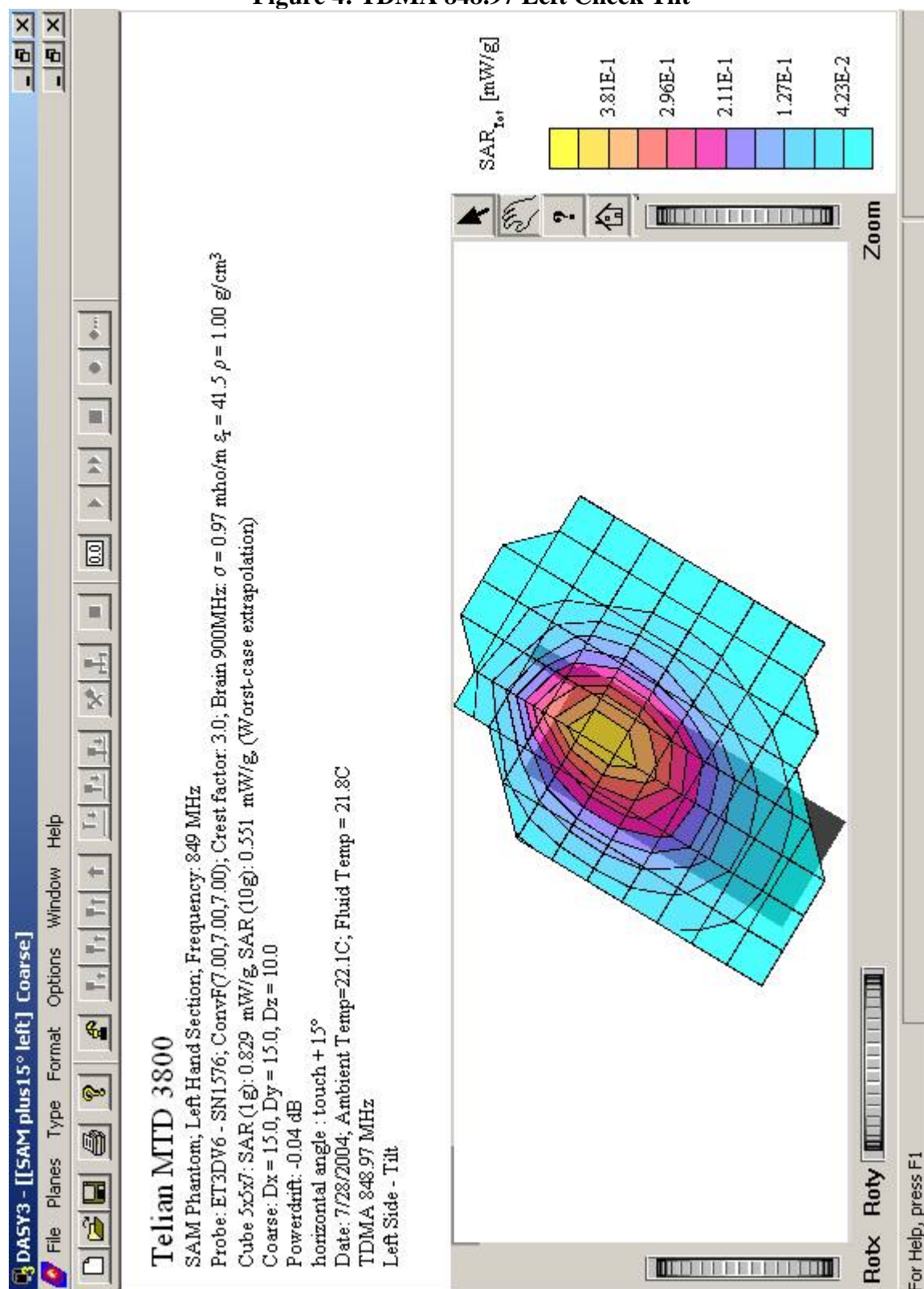


Figure 5: TDMA 848.97 Body Front Side

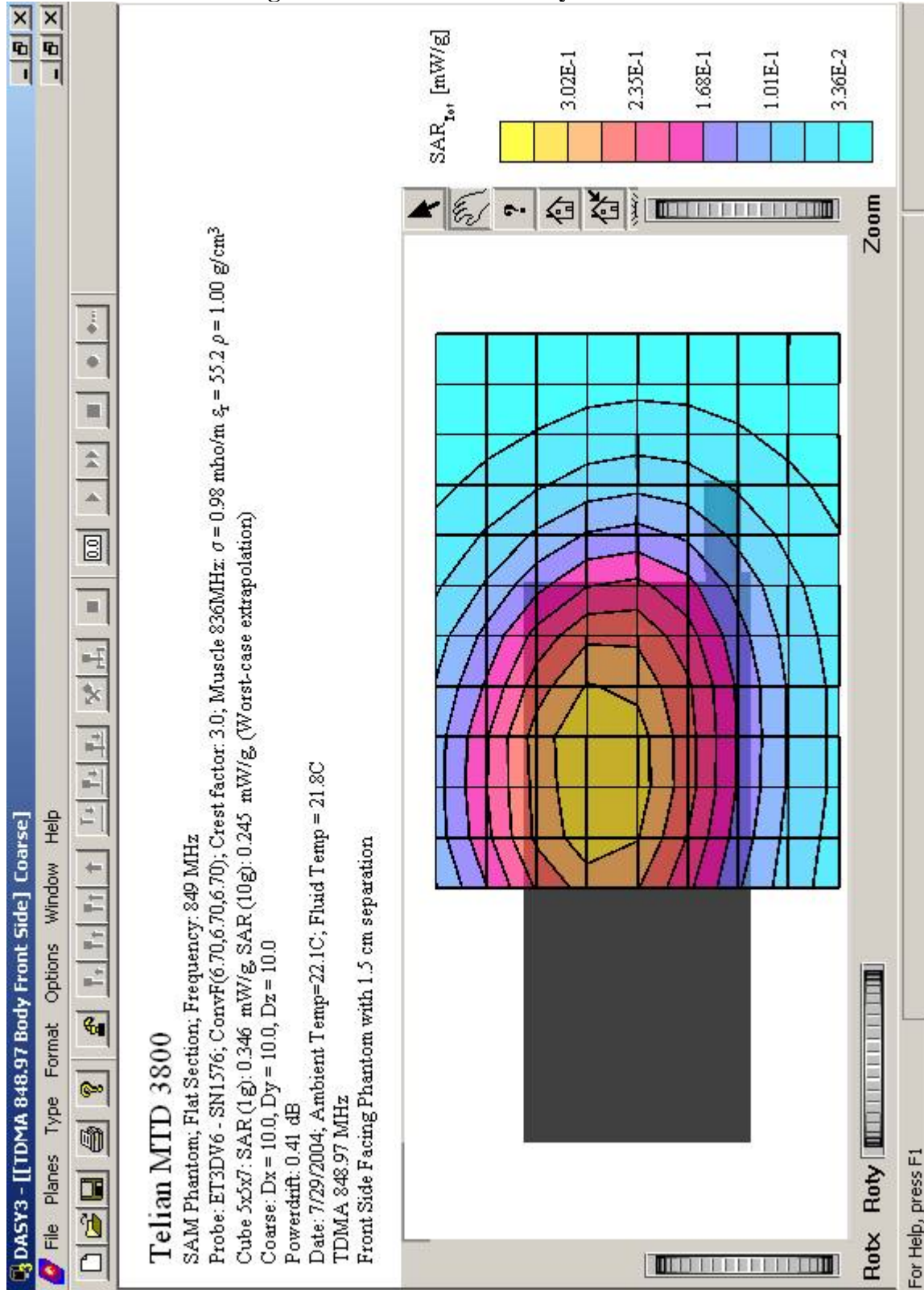


Figure 6: TDMA 848.97 Body Back Side

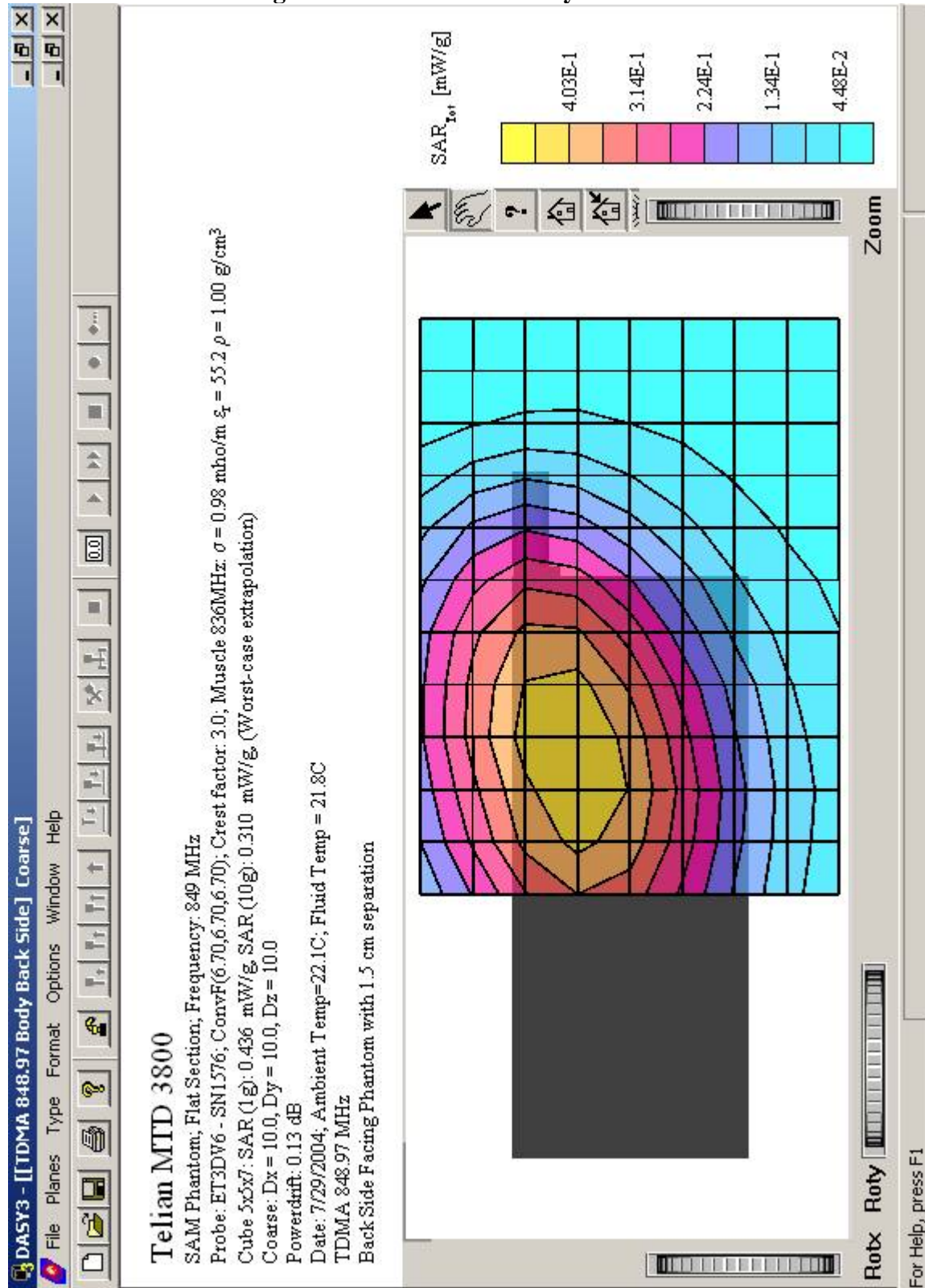


Figure 7: TDMA 836.52 Right Cheek Touch

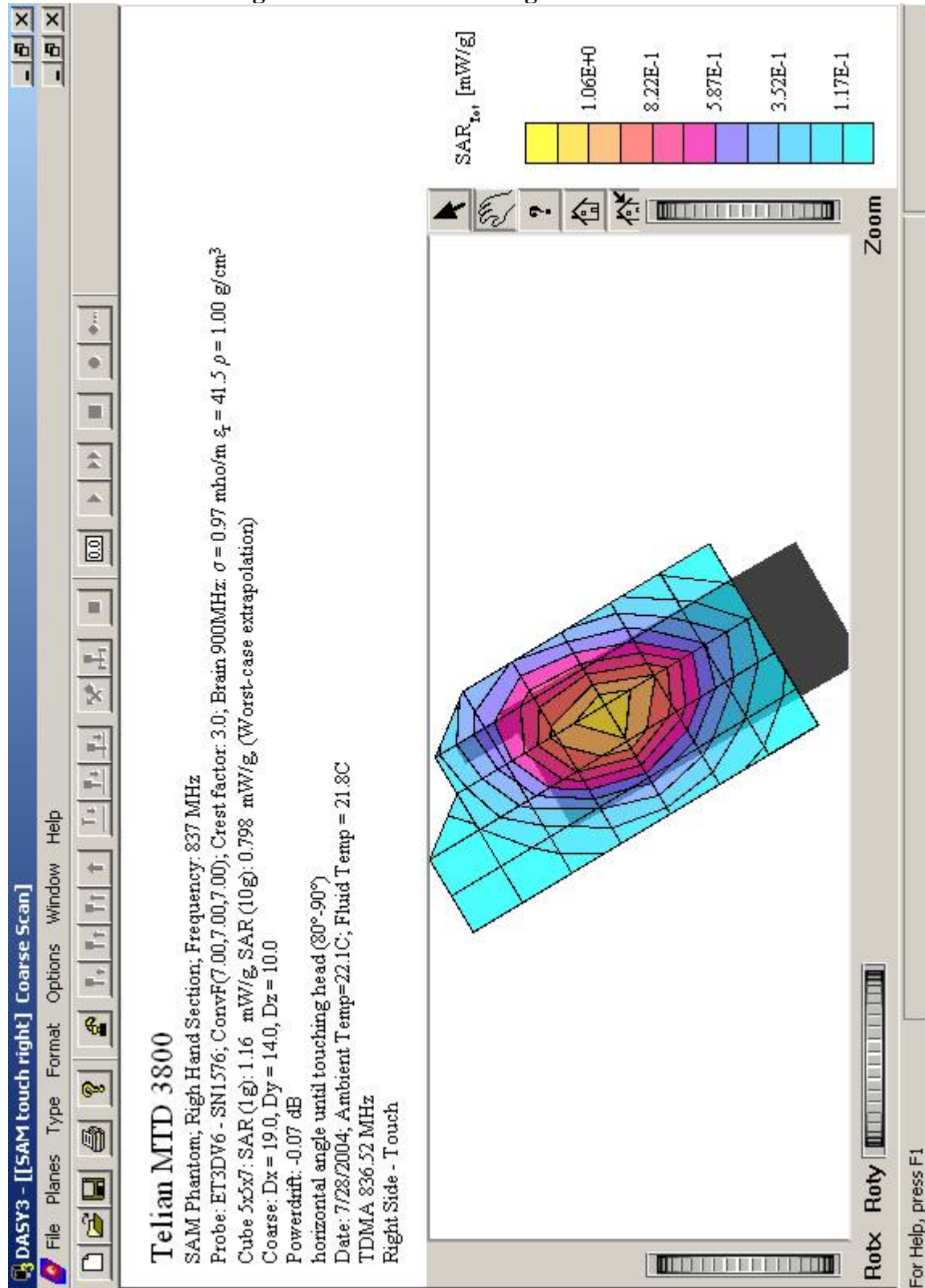


Figure 8: TDMA 836.52 Right Cheek Tilt

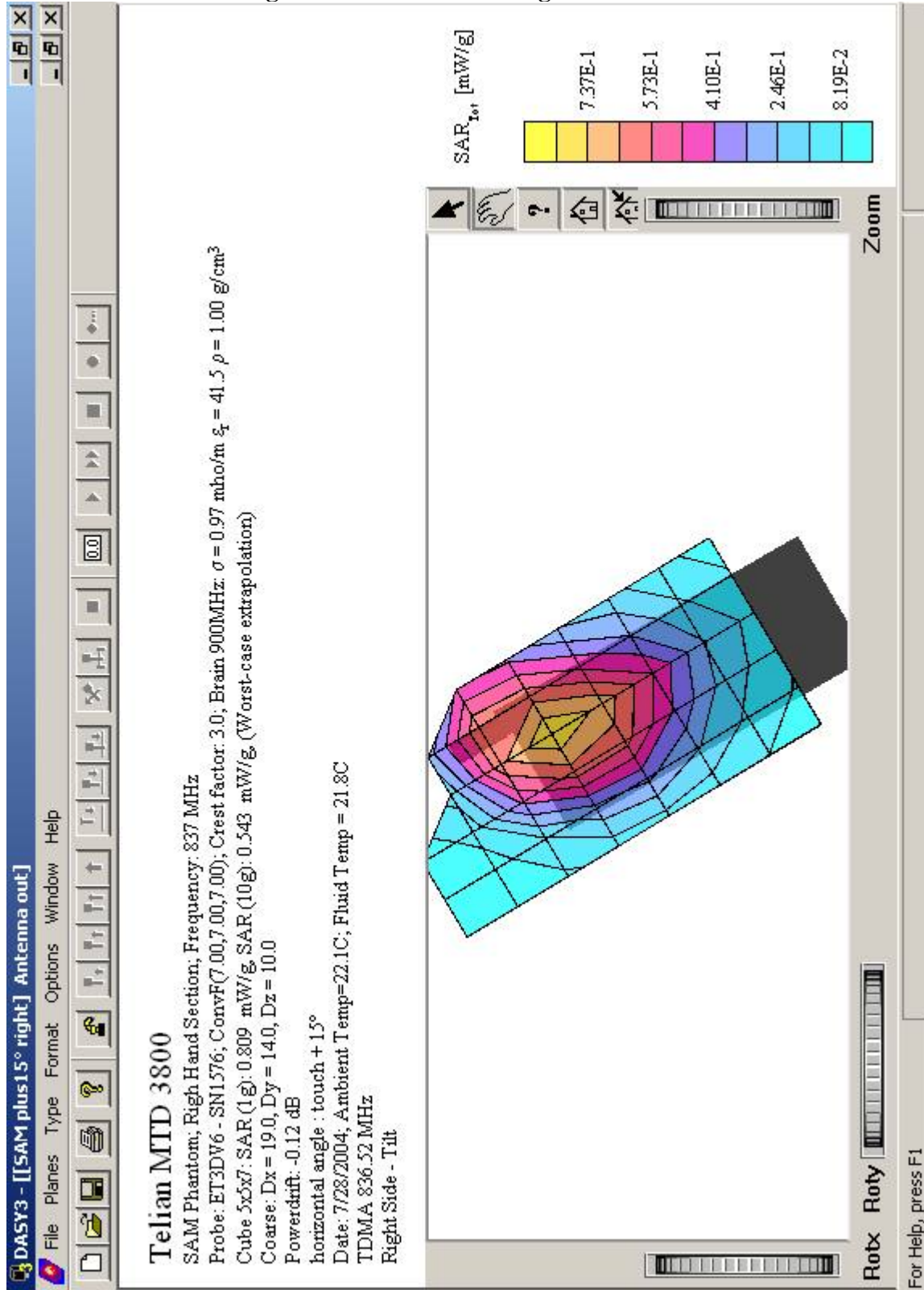


Figure 9: TDMA 836.52 Left Cheek Touch

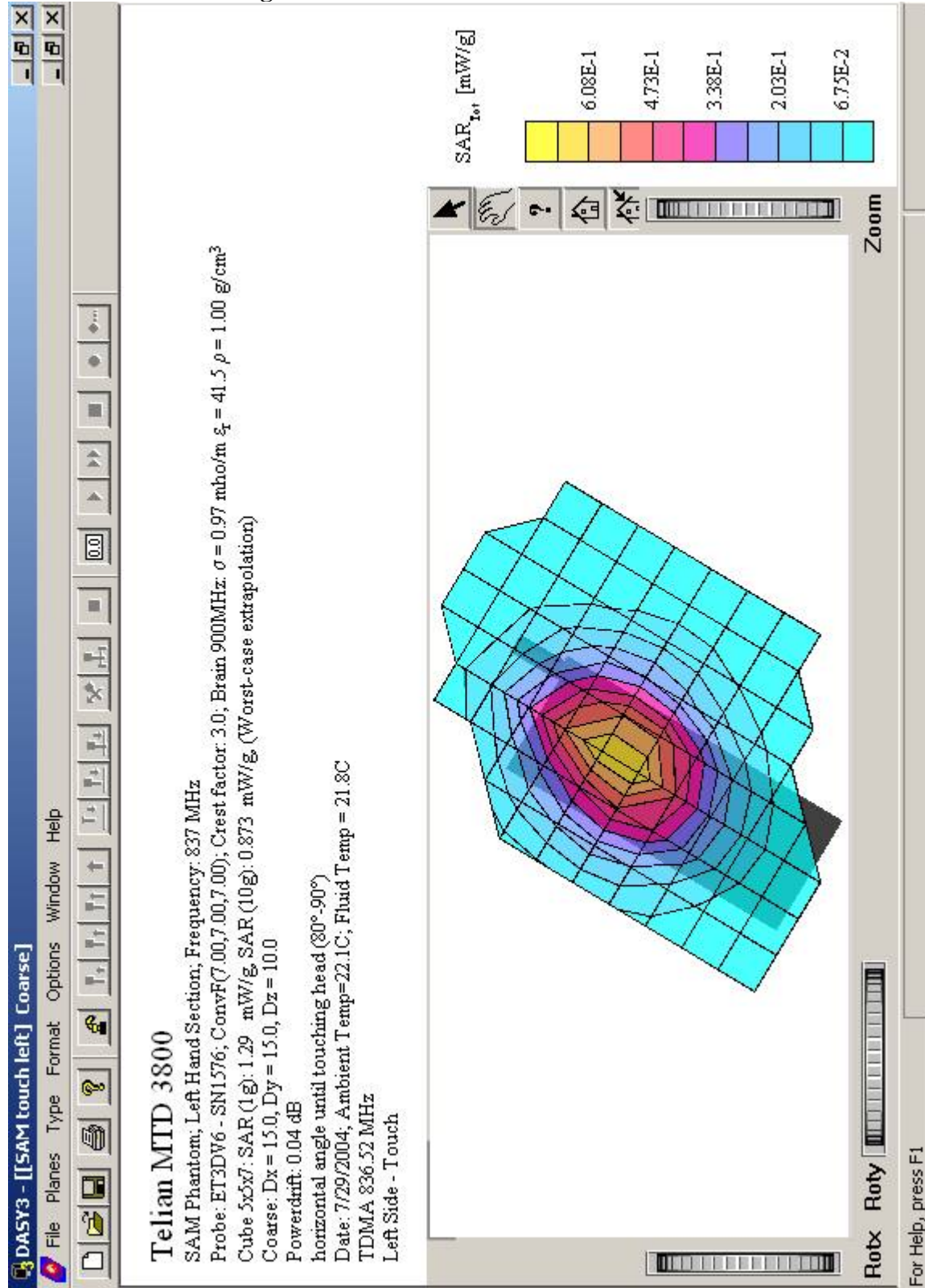


Figure 10: TDMA 836.52 Left Cheek Tilt

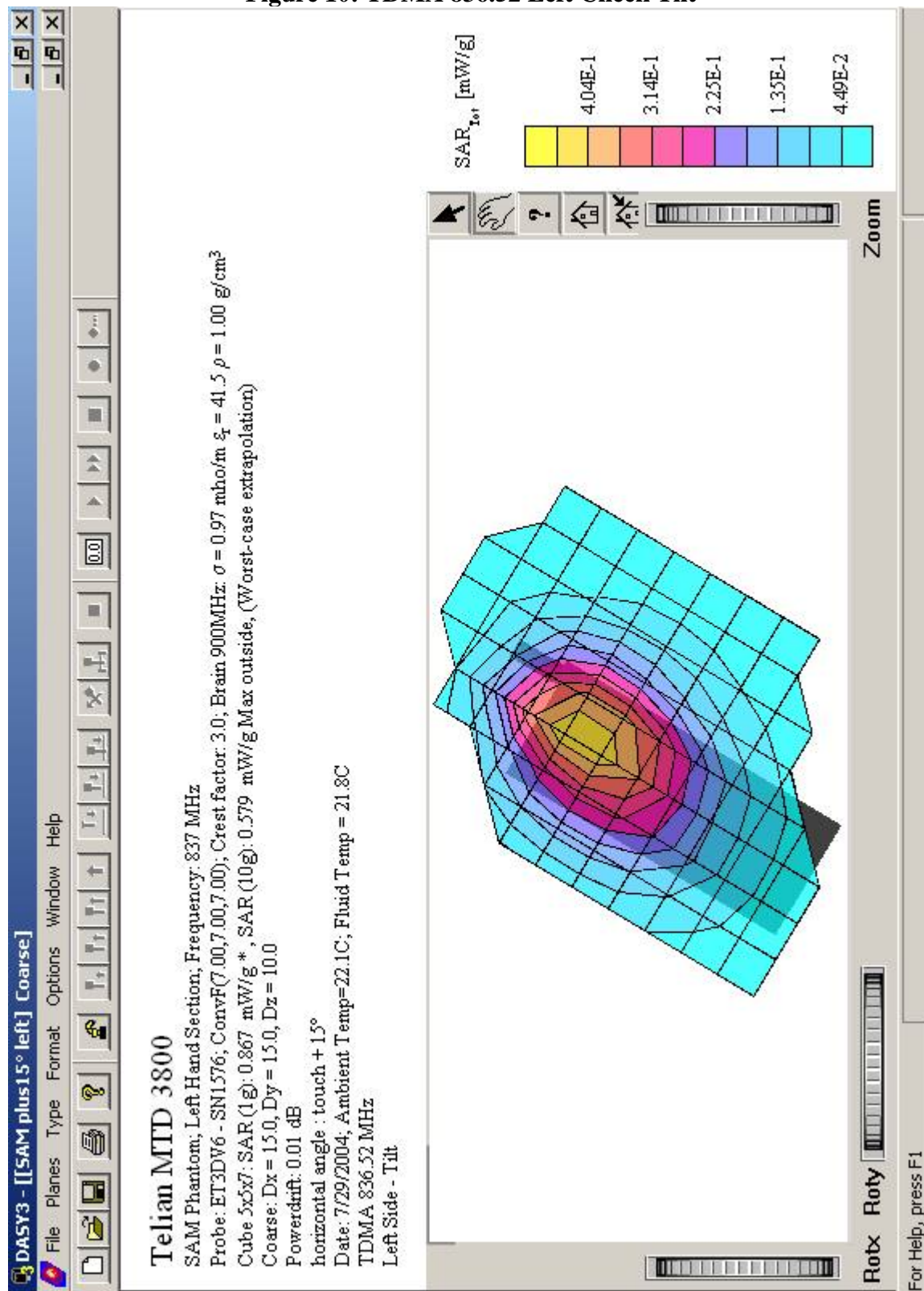


Figure 11: TDMA 836.52 Body Front Side

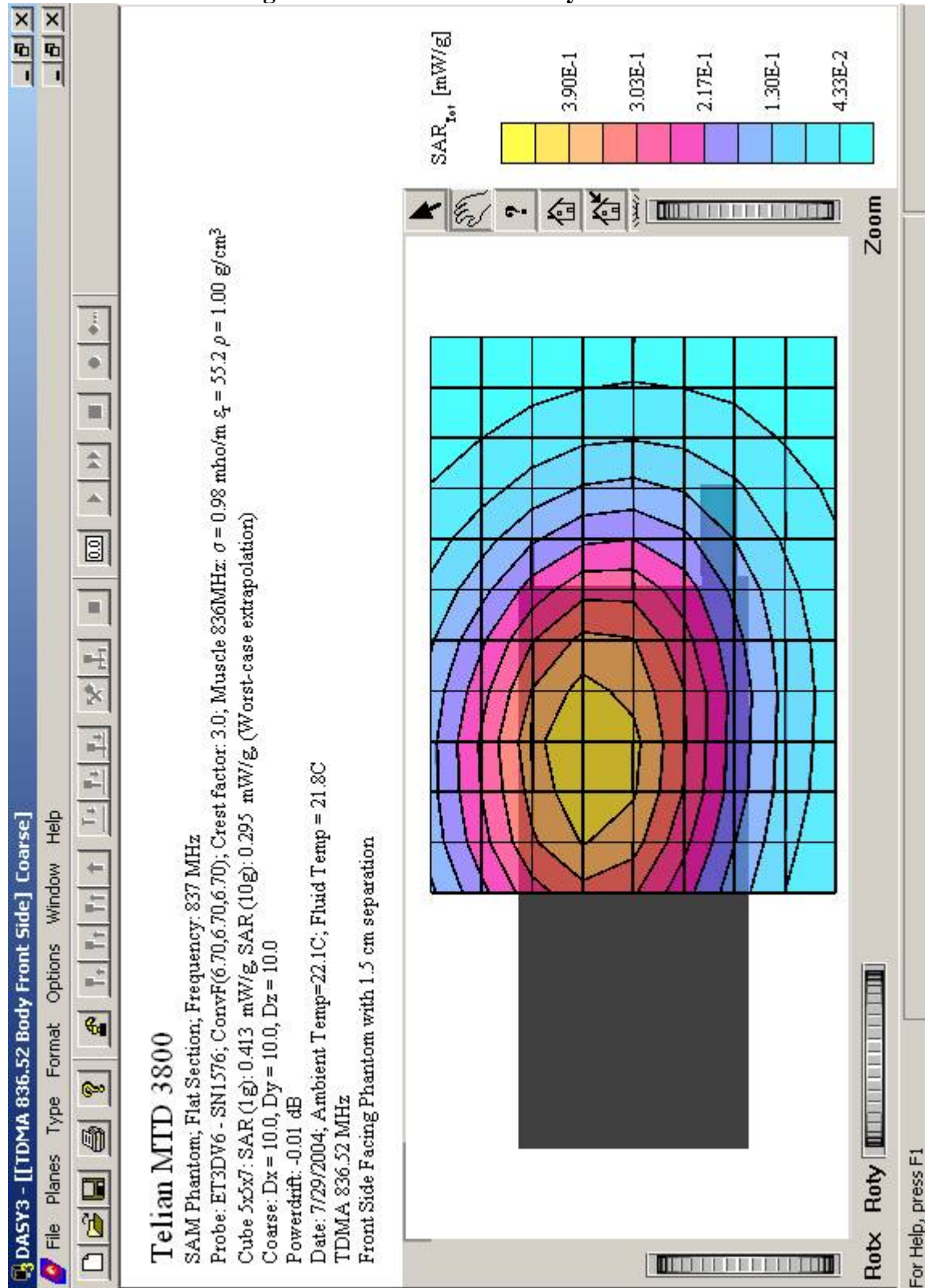


Figure 12: TDMA 836.52 Body Back Side

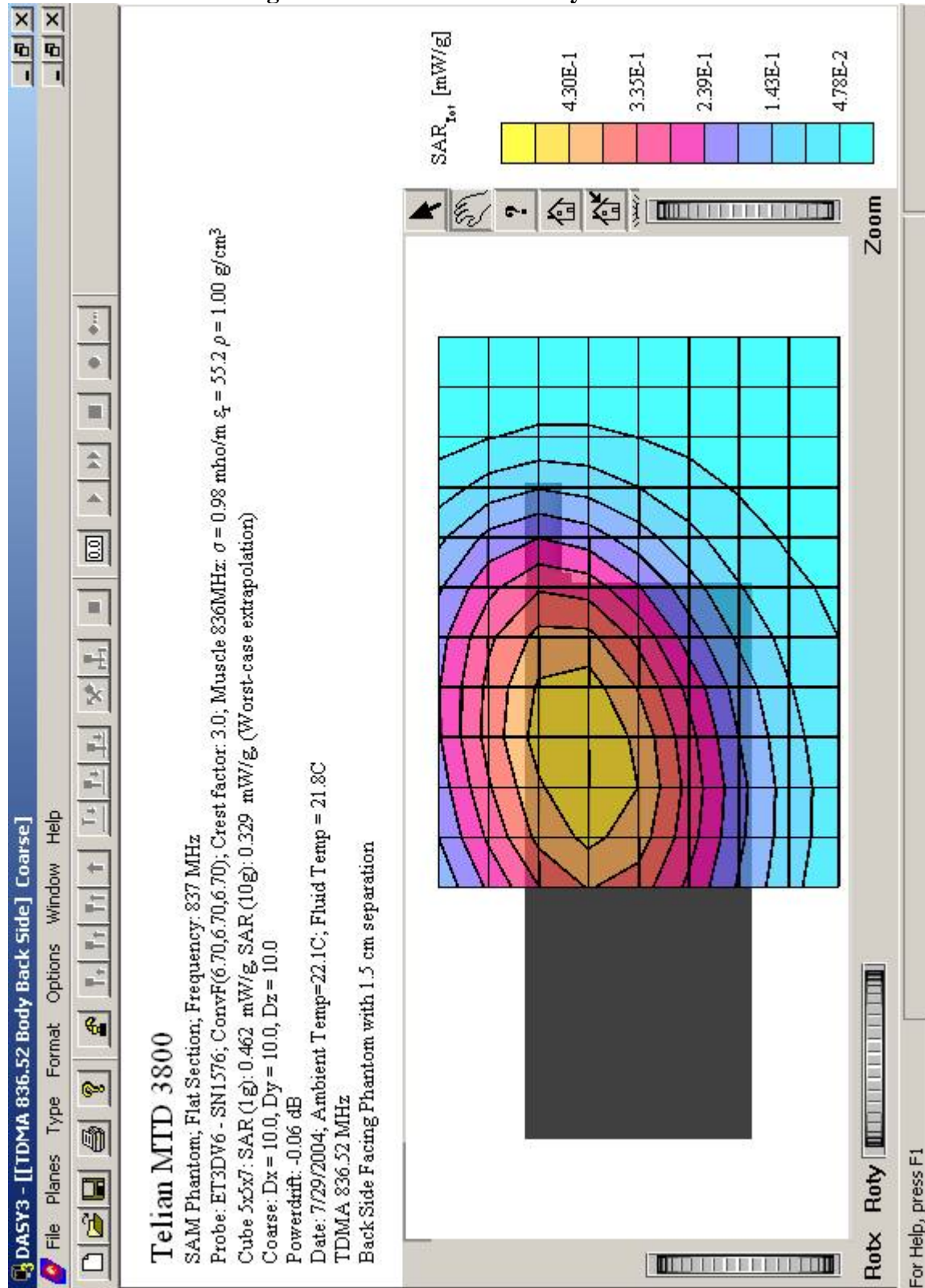


Figure 13: TDMA 824.04 Right Cheek Touch

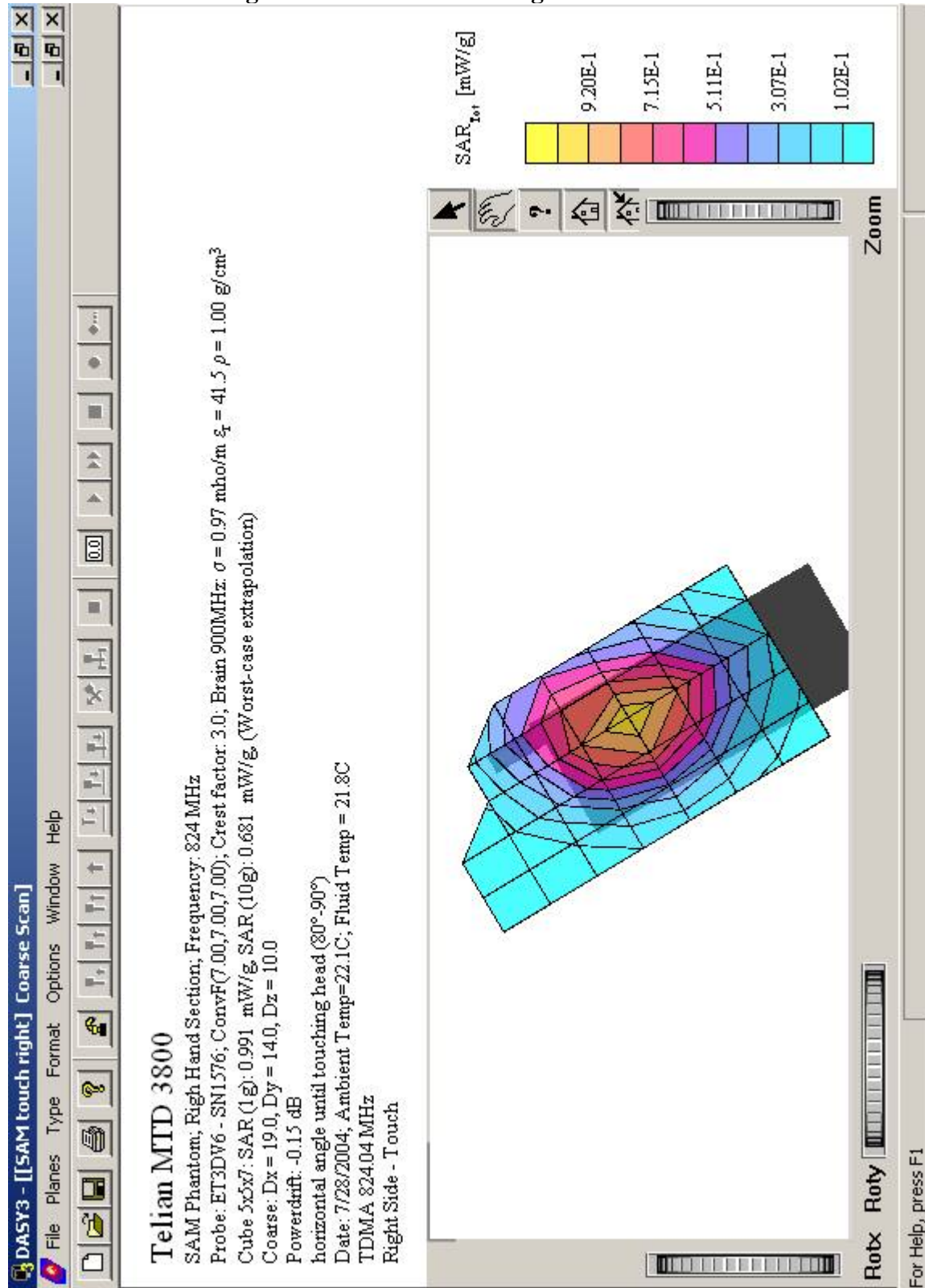


Figure 14: TDMA 824.04 Right Cheek Tilt

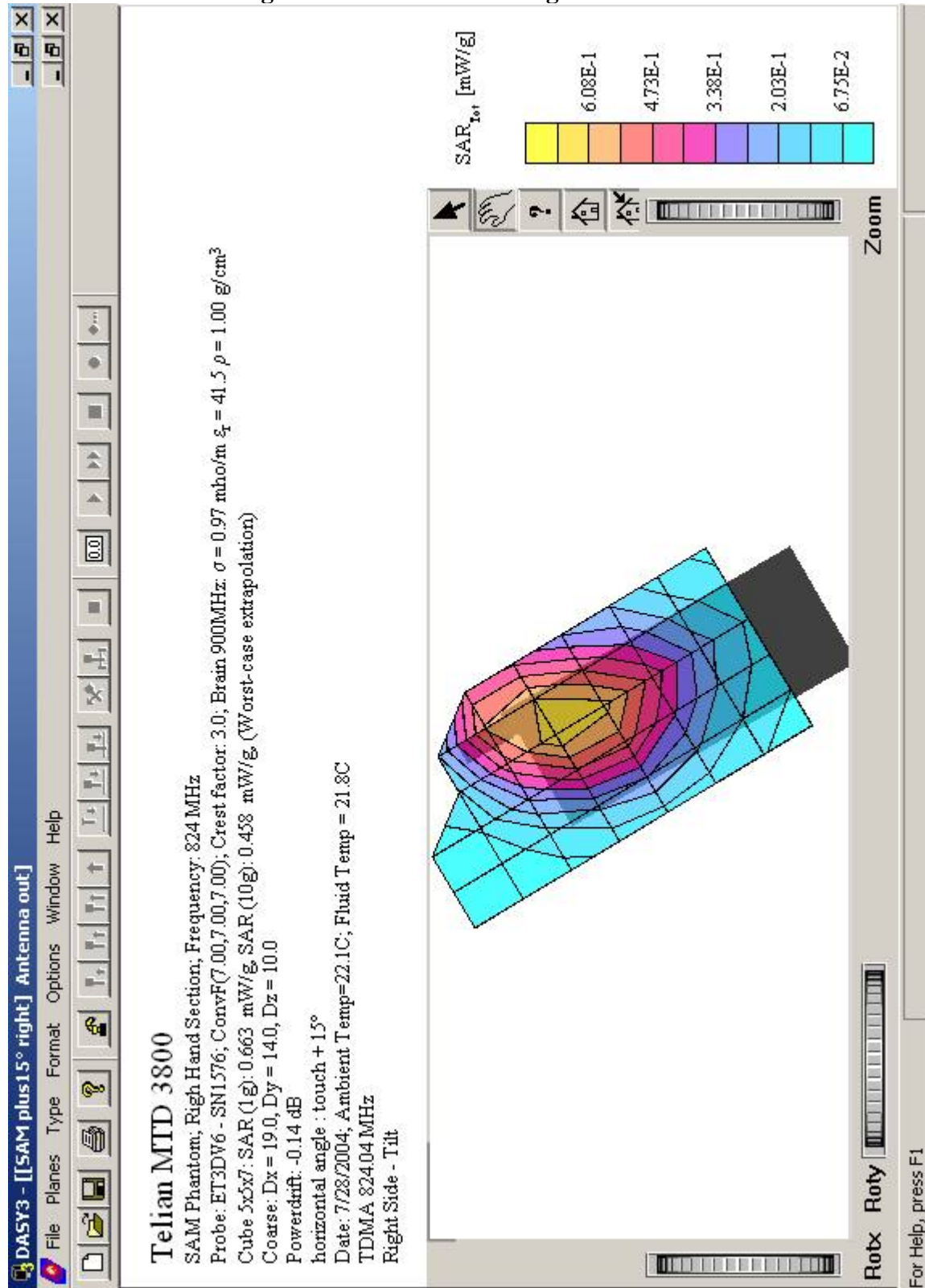


Figure 15: TDMA 824.04 Left Cheek Touch

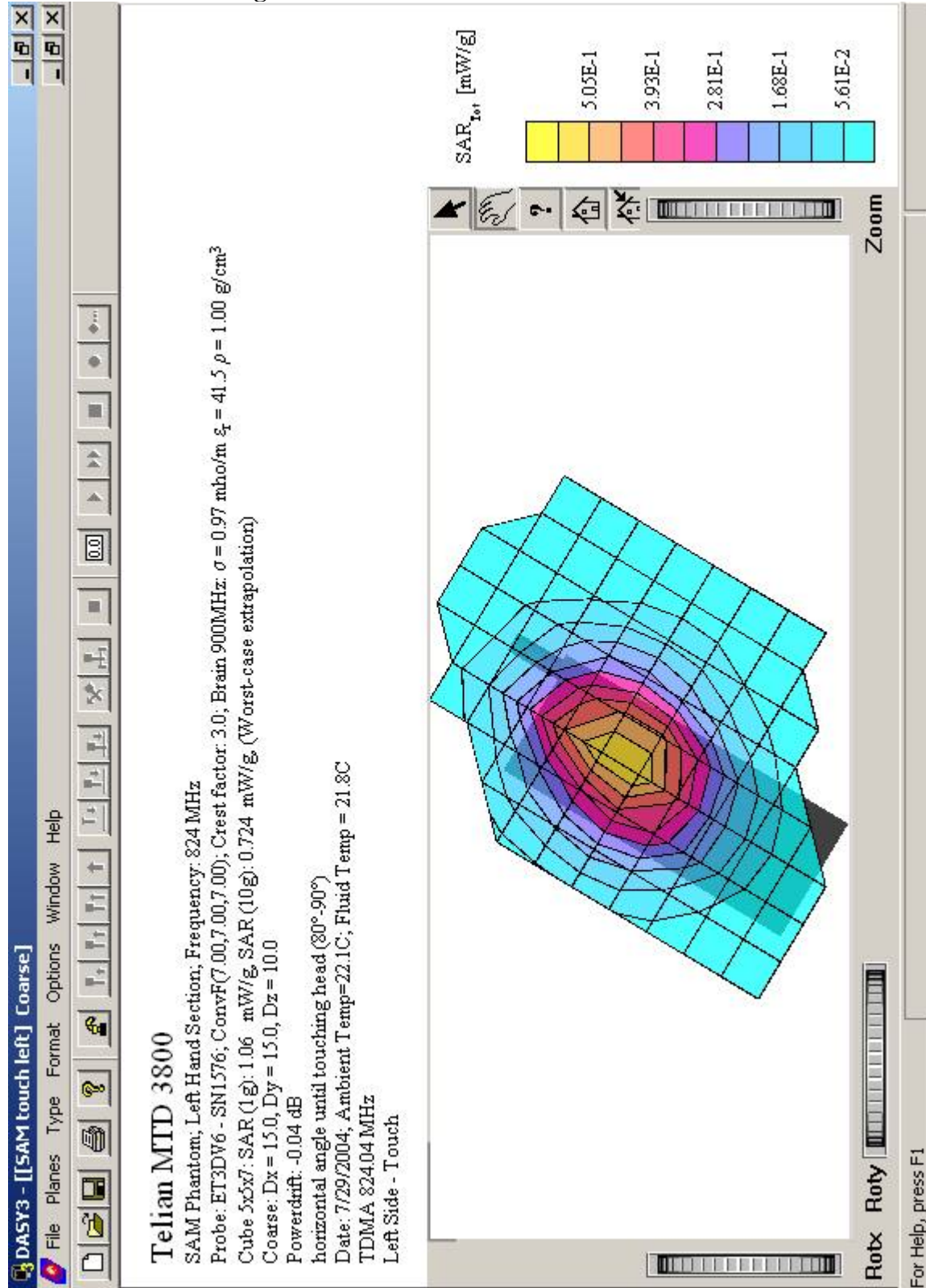


Figure 16: TDMA 824.04 Left Cheek Tilt

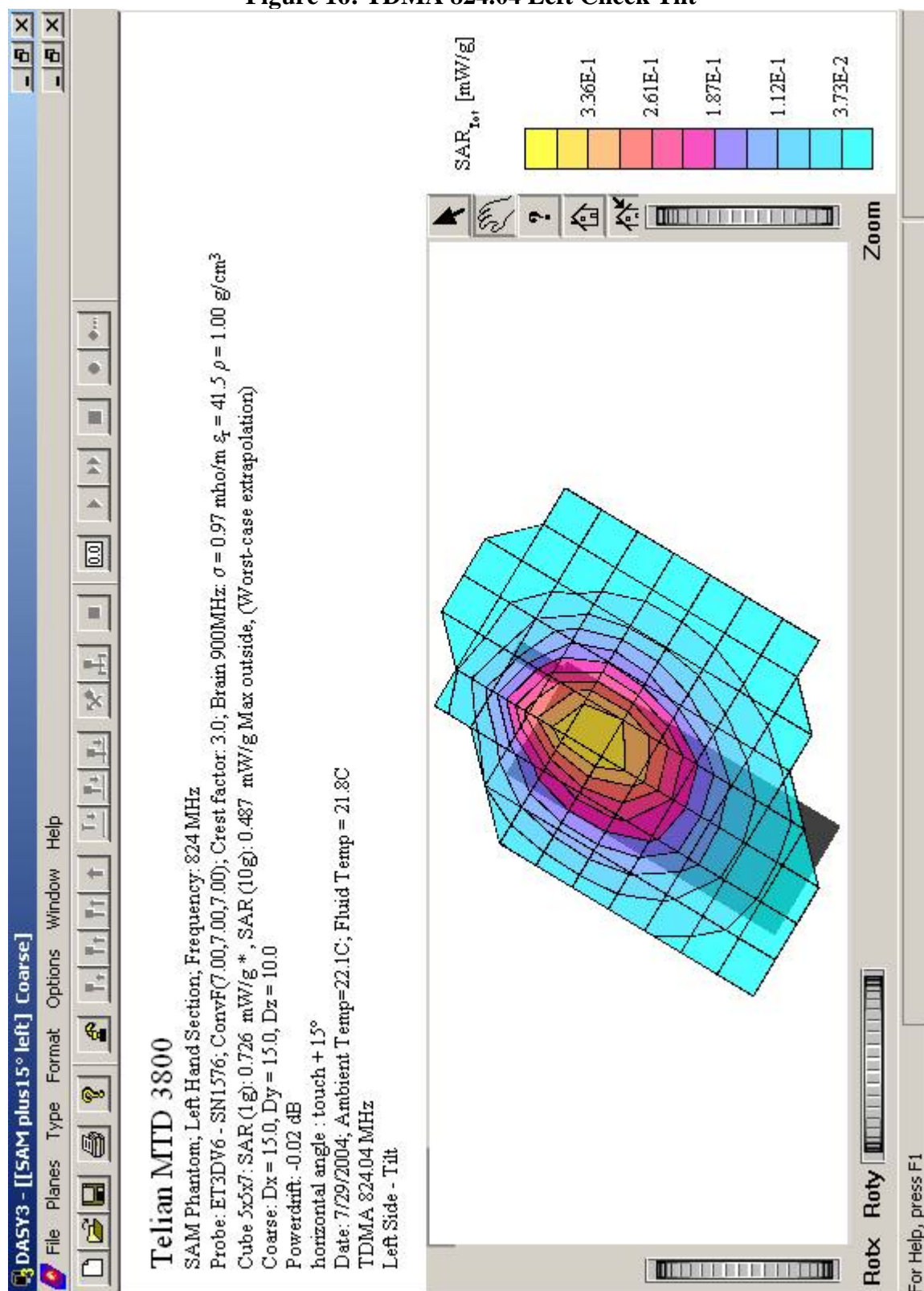


Figure 17: TDMA 824.04 Body Front Side

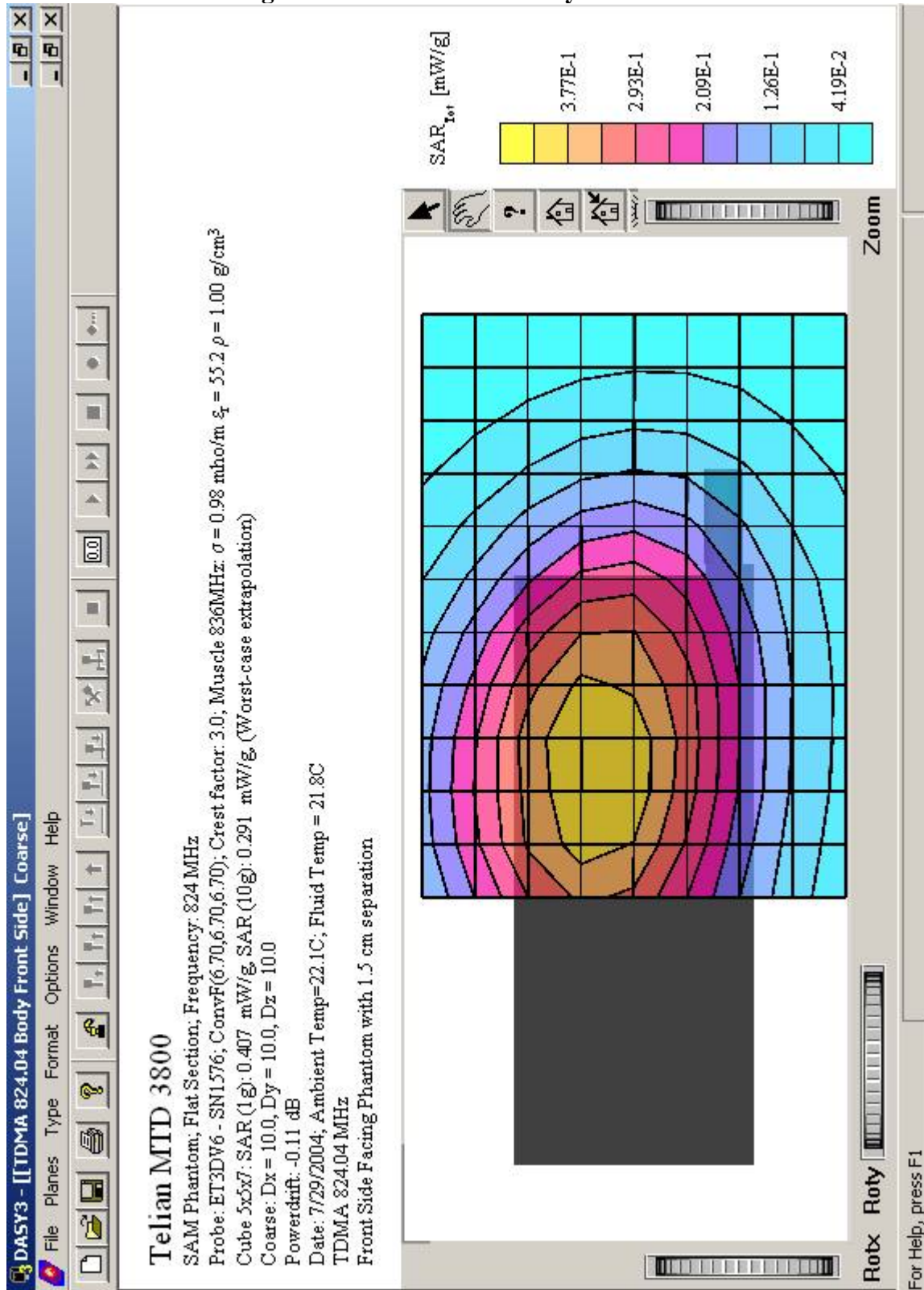


Figure 18: TDMA 824.04 Body Back Side

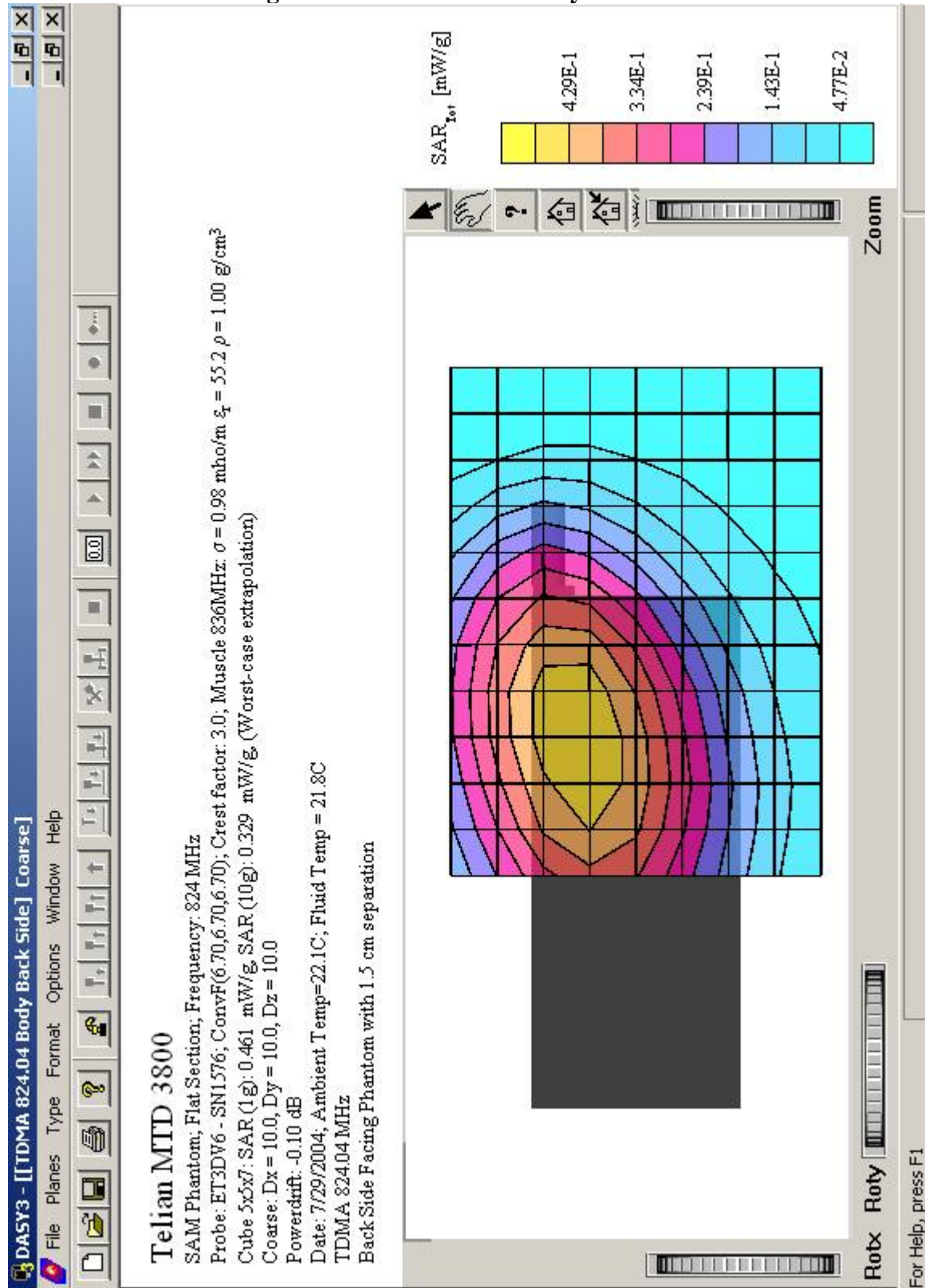


Figure 19: AMPS 848.97 Right Cheek Touch

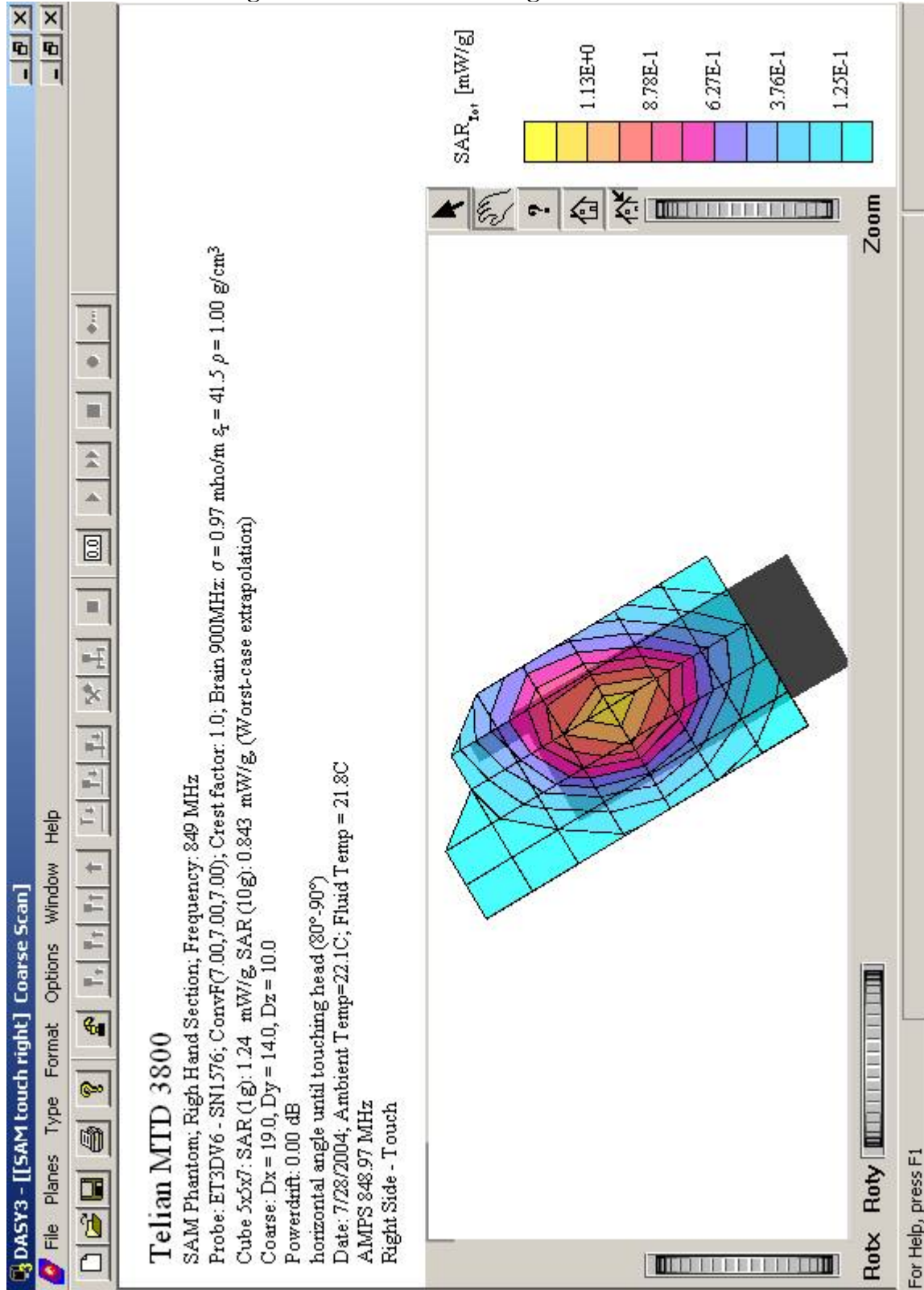


Figure 20: AMPS 848.97 Right Cheek Tilt

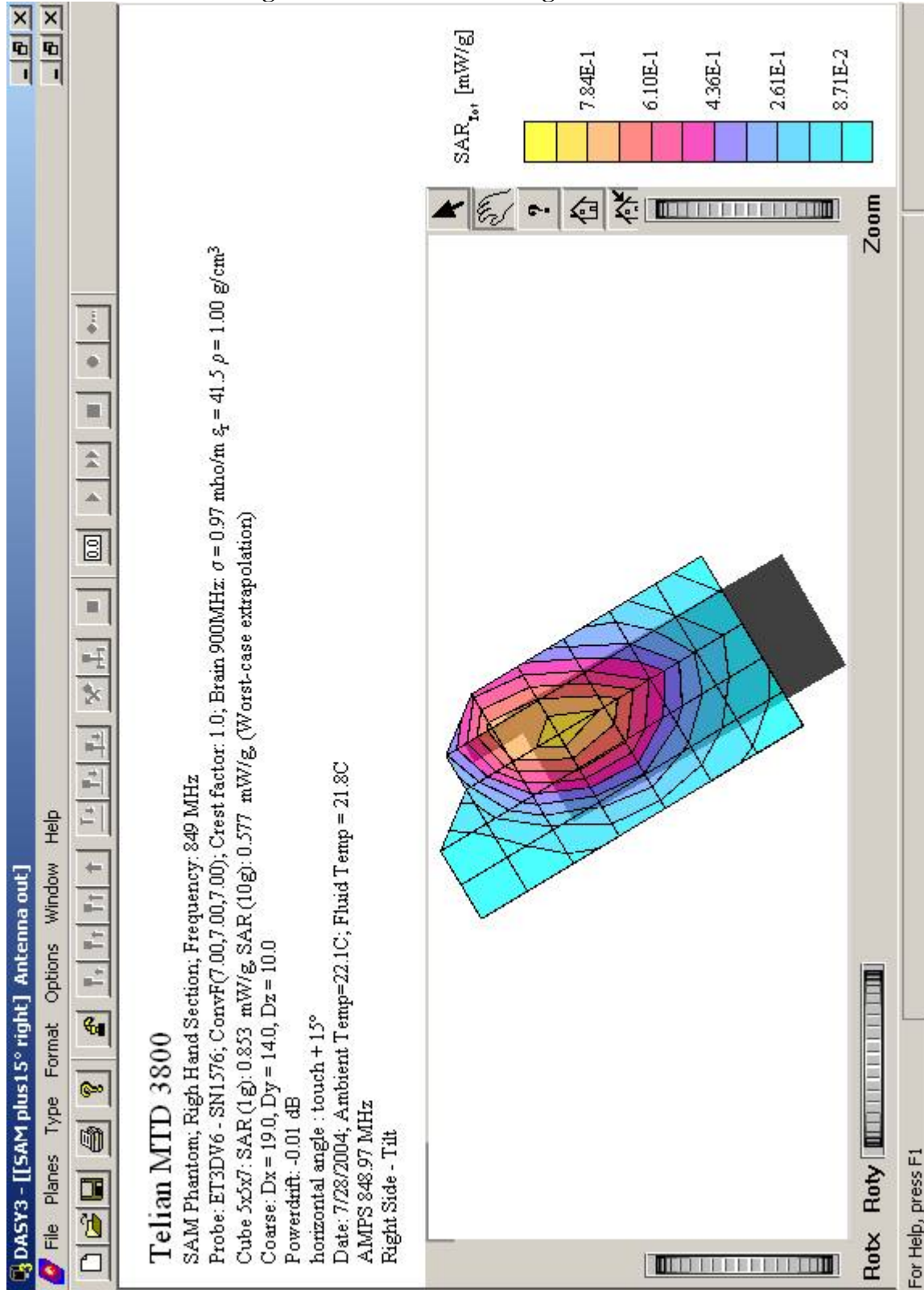


Figure 21: AMPS 848.97 Left Cheek Touch

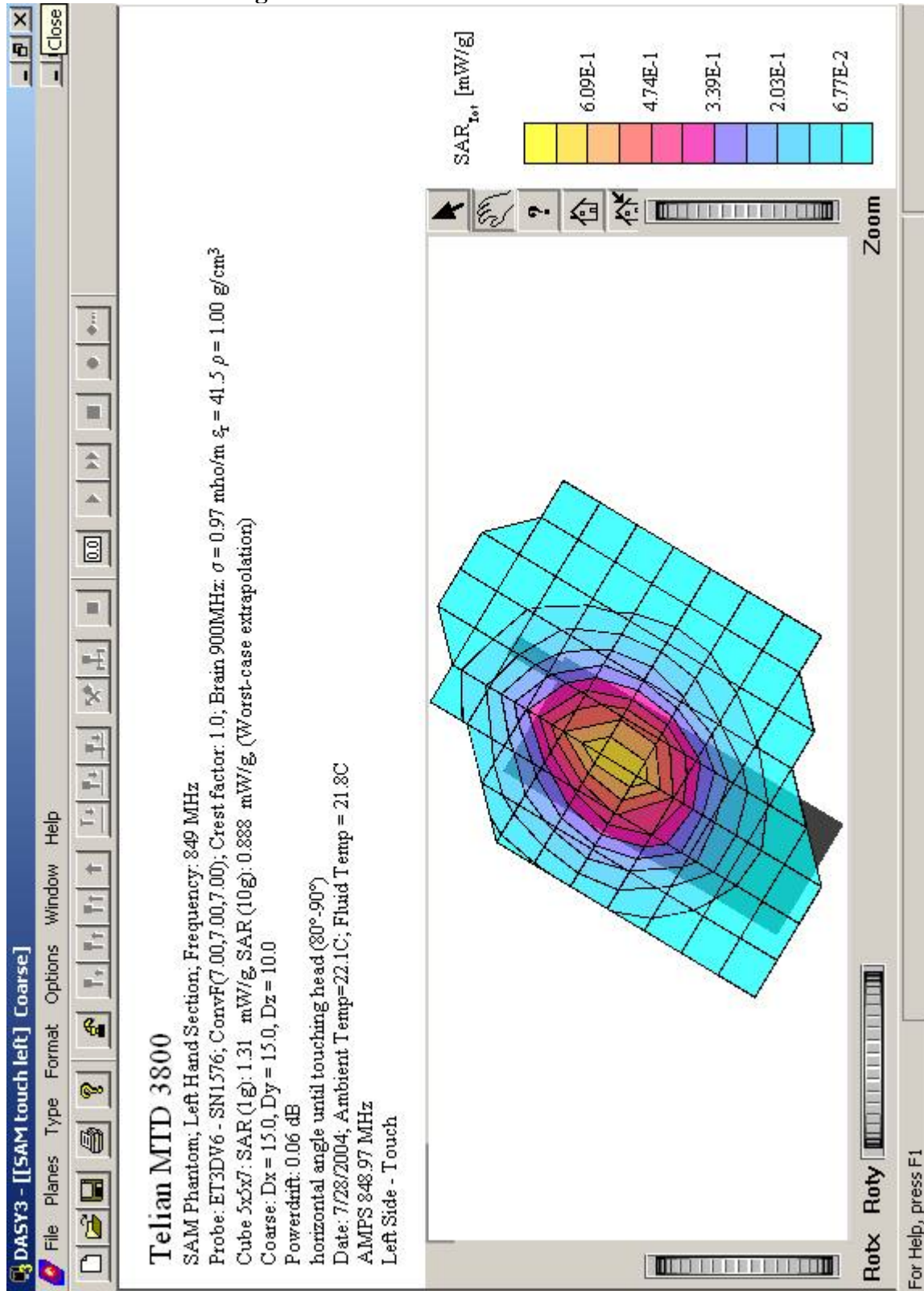


Figure 22: AMPS 848.97 Left Cheek Tilt

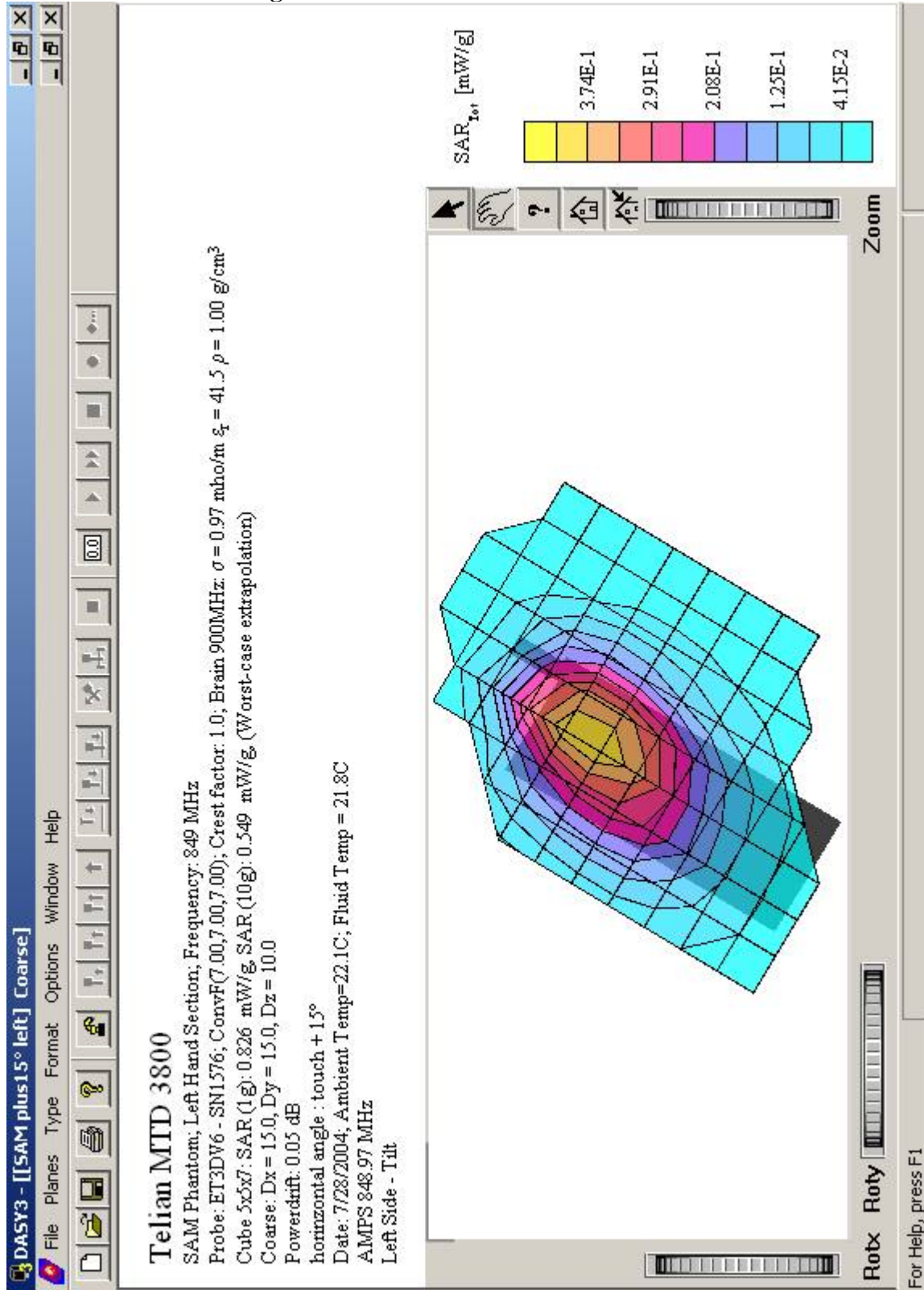


Figure 23: AMPS 848.97 Body Front Side

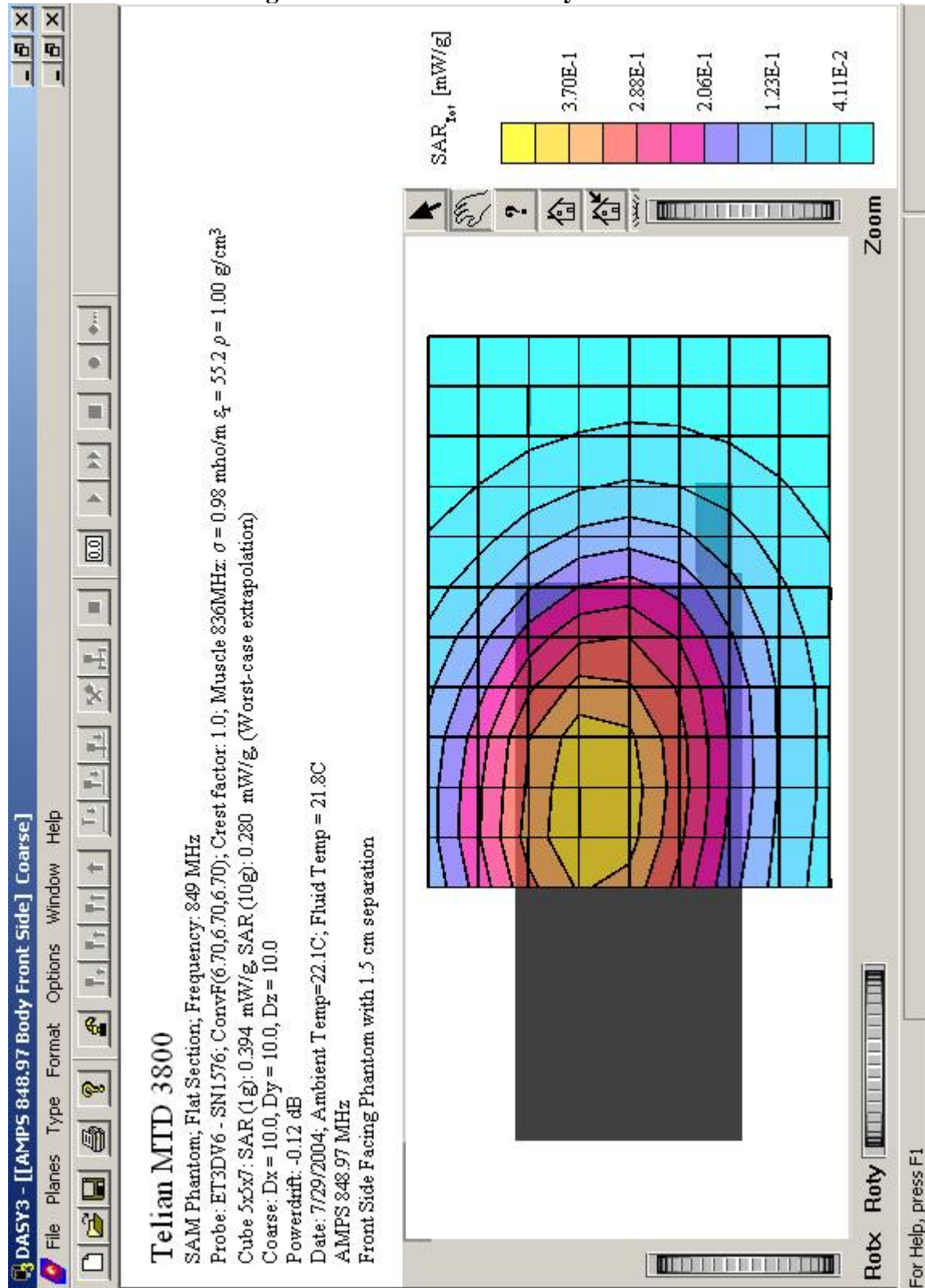


Figure 24: AMPS 848.97 Body Back Side

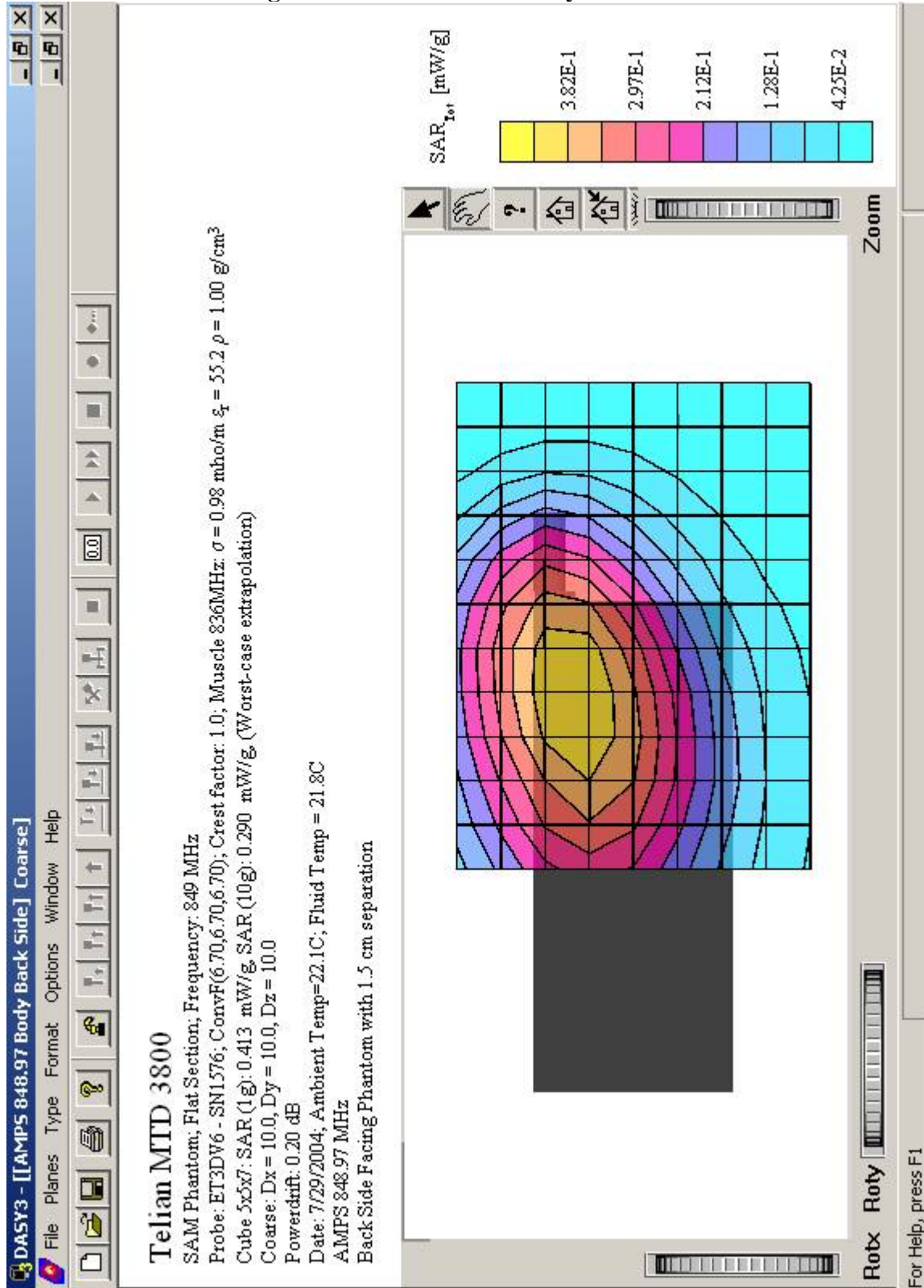


Figure 25: AMPS 836.52 Right Cheek Touch

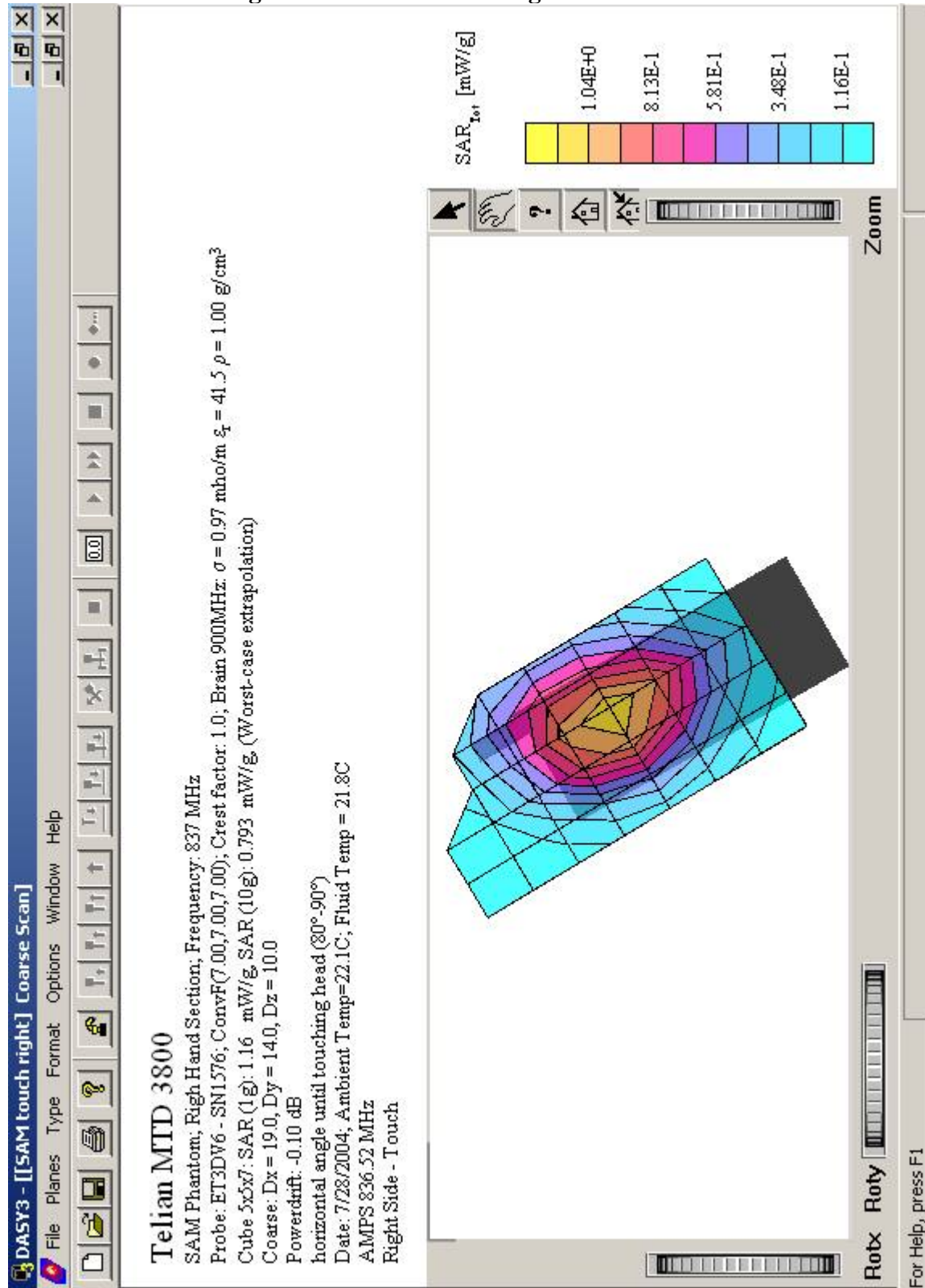


Figure 26: AMPS 836.52 Right Cheek Tilt

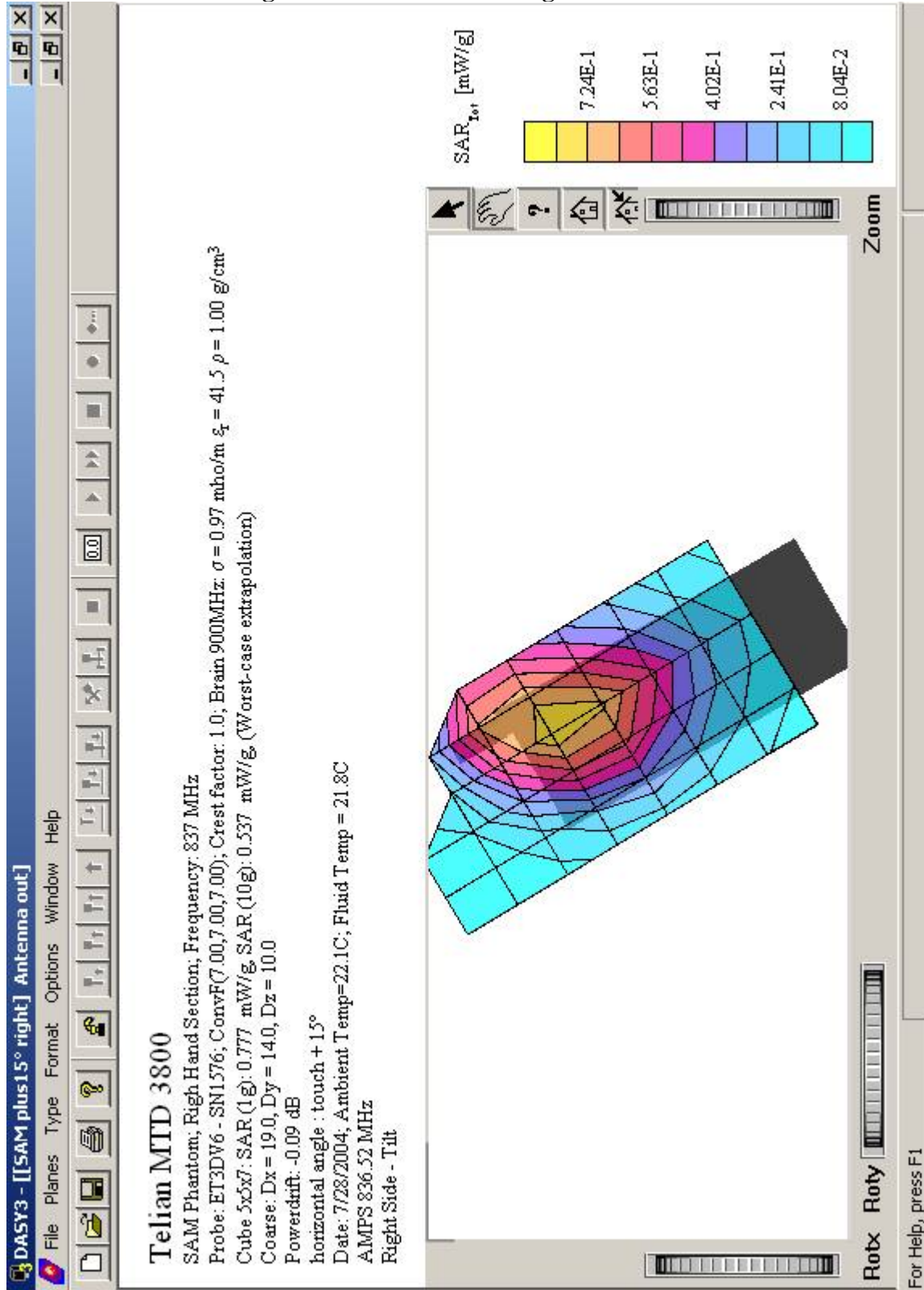


Figure 27: AMPS 836.52 Left Cheek Touch

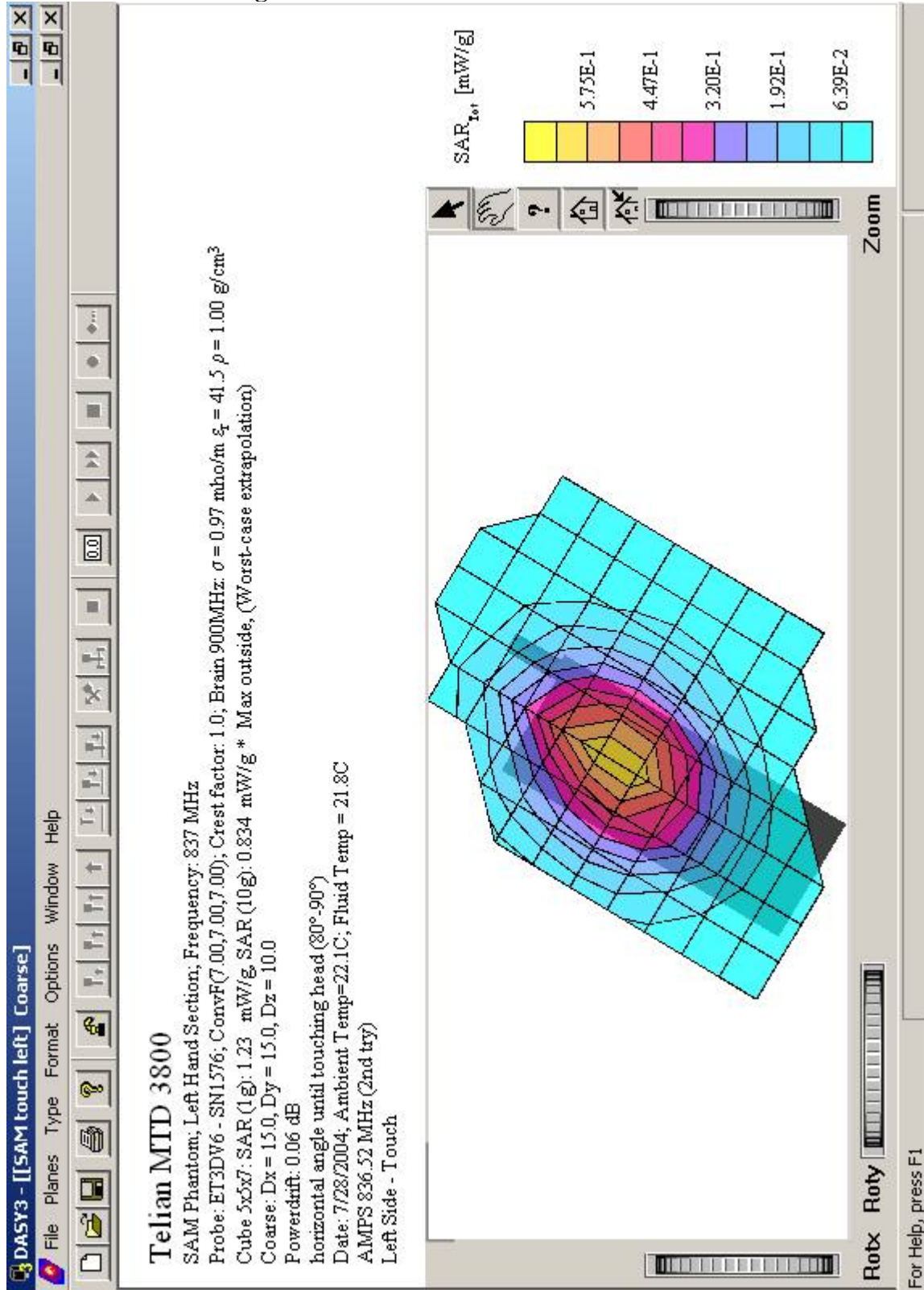


Figure 28: AMPS 836.52 Left Cheek Tilt

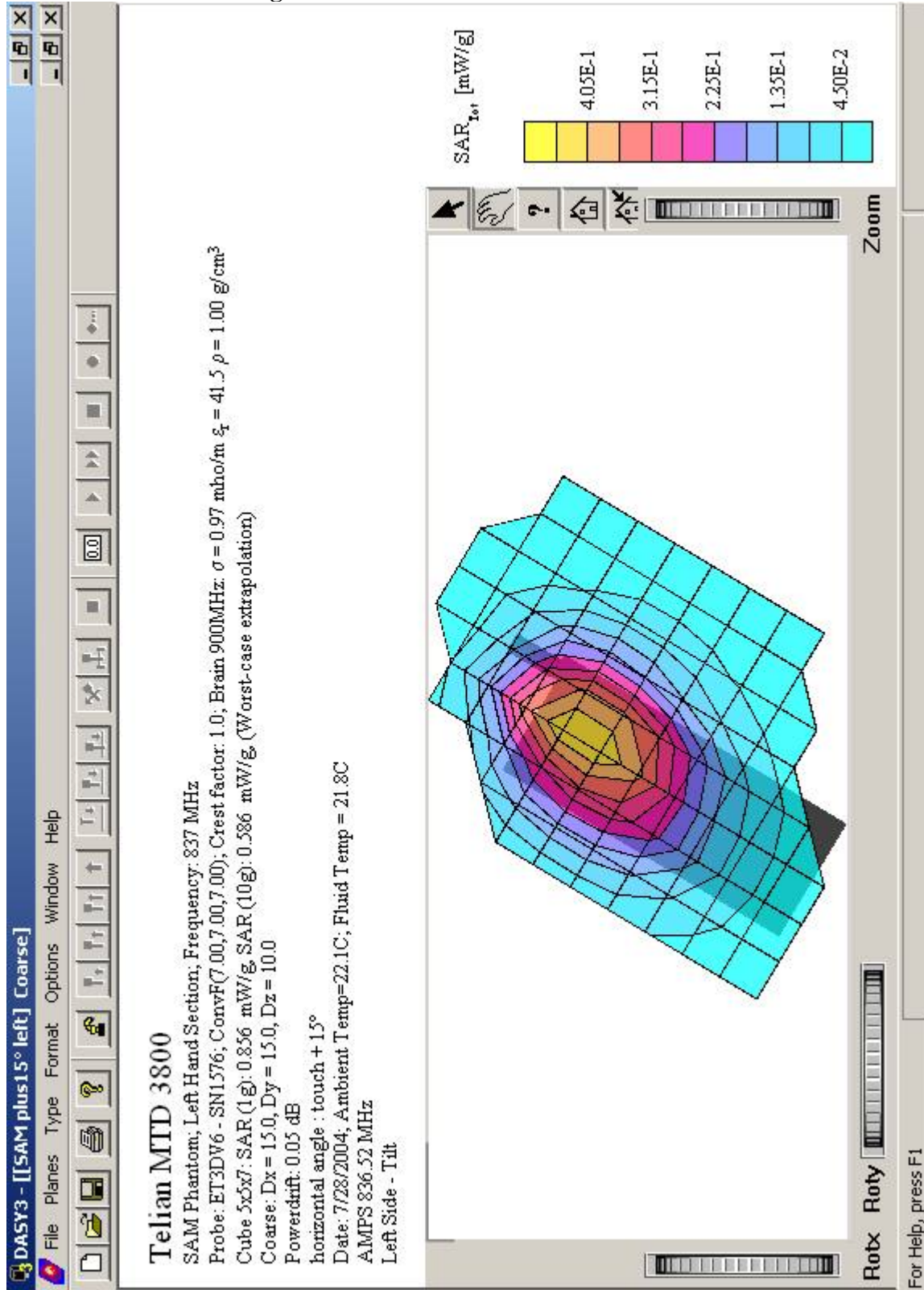


Figure 29: AMPS 836.52 Body Front Side

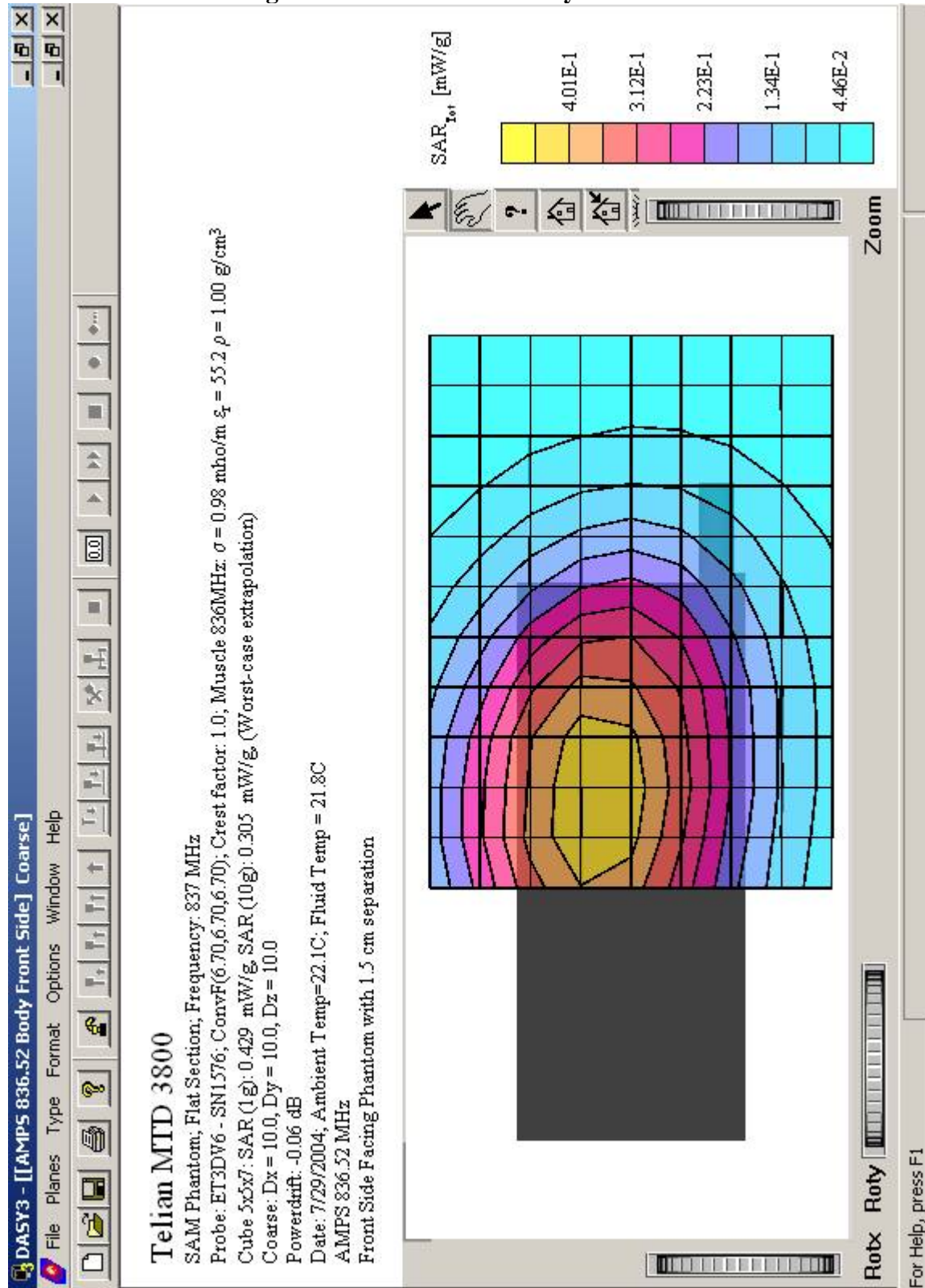


Figure 30: AMPS 836.52 Body Back Side

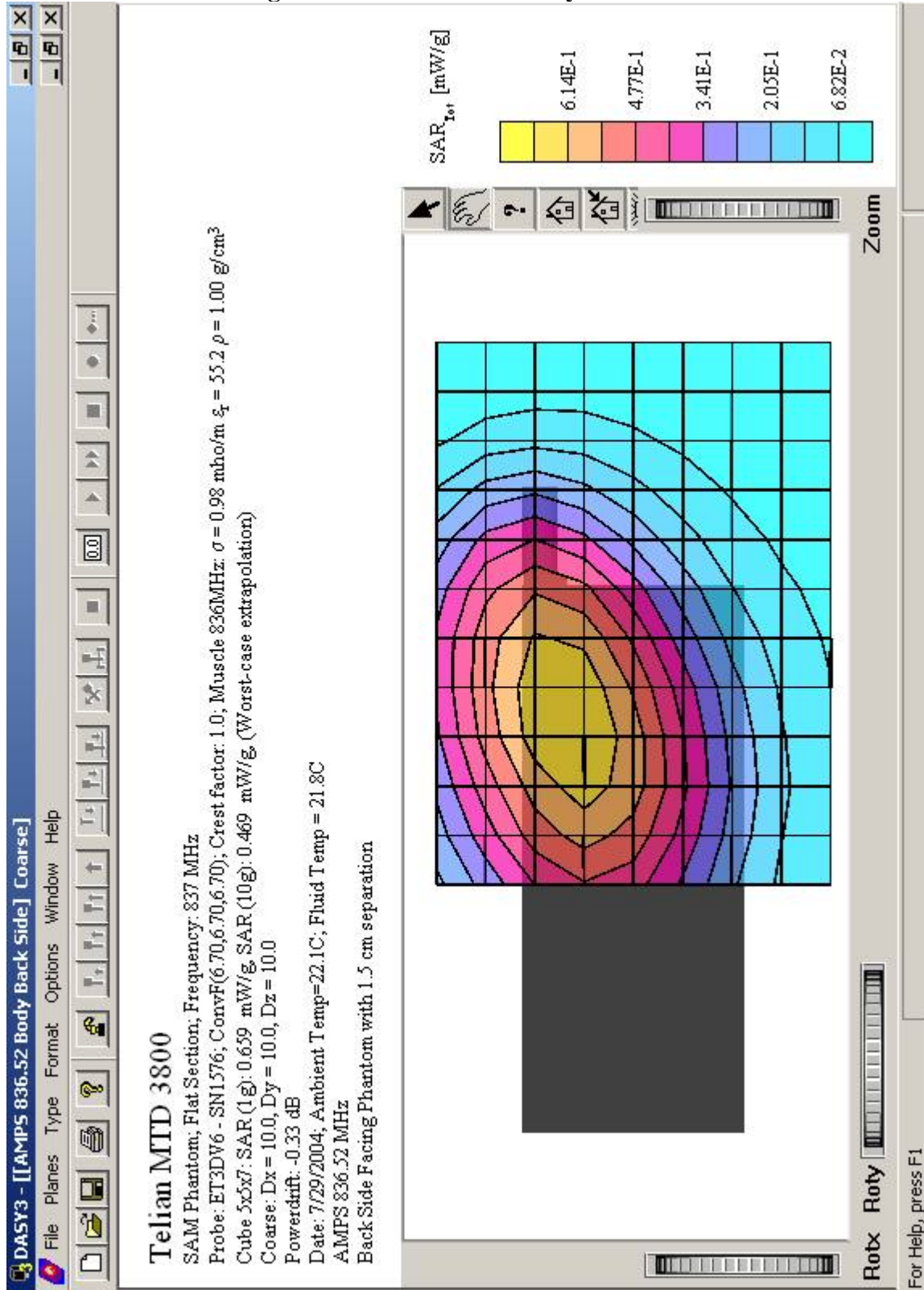


Figure 31: AMPS 824.04 Right Cheek Touch

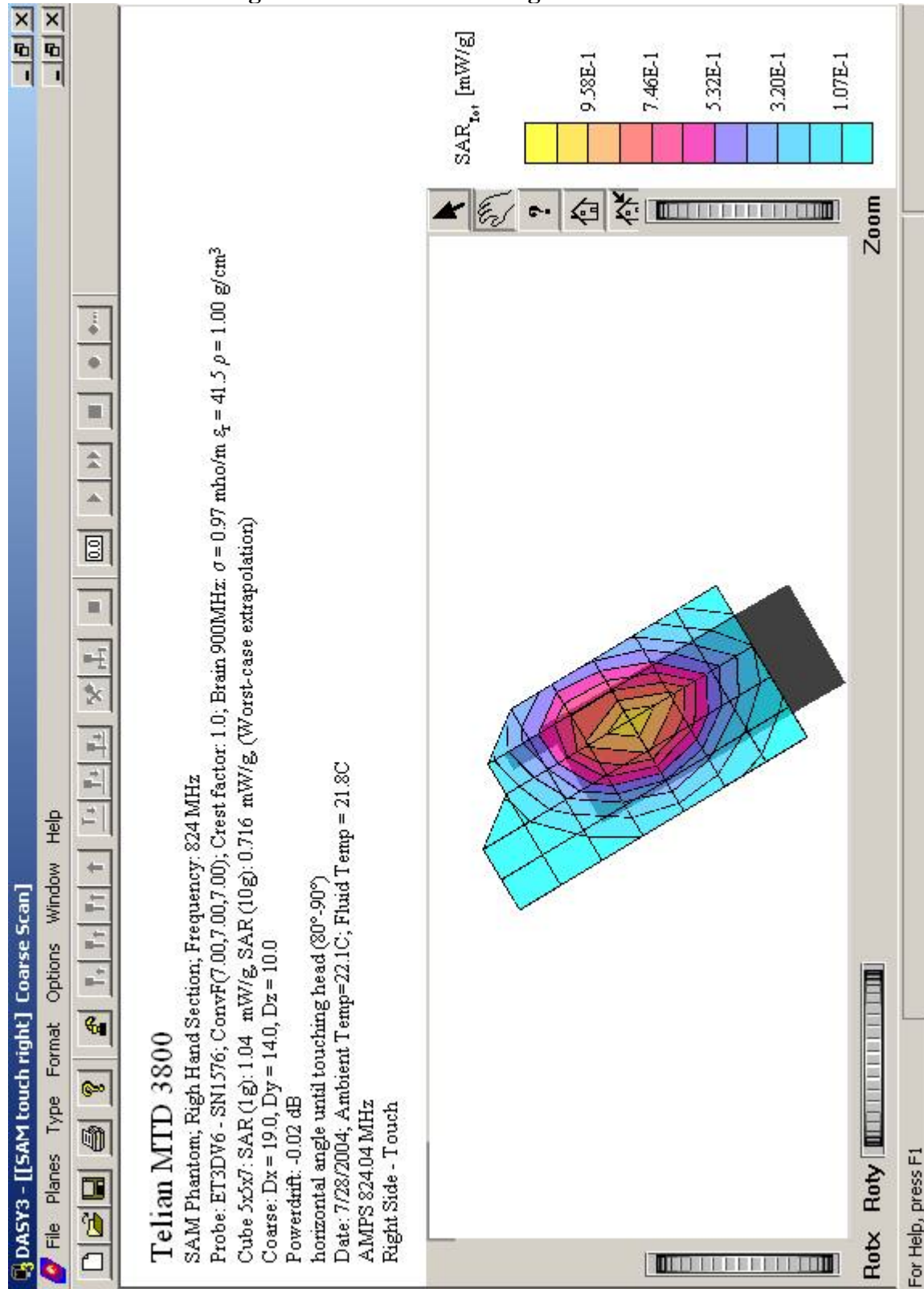


Figure 32: AMPS 824.04 Right Cheek Tilt

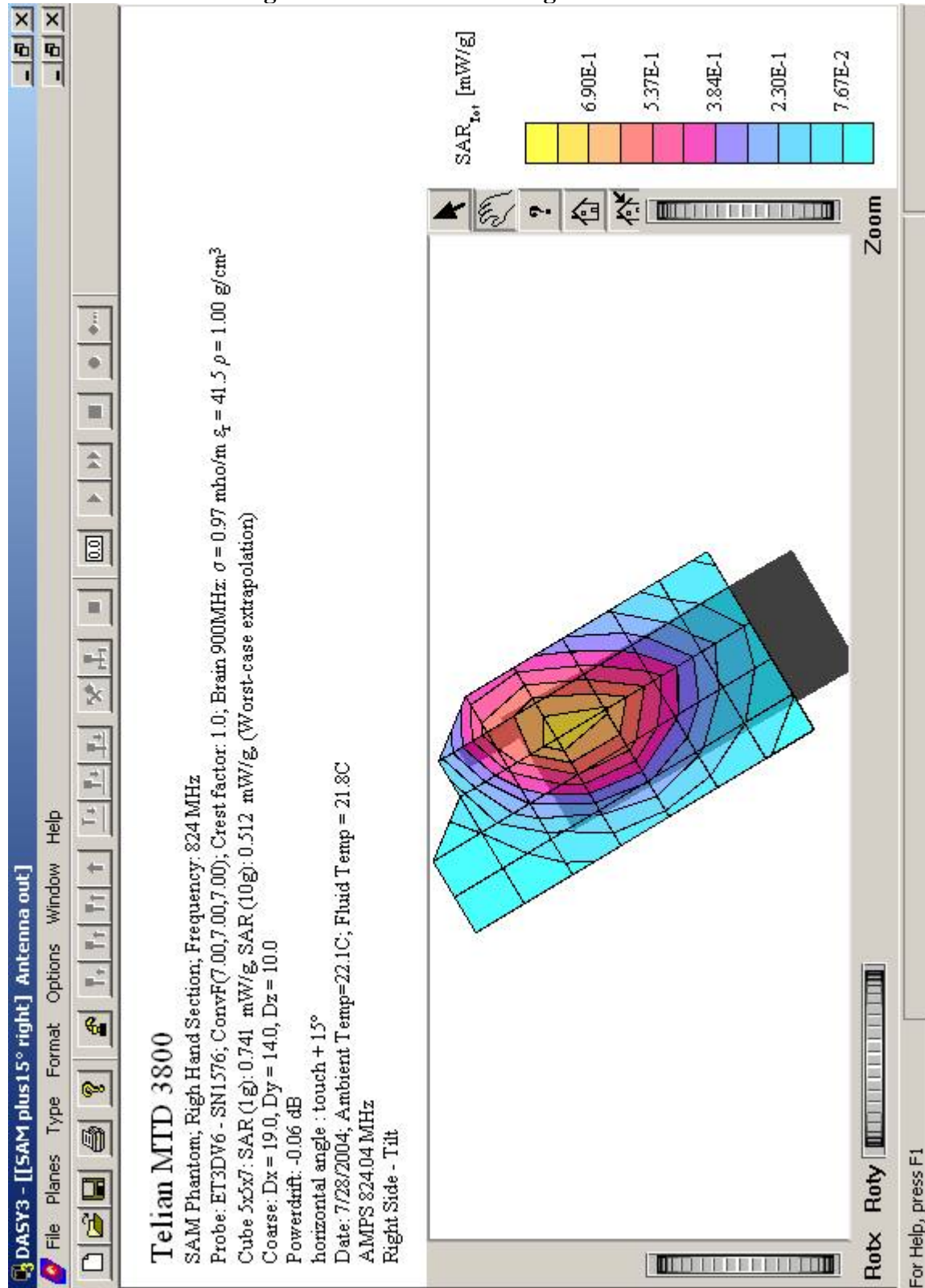


Figure 33: AMPS 824.04 Left Cheek Touch

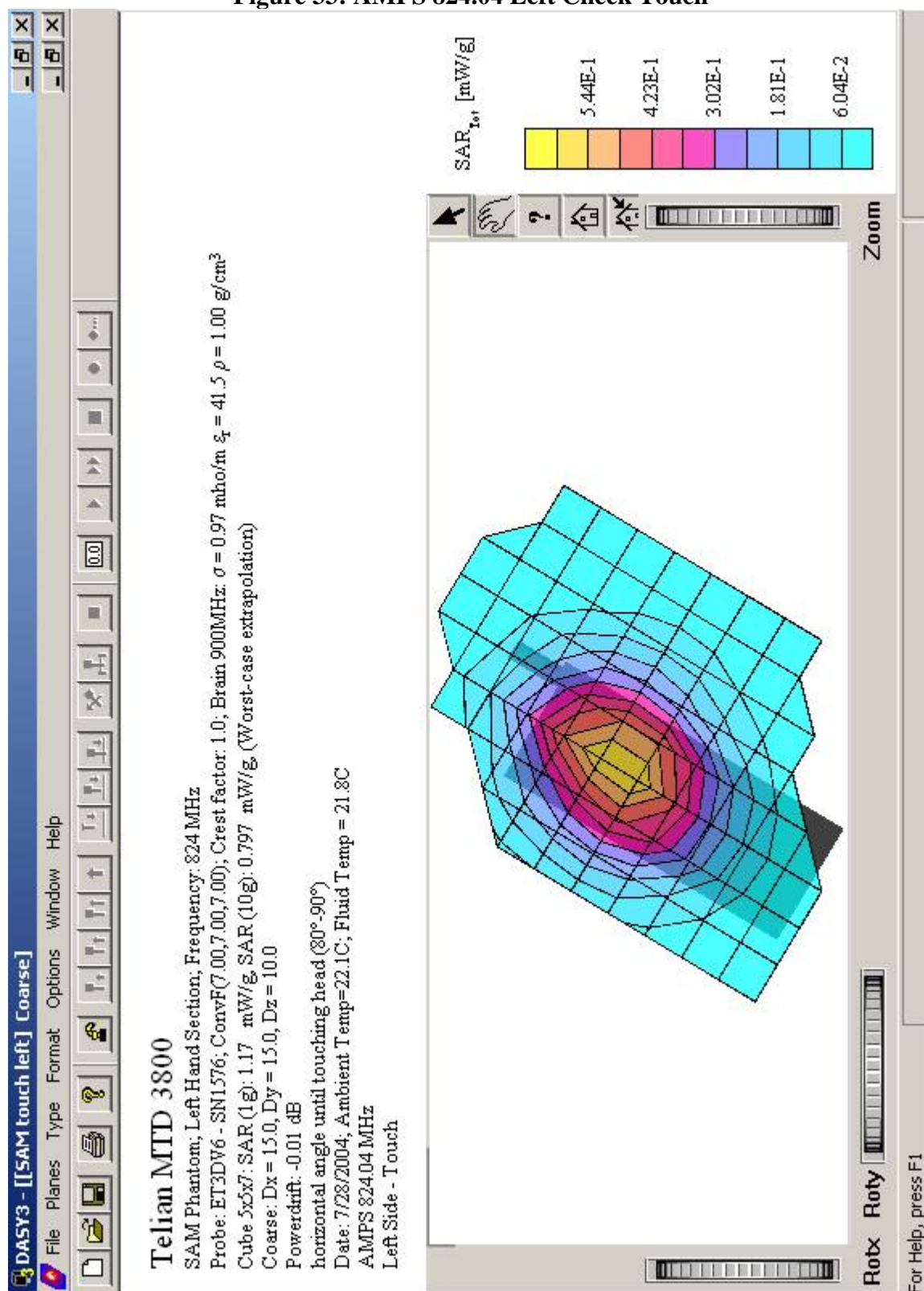


Figure 34: AMPS 824.04 Left Cheek Tilt

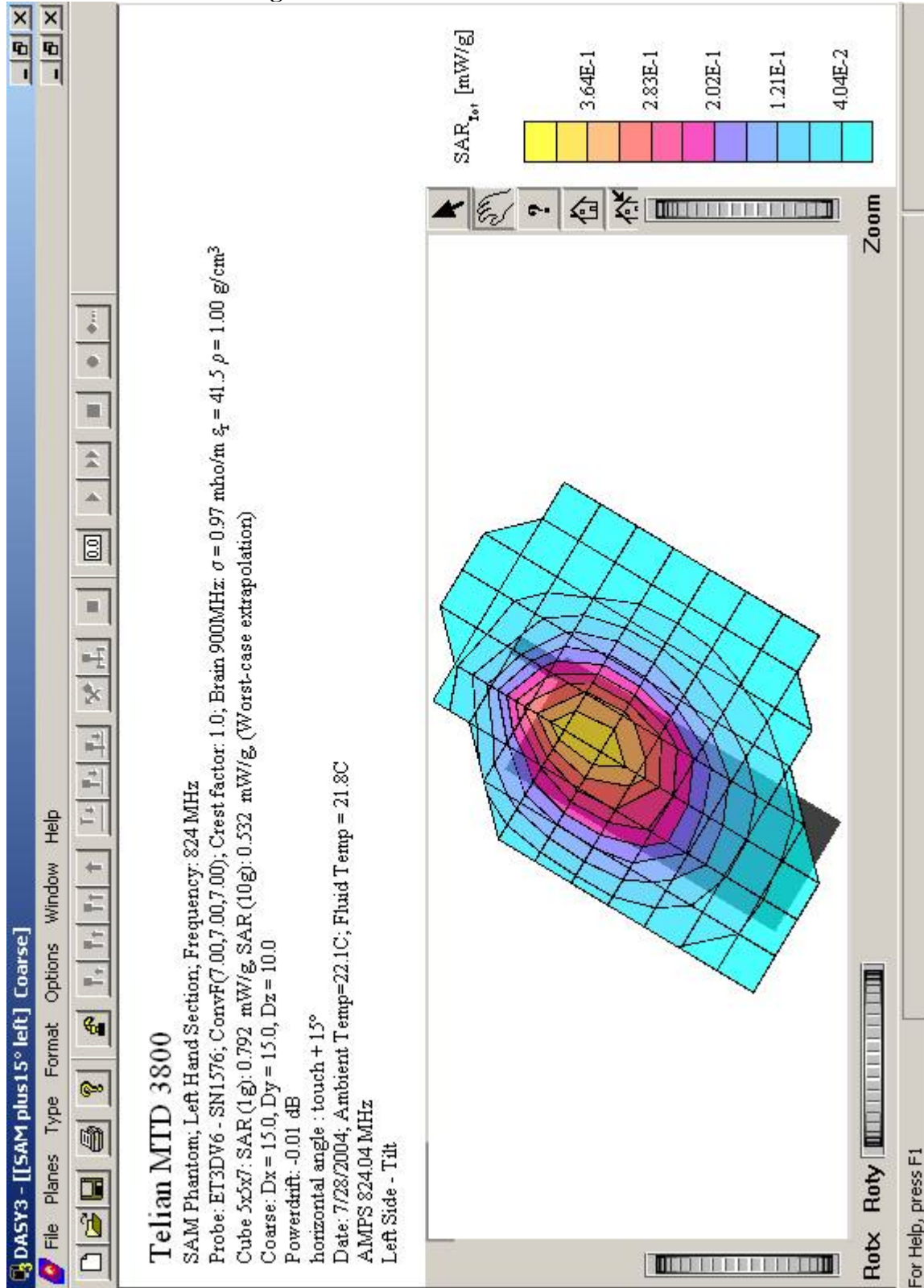


Figure 35: AMPS 824.04 Body Front Side

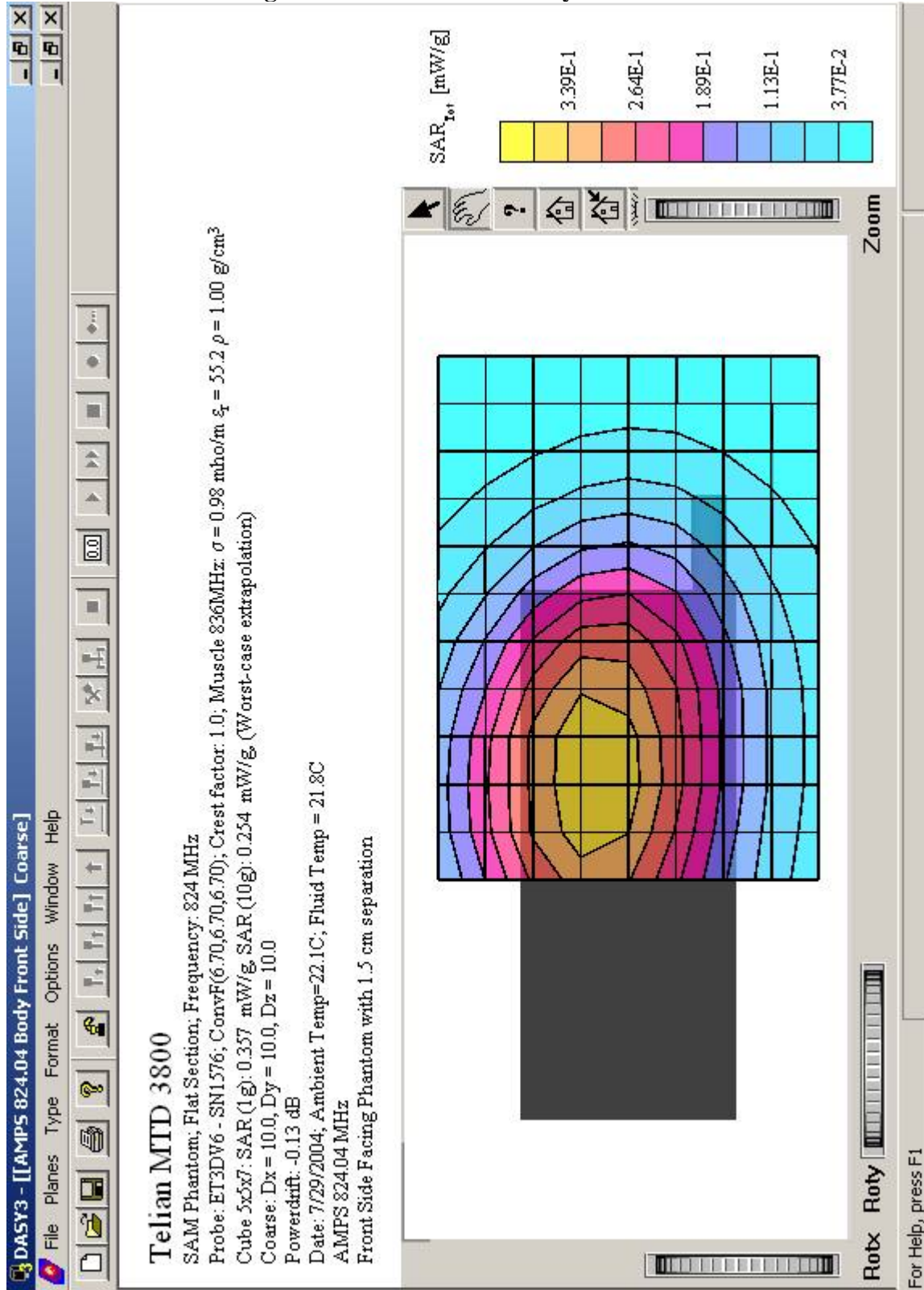


Figure 36: AMPS 824.04 Body Back Side

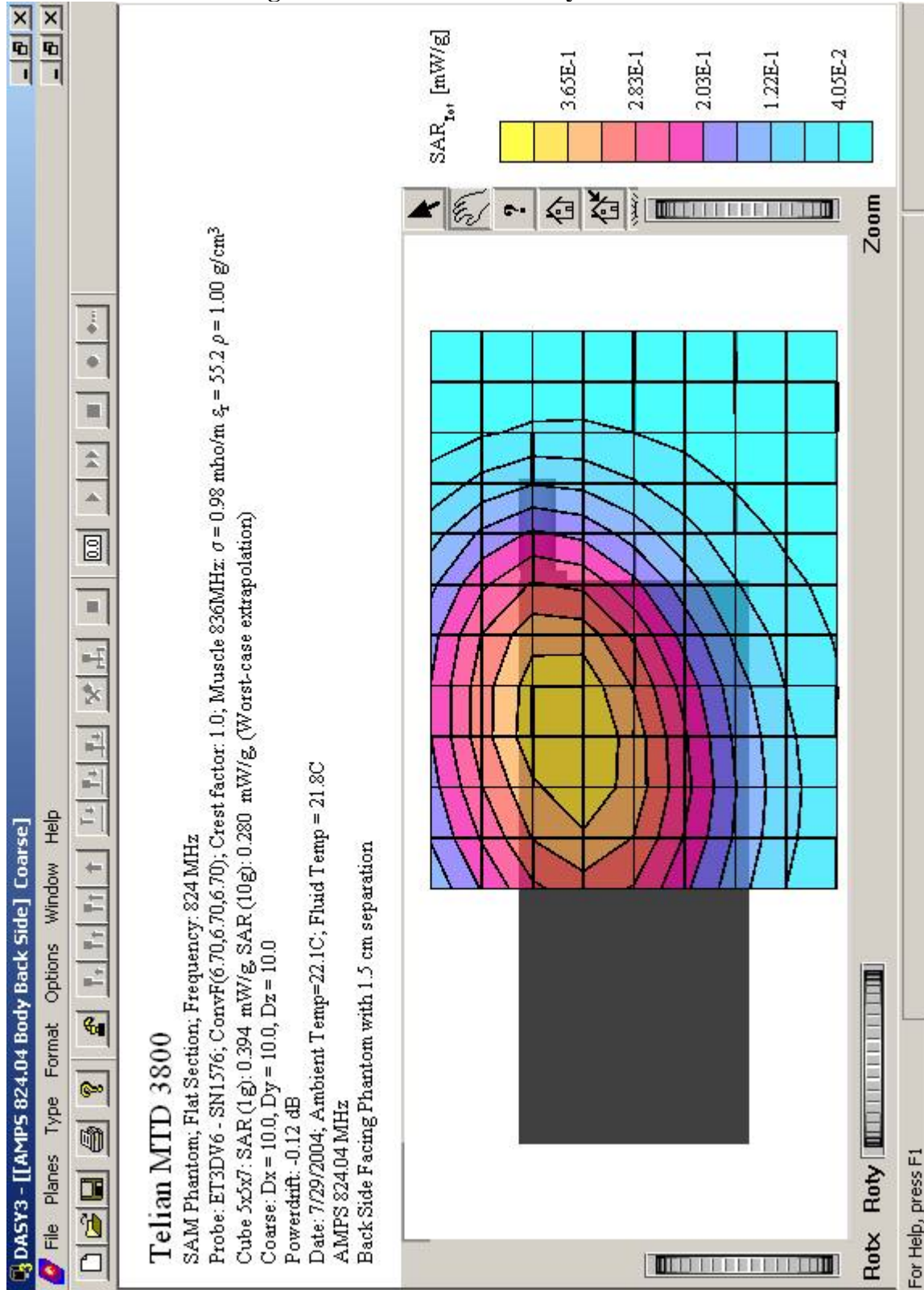
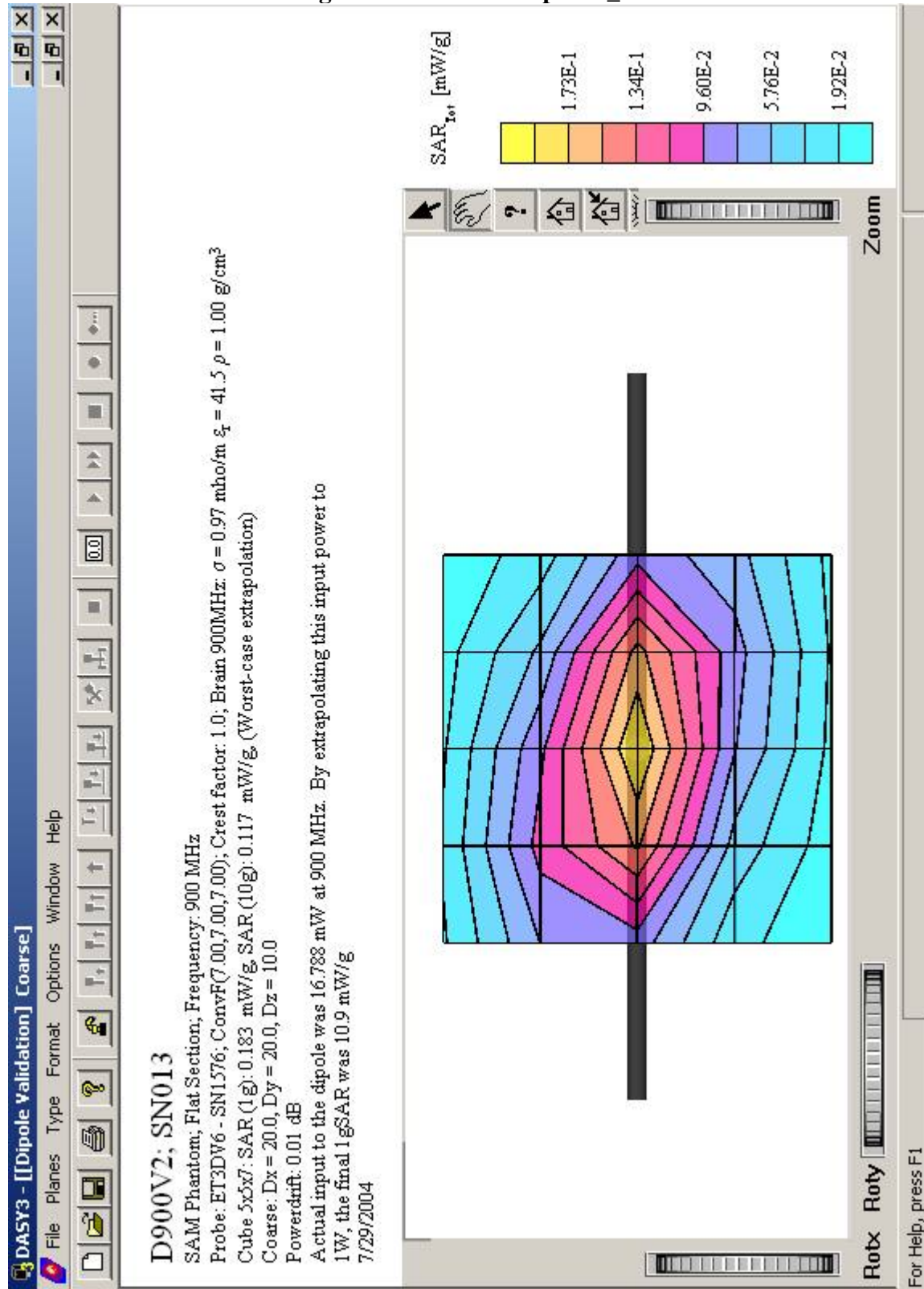


Figure 37: 900MHz Dipole 7\_29



**Figure 38: 900MHz Dipole 7\_28**

