



4th ~ 7th Fl. Namjeun Bldg. 53-3 Haan-Dong  
Gwangmyung-Si, Kyunggi-do, 423-060, Korea

February 25, 2008,

Federal Communications Commission  
Equipment Authorization Branch  
7435 Oakland Mills Road  
Columbia, MD 21046

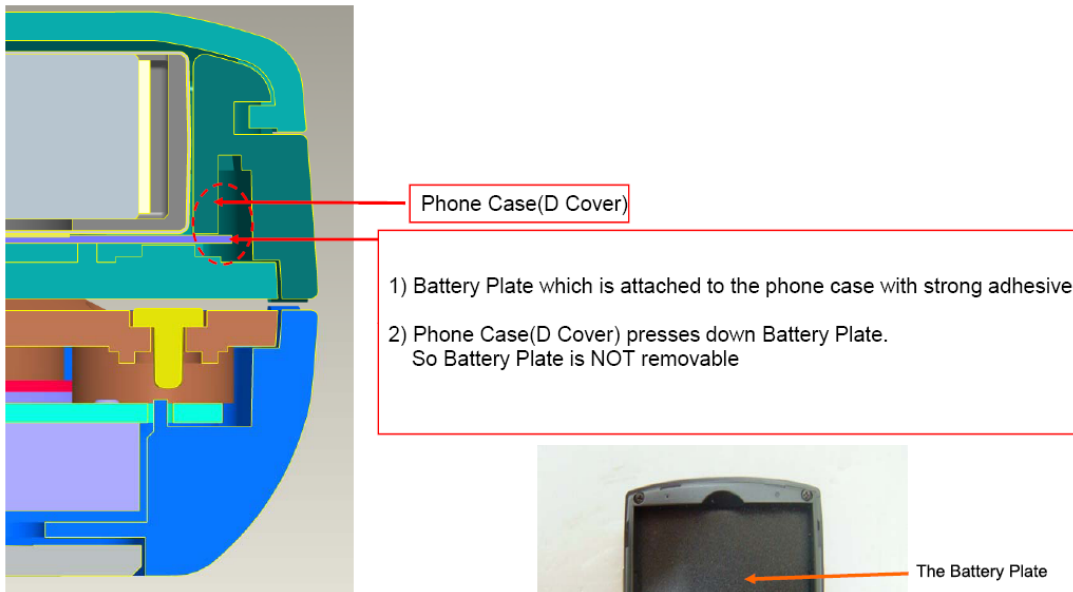
**In Re: Response to correspondence 48582**

To whom it may concern:

The FCC ID Label of NPQK3000 is on non-removable part of the device as described following.

1. The reason why the battery plate is NOT removable.
  - (1) The battery plate is attached to the phone case with strong adhesive.
  - (2) The phone case press down the battery plate(Refer to below drawing)
2. The reason why FCC ID Label(Transceiver Label) is NOT removable.

FCC ID Label is attached to the battery plate with strong adhesive.



Phone Upper Section View Drawing

Sincerely,

W.H WHANG/Senior Engineer