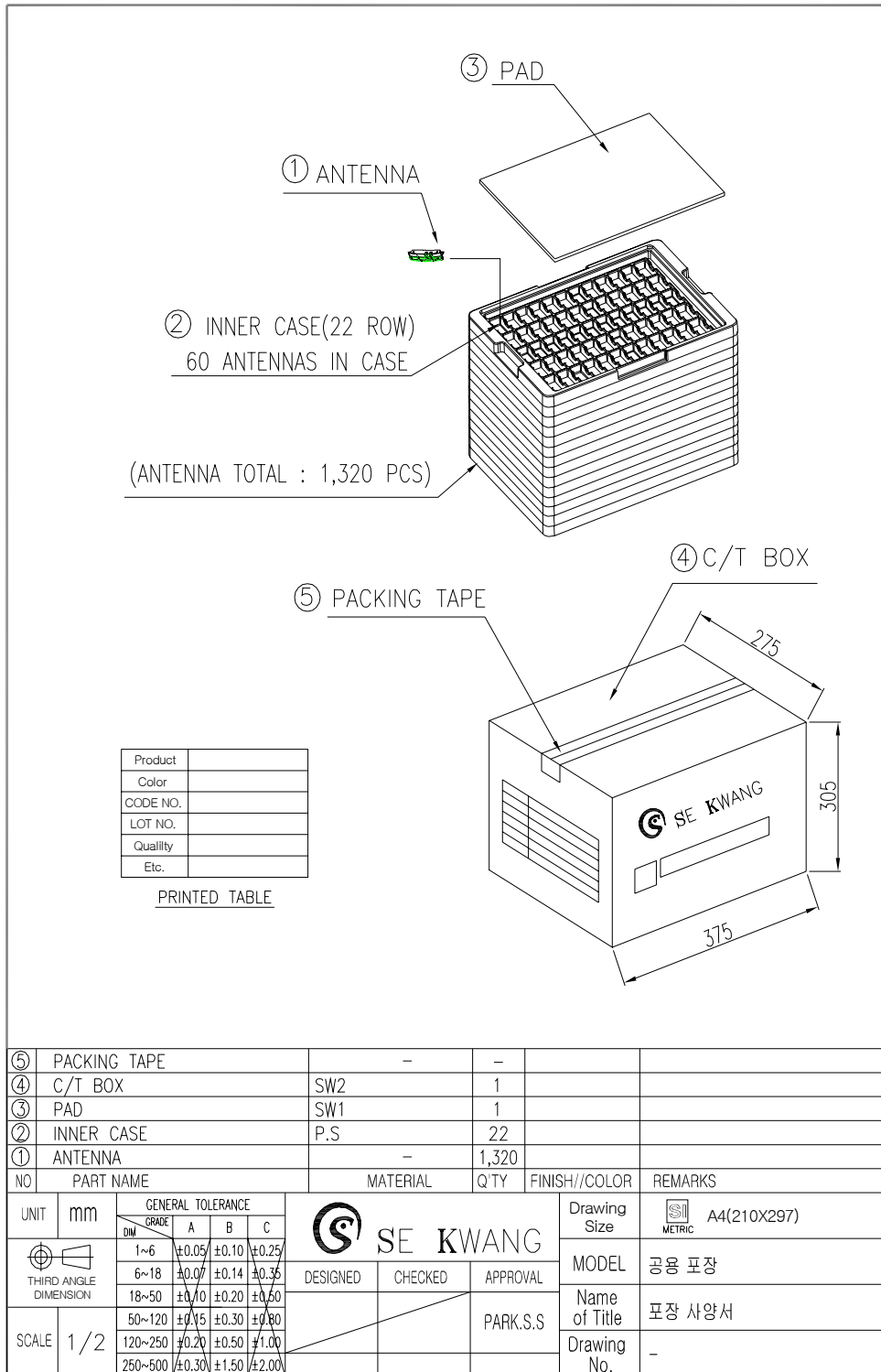




8. 포장 사양

8-1 포장 도면





8-2. 적 재

- 1) 고온 다습한 곳은 피해야 함.
- 2) 부식성이 강한 수소 황산화물 가스가 있는 곳은 피해야 함.
(산, 염소, 암모니아 등은 안테나 외관을 부식시키며 성능이 떨어질 수 있음)

[저장 환경 1]

- 온 도 : 5 to 35℃
- 습 도 : 45 to 75% RH
- 저장기간 : 6개월.

[저장 환경 2]

- 온 도 : -40 to 90℃
- 습 도 : 95% RH max
- 저장기간 : 96 시간.

8-3. 운 반

- 1) 안테나의 접촉단자가 구부러지거나 눌리면 접촉이 불안정하여 특성이 저하 될 수 있으므로 주의.
- 2) 운반시 안테나를 맨손으로 직접 만지지 말 것.
(안테나를 직접 손으로 만질 경우 안테나 위에 지문이 묻을 수 있으며 이 지문은 안테나 표면에 부식을 가져올 수 있음)



9. 제조 공정도

SE KWANG																
공급자명		SE KWANG		품명		Antenna		제조공정도								
MODEL		MGQ 7180L(1405)		품번		SKA704-0000AA										
작성일				2007.06.20												
공정			FLOW CHART			공정명		설비		관 리 점		관 리 방 법			관련 표준류	
NO	외 주	MAIN	SUB			제조 설비	금 형 치공구	관 리 항 목	담 당	기 준	측정기기 /방법	Check 주기	기록/ 분석방법	/비고		
0-0				원자재					구매부	생산계획의거						
0-1				수입검사				RADIATOR, BASE FRAME	수입검사	수입검시기준의거	V/C,P/S	메LOT	수입검사성적서	수입검사 기준서		
1				RADIATOR+ BASE FRAME										작업표준서		
2				조정지그 ← BODY SUB-ASM			조정지그							작업표준서		
3				용 착		용착기		온도 : 185℃ TIMING : 8sec	작업자	작업표준에 의거	육안	전수검사	생산일보	작업표준서		
4				성능 검사		N/A	성능검사 JIG	Log Mag (Limit point)	작업자	성능검사 JIG SETTING 값 기준	N/A	전수검사	생산일보	작업표준서		
5				완제품 검사				조립상 이상 유무 (①~④ 공정)	작업자	외관검사 세척 및 용착검사 세척	육안	전수검사	생산일보	작업표준서		
6				포장 및 출하				BOX포장방법	출하검사	BOX포장		전수검사	완제품 출하일지	완제품검사 기준서		
7																
8																
9																



10.유해 물질 인증서

10-1. CARRIER(PC HF-1023IM)



유해물질인증서

업체명 대상정밀화학
Grade/Color HF-1023IM/G7630
사용용도 핸드폰
분석기관 제일모직 종합연구원

시 료 명

구분	시료명	비고
수지	HF-1023IM	
칼라	G7630	A101,A502,CW01,DK04

시 험 결 과

시험항목	전처리방법	시험장비	단위(ppm)	M.D.L	함유량
중금속	Cd	EN 1122	ICP-AES	mg/kg	0.5 ND
	Pb	US EPA 3050B	ICP-AES	mg/kg	5 ND
	Hg	US EPA7473	Hg Analyzer	mg/kg	0.03 ND
	Cr ⁶⁺	USEPA 3060A	UV/VIS	mg/kg	1 ND
난연제	PBB	Cheil Method	GC/MS	mg/kg	5 ND
	PBDE	Cheil Method	GC/MS	mg/kg	5 ND

* 이 수치는 Eu 규정에 위배되지 않음 * M.D.L : Method Detection Limit * ND : Not Detected

시험책임자 : 최수만

Choi Suman.

승인자 : 이계홍

K.h. Lee.

발행일자 : 2007년 01월 03일

승인일자 : 2007년 01월 01일

품질보증팀





10-2. SHEET METAL(STS 304)

SGS**Test Report No. F690501/LF-CTSAYU07-11050**

Date: May 14, 2007

Page 1 of 4

To: TAIHAN STAINLESS STEEL CO., LTD
603 Seonggok-dong
Danwon-gu
Ansan-city
GYEONGGI-DO
Korea

The following merchandise was submitted and identified by the client as :

Product Name : STS304
SGS File No. : AYU07-11050
Received Date : May 07, 2007
Test Performing Date : May 08, 2007
Test Performed : SGS Testing Korea tested the sample(s) selected by applicant with following results
Test Results : For further details, please refer to following page(s)
Buyer(s) : LG, SAMSUNG

Sharpless Park /Testing Person

SGS Testing Korea Co. Ltd. / Ulsan Laboratory

Thomas Hwang / Ulsan Lab. Mgr

This document is issued by the Company under its General Conditions of Service accessible at http://www.sgs.com/terms_and_conditions.htm. Attention is drawn to the limitation of liability, indemnification and jurisdiction issues defined therein. Any other holder of this document is advised that information contained hereon reflects the Company's findings at the time of its intervention only and within the limits of Client's instructions, if any. The Company's sole responsibility is to its Client and this document does not exonerate parties to a transaction from exercising all their rights and obligations under the transaction documents. Any unauthorized alteration, forgery or falsification of the content or appearance of this document is unlawful and offenders may be prosecuted to the fullest extent of the law.



SGS

Test Report No. F690501/LF-CTSAYU07-11050

Date: May 14, 2007

Page 2 of 4

Sample No. : AYU07-11050.001
 Sample Description : STS304
 Style/Item No. : N/A
 Comments : Material is stainless.

Heavy Metals

Test Items	Unit	Test Method	MDL	Results
Cadmium (Cd)	mg/kg	US EPA 3052(1996), US EPA 6010B(1996), ICP	1	N.D.
Lead (Pb)	mg/kg	US EPA 3052(1996), US EPA 6010B(1996), ICP	5	N.D.
Mercury (Hg)	mg/kg	US EPA 3052(1996), US EPA 6010B(1996), ICP	2	N.D.
Hexavalent Chromium (Cr VI)	mg/kg	US EPA 3060A(1996), US EPA 7196A(1992), UV	1	N.D.

Flame Retardants-PBBs/PBDEs

Test Items	Unit	Test Method	MDL	Results
Monobromobiphenyl	mg/kg	US EPA 3540C, GC/MS	5	N.D.
Dibromobiphenyl	mg/kg	US EPA 3540C, GC/MS	5	N.D.
Tribromobiphenyl	mg/kg	US EPA 3540C, GC/MS	5	N.D.
Tetrabromobiphenyl	mg/kg	US EPA 3540C, GC/MS	5	N.D.
Pentabromobiphenyl	mg/kg	US EPA 3540C, GC/MS	5	N.D.
Hexabromobiphenyl	mg/kg	US EPA 3540C, GC/MS	5	N.D.
Heptabromobiphenyl	mg/kg	US EPA 3540C, GC/MS	5	N.D.
Octabromobiphenyl	mg/kg	US EPA 3540C, GC/MS	5	N.D.
Nonabromobiphenyl	mg/kg	US EPA 3540C, GC/MS	5	N.D.
Decabromobiphenyl	mg/kg	US EPA 3540C, GC/MS	5	N.D.
Monobromodiphenyl ether	mg/kg	US EPA 3540C, GC/MS	5	N.D.
Dibromodiphenyl ether	mg/kg	US EPA 3540C, GC/MS	5	N.D.
Tribromodiphenyl ether	mg/kg	US EPA 3540C, GC/MS	5	N.D.
Tetrabromodiphenyl ether	mg/kg	US EPA 3540C, GC/MS	5	N.D.
Pentabromodiphenyl ether	mg/kg	US EPA 3540C, GC/MS	5	N.D.
Hexabromodiphenyl ether	mg/kg	US EPA 3540C, GC/MS	5	N.D.
Heptabromodiphenyl ether	mg/kg	US EPA 3540C, GC/MS	5	N.D.
Octabromodiphenyl ether	mg/kg	US EPA 3540C, GC/MS	5	N.D.
Nonabromodiphenyl ether	mg/kg	US EPA 3540C, GC/MS	5	N.D.
Decabromodiphenyl ether	mg/kg	US EPA 3540C, GC/MS	5	N.D.

NOTE: (1) N.D. = Not detected. (<MDL)
 (2) ppm = mg/kg
 (3) MDL = Method Detection Limit
 (4) - = No regulation
 (5) ** = Qualitative analysis (No Unit)
 (6) Negative = Undetectable / Positive = Detectable

This document is issued by the Company under its General Conditions of Service accessible at http://www.sgs.com/terms_and_conditions.htm. Attention is drawn to the limitation of liability, indemnification and jurisdiction issues defined therein. Any other holder of this document is advised that information contained hereon reflects the Company's findings at the time of its intervention only and within the limits of Client's instructions, if any. The Company's sole responsibility is to its Client and this document does not exonerate parties to a transaction from exercising all their rights and obligations under the transaction documents. Any unauthorized alteration, forgery or falsification of the content or appearance of this document is unlawful and offenders may be prosecuted to the fullest extent of the law.

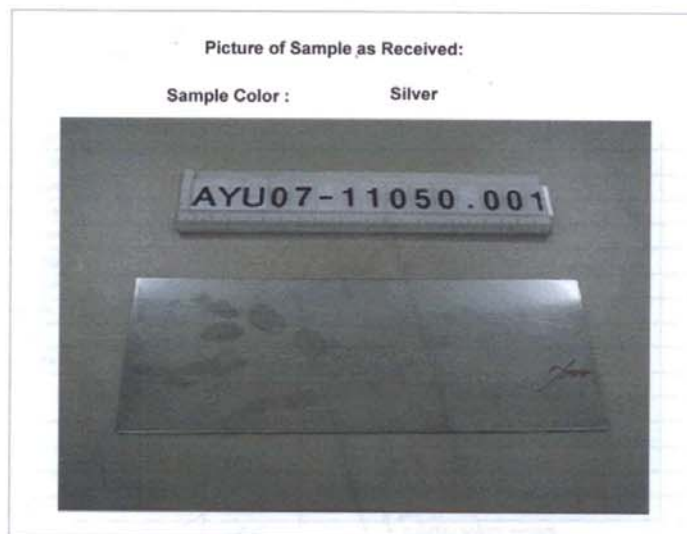
**SGS****Test Report No. F690501/LF-CTSAYU07-11050**

Date: May 14, 2007

Page 3 of 4

Picture of Sample as Received:

Sample Color : Silver



- NOTE: (1) N.D. = Not detected.(<MDL)
(2) ppm = mg/kg
(3) MDL = Method Detection Limit
(4) - = No regulation
(5) ** = Qualitative analysis (No Unit)
(6) Negative = Undetectable / Positive = Detectable

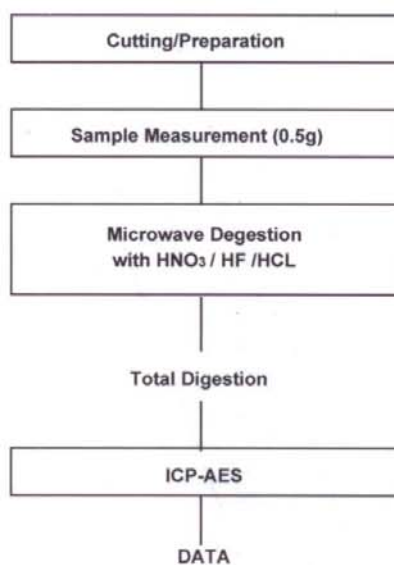
This document is issued by the Company under its General Conditions of Service accessible at http://www.sgs.com/terms_and_conditions.htm. Attention is drawn to the limitation of liability, indemnification and jurisdiction issues defined therein. Any other holder of this document is advised that information contained hereon reflects the Company's findings at the time of its intervention only and within the limits of Client's instructions, if any. The Company's sole responsibility is to its Client and this document does not exonerate parties to a transaction from exercising all their rights and obligations under the transaction documents. Any unauthorized alteration, forgery or falsification of the content or appearance of this document is unlawful and offenders may be prosecuted to the fullest extent of the law.



Test Report No. F690501/LF-CTSAYU07-11050

Date: May 14, 2007

Page 4 of 4

Flow Chart of Digestion
(USEPA 3052 for Cd, Pb)

The samples were dissolved totally by pre-conditioning method according to above flow chart.

Operator : Sharpless Park

Section Chief : Thomas Hwang

*** End ***

- NOTE: (1) N.D. = Not detected.(<MDL)
(2) ppm = mg/kg
(3) MDL = Method Detection Limit
(4) - = No regulation
(5) ** = Qualitative analysis (No Unit)
(6) Negative = Undetectable / Positive = Detectable

This document is issued by the Company under its General Conditions of Service accessible at http://www.sgs.com/terms_and_conditions.htm. Attention is drawn to the limitation of liability, indemnification and jurisdiction issues defined therein. Any other holder of this document is advised that information contained hereon reflects the Company's findings at the time of its intervention only and within the limits of Client's instructions, if any. The Company's sole responsibility is to its Client and this document does not exonerate parties to a transaction from exercising all their rights and obligations under the transaction documents. Any unauthorized alteration, forgery or falsification of the content or appearance of this document is unlawful and offenders may be prosecuted to the fullest extent of the law.