

DRAWING CONVENTIONS:
 THIS INFORMATION IS THE PROPERTY OF DATARADIO, INC.
 NO REPRODUCTION OR DISTRIBUTION WITHOUT PERMISSION.

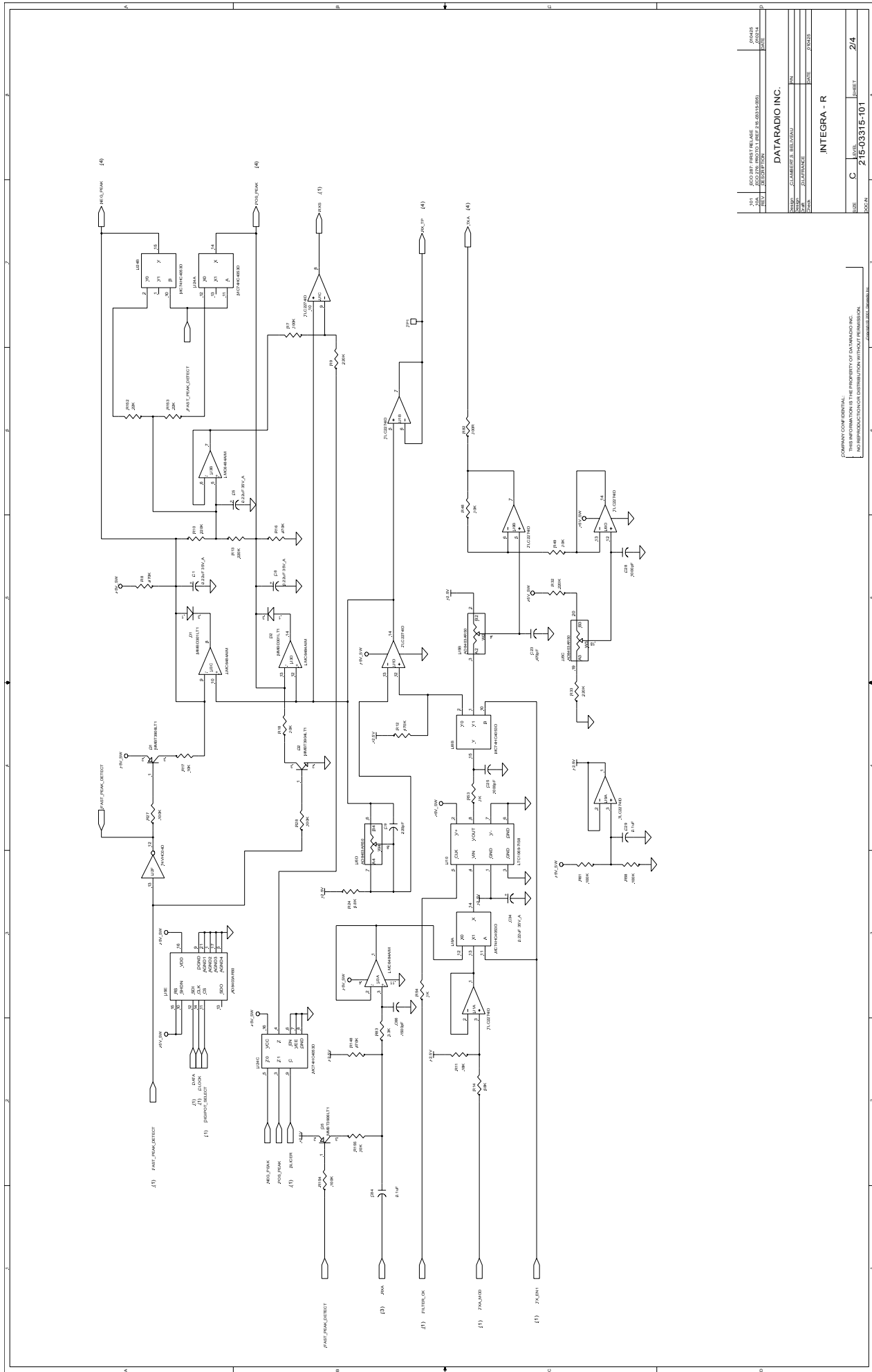
REV	DATE	BY	CHKD
1.0	11/18/83	W. J. WILSON	W. J. WILSON
1.1	12/15/83	W. J. WILSON	W. J. WILSON
1.2	1/10/84	W. J. WILSON	W. J. WILSON
1.3	1/10/84	W. J. WILSON	W. J. WILSON
1.4	1/10/84	W. J. WILSON	W. J. WILSON
1.5	1/10/84	W. J. WILSON	W. J. WILSON
1.6	1/10/84	W. J. WILSON	W. J. WILSON
1.7	1/10/84	W. J. WILSON	W. J. WILSON
1.8	1/10/84	W. J. WILSON	W. J. WILSON
1.9	1/10/84	W. J. WILSON	W. J. WILSON
1.10	1/10/84	W. J. WILSON	W. J. WILSON
1.11	1/10/84	W. J. WILSON	W. J. WILSON
1.12	1/10/84	W. J. WILSON	W. J. WILSON
1.13	1/10/84	W. J. WILSON	W. J. WILSON
1.14	1/10/84	W. J. WILSON	W. J. WILSON
1.15	1/10/84	W. J. WILSON	W. J. WILSON
1.16	1/10/84	W. J. WILSON	W. J. WILSON
1.17	1/10/84	W. J. WILSON	W. J. WILSON
1.18	1/10/84	W. J. WILSON	W. J. WILSON
1.19	1/10/84	W. J. WILSON	W. J. WILSON
1.20	1/10/84	W. J. WILSON	W. J. WILSON
1.21	1/10/84	W. J. WILSON	W. J. WILSON
1.22	1/10/84	W. J. WILSON	W. J. WILSON
1.23	1/10/84	W. J. WILSON	W. J. WILSON
1.24	1/10/84	W. J. WILSON	W. J. WILSON
1.25	1/10/84	W. J. WILSON	W. J. WILSON
1.26	1/10/84	W. J. WILSON	W. J. WILSON
1.27	1/10/84	W. J. WILSON	W. J. WILSON
1.28	1/10/84	W. J. WILSON	W. J. WILSON
1.29	1/10/84	W. J. WILSON	W. J. WILSON
1.30	1/10/84	W. J. WILSON	W. J. WILSON
1.31	1/10/84	W. J. WILSON	W. J. WILSON
1.32	1/10/84	W. J. WILSON	W. J. WILSON
1.33	1/10/84	W. J. WILSON	W. J. WILSON
1.34	1/10/84	W. J. WILSON	W. J. WILSON
1.35	1/10/84	W. J. WILSON	W. J. WILSON
1.36	1/10/84	W. J. WILSON	W. J. WILSON
1.37	1/10/84	W. J. WILSON	W. J. WILSON
1.38	1/10/84	W. J. WILSON	W. J. WILSON
1.39	1/10/84	W. J. WILSON	W. J. WILSON
1.40	1/10/84	W. J. WILSON	W. J. WILSON
1.41	1/10/84	W. J. WILSON	W. J. WILSON
1.42	1/10/84	W. J. WILSON	W. J. WILSON
1.43	1/10/84	W. J. WILSON	W. J. WILSON
1.44	1/10/84	W. J. WILSON	W. J. WILSON
1.45	1/10/84	W. J. WILSON	W. J. WILSON
1.46	1/10/84	W. J. WILSON	W. J. WILSON
1.47	1/10/84	W. J. WILSON	W. J. WILSON
1.48	1/10/84	W. J. WILSON	W. J. WILSON
1.49	1/10/84	W. J. WILSON	W. J. WILSON
1.50	1/10/84	W. J. WILSON	W. J. WILSON
1.51	1/10/84	W. J. WILSON	W. J. WILSON
1.52	1/10/84	W. J. WILSON	W. J. WILSON
1.53	1/10/84	W. J. WILSON	W. J. WILSON
1.54	1/10/84	W. J. WILSON	W. J. WILSON
1.55	1/10/84	W. J. WILSON	W. J. WILSON
1.56	1/10/84	W. J. WILSON	W. J. WILSON
1.57	1/10/84	W. J. WILSON	W. J. WILSON
1.58	1/10/84	W. J. WILSON	W. J. WILSON
1.59	1/10/84	W. J. WILSON	W. J. WILSON
1.60	1/10/84	W. J. WILSON	W. J. WILSON
1.61	1/10/84	W. J. WILSON	W. J. WILSON
1.62	1/10/84	W. J. WILSON	W. J. WILSON
1.63	1/10/84	W. J. WILSON	W. J. WILSON
1.64	1/10/84	W. J. WILSON	W. J. WILSON
1.65	1/10/84	W. J. WILSON	W. J. WILSON
1.66	1/10/84	W. J. WILSON	W. J. WILSON
1.67	1/10/84	W. J. WILSON	W. J. WILSON
1.68	1/10/84	W. J. WILSON	W. J. WILSON
1.69	1/10/84	W. J. WILSON	W. J. WILSON
1.70	1/10/84	W. J. WILSON	W. J. WILSON
1.71	1/10/84	W. J. WILSON	W. J. WILSON
1.72	1/10/84	W. J. WILSON	W. J. WILSON
1.73	1/10/84	W. J. WILSON	W. J. WILSON
1.74	1/10/84	W. J. WILSON	W. J. WILSON
1.75	1/10/84	W. J. WILSON	W. J. WILSON
1.76	1/10/84	W. J. WILSON	W. J. WILSON
1.77	1/10/84	W. J. WILSON	W. J. WILSON
1.78	1/10/84	W. J. WILSON	W. J. WILSON
1.79	1/10/84	W. J. WILSON	W. J. WILSON
1.80	1/10/84	W. J. WILSON	W. J. WILSON
1.81	1/10/84	W. J. WILSON	W. J. WILSON
1.82	1/10/84	W. J. WILSON	W. J. WILSON
1.83	1/10/84	W. J. WILSON	W. J. WILSON
1.84	1/10/84	W. J. WILSON	W. J. WILSON
1.85	1/10/84	W. J. WILSON	W. J. WILSON
1.86	1/10/84	W. J. WILSON	W. J. WILSON
1.87	1/10/84	W. J. WILSON	W. J. WILSON
1.88	1/10/84	W. J. WILSON	W. J. WILSON
1.89	1/10/84	W. J. WILSON	W. J. WILSON
1.90	1/10/84	W. J. WILSON	W. J. WILSON
1.91	1/10/84	W. J. WILSON	W. J. WILSON
1.92	1/10/84	W. J. WILSON	W. J. WILSON
1.93	1/10/84	W. J. WILSON	W. J. WILSON
1.94	1/10/84	W. J. WILSON	W. J. WILSON
1.95	1/10/84	W. J. WILSON	W. J. WILSON
1.96	1/10/84	W. J. WILSON	W. J. WILSON
1.97	1/10/84	W. J. WILSON	W. J. WILSON
1.98	1/10/84	W. J. WILSON	W. J. WILSON
1.99	1/10/84	W. J. WILSON	W. J. WILSON
2.00	1/10/84	W. J. WILSON	W. J. WILSON

DATARADIO INC.
 10000 W. 10TH AVE. SUITE 100
 DENVER, CO 80231
 TEL: 303-751-1000
 FAX: 303-751-1001

INTEGRA - R
 LOGIC BOARD

REV B
 215-03315-101

1/4



DATE	2003-07-15	REVISED	1
DESIGNED BY	DAVID R. HARRIS	CHECKED BY	DAVID R. HARRIS
DATE	2003-07-15	REVISED	1
DESIGNED BY	DAVID R. HARRIS	CHECKED BY	DAVID R. HARRIS
DATE	2003-07-15	REVISED	1
DESIGNED BY	DAVID R. HARRIS	CHECKED BY	DAVID R. HARRIS

DATARADIO INC.
 10000 WILSON AVENUE
 SUITE 100
 BOSTON, MA 02120
 TEL: 617-252-1100
 FAX: 617-252-1101
 WWW: WWW.DATARADIO.COM

INTEGRA - R

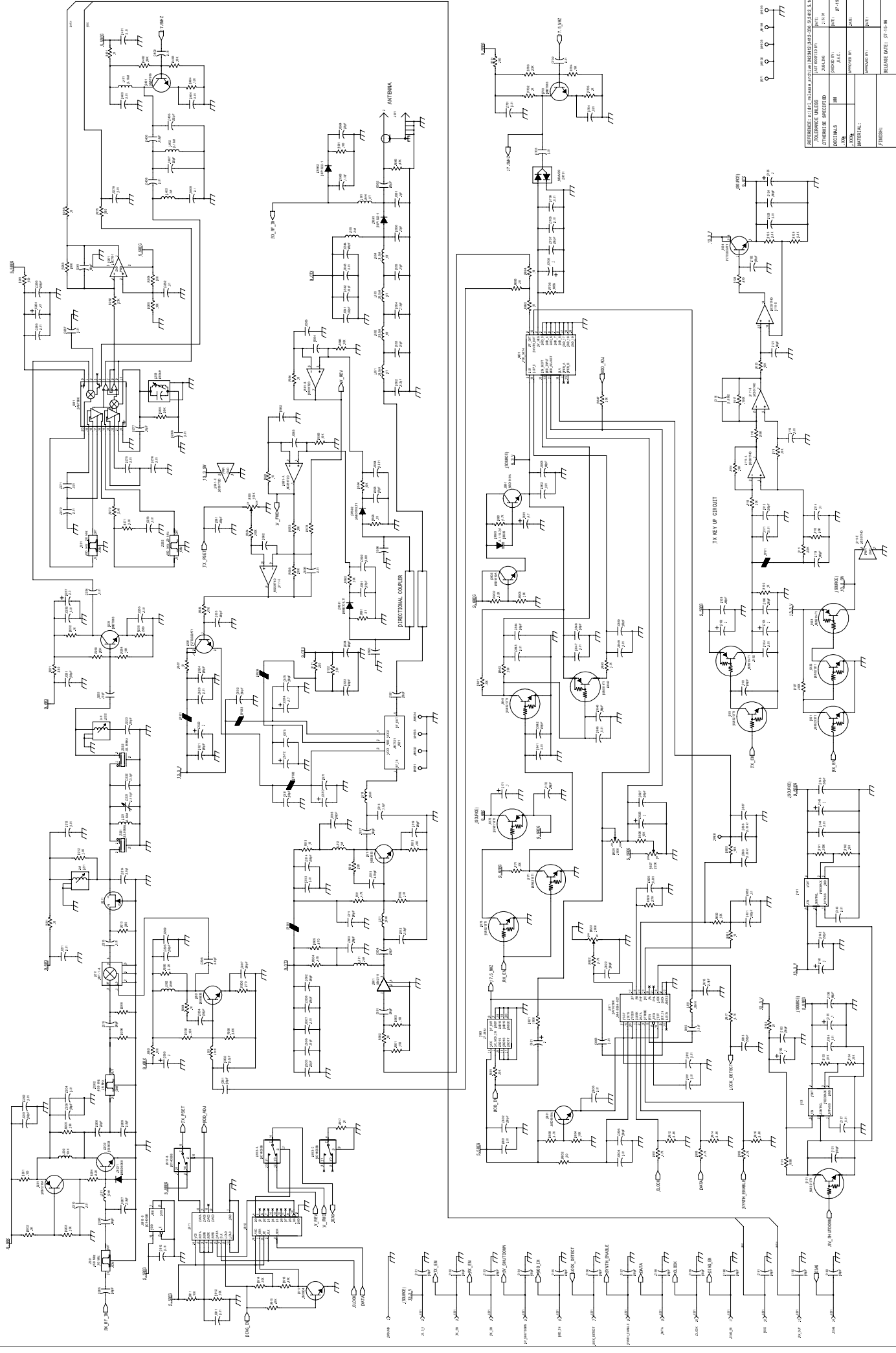
SIZE	C	SHEET	2/4
DATE	2003-07-15	REVISED	1

COMPANY CONFIDENTIAL
 THIS INFORMATION IS THE PROPERTY OF DATARADIO INC.
 NO REPRODUCTION OR DISTRIBUTION WITHOUT THE WRITTEN PERMISSION OF DATARADIO INC.

D-025-3412-030

REVISION

REV 5	DATE	BY
REV 4	05/12/81	SP
REV 3		
REV 2		
REV 1		



COMPANY CONFIDENTIAL

PERFORMANCE / QUALITY / SERVICE / SUPPORT / DELIVERY / VALUE / ETC.

DESIGNER: [Signature]

DATE: 07-18-80

SYMBOLS: [Symbol]

SCALE: [Scale]

REVISION NO.: [Revision]

RELEASE DATE: 07-18-80

PROJECT: [Project]

FILE: [File]

UHF TELEMETRY MODULE

D-025-3412-030

REV: [Rev]

SHEET: [Sheet]