

## SCHEMATICS AND LAYOUTS

### 6.1 GENERAL

This section contains the top and bottom component board layouts and schematic diagram for the 3286 Modem.

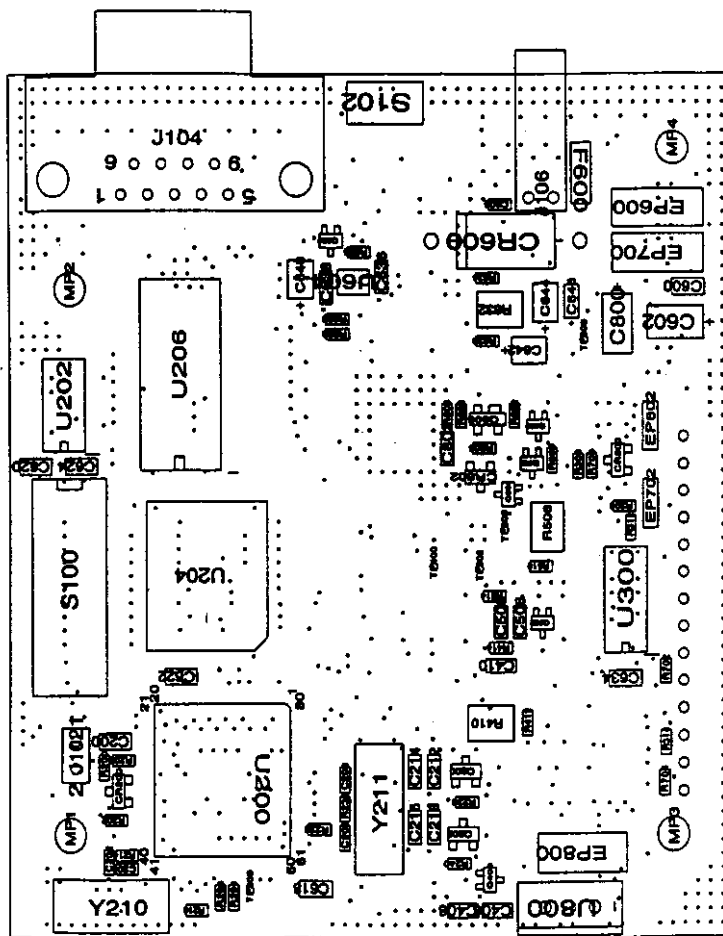
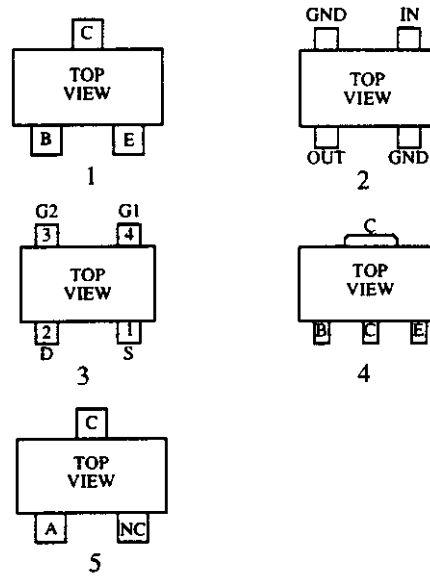


Figure 6-1 3286 Modem Board Component Layout (Top)

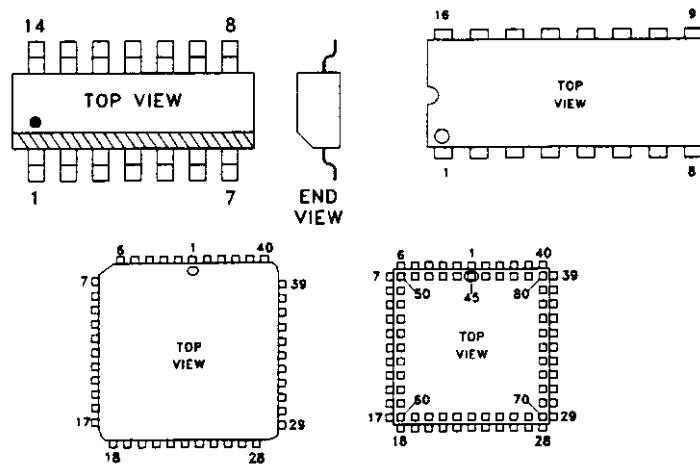
Company Confidential © 1998 Johnson Data Telemetry Corporation

# SECTION 8 SCHEMATICS AND COMPONENT LAYOUTS

TRANSISTOR AND DIODE BASING REFERENCE TABLE		
TRANSISTORS		
Part Number	Basing Diagram	Identification
576-0003-636	1	
576-0003-640	2	
576-0006-027	4	PIF
576-0006-405	3	U72
576-0013-032	1	6D
576-0013-046	1	8C
576-0013-700	1	BR
576-0013-701	1	ZR
DIODES		
523-1504-001	5	4D
523-1504-002	5	5A
523-1504-016	5	5F
523-5005-022	5	5B



## INTEGRATED CIRCUITS



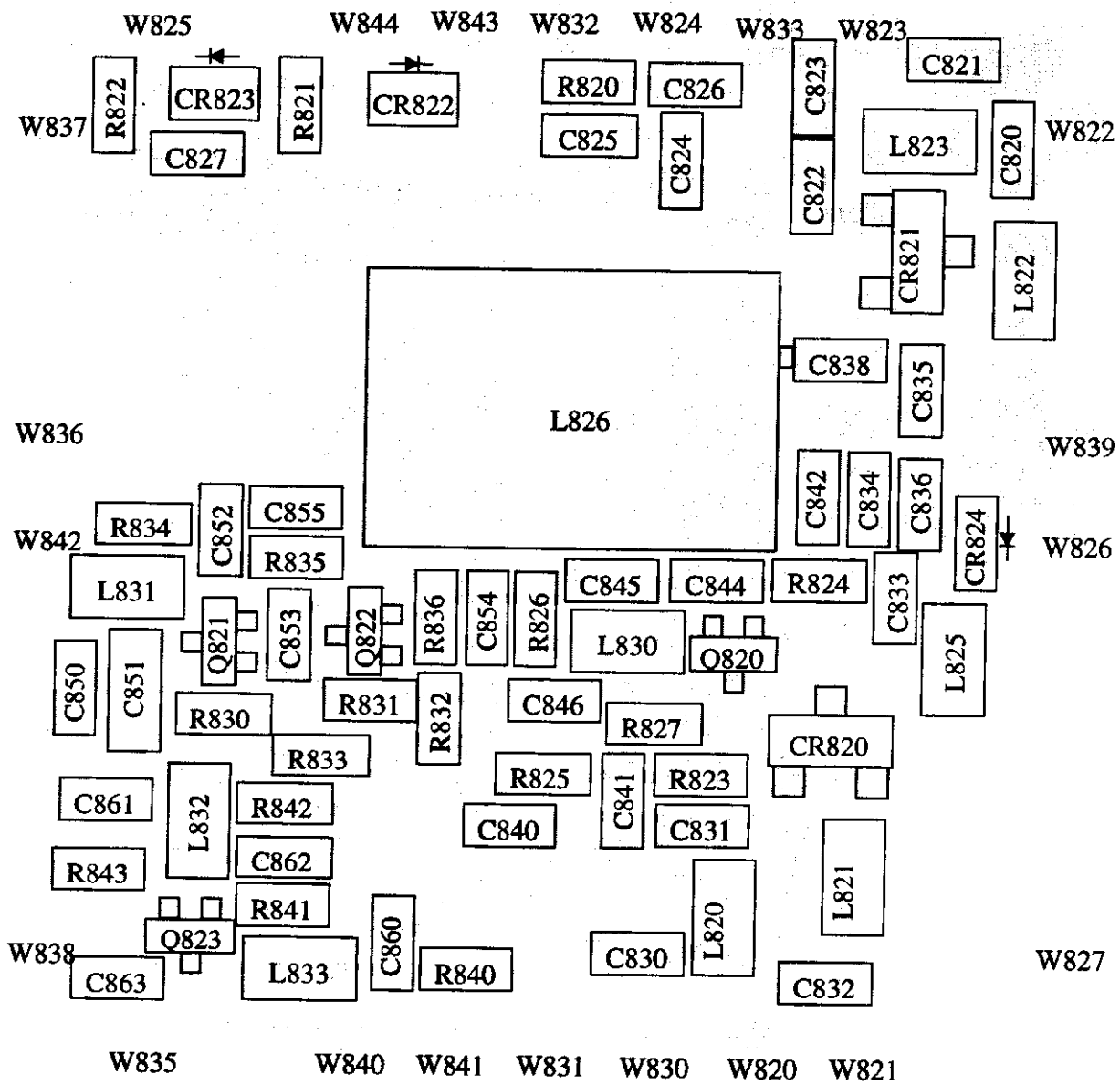
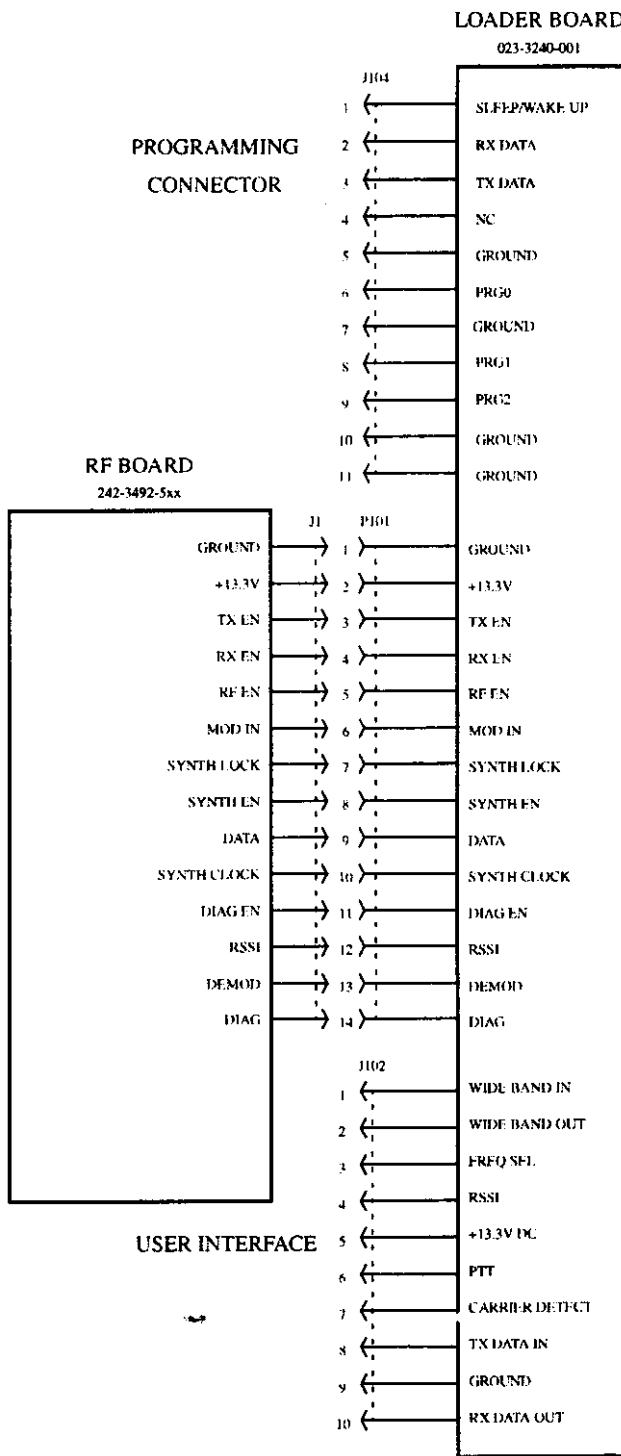


Figure 8-7 VCO COMPONENT LAYOUT



**Figure 8-1 LOADER BOARD INTERCONNECT**

# SCHEMATICS AND LAYOUTS

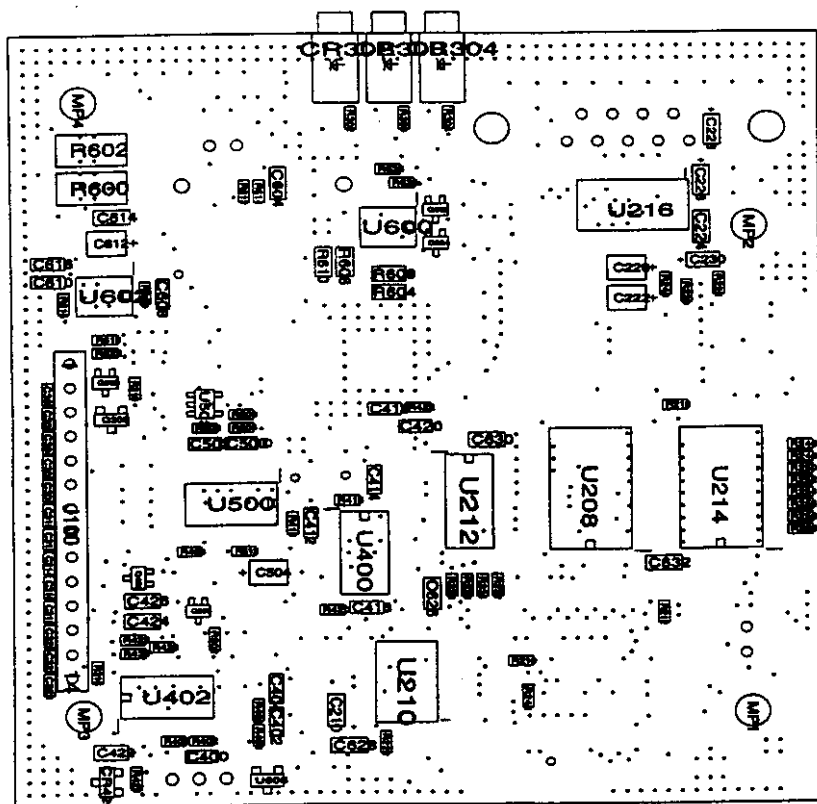


Figure 6-2 3286 Modem Board Component Layout (Bottom)

Company Confidential © 1998 Johnson Data Telemetry Corporation



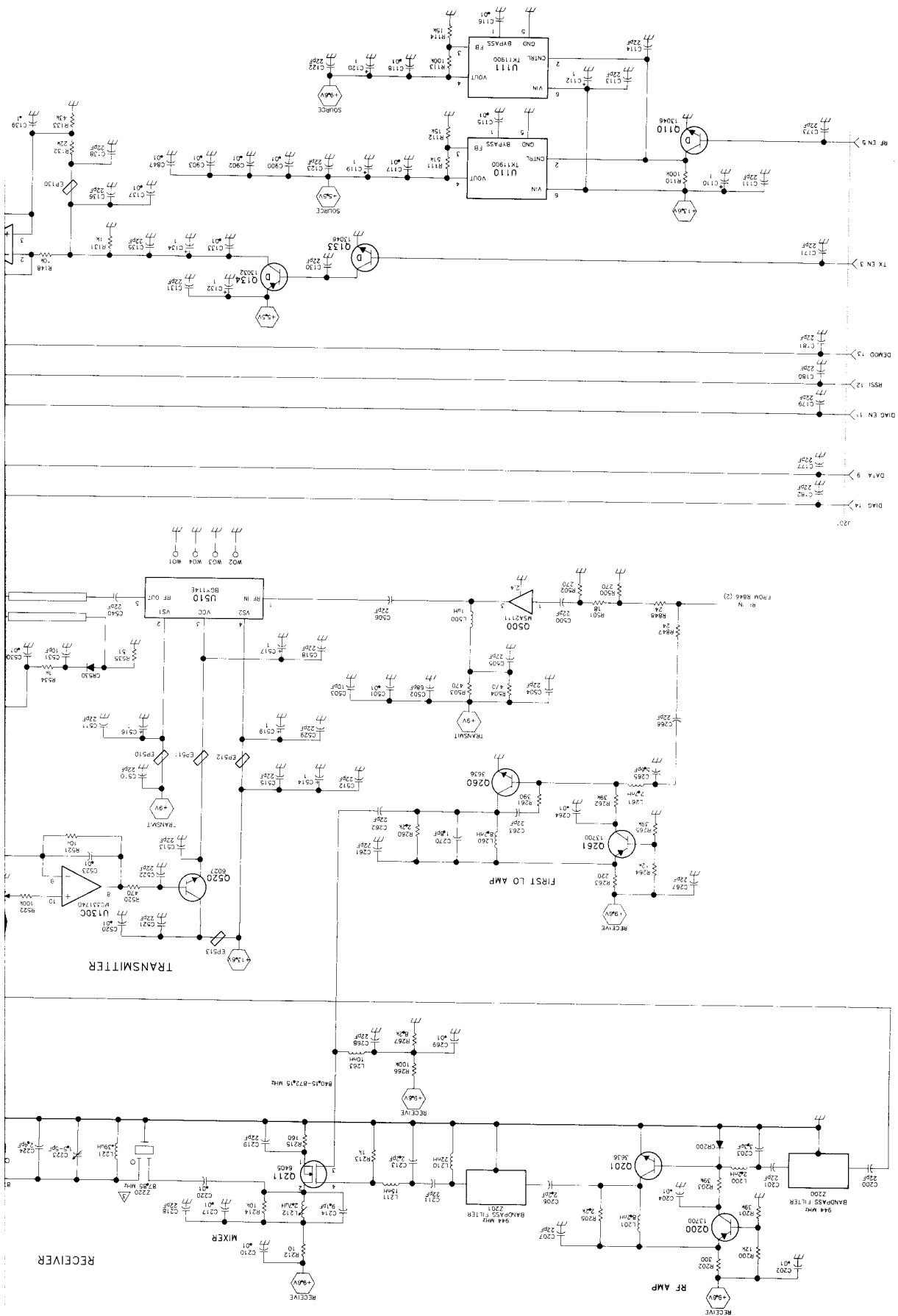


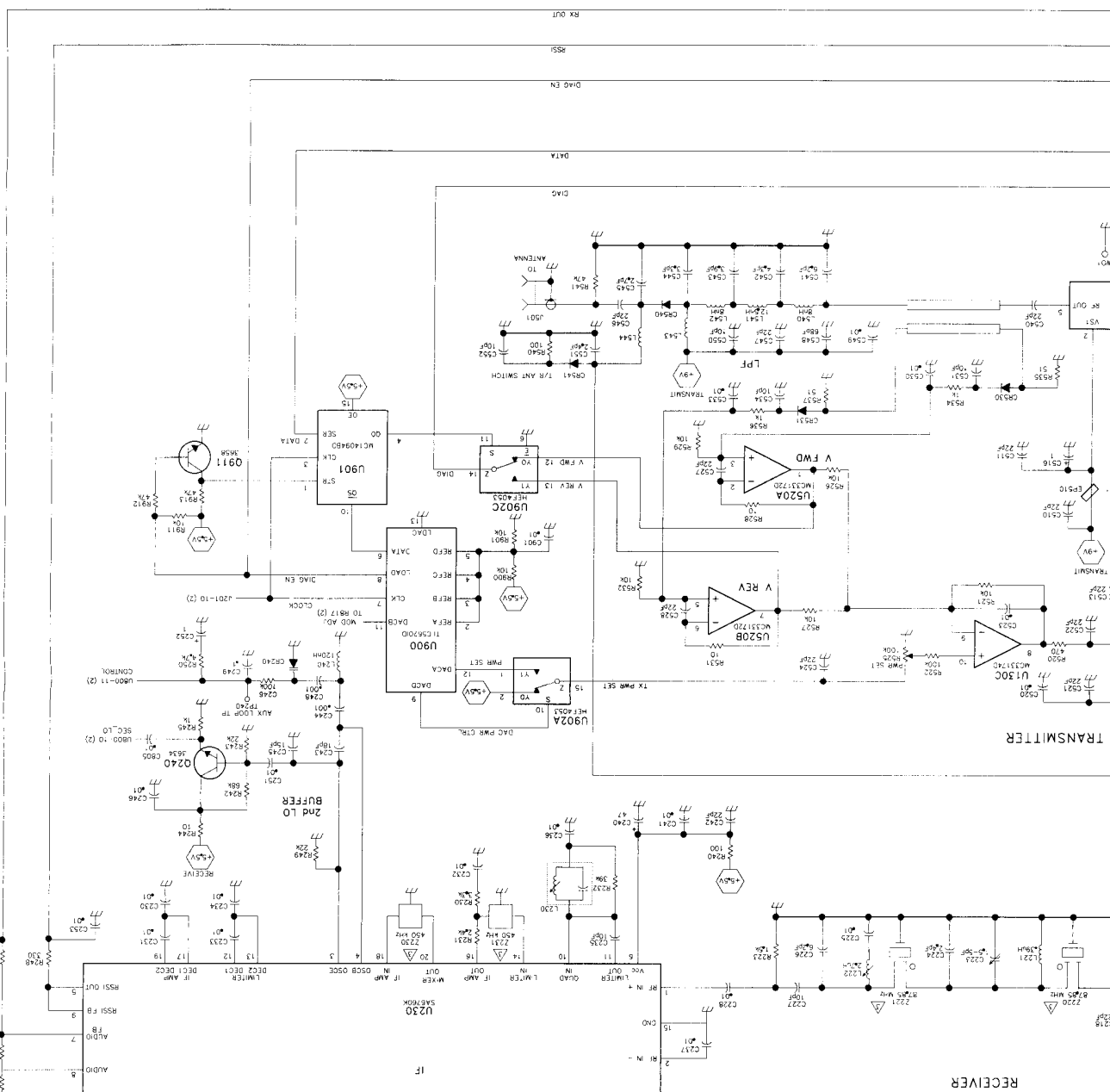
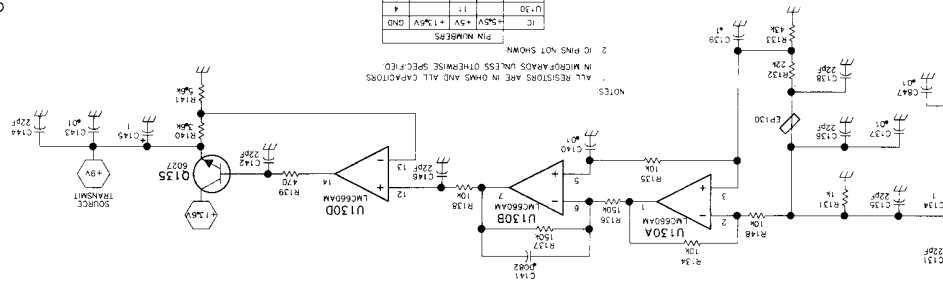
Figure 8-5 SCHEMATIC 1 OF 2

Company Confidential  
Johnson Data Telemetry Corporation  
Copyright 1997

7 0 = Digital Transistor  
BANDWIDTH DEPENDENT COMPONENT SEE PARTS LIST

IC	IC PIN NUMBERS
U130	1-15
U130A	1-15
U130B	1-15
U130C	1-15
U130D	1-15
U130E	1-15
U130F	1-15
U130G	1-15
U130H	1-15
U130I	1-15
U130J	1-15
U130K	1-15
U130L	1-15
U130M	1-15
U130N	1-15
U130O	1-15
U130P	1-15
U130Q	1-15
U130R	1-15
U130S	1-15
U130T	1-15
U130U	1-15
U130V	1-15
U130W	1-15
U130X	1-15
U130Y	1-15
U130Z	1-15

NOTES:  
1. ALL RESISTORS ARE IN OHMS AND ALL CAPACITORS  
2. IC PINS NOT SHOWN



TRANSMITTER

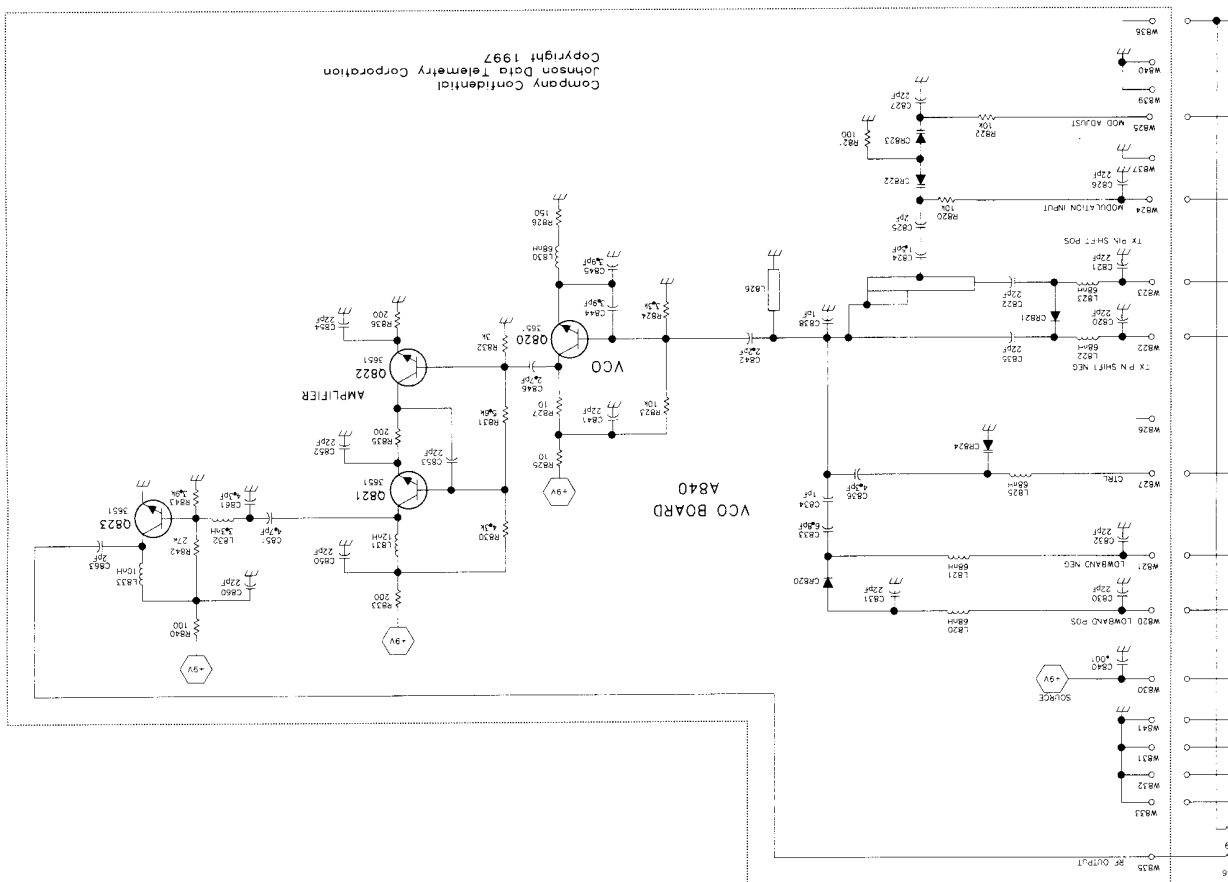
RECEIVER





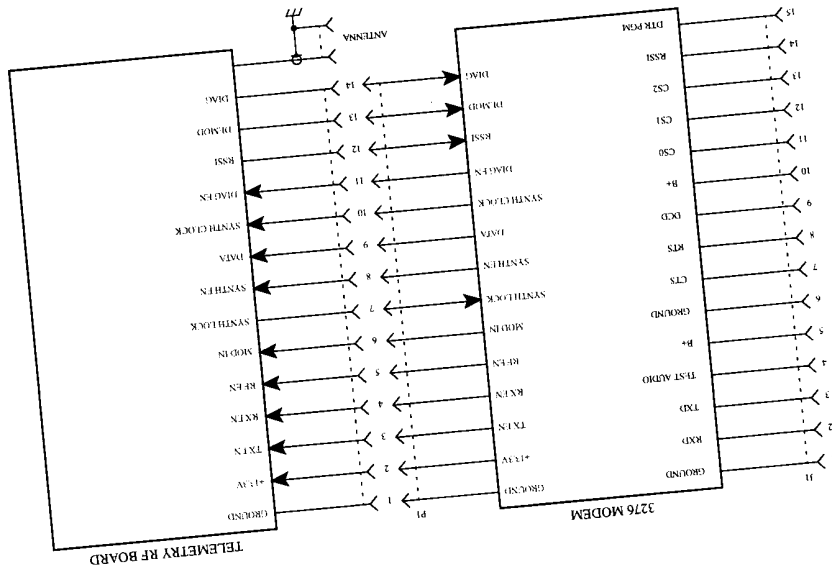


Figure 8-6 SCHEMATIC 2 OF 2



Company Confidential  
Copyright 1997  
Johnson Data Telemetry Corporation

Figure 8-2 MODEM INTERCONNECT



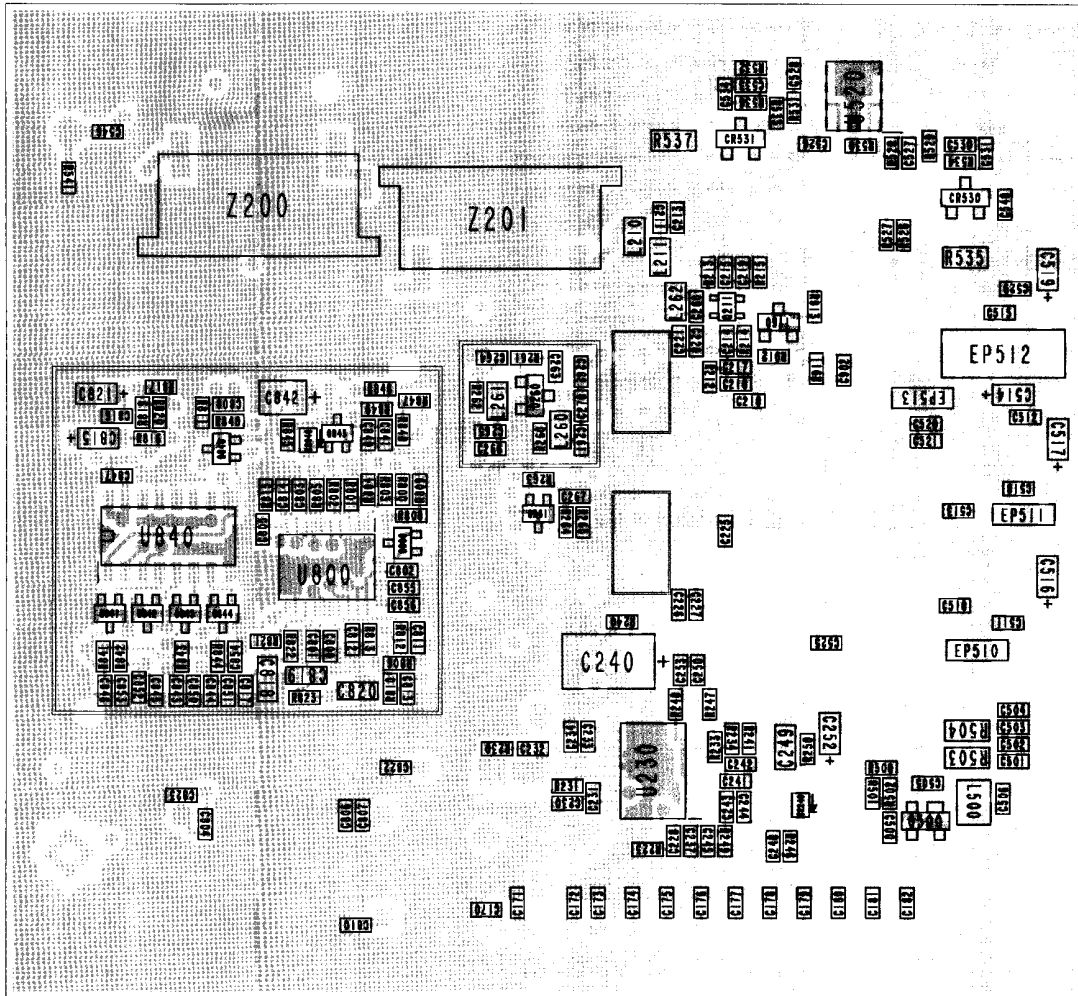


Figure 8-4 TRANSCIEVER COMPONENT LAYOUT (OPPOSITE COMPONENT SIDE VIEW)

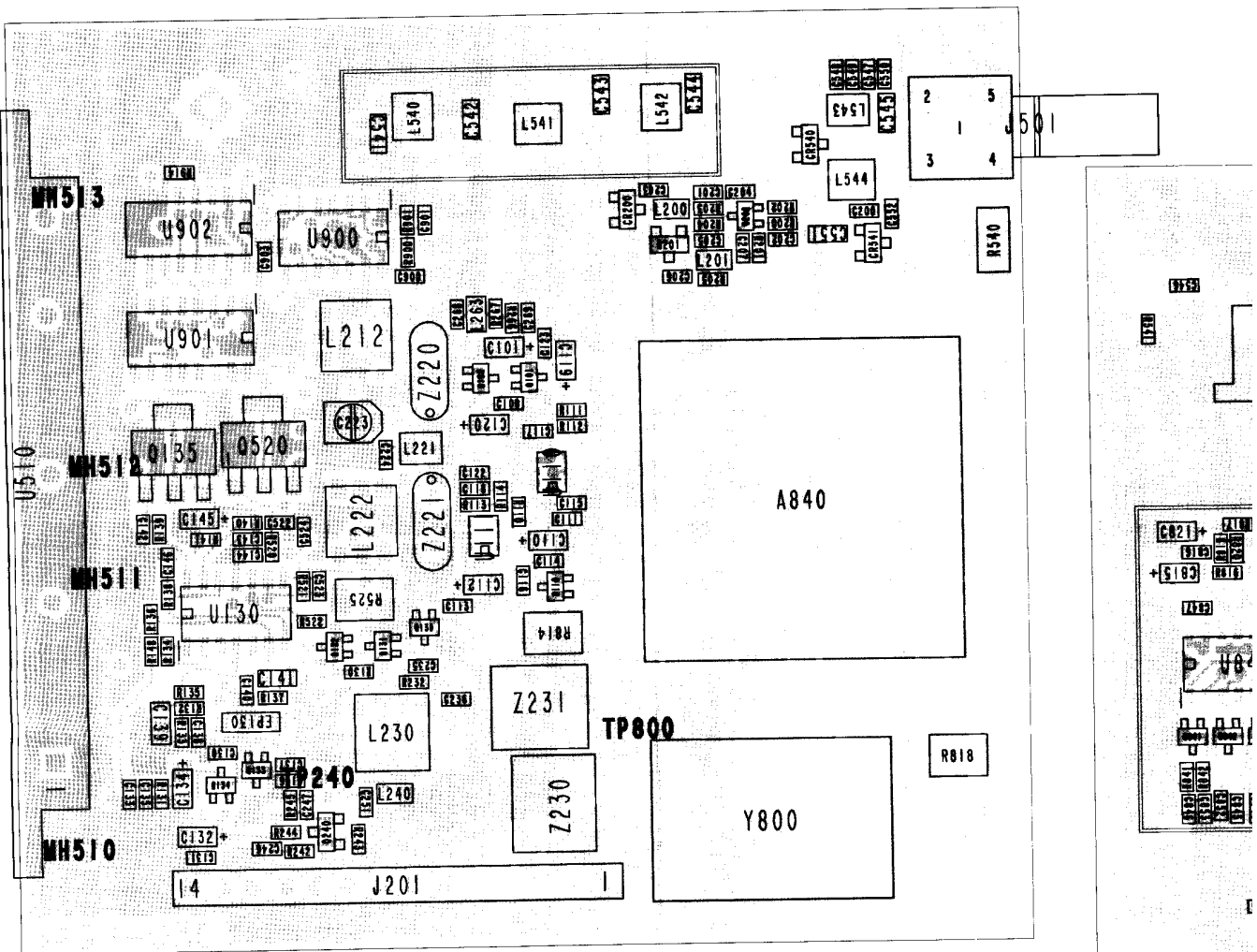


Figure 8-3 TRANSCEIVER COMPONENT LAYOUT (COMPONENT SIDE VIEW)