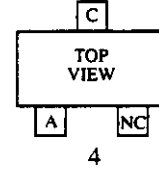
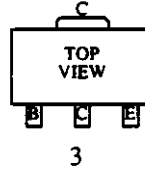
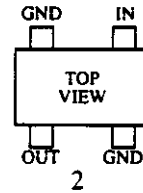
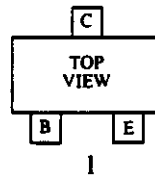
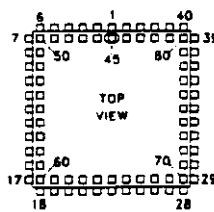
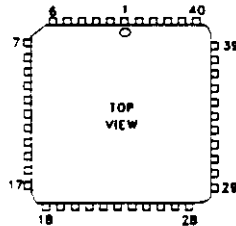
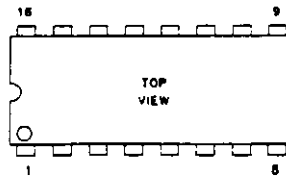
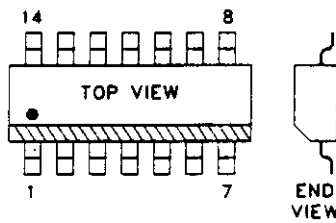


# SECTION 8 SCHEMATICS AND COMPONENT LAYOUTS

TRANSISTOR AND DIODE BASING REFERENCE TABLE		
TRANSISTORS		
Part Number	Basing Diagram	Identification
576-0003-634	1	
576-0003-636	1	
576-0003-640	2	
576-0003-651	1	
576-0003-658	1	
576-0006-027	3	
576-0013-032	1	
576-0013-046	1	
576-0013-700	1	
576-0013-701	1	
DIODES		
523-1504-001	4	
523-1504-002		5A
523-1504-016	4	
523-1504-023		A7
523-5005-022		S
523-5005-023		5LU



## INTEGRATED CIRCUITS





# SCHEMATICS AND LAYOUTS

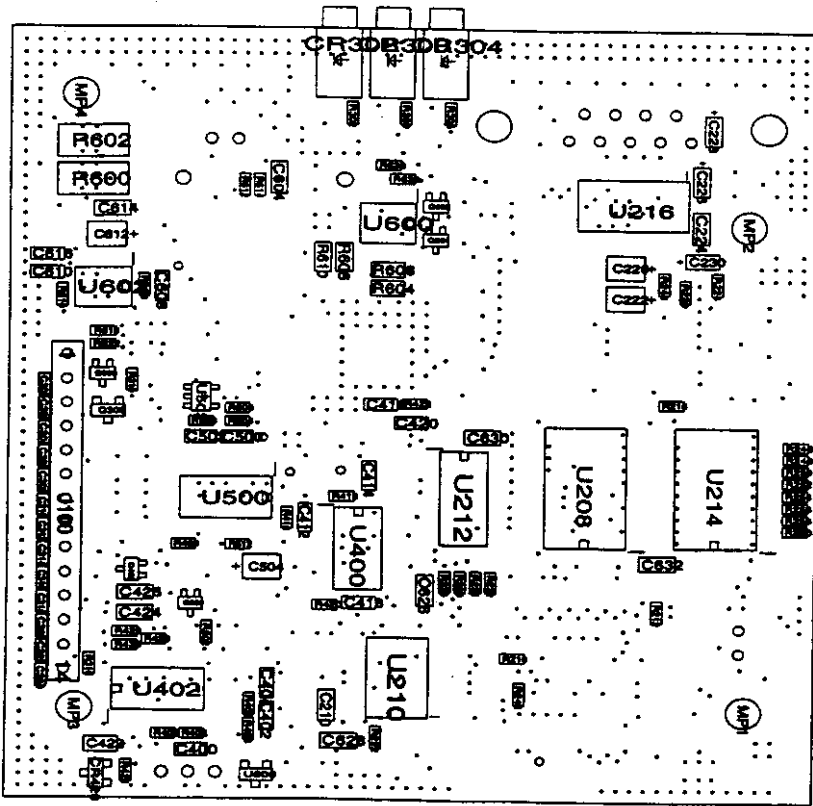


Figure 6-2 3286 Modem Board Component Layout (Bottom)

Company Confidential © 1998 Johnson Data Telemetry Corporation

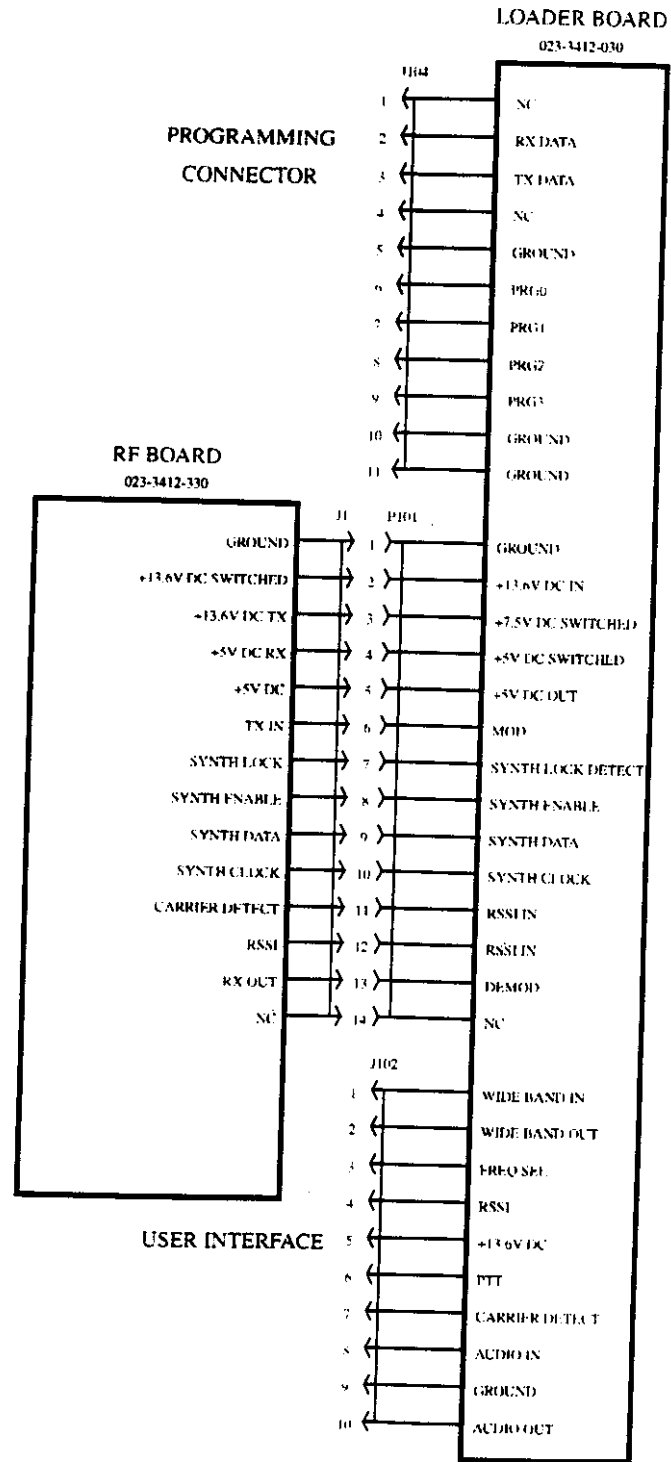
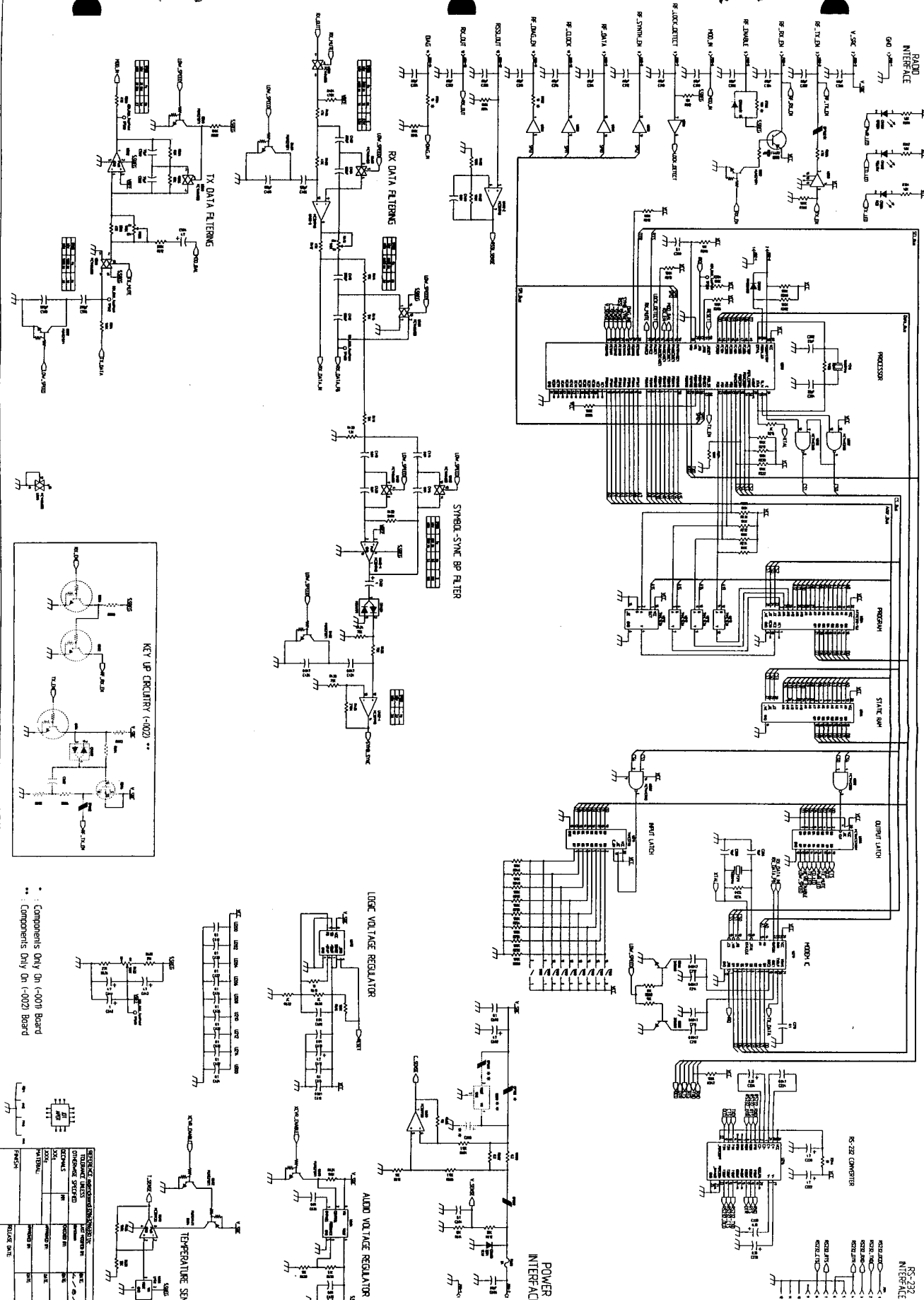


Figure 8-1 3422 INTERCONNECT



0-025-3286-330		REVISED	
DRAWING RELEASED		DATE	
1		1	

DRAWING INFORMATION	
TITLE	3286 Modern
DATE	3286 Modern
DESIGNED BY	D-025-3286-330
SCALE	AS SHOWN

Components Only On (-001) Board  
 Components Only On (-002) Board

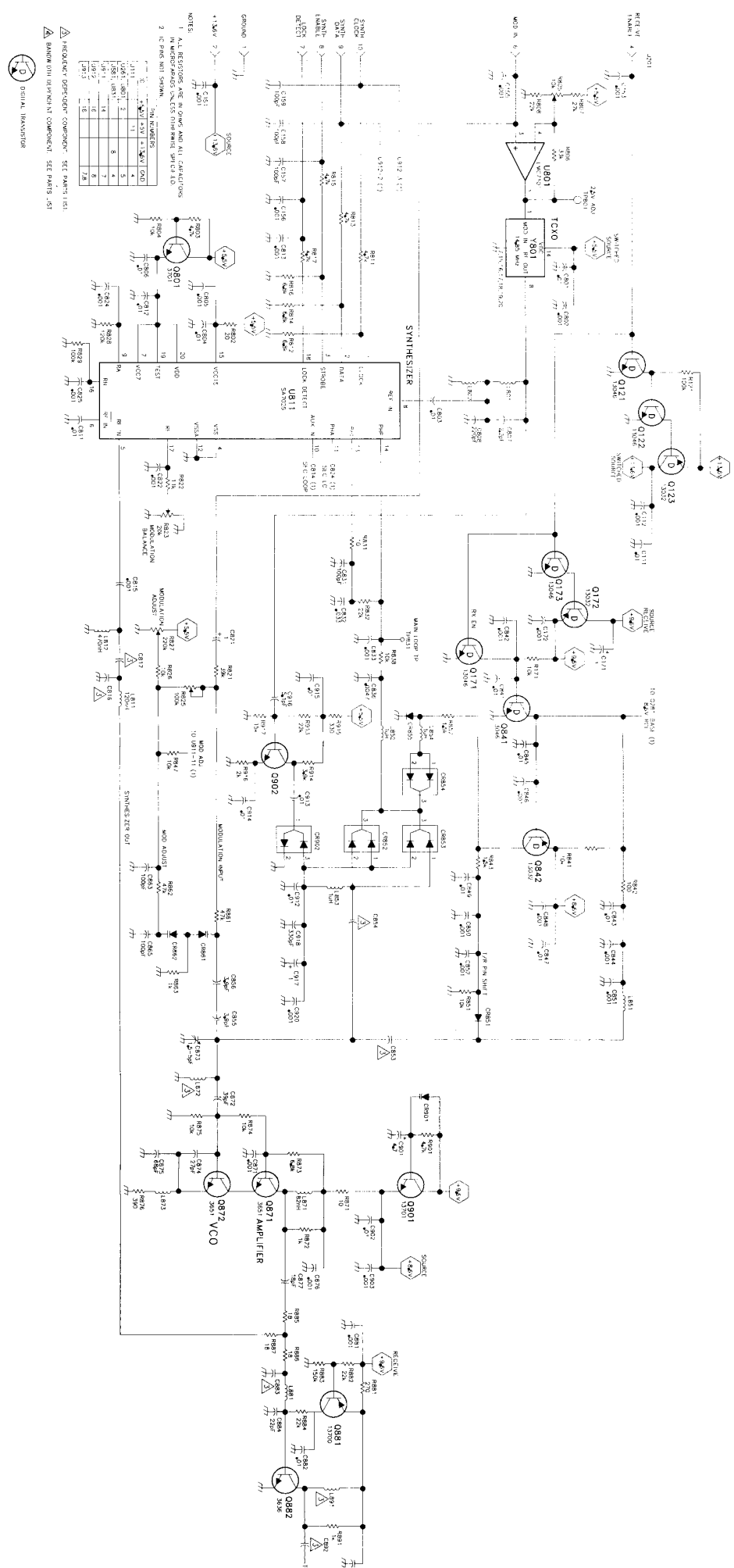
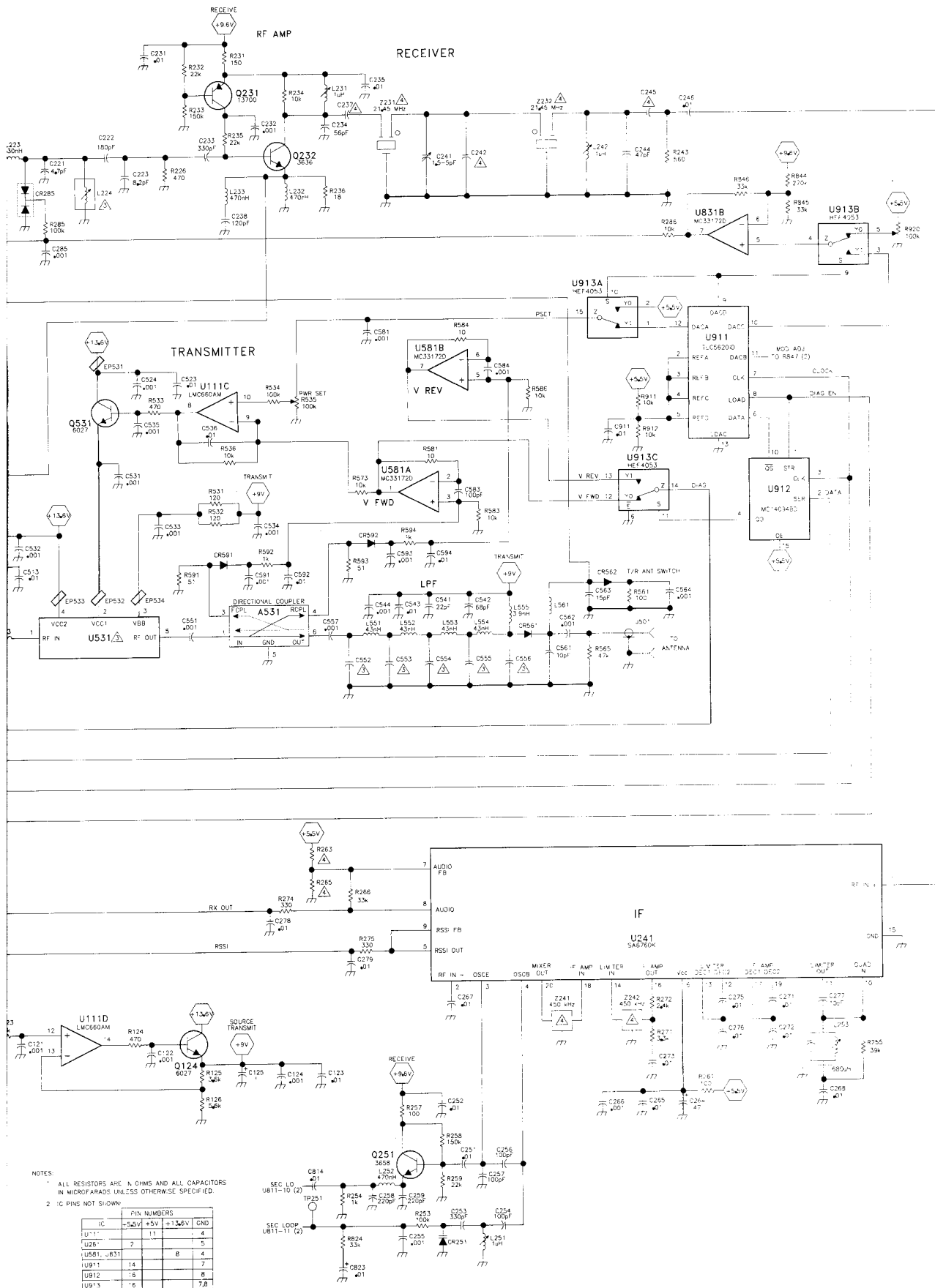


Figure 8-5 SCHEMATIC 2 OF 2





NOTES:  
 1. ALL RESISTORS ARE IN OHMS AND ALL CAPACITORS IN MICROFARADS UNLESS OTHERWISE SPECIFIED.  
 2. IC PINS NOT SHOWN

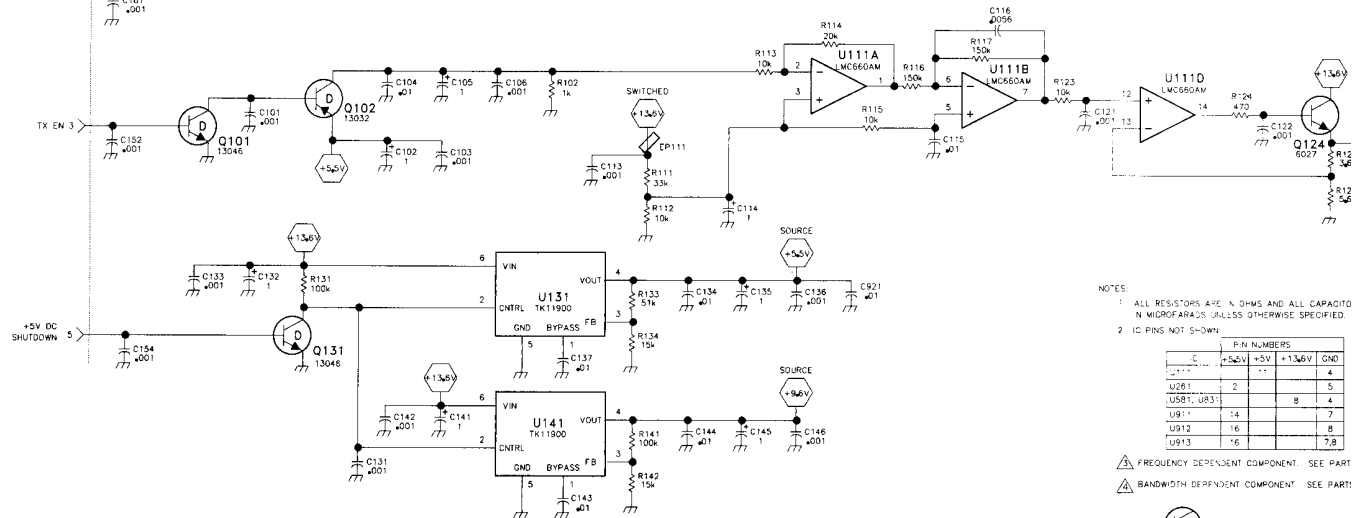
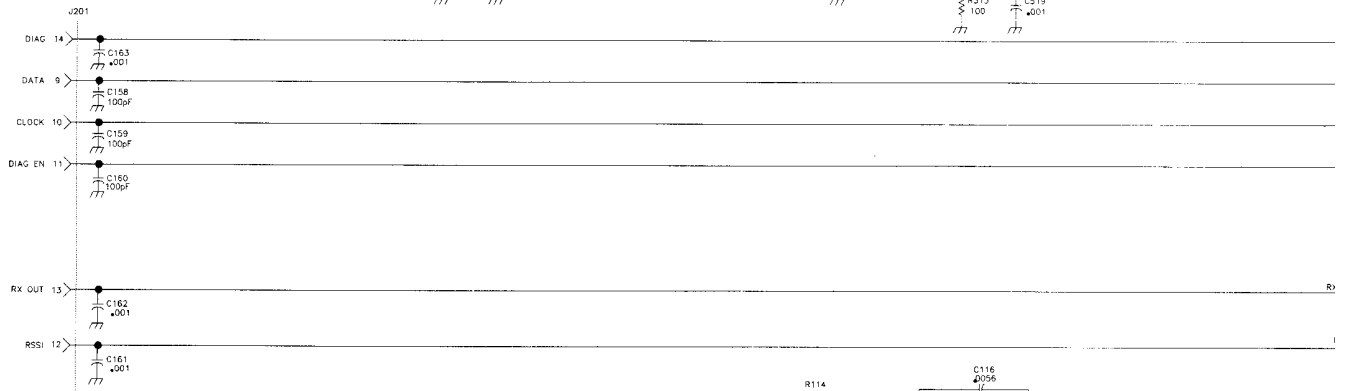
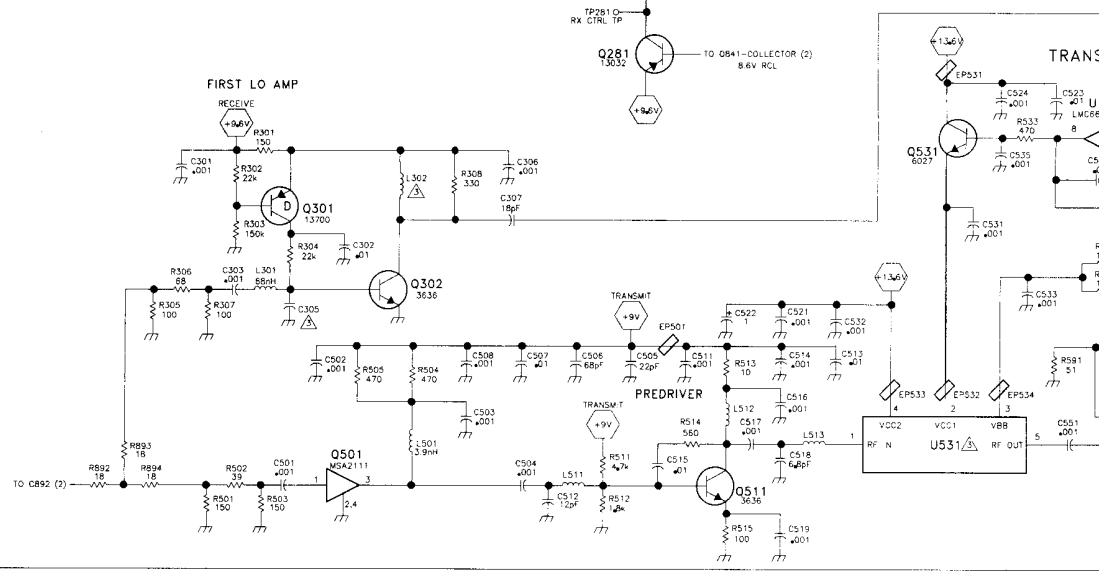
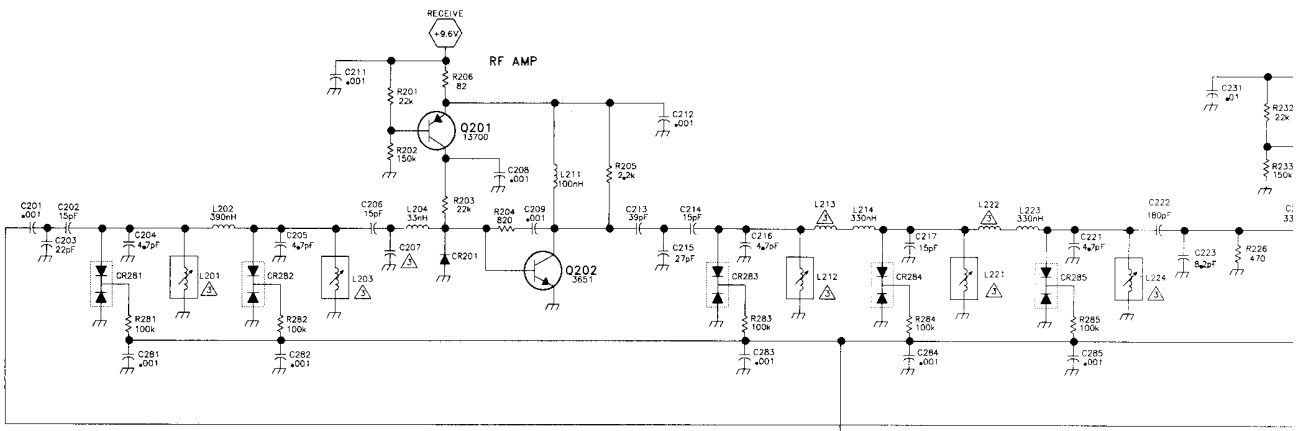
IC	VCC	VDD	VSS	GND
U111	+5.0V	+5V	+1.36V	GND
U126	7	13		4
U581, U831		8		4
U911	14			7
U912	16			8
U913	16			7,8

△ FREQUENCY DEPENDENT COMPONENT. SEE PARTS LIST.  
 △ BANDWIDTH DEPENDENT COMPONENT. SEE PARTS LIST.



Figure 8-4 SCHEMATIC 1 OF 2





NOTES:

1. ALL RESISTORS ARE 1% OHMS AND ALL CAPACITORS IN MICROFARADS UNLESS OTHERWISE SPECIFIED.

2. IC PINS NOT SHOWN

P-N NUMBERS				
C	+5.0V	+5V	+1.36V	GND
U111	2	15		4
U1261				5
U131, U133			9	4
U131				7
U112				8
U113				7, 8

△ FREQUENCY DEPENDENT COMPONENT. SEE PART

△ BANDWIDTH DEPENDENT COMPONENT. SEE PART



Figure 8-2 TRANSCIEVER COMPONENT LAYOUT (COMPONENT SIDE VIEW)

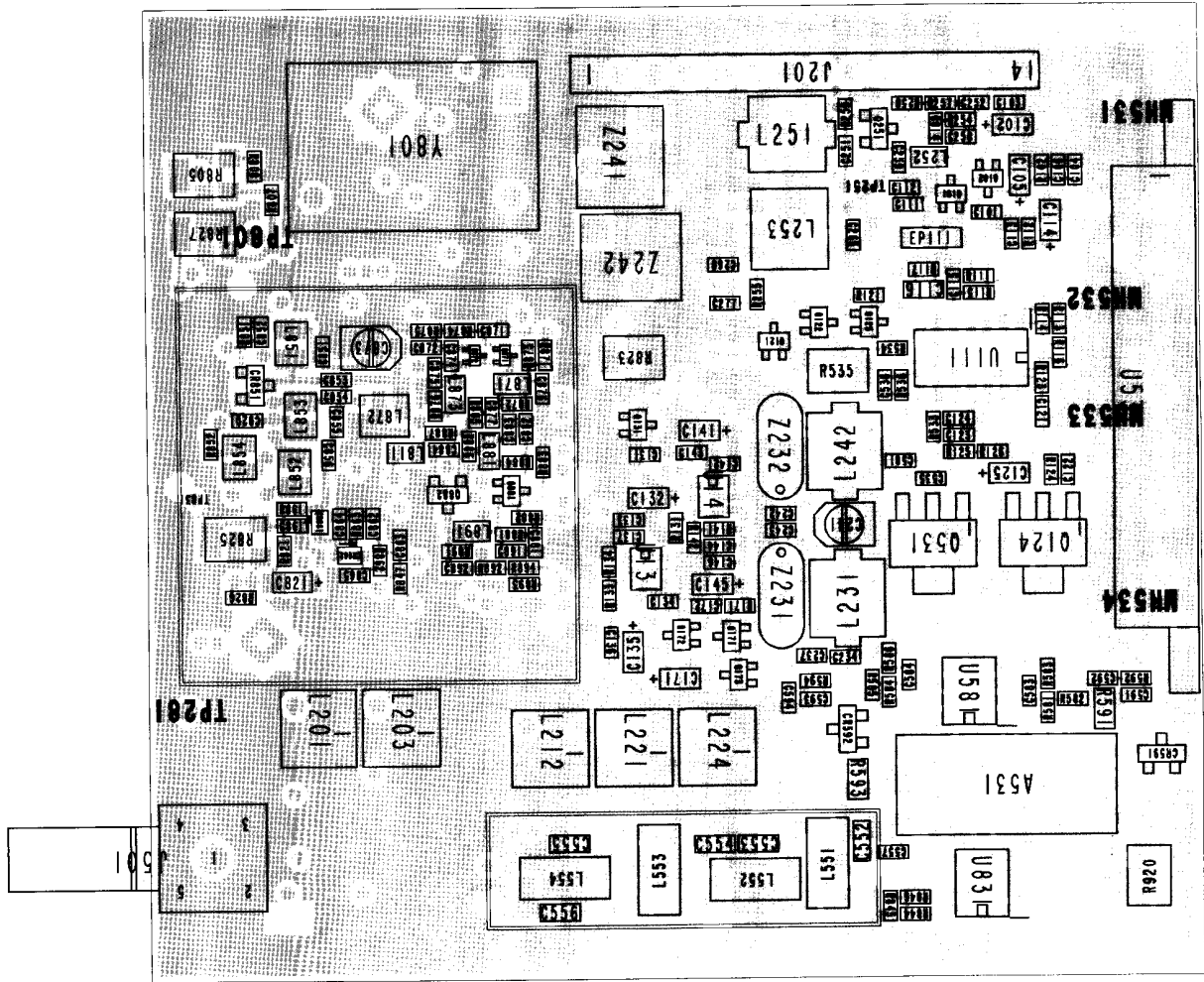
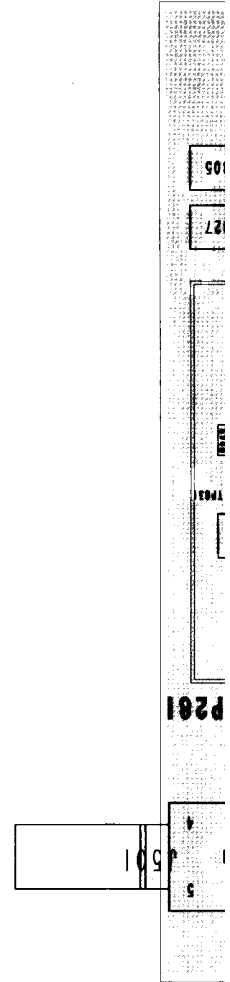
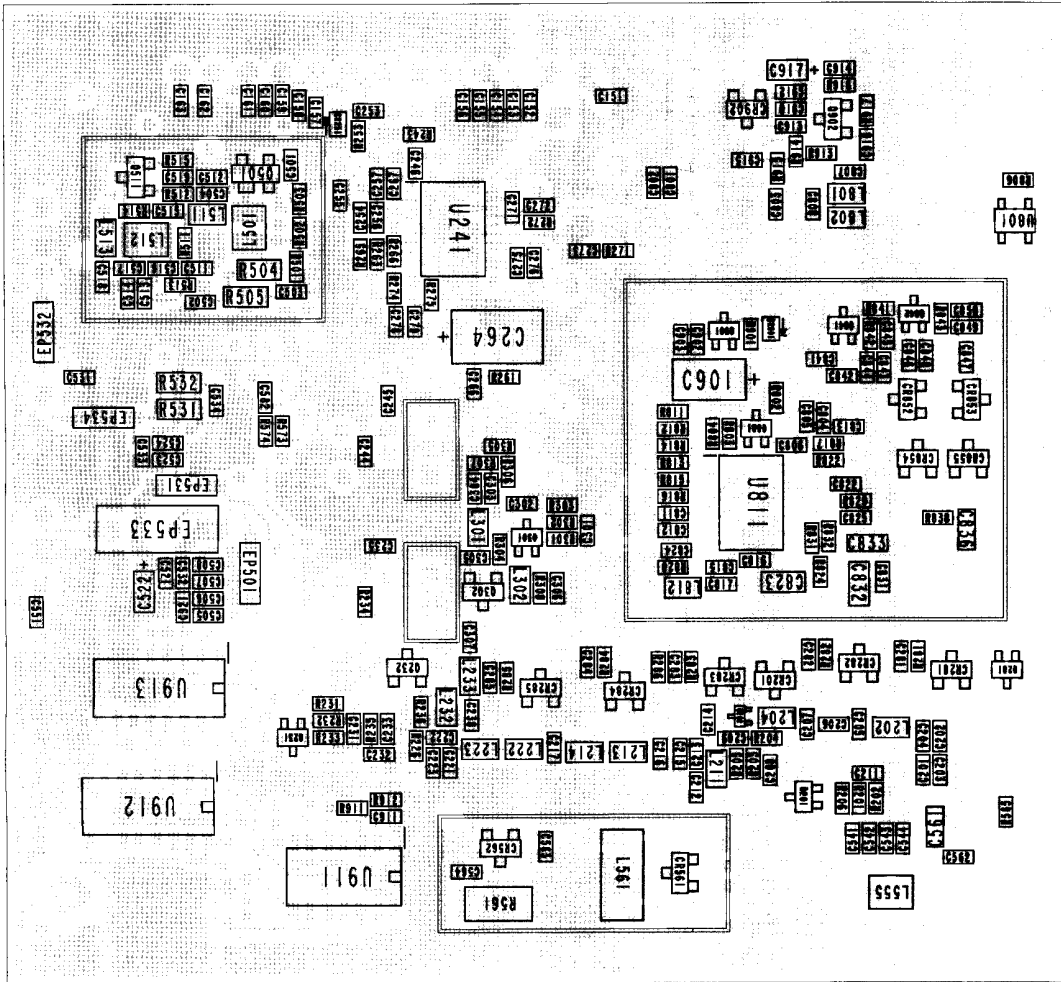


Figure 8-3. TRANSCIEVER COMPONENT LAYOUT (OPPOSITE COMPONENT SIDE VIEW)



PHOTOGRAPHS:

RULE PART NUMBER: 2.983 (g)

SEE ATTACHMENTS

FIG. 29: WPA324054-001  
JOURNAL DATA TELEMETRY

model: EL-4018  
Made in MEXICO, NO USA  
Canada: PENDING

S/N: 40145A170A 099031-5099

MANUAL: The DL-3422 manual contains the schematic for DL-3422 Transceiver and VCO  
SCHEMATIC: DL-3286 TELEMETRY MODEM

SEE ATTACHMENTS

---