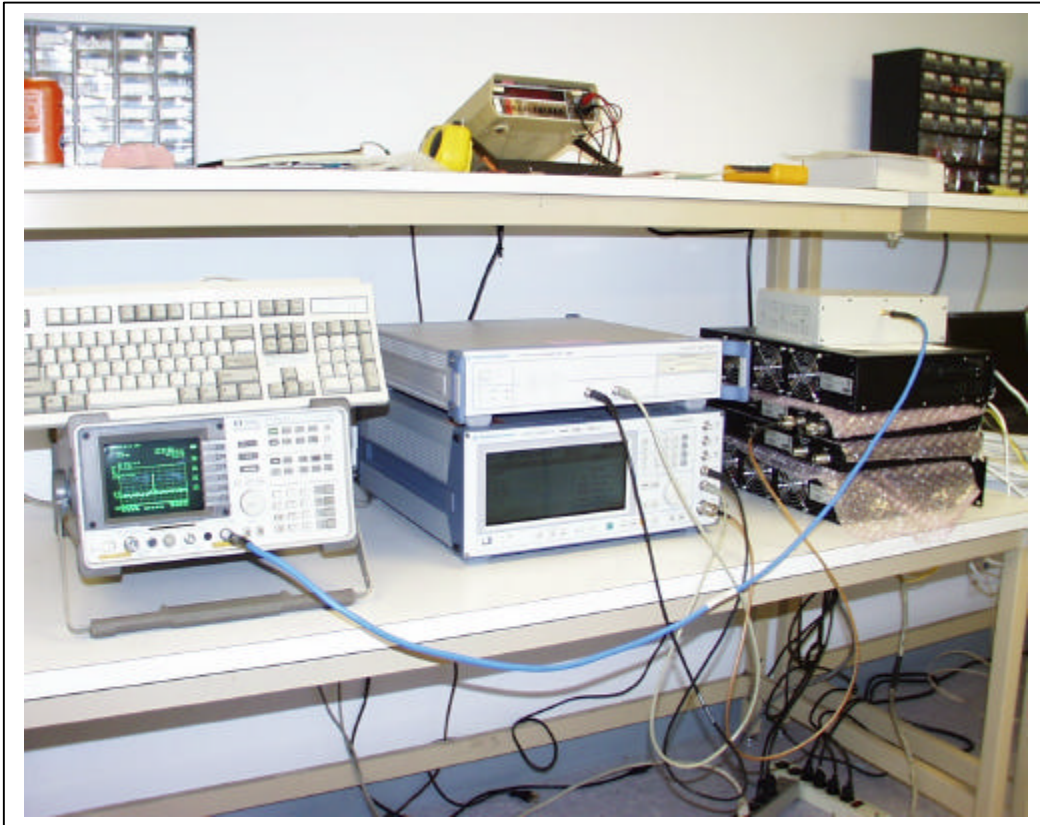


8.7 RADIATED EMISSION: part 15.209

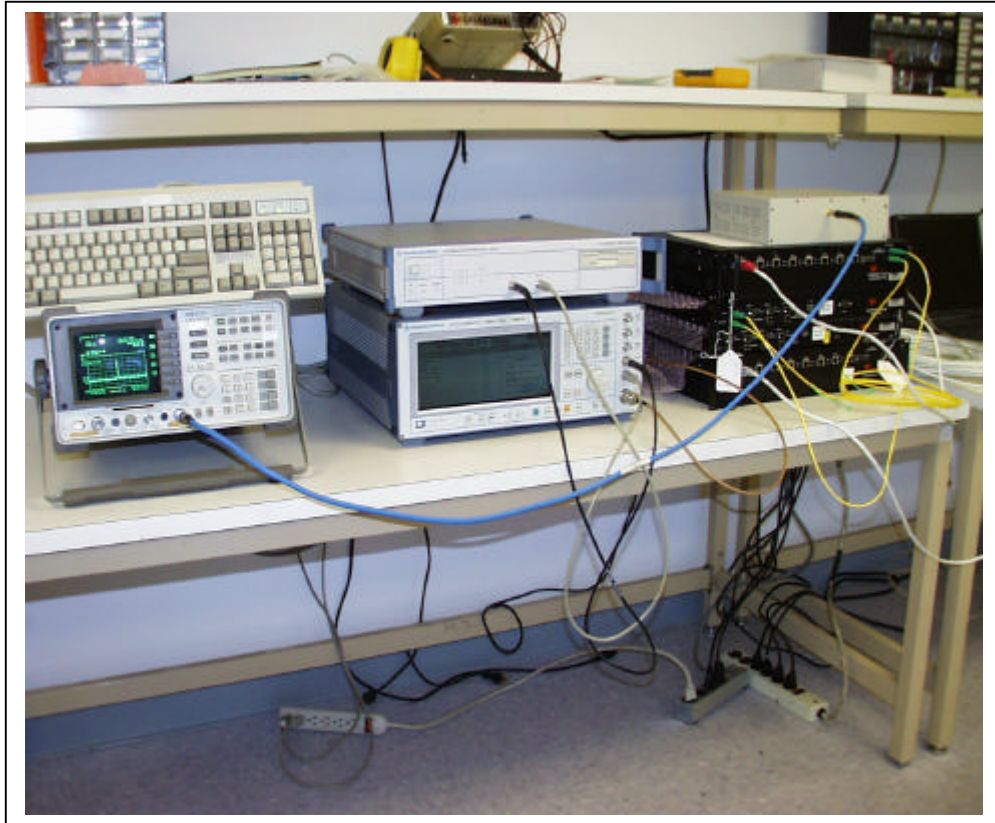
NOT APPLICABLE. The accompany digital port is designed for using in set up only, not for daily operation, and after the set up no cable will be attached to this port.

9. ATTACHMENT

9.1. EUT SETUP PHOTOS



CONDUCTED MEASUREMENT



INTERMODULATED MEASUREMENT



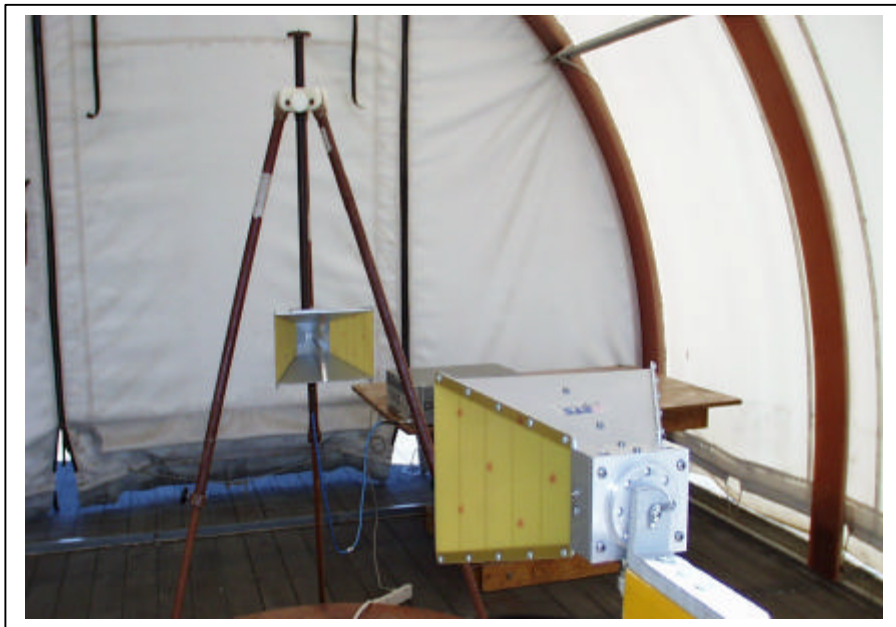
FUNDAMENTAL MEASUREMENTS (800MHz)



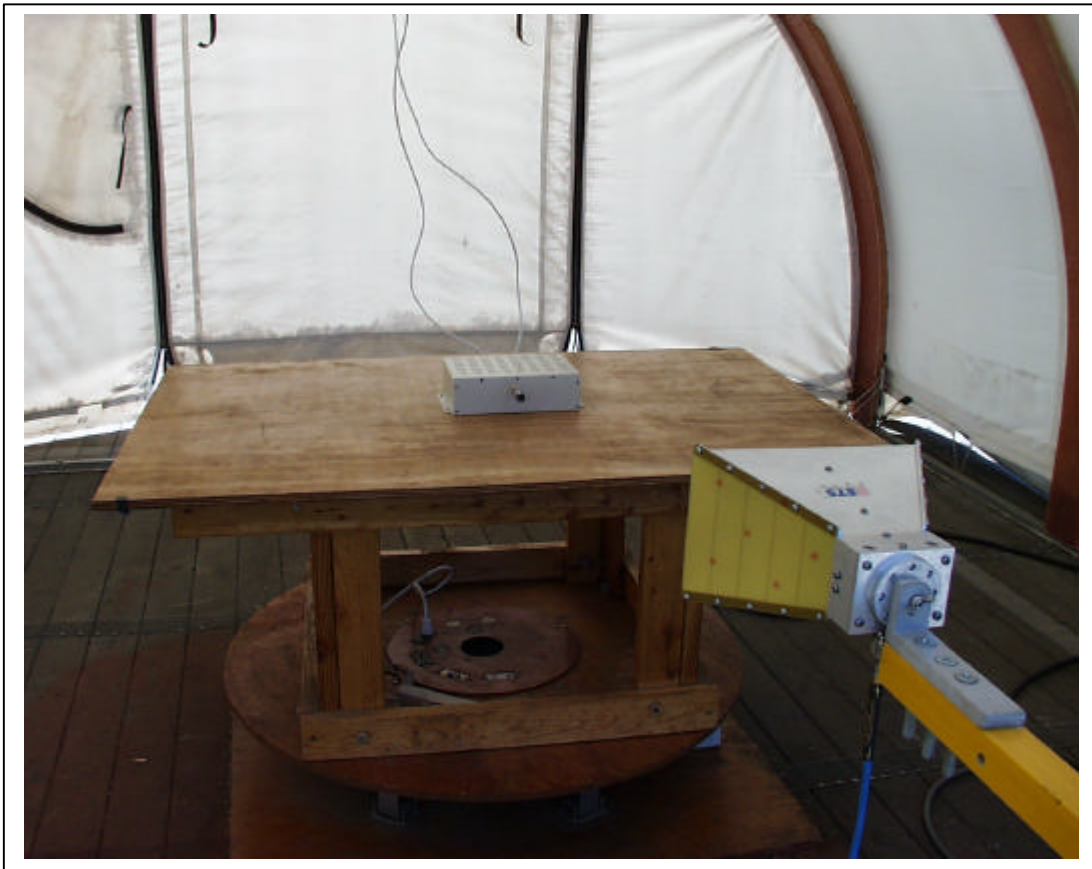
FUNDAMENTAL MEASUREMENTS (1900MHz)



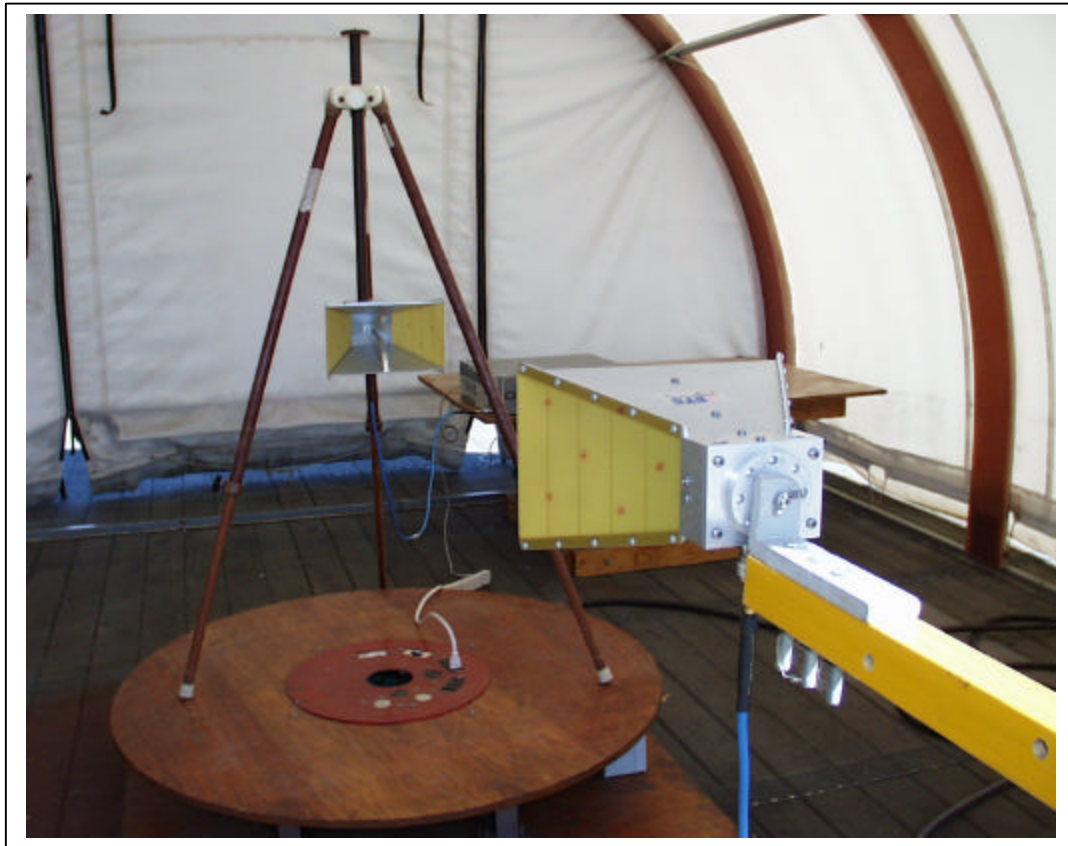
SUBSTITUTION MEASUREMENTS (800MHz)



SUBSTITUTION MEASUREMENTS (1900MHz)



HARMONIC & SPURIOUS MEASUREMENT



SUBSTITUTION METHOD



FREQUENCY VS. TEMPERATURE



FREQUENCY VS. VOLTAGE