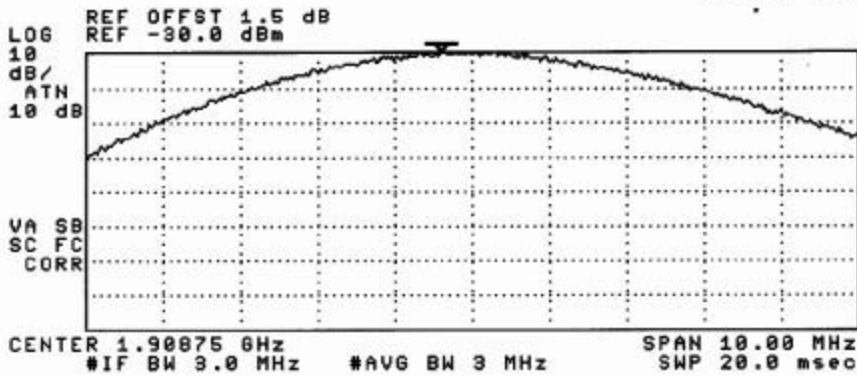
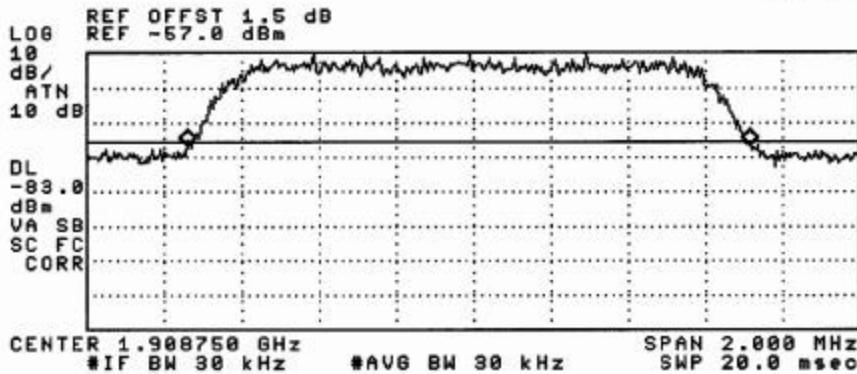


14:26:22 MAY 30, 2002
 LGC 1900M (CDMA OUTPUT POWER) Uplink, Hi Ch.
 ACTV DET: PEAK
 MEAS DET: PEAK QP AVG
 MKR 1.90835 GHz
 -29.88 dBm



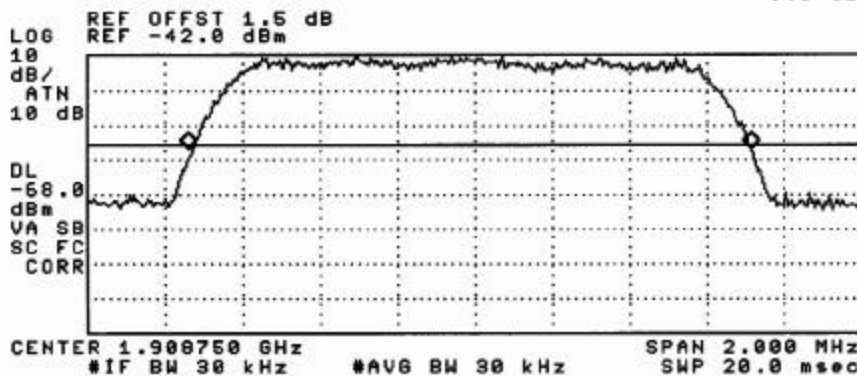
191

14:30:39 MAY 30, 2002
 LGC 1900M (CDMA INPUT BANDWIDTH) Uplink, Hi Ch.
 ACTV DET: PEAK
 MEAS DET: PEAK QP AVG
 MKR 1.455 MHz
 .24 dB



192

14:32:06 MAY 30, 2002
 LGC 1900M (CDMA OUTPUT BANDWIDTH) Uplink, Hi Ch.
 ACTV DET: PEAK
 MEAS DET: PEAK QP AVG
 MKR 1.455 MHz
 .40 dB

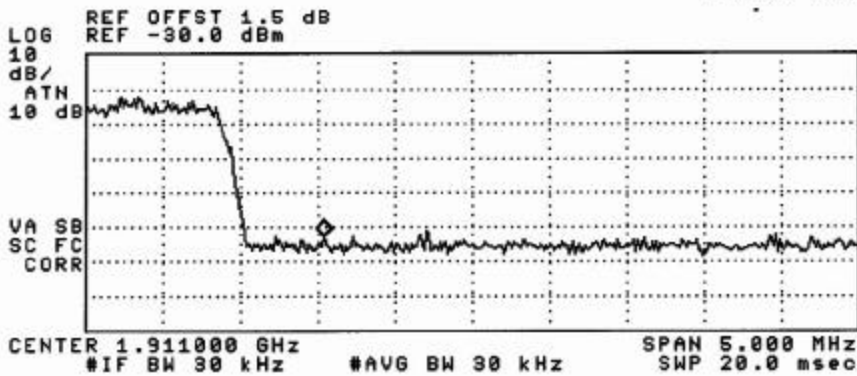


193

14:38:55 MAY 30, 2002

LGC 1900M (CDMA TOP BLOCK EDGE) Uplink, Hi Ch.

ACTV DET: PEAK
MEAS DET: PEAK QP AVG
MKR 1.910038 GHz
-83.00 dBm

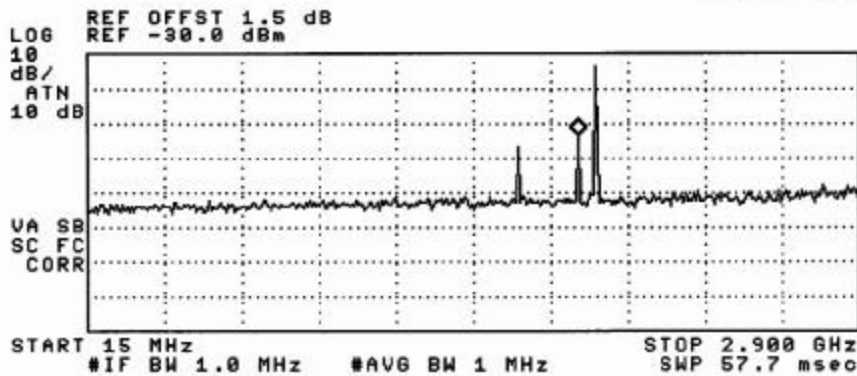


194

14:39:55 MAY 30, 2002

LGC 1900M (CDMA OUT-OF-BAND) Uplink, Hi Ch.

ACTV DET: PEAK
MEAS DET: PEAK QP AVG
MKR 1.847 GHz
-53.00 dBm

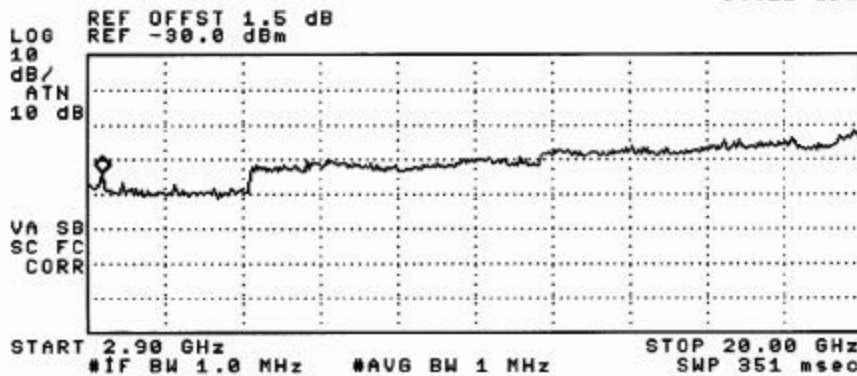


195

14:40:25 MAY 30, 2002

LGC 1900M (CDMA OUT-OF-BAND) Uplink, Hi Ch.

ACTV DET: PEAK
MEAS DET: PEAK QP AVG
MKR 3.24 GHz
-64.21 dBm

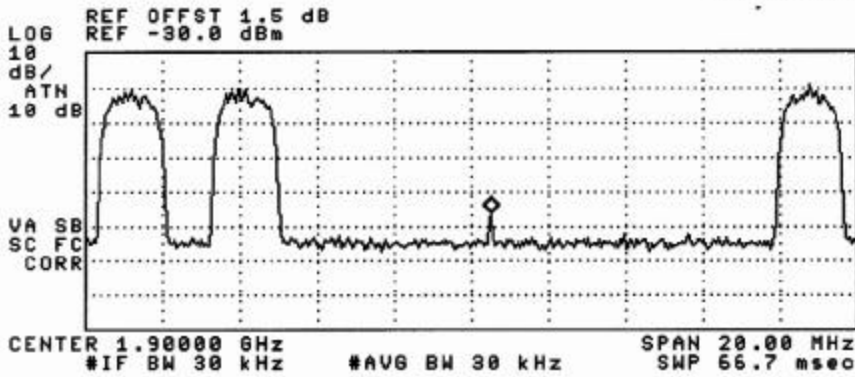


196

14:53:53 MAY 30, 2002

L6C 1900M (CDMA INTERMOD) Uplink, Hi Ch.

ACTV DET: PEAK
MEAS DET: PEAK QP AVG
MKR 1.90050 GHz
-76.39 dBm

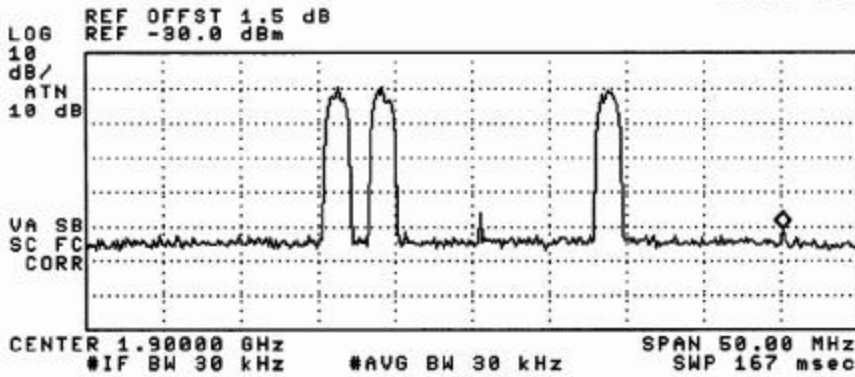


197

14:54:16 MAY 30, 2002

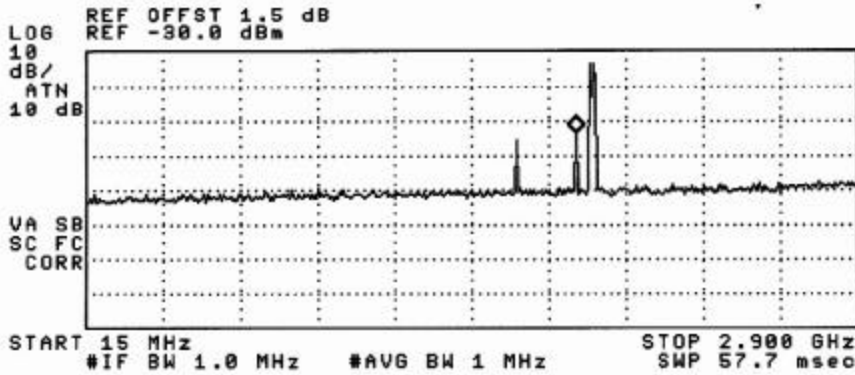
L6C 1900M (CDMA INTERMOD) Uplink, Hi Ch.

ACTV DET: PEAK
MEAS DET: PEAK QP AVG
MKR 1.92013 GHz
-80.70 dBm



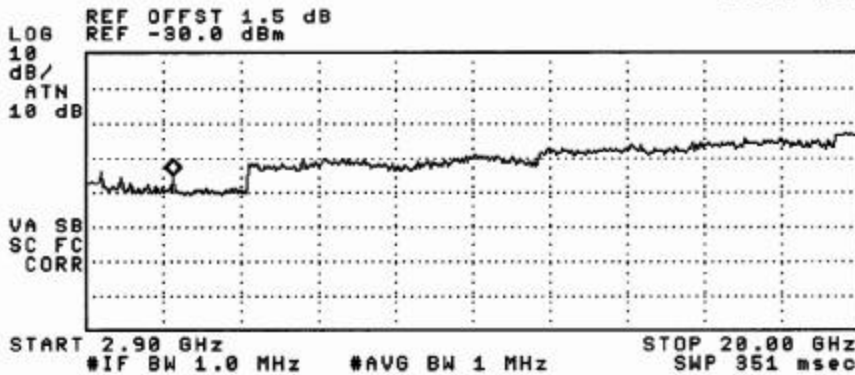
198

14:55:05 MAY 30, 2002
 L6C 1900M (CDMA INTERMOD OUT-OF-BAND) Uplink, Hi Ch.
 ACTV DET: PEAK
 MEAS DET: PEAK QP AVG
 MKR 1.847 GHz
 -53.74 dBm



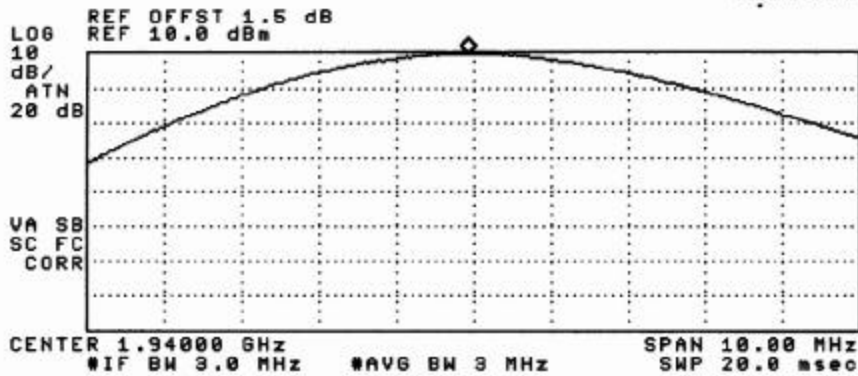
199

14:55:27 MAY 30, 2002
 L6C 1900M (CDMA INTERMOD OUT-OF-BAND) Uplink, Hi Ch.
 ACTV DET: PEAK
 MEAS DET: PEAK QP AVG
 MKR 4.82 GHz
 -65.34 dBm



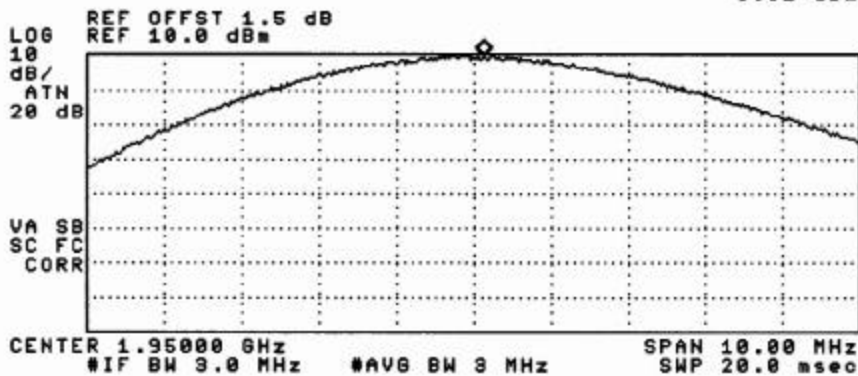
200

10:29:04 MAY 31, 2002
LGC 1900M (EDGE OUTPUT POWER, A-D) Downlink, Mid Ch.
ACTV DET: PEAK
MEAS DET: PEAK QP AVG
MKR 1.93993 GHz
9.66 dBm



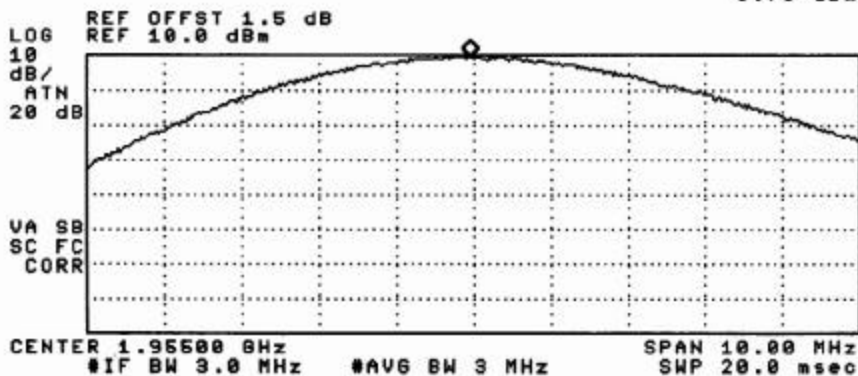
201

10:30:52 MAY 31, 2002
LGC 1900M (EDGE OUTPUT POWER, D-B) Downlink, Mid Ch.
ACTV DET: PEAK
MEAS DET: PEAK QP AVG
MKR 1.95013 GHz
9.62 dBm



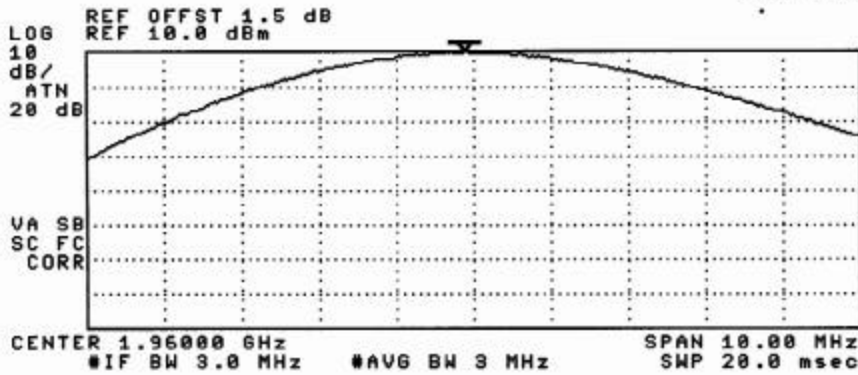
202

10:31:27 MAY 31, 2002
LGC 1900M (EDGE OUTPUT POWER, D-B) Downlink, Mid Ch.
ACTV DET: PEAK
MEAS DET: PEAK QP AVG
MKR 1.95495 GHz
9.78 dBm



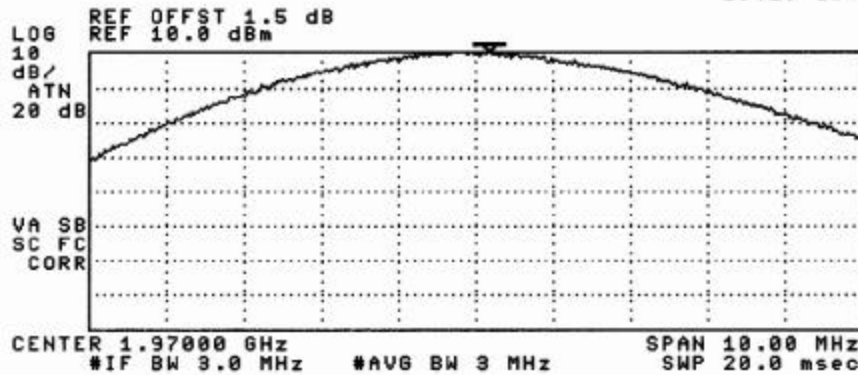
203

10:33:06 MAY 31, 2002
L6C 1900M (EDGE OUTPUT POWER, B-E) Downlink, Mid Ch.
ACTV DET: PEAK
MEAS DET: PEAK QP AVG
MKR 1.95988 GHz
9.98 dBm



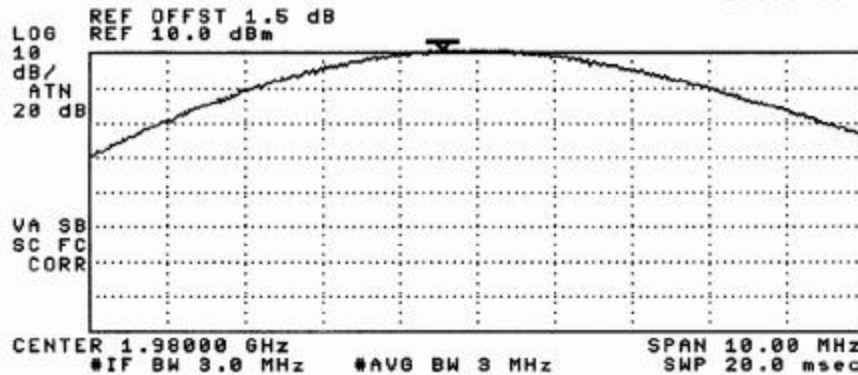
204

10:34:19 MAY 31, 2002
L6C 1900M (EDGE OUTPUT POWER, E-F) Downlink, Mid Ch.
ACTV DET: PEAK
MEAS DET: PEAK QP AVG
MKR 1.97818 GHz
10.10 dBm



205

10:35:21 MAY 31, 2002
L6C 1900M (EDGE OUTPUT POWER, F-C) Downlink, Mid Ch.
ACTV DET: PEAK
MEAS DET: PEAK QP AVG
MKR 1.97955 GHz
10.86 dBm



206

15:45:02 MAY 31, 2002

L6C 1900M (EDGE OUTPUT POWER) Downlink, Lo Ch.

ACTV DET: PEAK
MEAS DET: PEAK QP AVG
MKR 1.93023 GHz
9.95 dBm

HOLD

LOG REF OFFST 1.5 dB
10 REF 10.0 dBm
dB/

ATN
20 dB

VA SB
SC FC
CORR

CENTER 1.93050 GHz SPAN 10.00 MHz
#IF BW 3.0 MHz #AVG BW 3 MHz SWP 20.0 msec

DSP LINE
ON OFF

Change
Title

Limit
Lines

ANALOG+
ON OFF

More
1 of 2

207

15:47:00 MAY 31, 2002

L6C 1900M (EDGE INPUT BANDWIDTH) Downlink, Lo Ch.

ACTV DET: PEAK
MEAS DET: PEAK QP AVG
MKR 357.5 kHz
-.60 dB

LOG REF OFFST 1.5 dB
10 REF -10.0 dBm
dB/

ATN
10 dB

DL
-36.0
dBm

VA SB
SC FC
CORR

CENTER 1.9305000 GHz SPAN 500.0 kHz
#IF BW 10 kHz #AVG BW 10 kHz SWP 30.0 msec

208

15:51:07 MAY 31, 2002

L6C 1900M (EDGE OUTPUT BANDWIDTH) Downlink, Lo Ch.

ACTV DET: PEAK
MEAS DET: PEAK QP AVG
MKR 357.5 kHz
.97 dB

LOG REF OFFST 1.5 dB
10 REF 3.0 dBm
dB/

ATN
20 dB

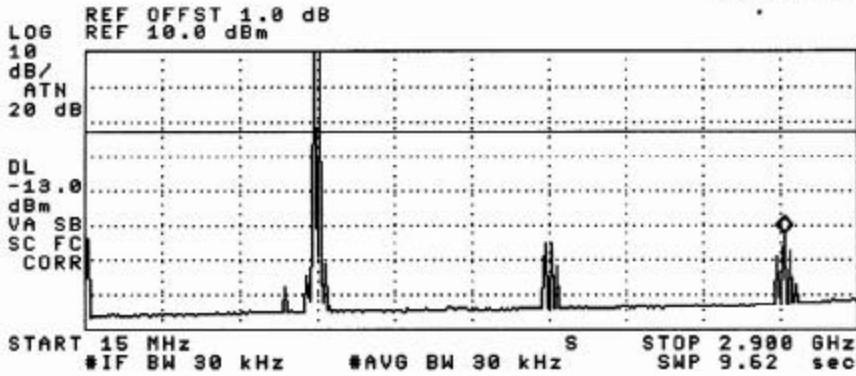
DL
-23.0
dBm

VA SB
SC FC
CORR

CENTER 1.9305000 GHz SPAN 500.0 kHz
#IF BW 10 kHz #AVG BW 10 kHz SWP 30.0 msec

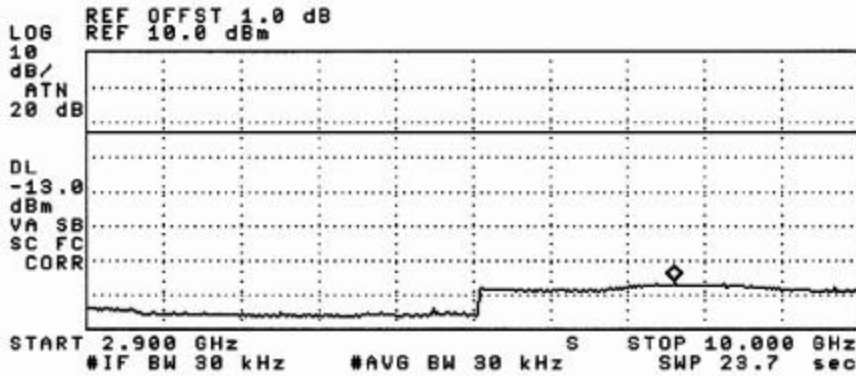
209

13:32:04 MAY 31, 2002
 LGC 800MHz (AMPS INTERMOD OUT-OF-BAND) Downlink
 ACTV DET: PEAK
 MEAS DET: PEAK QP AVG
 MKR 2.626 GHz
 -42.12 dBm



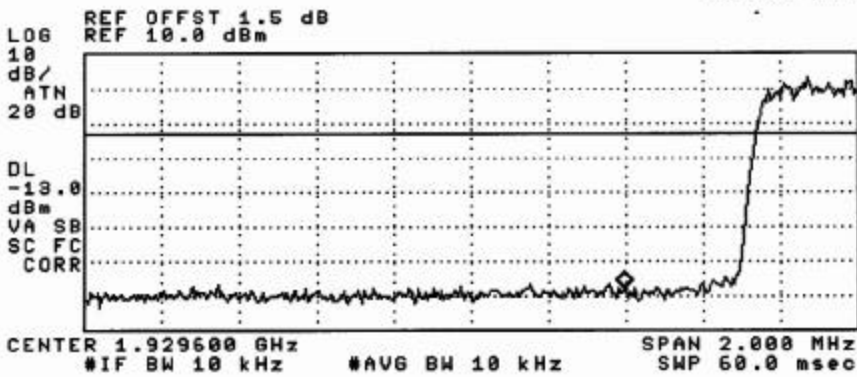
21

13:33:23 MAY 31, 2002
 LGC 800MHz (AMPS INTERMOD OUT-OF-BAND) Downlink
 ACTV DET: PEAK
 MEAS DET: PEAK QP AVG
 MKR 8.296 GHz
 -56.45 dBm



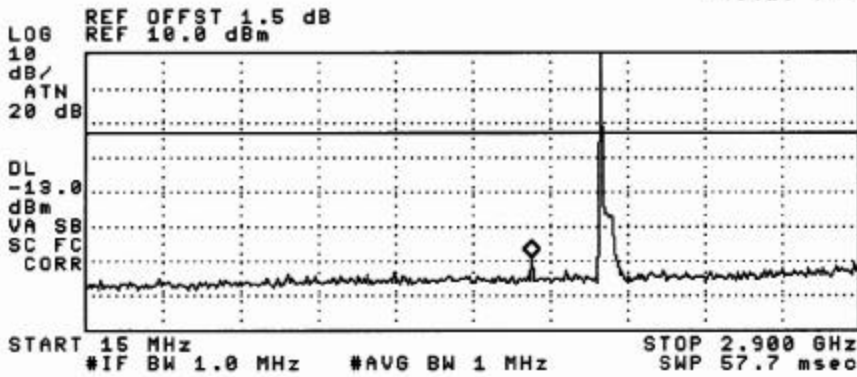
22

15:53:08 MAY 31, 2002
 L6C 1900M (EDGE BOTTOM BLOCK EDGE) Downlink, Lo Ch.
 ACTV DET: PEAK
 MEAS DET: PEAK QP AVG
 MKR 1.929995 GHz
 -57.94 dBm



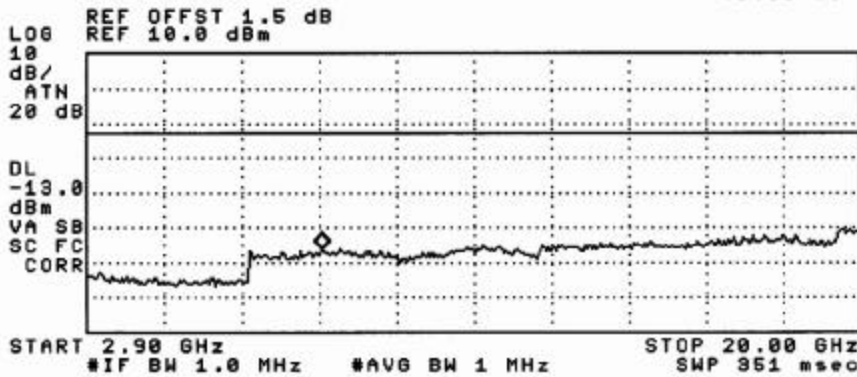
210

15:53:51 MAY 31, 2002
 L6C 1900M (EDGE OUT-OF-BAND) Downlink, Lo Ch.
 ACTV DET: PEAK
 MEAS DET: PEAK QP AVG
 MKR 1.674 GHz
 -49.13 dBm



211

15:54:19 MAY 31, 2002
 L6C 1900M (EDGE OUT-OF-BAND) Downlink, Lo Ch.
 ACTV DET: PEAK
 MEAS DET: PEAK QP AVG
 MKR 8.07 GHz
 -46.38 dBm



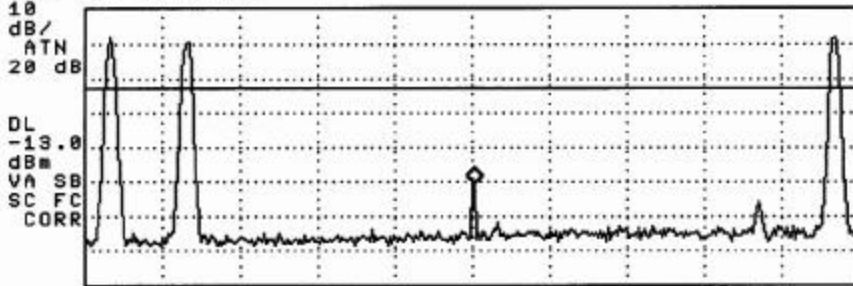
212

15:40:58 MAY 31, 2002

LGC 1900M (EDGE INTERMOD) Downlink, Lo Ch.

ACTV DET: PEAK
MEAS DET: PEAK QP AVG
MKR 1.94005 GHz
-40.98 dBm

LOG REF OFFST 1.5 dB
REF 10.0 dBm



CENTER 1.94000 GHz SPAN 20.00 MHz
#IF BW 10 kHz #AVG BW 10 kHz SWP 600 msec

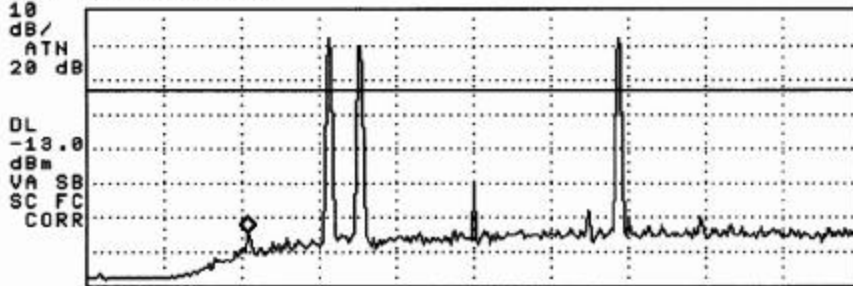
213

15:41:19 MAY 31, 2002

LGC 1900M (EDGE INTERMOD) Downlink, Lo Ch.

ACTV DET: PEAK
MEAS DET: PEAK QP AVG
MKR 1.92538 GHz
-54.76 dBm

LOG REF OFFST 1.5 dB
REF 10.0 dBm



CENTER 1.94000 GHz SPAN 50.00 MHz
#IF BW 10 kHz #AVG BW 10 kHz SWP 1.50 sec

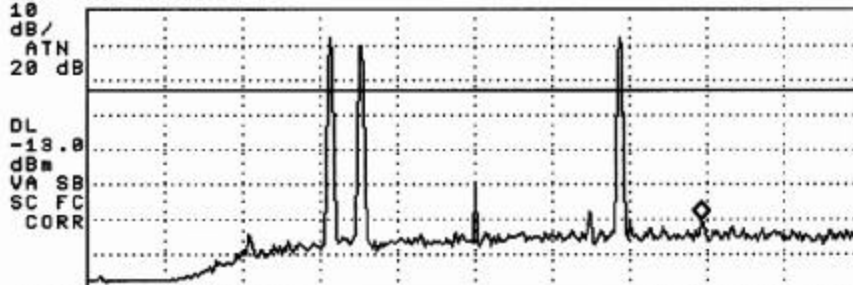
214

15:41:34 MAY 31, 2002

LGC 1900M (EDGE INTERMOD) Downlink, Lo Ch.

ACTV DET: PEAK
MEAS DET: PEAK QP AVG
MKR 1.95463 GHz
-50.15 dBm

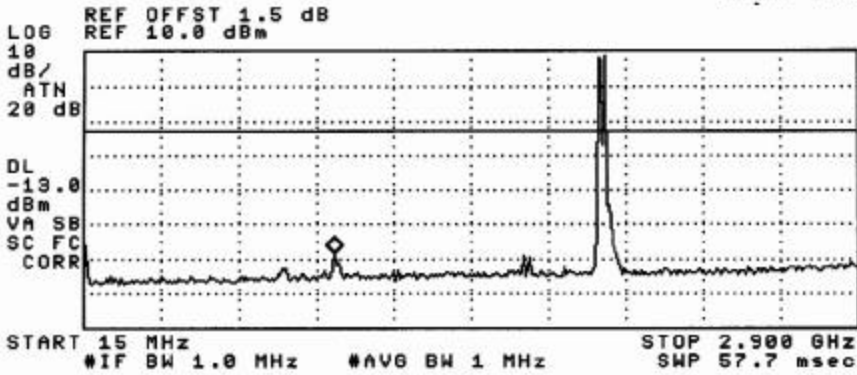
LOG REF OFFST 1.5 dB
REF 10.0 dBm



CENTER 1.94000 GHz SPAN 50.00 MHz
#IF BW 10 kHz #AVG BW 10 kHz SWP 1.50 sec

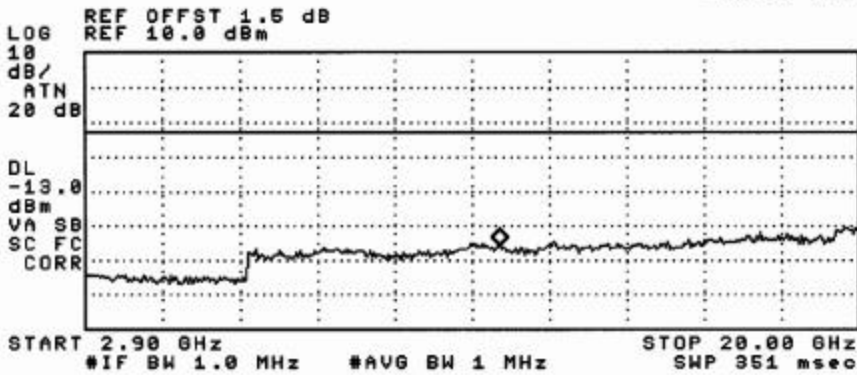
215

15:42:25 MAY 31, 2002
 LGC 1900M (EDGE INTERMOD OUT-OF-BAND) Downlink, Lo Ch
 ACTV DET: PEAK
 MEAS DET: PEAK QP AVG
 MKR 945 MHz
 -48.32 dBm



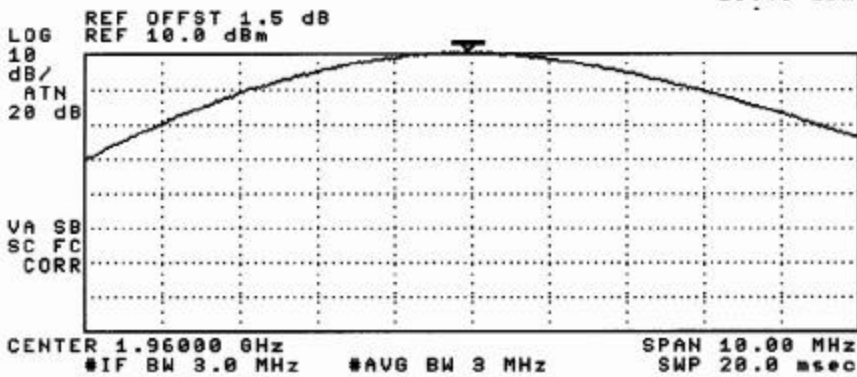
216

15:42:49 MAY 31, 2002
 LGC 1900M (EDGE INTERMOD OUT-OF-BAND) Downlink, Lo Ch
 ACTV DET: PEAK
 MEAS DET: PEAK QP AVG
 MKR 12.05 GHz
 -45.88 dBm



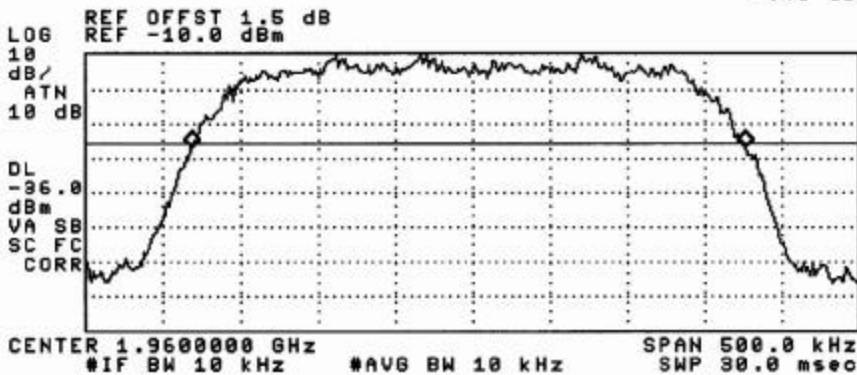
217

15:29:00 MAY 31, 2002
 ↗ LGC 1900M (EDGE OUTPUT POWER) Downlink, Mid Ch.
 ACTV DET: PEAK
 MEAS DET: PEAK QP AVG
 MKR 1.95995 GHz
 10.48 dBm



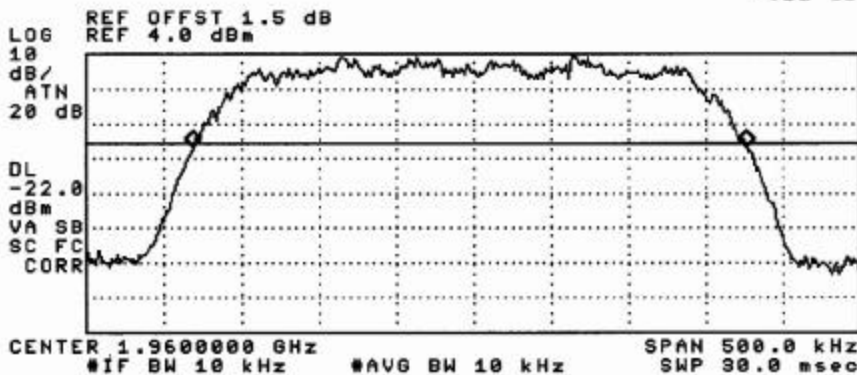
218

15:31:31 MAY 31, 2002
 ↗ LGC 1900M (EDGE INPUT BANDWIDTH) Downlink, Mid Ch.
 ACTV DET: PEAK
 MEAS DET: PEAK QP AVG
 MKR 357.5 kHz
 -.49 dB



219

15:33:00 MAY 31, 2002
 ↗ LGC 1900M (EDGE OUTPUT BANDWIDTH) Downlink, Mid Ch.
 ACTV DET: PEAK
 MEAS DET: PEAK QP AVG
 MKR 357.5 kHz
 -.22 dB



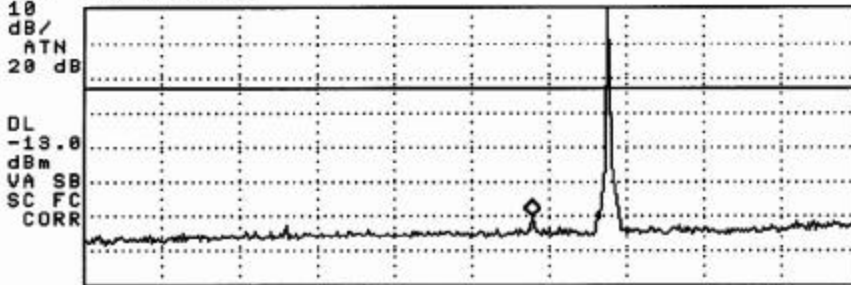
220

15:34:11 MAY 31, 2002

LGC 1900M (EDGE OUT-OF-BAND) Downlink, Mid Ch.

ACTV DET: PEAK
MEAS DET: PEAK QP AVG
MKR 1.681 GHz
-50.32 dBm

LOG REF OFFST 1.5 dB
REF 10.0 dBm



START 15 MHz #IF BW 1.0 MHz #AVG BW 1 MHz STOP 2.900 GHz SWP 57.7 msec

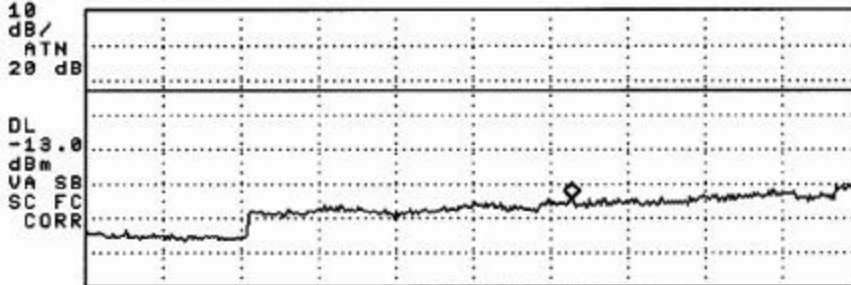
221

15:34:33 MAY 31, 2002

LGC 1900M (EDGE OUT-OF-BAND) Downlink, Mid Ch.

ACTV DET: PEAK
MEAS DET: PEAK QP AVG
MKR 13.63 GHz
-44.87 dBm

LOG REF OFFST 1.5 dB
REF 10.0 dBm



START 2.90 GHz #IF BW 1.0 MHz #AVG BW 1 MHz STOP 20.00 GHz SWP 351 msec

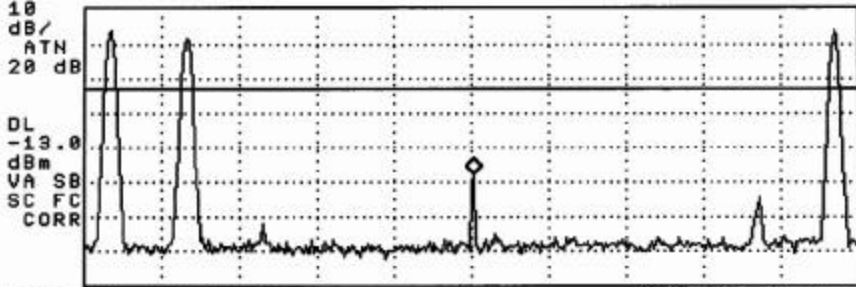
222

15:37:06 MAY 31, 2002

LGC 1900M (EDGE INTERMOD) Downlink, Mid Ch.

ACTV DET: PEAK
MEAS DET: PEAK QP AVG
MKR 1.96005 GHz
-37.79 dBm

REF OFFST 1.5 dB
REF 10.0 dBm



CENTER 1.96000 GHz #IF BW 10 kHz #AVG BW 10 kHz SPAN 20.00 MHz SWP 600 msec

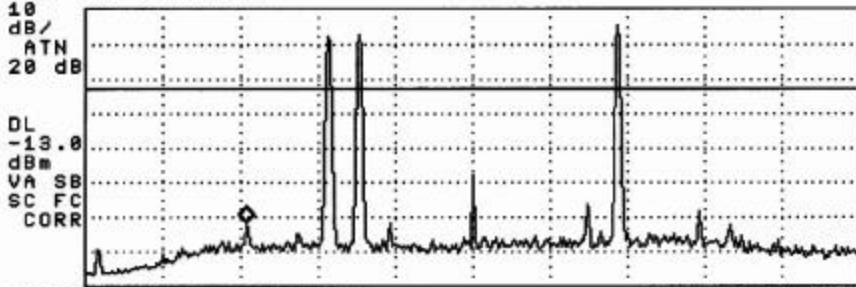
223

15:37:33 MAY 31, 2002

LGC 1900M (EDGE INTERMOD) Downlink, Mid Ch.

ACTV DET: PEAK
MEAS DET: PEAK QP AVG
MKR 1.94538 GHz
-51.85 dBm

REF OFFST 1.5 dB
REF 10.0 dBm



CENTER 1.96000 GHz #IF BW 10 kHz #AVG BW 10 kHz SPAN 50.00 MHz SWP 1.50 sec

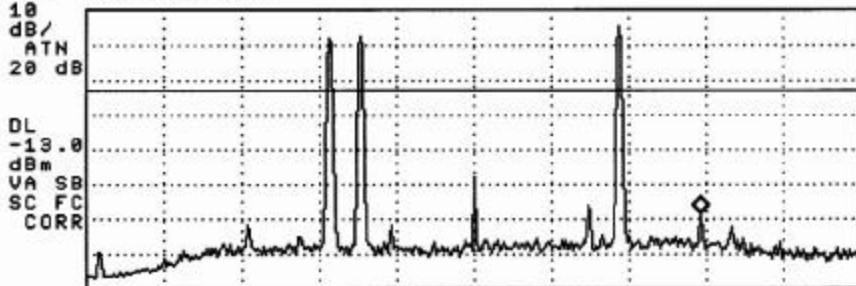
224

15:37:46 MAY 31, 2002

LGC 1900M (EDGE INTERMOD) Downlink, Mid Ch.

ACTV DET: PEAK
MEAS DET: PEAK QP AVG
MKR 1.97463 GHz
-48.51 dBm

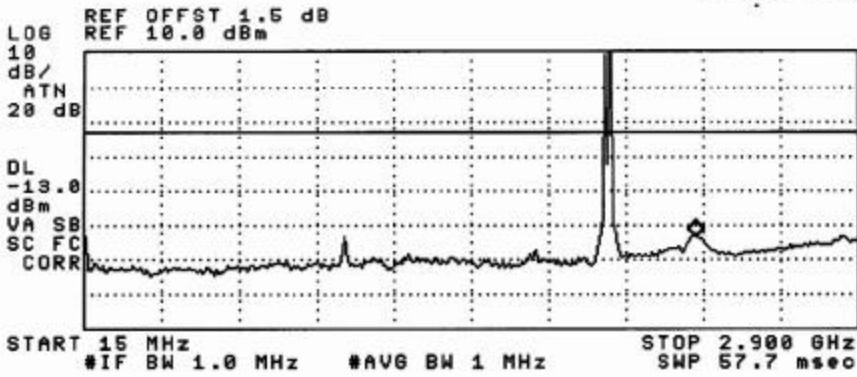
REF OFFST 1.5 dB
REF 10.0 dBm



CENTER 1.96000 GHz #IF BW 10 kHz #AVG BW 10 kHz SPAN 50.00 MHz SWP 1.50 sec

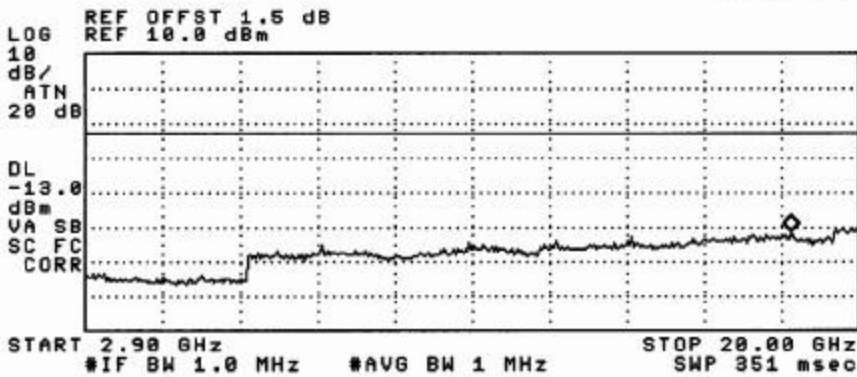
225

15:38:35 MAY 31, 2002
 LGC 1900M (EDGE INTERMOD OUT-OF-BAND) Downlink, Mid Ch
 ACTV DET: PEAK
 MEAS DET: PEAK QP AVG
 MKR 2.294 GHz
 -43.62 dBm



226

15:38:59 MAY 31, 2002
 LGC 1900M (EDGE INTERMOD OUT-OF-BAND) Downlink, Mid Ch
 ACTV DET: PEAK
 MEAS DET: PEAK QP AVG
 MKR 18.50 GHz
 -41.52 dBm

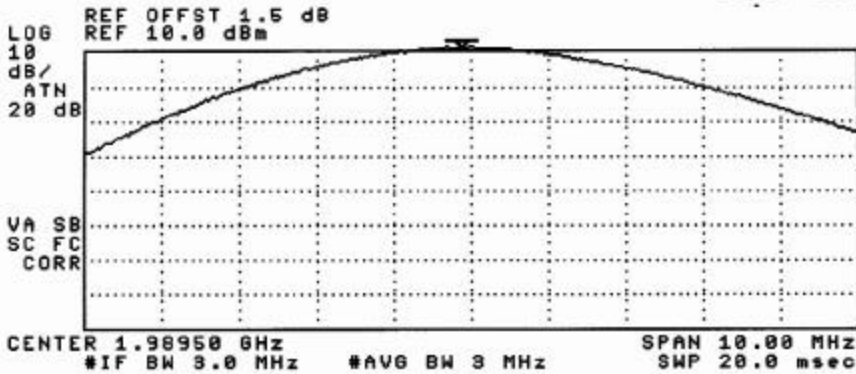


227

15:18:24 MAY 31, 2002

L6C 1900M (EDGE OUTPUT POWER) Downlink, Hi Ch.

ACTV DET: PEAK
MEAS DET: PEAK QP AVG
MKR 1.98938 GHz
10.87 dBm

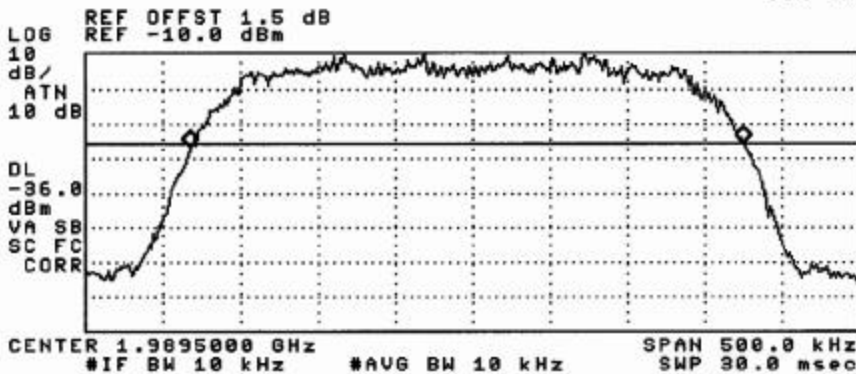


228

15:20:11 MAY 31, 2002

L6C 1900M (EDGE INPUT BANDWIDTH) Downlink, Hi Ch.

ACTV DET: PEAK
MEAS DET: PEAK QP AVG
MKR 357.5 kHz
.64 dB

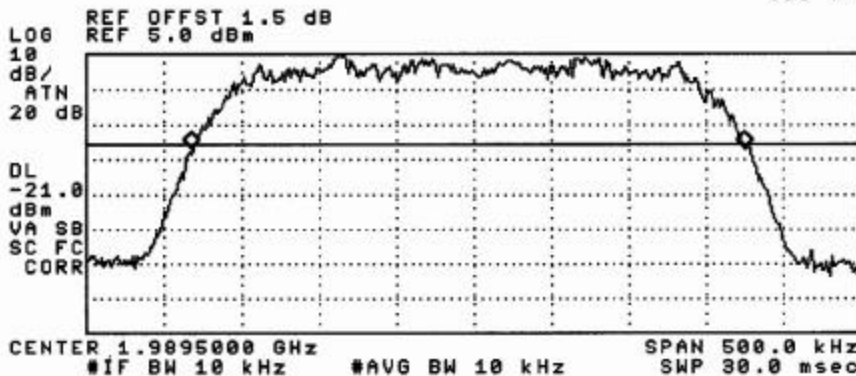


229

15:21:44 MAY 31, 2002

L6C 1900M (EDGE OUTPUT BANDWIDTH) Downlink, Hi Ch.

ACTV DET: PEAK
MEAS DET: PEAK QP AVG
MKR 357.5 kHz
.85 dB

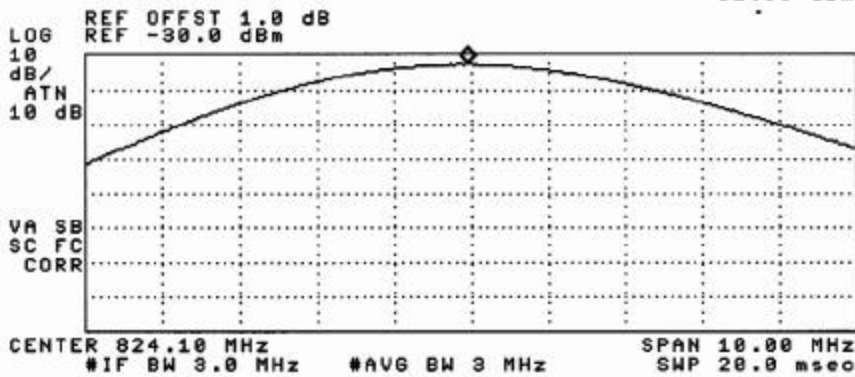


230

09:49:32 MAY 23, 2002

LGC 800MHz (AMPS OUTPUT POWER) Uplink, Low Ch.

ACTV DET: PEAK
MEAS DET: PEAK QP AVG
MKR 824.05 MHz
-32.86 dBm

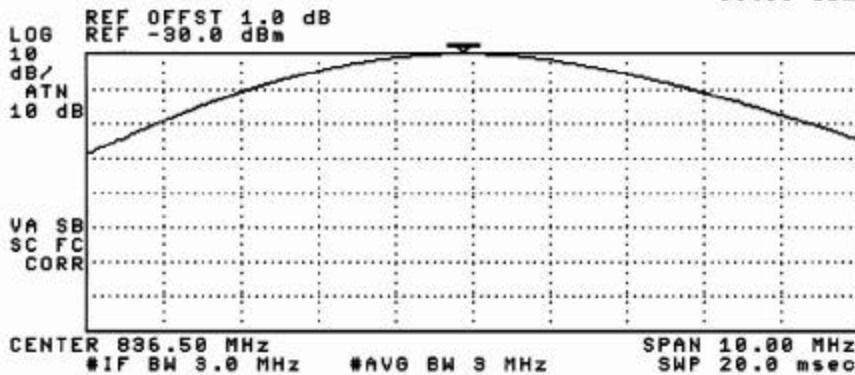


23

09:49:59 MAY 23, 2002

LGC 800MHz (AMPS OUTPUT POWER) Uplink, Mid Ch.

ACTV DET: PEAK
MEAS DET: PEAK QP AVG
MKR 836.38 MHz
-30.06 dBm

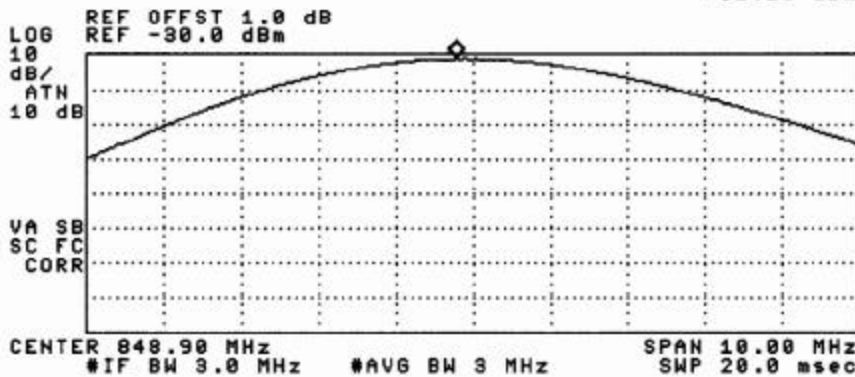


24

09:50:29 MAY 23, 2002

LGC 800MHz (AMPS OUTPUT POWER) Uplink, Hi Ch.

ACTV DET: PEAK
MEAS DET: PEAK QP AVG
MKR 848.68 MHz
-31.26 dBm

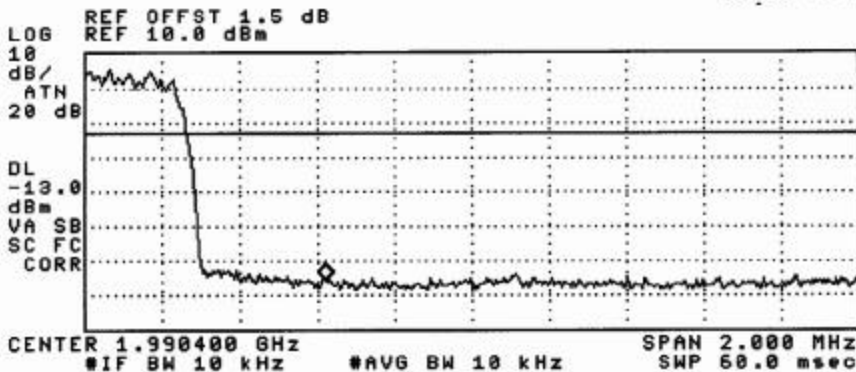


25

15:23:23 MAY 31, 2002

L6C 1900M (EDGE TOP BLOCK EDGE) Downlink, Hi Ch.

ACTV DET: PEAK
MEAS DET: PEAK QP AVG
MKR 1.990020 GHz
-55.90 dBm

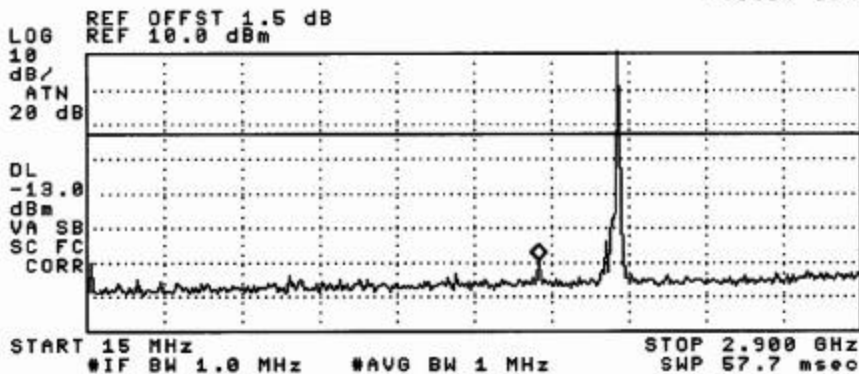


231

15:24:50 MAY 31, 2002

L6C 1900M (EDGE OUT-OF-BAND) Downlink, Hi Ch.

ACTV DET: PEAK
MEAS DET: PEAK QP AVG
MKR 1.696 GHz
-49.54 dBm

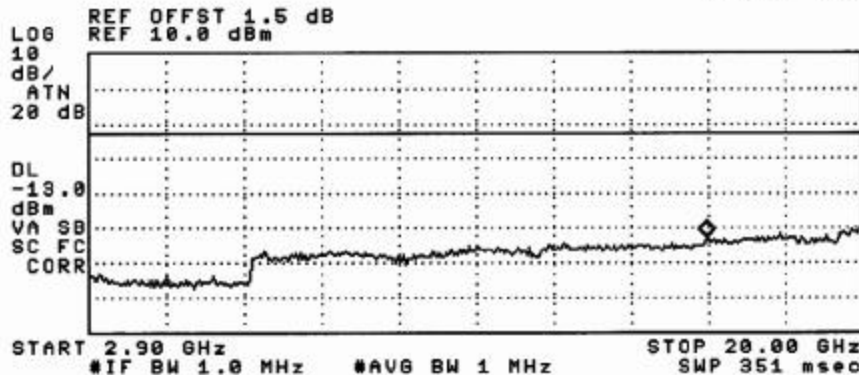


232

15:25:14 MAY 31, 2002

L6C 1900M (EDGE OUT-OF-BAND) Downlink, Hi Ch.

ACTV DET: PEAK
MEAS DET: PEAK QP AVG
MKR 16.54 GHz
-42.92 dBm



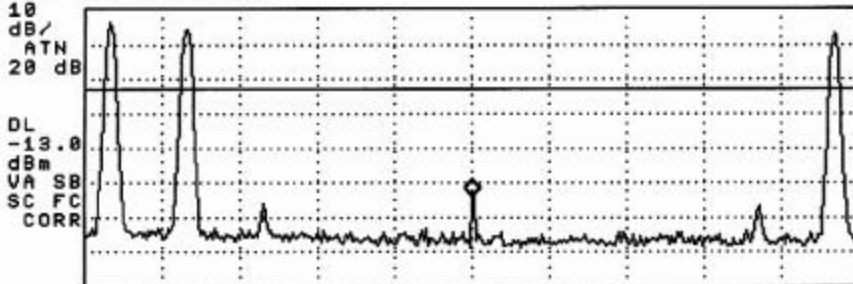
233

15:13:43 MAY 31, 2002

LGC 1900M (EDGE INTERMOD) Downlink, Hi Ch.

ACTV DET: PEAK
MEAS DET: PEAK QP AVG
MKR 1.98000 GHz
-43.99 dBm

LOG REF OFFST 1.5 dB
REF 10.0 dBm



START 1.97000 GHz STOP 1.99000 GHz
#IF BW 10 kHz #AVG BW 10 kHz SWP 600 msec

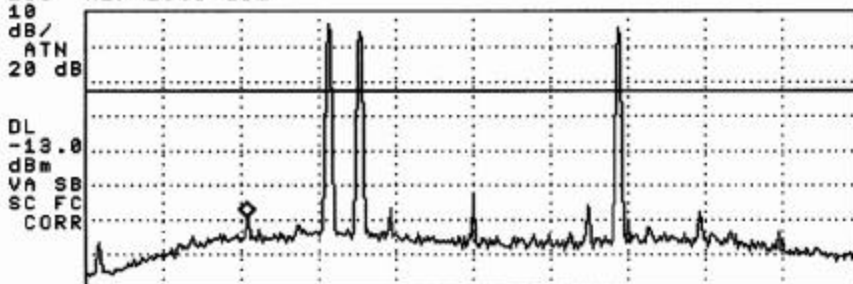
234

15:14:09 MAY 31, 2002

LGC 1900M (EDGE INTERMOD) Downlink, Hi Ch.

ACTV DET: PEAK
MEAS DET: PEAK QP AVG
MKR 1.96538 GHz
-49.67 dBm

LOG REF OFFST 1.5 dB
REF 10.0 dBm



CENTER 1.96000 GHz SPAN 50.00 MHz
#IF BW 10 kHz #AVG BW 10 kHz SWP 1.50 sec

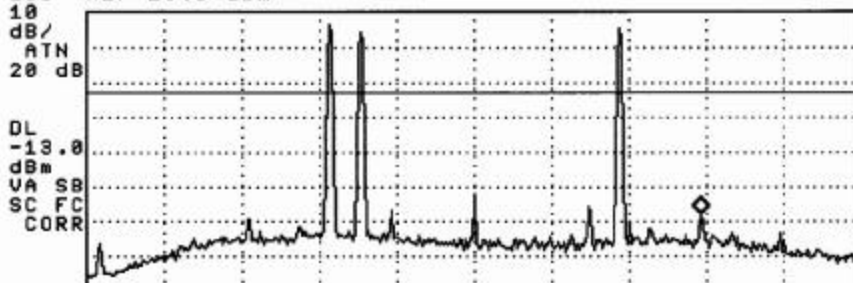
235

15:14:23 MAY 31, 2002

LGC 1900M (EDGE INTERMOD) Downlink, Hi Ch.

ACTV DET: PEAK
MEAS DET: PEAK QP AVG
MKR 1.99463 GHz
-48.03 dBm

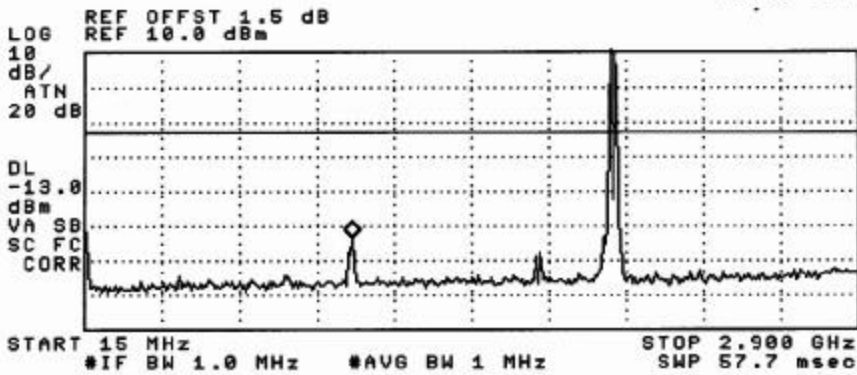
LOG REF OFFST 1.5 dB
REF 10.0 dBm



CENTER 1.98000 GHz SPAN 50.00 MHz
#IF BW 10 kHz #AVG BW 10 kHz SWP 1.50 sec

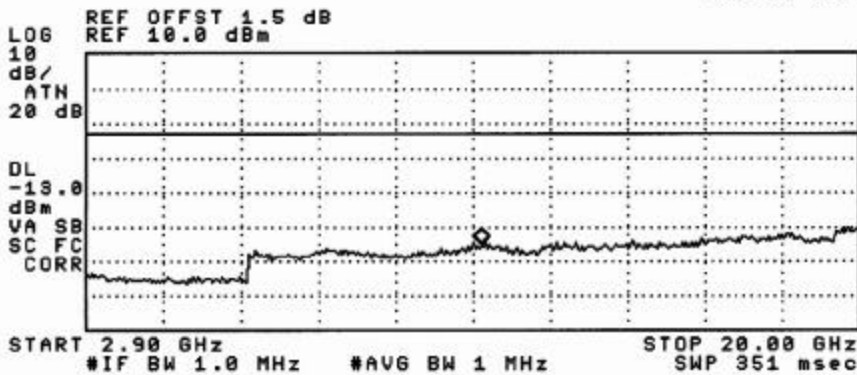
236

15:15:38 MAY 31, 2002
 LGC 1900M (EDGE INTERMOD OUT-OF-BAND) Downlink, Hi Ch
 ACTV DET: PEAK
 MEAS DET: PEAK QP AVG
 MKR 1.010 GHz
 -43.66 dBm



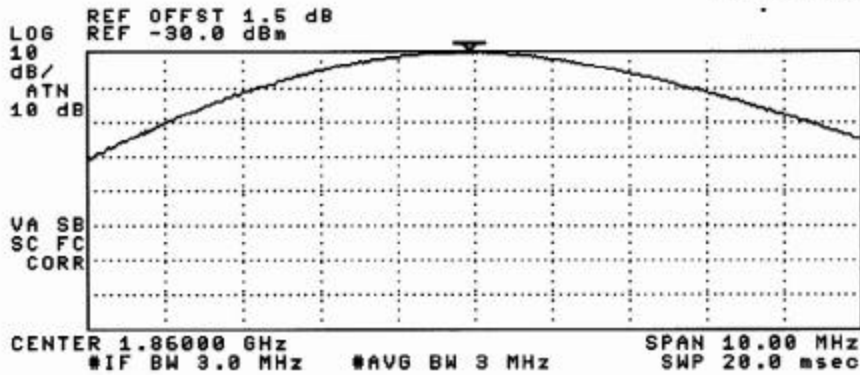
237

15:16:06 MAY 31, 2002
 LGC 1900M (EDGE INTERMOD OUT-OF-BAND) Downlink, Hi Ch
 ACTV DET: PEAK
 MEAS DET: PEAK QP AVG
 MKR 11.62 GHz
 -45.11 dBm



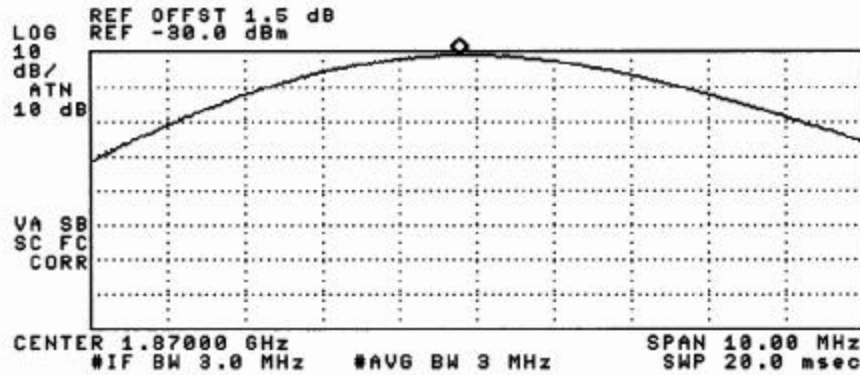
238

10:14:40 MAY 31, 2002
 LGC 1900M (EDGE OUTPUT POWER, A-D) Uplink, Mid Ch.
 ACTV DET: PEAK
 MEAS DET: PEAK QP AVG
 MKR 1.85993 GHz
 -30.01 dBm



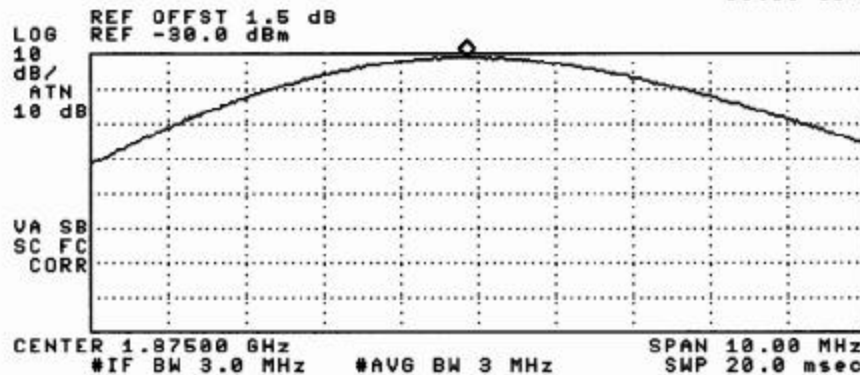
239

10:16:53 MAY 31, 2002
 LGC 1900M (EDGE OUTPUT POWER, D-B) Uplink, Mid Ch.
 ACTV DET: PEAK
 MEAS DET: PEAK QP AVG
 MKR 1.86978 GHz
 -30.93 dBm



240

10:17:12 MAY 31, 2002
 LGC 1900M (EDGE OUTPUT POWER, D-B) Uplink, Mid Ch.
 ACTV DET: PEAK
 MEAS DET: PEAK QP AVG
 MKR 1.87485 GHz
 -30.85 dBm

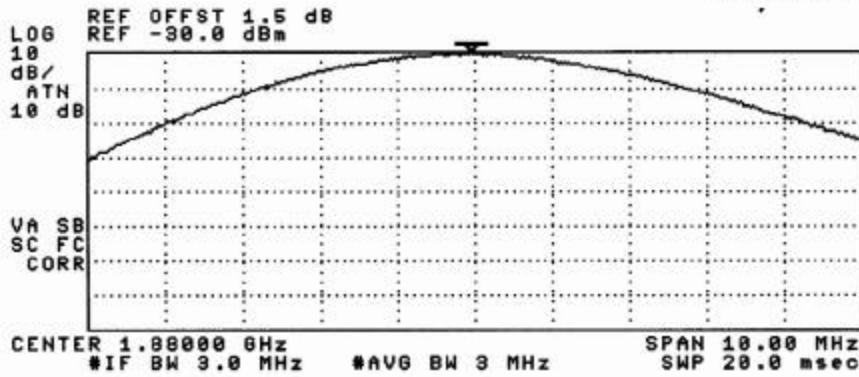


241

10:18:58 MAY 31, 2002

LGC 1900M (EDGE OUTPUT POWER, B-E) Uplink, Mid Ch.

ACTV DET: PEAK
MEAS DET: PEAK QP AVG
MKR 1.87995 GHz
-30.20 dBm

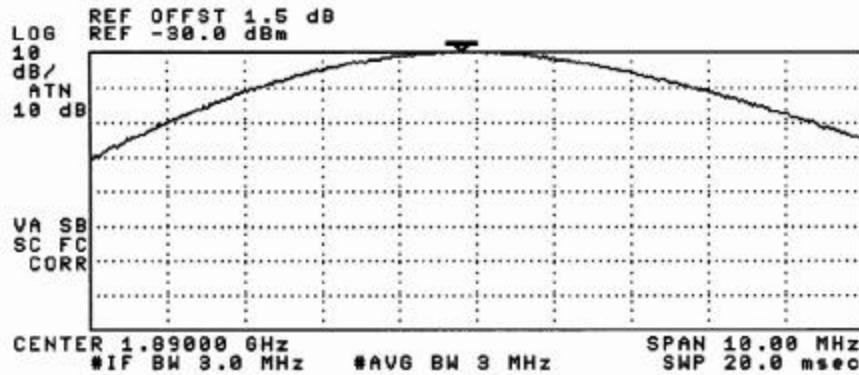


242

10:20:29 MAY 31, 2002

LGC 1900M (EDGE OUTPUT POWER, E-F) Uplink, Mid Ch.

ACTV DET: PEAK
MEAS DET: PEAK QP AVG
MKR 1.88980 GHz
-29.67 dBm

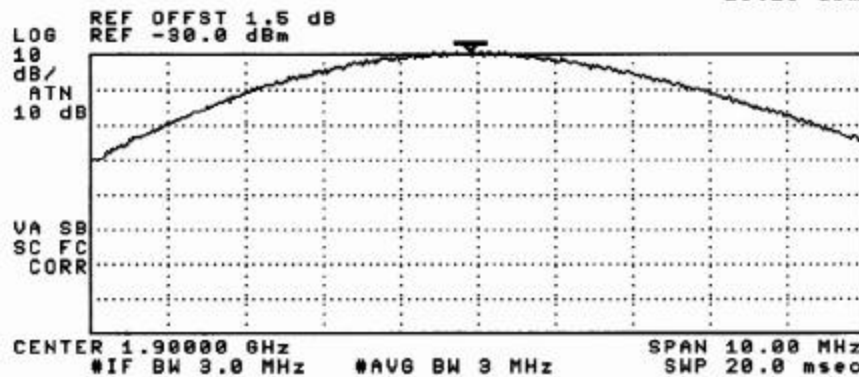


243

10:22:50 MAY 31, 2002

LGC 1900M (EDGE OUTPUT POWER, F-C) Uplink, Mid Ch.

ACTV DET: PEAK
MEAS DET: PEAK QP AVG
MKR 1.89990 GHz
-29.28 dBm

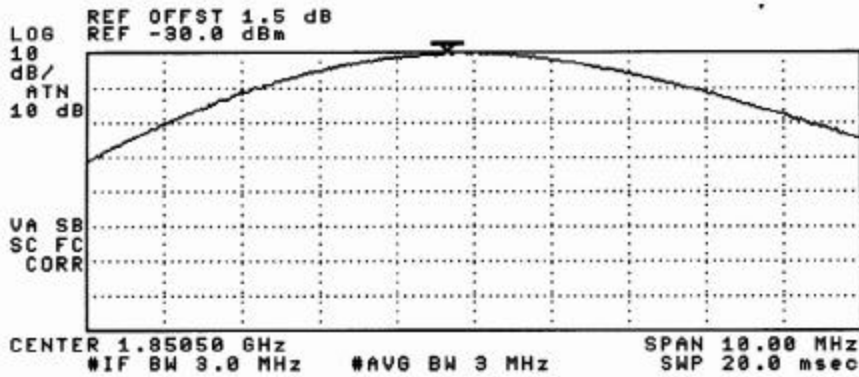


244

14:16:54 MAY 31, 2002

LGC 1900MHz (EDGE OUTPUT POWER) Uplink, Lo Ch.

ACTV DET: PEAK
MEAS DET: PEAK QP AVG
MKR 1.85015 GHz
-30.04 dBm

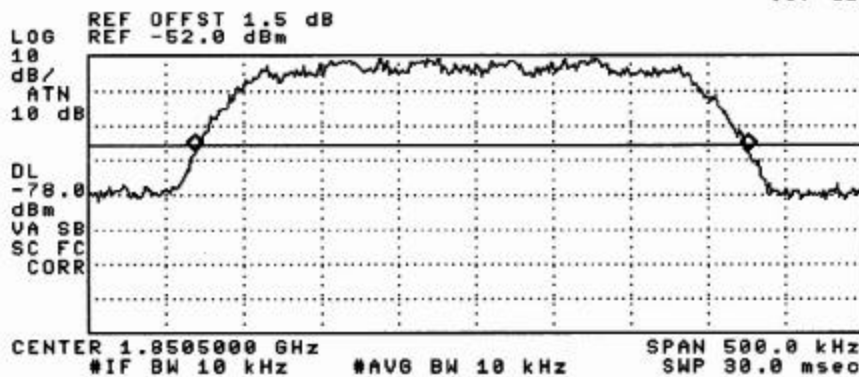


245

14:18:49 MAY 31, 2002

LGC 1900M (EDGE INPUT BANDWIDTH) Uplink, Lo Ch.

ACTV DET: PEAK
MEAS DET: PEAK QP AVG
MKR 357.5 kHz
.07 dB

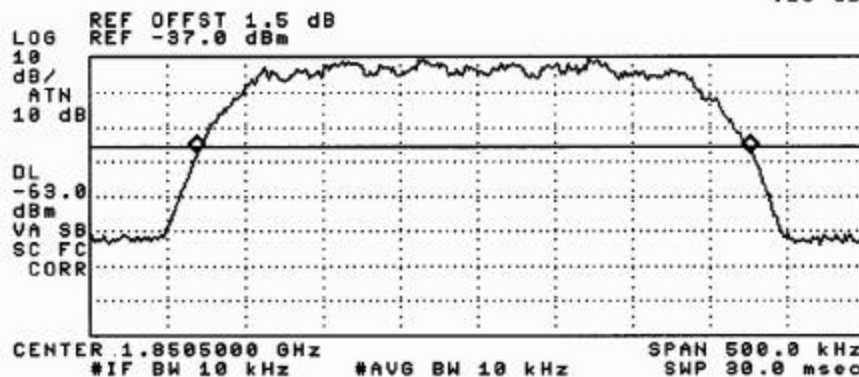


246

14:20:05 MAY 31, 2002

LGC 1900M (EDGE OUTPUT BANDWIDTH) Uplink, Lo Ch.

ACTV DET: PEAK
MEAS DET: PEAK QP AVG
MKR 357.5 kHz
.23 dB



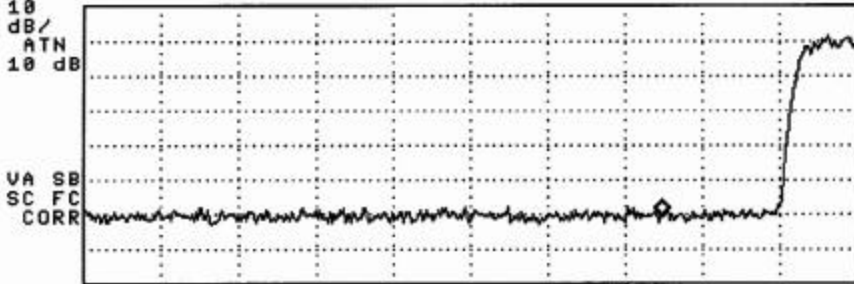
247

14:23:09 MAY 31, 2002

L6C 1900M (EDGE BOTTOM BLOCK EDGE) Uplink, Lo Ch.

ACTV DET: PEAK
MEAS DET: PEAK QP AVG
MKR 1.849995 GHz
-90.74 dBm

LOG REF OFFST 1.5 dB
10 REF -30.0 dBm
dB/
ATN
10 dB



CENTER 1.849500 GHz SPAN 2.000 MHz
#IF BW 10 kHz #AVG BW 10 kHz SWP 60.0 msec

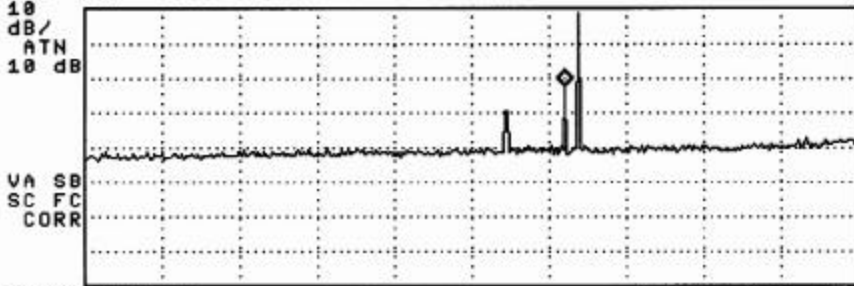
248

14:23:59 MAY 31, 2002

L6C 1900M (EDGE OUT-OF-BAND) Uplink, Lo Ch.

ACTV DET: PEAK
MEAS DET: PEAK QP AVG
MKR 1.804 GHz
-52.51 dBm

LOG REF OFFST 1.5 dB
10 REF -30.0 dBm
dB/
ATN
10 dB



START 15 MHz STOP 2.900 GHz
#IF BW 1.0 MHz #AVG BW 1 MHz SWP 57.7 msec

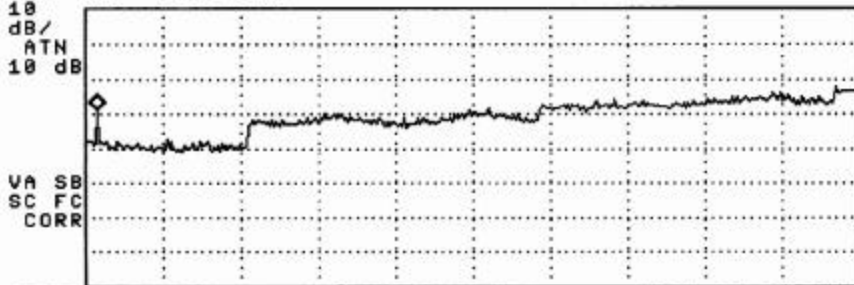
249

14:24:38 MAY 31, 2002

L6C 1900M (EDGE OUT-OF-BAND) Uplink, Lo Ch.

ACTV DET: PEAK
MEAS DET: PEAK QP AVG
MKR 3.15 GHz
-59.24 dBm

LOG REF OFFST 1.5 dB
10 REF -30.0 dBm
dB/
ATN
10 dB



START 2.90 GHz STOP 20.00 GHz
#IF BW 1.0 MHz #AVG BW 1 MHz SWP 351 msec

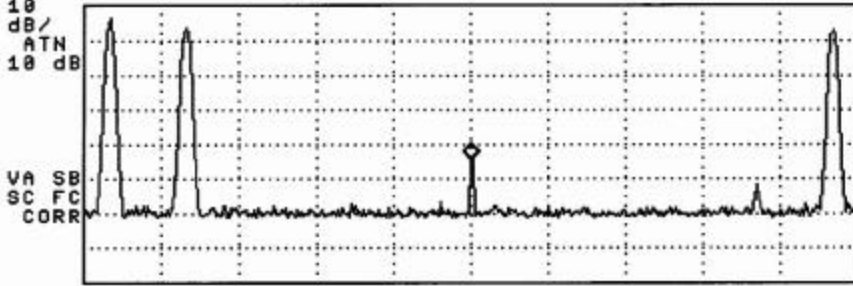
250

14:29:56 MAY 31, 2002

L6C 1900M (EDGE INTERMOD) Uplink, Lo Ch.

ACTU DET: PEAK
MEAS DET: PEAK QP AVG
MKR 1.86000 GHz
-74.64 dBm

LOG REF OFFST 1.5 dB
REF -30.0 dBm



#IF BW 10 kHz #AVG BW 10 kHz SWP 600 msec

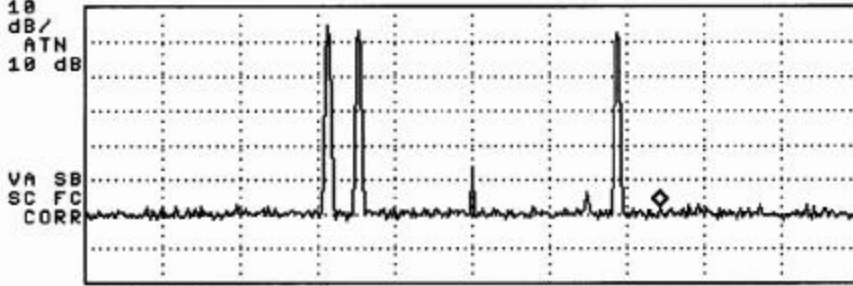
251

14:30:30 MAY 31, 2002

L6C 1900M (EDGE INTERMOD) Uplink, Lo Ch.

ACTU DET: PEAK
MEAS DET: PEAK QP AVG
MKR 1.87213 GHz
-87.98 dBm

LOG REF OFFST 1.5 dB
REF -30.0 dBm

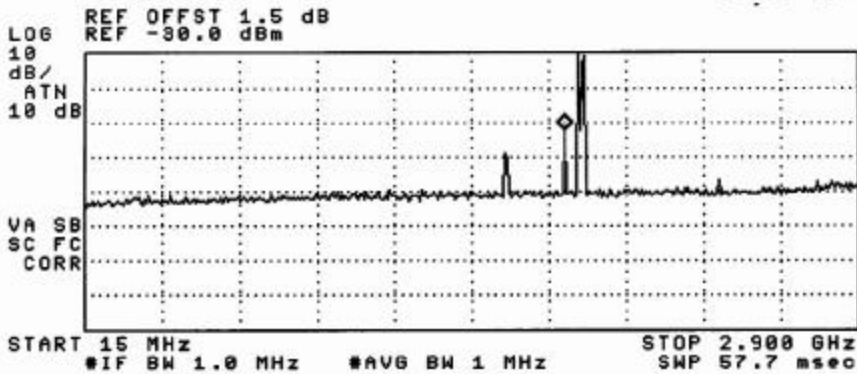


#IF BW 10 kHz #AVG BW 10 kHz SWP 1.50 sec

252

14:31:14 MAY 31, 2002
LGC 1900M (EDGE INTERMOD OUT-OF-BAND) Uplink, Lo Ch.

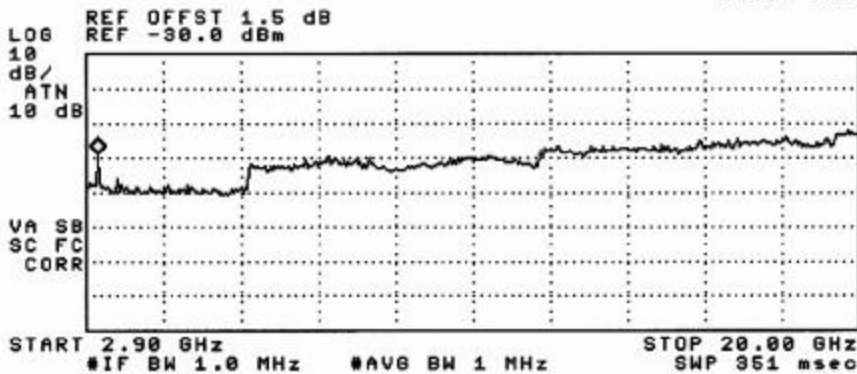
ACTV DET: PEAK
MEAS DET: PEAK QP AVG
MKR 1.804 GHz
-52.58 dBm



253

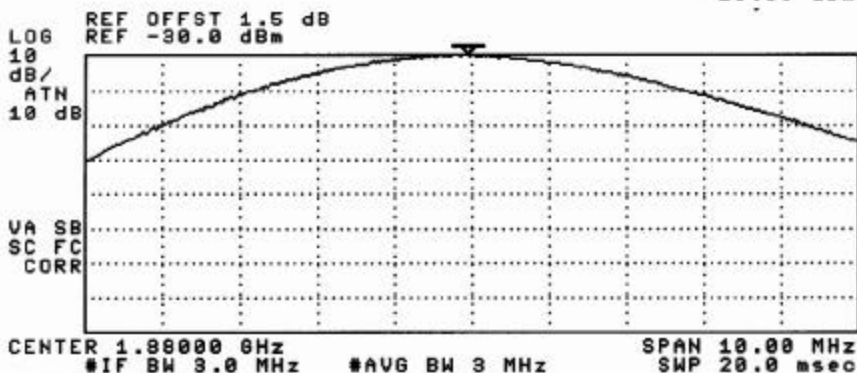
14:31:41 MAY 31, 2002
LGC 1900M (EDGE INTERMOD OUT-OF-BAND) Uplink, Lo Ch.

ACTV DET: PEAK
MEAS DET: PEAK QP AVG
MKR 3.16 GHz
-59.03 dBm



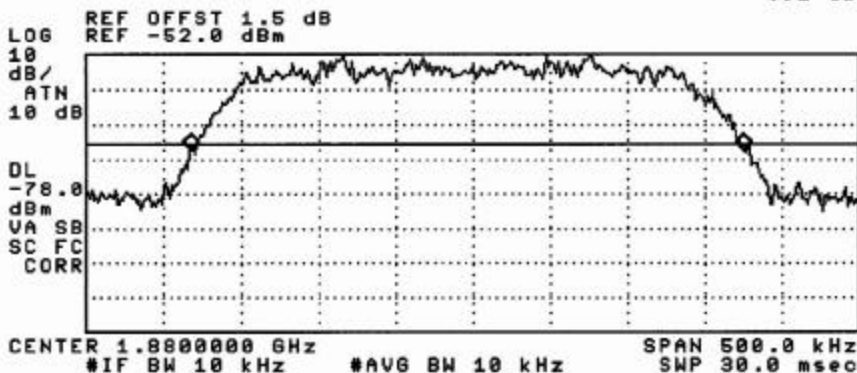
254

14:47:30 MAY 31, 2002
 LGC 1900M (EDGE OUTPUT POWER) Uplink, Mid Ch.
 ACTV DET: PEAK
 MEAS DET: PEAK QP AVG
 MKR 1.87995 GHz
 -29.95 dBm



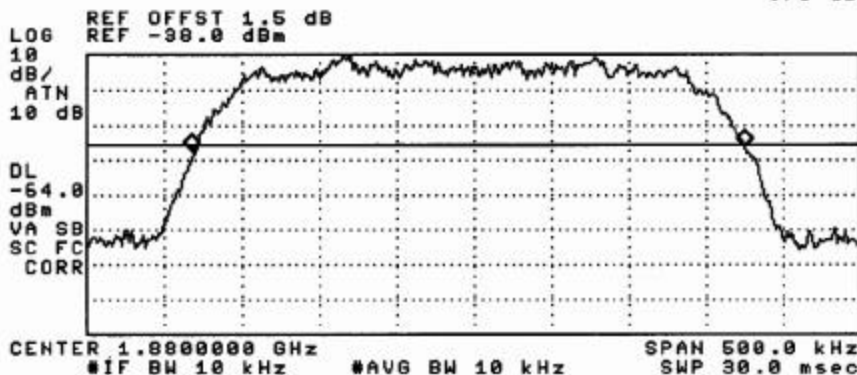
255

14:49:14 MAY 31, 2002
 LGC 1900M (EDGE INPUT BANDWIDTH) Uplink, Mid Ch.
 ACTV DET: PEAK
 MEAS DET: PEAK QP AVG
 MKR 357.5 kHz
 -.52 dB



256

14:51:03 MAY 31, 2002
 LGC 1900M (EDGE OUTPUT BANDWIDTH) Uplink, Mid Ch.
 ACTV DET: PEAK
 MEAS DET: PEAK QP AVG
 MKR 357.5 kHz
 .70 dB



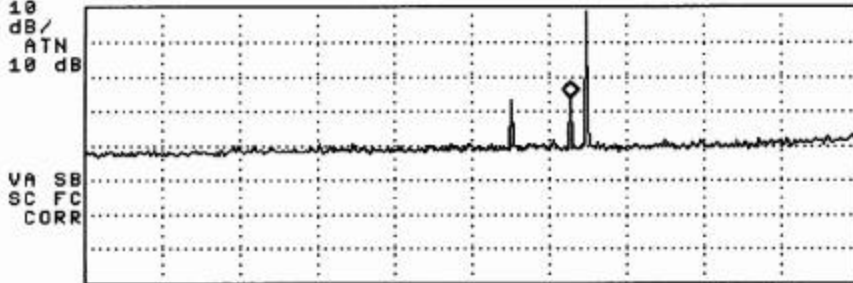
257

14:52:09 MAY 31, 2002

LGC 1900M (EDGE OUT-OF-BAND) Uplink, Mid Ch.

ACTV DET: PEAK
MEAS DET: PEAK QP AVG
MKR 1.825 GHz
-56.20 dBm

REF OFFST 1.5 dB
REF -30.0 dBm



START 15 MHz #IF BW 1.0 MHz #AVG BW 1 MHz STOP 2.900 GHz SWP 57.7 msec

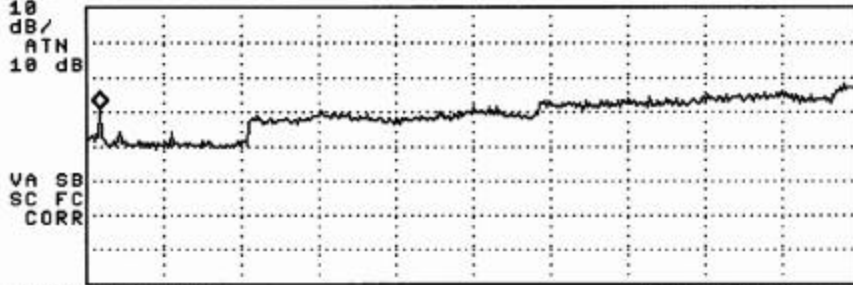
258

14:52:46 MAY 31, 2002

LGC 1900M (EDGE OUT-OF-BAND) Uplink, Mid Ch.

ACTV DET: PEAK
MEAS DET: PEAK QP AVG
MKR 3.20 GHz
-59.10 dBm

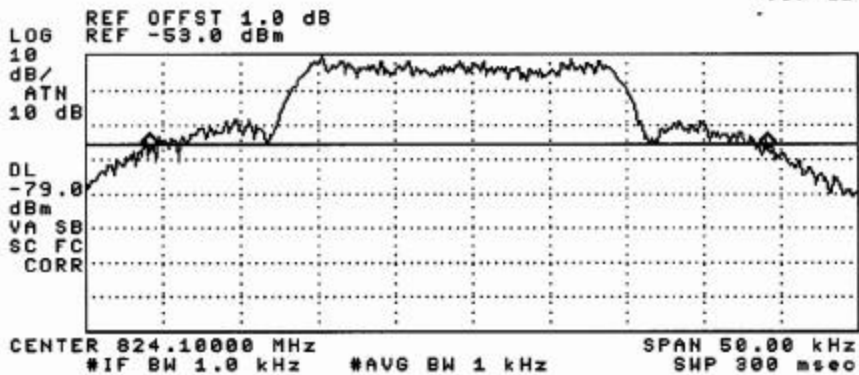
REF OFFST 1.5 dB
REF -30.0 dBm



START 2.90 GHz #IF BW 1.0 MHz #AVG BW 1 MHz STOP 20.00 GHz SWP 351 msec

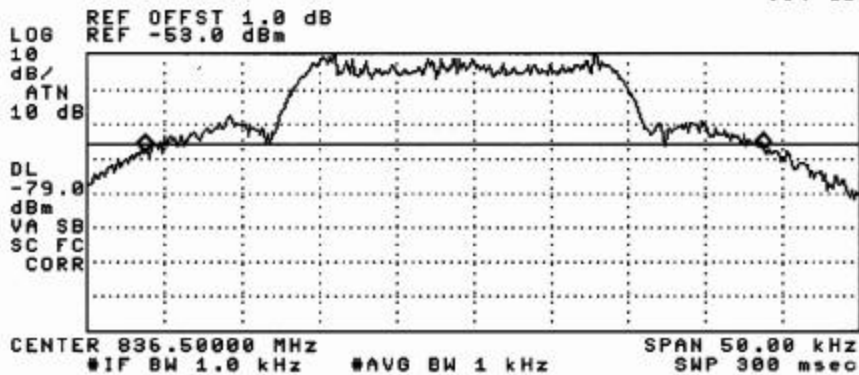
259

09:57:18 MAY 23, 2002
 LGC 800MHz (AMPS INPUT BANDWIDTH) Uplink, Low Ch.
 ACTV DET: PEAK
 MEAS DET: PEAK QP AVG
 MKRΔ 40.00 kHz
 -.07 dB



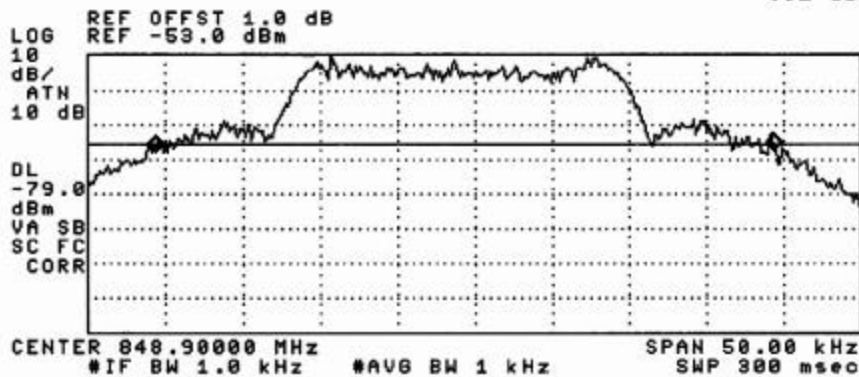
26

09:58:38 MAY 23, 2002
 LGC 800MHz (AMPS INPUT BANDWIDTH) Uplink, Mid Ch.
 ACTV DET: PEAK
 MEAS DET: PEAK QP AVG
 MKRΔ 40.00 kHz
 .84 dB



27

09:59:23 MAY 23, 2002
 LGC 800MHz (AMPS INPUT BANDWIDTH) Uplink, Hi Ch.
 ACTV DET: PEAK
 MEAS DET: PEAK QP AVG
 MKRΔ 40.00 kHz
 .92 dB

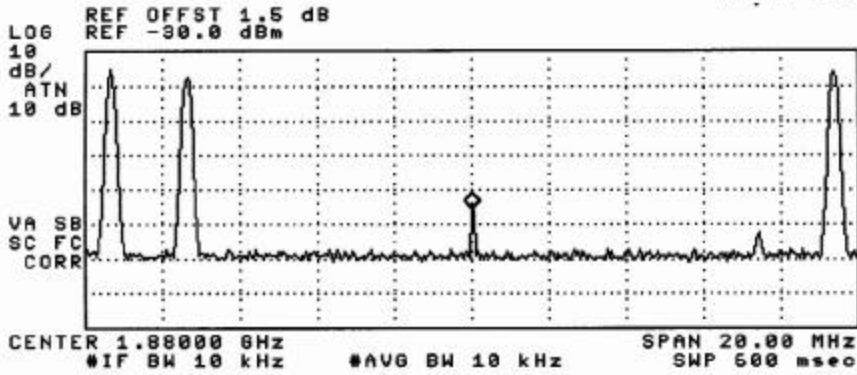


28

14:36:26 MAY 31, 2002

LGC 1900M (EDGE INTERMOD) Uplink, Mid Ch.

ACTV DET: PEAK
MEAS DET: PEAK QP AVG
MKR 1.88000 GHz
-75.92 dBm

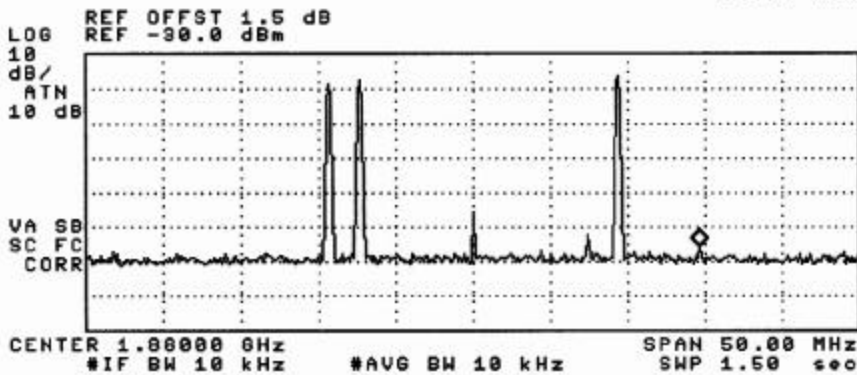


260

14:36:54 MAY 31, 2002

LGC 1900M (EDGE INTERMOD) Uplink, Mid Ch.

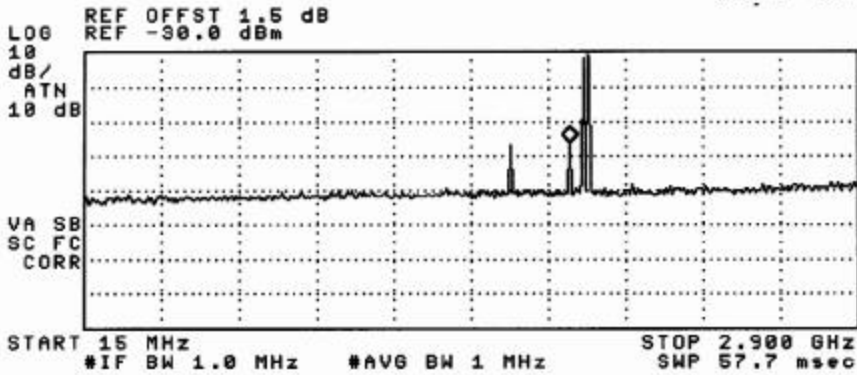
ACTV DET: PEAK
MEAS DET: PEAK QP AVG
MKR 1.89463 GHz
-85.71 dBm



261

14:42:18 MAY 31, 2002
LGC 1900M (EDGE INTERMOD OUT-OF-BAND) Uplink, Mid Ch.

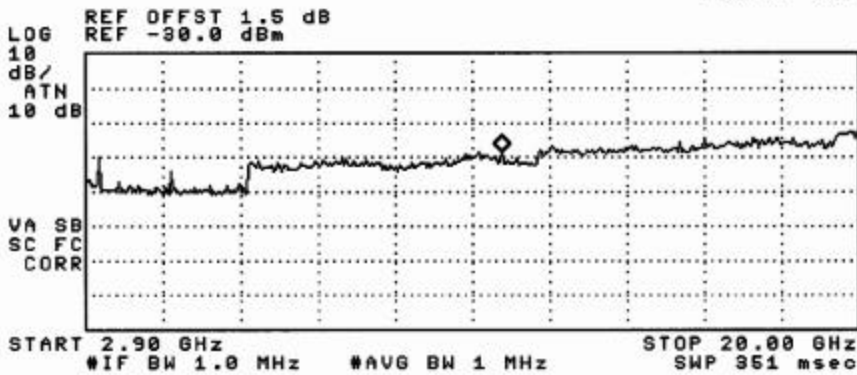
ACTV DET: PEAK
MEAS DET: PEAK QP AVG
MKR 1.825 GHz
-56.41 dBm



262

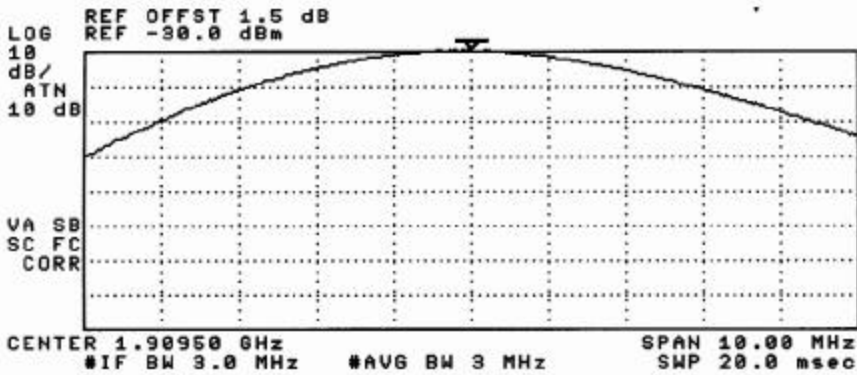
14:42:39 MAY 31, 2002
LGC 1900M (EDGE INTERMOD OUT-OF-BAND) Uplink, Mid Ch.

ACTV DET: PEAK
MEAS DET: PEAK QP AVG
MKR 12.09 GHz
-58.44 dBm



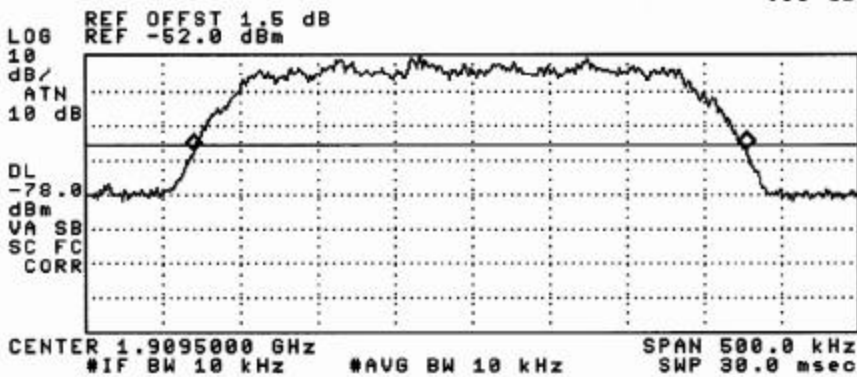
263

14:55:59 MAY 31, 2002
 ↗ LGC 1900M (EDGE OUTPUT POWER) Uplink, Hi Ch.
 ACTV DET: PEAK
 MEAS DET: PEAK QP AVG
 MKR 1.90950 GHz
 -29.49 dBm



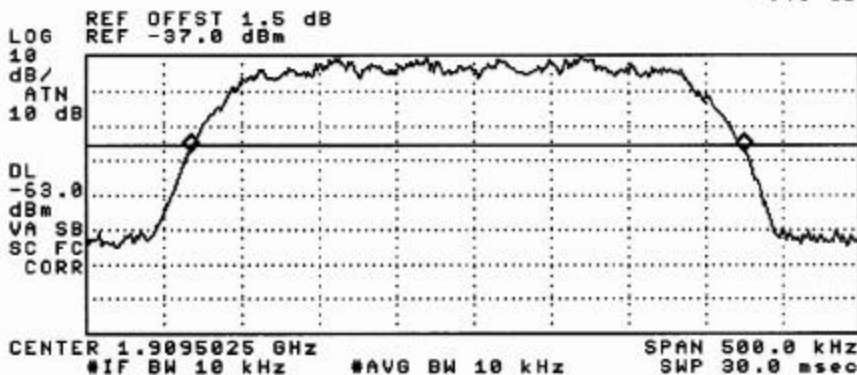
264

14:57:55 MAY 31, 2002
 ↗ LGC 1900M (EDGE INPUT BANDWIDTH) Uplink, Hi Ch.
 ACTV DET: PEAK
 MEAS DET: PEAK QP AVG
 MKR_A 357.5 kHz
 .39 dB



265

15:00:08 MAY 31, 2002
 ↗ LGC 1900M (EDGE OUTPUT BANDWIDTH) Uplink, Hi Ch.
 ACTV DET: PEAK
 MEAS DET: PEAK QP AVG
 MKR_A 357.5 kHz
 -.43 dB

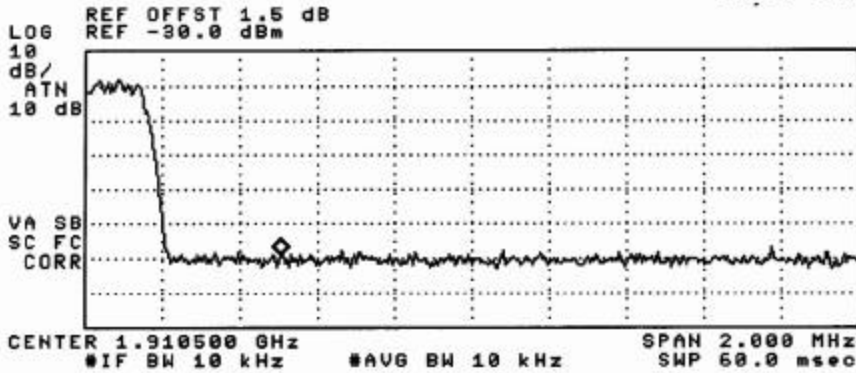


266

15:02:18 MAY 31, 2002

LGC 1900M (EDGE TOP BLOCK EDGE) Uplink, Hi Ch.

ACTV DET: PEAK
MEAS DET: PEAK QP AVG
MKR 1.910005 GHz
-88.99 dBm

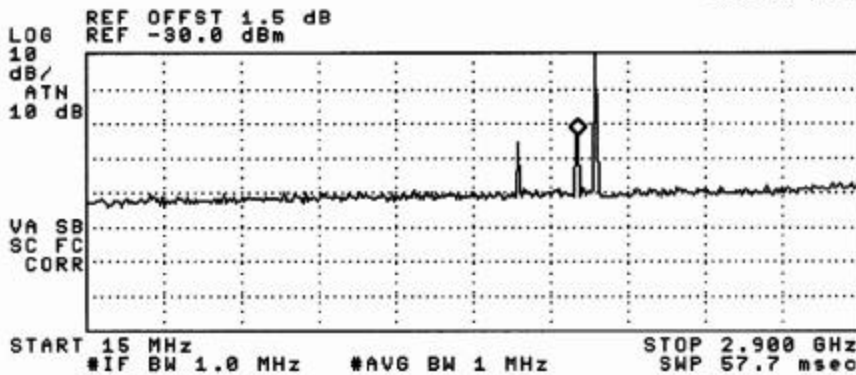


267

15:02:56 MAY 31, 2002

LGC 1900M (EDGE OUT-OF-BAND) Uplink, Hi Ch.

ACTV DET: PEAK
MEAS DET: PEAK QP AVG
MKR 1.847 GHz
-53.73 dBm

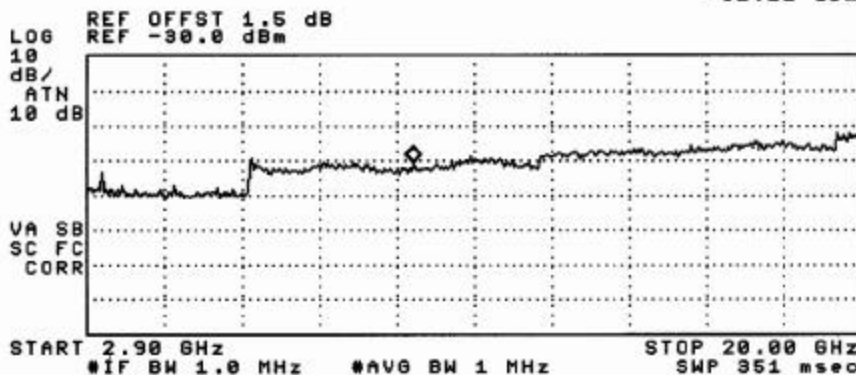


268

15:03:26 MAY 31, 2002

LGC 1900M (EDGE OUT-OF-BAND) Uplink, Hi Ch.

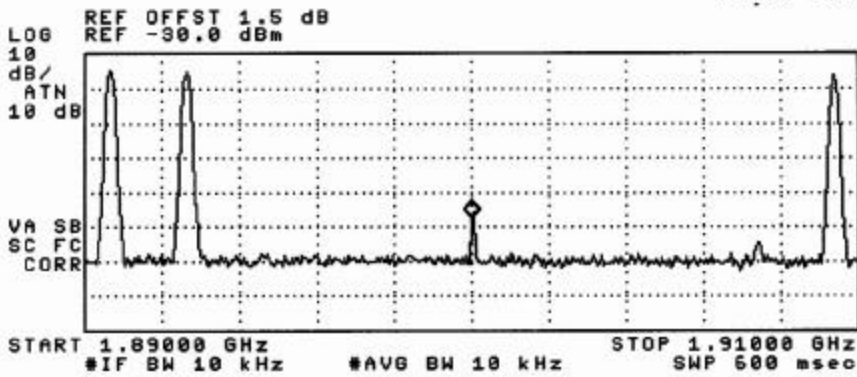
ACTV DET: PEAK
MEAS DET: PEAK QP AVG
MKR 10.08 GHz
-61.11 dBm



269

15:06:33 MAY 31, 2002
LGC 1900M (EDGE INTERMOD) Uplink, Hi Ch.

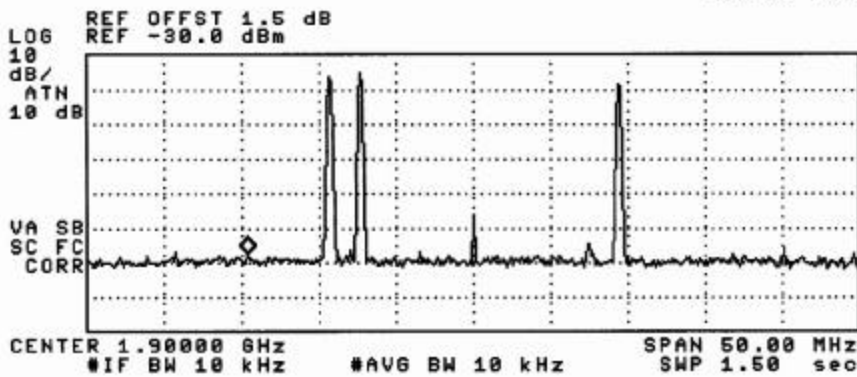
ACTV DET: PEAK
MEAS DET: PEAK QP AVG
MKR 1.90000 GHz
-77.19 dBm



270

15:07:05 MAY 31, 2002
LGC 1900M (EDGE INTERMOD) Uplink, Hi Ch.

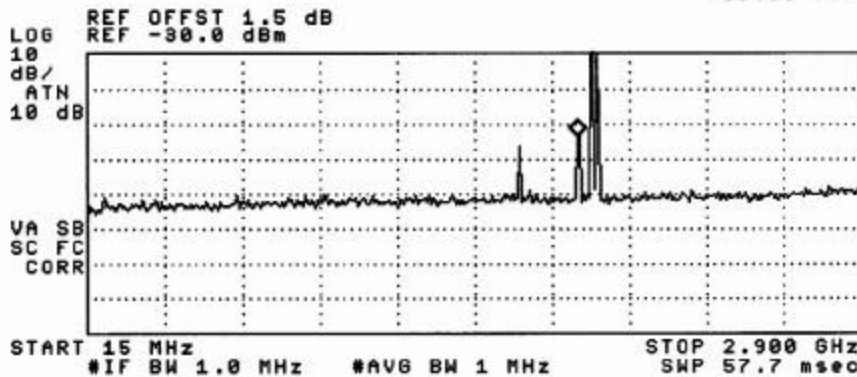
ACTV DET: PEAK
MEAS DET: PEAK QP AVG
MKR 1.90530 GHz
-87.35 dBm



271

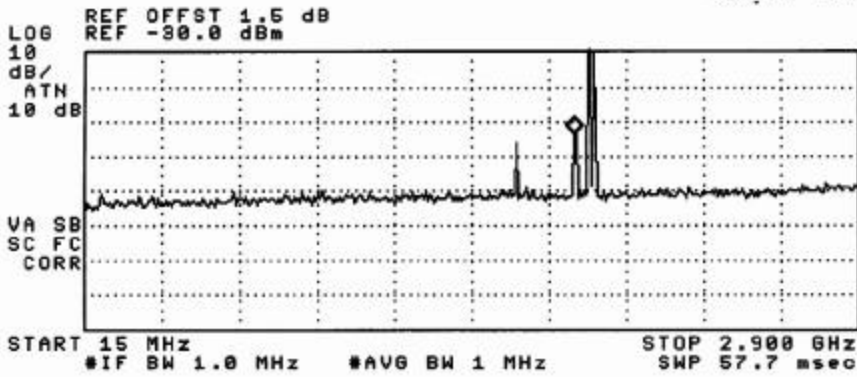
15:07:52 MAY 31, 2002
LGC 1900M (EDGE INTERMOD OUT-OF-BAND) Uplink, Hi Ch.

ACTV DET: PEAK
MEAS DET: PEAK QP AVG
MKR 1.840 GHz
-53.86 dBm



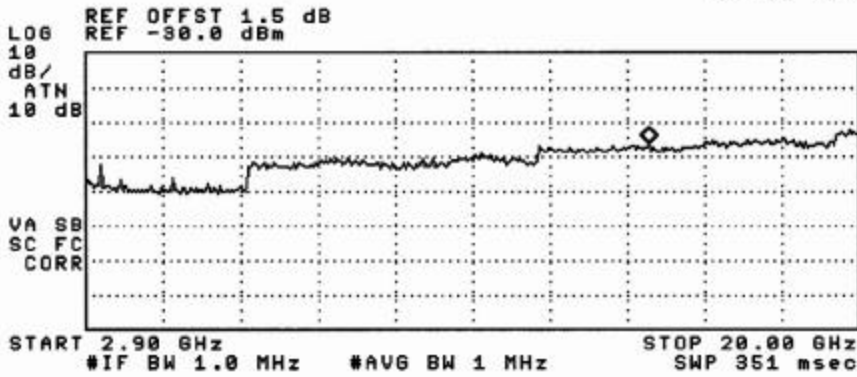
272

15:00:54 MAY 31, 2002
LGC 1900M (EDGE INTERMOD OUT-OF-BAND) Uplink, Hi Ch.
ACTV DET: PEAK
MEAS DET: PEAK QP AVG
MKR 1.840 GHz
-53.86 dBm



273

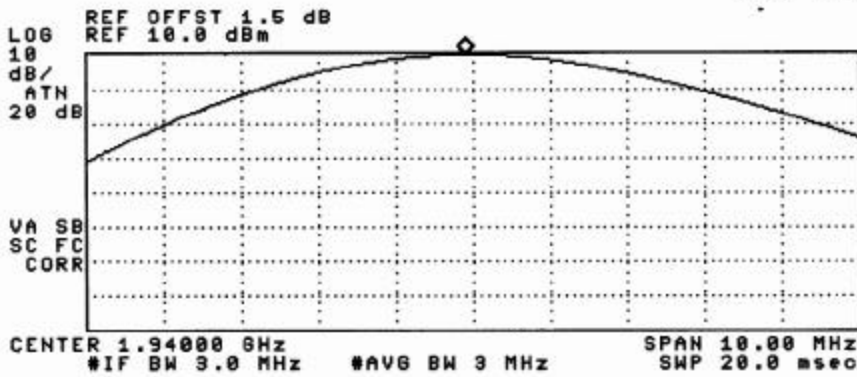
15:00:55 MAY 31, 2002
LGC 1900M (EDGE INTERMOD OUT-OF-BAND) Uplink, Hi Ch.
ACTV DET: PEAK
MEAS DET: PEAK QP AVG
MKR 15.34 GHz
-56.35 dBm



274

10:41:45 MAY 31, 2002
LGC 1900M (GSM OUTPUT POWER, A-D) Downlink, Mid Ch.

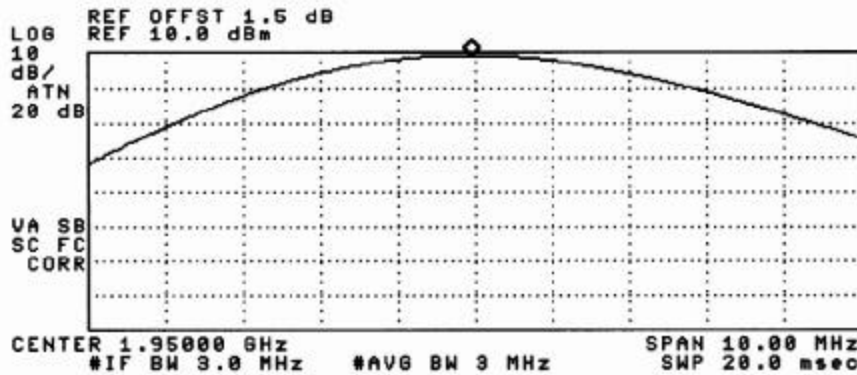
ACTV DET: PEAK
MEAS DET: PEAK QP AVG
MKR 1.93990 GHz
9.52 dBm



275

10:42:57 MAY 31, 2002
LGC 1900M (GSM OUTPUT POWER, D-B) Downlink, Mid Ch.

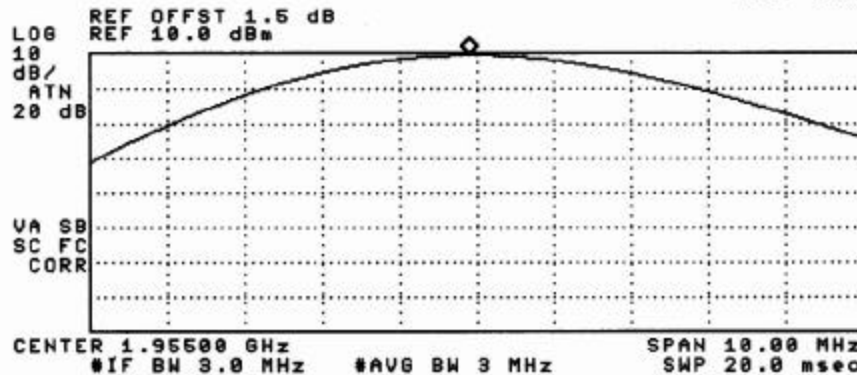
ACTV DET: PEAK
MEAS DET: PEAK QP AVG
MKR 1.94995 GHz
9.21 dBm



276

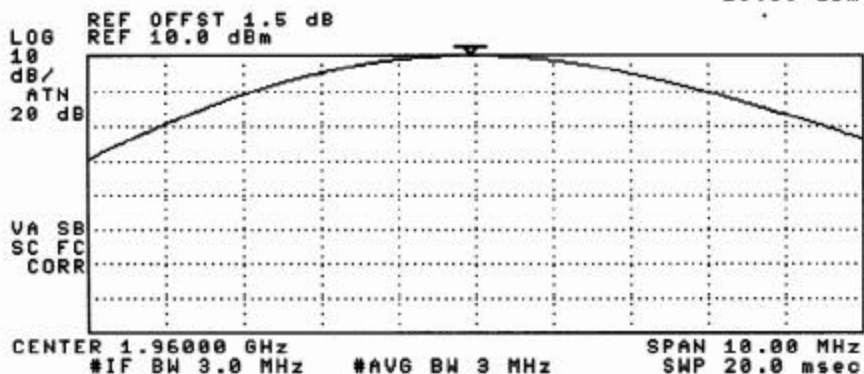
10:43:22 MAY 31, 2002
LGC 1900M (GSM OUTPUT POWER, D-B) Downlink, Mid Ch.

ACTV DET: PEAK
MEAS DET: PEAK QP AVG
MKR 1.95490 GHz
9.32 dBm



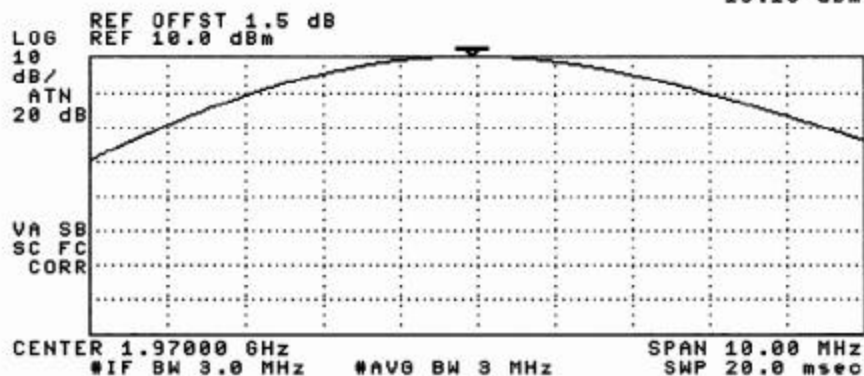
277

10:44:45 MAY 31, 2002
 LGC 1900M (GSM OUTPUT POWER, B-E) Downlink, Mid Ch.
 ACTV DET: PEAK
 MEAS DET: PEAK QP AVG
 MKR 1.95993 GHz
 10.00 dBm



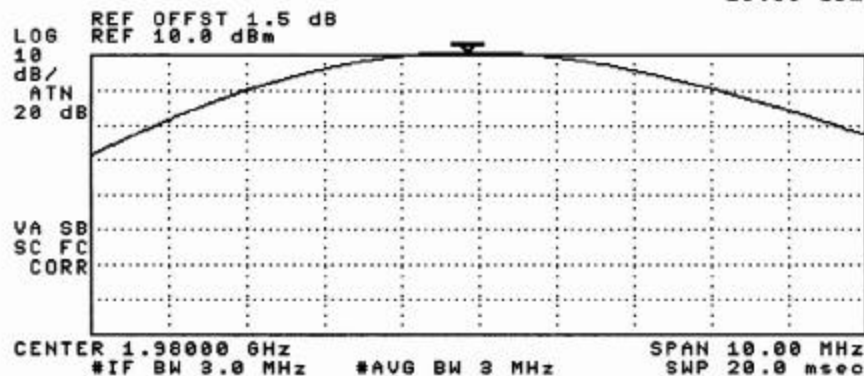
278

10:46:18 MAY 31, 2002
 LGC 1900M (GSM OUTPUT POWER, E-F) Downlink, Mid Ch.
 ACTV DET: PEAK
 MEAS DET: PEAK QP AVG
 MKR 1.96993 GHz
 10.10 dBm



279

10:47:22 MAY 31, 2002
 LGC 1900M (GSM OUTPUT POWER, F-C) Downlink, Mid Ch.
 ACTV DET: PEAK
 MEAS DET: PEAK QP AVG
 MKR 1.97985 GHz
 10.00 dBm

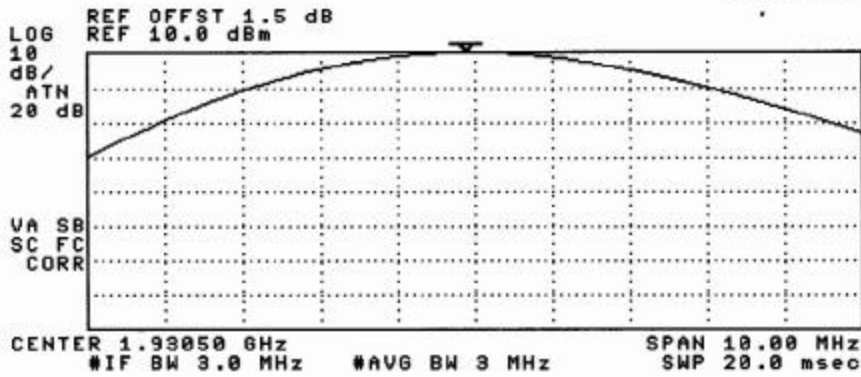


280

10:10:51 MAY 28, 2002

L6C 1900M (GSM OUTPUT POWER) Downlink, Lo Ch.

ACTV DET: PEAK
MEAS DET: PEAK QP AVG
MKR 1.93030 GHz
10.01 dBm

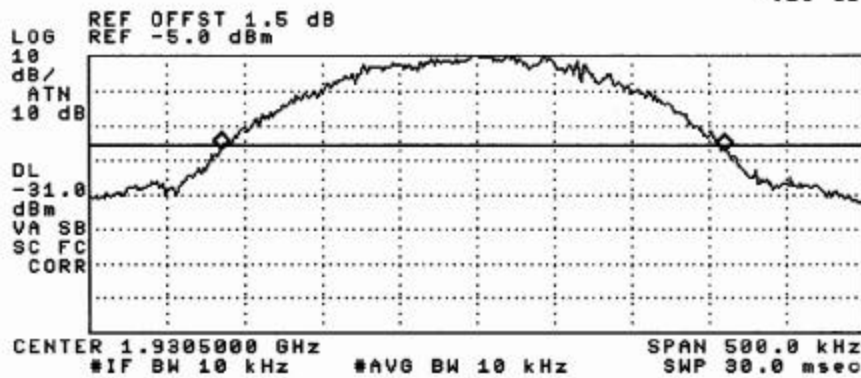


281

10:16:42 MAY 28, 2002

L6C 1900M (GSM INPUT BANDWIDTH) Downlink, Lo Ch.

ACTV DET: PEAK
MEAS DET: PEAK QP AVG
MKR 325.0 kHz
-0.28 dB

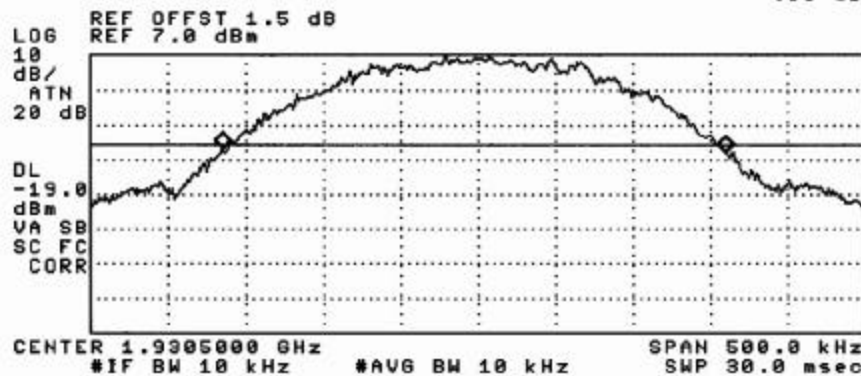


282

10:18:41 MAY 28, 2002

L6C 1900M (GSM OUTPUT BANDWIDTH) Downlink, Lo Ch.

ACTV DET: PEAK
MEAS DET: PEAK QP AVG
MKR 325.0 kHz
-0.50 dB

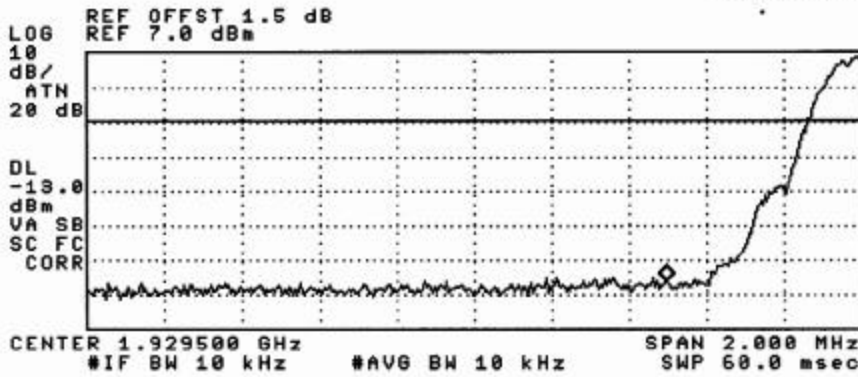


283

10:24:45 MAY 28, 2002

L6C 1900M (GSM BOTTOM BLOCK EDGE) Downlink, Lo Ch.

ACTV DET: PEAK
MEAS DET: PEAK QP AVG
MKR 1.929995 GHz
-59.27 dBm

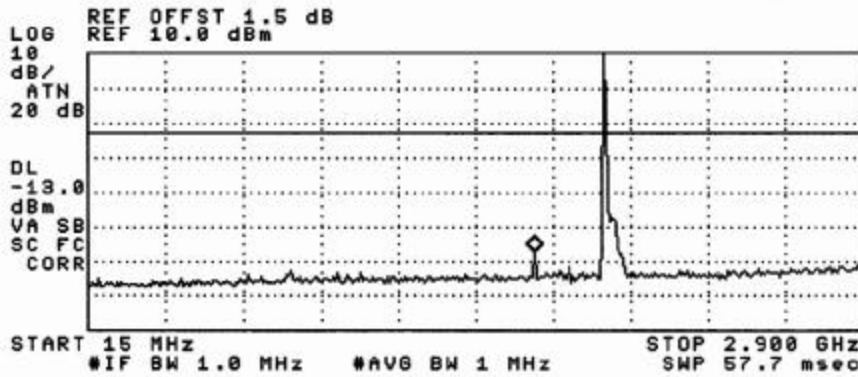


284

10:26:05 MAY 28, 2002

L6C 1900M (GSM OUT-OF-BAND) Downlink, Lo Ch.

ACTV DET: PEAK
MEAS DET: PEAK QP AVG
MKR 1.674 GHz
-47.22 dBm

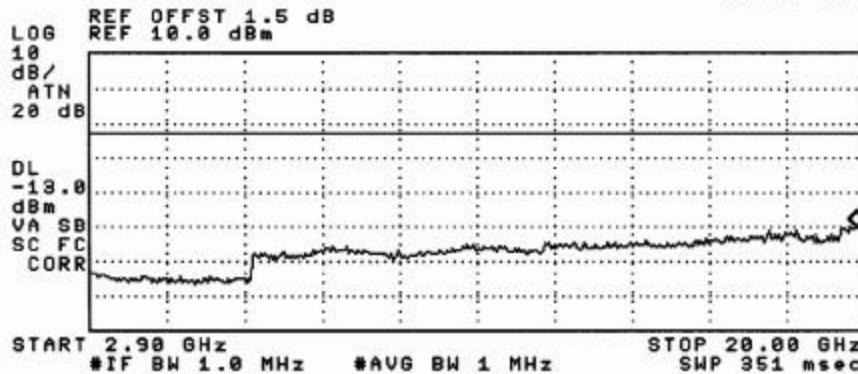


285

10:26:25 MAY 28, 2002

L6C 1900M (GSM OUT-OF-BAND) Downlink, Lo Ch.

ACTV DET: PEAK
MEAS DET: PEAK QP AVG
MKR 19.83 GHz
-39.94 dBm

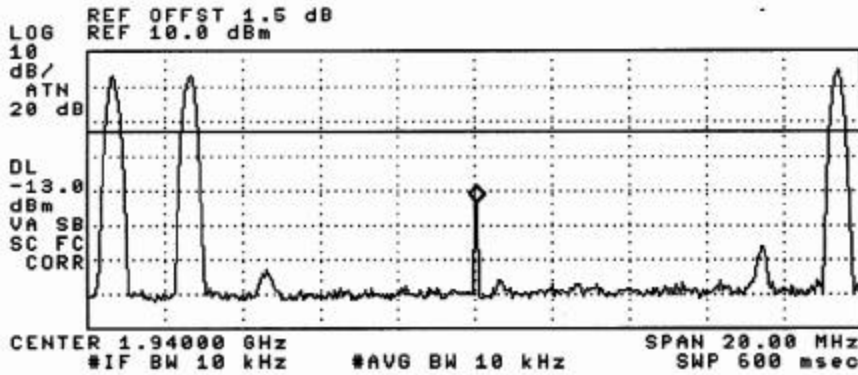


286

09:01:49 MAY 31, 2002

L6C 1900M (GSM INTERMOD) Downlink, Lo Ch.

ACTV DET: PEAK
MEAS DET: PEAK QP AVG
MKR 1.94005 GHz
-33.69 dBm

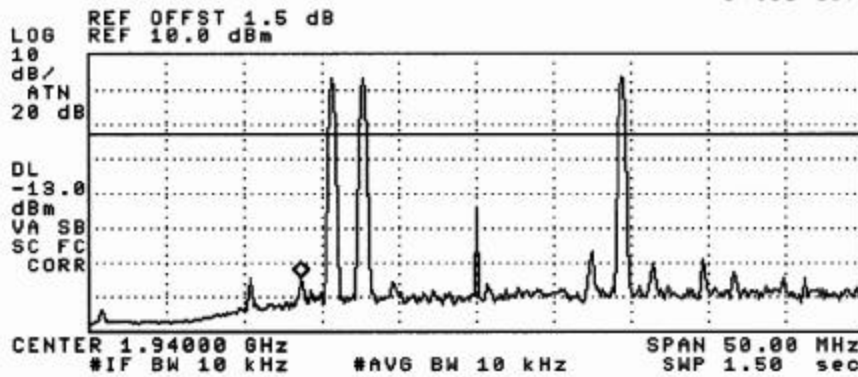


287

09:02:19 MAY 31, 2002

L6C 1900M (GSM INTERMOD) Downlink, Lo Ch.

ACTV DET: PEAK
MEAS DET: PEAK QP AVG
MKR 1.92863 GHz
-54.52 dBm

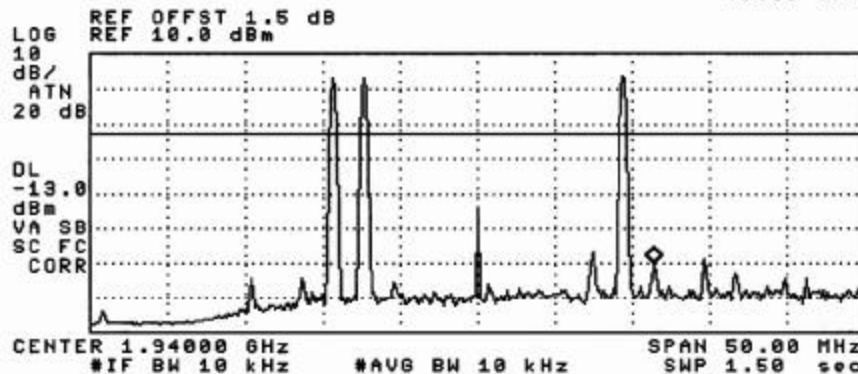


288

09:02:35 MAY 31, 2002

L6C 1900M (GSM INTERMOD) Downlink, Lo Ch.

ACTV DET: PEAK
MEAS DET: PEAK QP AVG
MKR 1.95138 GHz
-49.99 dBm



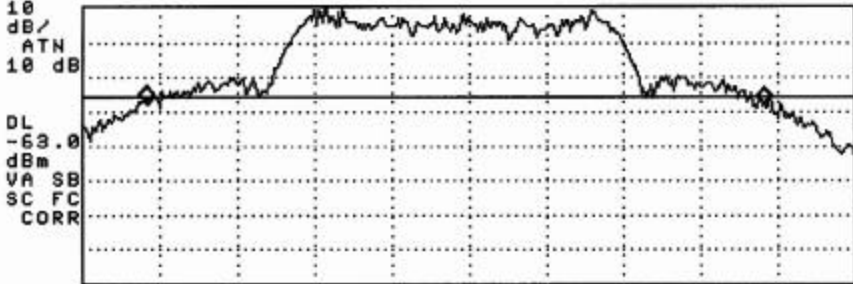
289

10:02:34 MAY 23, 2002

LGC 800MHz (AMPS OUTPUT BANDWIDTH) Uplink, Low Ch.

ACTV DET: PEAK
MEAS DET: PEAK QP AVG
MKRa 40.00 kHz
-.81 dB

LOG REF OFFST 1.0 dB
REF -37.0 dBm



CENTER 824.10000 MHz SPAN 50.00 kHz
#IF BW 1.0 kHz #AVG BW 1 kHz SWP 300 msec

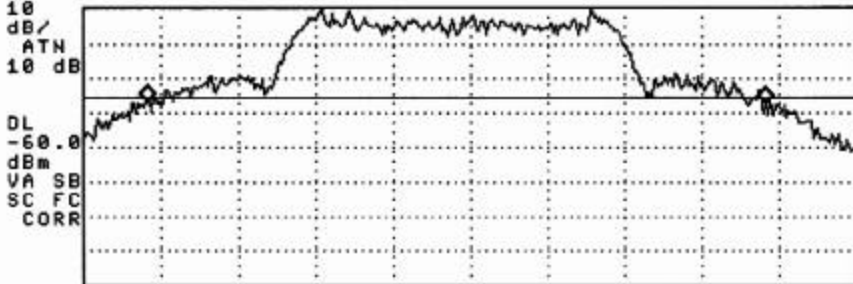
29

10:04:56 MAY 23, 2002

LGC 800MHz (AMPS OUTPUT BANDWIDTH) Uplink, Mid Ch.

ACTV DET: PEAK
MEAS DET: PEAK QP AVG
MKRa 40.00 kHz
-.62 dB

LOG REF OFFST 1.0 dB
REF -34.0 dBm



CENTER 836.50000 MHz SPAN 50.00 kHz
#IF BW 1.0 kHz #AVG BW 1 kHz SWP 300 msec

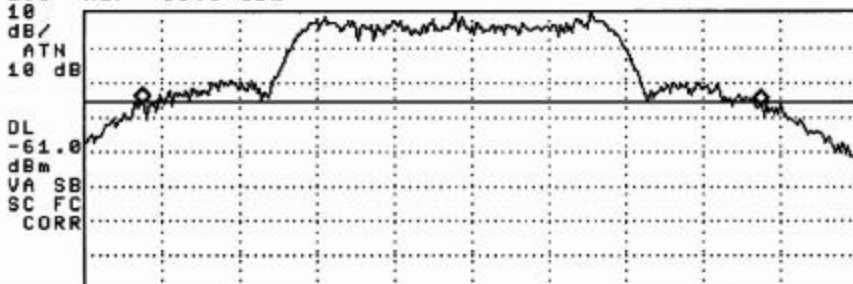
30

10:05:51 MAY 23, 2002

LGC 800MHz (AMPS OUTPUT BANDWIDTH) Uplink, Hi Ch.

ACTV DET: PEAK
MEAS DET: PEAK QP AVG
MKRa 40.00 kHz
-.21 dB

LOG REF OFFST 1.0 dB
REF -35.0 dBm



CENTER 848.90000 MHz SPAN 50.00 kHz
#IF BW 1.0 kHz #AVG BW 1 kHz SWP 300 msec

31