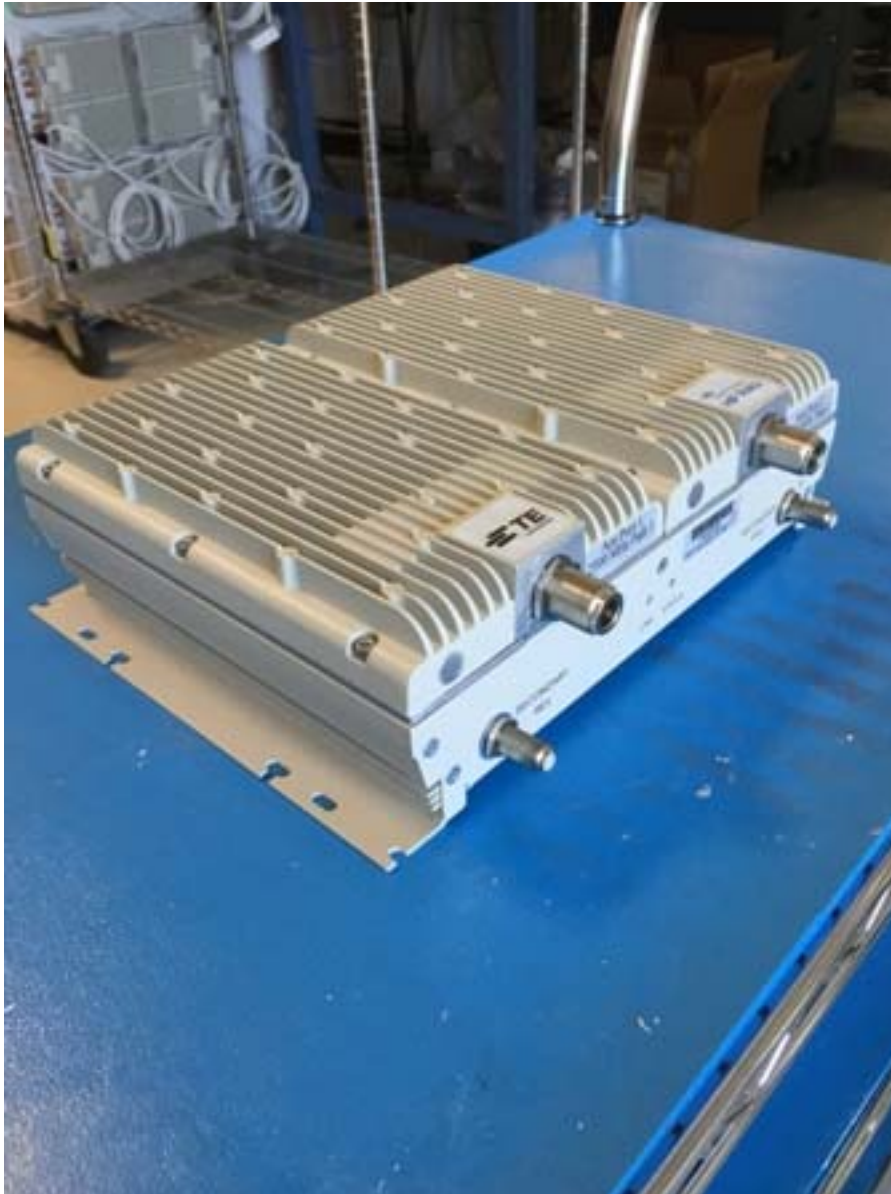


Spectrum 2300 MIMO SRAU External Photos

Front/Side View



Front/Side View



Rear View



Top View



TE San Jose, CA, 95131
2300W2300 M100

For use with Intel® Xeon® Processors
 www.te.com
 KPN742R2-0 REV. A1 07/08/2008

WARNING: This is NOT a CONSUMER device. It is designed for installation in ULX, LX, and LX2 systems and is not to be used in consumer applications. You must have an ULX, LX, or LX2 system to operate this device. If misused, it may result in significant hardware damage, including possible fire or even of \$100,000 for each continuing violation.

Suitable for use in environmental air space in accordance with Section 300-22 (1) of the National Electrical Code, and Sections 2-128, 12-010 (3), and 12-100 of the Canadian Electrical Code, Part 1, C22.1.

