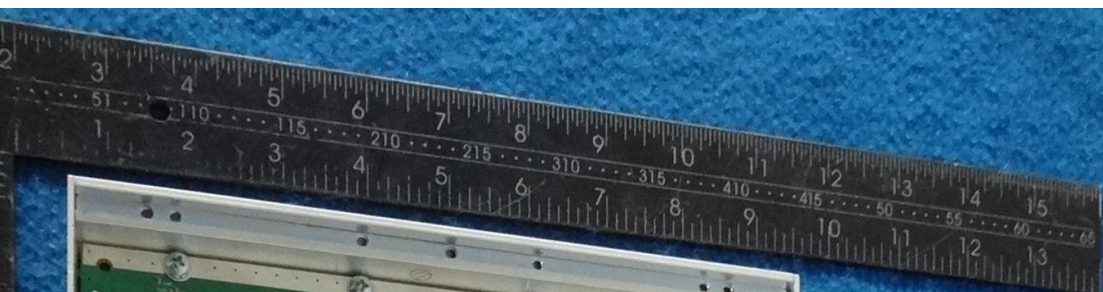
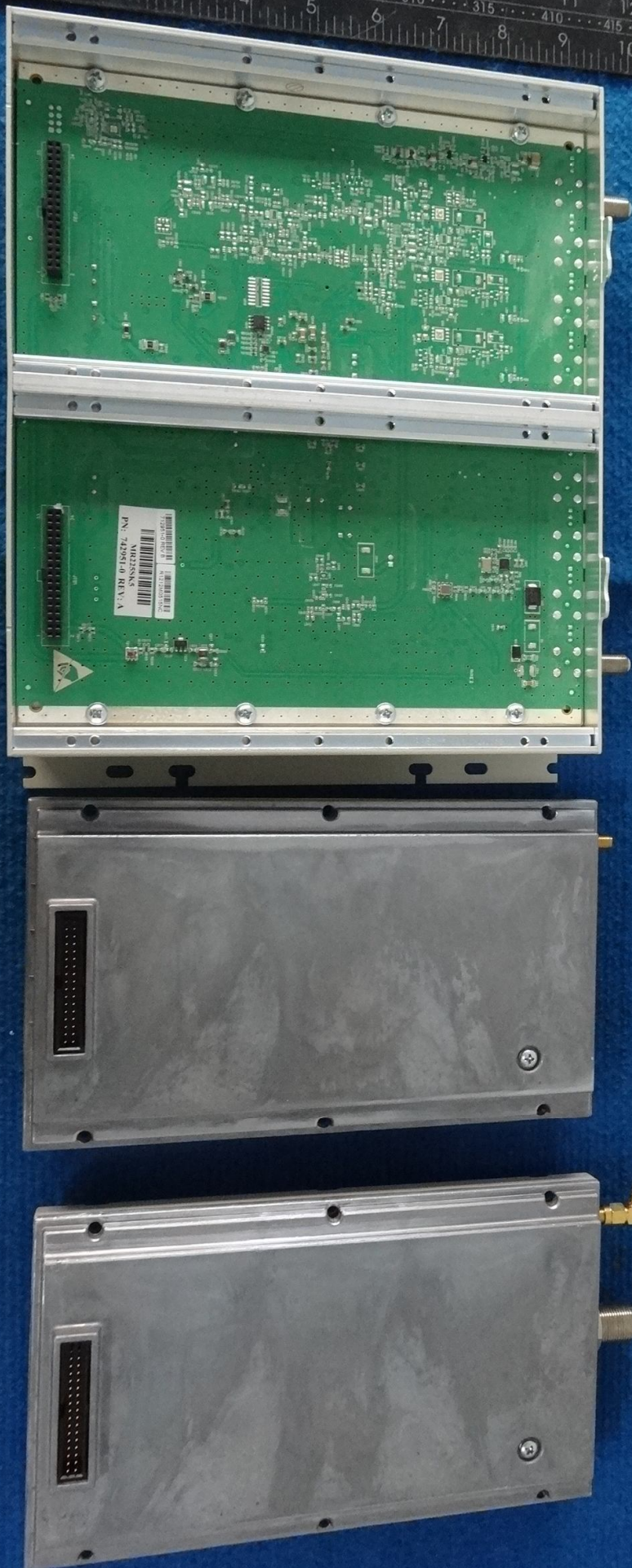
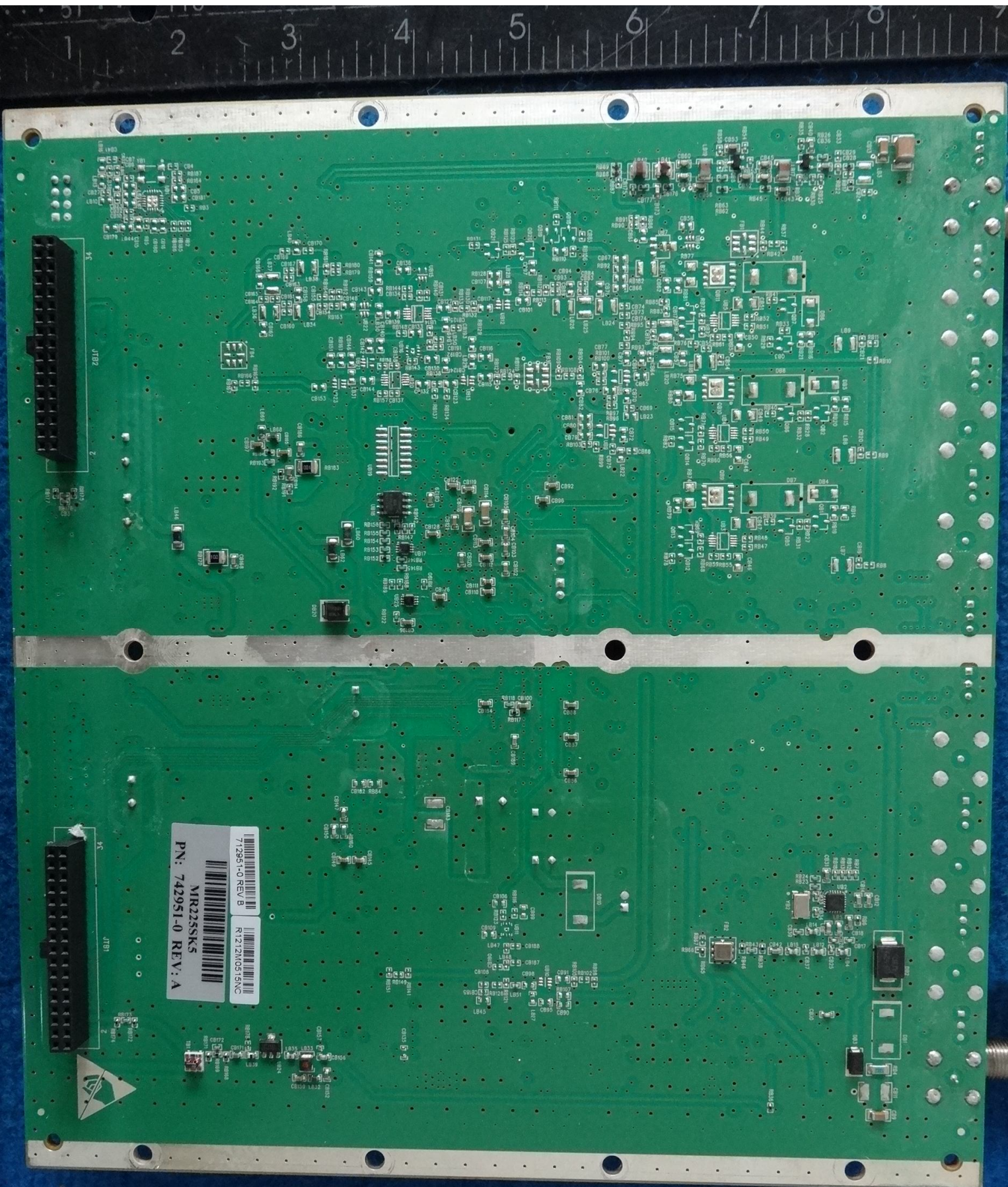


INCHES	CENTIMETERS	MM	FR. FT.	MM	INCHES	MM	INCHES	MM
0	0	0	0	0	0	0	0	0
1	25.4	25	1/8	31.75	1	25.4	1	25.4
2	50.8	51	1/4	63.5	2	50.8	2	50.8
3	76.2	76	3/8	95.25	3	76.2	3	76.2
4	101.6	102	1/2	127	4	101.6	4	101.6
5	127	127	5/8	158.75	5	127	5	127
6	152.4	152	3/4	190.5	6	152.4	6	152.4
7	177.8	178	7/8	222.25	7	177.8	7	177.8
8	203.2	203	1	254	8	203.2	8	203.2
9	228.6	229	1 1/8	285.75	9	228.6	9	228.6
10	254	254	1 1/4	317.5	10	254	10	254
11	279.4	280	1 1/2	349.25	11	279.4	11	279.4
12	304.8	305	1 1/4	381	12	304.8	12	304.8
13	330.2	330	1 3/8	412.75	13	330.2	13	330.2
14	355.6	356	1 1/2	444.5	14	355.6	14	355.6
15	381	381	1 5/8	476.25	15	381	15	381
16	406.4	406	1 3/4	508	16	406.4	16	406.4
17	431.8	432	1 7/8	539.75	17	431.8	17	431.8
18	457.2	457	2	571.5	18	457.2	18	457.2
19	482.6	483	2 1/8	603.25	19	482.6	19	482.6
20	508	508	2 1/4	635	20	508	20	508
21	533.4	533	2 1/2	666.75	21	533.4	21	533.4
22	558.8	559	2 3/8	698.5	22	558.8	22	558.8
23	584.2	584	2 1/2	730.25	23	584.2	23	584.2







JTB2  
2

MR225SKS  
PN: 742951-0 REV: A

712951-0 REV: B

R121210515NC



JTB1