

Plots of System Verification

Appendix A. Plots of System Verification

The plots for system verification are shown as follows.

Plots of System Verification

Measurement Report

S01 System Check_H2450_231026

Device under Test Properties

Model, Manufacturer	Dimensions [mm]	IMEI	DUT Type
Dipole,	10.0 x 10.0 x 300.0		

Exposure Conditions

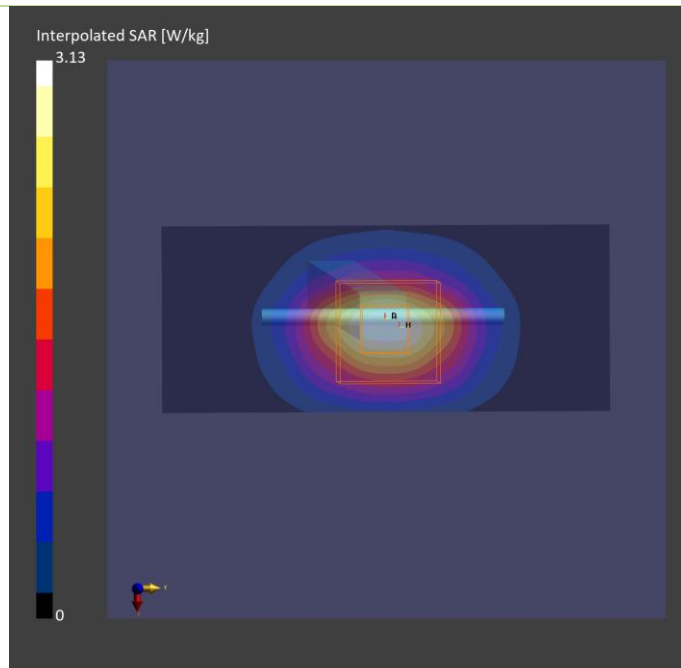
Phantom Section, TSL	Position, Test Distance [mm]	Band	Group, UID	Frequency [MHz], Channel Number	Conversion Factor	TSL Conductivity [S/m]	TSL Permittivity
Flat,	,		CW, 0--	2450.000, 0	7.39	1.86	41.2

Hardware Setup

Phantom	TSL, Measured Date	Probe, Calibration Date	DAE, Calibration Date
ELI V8.0 (20deg probe tilt) - 2105	H06T27N6 , 2023-Oct-26	EX3DV4 - SN7797, 2022-12-12	DAE4 Sn1431, 2023-08-24

Scan Setup

	Area Scan	Zoom Scan	Measurement Results		
			Area Scan	Zoom Scan	
Grid Extents [mm]	40.0 x 96.0	30.0 x 30.0 x 30.0	Date	2023-10-26	2023-10-26
Grid Steps [mm]	10.0 x 12.0	5.0 x 5.0 x 1.5	psSAR1g [W/kg]	2.40	2.41
Sensor Surface [mm]	3.0	1.4	psSAR10g [W/kg]	1.14	1.12
			Power Drift [dB]	0.01	-0.01



Plots of System Verification

Measurement Report

S02 System Check_H5250_231110

Device under Test Properties

Model, Manufacturer	Dimensions [mm]	IMEI	DUT Type
Dipole,	10.0 x 10.0 x 300.0		

Exposure Conditions

Phantom Section, TSL	Position, Test Distance [mm]	Band	Group, UID	Frequency [MHz], Channel Number	Conversion Factor	TSL Conductivity [S/m]	TSL Permittivity
Flat,	,		CW,	5250.0, 0	5.48	4.62	35.8

Hardware Setup

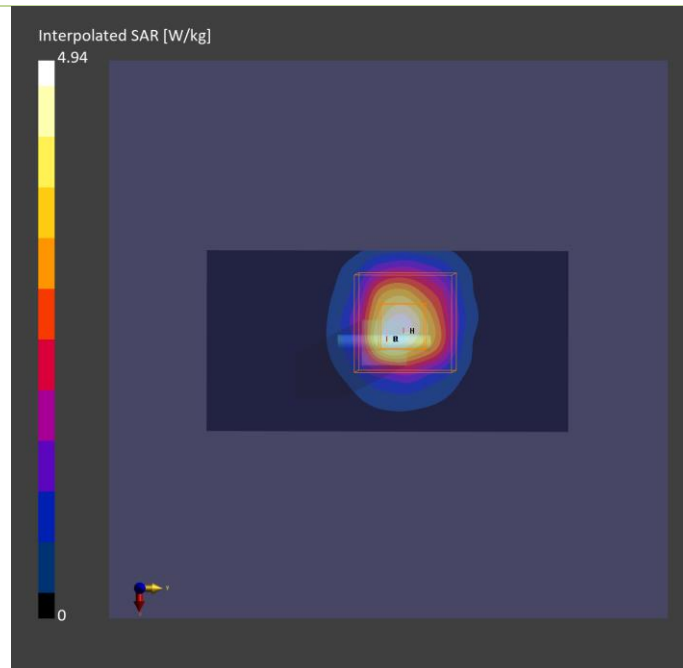
Phantom	TSL, Measured Date	Probe, Calibration Date	DAE, Calibration Date
ELI V5.0 (20deg probe tilt) - 1245	H51T72N10 , 2023-Nov-10	EX3DV4 - SN3650, 2023-09-19	DAE4 Sn1761, 2022-12-08

Scan Setup

	Area Scan	Zoom Scan
Grid Extents [mm]	40.0 x 80.0	24.0 x 24.0 x 22.0
Grid Steps [mm]	10.0 x 10.0	4.0 x 4.0 x 1.4
Sensor Surface [mm]	3.0	1.4

Measurement Results

	Area Scan	Zoom Scan
Date	2023-11-10	2023-11-10
psSAR1g [W/kg]	3.49	4.13
psSAR10g [W/kg]	1.12	1.18
Power Drift [dB]	-0.02	-0.07



Plots of System Verification

Measurement Report S03 System Check_H5800_231109 Device under Test Properties

Model, Manufacturer	Dimensions [mm]	IMEI	DUT Type
Device,	10.0 x 10.0 x 300.0		

Exposure Conditions

Phantom Section, TSL	Position, Test Distance [mm]	Band	Group, UID	Frequency [MHz], Channel Number	Conversion Factor	TSL Conductivity [S/m]	TSL Permittivity
Flat,	,		CW,	5800.0, 0	5.1	5.09	34

Hardware Setup

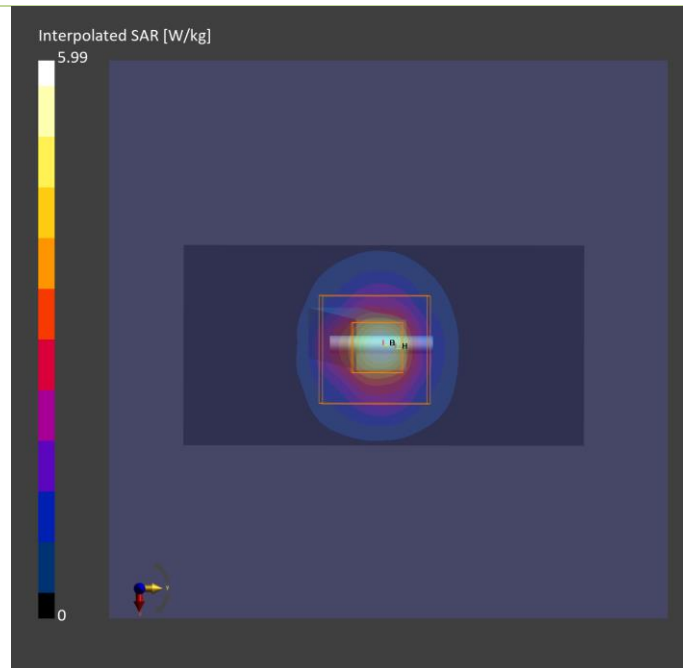
Phantom	TSL, Measured Date	Probe, Calibration Date	DAE, Calibration Date
ELI V5.0 (20deg probe tilt) - 1245	H51T72N10 , 2023-Nov-09	EX3DV4 – SN7696, 2023-01-25	DAE4 Sn1590, 2023-09-14

Scan Setup

	Area Scan	Zoom Scan
Grid Extents [mm]	40.0 x 80.0	24.0 x 24.0 x 22.0
Grid Steps [mm]	10.0 x 10.0	4.0 x 4.0 x 1.4
Sensor Surface [mm]	3.0	1.4

Measurement Results

	Area Scan	Zoom Scan
Date	2023-11-09	2023-11-09
psSAR1g [W/kg]	3.81	3.98
psSAR10g [W/kg]	1.09	1.13
Power Drift [dB]	0.01	0.04



Plots of System Verification

Measurement Report

S04 System Check_H2450_231024

Device under Test Properties

Model, Manufacturer	Dimensions [mm]	IMEI	DUT Type
Dipole,	10.0 x 10.0 x 30.0		

Exposure Conditions

Phantom Section, TSL	Position, Test Distance [mm]	Band	Group, UID	Frequency [MHz], Channel Number	Conversion Factor	TSL Conductivity [S/m]	TSL Permittivity
Flat, HSL	,			2450.0, 0	7.92	1.77	40.7

Hardware Setup

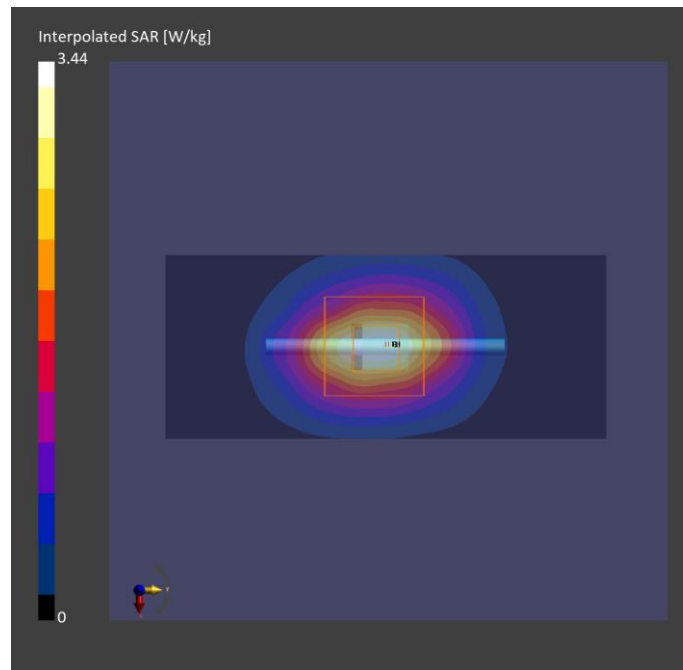
Phantom	TSL, Measured Date	Probe, Calibration Date	DAE, Calibration Date
ELI V5.0 (20deg probe tilt) - 1245	H06T27N10 , 2023-Oct-24	EX3DV4 - SN3650, 2023-09-19	DAE4 Sn1761, 2022-12-08

Scan Setup

	Area Scan	Zoom Scan
Grid Extents [mm]	48.0 x 96.0	30.0 x 30.0 x 30.0
Grid Steps [mm]	12.0 x 12.0	5.0 x 5.0 x 5.0
Sensor Surface [mm]	3.0	1.4

Measurement Results

	Area Scan	Zoom Scan
Date	2023-10-24	2023-10-24
psSAR1g [W/kg]	2.62	2.61
psSAR10g [W/kg]	1.22	1.19
Power Drift [dB]	0.00	0.01



Appendix B. Plots of Measurement

The SAR plots for highest measured SAR in each exposure configuration, wireless mode and frequency band combination are shown as follows.

Plots of Measurement

Measurement Report

P01 WLAN2.4G_802.11b_Rear Face_5mm_Ch6

Device under Test Properties

Model, Manufacturer	Dimensions [mm]	IMEI	DUT Type
BEMI-WTW-P23090647,	112.0 x 160.0 x 10.0		Tablet

Exposure Conditions

Phantom Section, TSL	Position, Test Distance [mm]	Band	Group, UID	Frequency [MHz], Channel Number	Conversion Factor	TSL Conductivity [S/m]	TSL Permittivity
Flat,	Rear Face, 5.00	WLAN 2.4GHz	WLAN, 10012-CAB	2437.000, 6	7.39	1.85	41.2

Hardware Setup

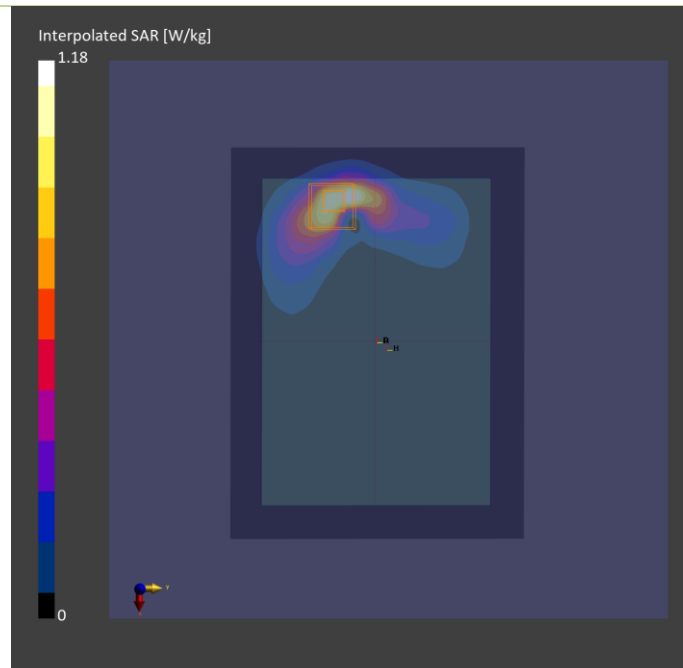
Phantom	TSL, Measured Date	Probe, Calibration Date	DAE, Calibration Date
ELI V8.0 (20deg probe tilt) - 2105	H06T27N6 , 2023-Oct-26	EX3DV4 - SN7797, 2022-12-12	DAE4 Sn1431, 2023-08-24

Scan Setup

	Area Scan	Zoom Scan
Grid Extents [mm]	192.0 x 144.0	30.0 x 30.0 x 30.0
Grid Steps [mm]	12.0 x 12.0	5.0 x 5.0 x 5.0
Sensor Surface [mm]	3.0	1.4

Measurement Results

	Area Scan	Zoom Scan
Date	2023-10-26	2023-10-26
psSAR1g [W/kg]	0.850	0.940
psSAR10g [W/kg]	0.403	0.415
Power Drift [dB]	0.03	0.01
M2/M1 [%]		41.3
Dist 3dB Peak [mm]		5.7



Plots of Measurement

Measurement Report

P02 WLAN5.2G_802.11ac VHT80_Bottom Side_5mm_Ch42

Device under Test Properties

Model, Manufacturer	Dimensions [mm]	IMEI	DUT Type
BEMI-WTW-P23090647,	112.0 x 160.0 x 10.0		Tablet

Exposure Conditions

Phantom Section, TSL	Position, Test Distance [mm]	Band	Group, UID	Frequency [MHz], Channel Number	Conversion Factor	TSL Conductivity [S/m]	TSL Permittivity
Flat,	Bottom Side, 5.00	WLAN 5GHz	WLAN, 10544-AAD	5210.000, 42	5.48	4.58	35.9

Hardware Setup

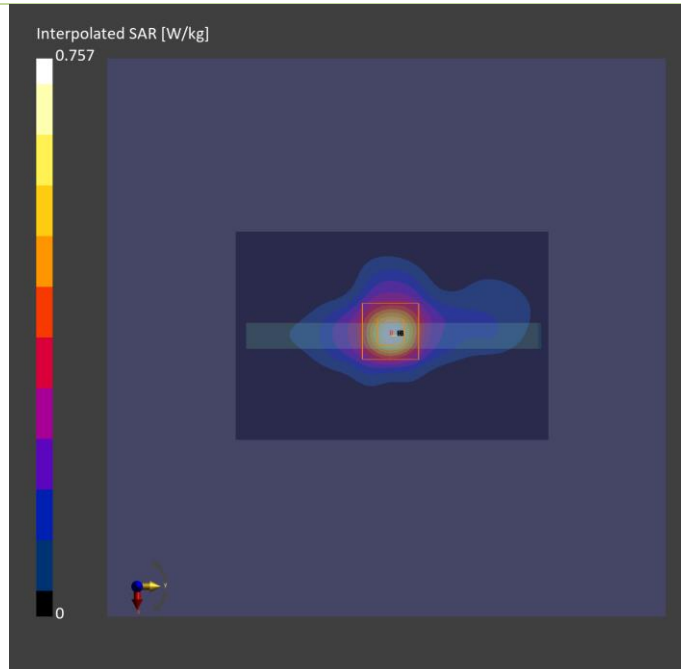
Phantom	TSL, Measured Date	Probe, Calibration Date	DAE, Calibration Date
ELI V5.0 (20deg probe tilt) - 1245	H51T72N10 , 2023-Nov-10	EX3DV4 - SN3650, 2023-09-19	DAE4 Sn1761, 2022-12-08

Scan Setup

	Area Scan	Zoom Scan
Grid Extents [mm]	80.0 x 120.0	24.0 x 24.0 x 22.0
Grid Steps [mm]	10.0 x 10.0	4.0 x 4.0 x 1.4
Sensor Surface [mm]	3.0	1.4

Measurement Results

	Area Scan	Zoom Scan
Date	2023-11-10	2023-11-10
psSAR1g [W/kg]	0.520	0.656
psSAR10g [W/kg]	0.192	0.189
Power Drift [dB]	-0.12	0.02
M2/M1 [%]		68.2
Dist 3dB Peak [mm]		8.6



Plots of Measurement

Measurement Report

P03 WLAN5.8G_802.11ac VHT80_Bottom Side_5mm_Ch155

Device under Test Properties

Model, Manufacturer	Dimensions [mm]	IMEI	DUT Type
BEMI-WTW-P23090647,	112.0 x 160.0 x 10.0		Tablet

Exposure Conditions

Phantom Section, TSL	Position, Test Distance [mm]	Band	Group, UID	Frequency [MHz], Channel Number	Conversion Factor	TSL Conductivity [S/m]	TSL Permittivity
Flat,	Bottom Side, 5.00	WLAN 5GHz	WLAN, 10544-AAD	5775.000, 155	5.1	5.06	34.1

Hardware Setup

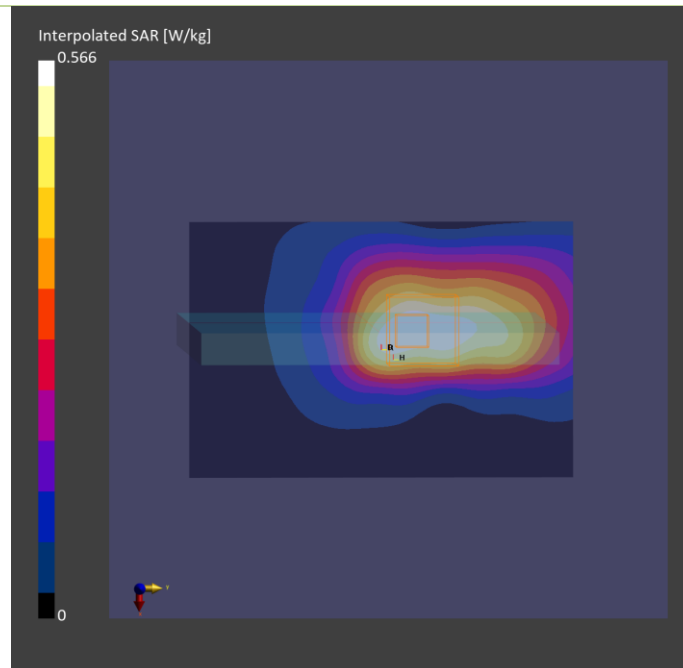
Phantom	TSL, Measured Date	Probe, Calibration Date	DAE, Calibration Date
ELI V5.0 (20deg probe tilt) - 1245	H51T72N10 , 2023-Nov-09	EX3DV4 - SN7696, 2023-01-25	DAE4 Sn1590, 2023-09-14

Scan Setup

	Area Scan	Zoom Scan
Grid Extents [mm]	80.0 x 120.0	24.0 x 24.0 x 22.0
Grid Steps [mm]	10.0 x 10.0	4.0 x 4.0 x 1.4
Sensor Surface [mm]	3.0	1.4

Measurement Results

	Area Scan	Zoom Scan
Date	2023-11-09	2023-11-09
psSAR1g [W/kg]	0.459	0.729
psSAR10g [W/kg]	0.198	0.299
Power Drift [dB]	0.07	0.14
M2/M1 [%]		75.6
Dist 3dB Peak [mm]		7.4



Plots of Measurement

Measurement Report

P04 BT_BDR_Rear Face_5mm_Ch78_Ant 0

Device under Test Properties

Model, Manufacturer	Dimensions [mm]	IMEI	DUT Type
BEMI-WTW-P23090647,	112.0 x 160.0 x 10.0		Tablet

Exposure Conditions

Phantom Section, TSL	Position, Test Distance [mm]	Band	Group, UID	Frequency [MHz], Channel Number	Conversion Factor	TSL Conductivity [S/m]	TSL Permittivity
Flat, -	Rear Face, 5.00	ISM 2.4 GHz Band	Bluetooth, 10032-CAA	2480.000, 78	7.92	1.79	40.6

Hardware Setup

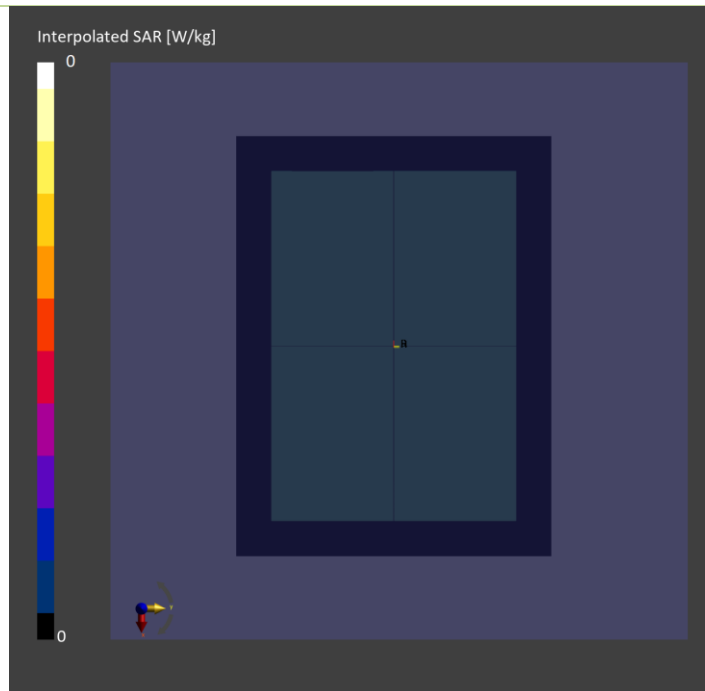
Phantom	TSL, Measured Date	Probe, Calibration Date	DAE, Calibration Date
ELI V5.0 (20deg probe tilt) - 1245	H06T27N10 , 2023-Oct-24	EX3DV4 - SN3650, 2023-09-19	DAE4 Sn1761, 2022-12-08

Scan Setup

	Area Scan	Zoom Scan
Grid Extents [mm]	192.0 x 144.0	30.0 x 30.0 x 30.0
Grid Steps [mm]	12.0 x 12.0	5.0 x 5.0 x 5.0
Sensor Surface [mm]	3.0	1.4

Measurement Results

	Area Scan	Zoom Scan
Date	2023-10-24	2023-10-24
psSAR1g [W/kg]	0	0
psSAR10g [W/kg]	0	0
Power Drift [dB]	0.00	0.00





BUREAU
VERITAS

Appendix D. Maximum Target Conducted Power

The maximum conducted average power (Unit: dBm) including tune-up tolerance is shown as below.

Tune-up Power (Full)			
WLAN 2.4GHz			
Mode	Channel	Frequency	SISO Ant 0 Max Tune up
802.11b	1	2412	17.0
	6	2437	17.0
	11	2462	17.0
802.11g	1	2412	17.0
	6	2437	17.0
	11	2462	17.0
802.11n HT20	1	2412	17.0
	6	2437	17.0
	11	2462	17.0



Tune-up Power (Full)			
Bluetooth			
Mode	Channel	Frequency	Ant 0 Max Tune-up
BR / EDR	0	2402	4.0
	39	2441	4.0
	78	2480	4.0
LE	0	2402	4.0
	19	2440	4.0
	39	2480	4.0



Tune-up Power (Full)			
WLAN 5.2GHz			
Mode	Channel	Frequency	SISO Ant 0 Max Tune up
802.11a	36	5180	14.0
	40	5200	14.0
	44	5220	14.0
	48	5240	14.0
802.11n HT20	36	5180	14.0
	40	5200	14.0
	44	5220	14.0
	48	5240	14.0
802.11n HT40	38	5190	14.0
	46	5230	14.0
802.11ac VHT20	36	5180	14.0
	40	5200	14.0
	44	5220	14.0
	48	5240	14.0
802.11ac VHT40	38	5190	14.0
	46	5230	14.0
802.11ac VHT80	42	5210	14.0

Tune-up Power (Full)			
WLAN 5.8GHz			
Mode	Channel	Frequency	SISO Ant 0 Max Tune up
802.11a	149	5745	16.0
	153	5765	16.0
	157	5785	16.0
	161	5805	16.0
	165	5825	16.0
802.11n HT20	149	5745	16.0
	153	5765	16.0
	157	5785	16.0
	161	5805	16.0
	165	5825	16.0
802.11n HT40	151	5755	16.0
	159	5795	16.0
802.11ac VHT20	149	5745	16.0
	153	5765	16.0
	157	5785	16.0
	161	5805	16.0
	165	5825	16.0
802.11ac VHT40	151	5755	16.0
	159	5795	16.0
802.11ac VHT80	155	5775	16.0



**BUREAU
VERITAS**

Appendix E. Measured Conducted Power Result

The measuring conducted power (Unit: dBm) are shown as below.



Conducted Power (Full)			
WLAN2.4GHz Ant 0			
Mode	Channel	Frequency	SISO Ant 0 Avg. Power
802.11b	1	2412	16.85
	6	2437	16.83
	11	2462	16.97
802.11g	1	2412	16.62
	6	2437	16.69
	11	2462	16.66
802.11n HT20	1	2412	16.78
	6	2437	16.56
	11	2462	16.71



Conducted Power (Full)			
Bluetooth Ant 0			
Mode	Channel	Frequency	SISO Ant 0 Avg. Power
BR / EDR	0	2402	3.95
	39	2441	3.92
	78	2480	3.99
LE	0	2402	3.91
	19	2440	3.89
	39	2480	3.92

Conducted Power (Full)			
WLAN 5.2GHz Ant 0			
Mode	Channel	Frequency	SISO Ant 0 Avg. Power
802.11a	36	5180	13.66
	40	5200	13.50
	44	5220	13.65
	48	5240	13.58
802.11n HT20	36	5180	13.56
	40	5200	13.28
	44	5220	13.60
	48	5240	13.58
802.11n HT40	38	5190	13.58
	46	5230	13.50
802.11ac VHT20	36	5180	13.58
	40	5200	13.58
	44	5220	13.70
	48	5240	13.60
802.11ac VHT40	38	5190	13.62
	46	5230	13.56
802.11ac VHT80	42	5210	13.89

Conducted Power (Full)			
WLAN 5.8GHz Ant 0			
Mode	Channel	Frequency	SISO Ant 0 Avg. Power
802.11a	149	5745	15.12
	153	5765	15.07
	157	5785	15.00
	161	5805	15.00
	165	5825	15.03
802.11n HT20	149	5745	15.19
	153	5765	15.18
	157	5785	15.13
	161	5805	15.11
	165	5825	15.18
802.11n HT40	151	5755	15.21
	159	5795	15.24
802.11ac VHT20	149	5745	15.29
	153	5765	15.26
	157	5785	15.21
	161	5805	15.21
	165	5825	15.21
802.11ac VHT40	151	5755	15.29
	159	5795	15.29
802.11ac VHT80	155	5775	15.32



BUREAU
VERITAS

Appendix F. SAR Test Result

SAR Results for Body Exposure Condition.

Note:

1. SAR testing for WLAN / BT was performed on the maximum power mode.
2. The "< 0.001" means there is no SAR value or the SAR is too low to be measured.

Body SAR Test Result

System & Position														DUT Configuration		SAR				
Plot No.	Band	Mode	Test Position	Separation Distance (mm)	Channel	Ant Status	Duty Cycle	Crest Factor	Max. Tune-up Power (dBm)	Measured Conducted Power (dBm)	Scaling Factor	Power Drift (dB)	Measured SAR-1g (W/kg)	Scaled SAR-1g (W/kg)						
1	WLAN2.4G	802.11b	Front Face	5	6	Ant 0	97.60	1.02	17.00	16.83	1.04	0.08	0.671	0.71						
	WLAN2.4G	802.11b	Rear Face	5	6	Ant 0	97.60	1.02	17.00	16.83	1.04	0.01	0.94	1.00						
	WLAN2.4G	802.11b	Left Side	5	6	Ant 0	97.60	1.02	17.00	16.83	1.04	-0.13	0.118	0.13						
	WLAN2.4G	802.11b	Right Side	5	6	Ant 0	97.60	1.02	17.00	16.83	1.04	0	<0.001	0.00						
	WLAN2.4G	802.11b	Top Side	5	6	Ant 0	97.60	1.02	17.00	16.83	1.04	0	<0.001	0.00						
	WLAN2.4G	802.11b	Bottom Side	5	6	Ant 0	97.60	1.02	17.00	16.83	1.04	-0.01	0.675	0.72						
	WLAN2.4G	802.11b	Rear Face	5	1	Ant 0	97.60	1.02	17.00	16.85	1.04	-0.18	0.866	0.92						
	WLAN2.4G	802.11b	Rear Face	5	11	Ant 0	97.60	1.02	17.00	16.97	1.01	0.07	0.912	0.94						
	WLAN2.4G	802.11b	Rear Face	5	6	Ant 0	97.60	1.02	17.00	16.83	1.04	0.01	0.911	0.97						
2	WLAN5.2G	802.11ac VHT80	Front Face	5	42	Ant 0	87.50	1.14	14.00	13.89	1.03	0.18	0.366	0.43						
	WLAN5.2G	802.11ac VHT80	Rear Face	5	42	Ant 0	87.50	1.14	14.00	13.89	1.03	-0.18	0.472	0.55						
	WLAN5.2G	802.11ac VHT80	Left Side	5	42	Ant 0	87.50	1.14	14.00	13.89	1.03	-0.1	0.062	0.07						
	WLAN5.2G	802.11ac VHT80	Right Side	5	42	Ant 0	87.50	1.14	14.00	13.89	1.03	0.11	0.048	0.06						
	WLAN5.2G	802.11ac VHT80	Top Side	5	42	Ant 0	87.50	1.14	14.00	13.89	1.03	0	<0.001	0.00						
	WLAN5.2G	802.11ac VHT80	Bottom Side	5	42	Ant 0	87.50	1.14	14.00	13.89	1.03	0.02	0.656	0.77						
	WLAN5.8G	802.11ac VHT80	Front Face	5	155	Ant 0	87.50	1.14	16.00	15.32	1.17	0.05	0.295	0.39						
	WLAN5.8G	802.11ac VHT80	Rear Face	5	155	Ant 0	87.50	1.14	16.00	15.32	1.17	0.08	0.405	0.54						
	WLAN5.8G	802.11ac VHT80	Left Side	5	155	Ant 0	87.50	1.14	16.00	15.32	1.17	-0.15	0.281	0.37						
3	WLAN5.8G	802.11ac VHT80	Right Side	5	155	Ant 0	87.50	1.14	16.00	15.32	1.17	-0.02	0.06	0.08						
	WLAN5.8G	802.11ac VHT80	Top Side	5	155	Ant 0	87.50	1.14	16.00	15.32	1.17	0	<0.001	0.00						
	WLAN5.8G	802.11ac VHT80	Bottom Side	5	155	Ant 0	87.50	1.14	16.00	15.32	1.17	0.14	0.729	0.97						
	BT	BR / EDR	Front Face	5	78	Ant 0	76.74	1.30	4.00	3.99	1.00	0	<0.001	0.00						
	BT	BR / EDR	Rear Face	5	78	Ant 0	76.74	1.30	4.00	3.99	1.00	0	<0.001	0.00						
	BT	BR / EDR	Left Side	5	78	Ant 0	76.74	1.30	4.00	3.99	1.00	0	<0.001	0.00						
	BT	BR / EDR	Right Side	5	78	Ant 0	76.74	1.30	4.00	3.99	1.00	0	<0.001	0.00						
	BT	BR / EDR	Top Side	5	78	Ant 0	76.74	1.30	4.00	3.99	1.00	0	<0.001	0.00						
	BT	BR / EDR	Bottom Side	5	78	Ant 0	76.74	1.30	4.00	3.99	1.00	0	<0.001	0.00						
4	BT	BR / EDR	Rear Face	5	0	Ant 0	76.74	1.30	4.00	3.95	1.01	0	<0.001	0.00						
	BT	BR / EDR	Rear Face	5	39	Ant 0	76.74	1.30	4.00	3.92	1.02	0	<0.001	0.00						
	BT	BR / EDR	Rear Face	5	39	Ant 0	76.74	1.30	4.00	3.92	1.02	0	<0.001	0.00						