

System Performance Check-D2450V2-727

Frequency: 2450 MHz; Duty Cycle: 1:1; Room Ambient Temperature: 22.8°C; Liquid Temperature: 22.6°C
Medium parameters used: $f = 2450$ MHz; $\sigma = 1.791$ S/m; $\epsilon_r = 40.225$; $\rho = 1000$ kg/m³

DASY5 Configuration:

- Area Scan Setting: Find Secondary Maximum Within: 2.0 dB and with a peak SAR value greater than 0.0012W/kg
- Electronics: DAE4 Sn547; Calibrated: 2023/1/24
- Probe: EX3DV4 - SN3665; ConvF(7.35, 7.35, 7.35) @ 2450 MHz; Calibrated: 2023/8/18
- Sensor-Surface: 2mm (Mechanical Surface Detection)
- Phantom: ELI

Head/Pin=250mW/Area Scan (81x81x1): Interpolated grid: dx=1.200 mm, dy=1.200 mm
Maximum value of SAR (interpolated) = 19.0 W/kg

Head/Pin=250mW/Zoom Scan (7x7x7)/Cube 0: Measurement grid: dx=5mm, dy=5mm, dz=5mm

Reference Value = 103.1 V/m; Power Drift = 0.06 dB

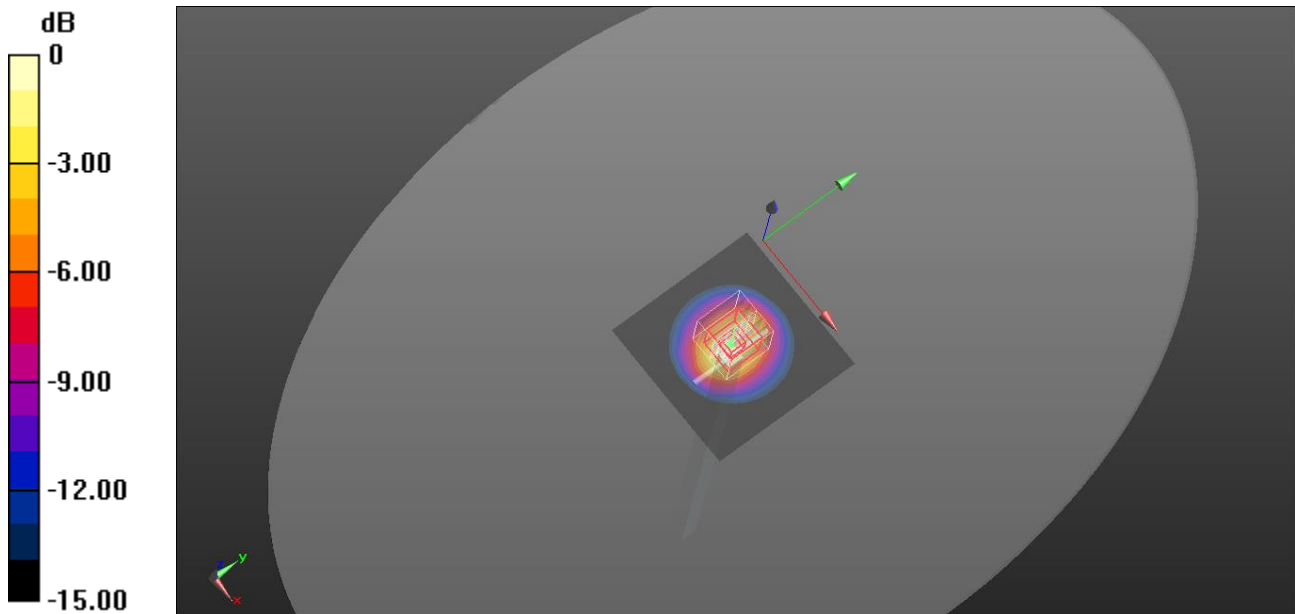
Peak SAR (extrapolated) = 25.4 W/kg

SAR(1 g) = 13 W/kg; SAR(10 g) = 6.56 W/kg

Smallest distance from peaks to all points 3 dB below = 11.4 mm

Ratio of SAR at M2 to SAR at M1 = 52%

Maximum value of SAR (measured) = 19.0 W/kg



0 dB = 19.0 W/kg = 12.79 dBW/kg

System Performance Check-D5GHzV2-1349-5250

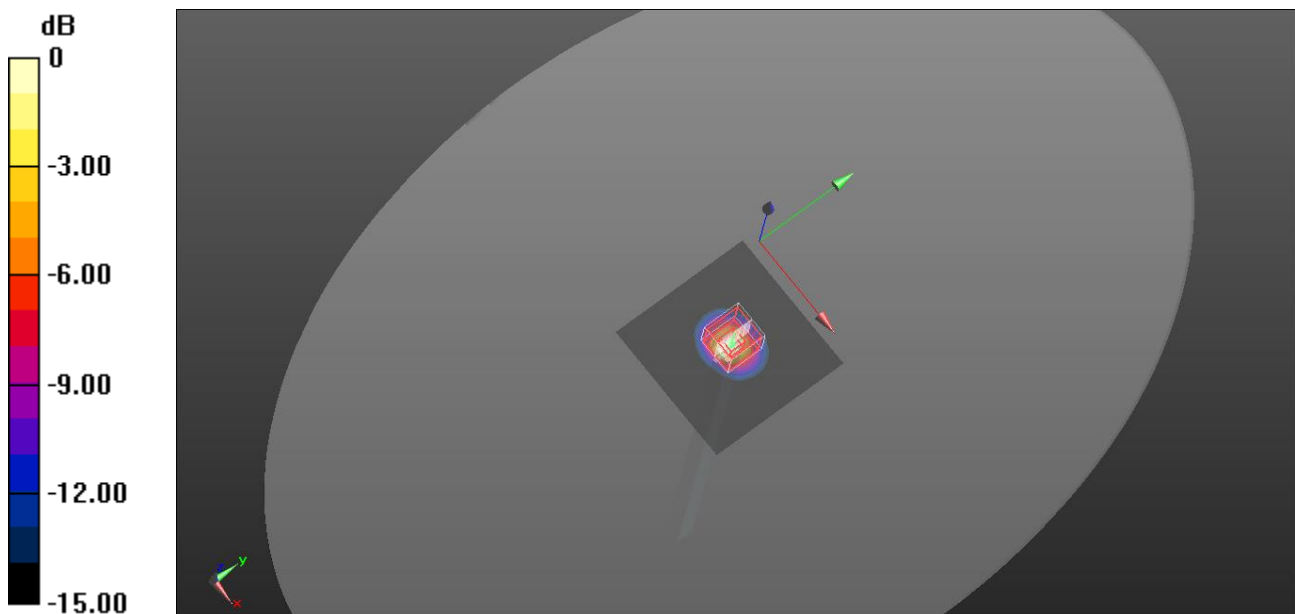
Frequency: 5250 MHz; Duty Cycle: 1:1; Room Ambient Temperature: 22.7°C; Liquid Temperature: 22.3°C
Medium parameters used: $f = 5250$ MHz; $\sigma = 4.605$ S/m; $\epsilon_r = 36.536$; $\rho = 1000$ kg/m³

DASY5 Configuration:

- Area Scan Setting: Find Secondary Maximum Within: 2.0 dB and with a peak SAR value greater than 0.0012W/kg
- Electronics: DAE4 Sn547; Calibrated: 2023/1/24
- Probe: EX3DV4 - SN3665; ConvF(5.44, 5.44, 5.44) @ 5250 MHz; Calibrated: 2023/8/18
- Sensor-Surface: 2mm (Mechanical Surface Detection)
- Phantom: ELI

Head/Pin=100mW/Area Scan (91x91x1): Interpolated grid: dx=1.000 mm, dy=1.000 mm
Maximum value of SAR (interpolated) = 16.0 W/kg

Head/Pin=100mW/Zoom Scan (7x7x12)/Cube 0: Measurement grid: dx=4mm, dy=4mm, dz=2mm
Reference Value = 67.60 V/m; Power Drift = 0.03 dB
Peak SAR (extrapolated) = 33.2 W/kg
SAR(1 g) = 8.38 W/kg; SAR(10 g) = 2.41 W/kg
Smallest distance from peaks to all points 3 dB below = 7.4 mm
Ratio of SAR at M2 to SAR at M1 = 56.3%
Maximum value of SAR (measured) = 17.2 W/kg



0 dB = 17.2 W/kg = 12.35 dBW/kg