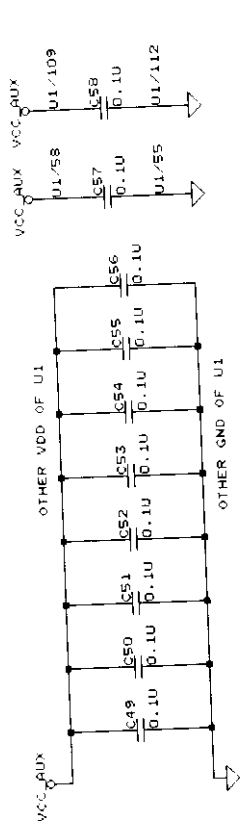
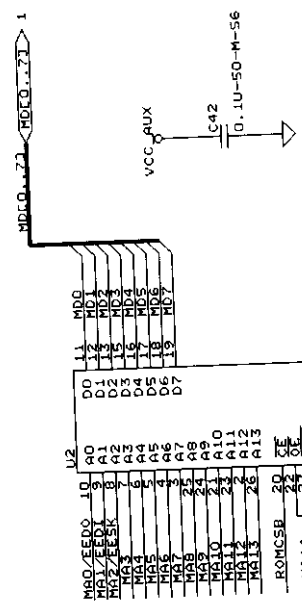


LINK SCH
SLOT 7 SCH

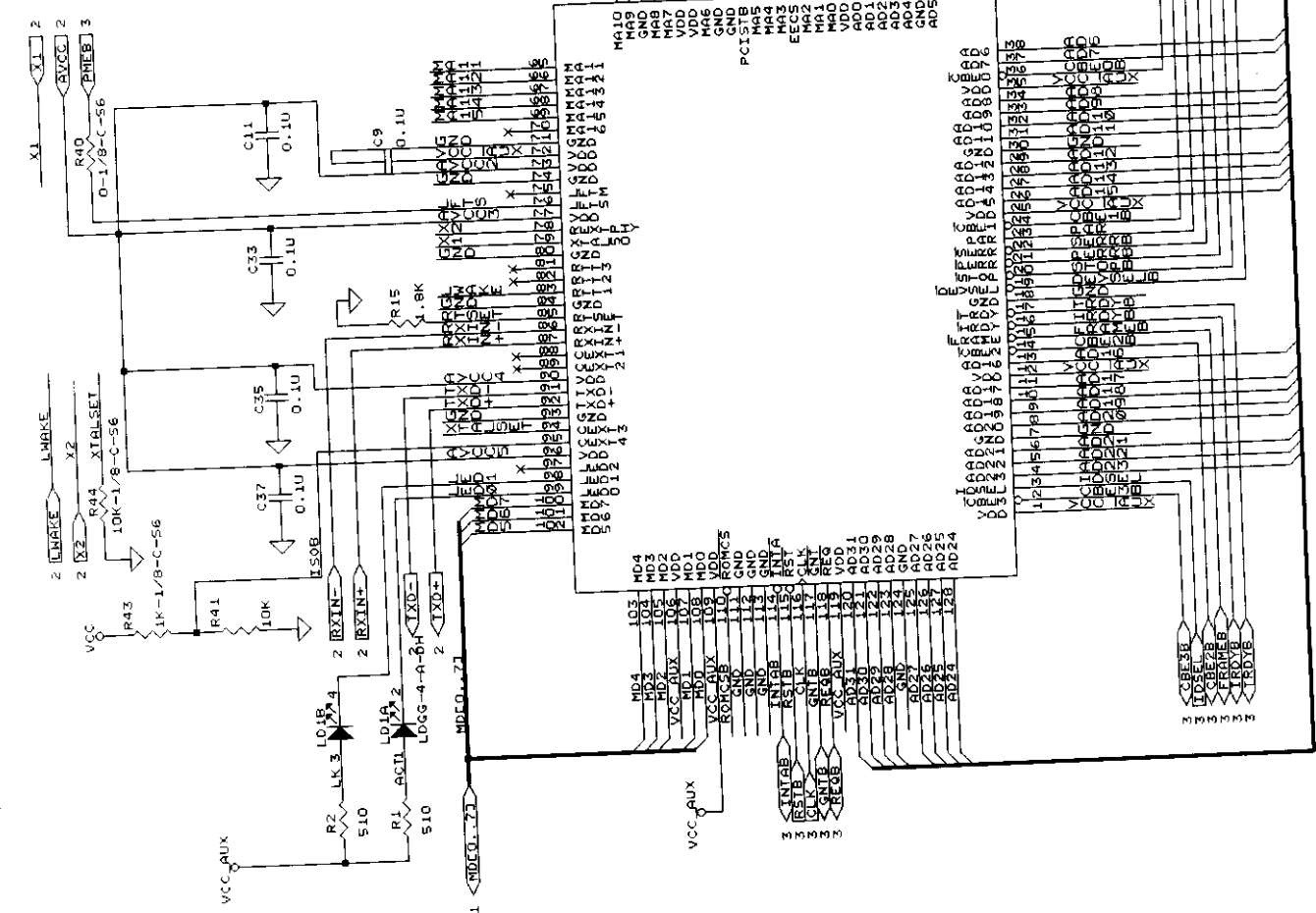
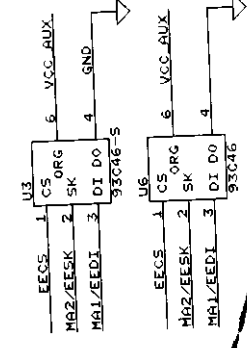
NOTE: Apply R44 to use 25MHz crystal as the clock source.
Otherwise, discard R44 to use 50MHz OSC as the clock source.



DE-COUPLE CAPS OF RTL8139B
MUST BE PLACED AS CLOSE TO CHIP
AS POSSIBLE. (INCLUDING C11, C33, C35, C37)

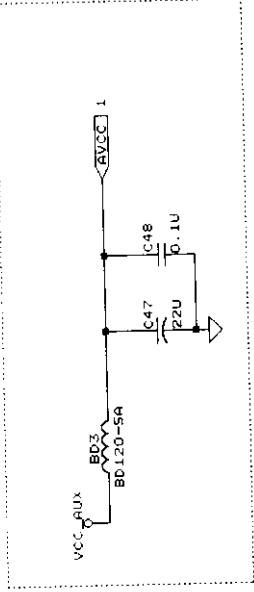


MA15 R4
10K-1/8-C-56

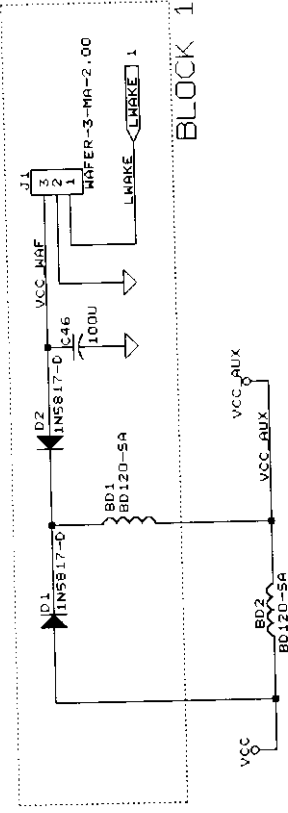


NOTE: 1. Without ACPI must be removed the BLOCK 1
, and connect B02

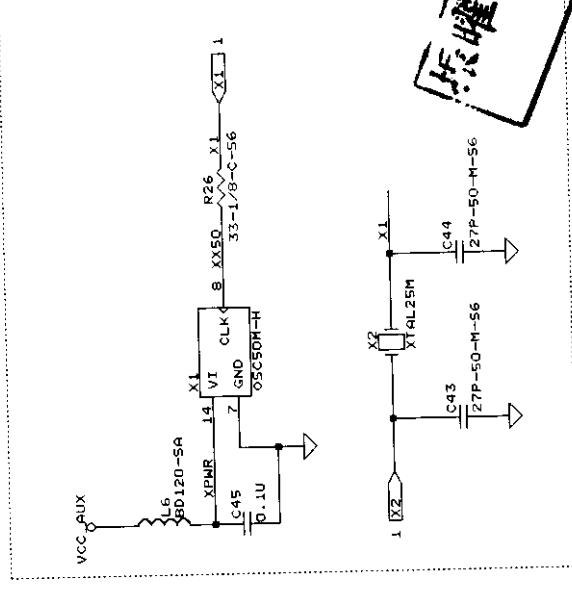
Analog power



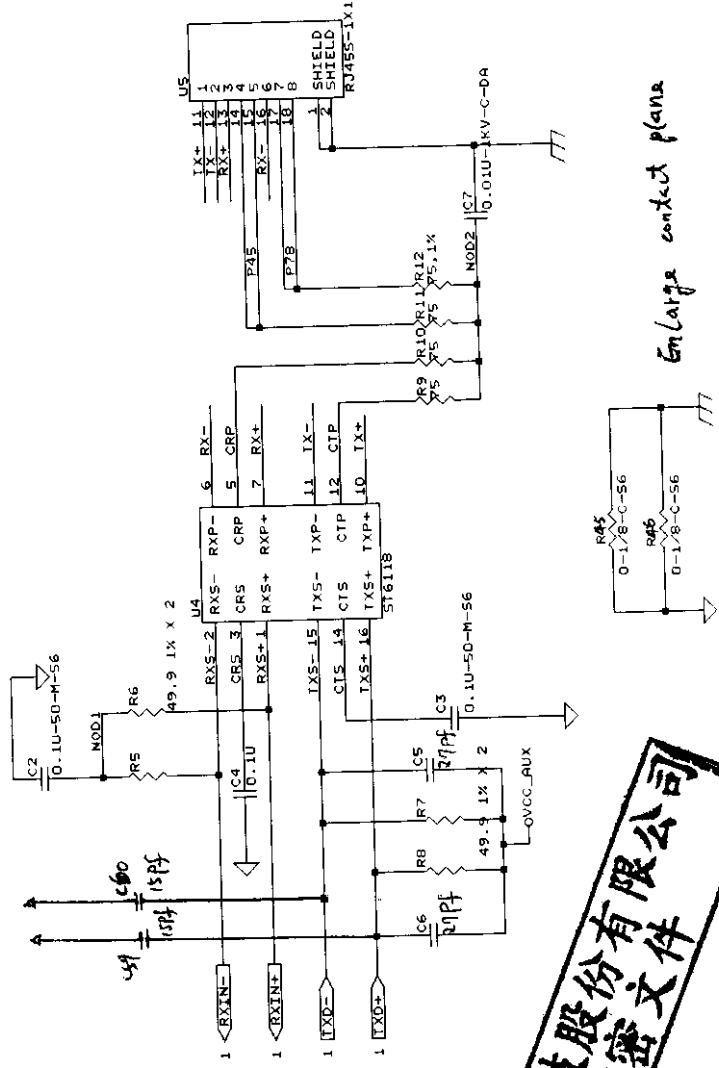
ACPI interface



BLOCK 1



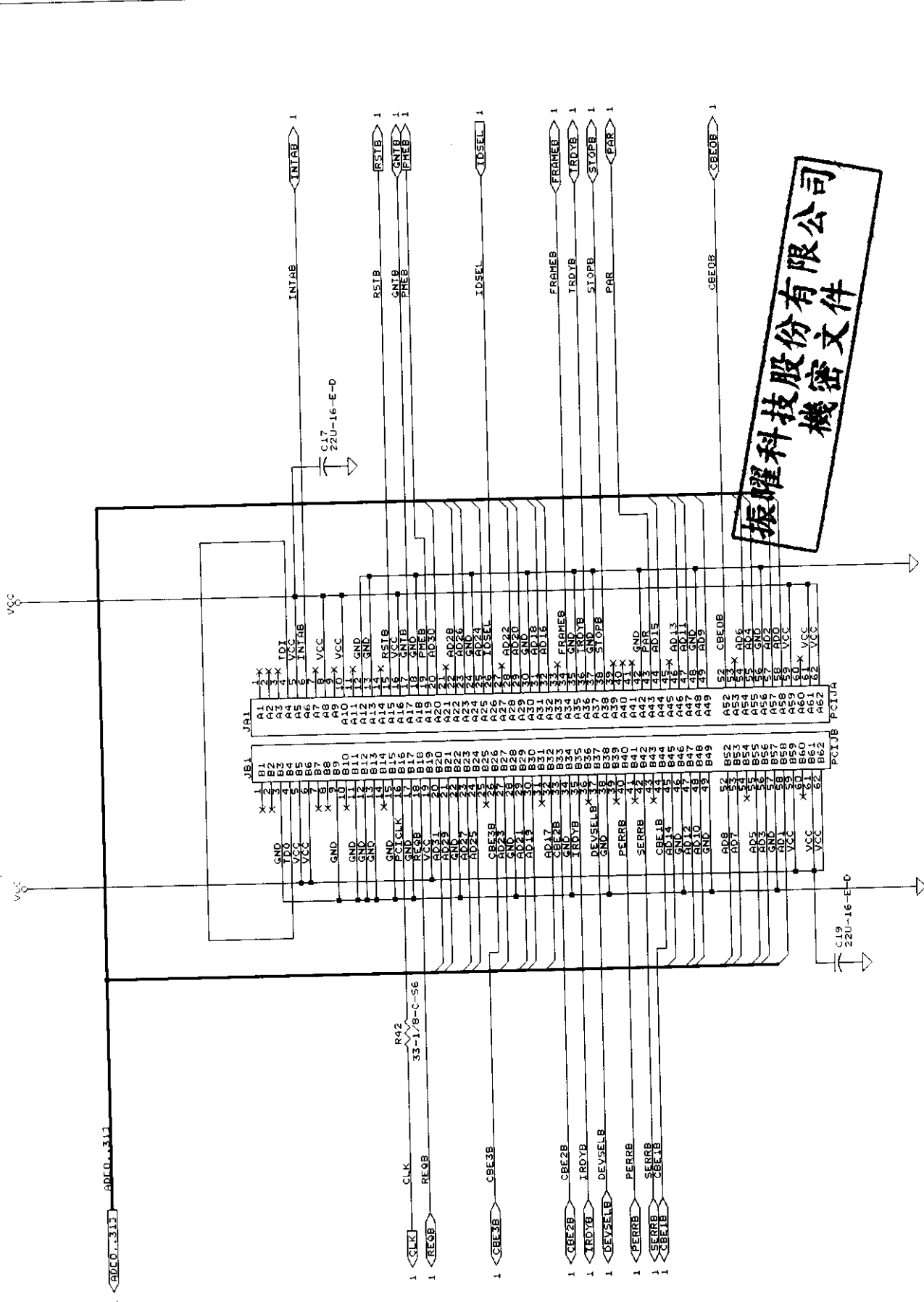
OSC OR XTAL SELECT



Enlarge contact plane



Title	NETRONIX INC.
Size	SIP.SCH
Document Number	EA1215 (81396)
REV	B
Date	April 26, 1999
Sheet	2 of 3



振曜科技股份有限公司
 機密文件

1 <ADCO...313> ADCO...313

1 <CLK> CLK
 1 <REQB> REQB

1 <CBE1B> CBE1B

1 <CBE2B> CBE2B
 1 <TRDYB> TRDYB
 1 <DEVSELB> DEVSELB
 1 <PERRB> PERRB
 1 <SERRB> SERRB
 1 <CBE1B> CBE1B

1 <CBE0B> CBE0B

C19 220-16-E-D