

Wireless 802.11g AP

User's Manual

FCC Certifications



Federal Communication Commission Interference Statement

This equipment has been tested and found to comply with the limits for a Class B digital device, pursuant to Part 15 of the FCC Rules. These limits are designed to provide reasonable protection against harmful interference in a residential installation. This equipment generates, uses and can radiate radio frequency energy and, if not installed and used in accordance with the instructions, may cause harmful interference to radio communications. However, there is no guarantee that interference will not occur in a particular installation. If this equipment does cause harmful interference to radio or television reception, which can be determined by turning the equipment off and on, the user is encouraged to try to correct the interference by one of the following measures:

- Reorient or relocate the receiving antenna.
- Increase the separation between the equipment and receiver.
- Connect the equipment into an outlet on a circuit different from that to which the receiver is connected.
- Consult the dealer or an experienced radio/TV technician for help.

This device complies with Part 15 of the FCC Rules. Operation is subject to the following two conditions: (1) This device may not cause harmful interference, and (2) this device must accept any interference received, including interference that may cause undesired operation.

FCC Caution: Any changes or modifications not expressly approved by the party responsible for compliance could void the user's authority to operate this equipment.

IMPORTANT NOTE:

FCC Radiation Exposure Statement:

This equipment complies with FCC radiation exposure limits set forth for an uncontrolled environment. This equipment should be installed and operated with minimum distance 20cm between the radiator & your body. This transmitter must not be co-located or operating in conjunction with any other antenna or transmitter.

IEEE 802.11b or 802.11g operation of this product in the U.S.A. is firmware-limited to channels 1 through 11.

CE Mark Warning



This equipment complies with the requirements relating to electromagnetic compatibility, EN 55022 class B for ITE, the essential protection requirement of Council Directive 89/336/EEC on the approximation of the laws of the Member States relating to electromagnetic compatibility.

Company has an on-going policy of upgrading its products and it may be possible that information in this document is not up-to-date. Please check with your local distributors for the latest information. No part of this document can be copied or reproduced in any form without written consent from the company.

Trademarks:

All trade names and trademarks are the properties of their respective companies.

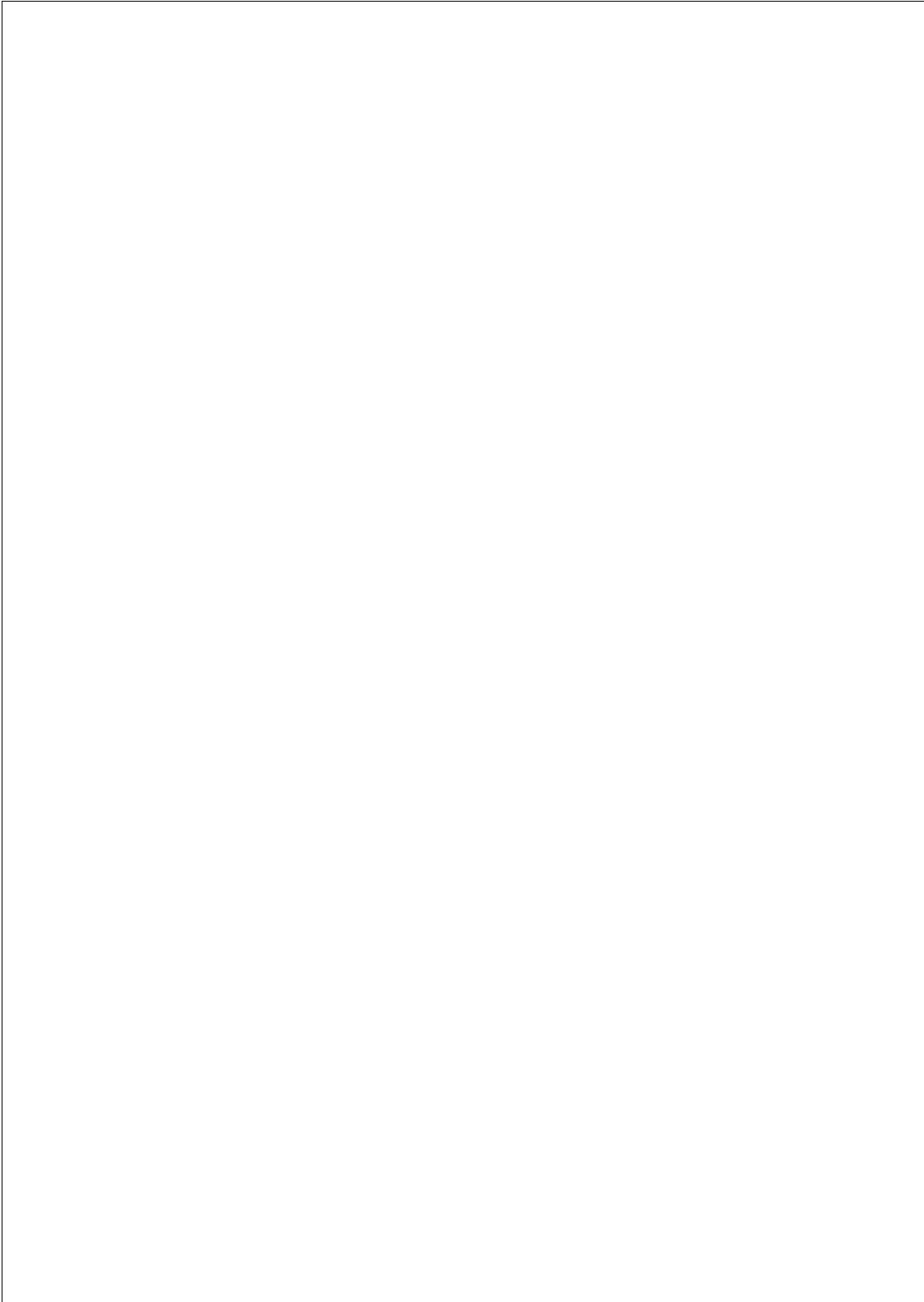
Copyright © 2006, All Rights Reserved.

經型式認證合格之低功率射頻電機，非經許可，公司、商號或使用者均不得擅自變更頻率、加大功率或變更原設計之特性及功能。

低功率射頻電機之使用不得影響飛航安全及干擾合法通信；經發現有干擾現象時，應立即停用，並改善至無干擾時方得繼續使用。前項合法通信，指依電信法規定作業之無線電通信。低功率射頻電機須忍受合法通信或工業、科學及醫療用電波輻射性電機設備之干擾。

Table of Contents

| | |
|---|-------------|
| Unpacking Information | 1 |
| Introduction | 2 |
| General Description | 2 |
| Key Features | 2 |
| The Front Panel | 3 |
| The Rear Panel | 4 |
| Connecting This AP to Your Network. | 5 |
| Management | 6 |
| Configuring the IP address of your computer | 6 |
| Starting the WEB-Based Management Interface | 8 |
| Status | 10 |
| Items | 10 |
| Information | 10 |
| LAN Interface Setup | 11 |
| System Log | 12 |
| Password Setup | 13 |
| Basic Settings | 14 |
| Advanced Settings | 17 |
| Security | 19 |
| WEP Encryption | 19 |
| WPA Encryption | 20 |
| WPA2 Encryption | 21 |
| WPA2 Mixed Encryption | 22 |
| Access Control | 23 |
| Statistics | 24 |
| Upgrade Firmware | 25 |
| Save and Reload Settings | 26 |
| Log out | 26 |
| Product Specifications | 錯誤! 尙未定義書籤。 |



Unpacking Information

Thank you for purchasing the product. Before you start, please check all the contents of this package.

The product package should include the following:

1. **One Wireless AP**
2. **One power adapter**
3. **One Quick installation Guide**
4. **One User Manual (CD)**
5. **One detachable antenna**

Introduction

General Description

Easily constructing your LAN, this wireless access point offers a wireless interface and eliminates your effort busying cabling form one computer to another.

With being compliant to IEEE 802.11g specification, this wireless access point supports data rate up to 54Mbps and hence help to construct your high-speed home or office wireless network. 802.11g is also backward compatible with IEEE 802.11b wireless devices.

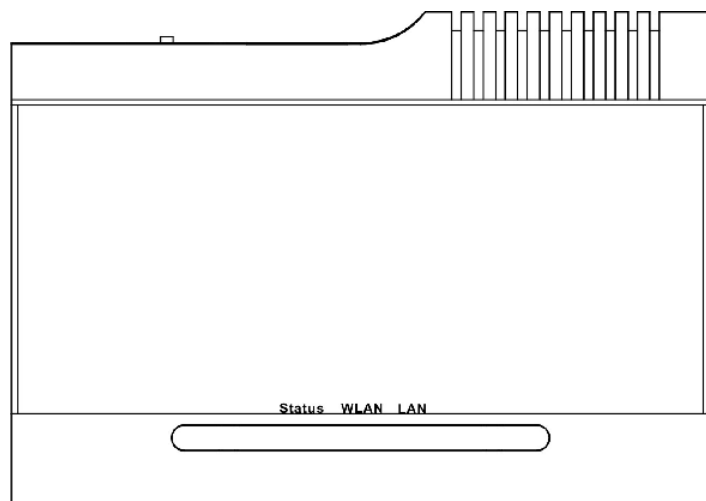
This access point equips one LAN port and one embedding antenna. With supporting DHCP server and client, the W430 is easy to install and setup. The wireless security mechanism is provided over 64/128-bit WEP, WPA (TKIP with IEEE 802.1x), WPA2 and AES.

This device supports WEB-based graphics user interface that helps users to configure this device easily.

Key Features

- n Complies with IEEE 802.11b/g wireless standards
- n Provides one 802.11b/g wireless Reverse SMA detachable antenna
- n High speed transfer data rate up to 54Mbps
- n Supports turbo mode for 72Mbps data transfer
- n Supports wireless data encryption with 64/128-bit WEP, WPA (TKIP with IEEE 802.1x), WPA2 and AES functions
- n Supports one switch for selecting AP client mode or AP mode
- n Supports Ad Hoc mode, Infrastructure mode, AP Bridge mode, AP Bridge WDS mode and Repeater mode
- n Supports authentication for wireless connectivity based on ESSID
- n Provides MAC access control and hidden SSID function
- n WDS supported with WEP, TKIP and AES encryption
- n Supports DHCP server
- n Supports firmware upgrade function via Web
- n Compliant with FCC Part 15.247 for US, ETS 300 328 for Europe
- n Flash: 2MB, SDRAM : 8MB
- n Certifications: FCC Class B, CE Mark

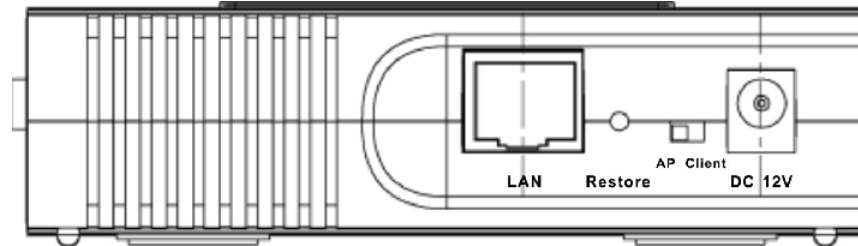
The Front Panel



LED definition

| LED | Status | Definition |
|--------|---------------|---|
| Status | Steady Blue | System down or System restarting |
| | Blinking Blue | System works normally. |
| | Off | System down |
| WALN | Blinking Blue | Wireless interface enabled |
| | Off | Wireless interface disabled |
| LAN | Blinking Blue | Data transmitting/receiving on LAN port |
| | Steady Blue | Valid connection on LAN port |
| | Off | Invalid connection on LAN port |

The Rear Panel



| | |
|-------------------------|--|
| DC 12V | Plug this connector with the circle end of the included power adapter. Plug the adapter to an outlet to power on the AP. |
| AP/Client switch | Push this switch to either side to function this AP in AP mode or Client mode. |
| Restore | Press and hold this button for 5 seconds to restore the default values. |
| LAN | The RJ-45 port for connect this AP to your LAN. |

Connecting This AP to Your Network.

This Chapter provides a step-by-step guide to the installation and configuration of this wireless access point.

- Ø Connect the power adapter with the connector end to the power connector in the rear panel of the device and the plug end to an appropriate outlet.

- Ø Connect the LAN port with RJ-45 cable to:
 1. a broad band router to allow wireless clients to connect to WAN.
 2. a switch to allow wireless clients to communicate with wired LAN.
 3. a computer directly to use the computer configuring this AP.

Note: You have to configure the network settings of this AP to be communicable with your router, switch or computer first. To change the default network settings of the AP, please refer to “LAN Interface setup”.

Management

Configuring the IP address of your computer

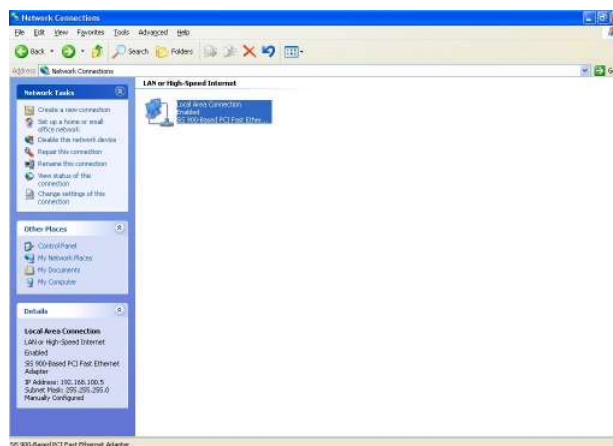
In order to manage with this Wireless AP, you have to configure the IP addresses of your computer to be compatible with this device.

Note:

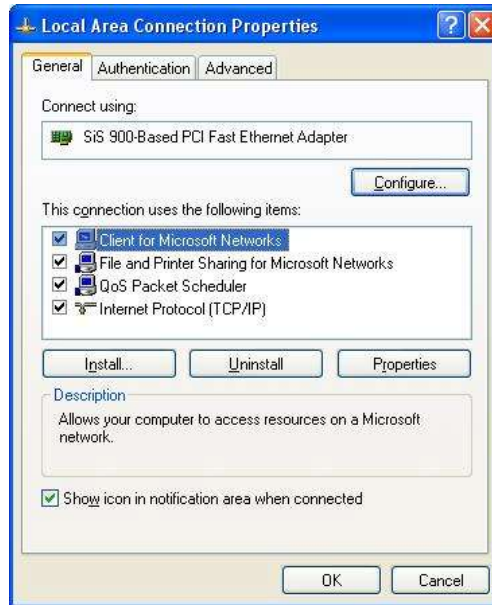
1. The default network setting of the device:
IP address: 192.168.1.1
Subnet Mask: 255.255.255.0
Default Gateway: 192.168.1.254
2. In the following TCP/IP configuration guide, the IP address "192.168.1.2 " is assumed to be your IP address. Please **DO NOT** choose 192.168.1.1 for the IP address (192.168.1.1) has been set as the default IP for this device.
3. The following TCP/IP configuration guide uses windows XP as the presumed operation system.

Procedures to configure IP addresses for your computer

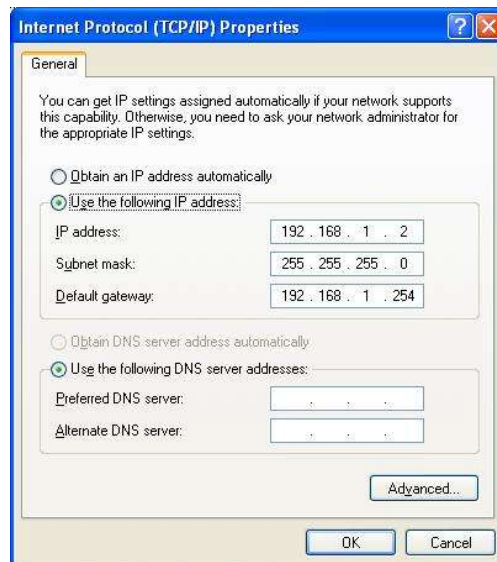
1. If you are in Classic Start menu view, click **StartàSettingsàControl PanelàNetwork Connections**.
If you are in Start menu view, click **StartàControl Panelà Network Connections**.
2. Double click "Local Area Connection"



3. Choose Internet Protocol (TCP/IP) and click Properties.



4. Choose "Use the following IP address" to specify IP addresses manually. Fill in the IP addresses in each column. Please click the OK button after your configuration.



Starting the WEB-Based Management Interface

The device uses WEB as the management interface. You can use a browser to access the management interface easily. Please follow up the steps listed below.

1. Double click the Internet WEB browser icon on your desktop screen (Netscape Communicator 4.0 and Internet Explorer 3.0 or update version)
2. Type 192.168.1.1 into the URL WEB address location and press Enter.



3. The Username and Password Required window appears.
 - Enter **admin** in the User Name location (default value).
 - Enter **admin** in the Password location (default value).
 - Click "OK" button



The Graphic User Interface

After the password authorization, the Setup Wizard shows up as the home page of the Graphic User interface. You may click on each folder on left column of each page to get access to each configuration page.

The screenshot displays the web interface for an 802.11g Wireless AP. The title bar at the top reads "802.11g Wireless AP". On the left side, there is a navigation menu with the following items: Site contents, Status, System Management, Basic Settings, Advanced Settings, Security, Access Control, Statistics, Upgrade Firmware, and Save/Reload Settings. The main content area is titled "Status" and includes a sub-header "Status" in yellow. Below this, a text box states: "This page shows the current status and some basic settings of the device." The status information is presented in a table with three sections: SYSTEM, Wireless Configuration, and LAN Configuration.

| SYSTEM | |
|------------------|----------------|
| Uptime | 0day 0h 3m 57s |
| Firmware Version | v1.0 |

| Wireless Configuration | |
|------------------------|-------------------|
| Mode | AP |
| Band | 2.4 GHz (B+G) |
| SSID | WLAN-11g-AP |
| Channel Number | 1 |
| Encryption | Disabled |
| BSSID | 00:00:7d:c0:e7:d1 |
| Associated Clients | 0 |

| LAN Configuration | |
|--------------------|-------------------|
| Attain IP Protocol | Static IP |
| IP Address | 10.10.99.222 |
| Subnet Mask | 255.255.0.0 |
| Default Gateway | 10.10.99.254 |
| MAC Address | 00:00:7d:c0:e7:d1 |

Status

The Status page shows the following information of the device.

| Items | Information |
|--------------------|--|
| Uptime | The period that you turn the device on. |
| Firmware version | The current firmware version of the device. |
| Mode | Shows if the device is operating in AP or WDS mode. |
| Band | The band that the wireless AP operating. |
| SSID | The name of this wireless network. |
| Channel Number | The channel that the wireless network using. |
| Encryption | The security encryption type that the wireless network using. |
| BSSID | The Basic Service Set Identity of this AP(This parameter is the same as the MAC address of LAN port) |
| Associated Clients | The number of members who is currently connected with this AP. |
| Attain IP Protocol | The way for this AP to get a IP address. |
| IP Address | The current IP address of this AP. |
| Subnet Mask | The current subnet mask of this AP. |
| Default Gateway | The current default gateway of this AP. |
| MAC Address | The current MAC address of this AP. |

Status

This page shows the current status and some basic settings of the device.

| SYSTEM | |
|------------------------|-----------------------------|
| Uptime | 0day:0h:12m:25s |
| Firmware Version | v1.0 |
| Wireless Configuration | |
| Mode | AP+WDS |
| Band | 2.4 GHz (B+G) |
| SSID | WLAN-11g-AP |
| Channel Number | 1 |
| Encryption | Disabled(AP), Disabled(WDS) |
| BSSID | 00:e0:7d:c0:c7:d1 |
| Associated Clients | 0 |
| LAN Configuration | |
| Attain IP Protocol | Static IP |
| IP Address | 10.10.99.146 |
| Subnet Mask | 255.255.255.0 |
| Default Gateway | 10.10.99.254 |
| MAC Address | 00:e0:7d:c0:c7:d1 |

LAN Interface Setup

This page allows users to configure the LAN network settings.

LAN Interface Setup

This page is used to configure the parameters for local area network which connects to the LAN port of your Access Point. Here you may change the setting for IP address, subnet mask, DHCP, etc..

| | |
|-----------------------|---|
| IP Address: | <input style="width: 90%;" type="text" value="192.168.1.1"/> |
| Subnet Mask: | <input style="width: 90%;" type="text" value="255.255.255.0"/> |
| Default Gateway: | <input style="width: 90%;" type="text" value="192.168.1.254"/> |
| DHCP Server: | <input style="width: 90%;" type="text" value="Disabled"/> |
| DHCP Client Range: | <input style="width: 45%;" type="text" value="192.168.1.100"/> - <input style="width: 45%;" type="text" value="192.168.1.200"/> <input style="margin-left: 10px;" type="button" value="Show Client"/> |
| DNS Server: | <input style="width: 90%;" type="text"/> |
| Domain Name: | <input style="width: 90%;" type="text"/> |
| 802.1d Spanning Tree: | <input style="width: 90%;" type="text" value="Disabled"/> |
| Clone MAC Address: | <input style="width: 90%;" type="text" value="000000000000"/> |

Configuration

| | |
|-----------------------------|---|
| IP address | The IP of your AP LAN port (Default 192.168.1.1) |
| Subnet Mask | Subnet Mask of you LAN (Default 255.255.255.0) |
| Default Gateway | The default gateway of this AP. |
| DHCP Server | Select "Enable" to enable the DHCP server. |
| DHCP Client Range | Specify the DHCP Client IP address range. You can also click the "Show Client" button to list those connected DHCP clients. |
| DNS Server | The DNS (domain name server) of this AP. |
| Domain Name | The name that the AP is going to be recognized in LAN. |
| 802.1d Spanning tree | To prevent from network loops and preserve the quality of bridged network |
| Clone MAC Address | MAC cloning feature allows the MAC address reported by WAN side network interface card to be set to the MAC address already registered with the ISP eliminating the need to register the new MAC address with the ISP. This feature does not change the actual MAC address on the NIC, but instead changes the MAC address reported by this device to client requests. To Change the MAC address, enter it in the text box. |

System Log

This System Log page shows the information of the current activities on the AP.

To enable system log function:

1. Mark the "Enable Log" checkbox.
2. To see all information of the system, select the "system all" checkbox.
To see wireless information only, select the "wireless" checkbox.
To send the log information to a certain note, select the "Enable Remote Log" checkbox and fill in the IP address in the "Log Server IP Address" box.
3. Click the "Apply Changes" button to activate

You could also click the "Refresh" button to refresh the log information or click the "clear" button to clean the log table.

The screenshot shows a web interface titled "System Log". At the top, there is a yellow header "System Log" and a subtitle "This page can be used to set remote log server and show the system log." Below this, there are several configuration options: a checkbox for "Enable Log", two sub-checkboxes for "system all" and "wireless", and a checkbox for "Enable Remote Log". To the right of the "Enable Remote Log" checkbox is a text input field for "Log Server IP Address:" and a label "Server Port: 514". Below these options is a button labeled "Apply Changes". At the bottom of the page, there are two buttons: "Refresh" and "Clear". A large, empty rectangular area with a vertical scrollbar is positioned between the "Apply Changes" button and the "Refresh" and "Clear" buttons, intended for displaying log entries.

Password Setup

This page allows users to configure the username and password for getting accessed to this WEB based user interface.

To change the username/password, please fill in the username, New password and click the "Apply Changes" button after confirming the password. You may also cancel the password authentication by leaving those blanks empty then clicking the "Apply Changes" button.

Password Setup

This page is used to set the account to access the web server of Access Point. Empty user name and password will disable the protection.

User Name:

New Password:

Confirmed Password:

Basic Settings

This page provides setting up the wireless configuration and monitoring the Wireless Clients that associate with this AP.

Wireless Basic Settings

This page is used to configure the parameters for wireless LAN clients which may connect to your Access Point. Here you may change wireless encryption settings as well as wireless network parameters.

Disable Wireless LAN Interface

Band:

AP Mode Type:

SSID:

Country:

Channel Number:

Associated Clients:

WDS Setting:

Enable Universal Repeater Mode (Acting as AP and client simultaneously)

Root AP SSID:

Configuration

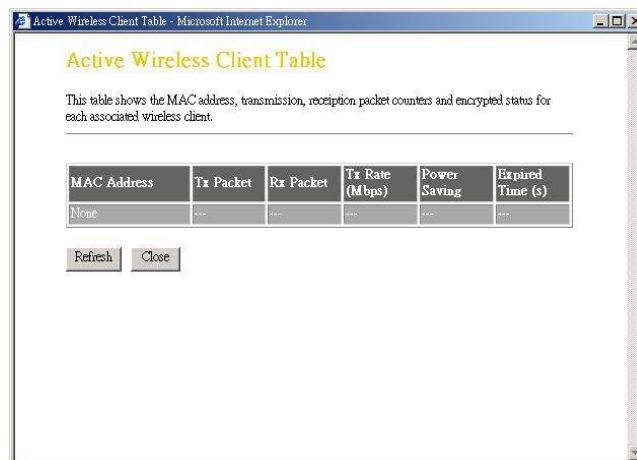
| | |
|---------------------------------------|---|
| Disable Wireless LAN Interface | Wireless To Disable interface of Wireless LAN |
| Band | To select a band for this device to match 802.11b, 802.11g or both. |
| AP Mode Type | Configure this device as AP, WDS or both. |
| SSID | The name of the wireless network |
| Country | Select the region you live. |
| Channel Number | The channel used by the wireless LAN. All devices in the same wireless LAN should use the same channel. |
| Associated Clients | Click the "Show Active Clients" button, then an "Active Wireless Client Table" will pop up. You can see the status of all active wireless stations that are connecting to the access point. |

| | |
|---------------------------------------|---|
| WDS Setting | Click the "Show WDS Setting" button to configure WDS settings. The WDS settings pops up. |
| Enable Universal Repeater Mode | Mark this checkbox to enable Universal Repeater Mode which acts this device as an AP and client simultaneously. |
| Root AP SSID | While you enable the Universal Repeater Mode, you have to specify an SSID for the extended interface. |

Click <Apply changes> button at the bottom of the screen to save the above configurations. You can now configure other advance sections or start using the AP (with the advance settings in place)

Active Wireless Client Table

This is the window that pops up after clicking the "Show Active Clients" button.



| | |
|---------------------|---|
| MAC Address | MAC address of this active wireless station. |
| Tx Packet | The number of transmitted packets that are sent out from this active wireless station. |
| Rx Packet | The number of received packets that are received by this active wireless station. |
| TX Rate | The transmission rate |
| Power Saving | Shows if the wireless client is in Power Saving mode |
| Expired Time | This is the time in second before dissociation. If the wireless keeps idle longer than the expired time, this wireless AP will dissociate it. The wireless client station has to associate again when it is active. |

| | |
|---------|---|
| Refresh | Refresh the "Active Wireless Client Table". |
| Close | Close the "Active Wireless Client Table". |

WDS Settings

This is the window that pops up after clicking the "Show WDS Setting" button.

WDS Settings

Wireless Distribution System uses wireless media to communicate with other APs, like the Ethernet does. To do this, you must set these APs in the same channel and set MAC address of other APs which you want to communicate with in the table and then enable the WDS.

Enable WDS

Add WDS AP: MAC Address

Comment

Apply Changes Reset Set Security Show Statistics

Current WDS AP List:

| MAC Address | Comment | Select |
|-------------|---------|--------|
| | | |

Delete Selected Delete All Reset

Wireless Distribution System allows this AP to communicate with other APs wirelessly. To make it work, you must ensure that these APs are in the same Channel and add these APs MAC Address and Comment values into the WDS list. Don't Forget to Enable the WDS by click the check box of "Enable WDS" and press "Apply Changes" button to save. To Delete the AP on the list, Click the check box in the select item and click the "Delete Selected". If you want to delete all APs on the list, click "Delete All" to remove all of them.

Advanced Settings

You can set advanced wireless LAN parameters of this AP. The parameters include Authentication Type, Fragment Threshold, RTS Threshold, Beacon Interval, Data Rate, Preamble Type, Broadcast SSID, IAPP and 802.11g Protection.

Wireless Advanced Settings

These settings are only for more technically advanced users who have a sufficient knowledge about wireless LAN. These settings should not be changed unless you know what effect the changes will have on your Access Point.

Authentication Type: Open System Shared Key Auto

Fragment Threshold: (256-2346)

RTS Threshold: (0-2347)

Beacon Interval: (20-1024 ms)

Data Rate: ▾

Preamble Type: Long Preamble Short Preamble

Broadcast SSID: Enabled Disabled

IAPP: Enabled Disabled

802.11g Protection: Enabled Disabled

RF Output Power: 100% 50% 25% 10% 5%

Turbo Mode: Auto Always Off

Configuration

| | | |
|----------------------------|---|---|
| Authentication Type | Open System mode | Allow communication with no security. |
| | Shared Key mode | Allow communication with devices with the same WEP key only. |
| | Auto | The wireless client can associate with this AP by using any one of these two Modes. |
| Fragment Threshold | To specifies the maximum size of packet during the data transition. The lower values you set, the worst performance it will be. | |

| | |
|---------------------------|---|
| RTS Threshold | If the packet size is smaller the RTS threshold, the AP will not send this packet by using the RTS/CTS mechanism. |
| Beacon Interval | The period of time how long a beacon is broadcasted. |
| Data Rate | The "Data Rate" is the data packets limitation this wireless AP can transmit. The wireless AP will use the highest possible selected transmission rate to transmit the data packets. |
| Preamble Type | It defines the length of CRC block in the frames during the wireless communication. "Short Preamble" is suitable for heavy traffic wireless network. "Long Preamble" provides much communication reliability |
| Broadcast SSID | If you enable "Broadcast SSID", every wireless station located within the coverage of this wireless AP can discover this wireless AP easily. If you are building a public wireless network, enabling this feature is recommended. Disabling "Broadcast SSID" can provide better security. |
| IAPP | To enables multiple AP to communicate and pass information regarding the location of associated Stations. |
| 802.11g Protection | Some 802.11g wireless adapters support 802.11g protection, which allows the adapters searches for 802.11g singles only. Select the "Disabled" to disable supporting 802.11g protection or select "enable" to support this function. |
| RF Output power | Select the RF (Radio Frequency) power. The RF output power has positive correlation with signal strength. |
| Turbo Mode | Some of our wireless adapters supports turbo mode, which provides a better connection quality. Select "Always" to support turbo mode or select "off" to turn it off . Select "Auto" turns it on or off automatically. |

Click the <Apply Changes> button at the bottom of the screen to save the above configurations. You can now configure other advance sections or start using the AP.

Security

At the page, you can set up the WEP, WPA Encryption to ensure the security of your Wireless. You will have to do different configurations to each encryption modes. Click on the Encryption drop list to select an encryption mode or select "Disabled" to transmitting data without encryption.

WEP Encryption

Wireless Security Setup

This page allows you setup the wireless security. Turn on WEP or WPA by using Encryption Keys could prevent any unauthorized access to your wireless network.

Encryption:

Key Length:

Key Format:

Default Tx Key:

Encryption Key 1:

Encryption Key 2:

Encryption Key 3:

Encryption Key 4:

Use 802.1x Authentication

Configuration

| | |
|----------------------------------|---|
| Encryption | To enable WEP, WPA, WPA2 and WPA2 Mixed encryption modes, select the option in the drop list. If you select none, any data will be transmitted without Encryption and any station can access the AP |
| Key Length | Select a key length as 64-bit or 128-bit. |
| Key Format | Select a key format as Hex or ASCII |
| Default Tx Key | Select a default key for transmitting data. |
| Use 802.1x Authentication | Mark this check box. Fill in the RADIUS server IP address, Port Number, and Password to enable 802.1x authentication. |

Click **<Apply Change>** at the bottom of the screen to save the above configurations. You can now configure other advance sections or start using the AP.

WPA Encryption

Wireless Security Setup

This page allows you setup the wireless security. Turn on WEP or WPA by using Encryption Keys could prevent any unauthorized access to your wireless network.

Encryption:

WPA Cipher Suite: TKIP AES

WPA Authentication Mode: Enterprise (RADIUS) Personal (Pre-Shared Key)

Pre-Shared Key Format:

Pre-Shared Key:

Configuration

| | |
|--------------------------------|--|
| Encryption | To enable WEP, WPA, WPA2 and WPA2 Mixed encryption modes, select the option in the drop list. If you select none, any data will be transmitted without Encryption and any station can access the AP. |
| WPA Cipher Suite | Select the WPA Cipher Suite to be TKIP or AES |
| WPA Authentication Mode | Select the WPA mode as "Enterprise (WPA-Radius)" or "Personal (Pre-Shared Key)". |
| Pre-Shared key Format | Click on the drop list to select an Pre-Shared Key Format as Passphrase or Hex |
| Pre-shared Key | Enter the Pre-shared Key according to the pre-shared key format you select. |

Click <Apply Change> at the bottom of the screen to save the above configurations. You can now configure other advance sections or start using the AP.

WPA2 Encryption

Wireless Security Setup

This page allows you setup the wireless security. Turn on WEP or WPA by using Encryption Keys could prevent any unauthorized access to your wireless network.

Encryption:

WPA2 Cipher Suite: TKIP AES

WPA Authentication Mode: Enterprise (RADIUS) Personal (Pre-Shared Key)

Pre-Shared Key Format:

Pre-Shared Key:

Configuration

| | |
|--------------------------------|--|
| Encryption | To enable WEP, WPA, WPA2 and WPA2 Mixed encryption modes, select the option in the drop list. If you select none, any data will be transmitted without Encryption and any station can access the AP. |
| WPA2 Cipher Suite | Select the WPA2 Cipher Suite to be TKIP or AES |
| WPA Authentication Mode | Select the WPA mode as "Enterprise (WPA-Radius)" or "Personal (Pre-Shared Key)". |
| Pre-Shared key Format | Click on the drop list to select an Pre-Shared Key Format as Passphrase or Hex |
| Pre-shared Key | Enter the Pre-shared Key according to the pre-shared key format you select. |

Click <Apply Change> at the bottom of the screen to save the above configurations. You can now configure other advance sections or start using the AP.

WPA2 Mixed Encryption

Wireless Security Setup

This page allows you setup the wireless security. Turn on WEP or WPA by using Encryption Keys could prevent any unauthorized access to your wireless network.

| | |
|---|--|
| Encryption: | <input type="text" value="WPA2 Mixed"/> |
| WPA Cipher Suite: | <input checked="" type="radio"/> TKIP <input type="radio"/> AES |
| WPA2 Cipher Suite: | <input type="radio"/> TKIP <input checked="" type="radio"/> AES |
| WPA Authentication Mode: | <input type="radio"/> Enterprise (RADIUS) <input checked="" type="radio"/> Personal (Pre-Shared Key) |
| Pre-Shared Key Format: | <input type="text" value="Passphrase"/> |
| Pre-Shared Key: | <input type="text"/> |
| <input type="button" value="Apply Changes"/> <input type="button" value="Reset"/> | |

Configuration

| | |
|--------------------------------|--|
| Encryption | To enable WEP, WPA, WPA2 and WPA2 Mixed encryption modes, select the option in the drop list. If you select none, any data will be transmitted without Encryption and any station can access the AP. |
| WPA Cipher Suite | Select the WPA Cipher Suite to be TKIP or AES |
| WPA2 Cipher Suite | Select the WPA2 Cipher Suite to be TKIP or AES |
| WPA Authentication Mode | Select the WPA mode as "Enterprise (WPA-Radius)" or "Personal (Pre-Shared Key)". |
| Pre-Shared key Format | Click on the drop list to select an Pre-Shared Key Format as Passphrase or Hex |
| Pre-shared Key | Enter the Pre-shared Key according to the pre-shared key format you select. |

Click **<Apply Change>** at the bottom of the screen to save the above configurations. You can now configure other advance sections or start using the AP.

Access Control

To restrict the Number of Access authentication of Stations, Set up the control list in this page.

Wireless Access Control

If you choose 'Allowed Listed', only those clients whose wireless MAC addresses are in the access control list will be able to connect to your Access Point. When 'Deny Listed' is selected, these wireless clients on the list will not be able to connect the Access Point.

Wireless Access Control Mode:

MAC Address: **Comment:**

Current Access Control List:

| MAC Address | Comment | Select |
|-------------|---------|--------|
| | | |

Configuration

Wireless Access Control Mode

Click on the drop list to choose the access control mode. You may select "Allow listed" to allow those allowed MAC addresses or select "Deny Listed" to ban those MAC addresses from accessing to this device.

MAC Address & Comment

To set up the Value of MAC Address & Comment; enter the MAC Address and Comment of station and click Apply Changes to save.

Current Access Control list

To Delete the station on the list, Click the check box in the select item and click the "Delete Selected". If you want to delete all stations on the list, click "Delete All" to remove all of them.

Click <Apply Change> button to save the above configurations. You can now configure other advance sections or start using the AP.

Statistics

On this page, you can monitor the sent & received packets counters of wireless, Ethernet LAN, and Ethernet WAN. To see the latest report, click refresh button.

Statistics

This page shows the packet counters for transmission and reception regarding to wireless and Ethernet networks.

| | | |
|---------------------|-------------------------|-------|
| Wireless LAN | <i>Sent Packets</i> | 0 |
| | <i>Received Packets</i> | 0 |
| Ethernet LAN | <i>Sent Packets</i> | 545 |
| | <i>Received Packets</i> | 58009 |

Refresh

Upgrade Firmware

To Upgrade Firmware,

STEPS

1. Click "browse..." button to select the firmware you want to upgrade.
2. Click Upload to start the upgrade process. Please don't close the WEB-browser and wait for the process to be completed.

Upgrade Firmware

This page allows you upgrade the Access Point firmware to new version. Please note, do not power off the device during the upload because it may crash the system.

Select File:

Save and Reload Settings

To save setting to file, click "Save..." button.

To load setting from file,

1. Click "Browse..." on the to select the file
2. Click upload to start the process and wait for it to complete

To reset setting to Default, click the Reset button to start the process.

Save/Reload Settings

This page allows you save current settings to a file or reload the settings from the file which was saved previously. Besides, you could reset the current configuration to factory default.

Save Settings to File:

Load Settings from File:

Reset Settings to Default:

Log out

Click the "Apply Change" button to log out the system and save your changes simultaneously.

Logout

This page is used to logout.

Do you want to logout ?

Product Specifications

| | |
|-----------------------------|--|
| Standard | IEEE802.3, 10BASE-T IEEE802.3u, 100BASE-TX IEEE802.3x full duplex operation and flow control IEEE802.11b wireless LAN infrastructure IEEE802.11g wireless LAN infrastructure |
| Interface | 1 * LAN port Antenna: 802.11b/g wireless reverse SMA detachable |
| Cable Connections | RJ-45 (10BASE-T): Category 3,4,5 UTP RJ-45 (100BASE-TX): Category 5 UTP |
| Network Data Rate | 802.11b: 1, 2, 5.5 and 11Mbps 802.11g: 6, 9, 12, 18, 24, 36, 48, and 54Mbps |
| Transmission Mode | Auto-Negotiation (Full-duplex, Half-duplex) |
| LED indications | 1*Power, 1*WLAN, 1*LAN |
| Security | 64/128-bit WEP, WPA(TKIP with IEEE 802.1x), WPA2, AES |
| Receiver Sensitivity | 54Mbps OFDM, 10%PER, -68dBm 11Mbps CCK, 10%PER, -86dBm 1Mbps BPSK, 10%PER, -93dBm |
| Memory | Flash: 2MB, SDRAM : 8MB |
| Transmit Power | 11b: 22.64dBm 11g: 24.23dBm |
| Range Coverage | Indoor 30m at 54Mbps,Outdoor 61m at 54Mbps. |
| Emission | FCC CLASS B, CE |
| Environmental | Operating Temperature: 0° ~ 40°C (32° ~ 104°F) Storage Temperature: -10° ~ 70°C (-14° ~ 140°F) Humidity: 10 ~ 95% RH non-condensing |

| | |
|-----------------------|--|
| Power Supply | External Power Adapter, 12VDC/ 1A |
| <i>Antenna</i> | Antenna Gain: 2 DBI Antenna Type: DIPOLE Antenna Connector Type: REVERSE SMA |
| Channel | USA 11, Europe 13, Japan 14, Taiwan 11, |
| Emission | FCC Part 15.247 for US, (2.412~2.462MHz) ETS 300 328 for Europe, (2.400~2483.5 MHz) DGT LP0002 for Taiwan (2.412~2.462MHz) |