

# 1 Annex C – Internal pictures of EUT

## 1.1 List of Pictures

Picture 1: Top view of EUT with host interface TC20 with antenna connector..... 2

Picture 2: Back view of EUT with host interface TC20 with antenna connector ..... 2

Picture 3: Top view of EUT with host interface TC38 with antenna connector..... 3

Picture 4: Back view of EUT with host interface TC38 with antenna connector ..... 3

Picture 5: Top view of EUT with host interface TC20 with onboard antenna ..... 4

Picture 6: Back view of EUT with host interface TC20 with onboard antenna ..... 4

Picture 7: Top view of EUT with host interface TC38 with onboard antenna ..... 5

Picture 8: Back view of EUT with host interface TC38 with onboard connector..... 5

Picture 9: Top view of label..... 6

Picture 10: Top view of EUT with host interface TC20 with antenna connector without shielding ..... 6

Picture 11: Top view of EUT with host interface TC38 with antenna connector without shielding ..... 7

Picture 12: Top view of EUT for duty cycle measurement ..... 7

Picture 13: Top view of opened EUT for duty cycle measurement ..... 8

Picture 14: Detailed view of module in EUT for duty cycle measurements ..... 8

Picture 15: Top view of antenna cable..... 9



EMV **TESTHAUS** GmbH  
 Gustav-Hertz-Straße 35  
 94315 Straubing  
 Germany

HBC radiomatic GmbH  
 RF module with 2.4 GHz frequency hopping  
 TC241-TC20, TC241-TC38, TC240-TC20, TC240-TC38

180811-AU01+W01  
 Annex C



Picture 1: Top view of EUT with host interface TC20 with antenna connector



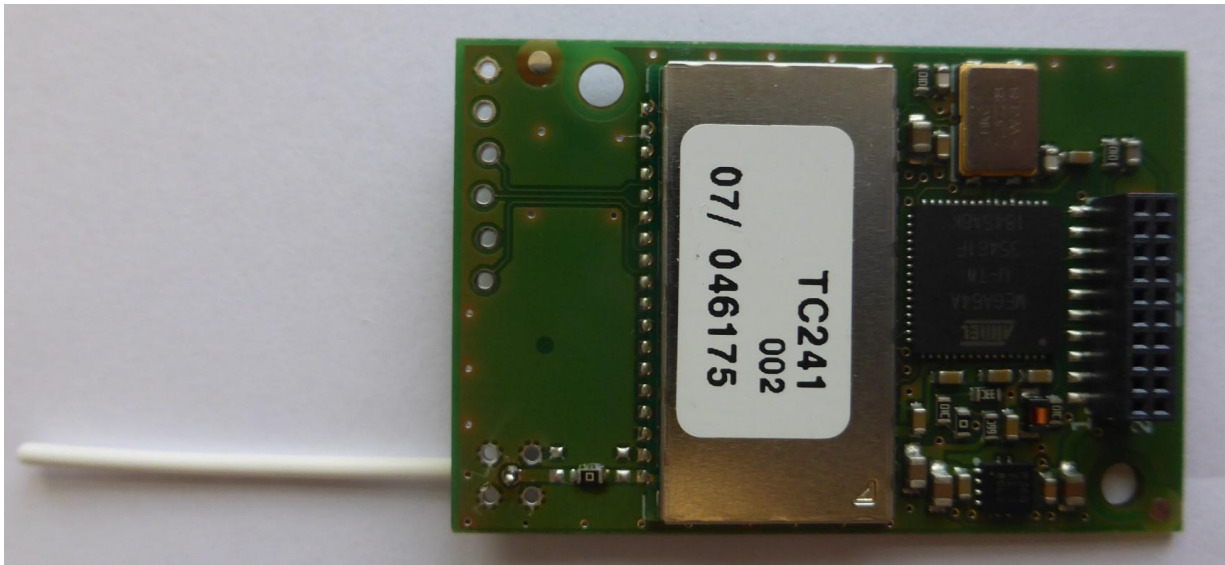
Picture 2: Back view of EUT with host interface TC20 with antenna connector



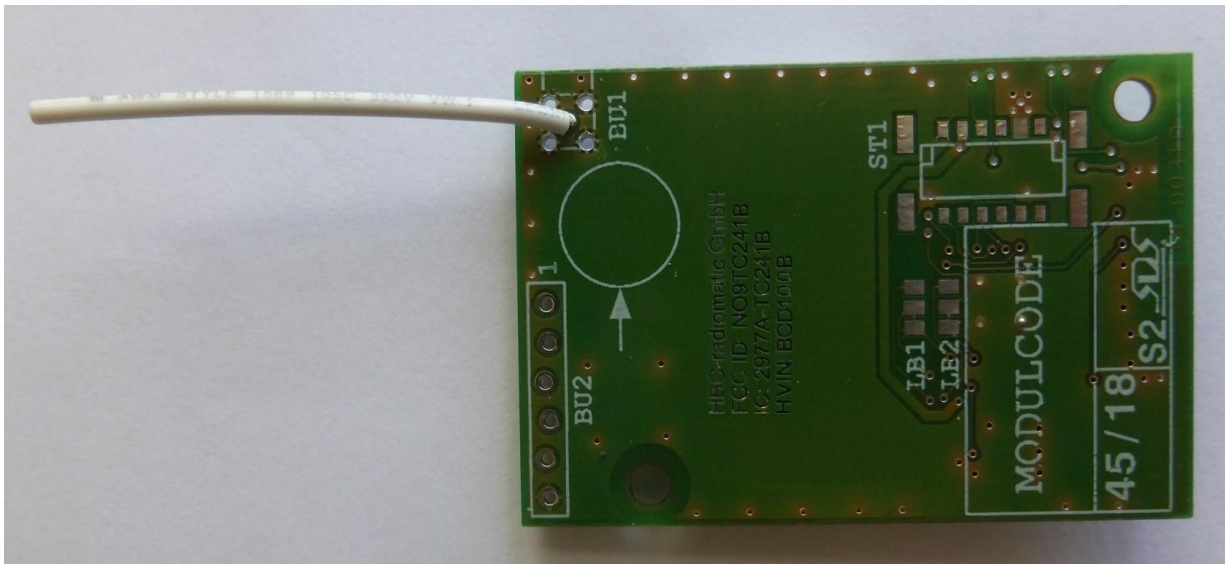
Picture 3: Top view of EUT with host interface TC38 with antenna connector



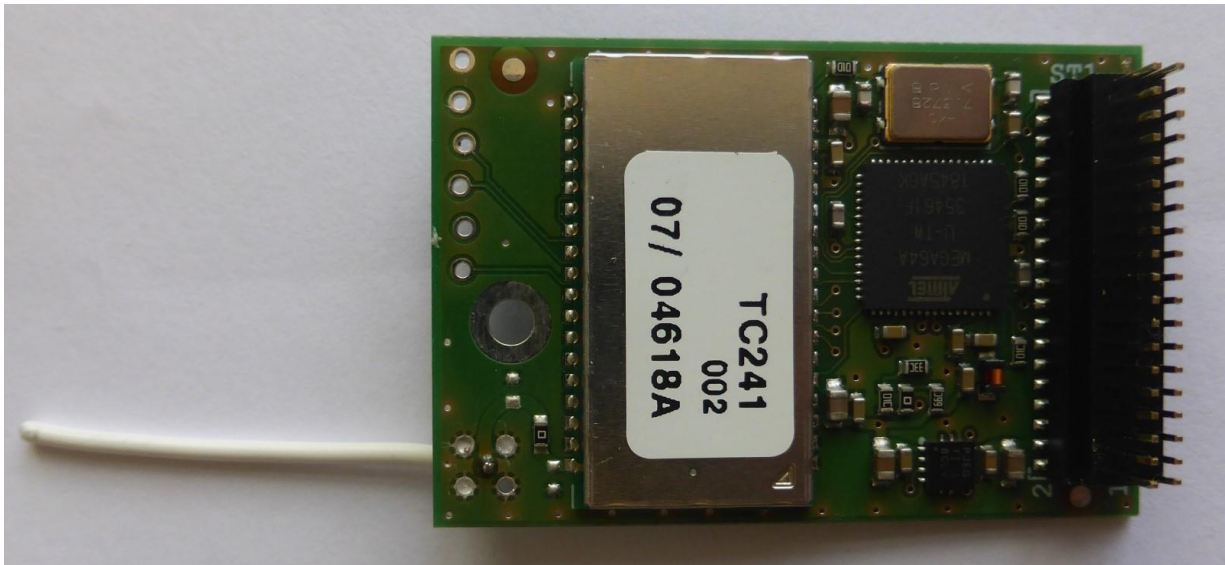
Picture 4: Back view of EUT with host interface TC38 with antenna connector



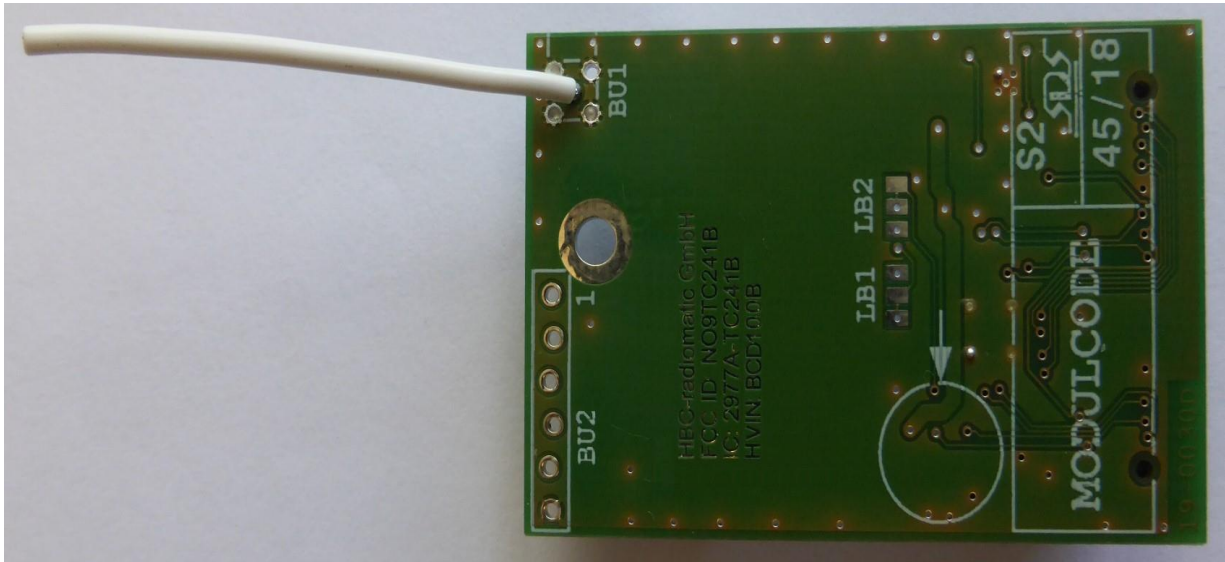
Picture 5: Top view of EUT with host interface TC20 with onboard antenna



Picture 6: Back view of EUT with host interface TC20 with onboard antenna



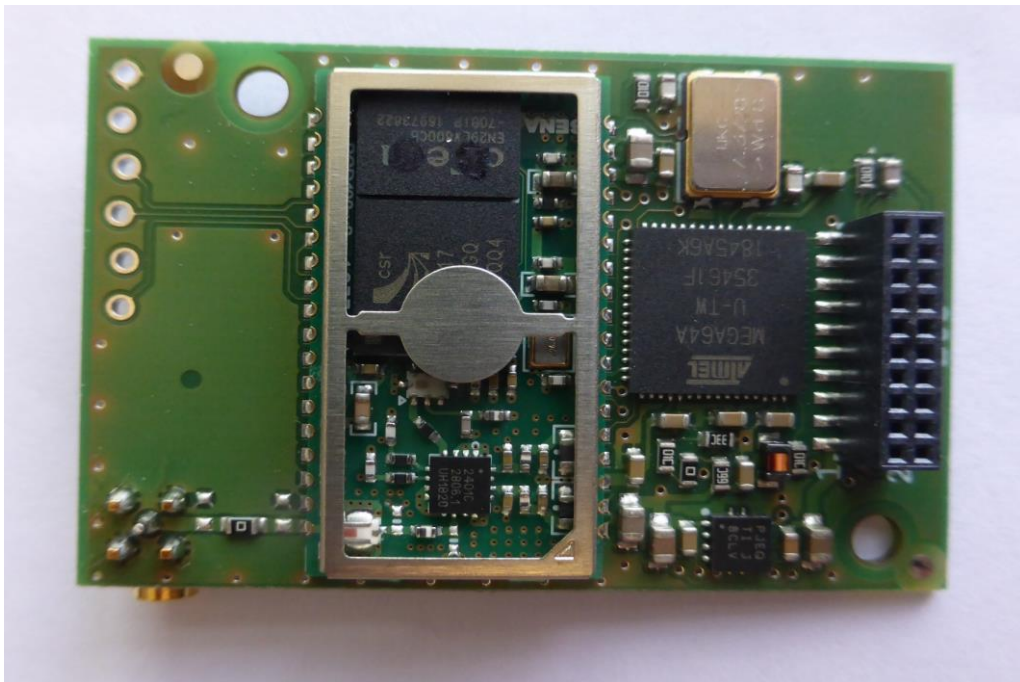
Picture 7: Top view of EUT with host interface TC38 with onboard antenna



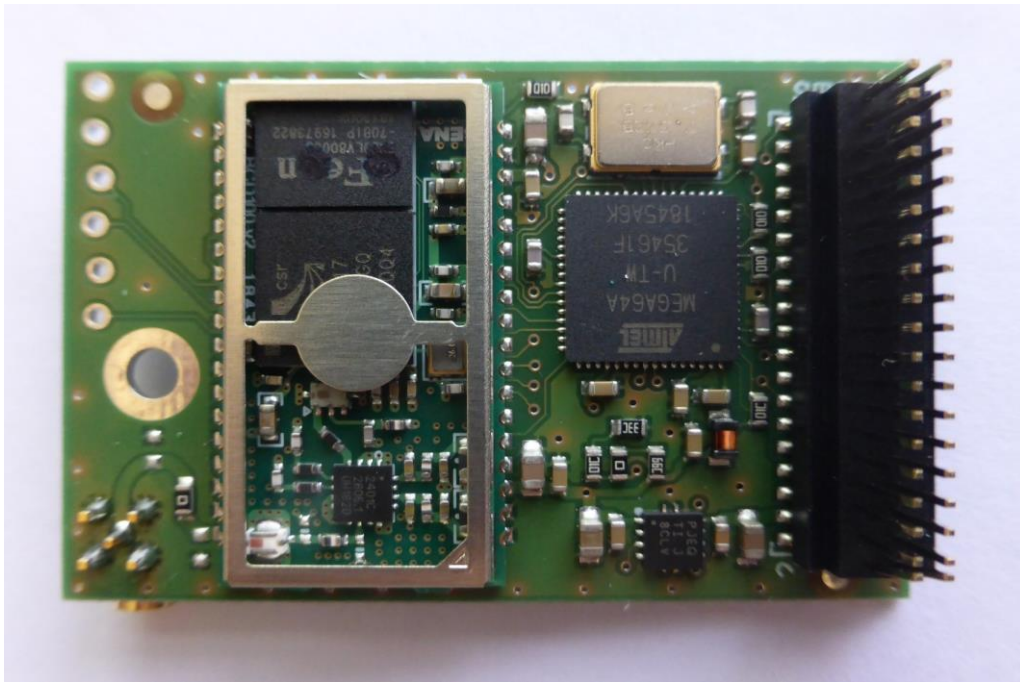
Picture 8: Back view of EUT with host interface TC38 with onboard connector



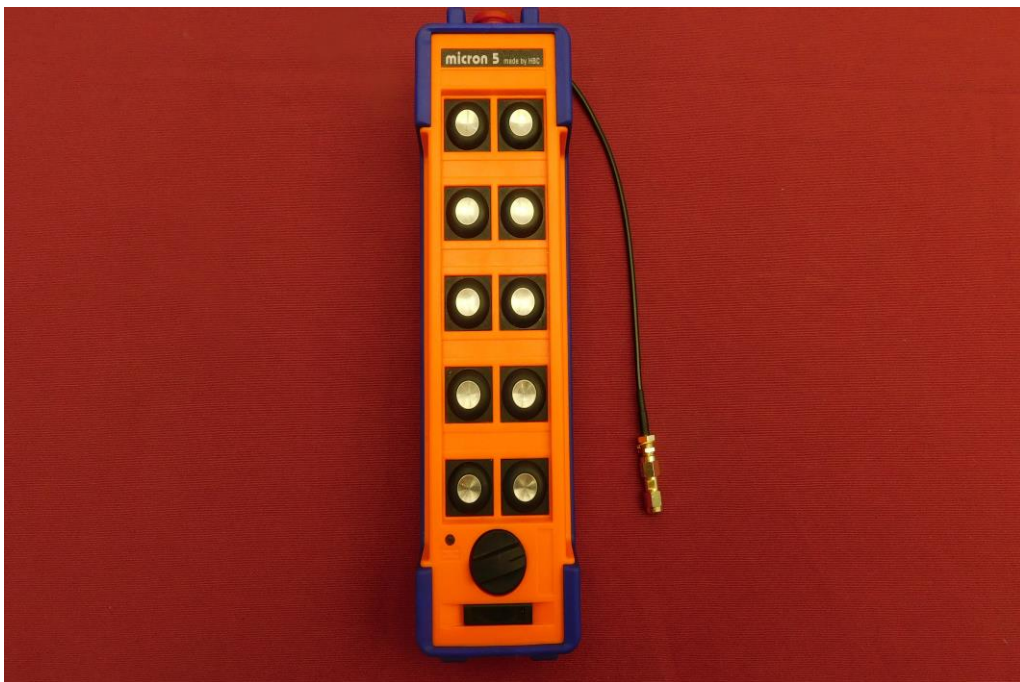
Picture 9: Top view of label



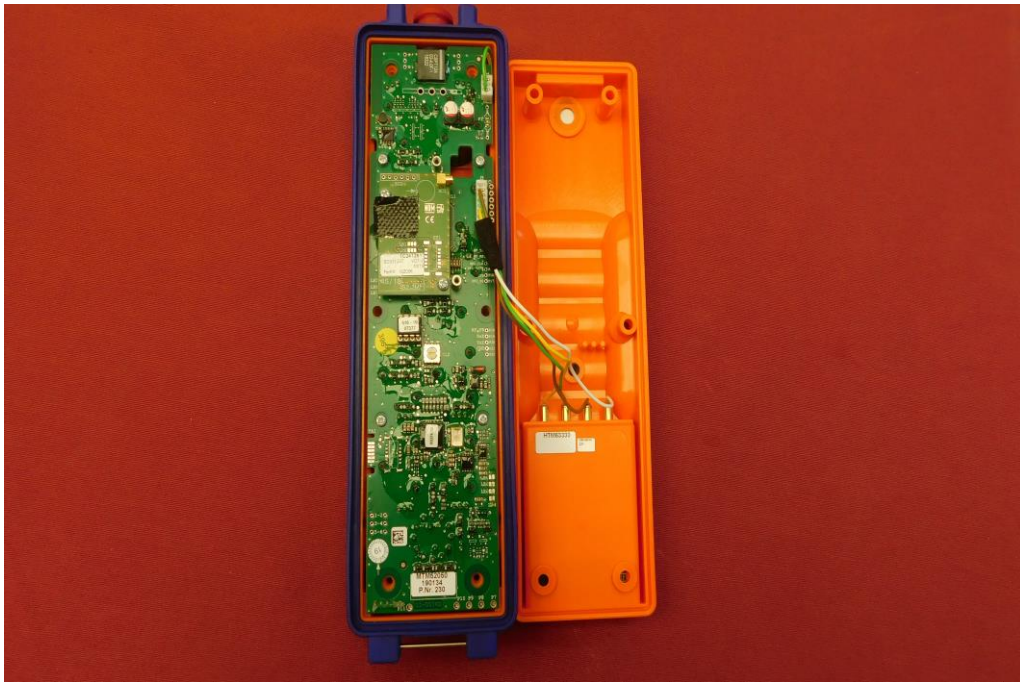
Picture 10: Top view of EUT with host interface TC20 with antenna connector without shielding



Picture 11: Top view of EUT with host interface TC38 with antenna connector without shielding



Picture 12: Top view of EUT for duty cycle measurement

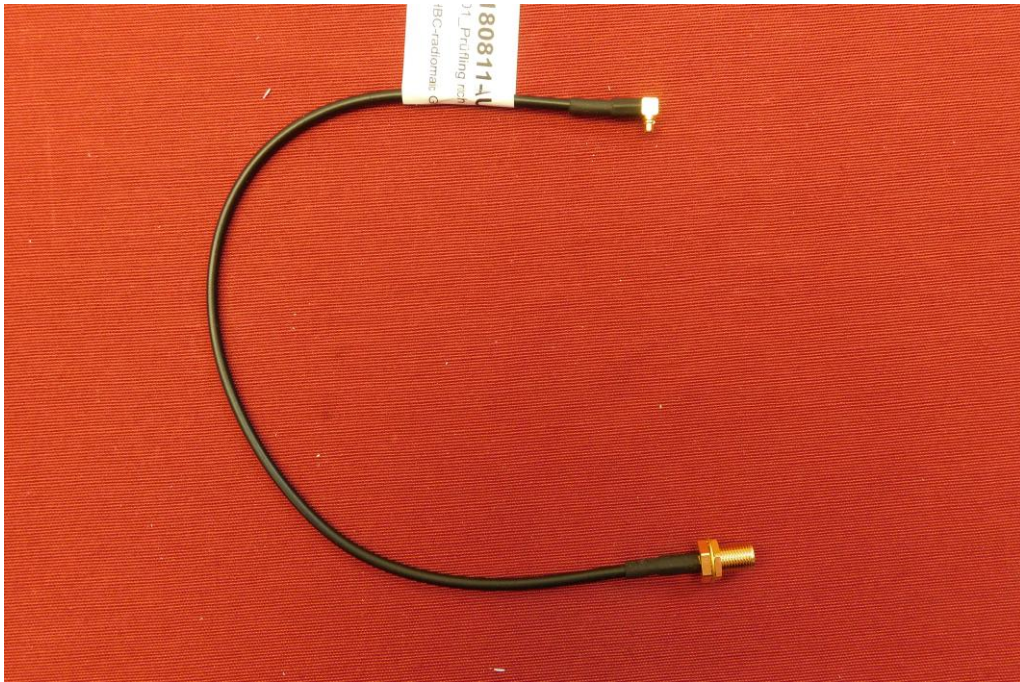


Picture 13: Top view of opened EUT for duty cycle measurement



Picture 14: Detailed view of module in EUT for duty cycle measurements





Picture 15: Top view of antenna cable