

1 Annex C – documentation

1.1 List of Pictures

Picture 1: EUT - open housing.....	2
Picture 2: EUT - main PCB top side	2
Picture 3: EUT - main PCB bottom side	3
Picture 4: EUT - main PCB removed	3
Picture 5: EUT - location RFID module.....	4
Picture 6: EUT - RFID module top side	5
Picture 7: EUT - RFID module bottom side.....	5

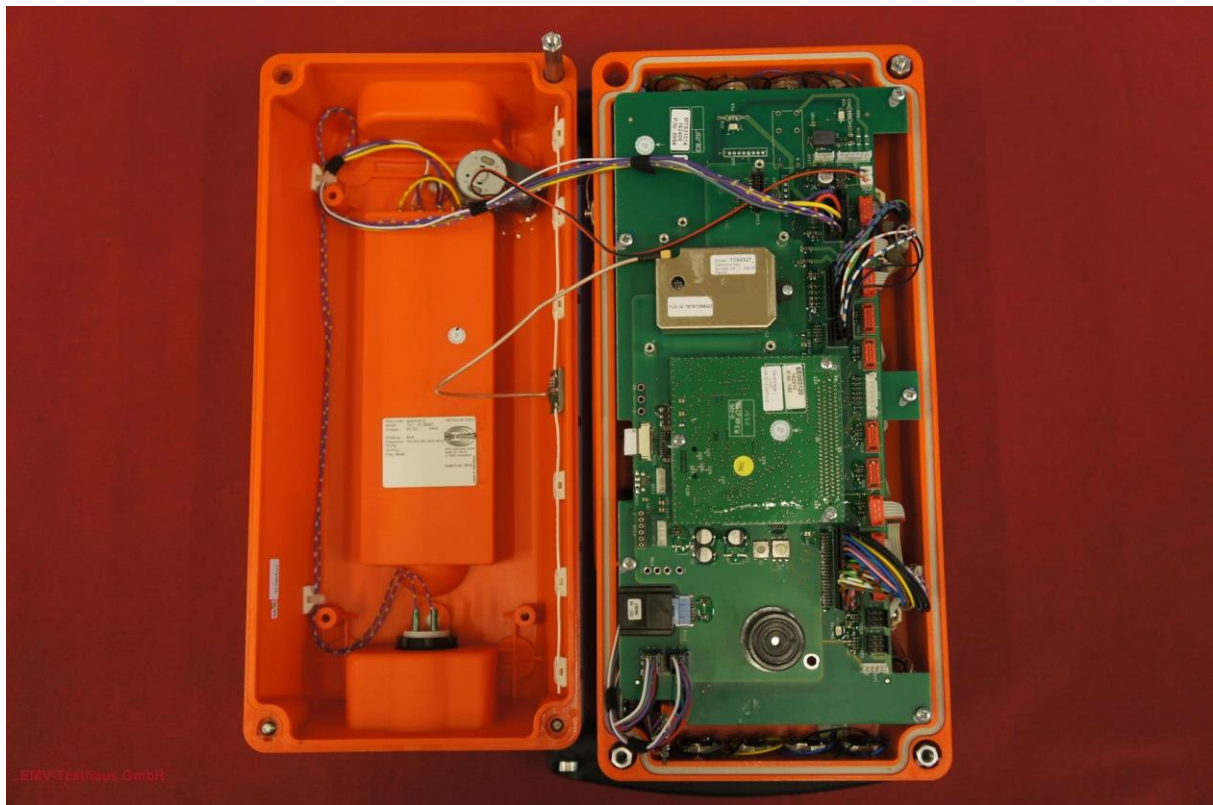


EMV **TESTHAUS** GmbH
Gustav-Hertz-Straße 35
94315 Straubing
Germany

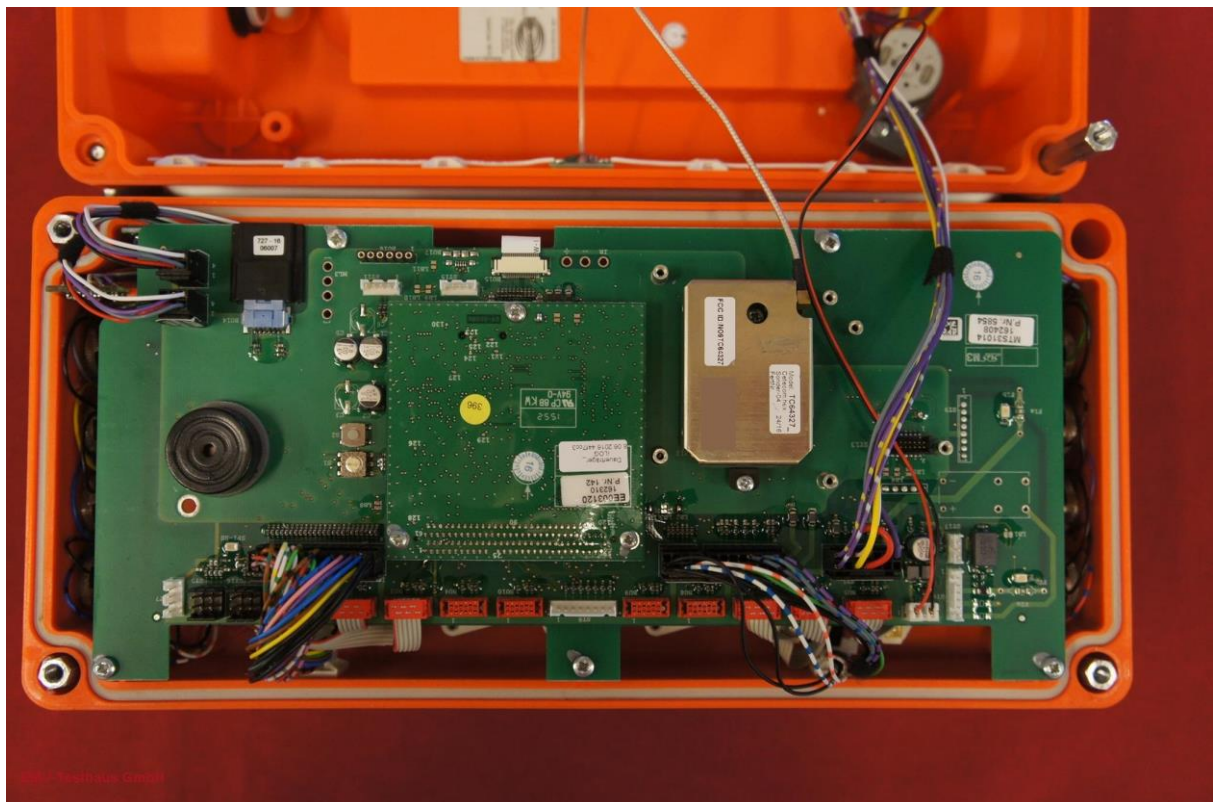
HBC-radiomatic GmbH
Remote-Control
spectrum D
radiomatic® iLOG Mode

160050-AU01+W14
Annex C

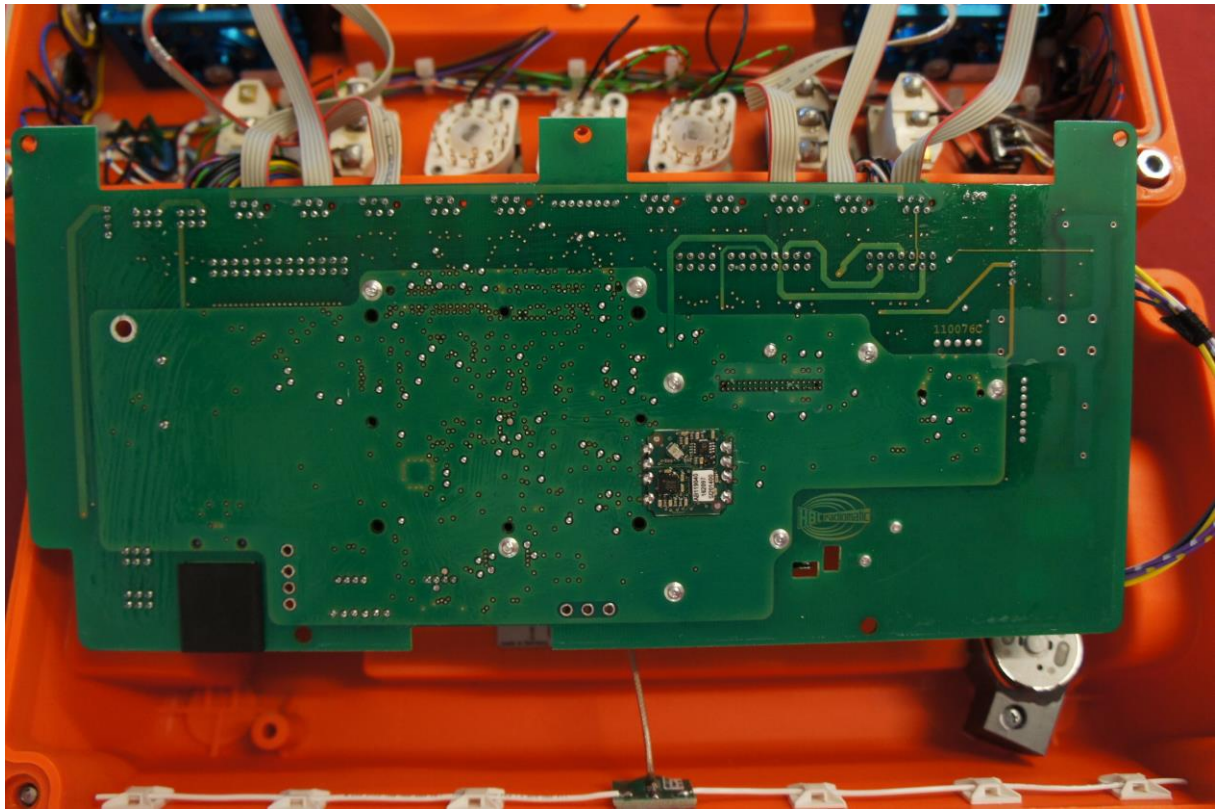
Page 1 of 5



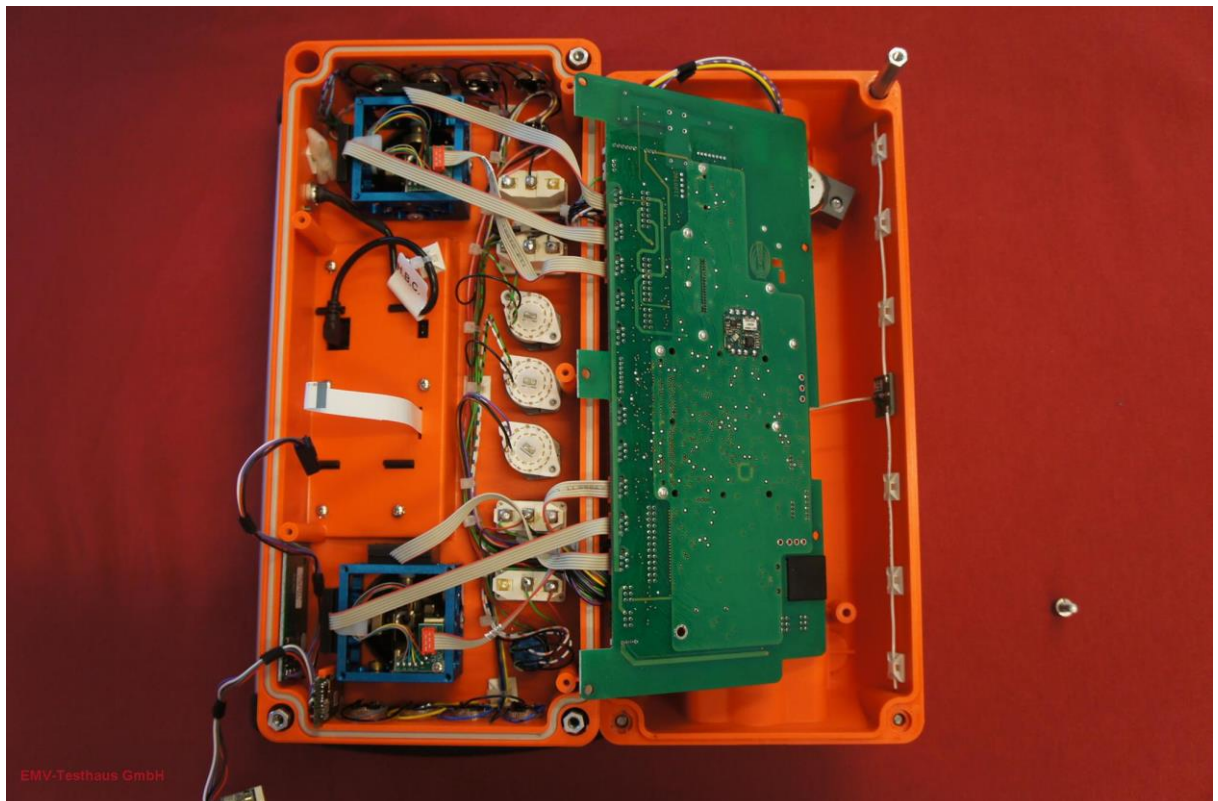
Picture 1: EUT - open housing



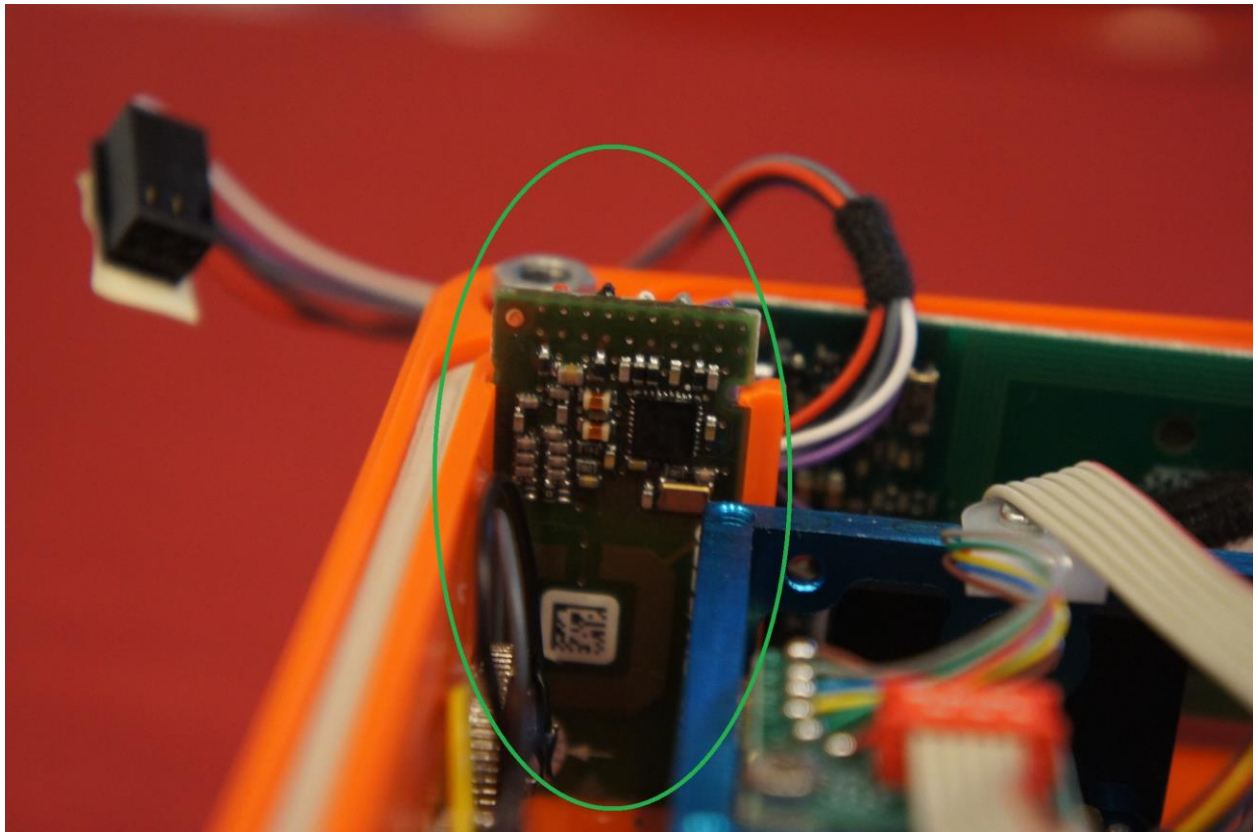
Picture 2: EUT - main PCB top side



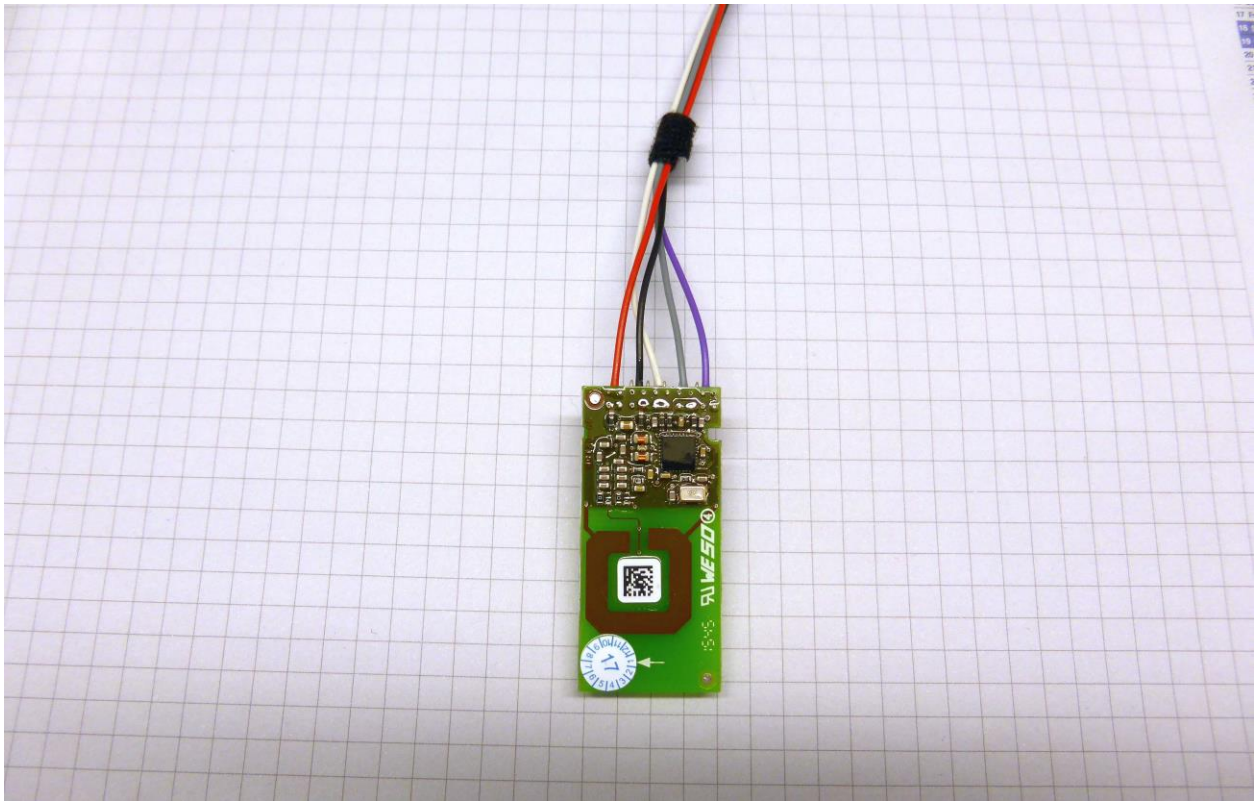
Picture 3: EUT - main PCB bottom side



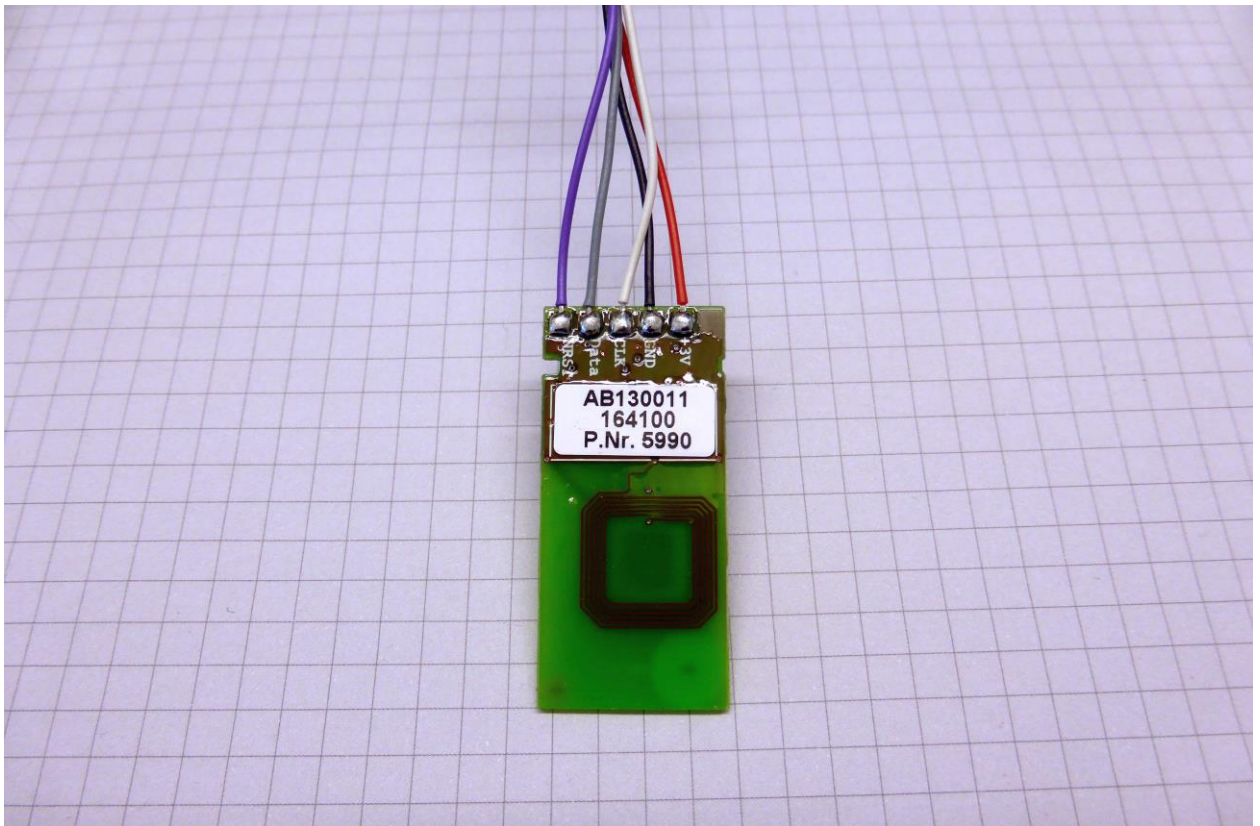
Picture 4: EUT - main PCB removed



Picture 5: EUT - location RFID module



Picture 6: EUT - RFID module top side



Picture 7: EUT - RFID module bottom side