

1 Annex C – documentation

1.1 List of Pictures

Picture 1: EUT - open housing.....2

Picture 2: EUT - main PCB top side2

Picture 3: EUT - main PCB bottom side3

Picture 4: EUT - main PCB removed3

Picture 5: EUT - location RFID module.....4

Picture 6: EUT - RFID module top side4

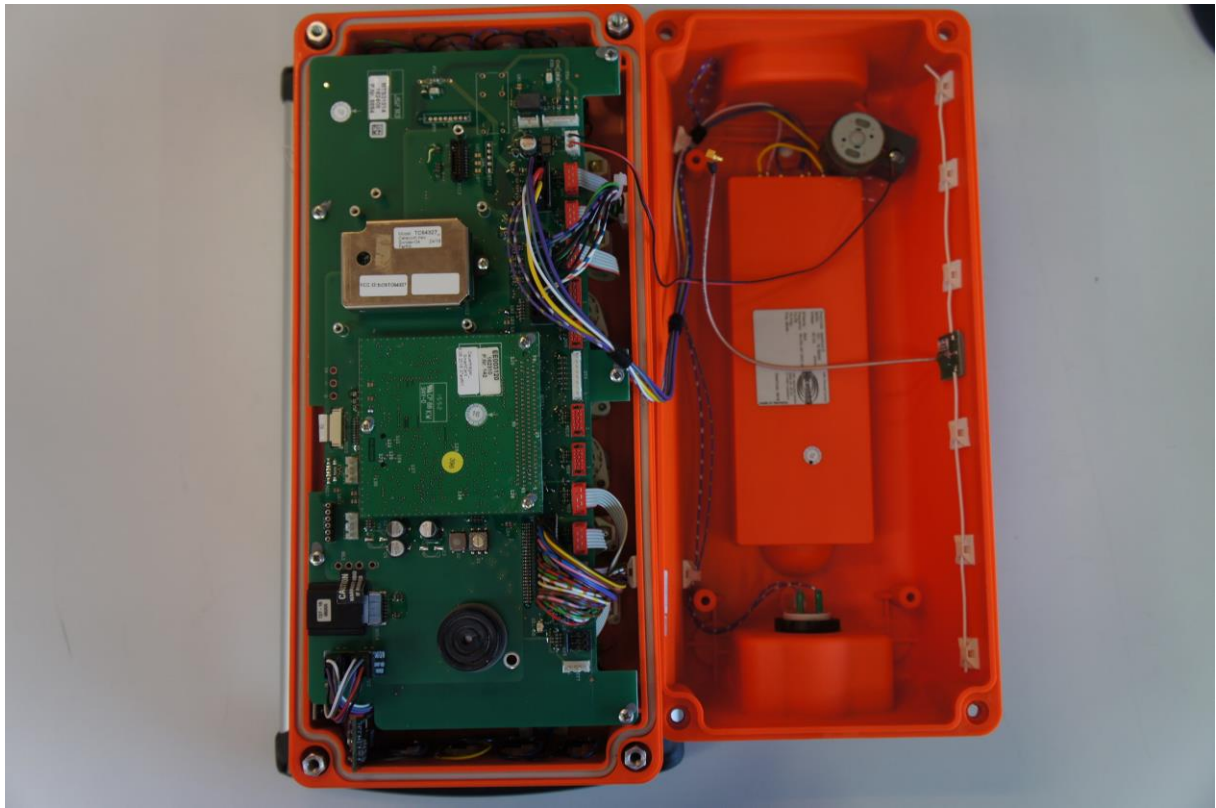
Picture 7: EUT - RFID module bottom side.....5



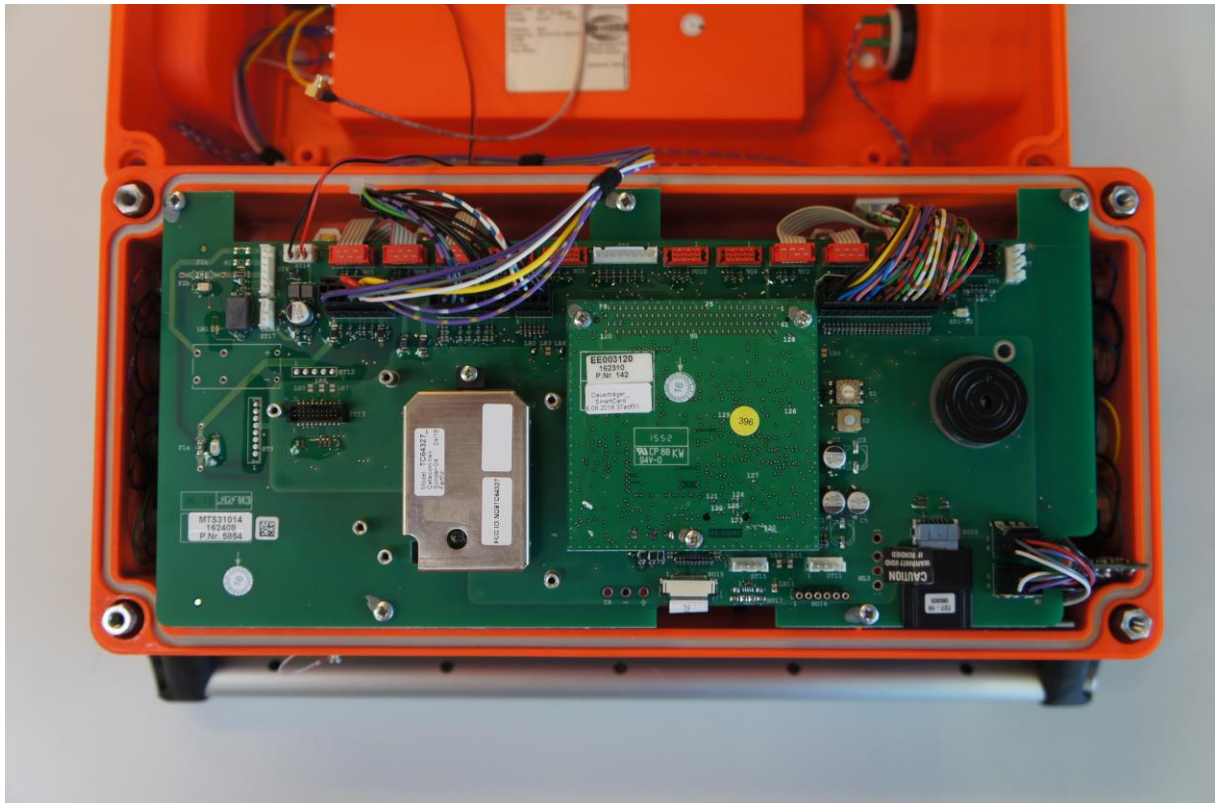
EMV **TESTHAUS** GmbH
Gustav-Hertz-Straße 35
94315 Straubing
Germany

HBC-radiomatic GmbH
Remote-Control
spectrum D
merlin® TUC Mode

160050-AU01+W12
Annex C



Picture 1: EUT - open housing



Picture 2: EUT - main PCB top side

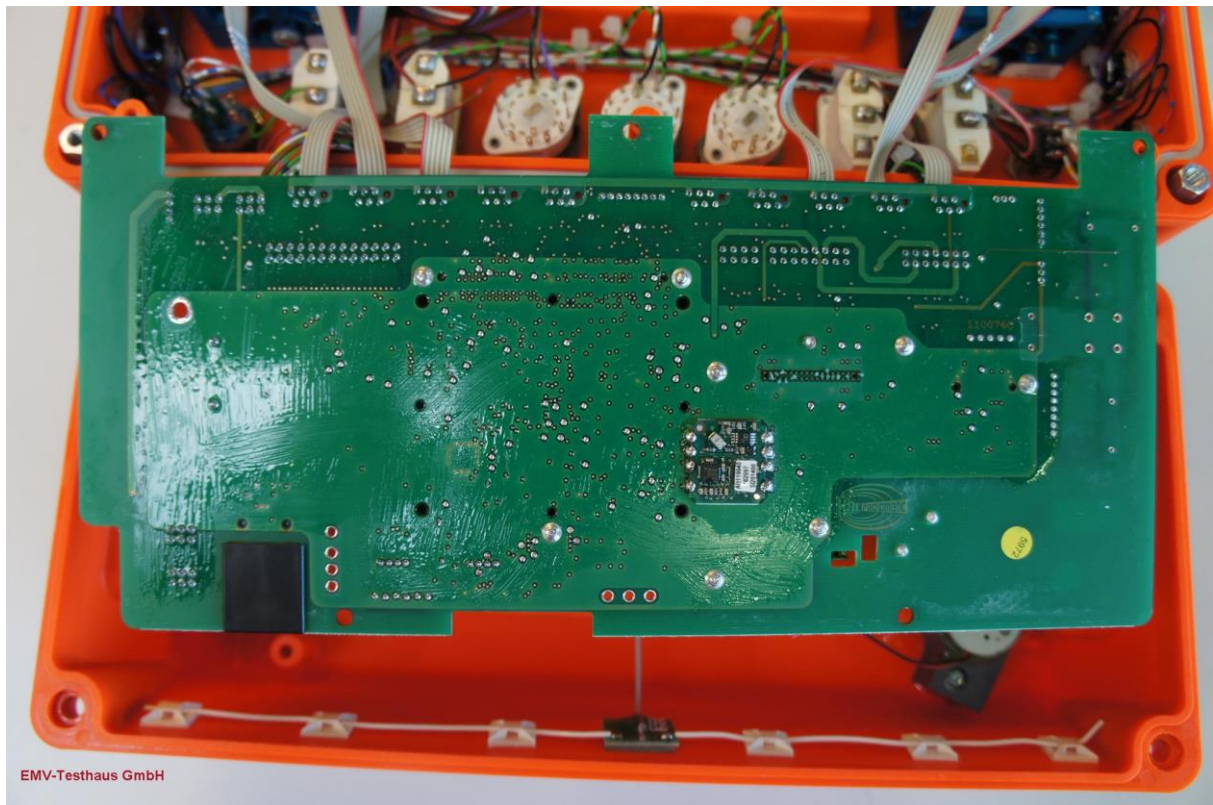


EMV **TESTHAUS** GmbH
 Gustav-Hertz-Straße 35
 94315 Straubing
 Germany

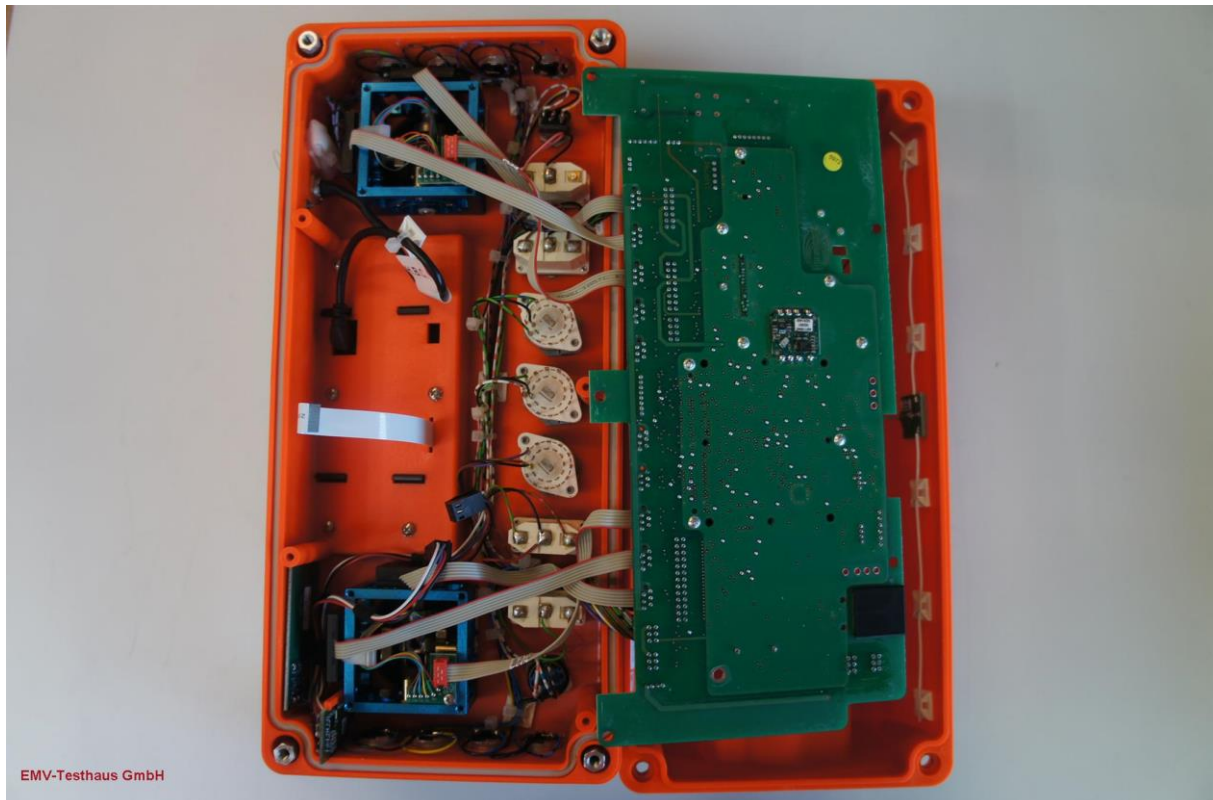
HBC-radiomatic GmbH
 Remote-Control
 spectrum D
 merlin® TUC Mode

160050-AU01+W12
 Annex C

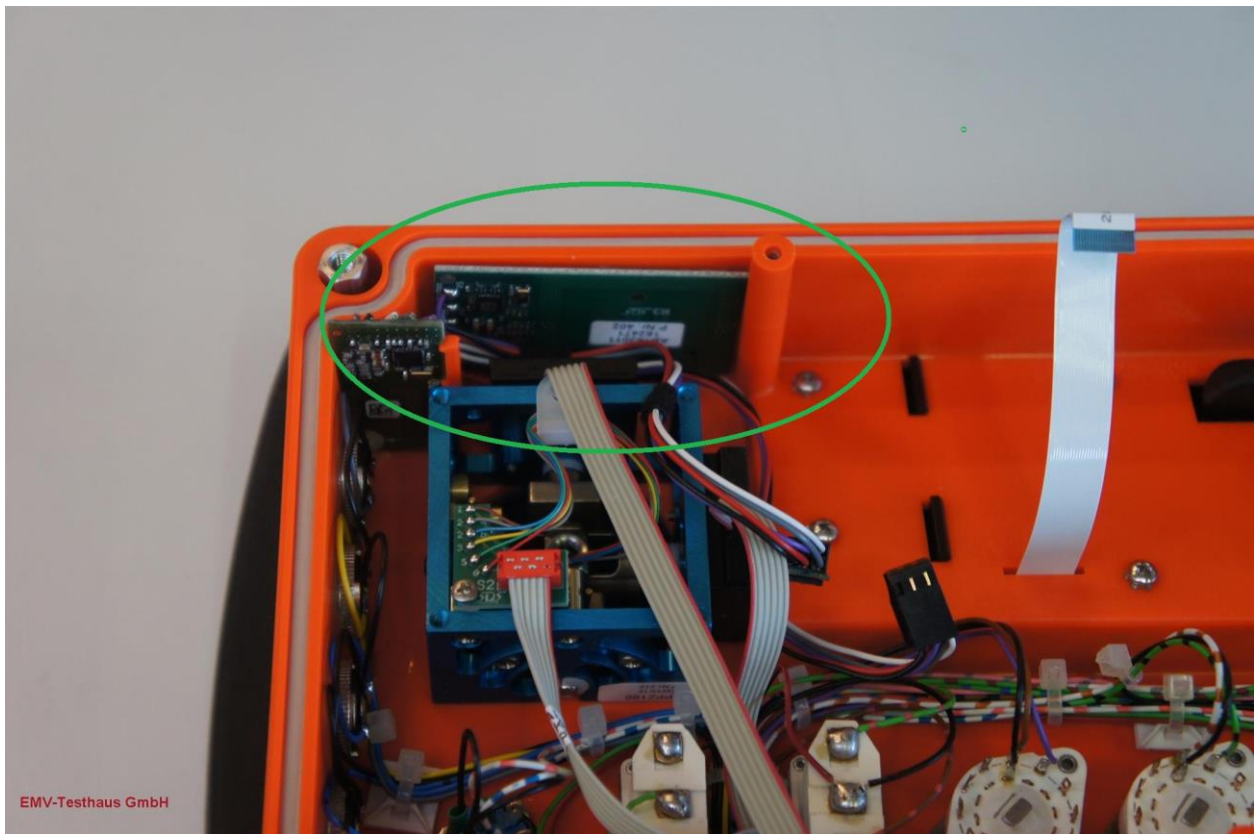
Page 2 of 5



Picture 3: EUT - main PCB bottom side



Picture 4: EUT - main PCB removed



EMV-Testhaus GmbH

Picture 5: EUT - location RFID module



Picture 6: EUT - RFID module top side

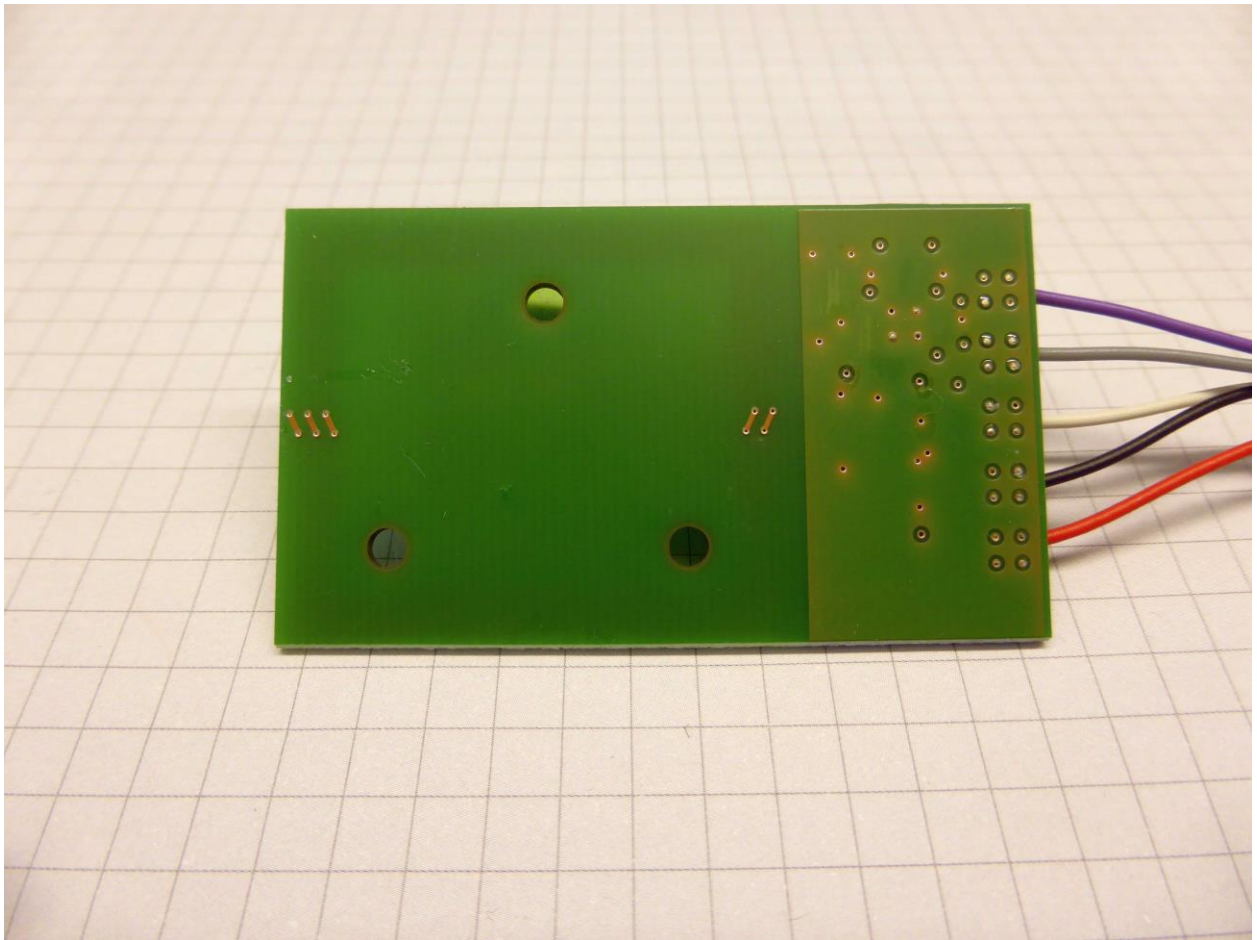


EMV **TESTHAUS** GmbH
 Gustav-Hertz-Straße 35
 94315 Straubing
 Germany

HBC-radiomatic GmbH
 Remote-Control
 spectrum D
 merlin® TUC Mode

160050-AU01+W12
 Annex C

Page 4 of 5



Picture 7: EUT - RFID module bottom side