

1 Annex C – documentation

1.1 List of Pictures

Picture 1: EUT - open housing.....2

Picture 2: EUT - main PCB top side2

Picture 3: EUT - main PCB bottom side3

Picture 4: EUT - main PCB, RF module and piggyback board removed3

Picture 5: EUT - piggyback board top side4

Picture 6: EUT - piggyback board bottom side4

Picture 7: EUT - main PCB removed5

Picture 8: EUT - location RFID module.....5

Picture 9: EUT - RFID module top side6

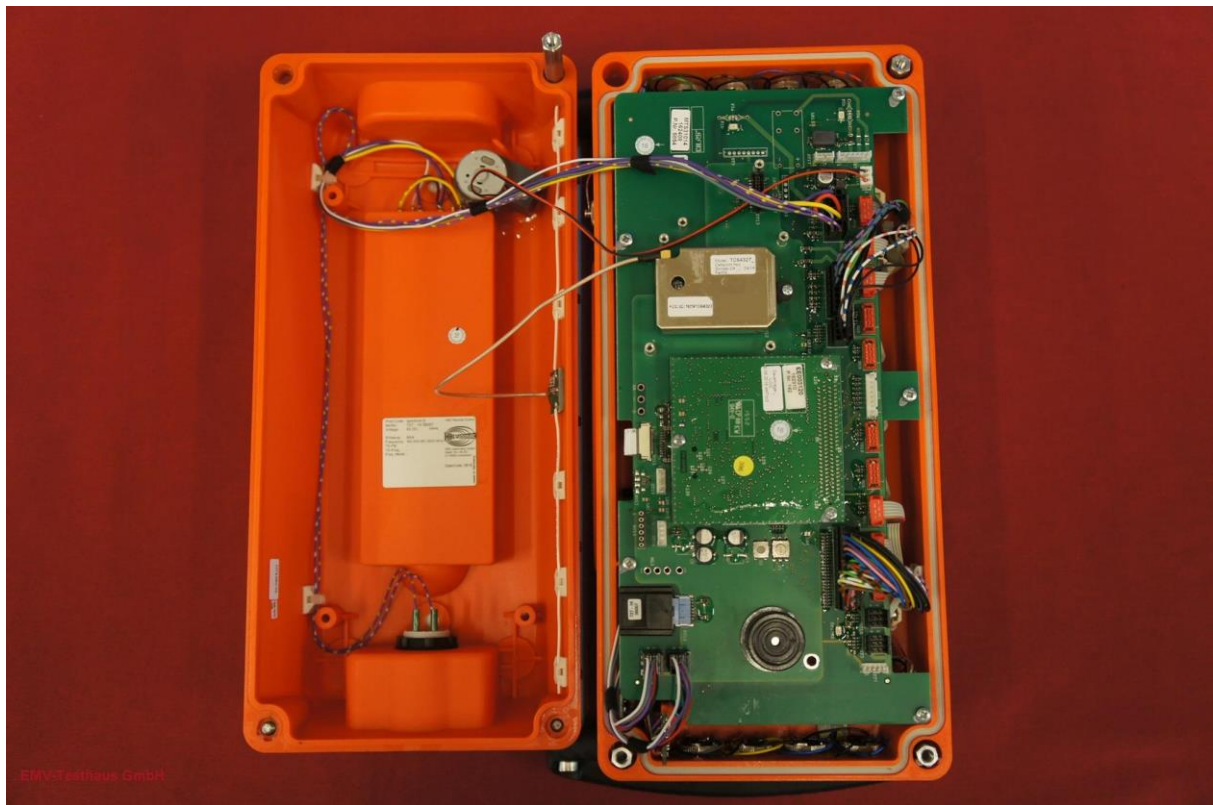
Picture 10: EUT - RFID module bottom side.....6



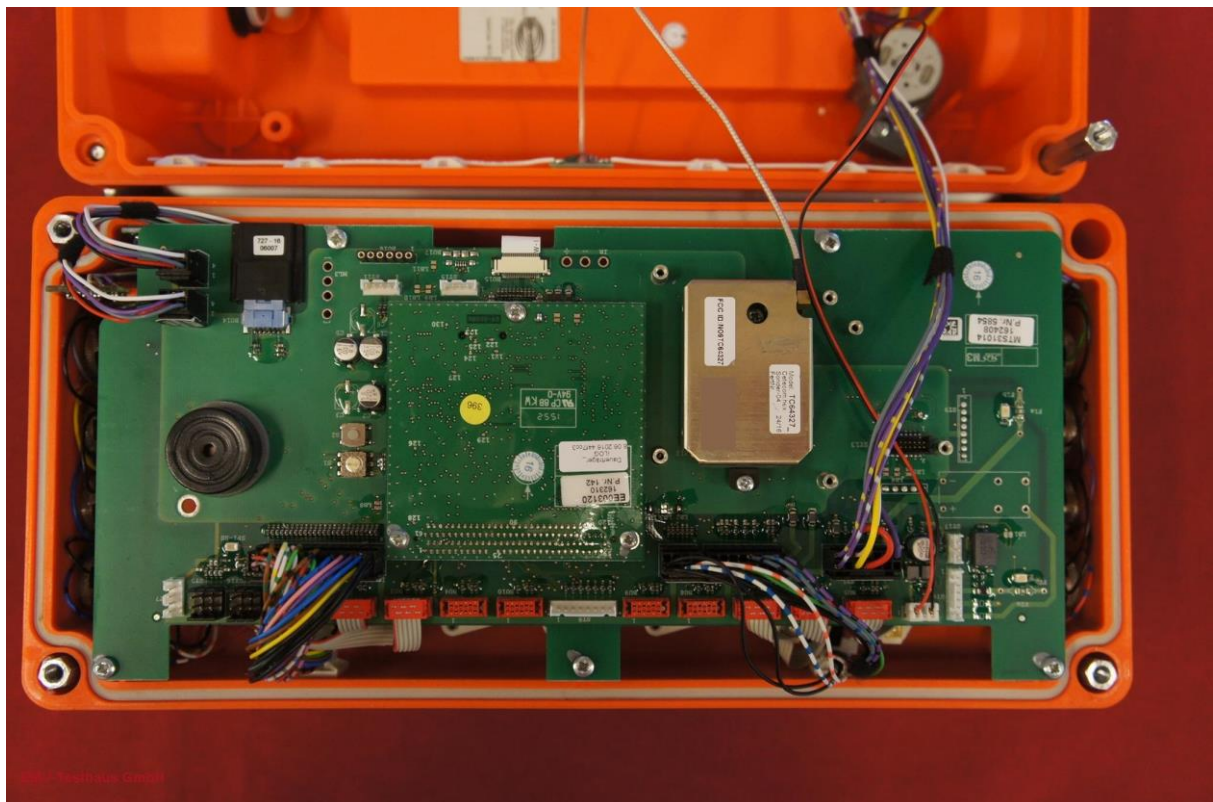
EMV **TESTHAUS** GmbH
Gustav-Hertz-Straße 35
94315 Straubing
Germany

HBC-radiomatic GmbH
Remote-Control
spectrum D
radiomatic® iLOG Mode

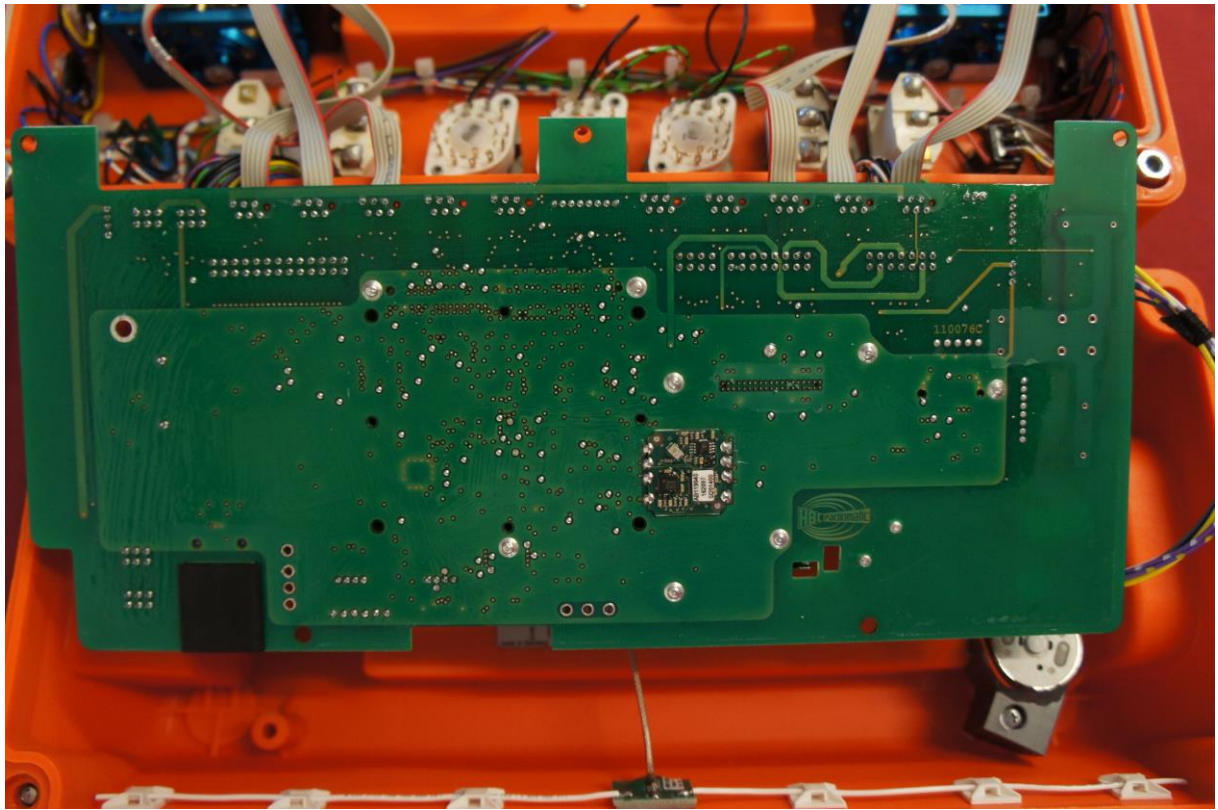
160050-AU01+W14
Annex C



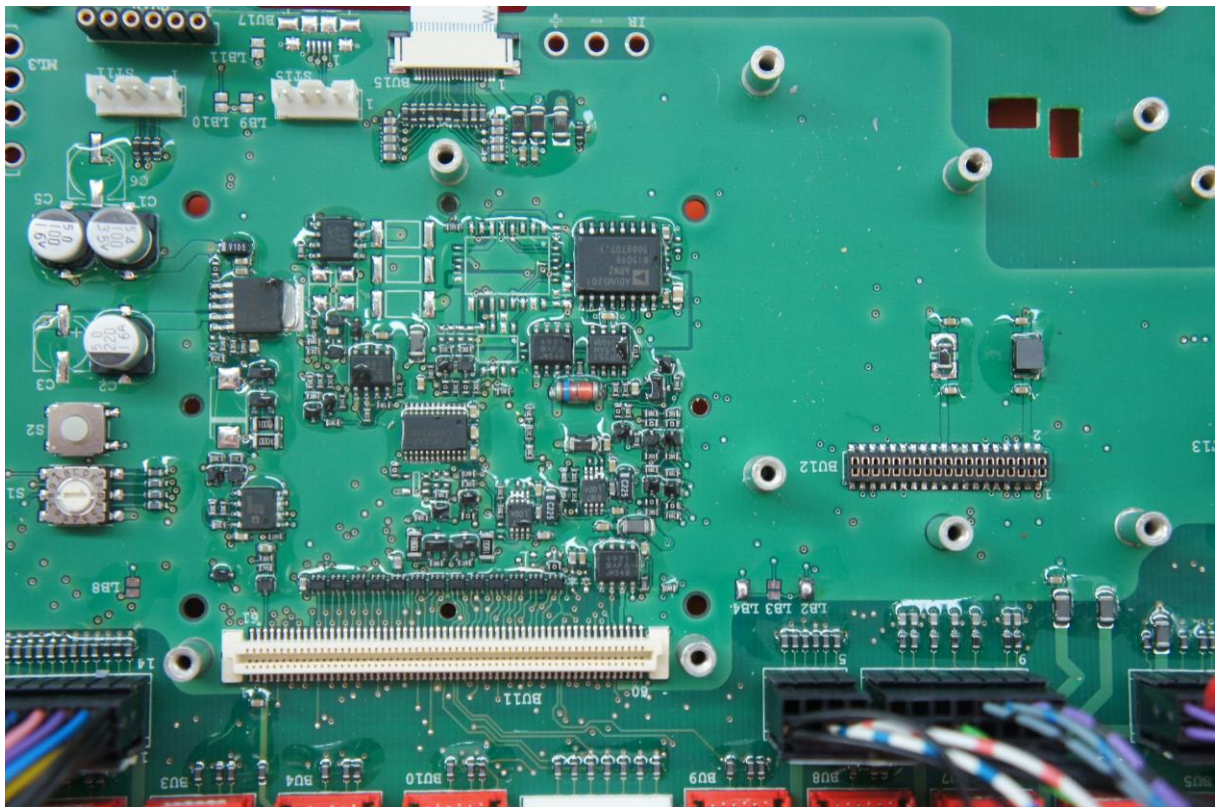
Picture 1: EUT - open housing



Picture 2: EUT - main PCB top side



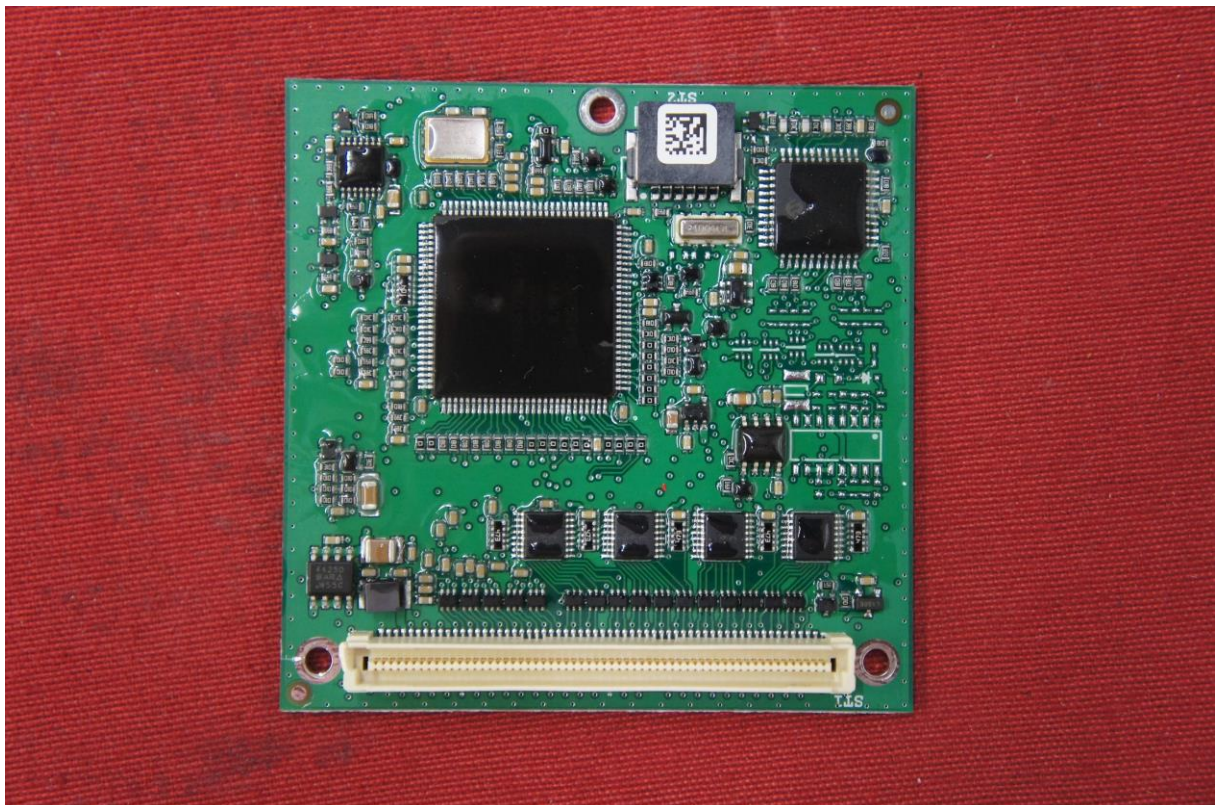
Picture 3: EUT - main PCB bottom side



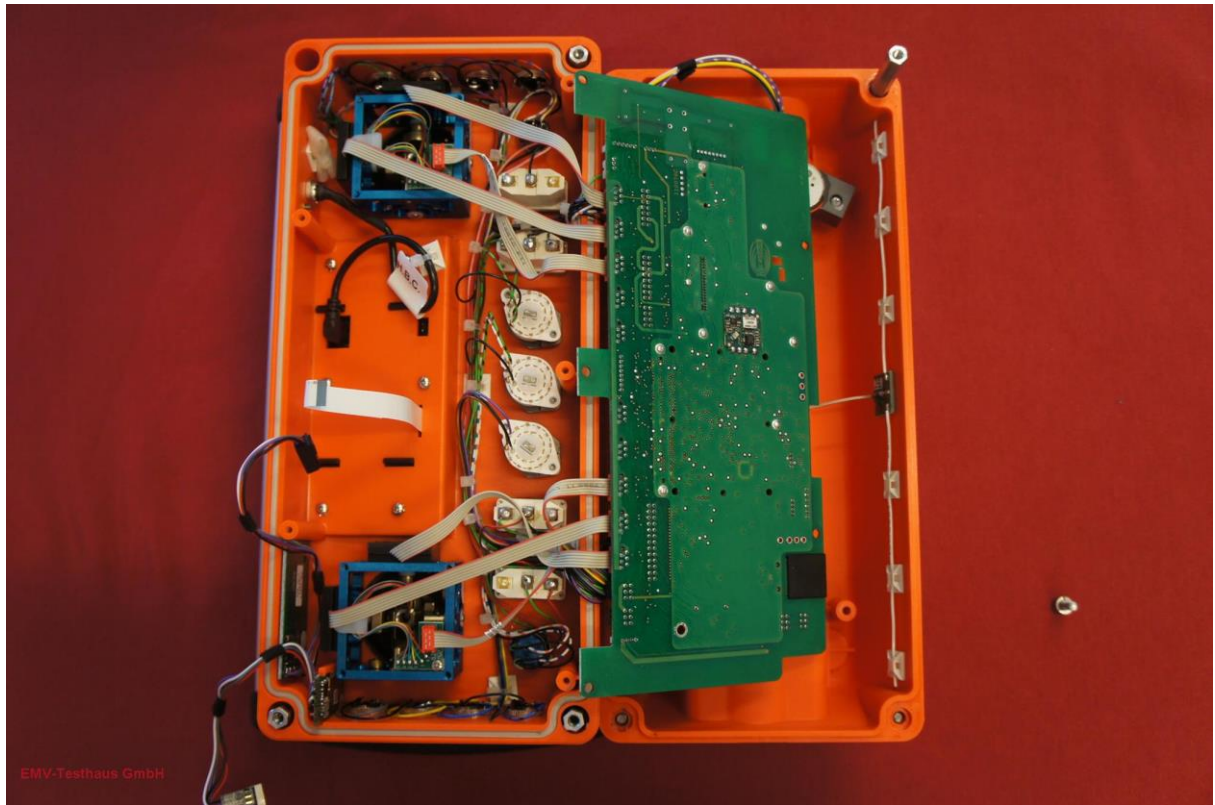
Picture 4: EUT - main PCB, RF module and piggyback board removed



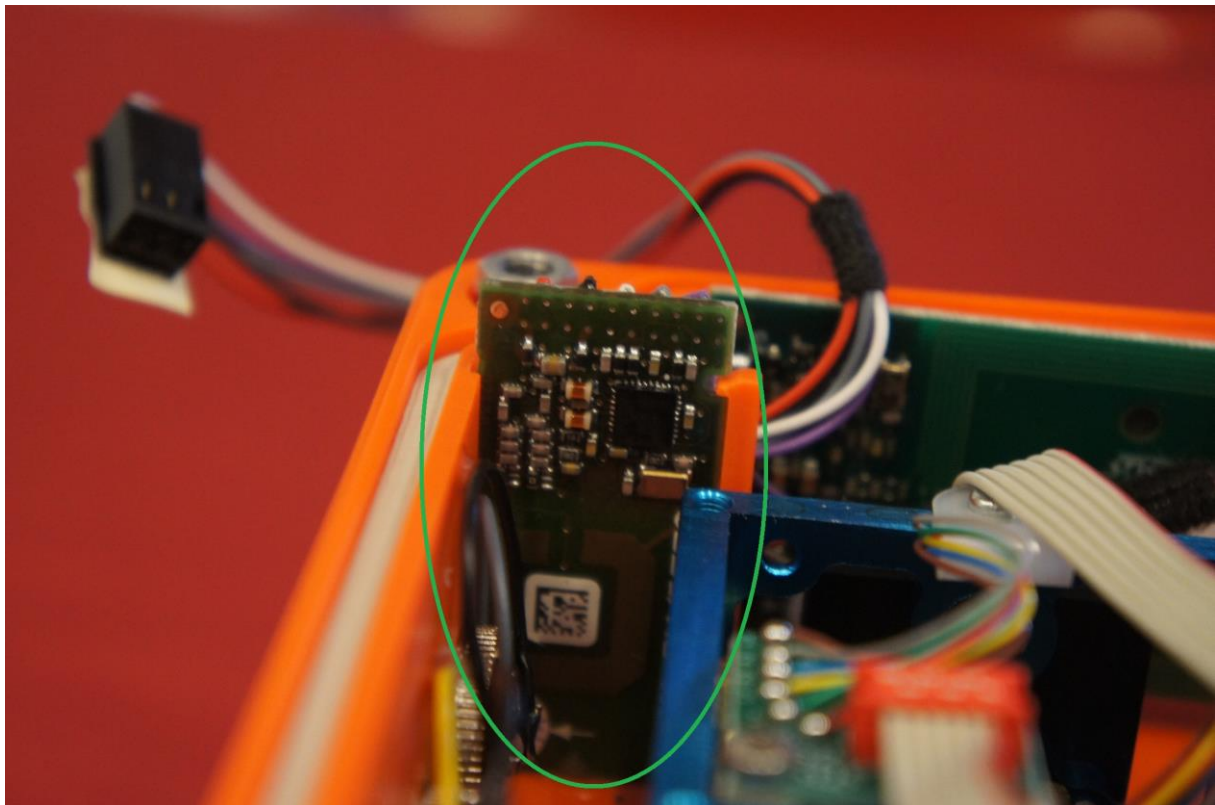
Picture 5: EUT - piggyback board top side



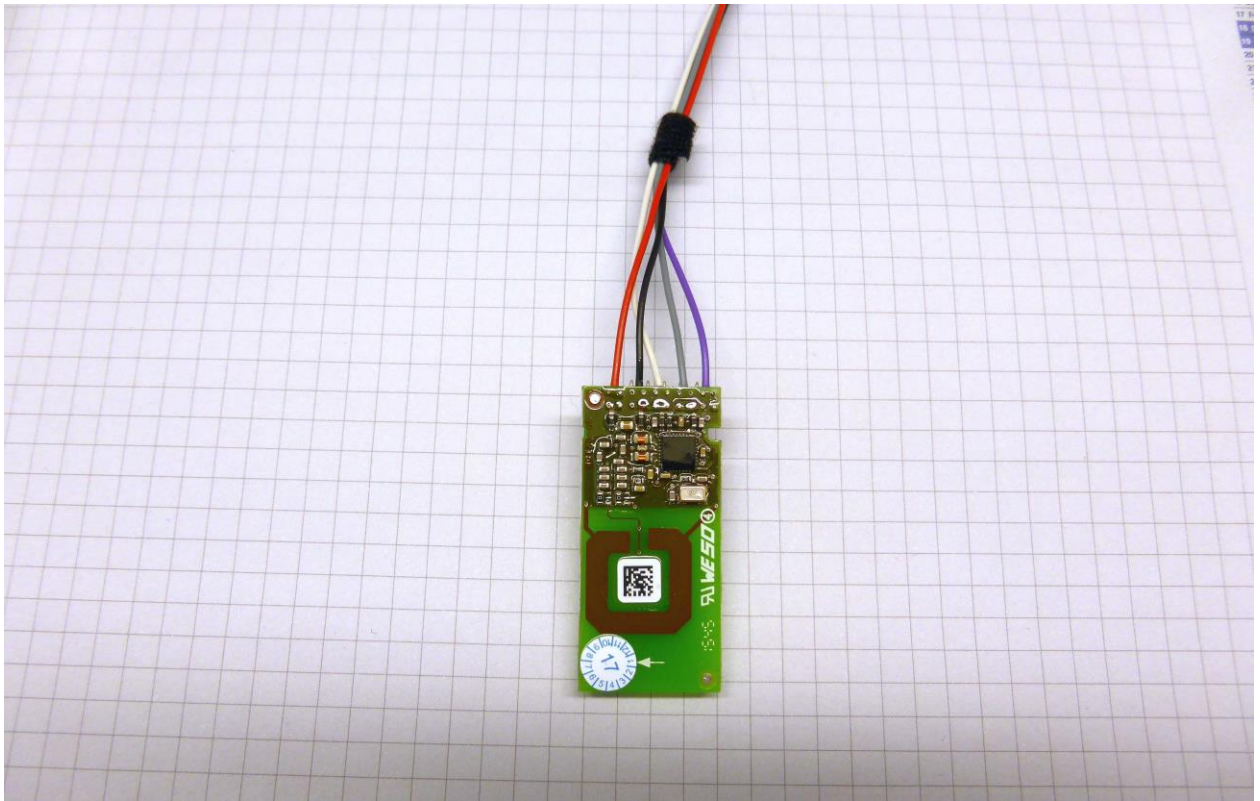
Picture 6: EUT - piggyback board bottom side



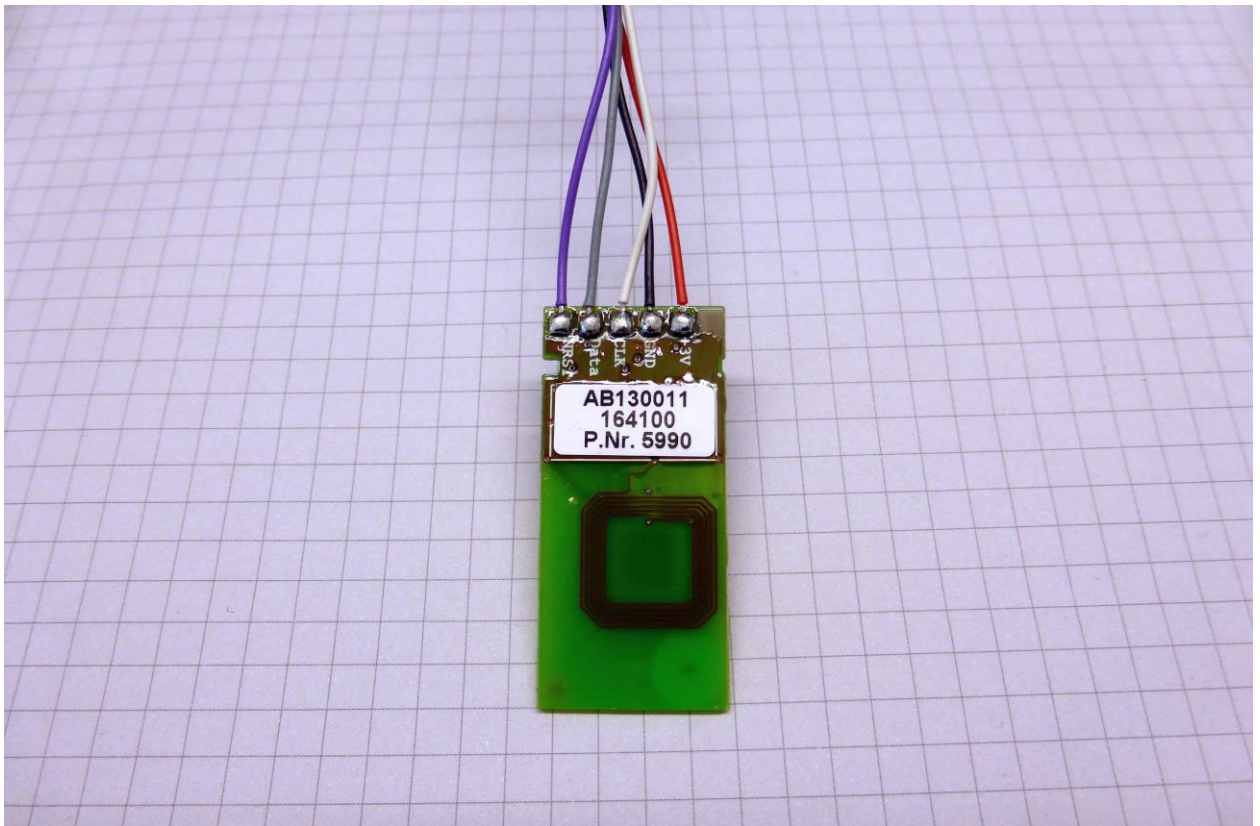
Picture 7: EUT - main PCB removed



Picture 8: EUT - location RFID module



Picture 9: EUT - RFID module top side



Picture 10: EUT - RFID module bottom side