

TEST REPORT

FCC ID: NMTSMS002

Product: Remote control

Model No.: SMS606-R

Additional Model: N/A

Trade Mark: N/A

Report No.: TCT171208E013

Issued Date: November 22, 2017

Issued for:

IDT Technology Limited

**Block C, 9/F, Kaiser Estate, Phase 1, 41 Man Yue Street, Hung Hom, Kowloon,
Hongkong, china**

Issued By:

Shenzhen Tongce Testing Lab.

**1B/F., Building 1, Yibaolai Industrial Park, Qiaotou, Fuyong, Baoan District,
Shenzhen, Guangdong, China**

TEL: +86-755-27673339

FAX: +86-755-27673332

Note: This report shall not be reproduced except in full, without the written approval of Shenzhen Tongce Testing Lab.

This document may be altered or revised by Shenzhen Tongce Testing Lab. personnel only, and shall be noted in the revision section of the document. The test results in the report only apply to the tested sample.

TABLE OF CONTENTS

1. Test Certification 3

2. Test Result Summary 4

3. EUT Description..... 5

4. Genera Information..... 6

 4.1. TEST ENVIRONMENT AND MODE 6

 4.2. DESCRIPTION OF SUPPORT UNITS 6

5. Facilities and Accreditations 7

 5.1. FACILITIES 7

 5.2. LOCATION 7

 5.3. MEASUREMENT UNCERTAINTY 7

6. Test Results and Measurement Data 8

 6.1. ANTENNA REQUIREMENT 8

 6.2. CONDUCTED EMISSION 9

 6.3. RADIATED EMISSION MEASUREMENT..... 13

 6.4. 20dB OCCUPIED BANDWIDTH 22

7. Appendix A: Photographs of Test Setup 25

8. Appendix B: Photographs of EUT 27

1. Test Certification

Product:	Remote control
Model No.:	SMS606-R
Additional Model:	N/A
Trade Mark:	N/A
Applicant:	IDT Technology Limited
Address:	Block C, 9/F, Kaiser Estate, Phase 1, 41 Man Yue Street, Hung Hom, Kowloon, Hongkong, china
Manufacturer:	Shenzhen Zhong ke Heng Wei Electronic Technology Co., Ltd.
Address:	Taihe Road, Pingshan Town, Longgang District, Shenzhen, 44
Date of Test:	November 01, 2017 to November 20, 2017
Applicable Standards:	FCC CFR Title 47 Part 15 Subpart C Section 15.249

The above equipment has been tested by Shenzhen Tongce Testing Lab. and found compliance with the requirements set forth in the technical standards mentioned above. The results of testing in this report apply only to the product/system, which was tested. Other similar equipment will not necessarily produce the same results due to production tolerance and measurement uncertainties.

Tested By:

Garen

Garen

Date:

Nov. 22, 2017

Reviewed By:

Joe Zhou

Joe Zhou

Date:

Nov. 22, 2017

Approved By:

Tomsin

Tomsin

Date:

Nov. 22, 2017



2. Test Result Summary

Requirement	CFR 47 Section	Result
Antenna Requirement	§15.203	PASS
AC Power Line Conducted Emission	§15.207	PASS
Field Strength of Fundamental	§15.249 (a)	PASS
Spurious Emissions	§2.1053 §15.249 (a) (d)/ §15.209	PASS
Band Edge	§2.1053 §15.249 (d)/ §15.205	PASS
20dB Occupied Bandwidth	§2.1049 §15.215 (c)	PASS

Note:

1. Pass: Test item meets the requirement.
2. Fail: Test item does not meet the requirement.
3. N/A: Test case does not apply to the test object.
4. The test result judgment is decided by the limit of test standard.

3. EUT Description

Product:	Remote control
Model No.:	SMS606-R
Additional Model:	N/A
Trade Mark:	N/A
Operation Frequency:	2420MHz - 2478MHz
Number of Channel:	5
Modulation Technology:	GFSK
Antenna Type:	PCB Antenna
Antenna Gain:	-6.93dBi
Power Supply:	Li-Polymer Battery : JT602530P Voltage: 3.7V Capacity: 400mAh Limited Charge Voltage: 4.2V

Operation Frequency Each of Channel

Channel	Frequency
1	2420MHz
2	2435MHz
3	2450MHz
4	2465MHz
5	2478MHz

Note:

In section 15.31(m), regards to the operating frequency range over 10 MHz, the Lowest frequency, the middle frequency, and the highest frequency of channel were selected to perform the test, and the selected channel see below:

Channel	Frequency
The lowest channel	2420MHz
The middle channel	2450MHz
The Highest channel	2478MHz

4. General Information

4.1. Test Environment and Mode

Operating Environment:	
Temperature:	25.0 °C
Humidity:	54 % RH
Atmospheric Pressure:	1010 mbar
Test Mode:	
Engineering mode:	Keep the EUT in continuous transmitting by select channel
<p>The sample was placed (0.8m below 1GHz, 1.5m above 1GHz) above the ground plane of 3m chamber. Measurements in both horizontal and vertical polarities were performed. During the test, each emission was maximized by: having the EUT continuously working, investigated all operating modes, rotated about all 3 axis (X, Y & Z) and considered typical configuration to obtain worst position, manipulating interconnecting cables, rotating the turntable, varying antenna height from 1m to 4m in both horizontal and vertical polarizations. The emissions worst-case are shown in Test Results of the following pages.</p>	

4.2. Description of Support Units

The EUT has been tested as an independent unit together with other necessary accessories or support units. The following support units or accessories were used to form a representative test configuration during the tests.

Item	Equipment	Mfr/Brand	Model/Type No.	Series No.	Note
1	Adapter	lephone	CSGN-LP5V1000-3C-W	/	/
2	USB port	1m USB cable, unshielded	/	/	/

Note:

1. All the equipment/cables were placed in the worst-case configuration to maximize the emission during the test.
2. Grounding was established in accordance with the manufacturer's requirements and conditions for the intended use.

5. Facilities and Accreditations

5.1. Facilities

The test facility is recognized, certified, or accredited by the following organizations:

- FCC - Registration No.: 645098

Shenzhen Tongce Testing Lab

The 3m Semi-anechoic chamber has been registered and fully described in a report with the (FCC) Federal Communications Commission. The acceptance letter from the FCC is maintained in our files.

- IC - Registration No.: 10668A-1

The 3m Semi-anechoic chamber of Shenzhen TCT Testing Technology Co., Ltd. has been registered by Certification and Engineering Bureau of Industry Canada for radio equipment testing

5.2. Location

Shenzhen Tongce Testing Lab

Address: 1B/F., Building 1, Yibaolai Industrial Park, Qiaotou, Fuyong, Baoan District, Shenzhen, Guangdong, China

TEL: +86-755-27673339

5.3. Measurement Uncertainty

The reported uncertainty of measurement $y \pm U$, where expanded uncertainty U is based on a standard uncertainty multiplied by a coverage factor of $k=2$, providing a level of confidence of approximately 95 %.

No.	Item	MU
1	Conducted Emission	$\pm 2.56\text{dB}$
2	RF power, conducted	$\pm 0.12\text{dB}$
3	Spurious emissions, conducted	$\pm 0.11\text{dB}$
4	All emissions, radiated(<1GHz)	$\pm 3.92\text{dB}$
5	All emissions, radiated(>1GHz)	$\pm 4.28\text{dB}$
6	Temperature	$\pm 0.1^\circ\text{C}$
7	Humidity	$\pm 1.0\%$

6. Test Results and Measurement Data

6.1. Antenna Requirement

Standard requirement:

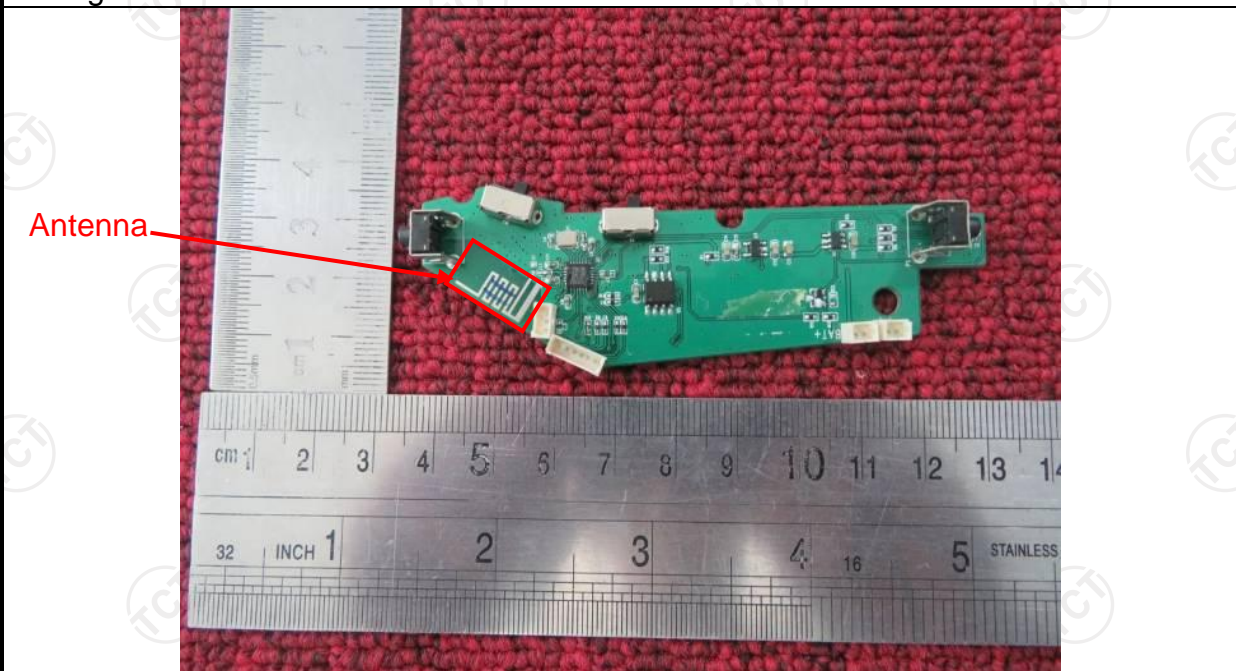
FCC Part15 C Section 15.203

15.203 requirement:

An intentional radiator shall be designed to ensure that no antenna other than that furnished by the responsible party shall be used with the device. The use of a permanently attached antenna or of an antenna that uses a unique coupling to the intentional radiator, the manufacturer may design the unit so that a broken antenna can be replaced by the user, but the use of a standard antenna jack or electrical connector is prohibited.

E.U.T Antenna:

The EUT antenna is an integral antenna which permanently attached, and the best case gain of the antenna is -6.93 dBi.



6.2. Conducted Emission

6.2.1. Test Specification

Test Requirement:	FCC Part15 C Section 15.207														
Test Method:	ANSI C63.10:2013														
Frequency Range:	150 kHz to 30 MHz														
Receiver setup:	RBW=9 kHz, VBW=30 kHz, Sweep time=auto														
Limits:	<table border="1"> <thead> <tr> <th rowspan="2">Frequency range (MHz)</th> <th colspan="2">Limit (dBuV)</th> </tr> <tr> <th>Quasi-peak</th> <th>Average</th> </tr> </thead> <tbody> <tr> <td>0.15-0.5</td> <td>66 to 56*</td> <td>56 to 46*</td> </tr> <tr> <td>0.5-5</td> <td>56</td> <td>46</td> </tr> <tr> <td>5-30</td> <td>60</td> <td>50</td> </tr> </tbody> </table>	Frequency range (MHz)	Limit (dBuV)		Quasi-peak	Average	0.15-0.5	66 to 56*	56 to 46*	0.5-5	56	46	5-30	60	50
Frequency range (MHz)	Limit (dBuV)														
	Quasi-peak	Average													
0.15-0.5	66 to 56*	56 to 46*													
0.5-5	56	46													
5-30	60	50													
Test Setup:	<p><i>Remark</i> E.U.T: Equipment Under Test LISN: Line Impedance Stabilization Network Test table height=0.8m</p>														
Test Mode:	Transmitting mode with modulation														
Test Procedure:	<ol style="list-style-type: none"> 1. The E.U.T and simulators are connected to the main power through a line impedance stabilization network (L.I.S.N.). This provides a 50ohm/50uH coupling impedance for the measuring equipment. 2. The peripheral devices are also connected to the main power through a LISN that provides a 50ohm/50uH coupling impedance with 50ohm termination. (Please refer to the block diagram of the test setup and photographs). 3. Both sides of A.C. line are checked for maximum conducted interference. In order to find the maximum emission, the relative positions of equipment and all of the interface cables must be changed according to ANSI C63.10:2013 on conducted measurement. 														
Test Result:	PASS														

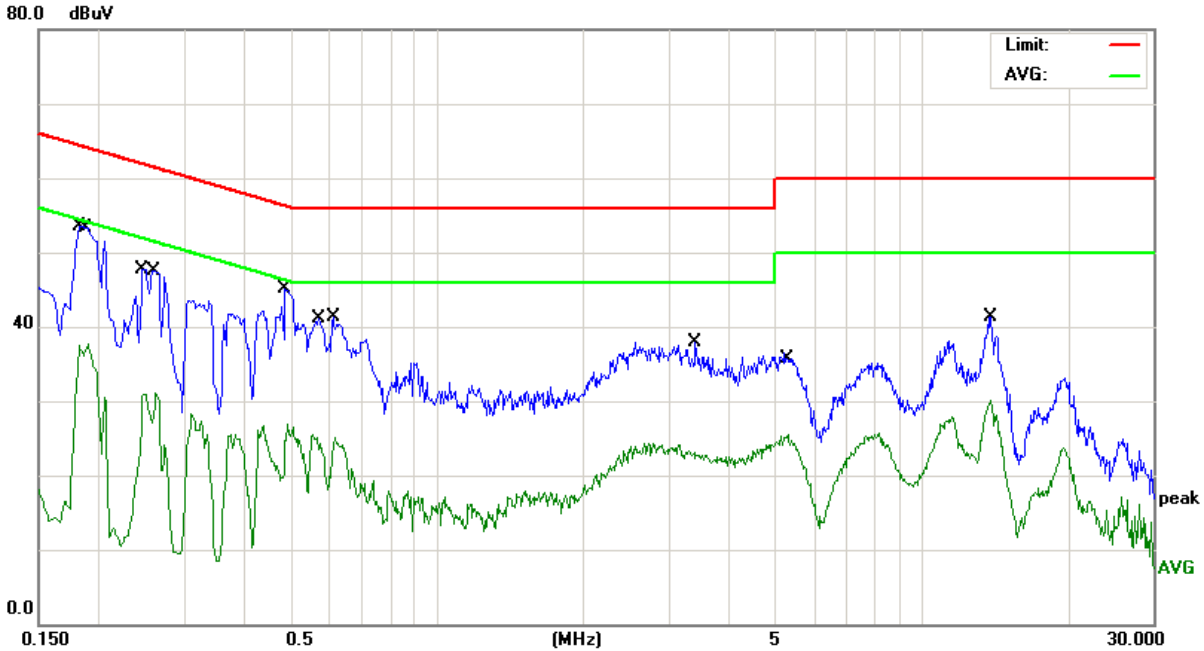
6.2.2. Test Instruments

Conducted Emission Shielding Room Test Site (843)				
Equipment	Manufacturer	Model	Serial Number	Calibration Due
Test Receiver	R&S	ESPI	101401	Jun. 12, 2018
LISN	Schwarzbeck	NSLK 8126	8126453	Sep. 27, 2018
Coax cable (9KHz-30MHz)	TCT	CE-05	N/A	Sep. 27, 2018
EMI Test Software	Shurple Technology	EZ-EMC	N/A	N/A

Note: The calibration interval of the above test instruments is 12 months and the calibrations are traceable to international system unit (SI).

6.2.3. Test data

Please refer to following diagram for individual Conducted Emission on Line Terminal of the power line (150 kHz to 30MHz)

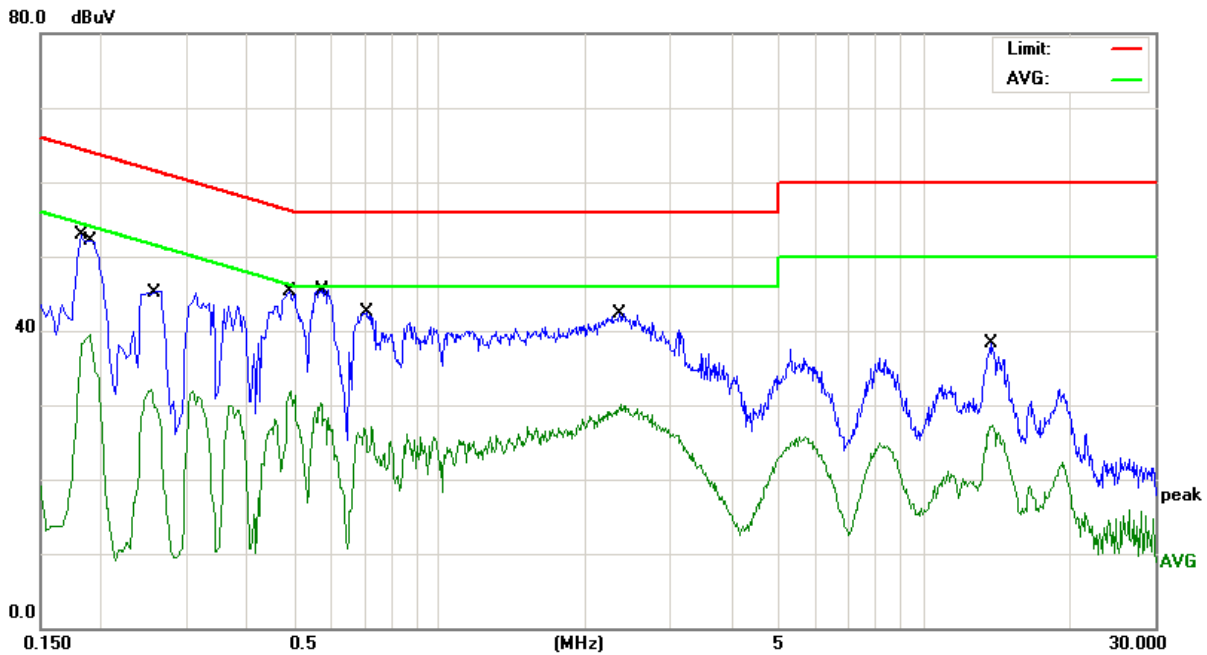


No.	Mk.	Freq. MHz	Reading Level dBuV	Correct Factor dB	Measure- ment dBuV	Limit dBuV	Over dB	Detector
1	*	0.1819	43.11	10.44	53.55	64.39	-10.84	QP
2		0.1900	27.17	10.44	37.61	54.03	-16.42	AVG
3		0.2460	37.28	10.43	47.71	61.89	-14.18	QP
4		0.2620	20.72	10.43	31.15	51.36	-20.21	AVG
5		0.4860	34.62	10.40	45.02	56.24	-11.22	QP
6		0.4900	16.41	10.40	26.81	46.17	-19.36	AVG
7		0.5660	14.68	10.39	25.07	46.00	-20.93	AVG
8		0.6100	30.88	10.39	41.27	56.00	-14.73	QP
9		3.4020	27.63	10.26	37.89	56.00	-18.11	QP
10		5.2940	15.30	10.23	25.53	50.00	-24.47	AVG
11		13.8860	31.21	10.16	41.37	60.00	-18.63	QP
12		13.8860	19.96	10.16	30.12	50.00	-19.88	AVG

Notes:

1. An initial pre-scan was performed on the line and neutral lines with peak detector.
2. Quasi-Peak and Average measurement were performed at the frequencies with maximized peak emission.
3. Final Level = Receiver Read level + LISN Factor + Cable Loss
4. If the average limit is met when using a quasi-peak detector receiver, the EUT shall be deemed to meet both limits and measurement with the average detector receiver is unnecessary.

Conducted Emission on Neutral Terminal of the power line (150 kHz to 30MHz)



No.	Mk.	Freq. MHz	Reading Level dBuV	Correct Factor dB	Measure- ment dBuV	Limit dBuV	Over dB	Detector
1		0.1819	42.50	10.44	52.94	64.39	-11.45	QP
2		0.1900	29.15	10.44	39.59	54.03	-14.44	AVG
3		0.2540	21.64	10.43	32.07	51.62	-19.55	AVG
4		0.4900	34.81	10.40	45.21	56.17	-10.96	QP
5		0.4940	21.46	10.40	31.86	46.10	-14.24	AVG
6		0.5700	19.81	10.39	30.20	46.00	-15.80	AVG
7	*	0.5740	35.20	10.39	45.59	56.00	-10.41	QP
8		0.7060	32.03	10.38	42.41	56.00	-13.59	QP
9		2.3580	32.03	10.28	42.31	56.00	-13.69	QP
10		2.3699	19.81	10.28	30.09	56.00	-25.91	QP
11		13.7539	28.16	10.16	38.32	60.00	-21.68	QP
12		13.8619	17.16	10.16	27.32	50.00	-22.68	AVG

Notes:

1. An initial pre-scan was performed on the line and neutral lines with peak detector.
2. Quasi-Peak and Average measurement were performed at the frequencies with maximized peak emission.
3. Final Level = Receiver Read level + LISN Factor + Cable Loss
4. If the average limit is met when using a quasi-peak detector receiver, the EUT shall be deemed to meet both limits and measurement with the average detector receiver is unnecessary.

6.3. Radiated Emission Measurement

6.3.1. Test Specification

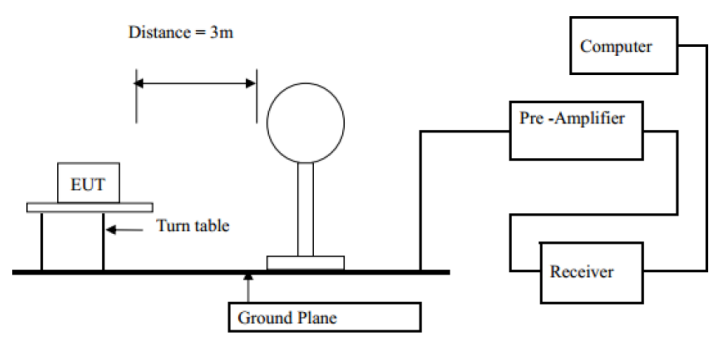
Test Requirement:	FCC Part15 C Section 15.209/ Part 2 J Section 2.1053				
Test Method:	ANSI C63.10:2013				
Frequency Range:	9 kHz to 25 GHz				
Measurement Distance:	3 m				
Antenna Polarization:	Horizontal & Vertical				
Receiver Setup:	Frequency	Detector	RBW	VBW	Remark
	9kHz- 150kHz	Quasi-peak	200Hz	1kHz	Quasi-peak Value
	150kHz-30MHz	Quasi-peak	9kHz	30kHz	Quasi-peak Value
	30MHz-1GHz	Quasi-peak	120kHz	300kHz	Quasi-peak Value
	Above 1GHz	Peak	1MHz	3MHz	Peak Value
Peak		1MHz	10Hz	Average Value	
Limit(Field strength of the fundamental signal):	Frequency	Limit (dBuV/m @3m)		Remark	
	2400MHz-2483.5MHz	94.00		Average Value	
		114.00		Peak Value	
Limit(Spurious Emissions):	Frequency	Limit (dBuV/m @3m)		Remark	
	0.009-0.490	2400/F(KHz)		Quasi-peak Value	
	0.490-1.705	24000/F(KHz)		Quasi-peak Value	
	1.705-30	30		Quasi-peak Value	
	30MHz-88MHz	40.0		Quasi-peak Value	
	88MHz-216MHz	43.5		Quasi-peak Value	
	216MHz-960MHz	46.0		Quasi-peak Value	
	960MHz-1GHz	54.0		Quasi-peak Value	
	Above 1GHz	54.0		Average Value	
74.0		Peak Value			
Limit (band edge) :	Emissions radiated outside of the specified frequency bands, except for harmonics, shall be attenuated by at least 50 dB below the level of the fundamental or to the general radiated emission limits in Section 15.209, whichever is the lesser attenuation.				
Test Procedure:	<ol style="list-style-type: none"> 1. The EUT was placed on the top of a rotating table 0.8 meters above the ground at a 3 meter chamber in below 1GHz, 1.5m above the ground in above 1GHz. The table was rotated 360 degrees to determine the position of the highest radiation. 2. The EUT was set 3 meters away from the interference-receiving antenna, which was mounted on the top of a variable-height antenna tower. 3. The antenna height is varied from one meter to four meters above the ground to determine the maximum value of the field strength. Both horizontal and 				



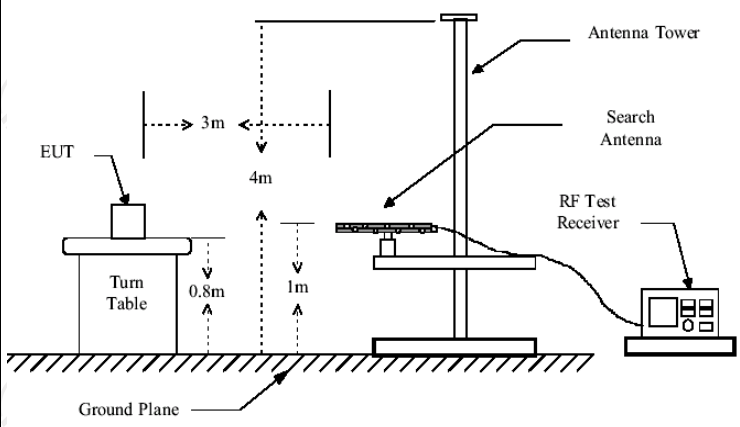
Test setup:

- vertical polarizations of the antenna are set to make the measurement.
4. For each suspected emission, the EUT was arranged to its worst case and then the antenna was tuned to heights from 1 meter to 4 meters and the rotatable table was turned from 0 degrees to 360 degrees to find the maximum reading.
 5. The test-receiver system was set to Peak Detect Function and Specified Bandwidth with Maximum Hold Mode.
 6. If the emission level of the EUT in peak mode was 10dB lower than the limit specified, then testing could be stopped and the peak values of the EUT would be reported. Otherwise the emissions that did not have 10dB margin would be re-tested one by one using peak, quasi-peak or average method as specified and then reported in a data sheet.

For radiated emissions below 30MHz

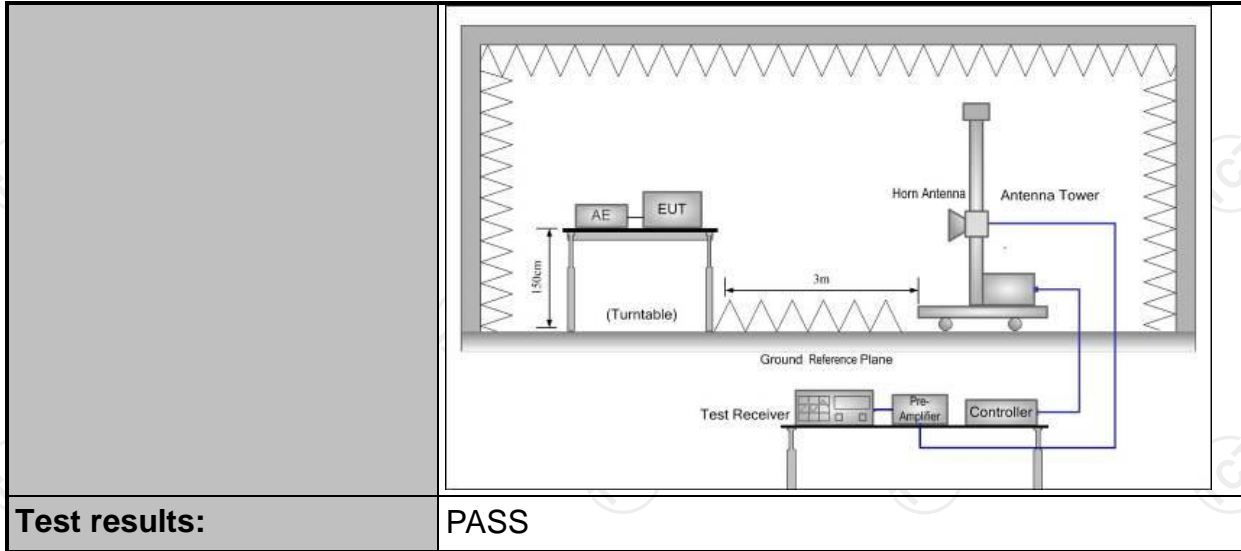


30MHz to 1GHz



Above 1GHz

(The diagram below shows the test setup that is utilized to make the measurements for emission from 1GHz to the tenth harmonic of the highest fundamental frequency or to 40GHz emissions, whichever is lower.)



Test results:

PASS



6.3.2. Test Instruments

Radiated Emission Test Site (966)				
Name of Equipment	Manufacturer	Model	Serial Number	Calibration Due
Test Receiver	ROHDE&SCHW ARZ	ESVD	100008	Sep. 27, 2018
Spectrum Analyzer	ROHDE&SCHW ARZ	FSQ	200061	Sep. 27, 2018
Pre-amplifier	EM Electronics Corporation CO.,LTD	EM30265	07032613	Sep. 27, 2018
Pre-amplifier	HP	8447D	2727A05017	Sep. 27, 2018
Loop antenna	ZHINAN	ZN30900A	12024	Sep. 27, 2018
Broadband Antenna	Schwarzbeck	VULB9163	340	Sep. 27, 2018
Horn Antenna	Schwarzbeck	BBHA 9120D	631	Sep. 27, 2018
Horn Antenna	Schwarzbeck	BBH 9170	582	Jun. 07, 2018
Antenna Mast	Keleto	CC-A-4M	N/A	N/A
Coax cable (9KHz-1GHz)	TCT	RE-low-01	N/A	Sep. 27, 2018
Coax cable (9KHz-40GHz)	TCT	RE-high-02	N/A	Sep. 27, 2018
Coax cable (9KHz-1GHz)	TCT	RE-low-03	N/A	Sep. 27, 2018
Coax cable (9KHz-40GHz)	TCT	RE-high-04	N/A	Sep. 27, 2018
EMI Test Software	Shurple Technology	EZ-EMC	N/A	N/A

Note: The calibration interval of the above test instruments is 12 months and the calibrations are traceable to international system unit (SI).

6.3.3. Test Data

Field Strength of Fundamental

Frequency (MHz)	Emission PK/AV (dBuV/m)	Horizontal /Vertical	Limits PK/AV (dBuV/m)	Margin (dB)
2420	95.14	H	114	-18.86
2420	90.40	H	94	-3.6
2450	93.08	H	114	-20.92
2450	91.04	H	94	-2.96
2478	94.89	H	114	-19.11
2478	92.23	H	94	-1.77
2420	95.68	V	114	-18.32
2420	91.25	V	94	-2.75
2450	93.24	V	114	-20.76
2450	92.59	V	94	-1.41
2478	93.74	V	114	-20.26
2478	90.15	V	94	-3.85

Spurious Emissions

Frequency Range (9 kHz-30MHz)

Frequency (MHz)	Level@3m (dBμV/m)	Limit@3m (dBμV/m)
--	--	--
--	--	--
--	--	--
--	--	--

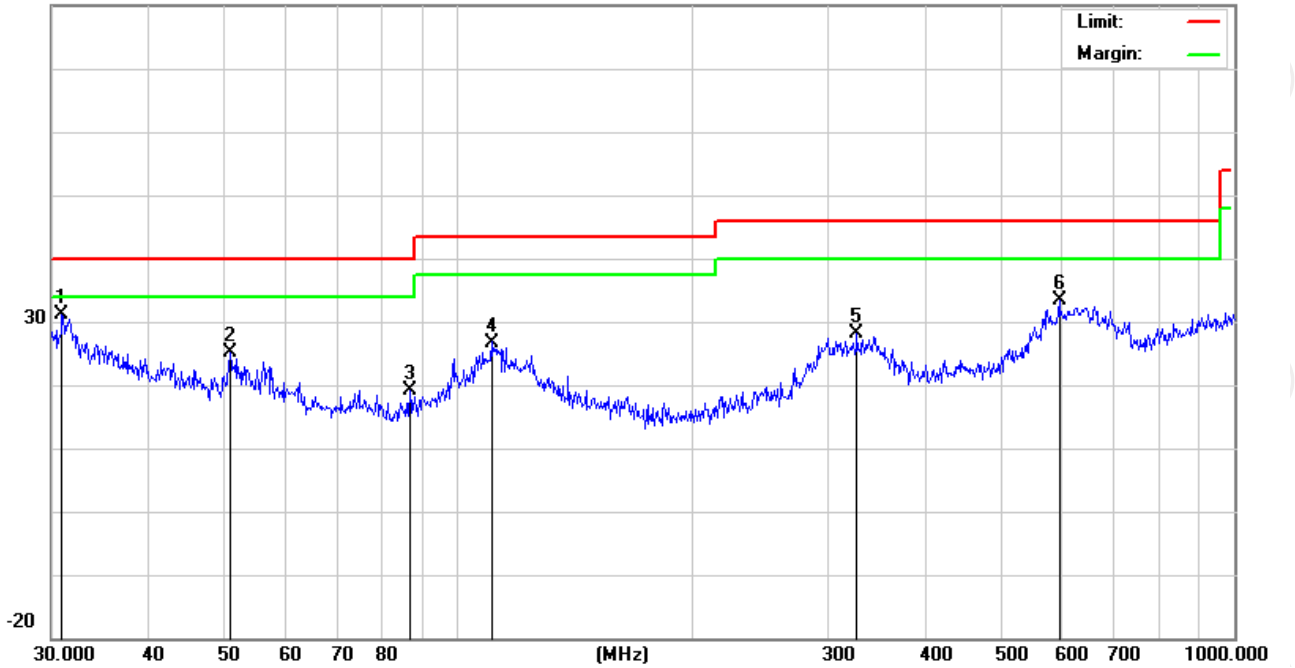
Note: 1. Emission Level=Reading+ Cable loss-Antenna factor-Amp factor

2. The emission levels are 20 dB below the limit value, which are not reported. It is deemed to comply with the requirement

Frequency Range (30MHz-1GHz)

Horizontal:

80.0 dBuV/m

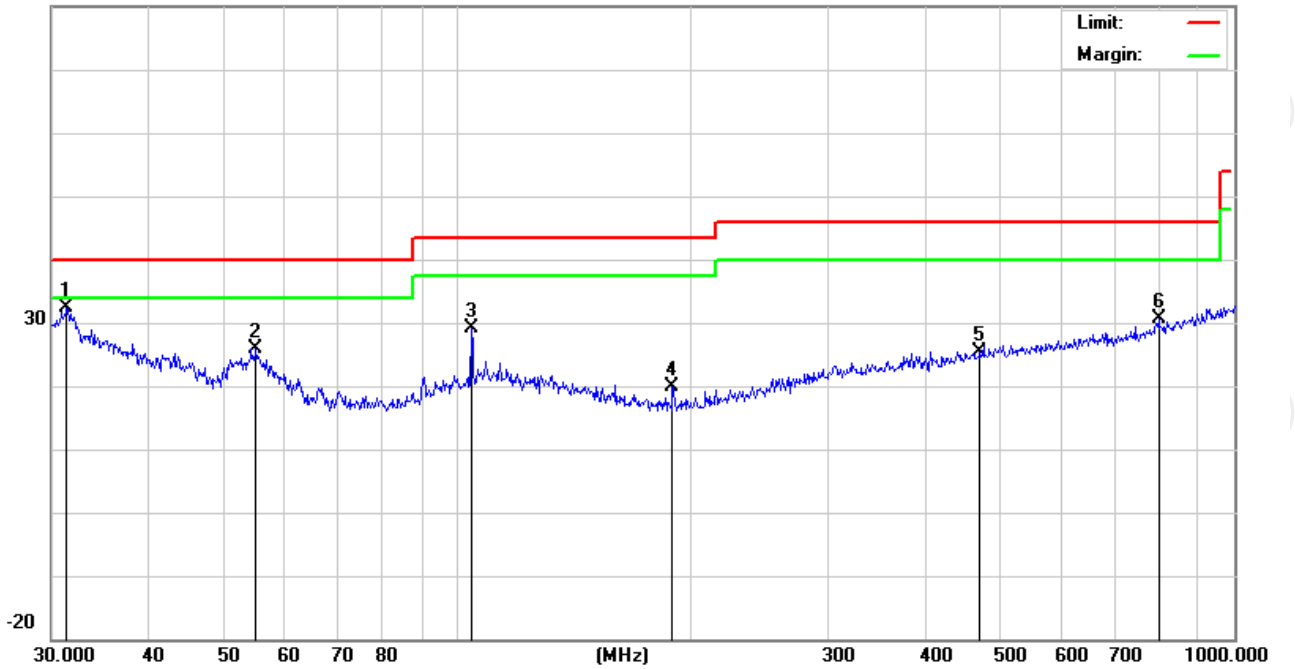


No.	Mk.	Freq. MHz	Reading Level dBuV	Correct Factor dB	Measure- ment dBuV/m	Limit dBuV/m	Over dB	Detector
1	*	30.9619	26.80	4.43	31.23	40.00	-8.77	QP
2		50.9420	30.20	-5.13	25.07	40.00	-14.93	QP
3		86.8068	25.57	-6.32	19.25	40.00	-20.75	QP
4		110.5687	28.67	-1.92	26.75	43.50	-16.75	QP
5		326.7395	30.24	-2.05	28.19	46.00	-17.81	QP
6		595.1329	32.62	0.88	33.50	46.00	-12.50	QP



Vertical:

80.0 dBuV/m



No.	Mk.	Freq. MHz	Reading Level dBuV	Correct Factor dB	Measure- ment dBuV/m	Limit dBuV/m	Over dB	Detector
1	*	31.3992	28.06	4.26	32.32	40.00	-7.68	QP
2		55.0274	31.56	-5.62	25.94	40.00	-14.06	QP
3		104.1701	32.22	-3.01	29.21	43.50	-14.29	QP
4		189.0743	27.10	-7.18	19.92	43.50	-23.58	QP
5		470.5232	25.41	0.09	25.50	46.00	-20.50	QP
6		798.9797	26.51	4.08	30.59	46.00	-15.41	QP

Note: Measurements were conducted in all channels (high, middle, low), and the worst case (low channel) was submitted only.

Above 1GHz

Frequency	Reading	Correct Factor	Emission Level	Limit	Margin	Polar	Detector
(MHz)	(dBuV/m)	dB/m	(dBuV/m)	(dBuV/m)	(dB)	H/V	
Low Channel-2420MHz							
4840	57.82	-1.29	56.53	74	-17.47	H	PK
4840	40.87	-1.29	39.58	54	-14.42	H	AV
7260	47.69	6.51	54.20	74	-19.80	H	PK
7260	31.35	6.51	37.86	54	-16.14	H	AV
4840	58.71	-1.29	57.42	74	-16.58	V	PK
4840	40.65	-1.29	39.36	54	-14.64	V	AV
7260	44.47	6.51	50.98	74	-23.02	V	PK
7260	31.56	6.51	38.07	54	-15.93	V	AV
Middle Channel-2450MHz							
4900	61.91	-0.98	60.93	74	-13.07	H	PK
4900	43.43	-0.98	42.45	54	-11.55	H	AV
7350	42.75	6.83	49.58	74	-24.42	H	PK
7350	30.12	6.83	36.95	54	-17.05	H	AV
4900	56.91	-0.98	55.93	74	-18.07	V	PK
4900	43.80	-0.98	42.82	54	-11.18	V	AV
7350	44.92	6.83	51.75	74	-22.25	V	PK
7350	33.08	6.83	39.91	54	-14.09	V	AV
High Channel-2478MHz							
4956	57.24	-0.8	56.44	74	-17.56	H	PK
4956	42.58	-0.8	41.78	54	-12.22	H	AV
7434	45.80	6.94	52.74	74	-21.26	H	PK
7434	29.20	6.94	36.14	54	-17.86	H	AV
4956	59.08	-0.8	58.28	74	-15.72	V	PK
4956	44.33	-0.8	43.53	54	-10.47	V	AV
7434	46.33	6.94	53.27	74	-20.73	V	PK
7434	31.35	6.94	38.29	54	-15.71	V	AV

Note:

1. All emissions not reported were more than 20dB below the specified limit or in the noise floor.
2. Emission Level= Reading Level+Probe Factor +Cable Loss.
3. Data of measurement within this frequency range shown "--" in the table above means the reading of emissions are attenuated more than 20dB below the permissible limits or the field strength is too small to be measured.

Band Edge Requirement

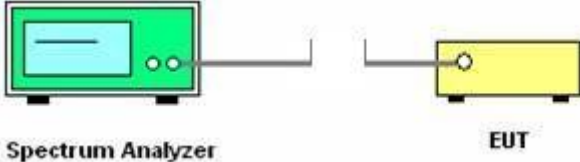
Frequency	Reading	Correct Factor	Emission Level	Limit	Margin	Polar	Detector
(MHz)	(dBuV/m)	dB/m	(dBuV/m)	(dBuV/m)	(dB)	H/V	
Low Channel-2420MHz							
2390	66.08	-8.73	57.35	74	-16.65	H	PK
2390	48.06	-8.73	39.33	54	-14.67	H	AV
2390	68.11	-8.73	59.38	74	-14.62	V	PK
2390	46.92	-8.73	38.19	54	-15.81	V	AV
High Channel-2478MHz							
2483.5	68.85	-8.17	60.68	74	-13.32	H	PK
2483.5	46.10	-8.17	37.93	54	-16.07	H	AV
2483.5	67.30	-8.17	59.13	74	-14.87	V	PK
2483.5	47.60	-8.17	39.43	54	-14.57	V	AV

Note:

1. All emissions not reported were more than 20dB below the specified limit or in the noise floor.
2. Emission Level= Reading Level+Probe Factor +Cable Loss.
3. Data of measurement within this frequency range shown "--" in the table above means the reading of emissions are attenuated more than 20dB below the permissible limits or the field strength is too small to be measured.

6.4.20dB Occupied Bandwidth

6.4.1. Test Specification

Test Requirement:	FCC Part15 C Section 15.215(c)/ Part 2 J Section 2.1049
Test Method:	ANSI C63.10: 2013
Limit:	N/A
	<ol style="list-style-type: none"> 1. According to the follow Test-setup, keep the relative position between the artificial antenna and the EUT. 2. Set to the maximum power setting and enable the EUT transmit continuously. 3. Use the following spectrum analyzer settings for 20dB Bandwidth measurement. Span = approximately 2 to 3 times the 20 dB bandwidth, centered on a hopping channel; RBW\geq1% of the 20 dB bandwidth; VBW\geqRBW; Sweep = auto; Detector function = peak; Trace = max hold. 4. Measure and record the results in the test report.
Test setup:	 <p>The diagram illustrates the test setup. On the left is a green Spectrum Analyzer with a screen and two knobs. A cable connects it to a yellow rectangular box on the right labeled 'EUT'.</p>
Test Mode:	Transmitting mode with modulation
Test results:	PASS

6.4.2. Test Instruments

RF Test Room				
Equipment	Manufacturer	Model	Serial Number	Calibration Due
Spectrum Analyzer	R&S	FSU	200054	Oct. 13, 2018

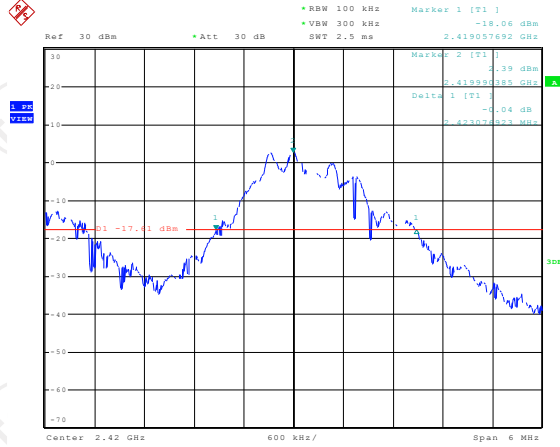
Note: The calibration interval of the above test instruments is 12 months and the calibrations are traceable to international system unit (SI).

6.4.3. Test data

Test Channel	20dB Occupy Bandwidth (kHz)	Conclusion
Lowest	2423	PASS
Middle	2365	PASS
Highest	2212	PASS

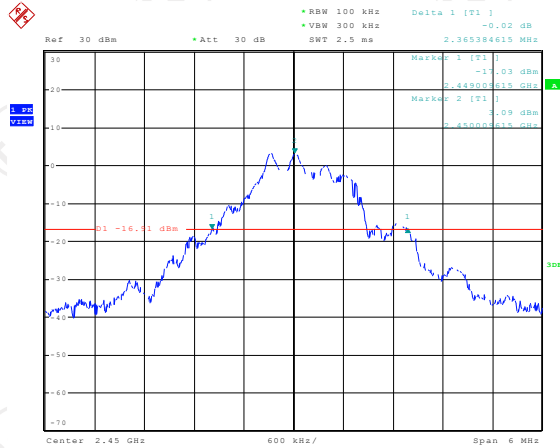
Test plots as follows:

Lowest channel



Date: 20.NOV.2017 16:42:42

Middle channel



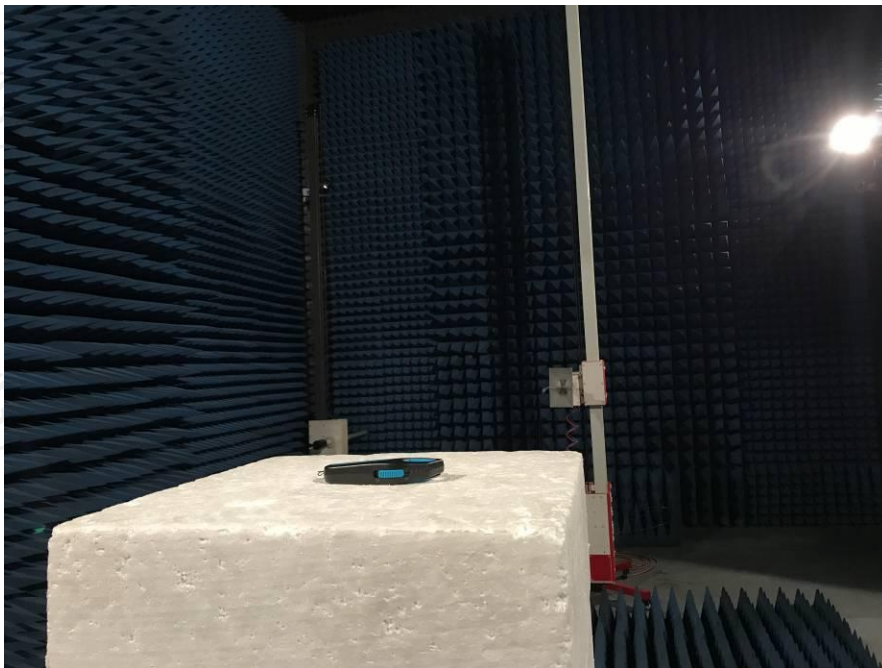
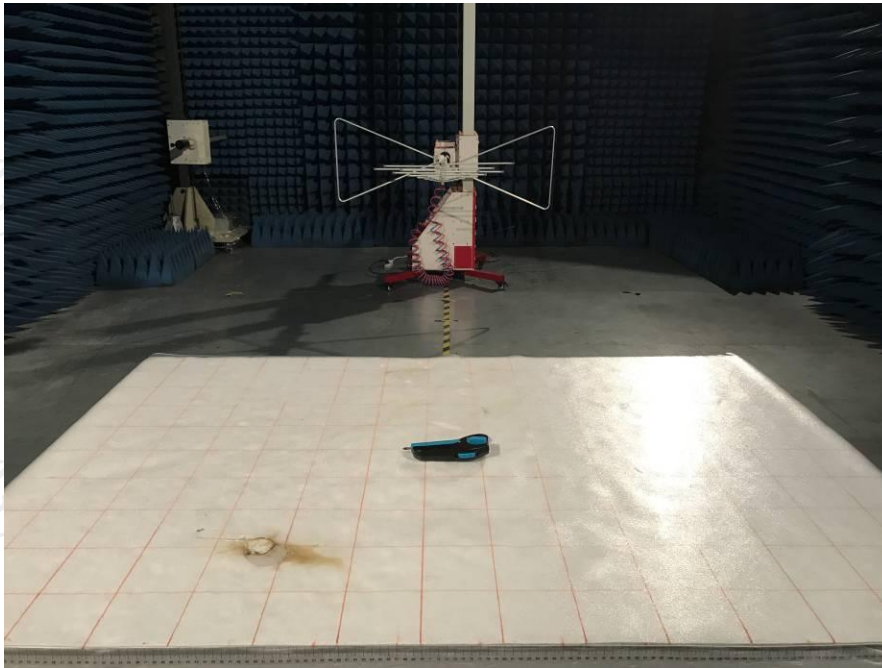
Date: 20.NOV.2017 16:47:04

Highest channel



Date: 20.NOV.2017 16:54:57

7. Appendix A: Photographs of Test Setup



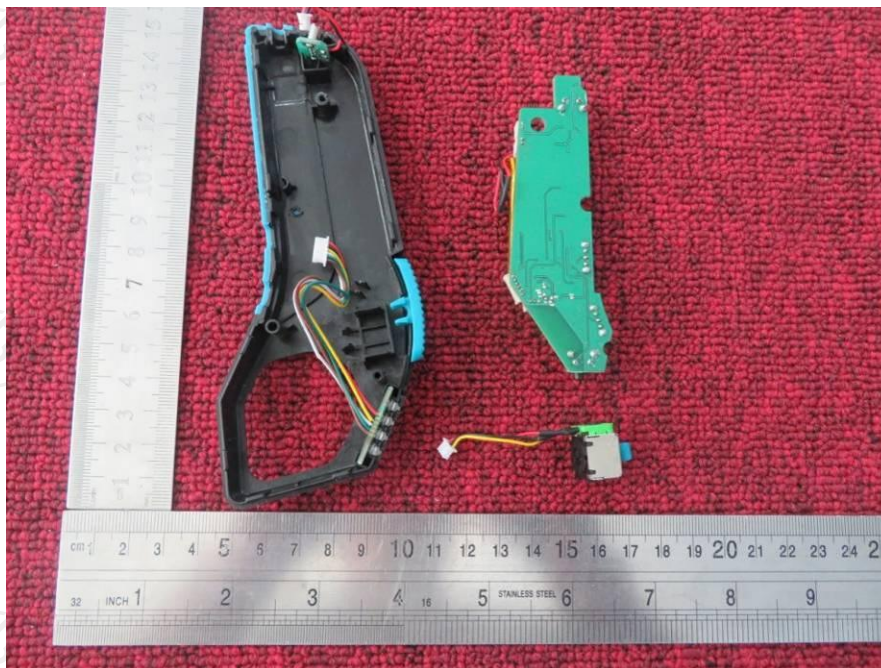


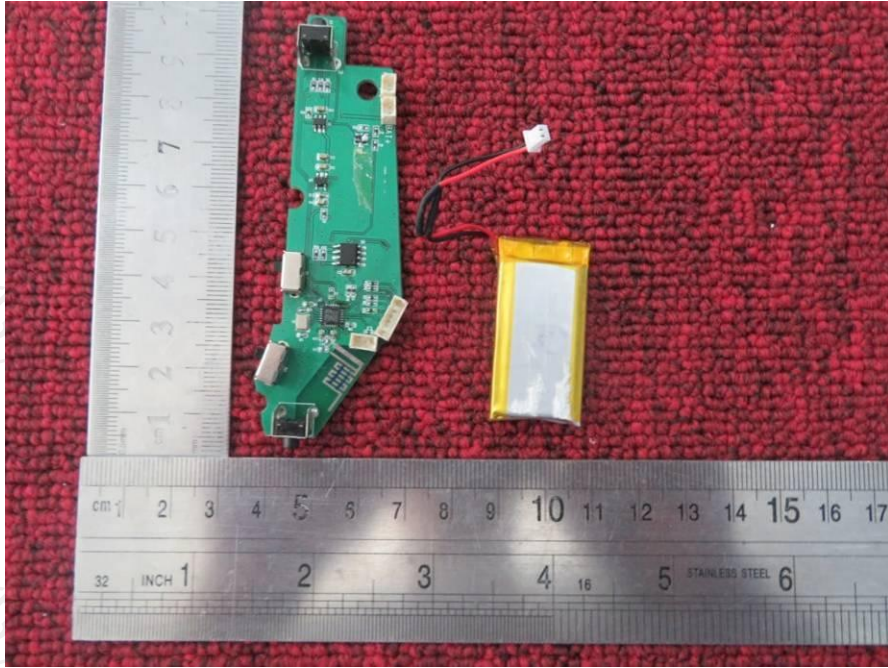
8. Appendix B: Photographs of EUT

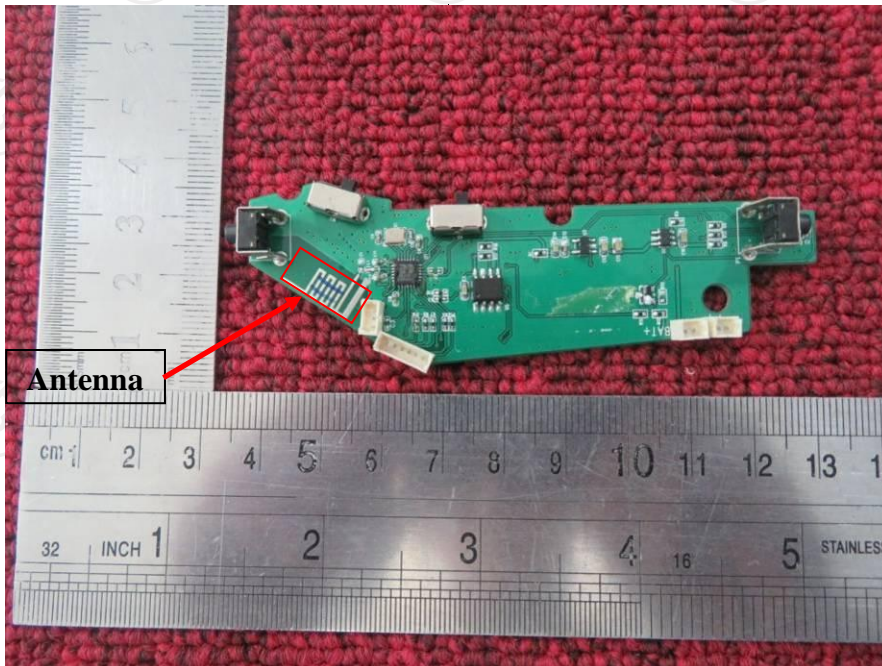
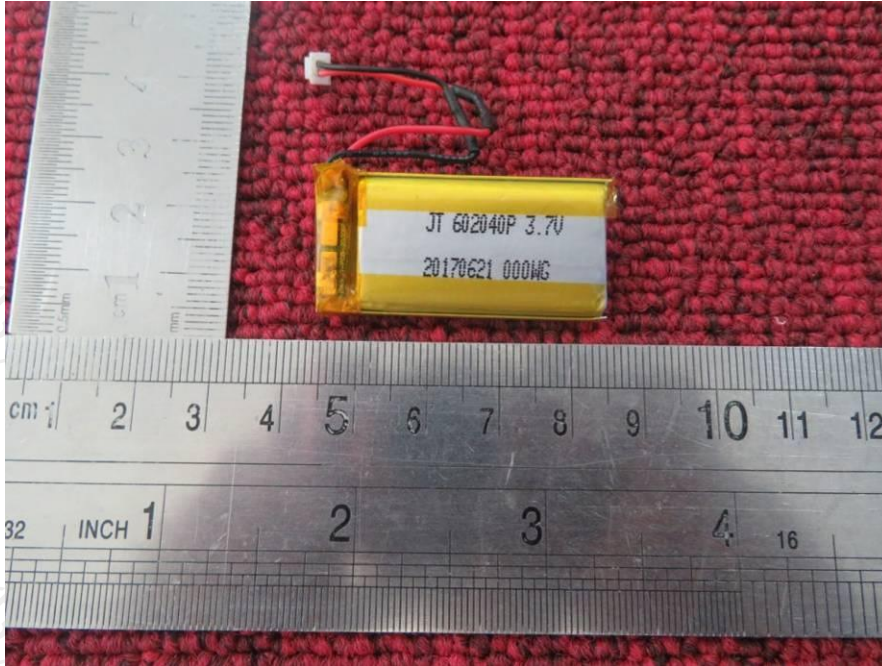


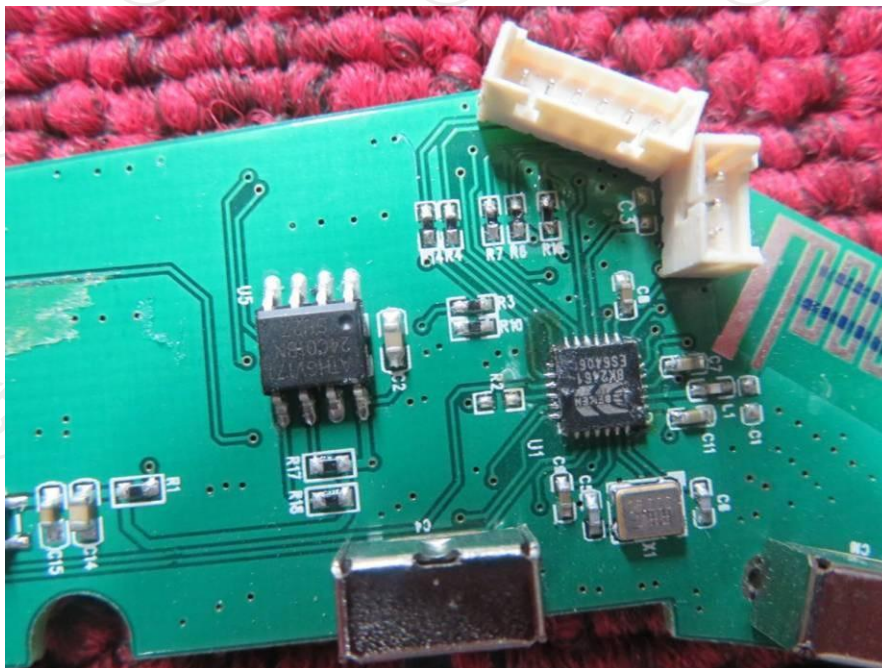












*******END OF REPORT*******