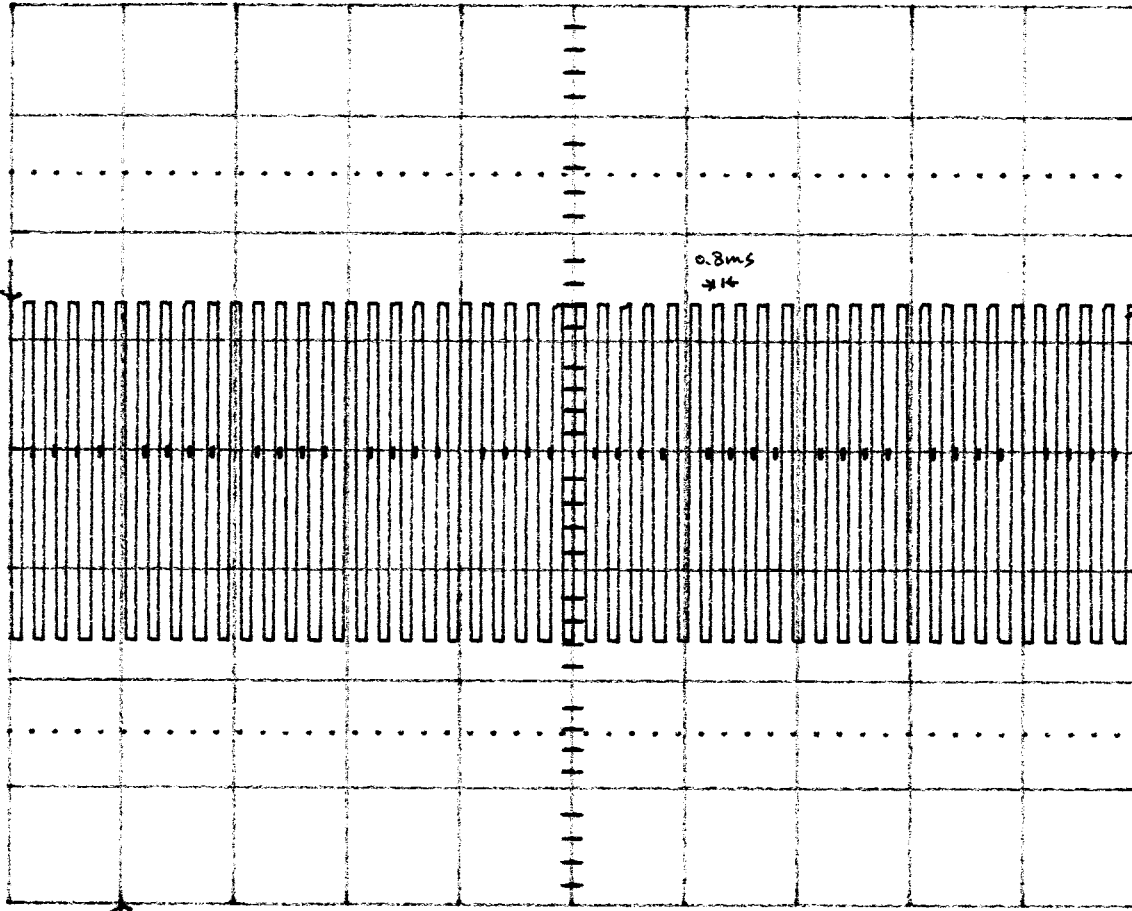


16-Jun-09
16:53:45

A-M1
10 ms
1.00 V
-31mV



$$D.C = \frac{0.8 \times 49}{100} \\ = 0.392$$

$$D.F = -8.1 \text{ dB}$$

1 s

1 1 V DC

Δt 100.00 ms $\frac{1}{\Delta t}$ 10.000 Hz

2 .1 V AC



1 DC -0.41 V

STOPPED

hp

REF 97.0 dB μ V

AT 10 dB

MKR 4.0000 sec

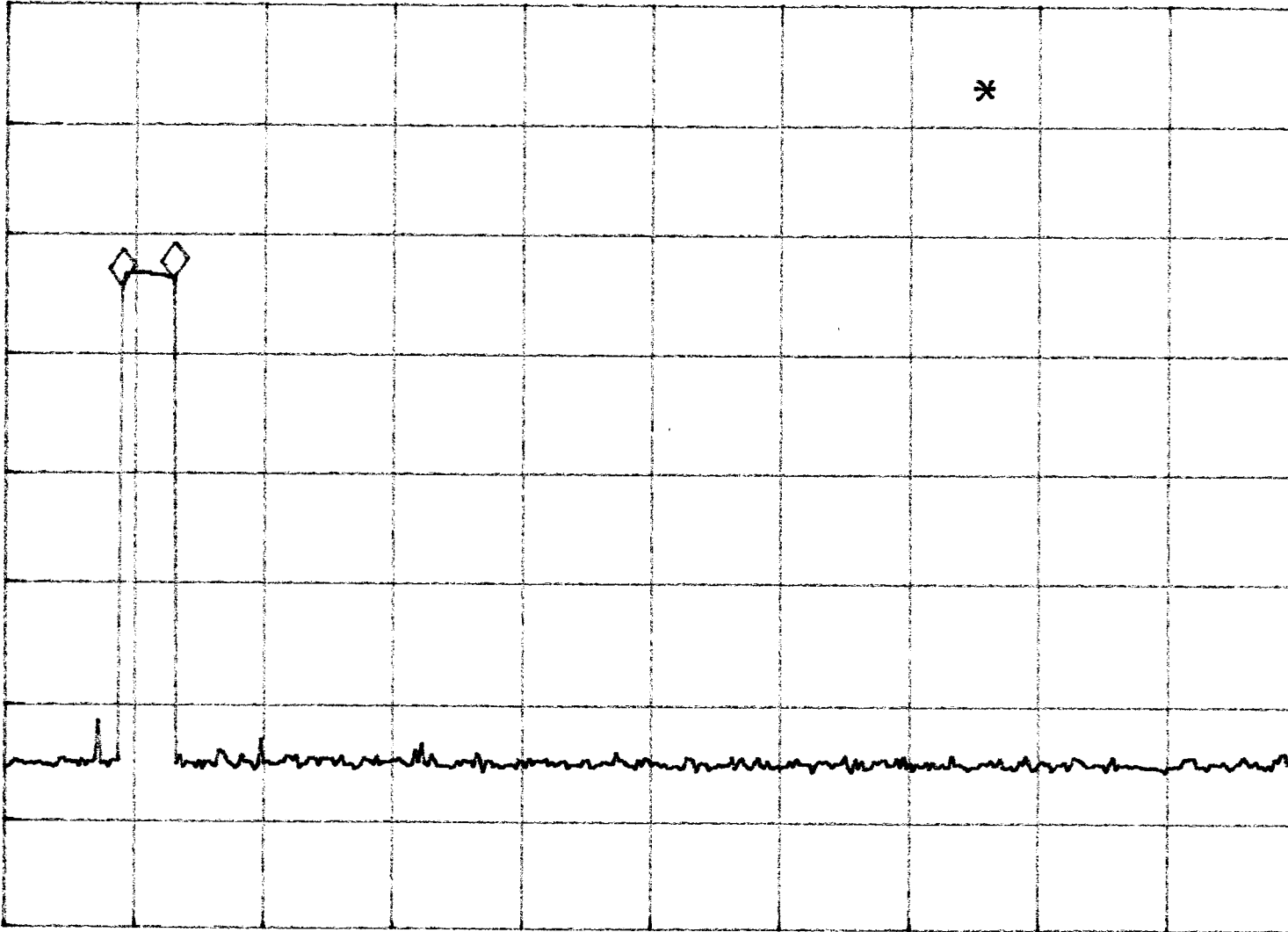
.64 dB

PEAK

LOG

10

dB/



VA SB

SC FC

CORR

CENTER 433.606 MHz

SPAN 0 Hz

#RES BW 100 kHz

#VBW 3 MHz

#SWP 100 sec