

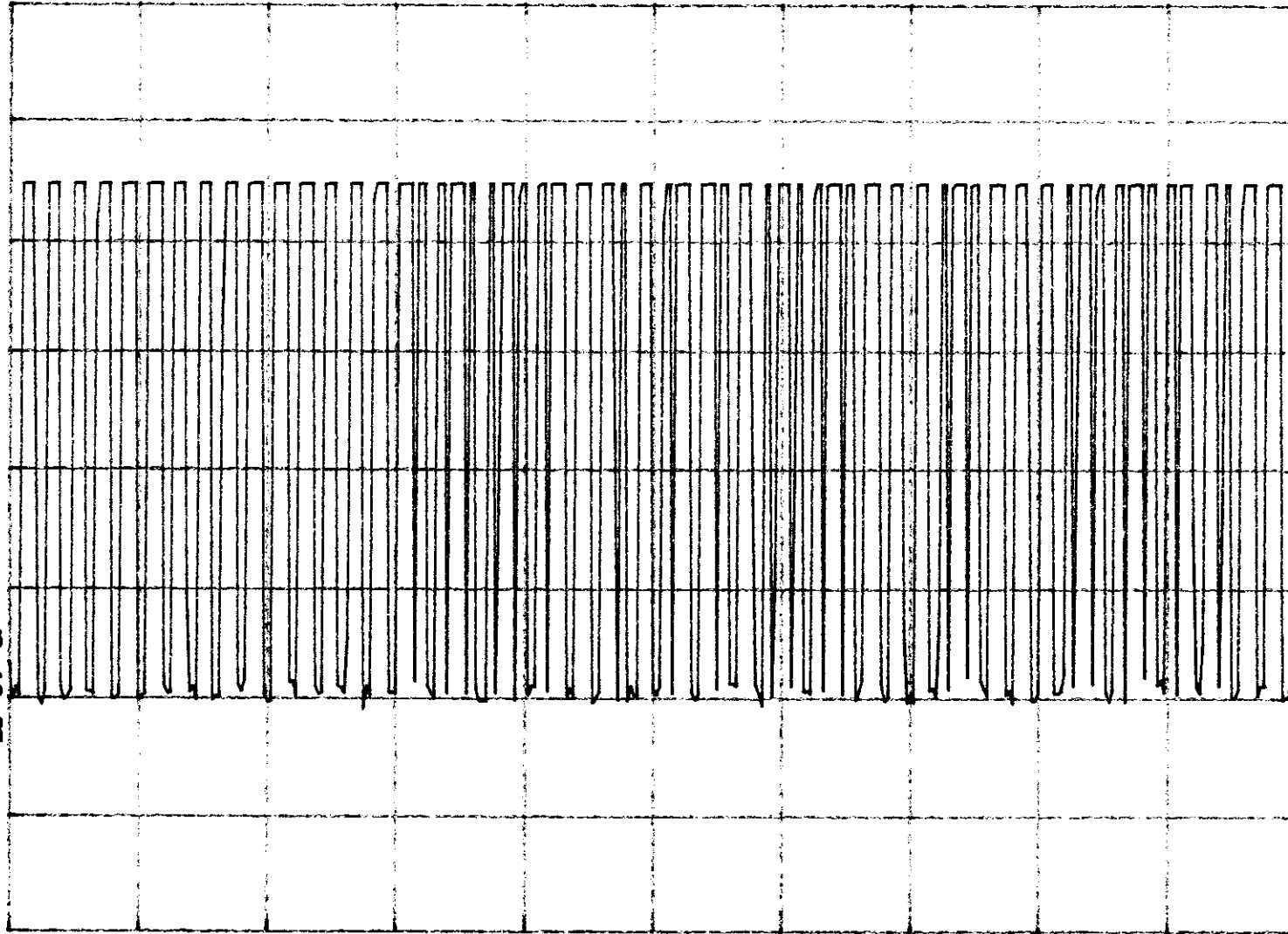
~~hp~~

REF 107.0 dBμV AT 10 dB

PEAK
LOG
10
dB/

$$\text{Average Factor} = \frac{42 \times 0.9 + 20 \times 0.45}{100} = 0.468 \text{ or } -6.5 \text{ dB}$$

VA SB
SC VS
CORR



CENTER 433.920 MHz

SPAN 0 Hz

#RES BW 3.0 MHz

#VBW 3 MHz

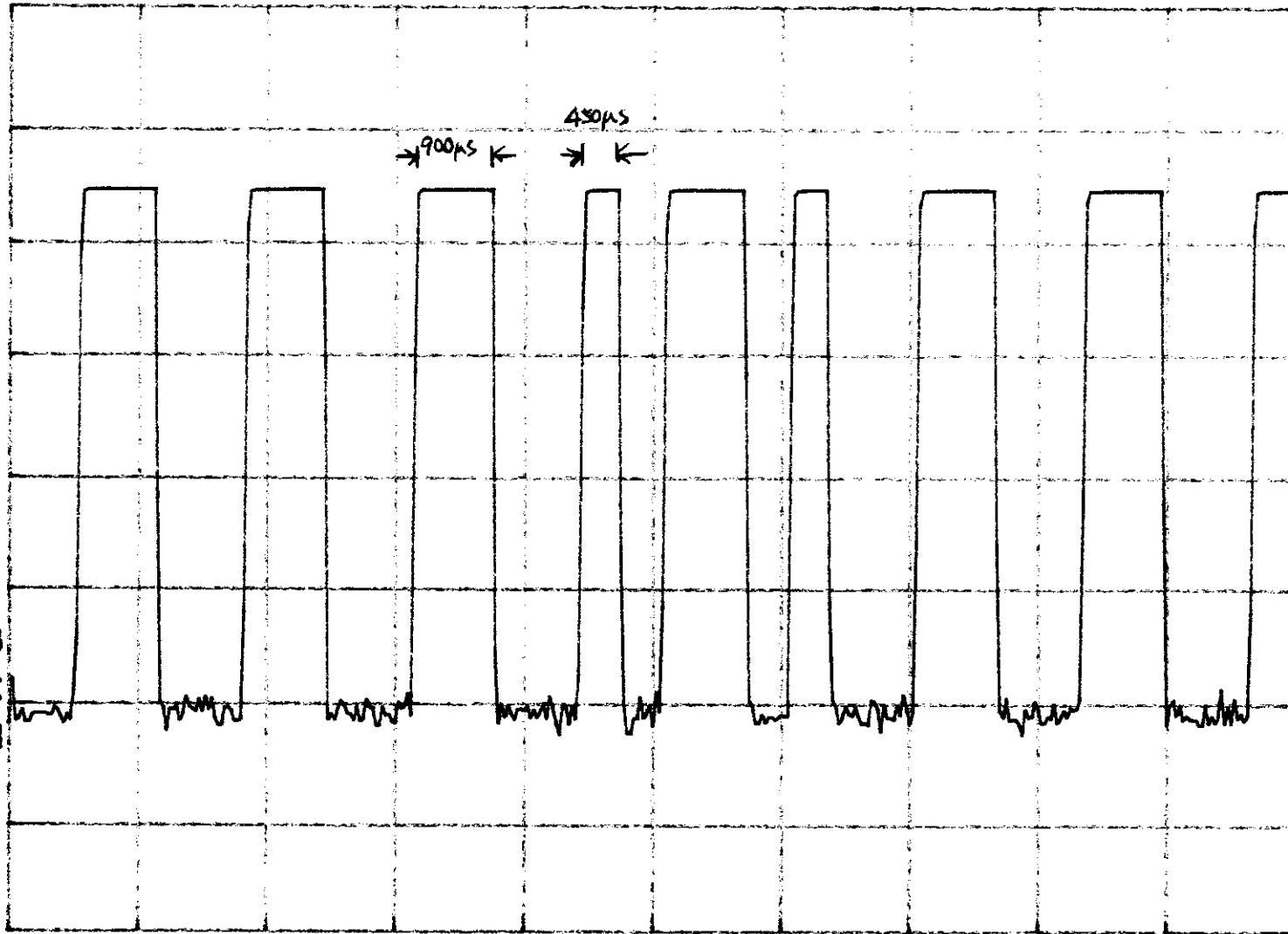
#SWP 100 msec

117

REF 107.0 dB μ V AT 10 dB

PEAK
LOG
10
dB/

VA SB
SC VC
CORR



CENTER 433.920 MHz

#RES BW 3.0 MHz

#VBW 3 MHz

SPAN 0 Hz

#SWP 15.0 msec

Fig

REF 107.0 dB μ V

AT 10 dB

MARK 360.00 msec

99.56 dB μ V

PEAK

LOG

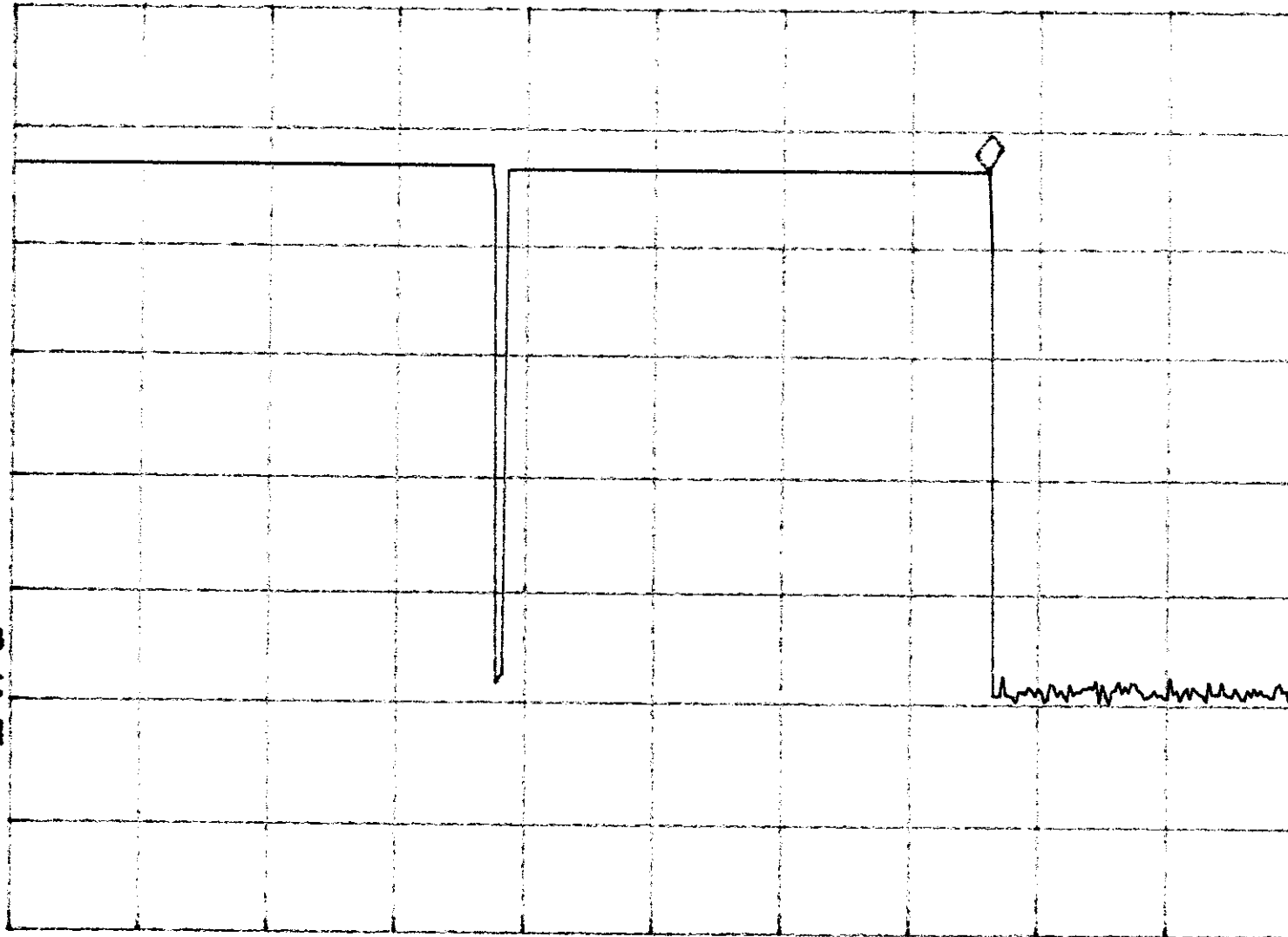
10

dB/

VA SB

SC VC

CORR



CENTER 433.920 MHz

#RES BW 3.0 MHz

#VBW 3 MHz

SPAN 0 Hz

#SWP 500 msec

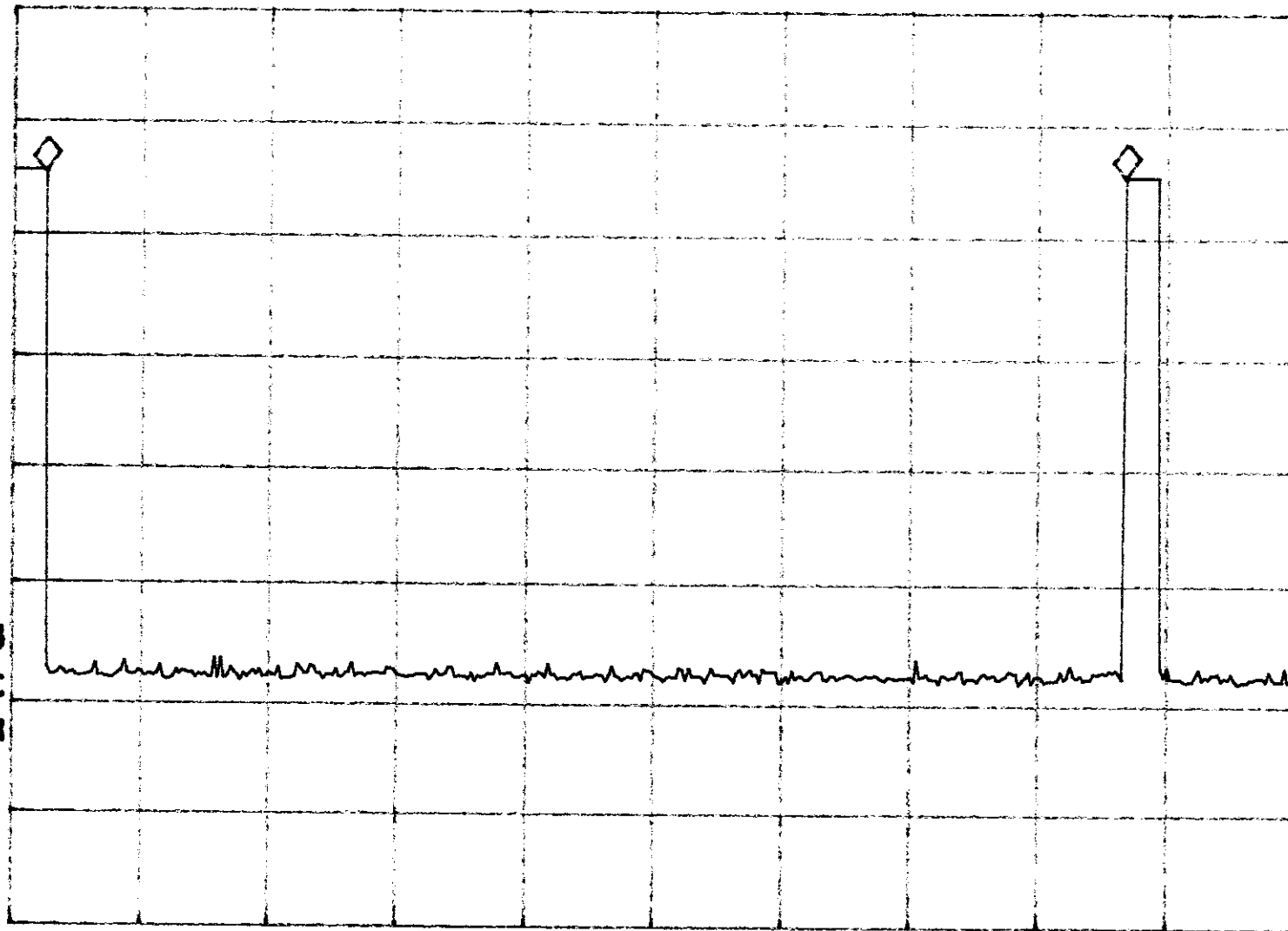
hp

REF 107.0 dB μ V AT 10 dB

MKR 12.638 sec
.02 dB

PEAK
LOG
10
dB/

VA SB
SC VC
CORR



CENTER 433.920 MHz

#RES BW 3.0 MHz

#VBW 3 MHz

SPAN 0 Hz

#SWP 15.0 sec