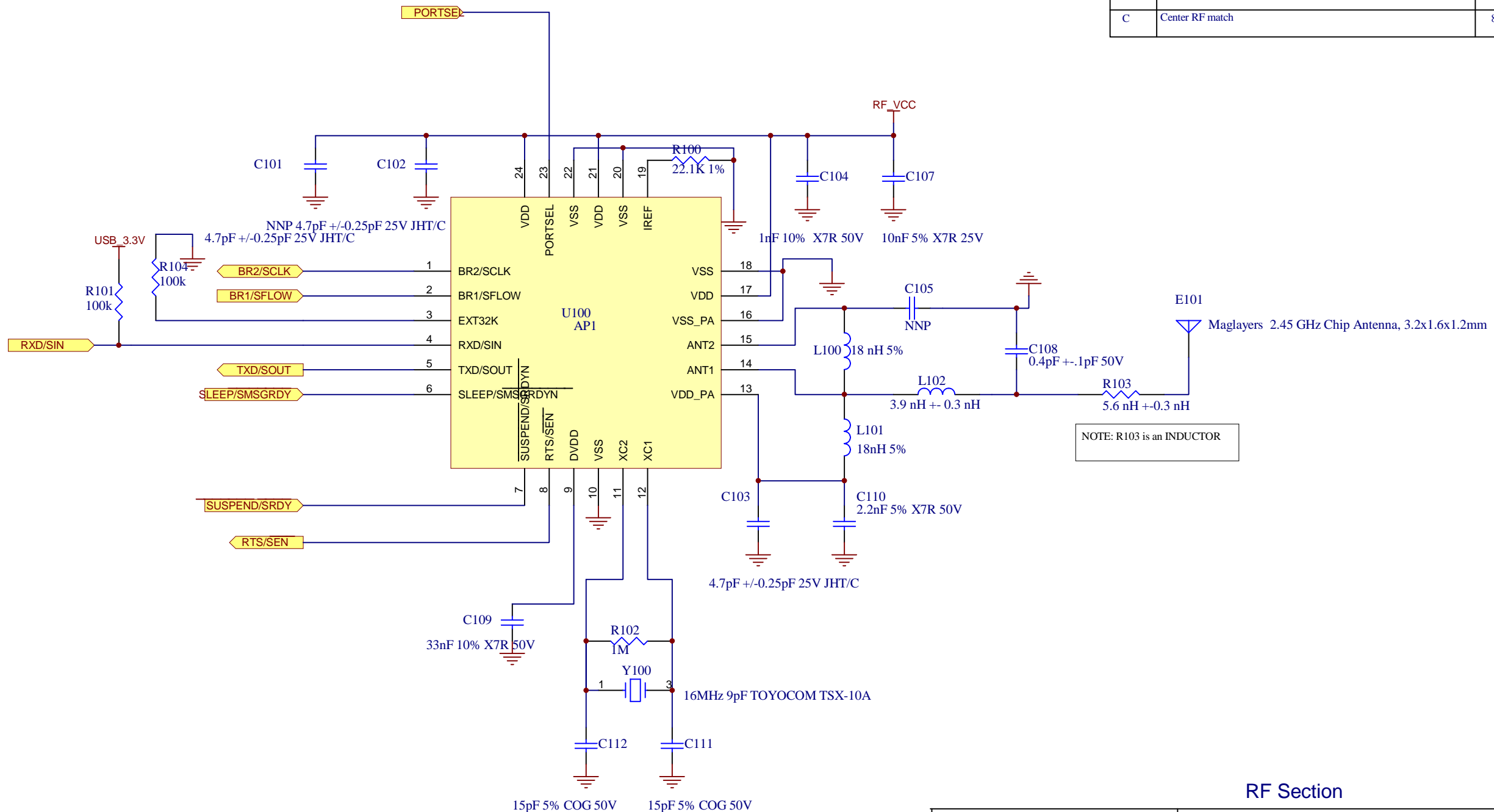


REVISIONS			
REV	DESCRIPTION	DATE	ECO No.
A	Prod Rls for Proto Run	6/27/07	45788
B	Change antenna, update RF tuning component values	8/19/2008	55610
C	Center RF match	8/20/2008	55611

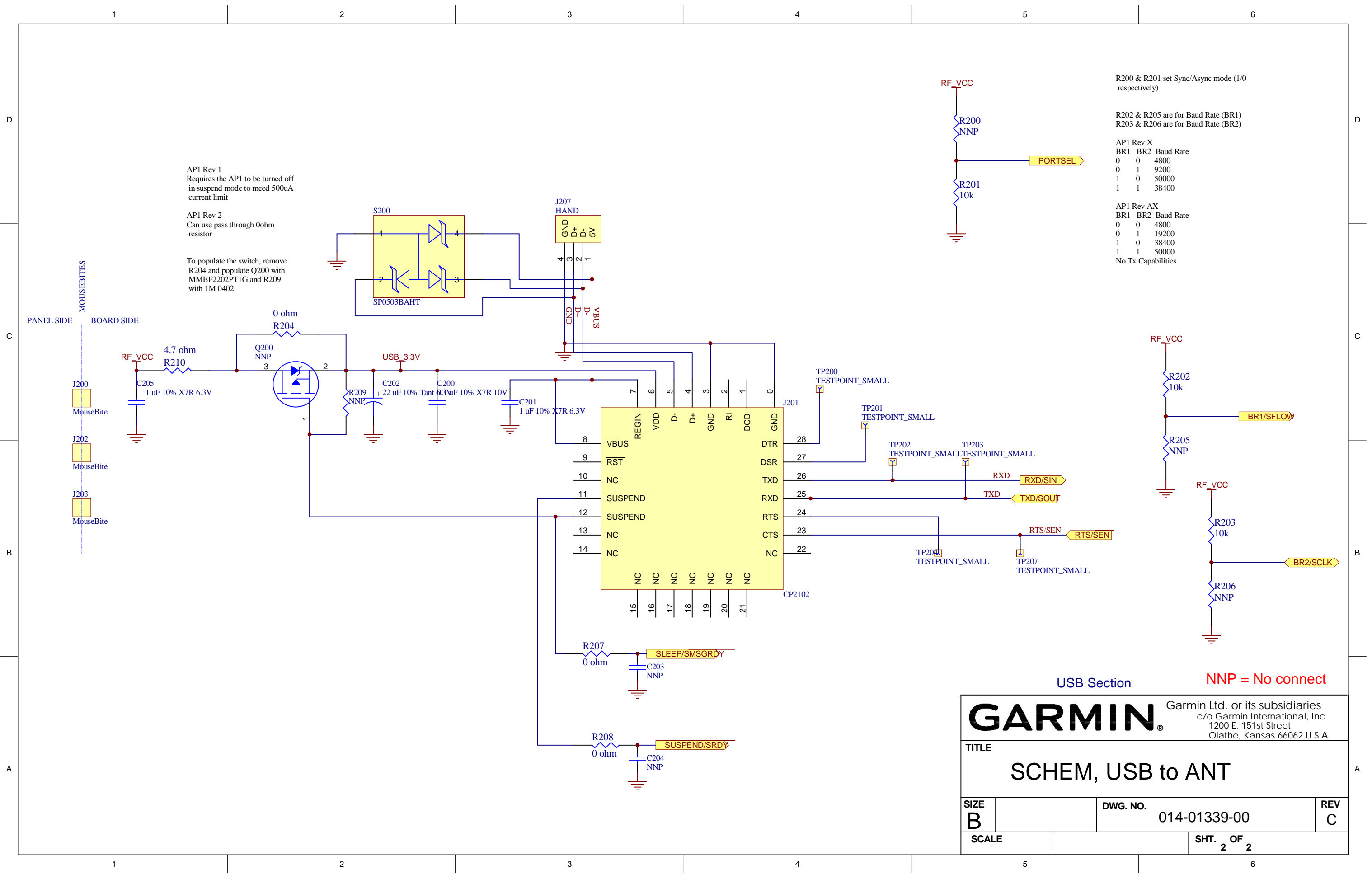


NOTE: R103 is an INDUCTOR

Drafting Location: Dynastream
 Source Editor: Protel
 Design changes to be made strictly at
 Dynastream

RF Section

<p>CONFIDENTIAL</p> <p>This drawing and the specifications contained herein are the property of Garmin Ltd. or its subsidiaries and may not be reproduced or used in whole or in parts as the basis for manufacture or sale of products without written permission.</p>		<p>GARMIN®</p> <p>Garmin Ltd. or its subsidiaries c/o Garmin International, Inc. 1200 E. 151st Street Olathe, Kansas 66062 U.S.A</p>	
<p>TOLERANCE UNLESS NOTED OTHERWISE</p> <p>ENGLISH UNITS .XX ±0.10 .XXX ±0.005 HOLES ±0.03 METRIC UNITS X ±.25 .XX ±.13 HOLES ±.08 ANGLES ±.05°</p>		<p>DRWN. BB</p> <p>CHKD. JPM</p> <p>PROJ. MGR. DJW</p> <p>RLS BY SMP</p>	<p>DATE</p> <p>6/8/07</p> <p>6/11/07</p> <p>6/12/07</p> <p>6/19/07</p>
<p>TITLE</p> <p>SCHEM, USB to ANT</p>		<p>SIZE</p> <p>B</p>	<p>DWG. NO.</p> <p>014-01339-00</p>
<p>SCALE</p>		<p>SHT. 1 OF 2</p>	
<p>REV</p> <p>C</p>		<p>REV</p> <p>C</p>	



AP1 Rev 1
Requires the AP1 to be turned off in suspend mode to meet 500uA current limit

AP1 Rev 2
Can use pass through 0ohm resistor

To populate the switch, remove R204 and populate Q200 with MMBF2202PT1G and R209 with 1M 0402

R200 & R201 set Sync/Async mode (1/0 respectively)

R202 & R205 are for Baud Rate (BR1)
R203 & R206 are for Baud Rate (BR2)

AP1 Rev X		
BR1	BR2	Baud Rate
0	0	4800
0	1	9200
1	0	50000
1	1	38400

AP1 Rev AX		
BR1	BR2	Baud Rate
0	0	4800
0	1	19200
1	0	38400
1	1	50000

No Tx Capabilities

USB Section

NNP = No connect

GARMIN®

Garmin Ltd. or its subsidiaries
c/o Garmin International, Inc.
1200 E. 151st Street
Olathe, Kansas 66062 U.S.A

TITLE
SCHEM, USB to ANT

SIZE B	DWG. NO. 014-01339-00	REV C
SCALE	SHT. 2 OF 2	