

# EXHIBIT L – Spurious Emissions at Antenna Terminals Data

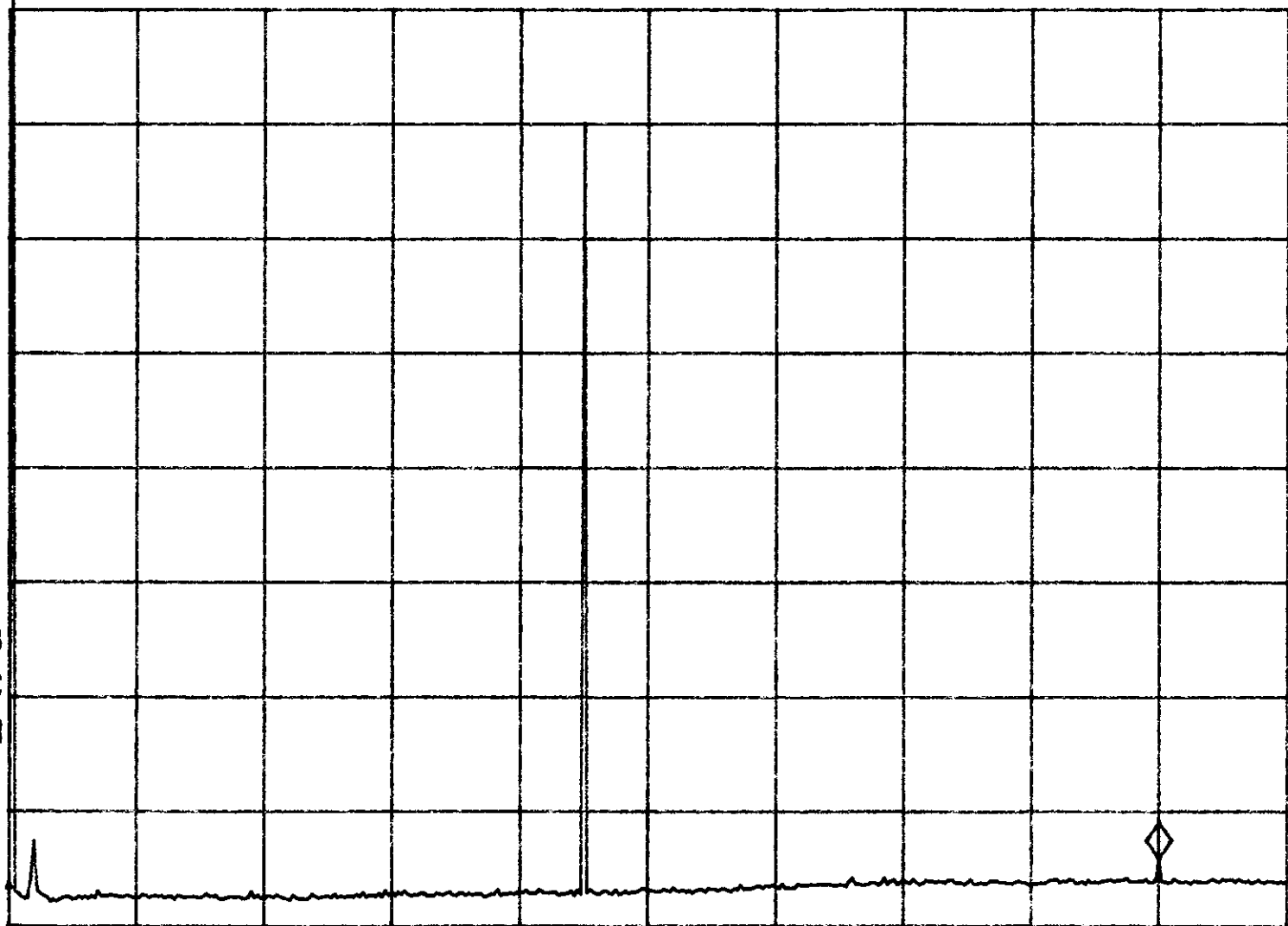
FCC ID# NMEAVTS1010

15:01:33 MAR 17, 2000

Spurious emissions @ antenna terminals - 1MHz to 1GHz  
REF 34.0 dBm #AT 30 dB PG -20.0 dB -40.12 dBm

PEAK  
LOG  
10  
dB/

VA SB  
SC FC  
CORR



START 0 Hz

#RES BW 10 KHz

#VBW 10 KHz

STOP 1.000 GHz

SWP 30.0 sec

15:06:30 MAR 17, 2000

~~HP~~ Spurious emissions @ antenna terminals - low band

REF 34.0 dBm

#AT 30 dB PG -20.0 dB

PEAK

LOG

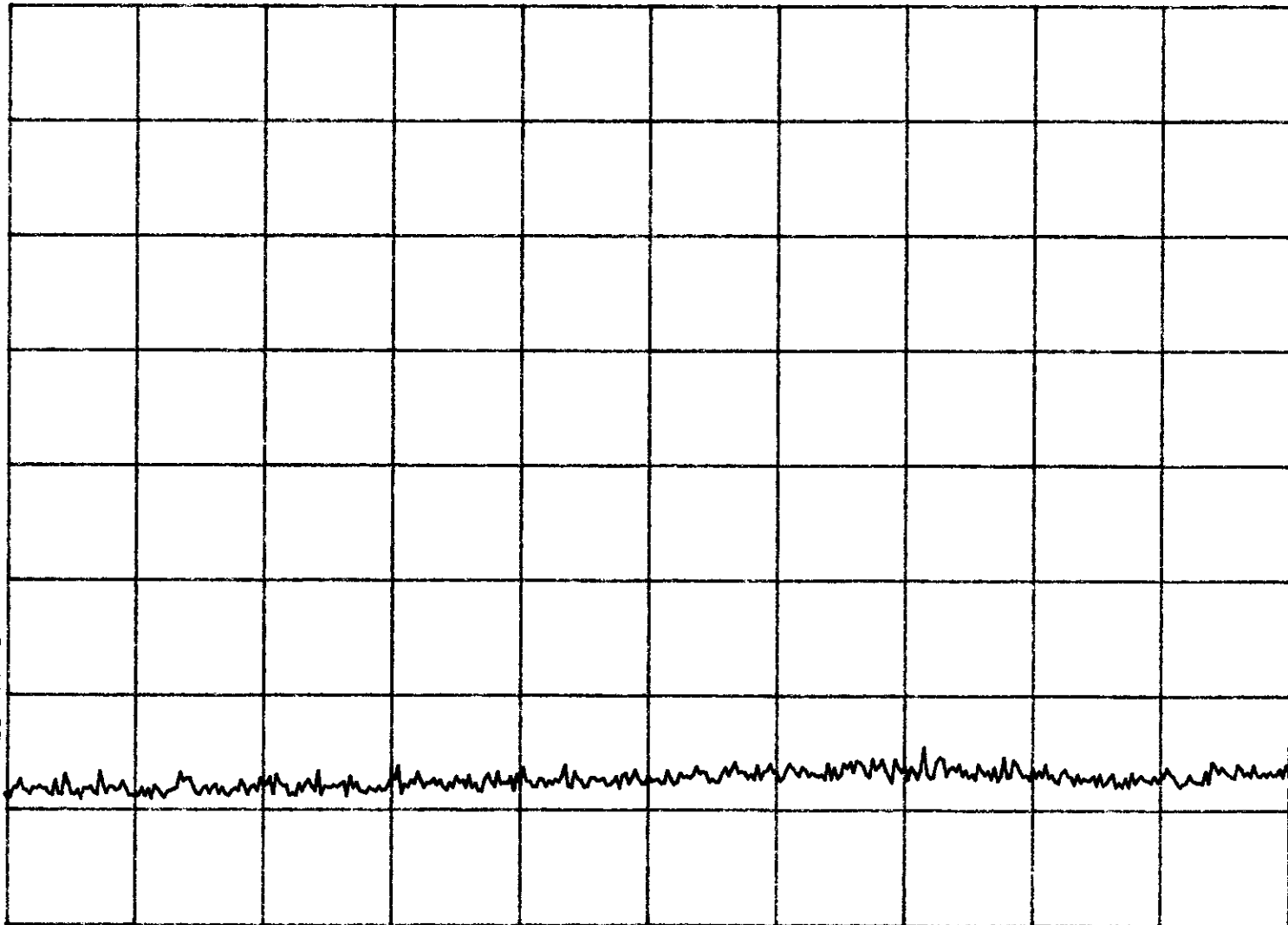
10

dB/

VA SB

SC FC

CORR



START 999 MHz

#RES BW 100 KHz

STOP 2.900 GHz

#VBW 100 KHz

SWP 570 msec

15:08:44 MAR 17, 2000

Spurious emissions @ antenna terminals - low band

REF 34.0 dBm

#AT 30 dB PG -20.0 dB

PEAK

LOG

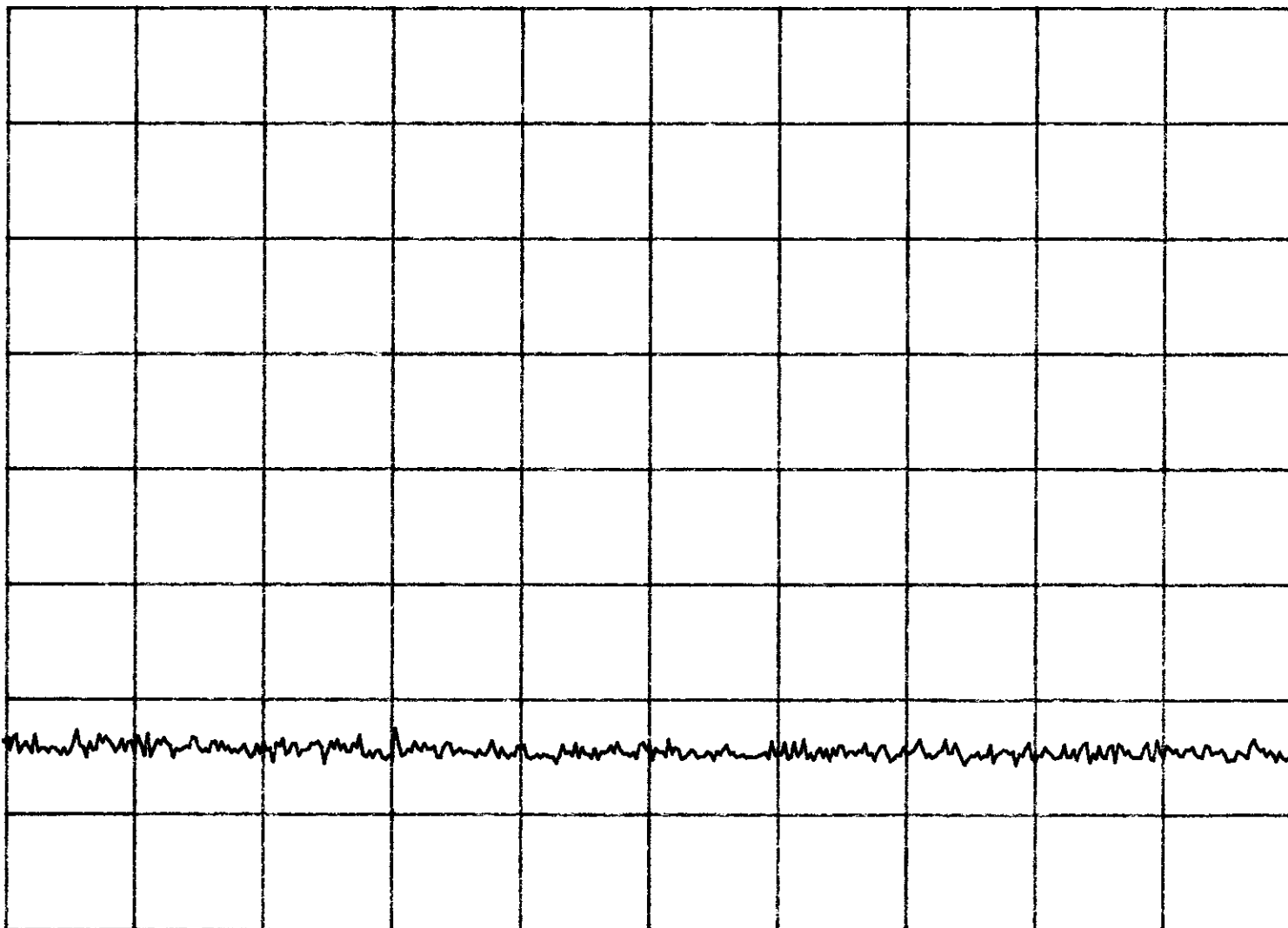
10

dB/

VA SB

SC FC

CORR



START 2.899 GHz

STOP 5.000 GHz

#RES BW 100 KHz

#VBW 100 KHz

SWP 630 msec

17:28:54 MAR 16, 2000

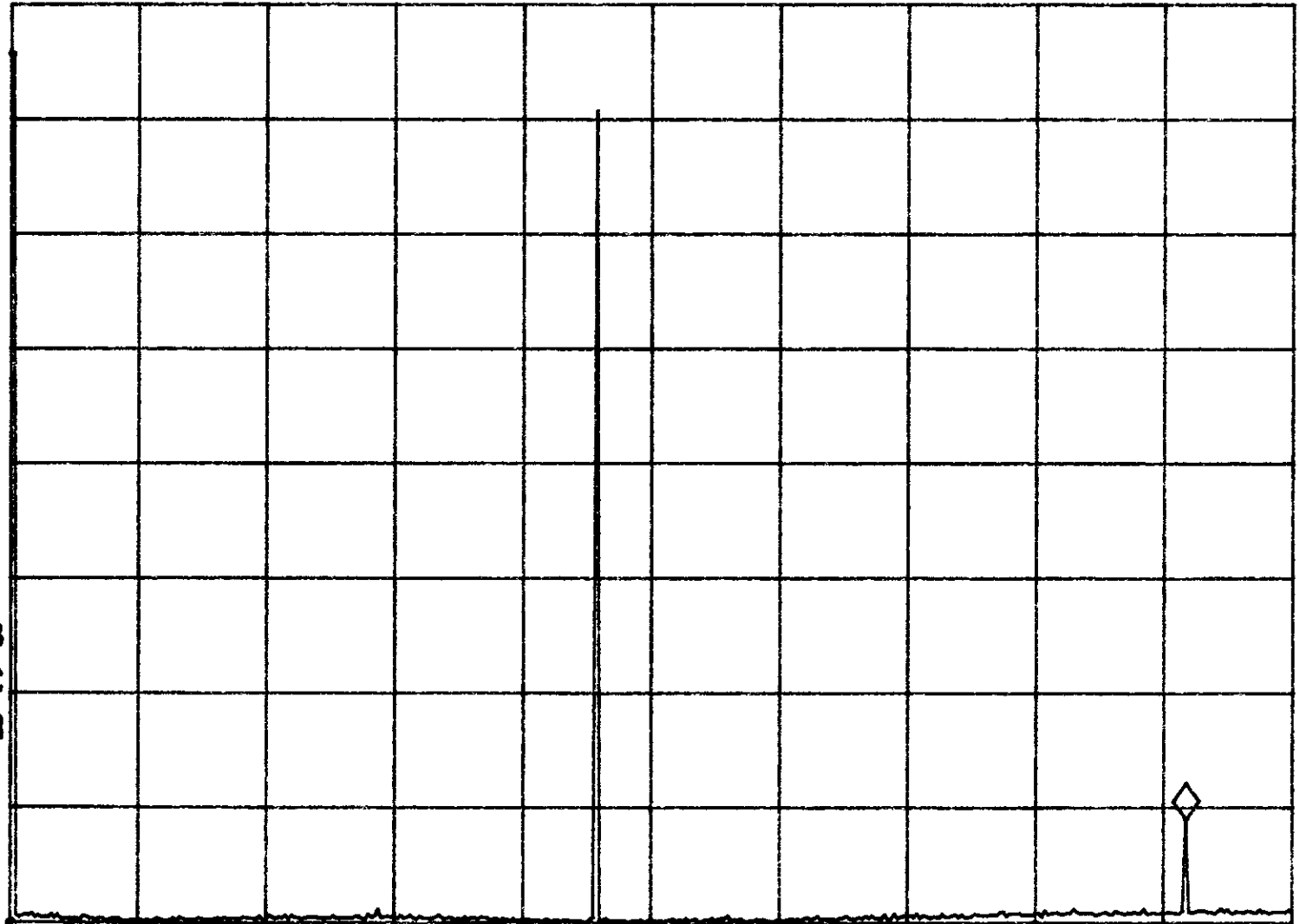
Spurious emissions @ antenna terminals - MKR Band 170 MHz

REF 34.0 dBm ATTEN 30 dB PG -20.0 dB

-37.03 dBm

PEAK  
LOG  
10  
dB/

VA SB  
SC FC  
CORR



START 0 Hz

#RES BW 10 KHz

#VBW 10 KHz

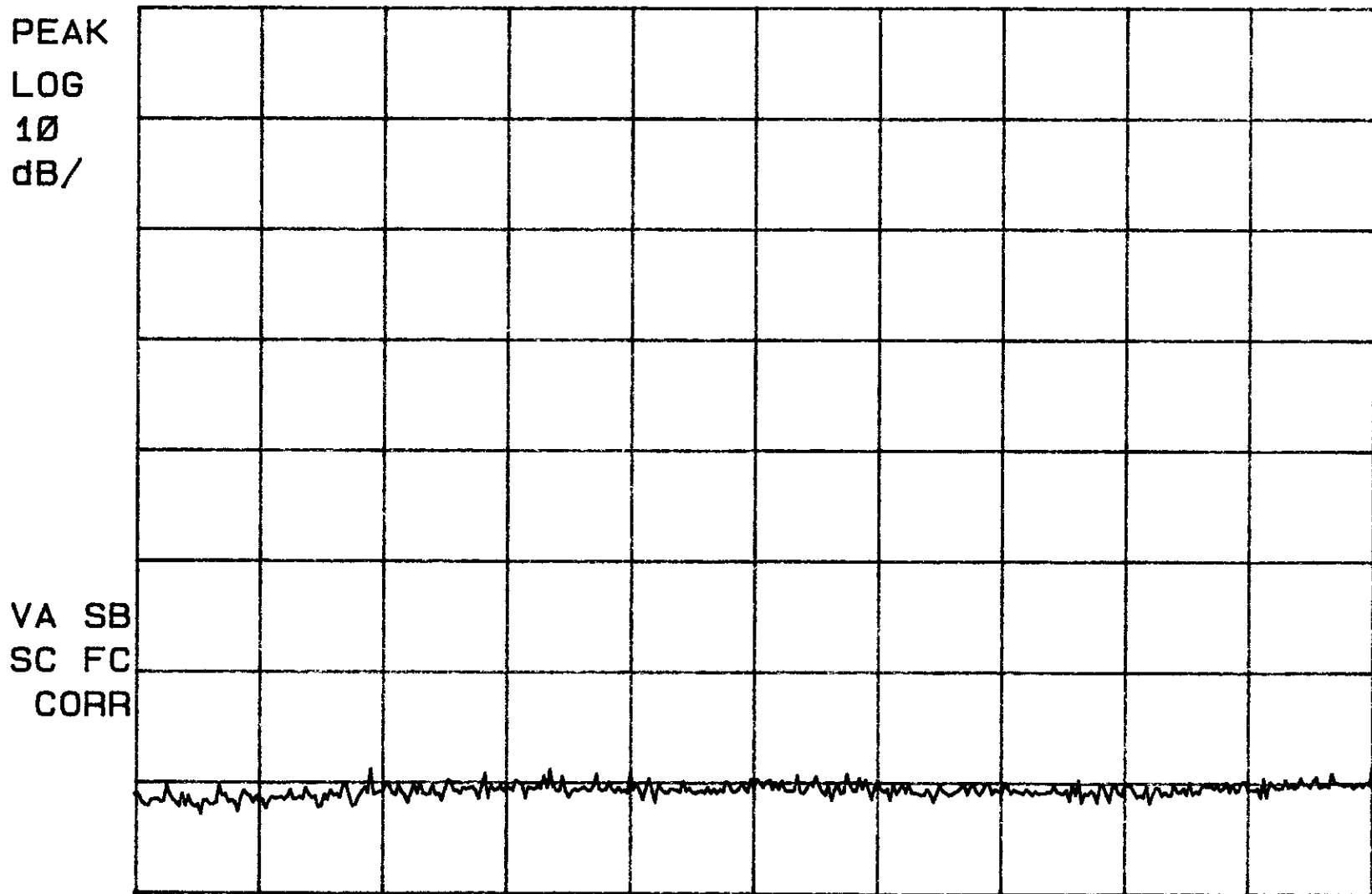
STOP 1.000 GHz

SWP 30 sec

17:31:52 MAR 16, 2000

hp Spurious emissions @ antenna terminals - Mid Band

REF 34.0 dBm ATTEN 30 dB PG -20.0 dB



START 999 MHz

#RES BW 100 kHz

STOP 2.900 GHz

#VBW 100 kHz

SWP 570 msec

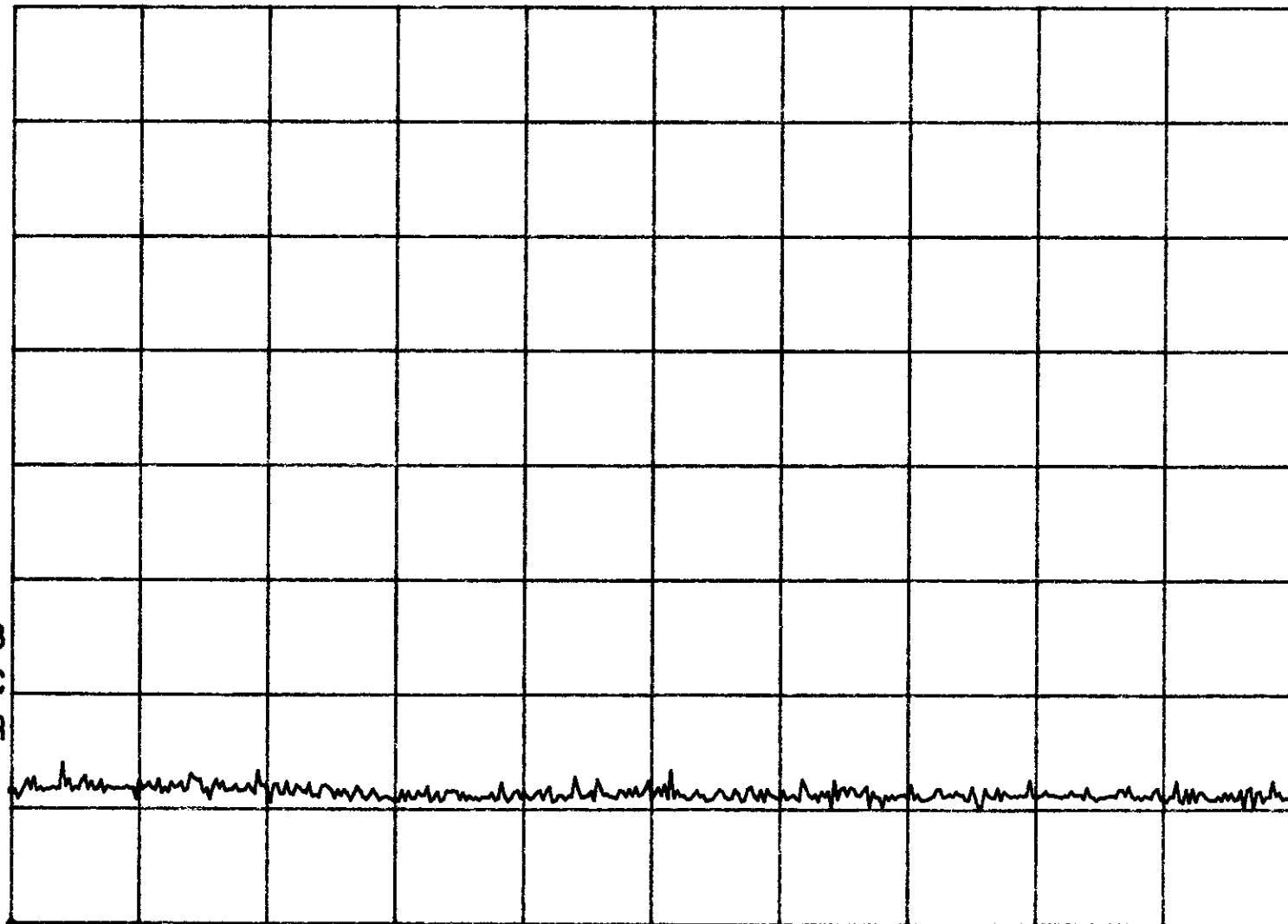
17:34:24 MAR 16, 2000

*hp* Spurious emissions @ antenna terminals - Mid Band

REF 34.0 dBm    ATTEN 30 dB PG -20.0 dB

PEAK  
LOG  
10  
dB/

VA SB  
SC FC  
CORR



START 2.899 GHz

STOP 5.000 GHz

#RES BW 100 kHz

#VBW 100 kHz

SWP 630 msec

15:54:04 MAR 17, 2000

~~HP~~ Spurious emissions @ antenna terminals - high band

REF 34.0 dBm

#AT 30 dB PG -20.0 dB

PEAK

LOG

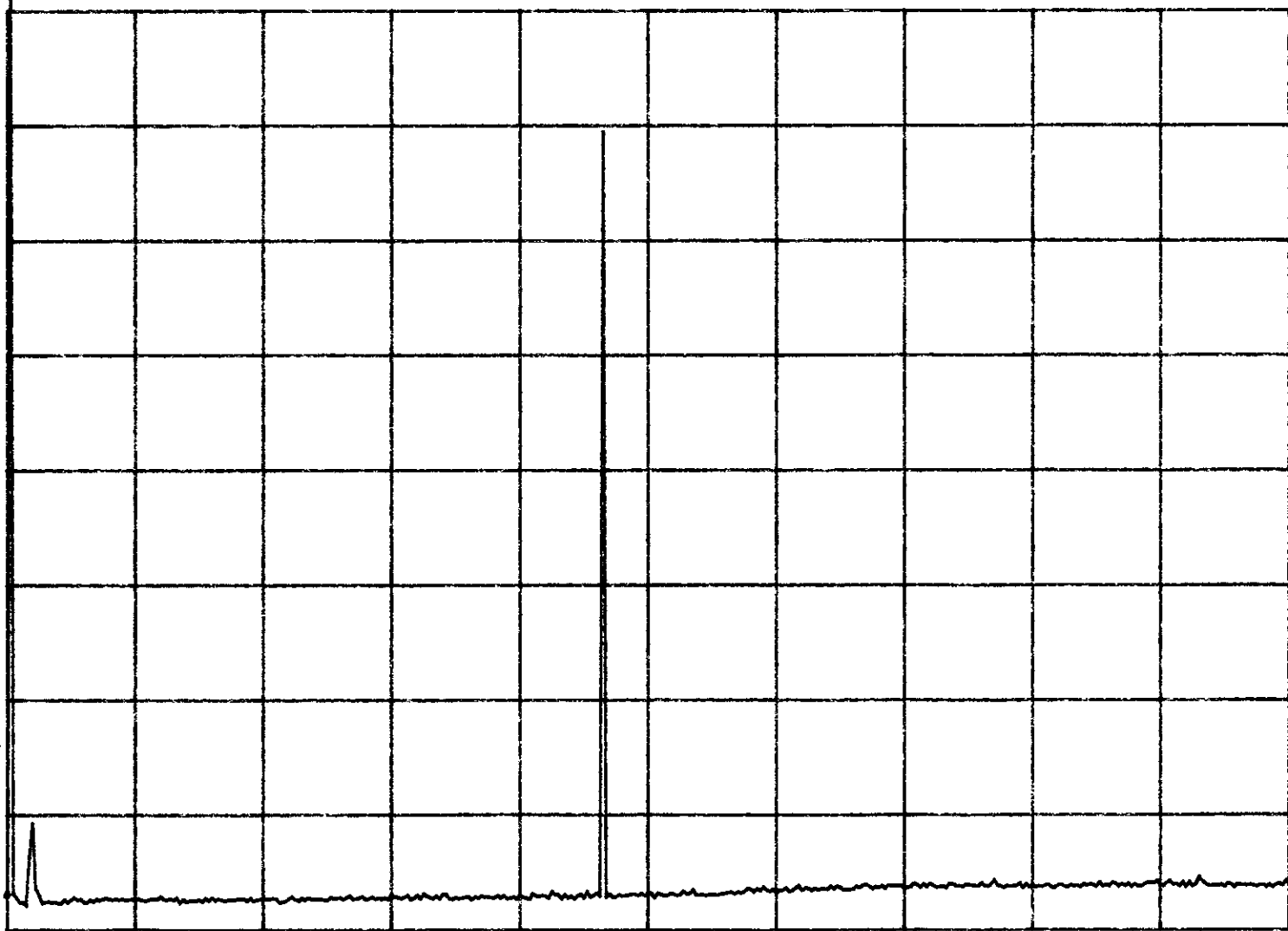
10

dB/

VA SB

SC FC

CORR



START 0 Hz

#RES BW 10 KHz

STOP 1.000 GHz

#VBW 10 KHz

SWP 30.0 sec



16:00:21 MAR 17, 2000

~~HP~~ Spurious emissions @ antenna terminals - high band

REF 34.0 dBm

#AT 30 dB PG -20.0 dB

PEAK

LOG

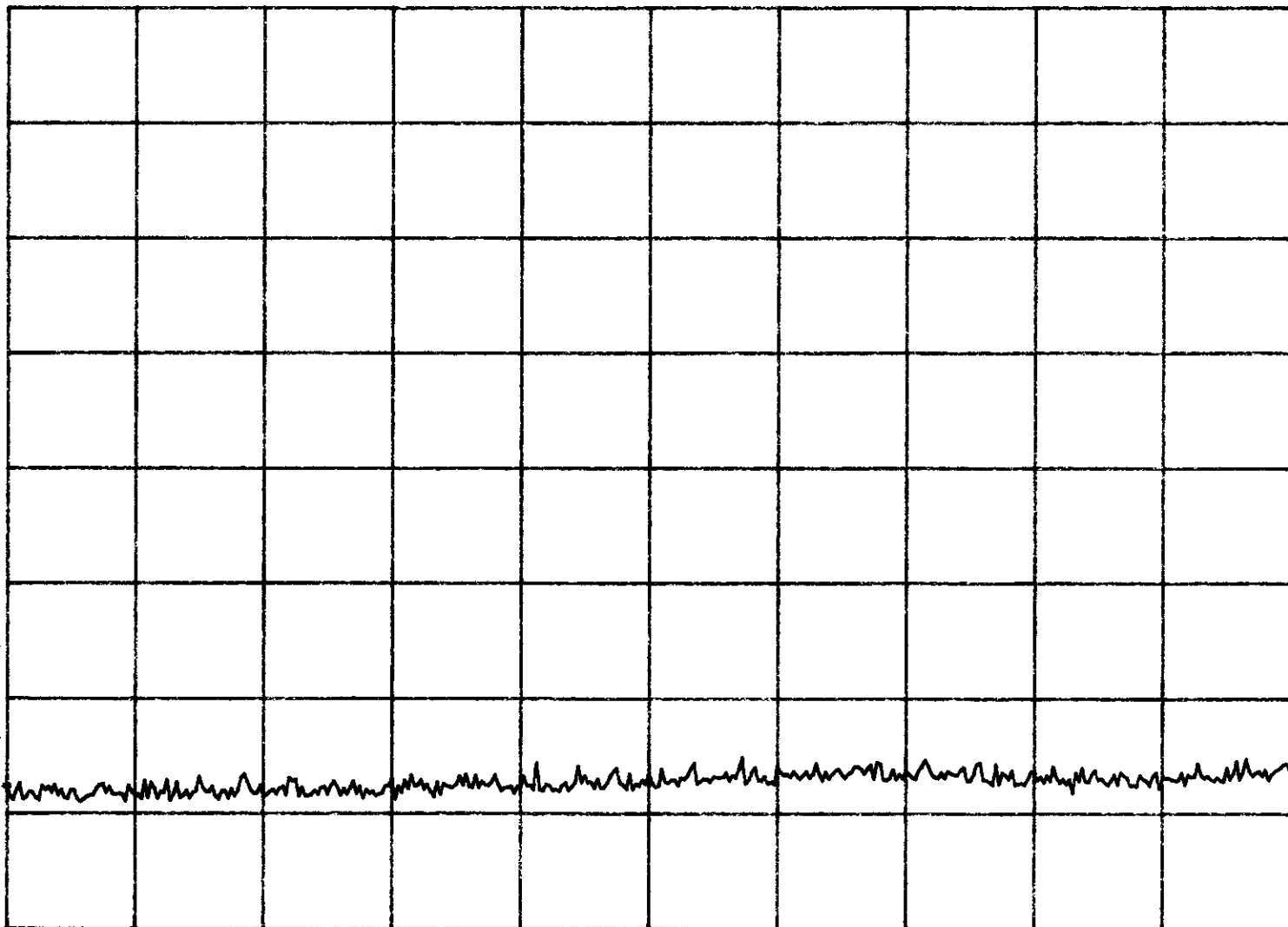
10

dB/

VA SB

SC FC

CORR



START 999 MHz

STOP 2.900 GHz

#RES BW 100 kHz

#VBW 100 kHz

SWP 570 msec

15:58:14 MAR 17, 2000

~~HP~~ Spurious emissions @ antenna terminals - high band

REF 34.0 dBm

#AT 30 dB PG -20.0 dB

PEAK

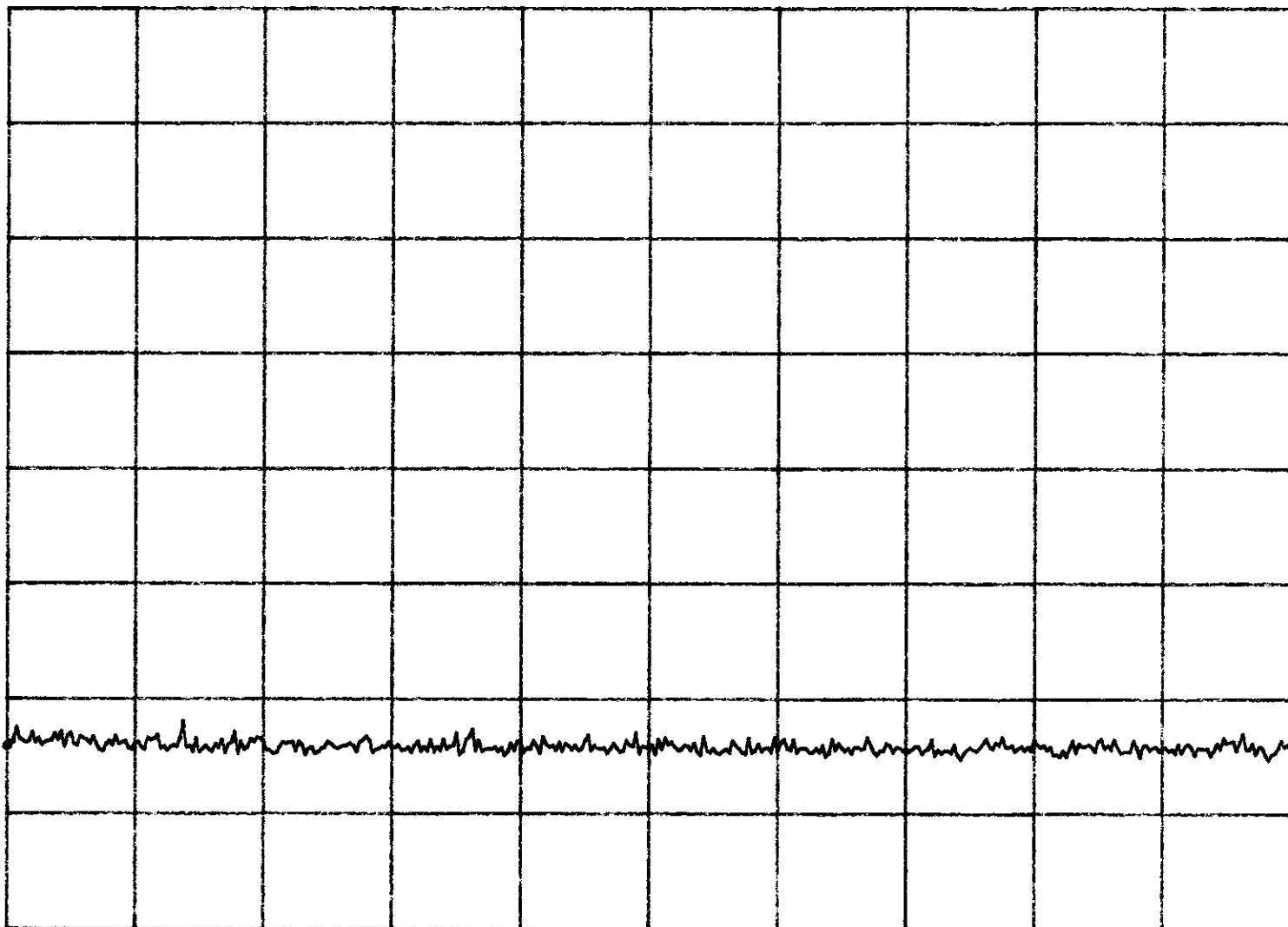
LOG

10  
dB/

VA SB

SC FC

CORR



START 2.899 GHz

STOP 5.000 GHz

#RES BW 100 kHz

#VBW 100 kHz

SWP 630 msec