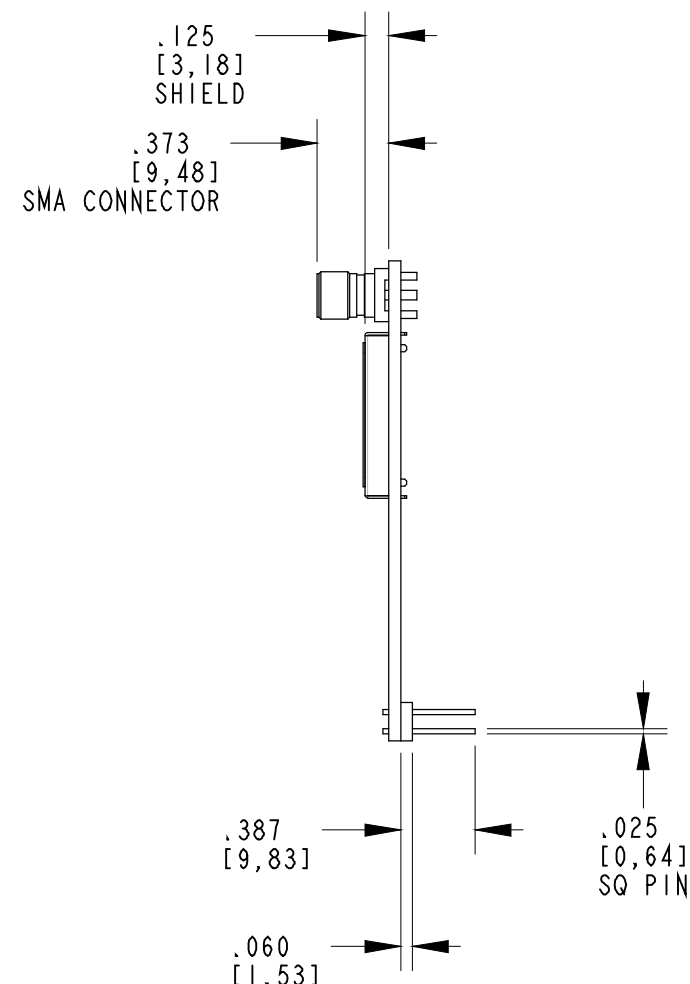
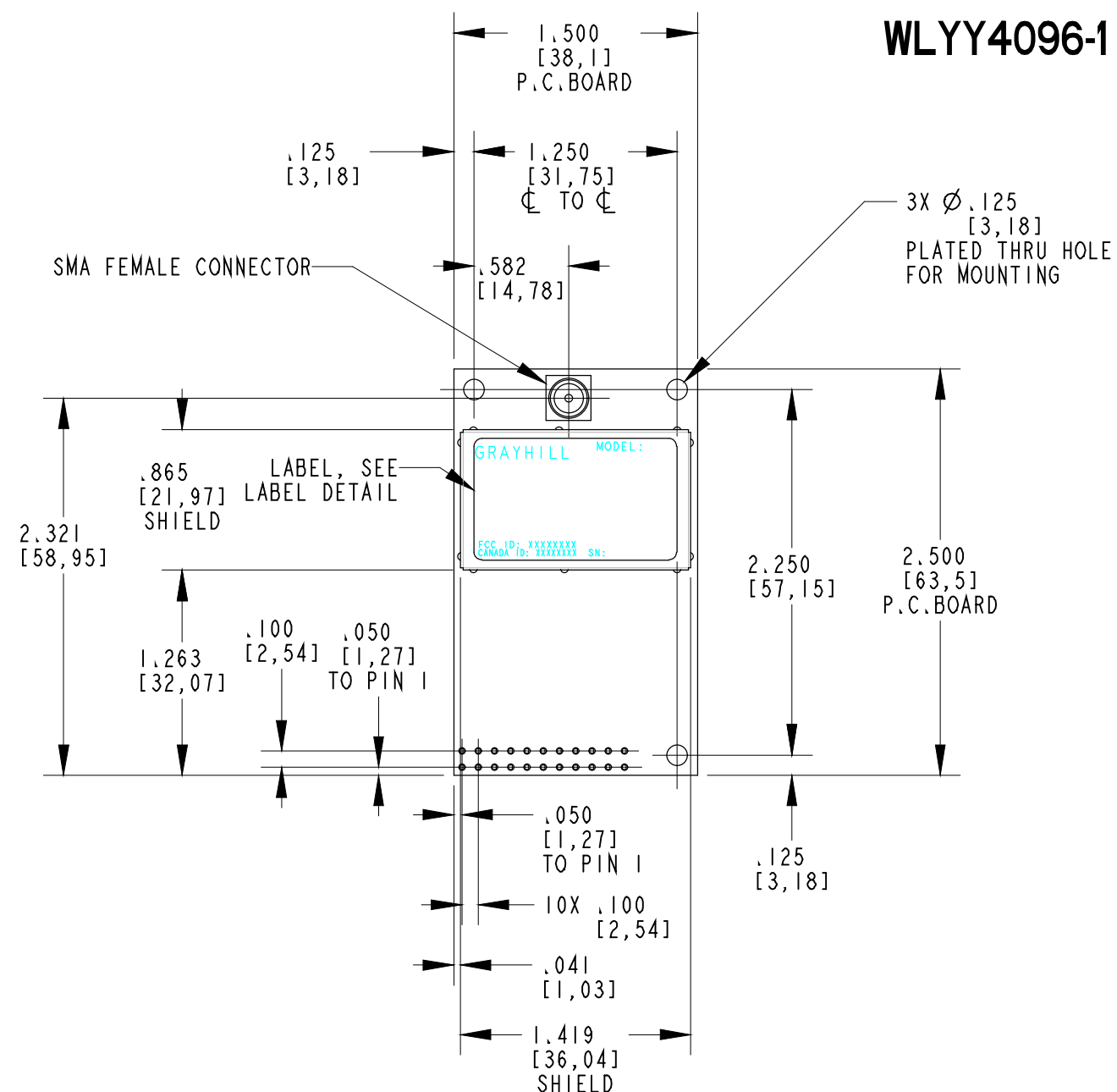


**WLYY4096-1 SHOWN**



GRAYHILL "YY" PART NUMBER OR-  
GRAYHILL "SALES" PART NUMBER


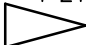


GRAYHILL (ASM. NUMBER)

FCC ID: XXXXXXXX  
CANADA ID: XXXXXXXX SN:XXXXXXXXXX

SERIAL NUMBER, SEE NOTE 4-

**LABEL DETAIL**  
NOT ALL LEGENDS SHOWN  
SCALE 2.000

ALL REVISIONS TO THIS DRAWING  
MUST BE MADE ON THE PRO/E SYSTEM

A		GEA/LLL 8-16-04		ORIGINAL. ECN#353029 LLL 8-16-04	
ISSUE		APP/DATE		DESCRIPTION	
REVISIONS					
			GRAYHILL, INC. 561 HILLGROVE AVE. LA GRANGE, IL 60525 PHONE (708) 354-1040		
UNLESS OTHERWISE SPECIFIED TOLERANCES AND DIMENSIONS ARE IN INCHES LINEAR $\pm .010$ DIAMETERS $\pm .005$ ANGULAR $\pm 1$ LIMITS APPLY BEFORE FINISHING DO NOT SCALE THIS PRINT					
CRITICAL CHARACTERISTIC FLAGS PER GRAYHILL SPEC. SOP2338					
		-- CRITICAL CHARACTERISTIC FLAG			
		-- Cpk REQUIRED			
		-- S.P.C. FLAG (CONTROL CHART REQ'D ON FEATURE SPECIFIED)			
FINISH SEE NOTES				APPROVED DATE LLL 8-16-04	
MATERIAL SEE NOTES				CHECKED DATE GEA 8-16-04	
NAME ASM, FINAL				DRAWN DATE LLL 8-16-04	
CAGE NO. 81073			WLYY4096-X		
B SIZE		DWG. NO. WLYY4096-X		ISSUE A	
SCALE 1.000		SHEET		OF	

ASSEMBLY NOTES:

1. REFER TO INDIVIDUAL PIECE PART DRAWING FOR MATERIALS AND FINISHES.
2. E.S.D. PROTECTION MUST BE UTILIZED WHEN HANDLING THIS ASSEMBLY.
3. TEST COMPLETED ASSEMBLY FOR PROPER OPERATION, SHORTS AND WORKMANSHIP.
4. AFTER TESTING, PRINT LABEL PER LABEL DETAIL AND ATTACH TO SHIELD AS SHOWN.
5. MANUFACTURING SHALL RECORD SERIAL NUMBERS AND ENSURE THAT DUPLICATES ARE NOT PRODUCED. SERIAL NUMBER SHALL ALSO BE CONSIDERED A MAC I.D.
6. UNLESS OTHERWISE SPECIFIED, REFER TO GRAYHILL ASSEMBLY INSTRUCTIONS FOR ASSEMBLY PROCEDURES NOT SPECIFIED ON THIS DRAWING.
7. GEOMETRY DESCRIBED ON THIS DRAWING IS FOR THE WLYY4096-1 ONLY. CUSTOMER SPECIFIC REQUIREMENTS MAY CHANGE PIN LENGTH, RF CONNECTOR AND LABELING REQUIREMENTS.