

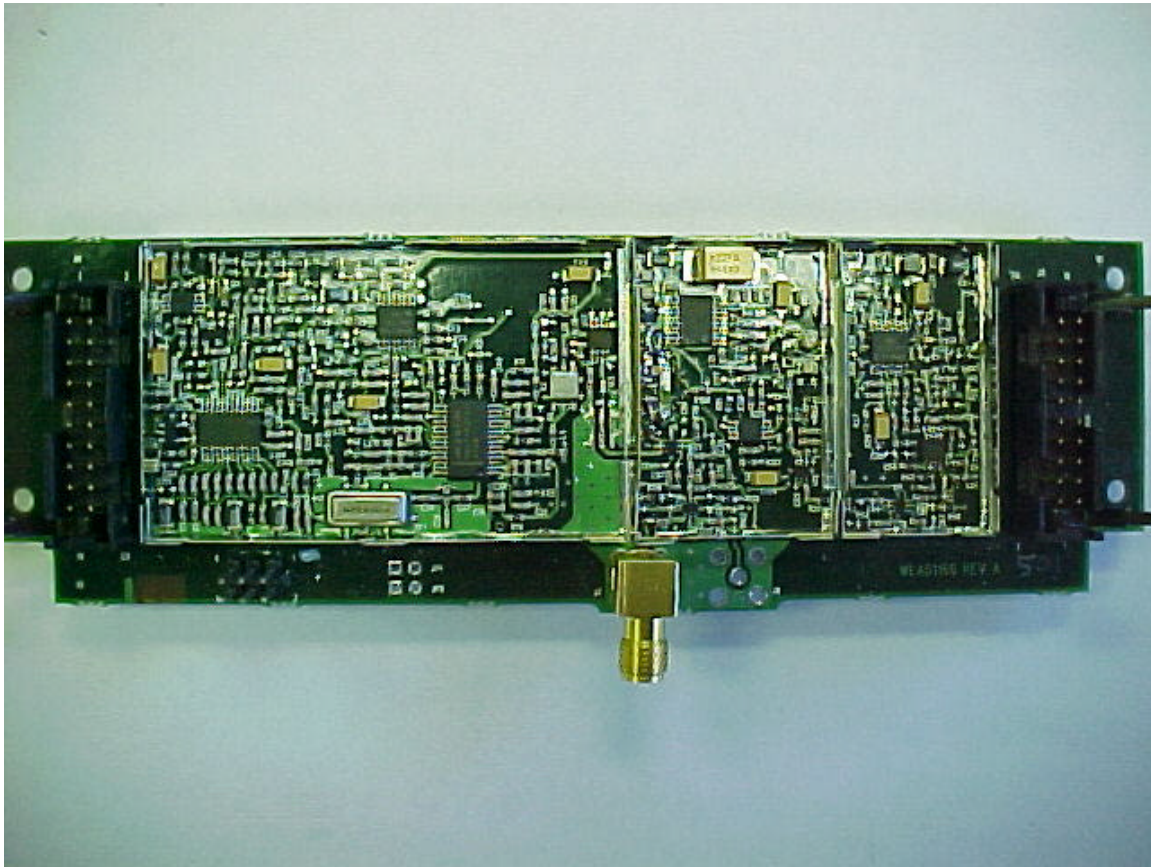
Grayhill Incorporated

EZCom-LP 900 MHz Digital Radio

FCC ID#: NMAEZCOMLPM

Photo Three RF PCB Shield Removed for Inspection

Note: This 900 MHz Digital Radio is filed as a FCC Mobile Classification to be used with Grayhill's OCU - Remote Control Unit filed with the FCC as FCC ID#: NMAEZCOMLPP.



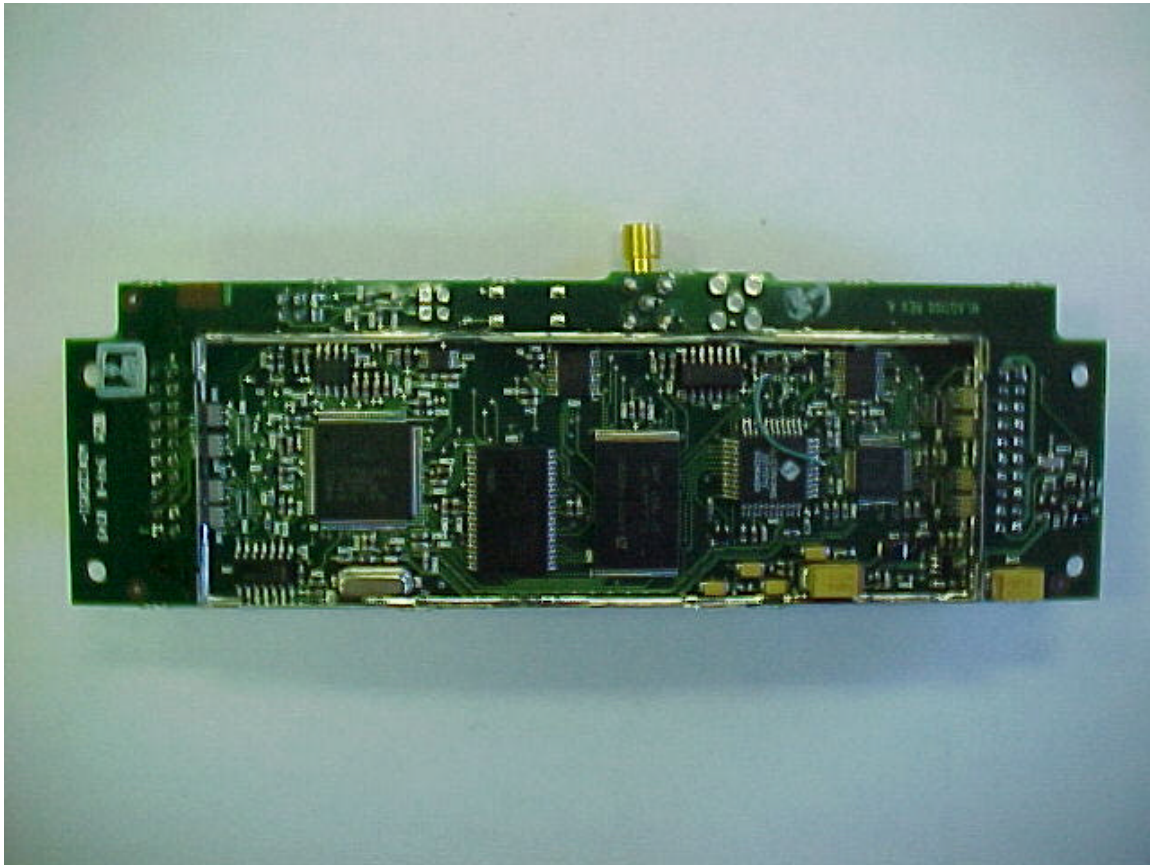
Grayhill Incorporated

EZCom-LP 900 MHz Digital Radio

FCC ID#: NMAEZCOMLPM

Photo Four Flip Side of RF PCB with Shield Removed for Inspection

Note: This 900 MHz Digital Radio is filed as a FCC Mobile Classification to be used with Grayhill's OCU - Remote Control Unit filed with the FCC as FCC ID#: NMAEZCOMLPP.



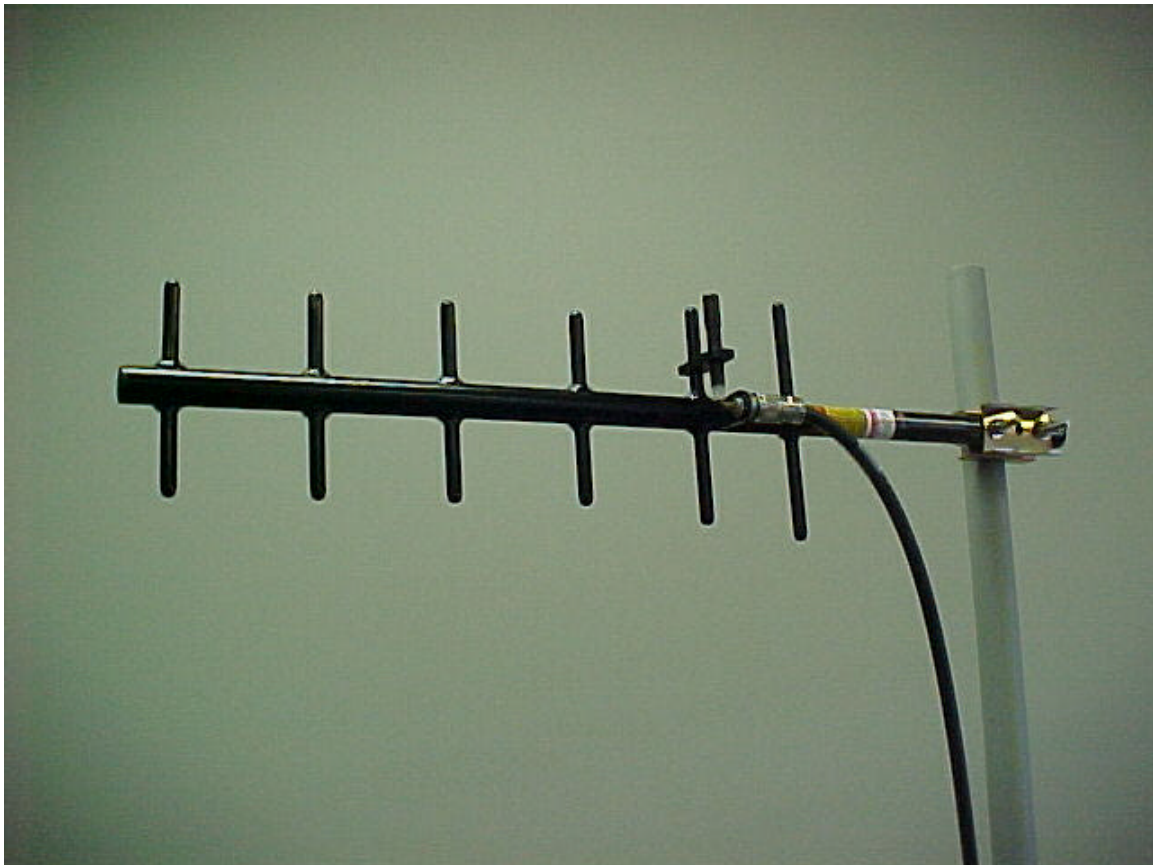
Grayhill Incorporated

EZCom-LP 900 MHz Digital Radio

FCC ID#: NMAEZCOMLPM

Photo Five Yagi Antenna as one of two available for this RF 900 MHz Digital Radio's Application

Note: This 900 MHz Digital Radio is filed as a FCC Mobile Classification to be used with Grayhill's OCU - Remote Control Unit filed with the FCC as FCC ID#: NMAEZCOMLPP.



Grayhill Incorporated

EZCom-LP 900 MHz Digital Radio

FCC ID#: NMAEZCOMLPM

Photo Six

**Stacked Dipole / Collinear Array Antenna as one of two
available for this RF 900 MHz Digital Radio's Application**

Note: This 900 MHz Digital Radio is filed as a FCC Mobile Classification to be used with Grayhill's OCU - Remote Control Unit filed with the FCC as FCC ID#: NMAEZCOMLPP.



Grayhill Incorporated

EZCom-LP 900 MHz Digital Radio

FCC ID#: NMAEZCOMLPM

Photo Seven

**Stacked Dipole / Collinear Array Antenna Close-up of RF Connection to RF PCB as
one of two available for this RF 900 MHz Digital Radio's Application**

Note: This 900 MHz Digital Radio is filed as a FCC Mobile Classification to be used with Grayhill's
OCU - Remote Control Unit filed with the FCC as FCC ID#: NMAEZCOMLPP.



Grayhill Incorporated

**EZCom-LP
900 MHz Digital Radio**

FCC ID#: NMAEZCOMLPM

Photo Eight

Stacked Dipole / Collinear Array Antenna Close-up of RF Connection to RF PCB as one of two available for this RF 900 MHz Digital Radio's Application showing Detailed Warning Label.

Note: This 900 MHz Digital Radio is filed as a FCC Mobile Classification to be used with Grayhill's OCU - Remote Control Unit filed with the FCC as FCC ID#: NMAEZCOMLPP.

