

Body_CH4183

DUT: Wing200; Type: WCDMA; Serial: TY722FY00163

Communication System: WCDMA BAND5; Frequency: 836.6 MHz; Duty Cycle: 1:1

Medium: Muscle 900 MHz Medium parameters used (interpolated): $f = 836.6$ MHz; $\sigma = 0.964$ mho/m;

$\epsilon_r = 56.1$; $\rho = 1000$ kg/m³

Phantom section: Flat Section

DASY4 Configuration:

- Probe: EX3DV3 - SN3526; ConvF(10.93, 10.93, 10.93); Calibrated: 2007/8/29
- Sensor-Surface: 4mm (Mechanical Surface Detection)
- Electronics: DAE4 Sn679; Calibrated: 2007/4/20
- Phantom: SAM2; Type: SAM 4.0; Serial: TP:1270
- Measurement SW: DASY4, V4.7 Build 53; Postprocessing SW: SEMCAD, V1.8 Build 172

Body/Area Scan (51x81x1): Measurement grid: dx=15mm, dy=15mm

Maximum value of SAR (interpolated) = 0.860 mW/g

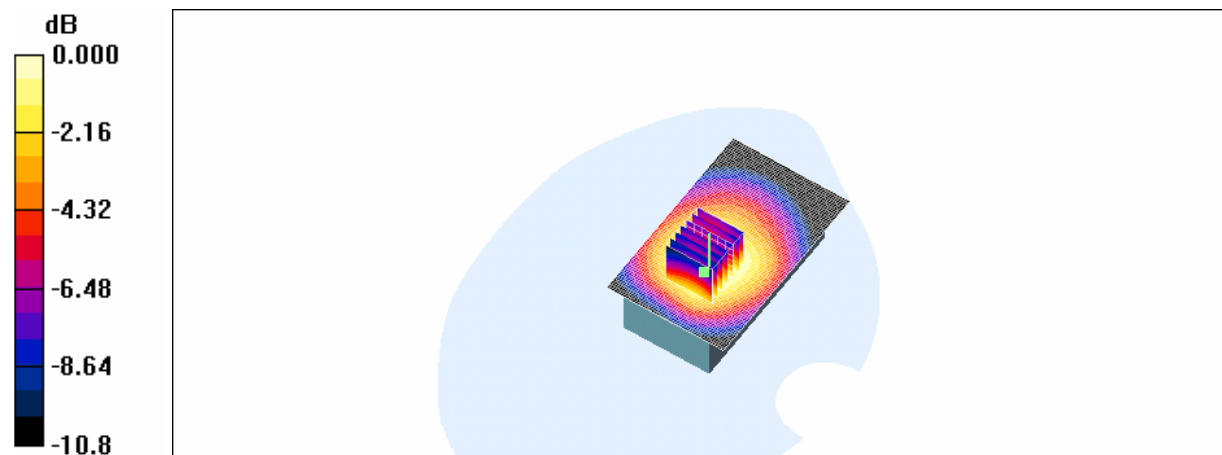
Body/Zoom Scan (5x5x7)/Cube 0: Measurement grid: dx=8mm, dy=8mm, dz=5mm

Reference Value = 11.8 V/m; Power Drift = -0.110 dB

Peak SAR (extrapolated) = 1.05 W/kg

SAR(1 g) = 0.796 mW/g; SAR(10 g) = 0.575 mW/g

Maximum value of SAR (measured) = 0.842 mW/g



0 dB = 0.842mW/g

Body_CH4233

DUT: Wing200; Type: WCDMA; Serial: TY722FY00163

Communication System: WCDMA BAND5; Frequency: 846.6 MHz; Duty Cycle: 1:1

Medium: Muscle 900 MHz Medium parameters used (interpolated): $f = 846.6$ MHz; $\sigma = 0.974$ mho/m;

$\epsilon_r = 56$; $\rho = 1000$ kg/m³

Phantom section: Flat Section

DASY4 Configuration:

- Probe: EX3DV3 - SN3526; ConvF(10.93, 10.93, 10.93); Calibrated: 2007/8/29
- Sensor-Surface: 4mm (Mechanical Surface Detection)
- Electronics: DAE4 Sn679; Calibrated: 2007/4/20
- Phantom: SAM2; Type: SAM 4.0; Serial: TP:1270
- Measurement SW: DASY4, V4.7 Build 53; Postprocessing SW: SEMCAD, V1.8 Build 172

Body/Area Scan (51x81x1): Measurement grid: dx=15mm, dy=15mm

Maximum value of SAR (interpolated) = 0.915 mW/g

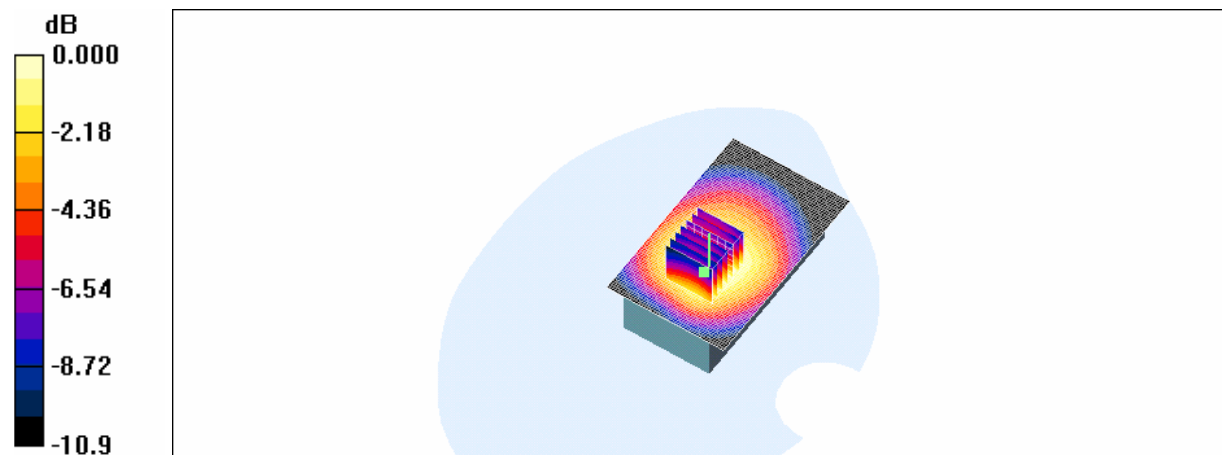
Body/Zoom Scan (5x5x7)/Cube 0: Measurement grid: dx=8mm, dy=8mm, dz=5mm

Reference Value = 12.3 V/m; Power Drift = -0.157 dB

Peak SAR (extrapolated) = 1.13 W/kg

SAR(1 g) = 0.843 mW/g; SAR(10 g) = 0.609 mW/g

Maximum value of SAR (measured) = 0.898 mW/g



0 dB = 0.898mW/g

Body_CH4132_repeated with Holster_2

DUT: Wing200; Type: WCDMA; Serial: TY722FY00163

Communication System: WCDMA BAND5; Frequency: 826.4 MHz; Duty Cycle: 1:1

Medium: Muscle 900 MHz Medium parameters used (interpolated): $f = 826.4$ MHz; $\sigma = 0.955$ mho/m;

$\epsilon_r = 56.2$; $\rho = 1000$ kg/m³

Phantom section: Flat Section

DASY4 Configuration:

- Probe: EX3DV3 - SN3526; ConvF(10.93, 10.93, 10.93); Calibrated: 2007/8/29
- Sensor-Surface: 4mm (Mechanical Surface Detection)
- Electronics: DAE4 Sn679; Calibrated: 2007/4/20
- Phantom: SAM2; Type: SAM 4.0; Serial: TP:1270
- Measurement SW: DASY4, V4.7 Build 53; Postprocessing SW: SEMCAD, V1.8 Build 172

Body/Area Scan (51x81x1): Measurement grid: dx=15mm, dy=15mm

Maximum value of SAR (interpolated) = 0.883 mW/g

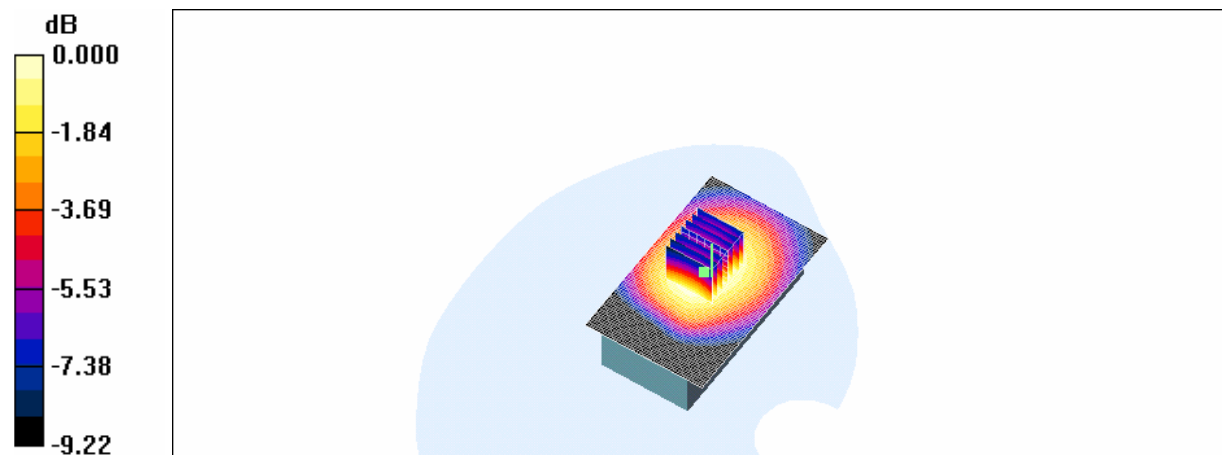
Body/Zoom Scan (5x5x7)/Cube 0: Measurement grid: dx=8mm, dy=8mm, dz=5mm

Reference Value = 5.61 V/m; Power Drift = -0.012 dB

Peak SAR (extrapolated) = 1.11 W/kg

SAR(1 g) = 0.840 mW/g; SAR(10 g) = 0.615 mW/g

Maximum value of SAR (measured) = 0.883 mW/g



0 dB = 0.883mW/g

Body_CH4132_ repeated with HSDPA mode

DUT: Wing200; Type: WCDMA; Serial: TY722FY00163

Communication System: WCDMA BAND5; Frequency: 826.4 MHz; Duty Cycle: 1:1
Medium: Muscle 900 MHz Medium parameters used (interpolated): $f = 826.4$ MHz; $\sigma = 0.954$ mho/m;
 $\epsilon_r = 56.2$; $\rho = 1000$ kg/m³
Phantom section: Flat Section

DASY4 Configuration:

- Probe: EX3DV3 - SN3526; ConvF(8.08, 8.08, 8.08); Calibrated: 2007/8/29
- Sensor-Surface: 4mm (Mechanical Surface Detection)
- Electronics: DAE4 Sn679; Calibrated: 2007/4/20
- Phantom: SAM1; Type: SAM 4.0; Serial: TP:1270
- Measurement SW: DASY4, V4.7 Build 53; Postprocessing SW: SEMCAD, V1.8 Build 172

Body/Area Scan (51x81x1): Measurement grid: dx=15mm, dy=15mm

Maximum value of SAR (interpolated) = 1.18 mW/g

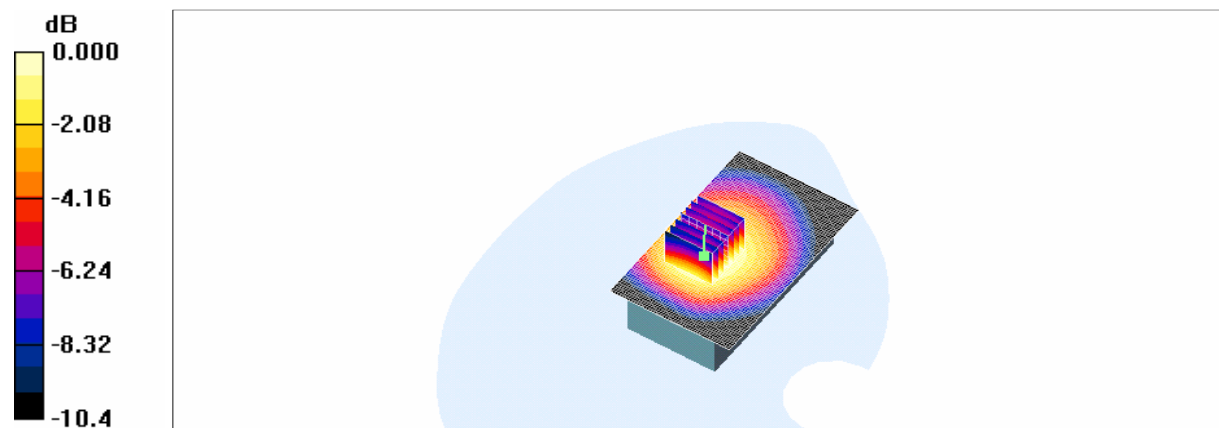
Body/Zoom Scan (5x5x7)/Cube 0: Measurement grid: dx=8mm, dy=8mm, dz=5mm

Reference Value = 10.6 V/m; Power Drift = 0.085 dB

Peak SAR (extrapolated) = 1.47 W/kg

SAR(1 g) = 1.09 mW/g; SAR(10 g) = 0.796 mW/g

Maximum value of SAR (measured) = 1.17 mW/g



WiFi b_Body_CH1

DUT: Wing200; Type: WiFi b; Serial: TY722FY00163

Communication System: Wireless LAN; Frequency: 2412 MHz; Duty Cycle: 1:1

Medium: Muscle 2450 Medium parameters used: $f = 2412$ MHz; $\sigma = 1.92$ mho/m; $\epsilon_r = 54.5$; $\rho = 1000$ kg/m³

Phantom section: Flat Section

DASY4 Configuration:

- Probe: EX3DV3 - SN3526; ConvF(8.08, 8.08, 8.08); Calibrated: 2007/8/29
- Sensor-Surface: 4mm (Mechanical Surface Detection)
- Electronics: DAE4 Sn547; Calibrated: 2007/10/1
- Phantom: SAM2; Type: SAM 4.0; Serial: TP:1270
- Measurement SW: DASY4, V4.7 Build 53; Postprocessing SW: SEMCAD, V1.8 Build 172

Body/Area Scan (61x91x1): Measurement grid: dx=15mm, dy=15mm

Maximum value of SAR (interpolated) = 0.370 mW/g

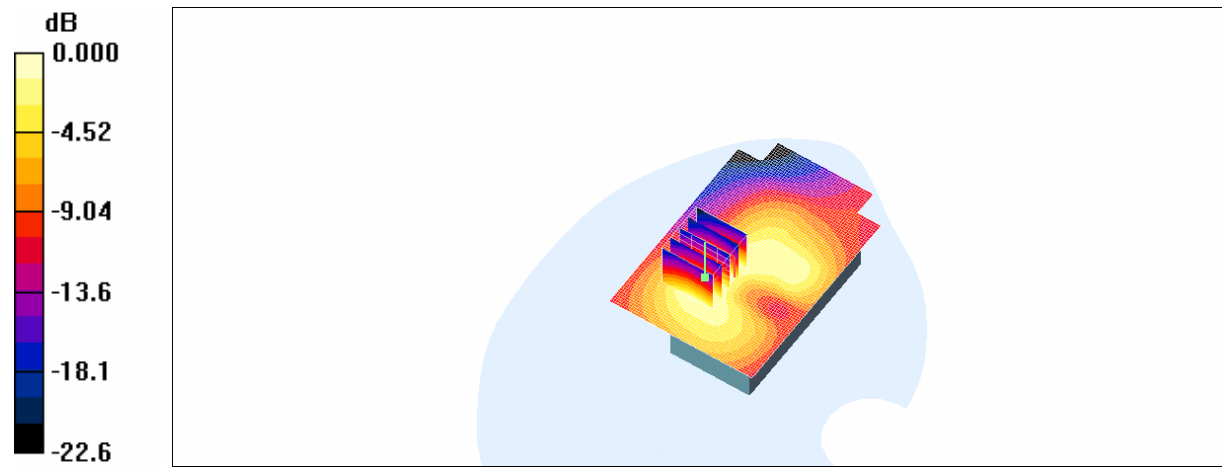
Body/Zoom Scan (5x5x7)/Cube 0: Measurement grid: dx=8mm, dy=8mm, dz=5mm

Reference Value = 7.83 V/m; Power Drift = -0.037 dB

Peak SAR (extrapolated) = 0.684 W/kg

SAR(1 g) = 0.352 mW/g; SAR(10 g) = 0.181 mW/g

Maximum value of SAR (measured) = 0.378 mW/g



0 dB = 0.378mW/g

WiFi b_Body_CH6

DUT: Wing200; Type: WiFi b; Serial: TY722FY00163

Communication System: Wireless LAN; Frequency: 2437 MHz; Duty Cycle: 1:1

Medium: Muscle 2450 Medium parameters used: $f = 2437$ MHz; $\sigma = 1.94$ mho/m; $\epsilon_r = 54.4$; $\rho = 1000$ kg/m³

Phantom section: Flat Section

DASY4 Configuration:

- Probe: EX3DV3 - SN3526; ConvF(8.08, 8.08, 8.08); Calibrated: 2007/8/29
- Sensor-Surface: 4mm (Mechanical Surface Detection)
- Electronics: DAE4 Sn547; Calibrated: 2007/10/1
- Phantom: SAM2; Type: SAM 4.0; Serial: TP:1270
- Measurement SW: DASY4, V4.7 Build 53; Postprocessing SW: SEMCAD, V1.8 Build 172

Body/Area Scan (61x91x1): Measurement grid: dx=15mm, dy=15mm

Maximum value of SAR (interpolated) = 0.433 mW/g

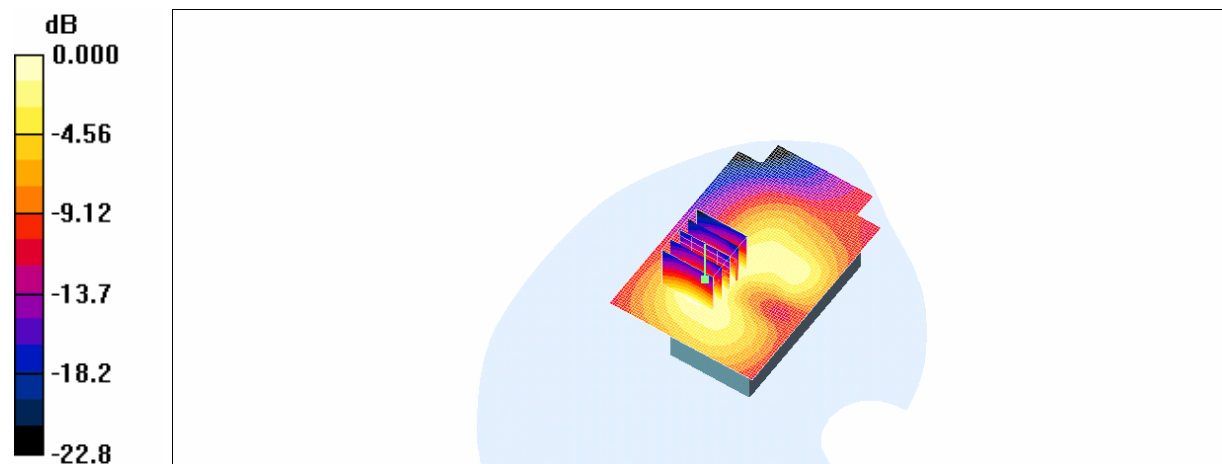
Body/Zoom Scan (5x5x7)/Cube 0: Measurement grid: dx=8mm, dy=8mm, dz=5mm

Reference Value = 8.50 V/m; Power Drift = 0.026 dB

Peak SAR (extrapolated) = 0.806 W/kg

SAR(1 g) = 0.411 mW/g; SAR(10 g) = 0.210 mW/g

Maximum value of SAR (measured) = 0.439 mW/g



0 dB = 0.439mW/g

WiFi b_Body_CH11

DUT: Wing200; Type: WiFi b; Serial: TY722FY00163

Communication System: Wireless LAN; Frequency: 2462 MHz; Duty Cycle: 1:1

Medium: Muscle 2450 Medium parameters used: $f = 2462$ MHz; $\sigma = 1.99$ mho/m; $\epsilon_r = 54.2$; $\rho = 1000$ kg/m³

Phantom section: Flat Section

DASY4 Configuration:

- Probe: EX3DV3 - SN3526; ConvF(8.08, 8.08, 8.08); Calibrated: 2007/8/29
- Sensor-Surface: 4mm (Mechanical Surface Detection)
- Electronics: DAE4 Sn547; Calibrated: 2007/10/1
- Phantom: SAM2; Type: SAM 4.0; Serial: TP:1270
- Measurement SW: DASY4, V4.7 Build 53; Postprocessing SW: SEMCAD, V1.8 Build 172

Body/Area Scan (61x91x1): Measurement grid: dx=15mm, dy=15mm

Maximum value of SAR (interpolated) = 0.467 mW/g

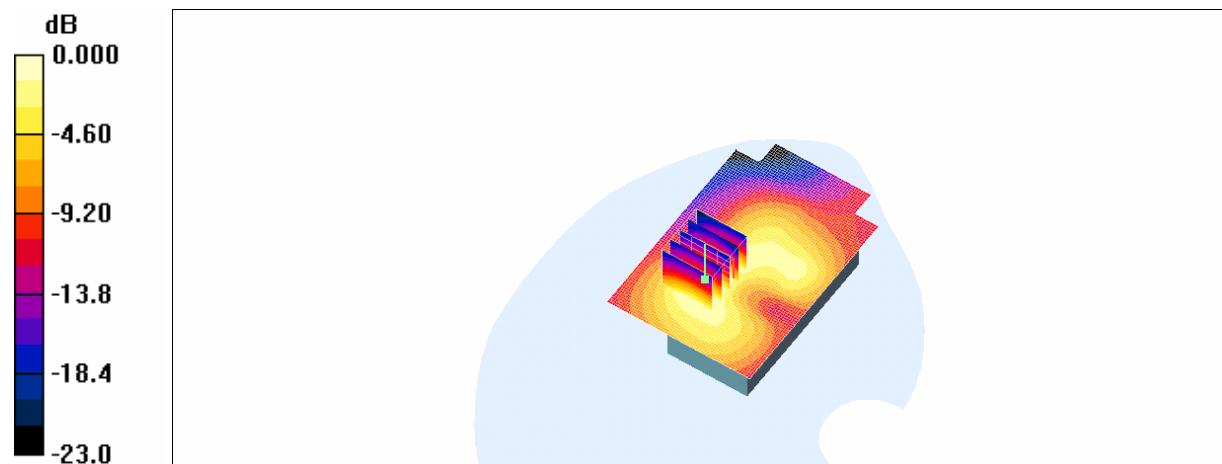
Body/Zoom Scan (5x5x7)/Cube 0: Measurement grid: dx=8mm, dy=8mm, dz=5mm

Reference Value = 8.55 V/m; Power Drift = 0.184 dB

Peak SAR (extrapolated) = 0.874 W/kg

SAR(1 g) = 0.442 mW/g; SAR(10 g) = 0.224 mW/g

Maximum value of SAR (measured) = 0.494 mW/g



0 dB = 0.494mW/g

WiFi g_Body_CH1

DUT: Wing200; Type: WiFi g; Serial: TY722FY00163

Communication System: Wireless LAN; Frequency: 2412 MHz; Duty Cycle: 1:1

Medium: Muscle 2450 Medium parameters used: $f = 2412$ MHz; $\sigma = 1.92$ mho/m; $\epsilon_r = 54.5$; $\rho = 1000$ kg/m³

Phantom section: Flat Section

DASY4 Configuration:

- Probe: EX3DV3 - SN3526; ConvF(8.08, 8.08, 8.08); Calibrated: 2007/8/29
- Sensor-Surface: 4mm (Mechanical Surface Detection)
- Electronics: DAE4 Sn547; Calibrated: 2007/10/1
- Phantom: SAM2; Type: SAM 4.0; Serial: TP:1270
- Measurement SW: DASY4, V4.7 Build 53; Postprocessing SW: SEMCAD, V1.8 Build 172

Body/Area Scan (61x91x1): Measurement grid: dx=15mm, dy=15mm

Maximum value of SAR (interpolated) = 0.143 mW/g

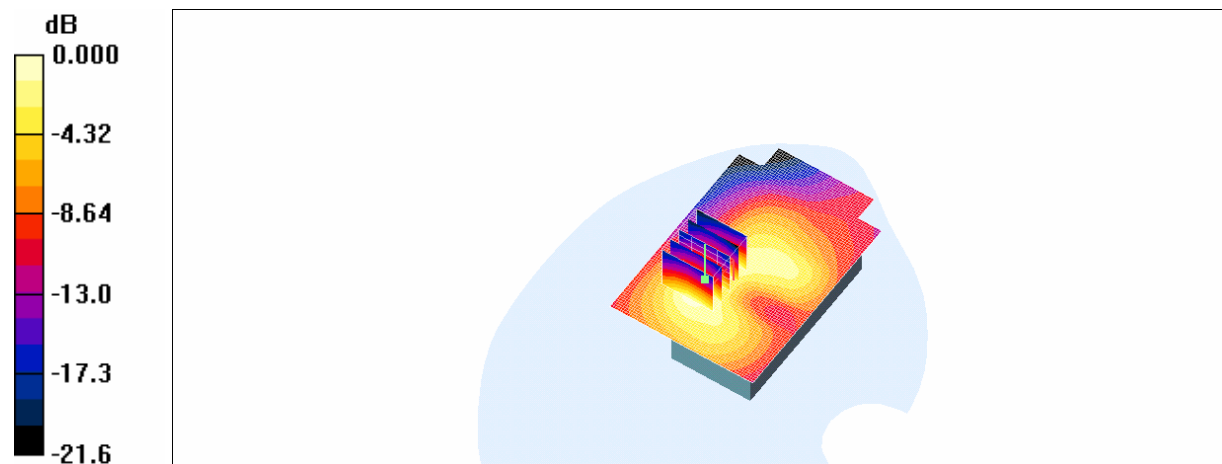
Body/Zoom Scan (5x5x7)/Cube 0: Measurement grid: dx=8mm, dy=8mm, dz=5mm

Reference Value = 4.64 V/m; Power Drift = -0.168 dB

Peak SAR (extrapolated) = 0.247 W/kg

SAR(1 g) = 0.127 mW/g; SAR(10 g) = 0.065 mW/g

Maximum value of SAR (measured) = 0.138 mW/g



WiFi g _Body_CH6

DUT: Wing200; Type: WiFi g; Serial: TY722FY00163;

Communication System: Wireless LAN; Frequency: 2437 MHz; Duty Cycle: 1:1

Medium: Muscle 2450 Medium parameters used: $f = 2437$ MHz; $\sigma = 1.94$ mho/m; $\epsilon_r = 54.4$; $\rho = 1000$ kg/m³

Phantom section: Flat Section

DASY4 Configuration:

- Probe: EX3DV3 - SN3526; ConvF(8.08, 8.08, 8.08); Calibrated: 2007/8/29
- Sensor-Surface: 4mm (Mechanical Surface Detection)
- Electronics: DAE4 Sn547; Calibrated: 2007/10/1
- Phantom: SAM2; Type: SAM 4.0; Serial: TP:1270
- Measurement SW: DASY4, V4.7 Build 53; Postprocessing SW: SEMCAD, V1.8 Build 172

Body/Area Scan (61x91x1): Measurement grid: dx=15mm, dy=15mm

Maximum value of SAR (interpolated) = 0.143 mW/g

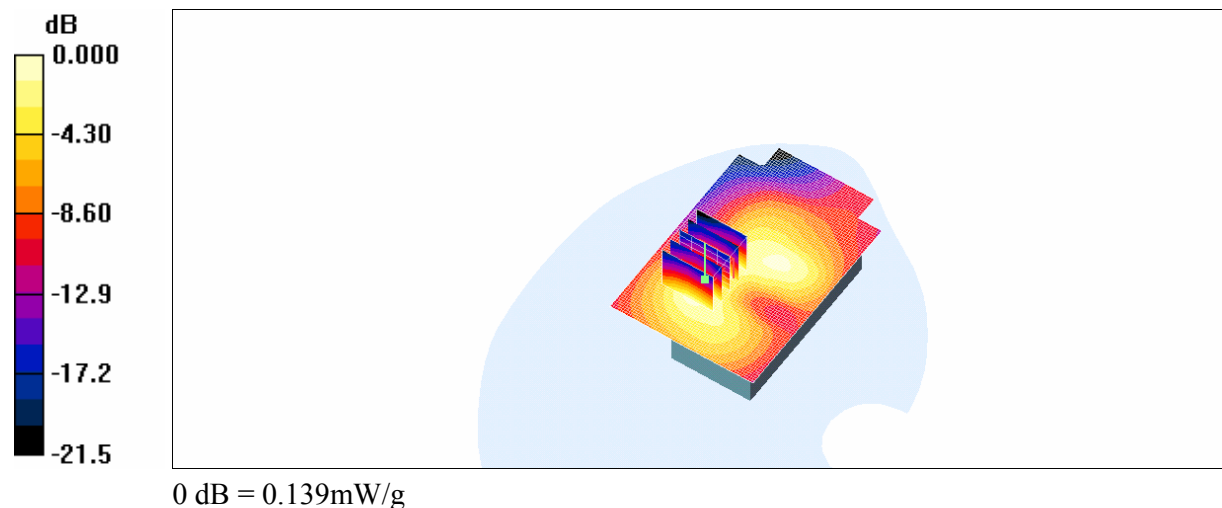
Body/Zoom Scan (5x5x7)/Cube 0: Measurement grid: dx=8mm, dy=8mm, dz=5mm

Reference Value = 4.58 V/m; Power Drift = -0.056 dB

Peak SAR (extrapolated) = 0.245 W/kg

SAR(1 g) = 0.127 mW/g; SAR(10 g) = 0.066 mW/g

Maximum value of SAR (measured) = 0.139 mW/g



WiFi g _Body_CH11

DUT: Wing200; Type: WiFi g; Serial: TY722FY00163

Communication System: Wireless LAN; Frequency: 2462 MHz; Duty Cycle: 1:1

Medium: Muscle 2450 Medium parameters used: $f = 2462$ MHz; $\sigma = 1.99$ mho/m; $\epsilon_r = 54.2$; $\rho = 1000$ kg/m³

Phantom section: Flat Section

DASY4 Configuration:

- Probe: EX3DV3 - SN3526; ConvF(8.08, 8.08, 8.08); Calibrated: 2007/8/29
- Sensor-Surface: 4mm (Mechanical Surface Detection)
- Electronics: DAE4 Sn547; Calibrated: 2007/10/1
- Phantom: SAM2; Type: SAM 4.0; Serial: TP:1270
- Measurement SW: DASY4, V4.7 Build 53; Postprocessing SW: SEMCAD, V1.8 Build 172

Body/Area Scan (61x91x1): Measurement grid: dx=15mm, dy=15mm

Maximum value of SAR (interpolated) = 0.164 mW/g

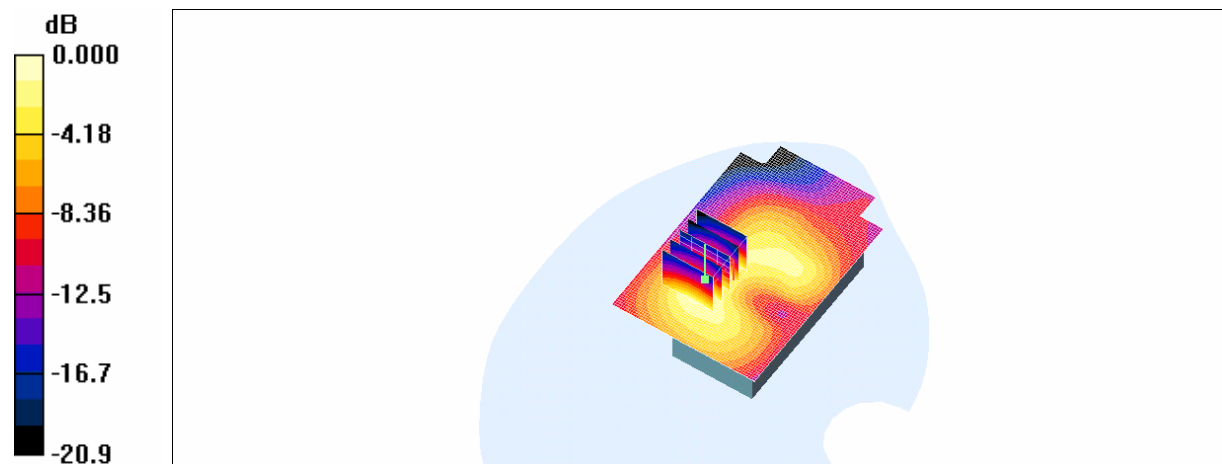
Body/Zoom Scan (5x5x7)/Cube 0: Measurement grid: dx=8mm, dy=8mm, dz=5mm

Reference Value = 4.95 V/m; Power Drift = 0.013 dB

Peak SAR (extrapolated) = 0.287 W/kg

SAR(1 g) = 0.148 mW/g; SAR(10 g) = 0.076 mW/g

Maximum value of SAR (measured) = 0.162 mW/g



0 dB = 0.162mW/g

RE Cheek_CH190_Slider off

DUT: Wing200; Type: GSM; Serial: TY722FY00207

Communication System: GSM 850; Frequency: 836.6 MHz; Duty Cycle: 1:8.3

Medium: Head 850 MHz Medium parameters used (interpolated): $f = 836.6$ MHz; $\sigma = 0.876$ mho/m; $\epsilon_r = 41.6$; $\rho = 1000$ kg/m³

Phantom section: Right Section

DASY4 Configuration:

- Probe: EX3DV3 - SN3526; ConvF(11.48, 11.48, 11.48); Calibrated: 2007/8/29
- Sensor-Surface: 4mm (Mechanical Surface Detection)
- Electronics: DAE4 Sn679; Calibrated: 2007/4/20
- Phantom: SAM1; Type: SAM 4.0; Serial: TP:1419
- Measurement SW: DASY4, V4.7 Build 53; Postprocessing SW: SEMCAD, V1.8 Build 172

RE_Cheek/Area Scan (41x81x1): Measurement grid: dx=15mm, dy=15mm

Maximum value of SAR (interpolated) = 0.402 mW/g

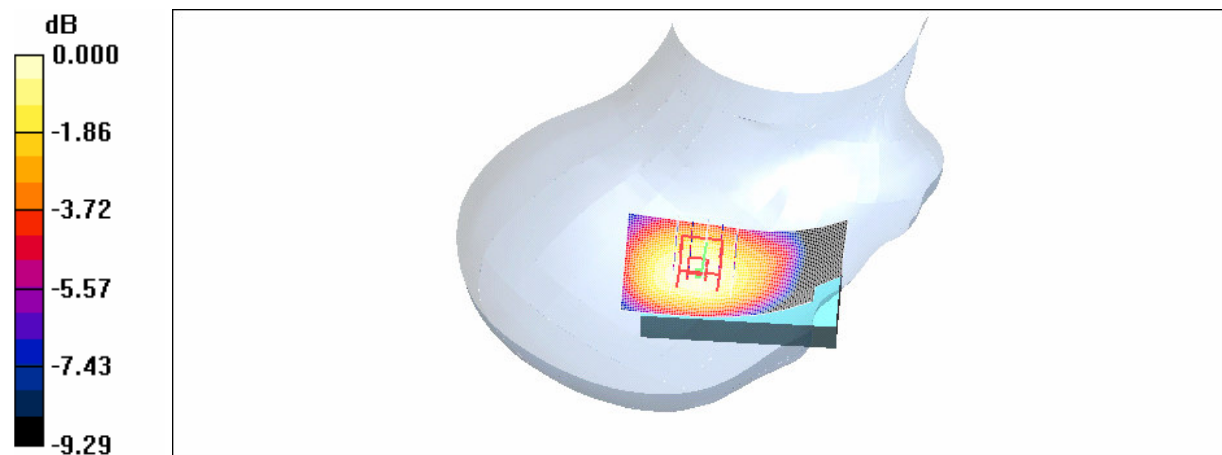
RE_Cheek/Zoom Scan (5x5x7)/Cube 0: Measurement grid: dx=8mm, dy=8mm, dz=5mm

Reference Value = 19.0 V/m; Power Drift = -0.210 dB

Peak SAR (extrapolated) = 0.493 W/kg

SAR(1 g) = 0.380 mW/g; SAR(10 g) = 0.274 mW/g

Maximum value of SAR (measured) = 0.402 mW/g



0 dB = 0.402mW/g

LE Cheek_CH190_Slider off

DUT: Wing200; Type: GSM; Serial: TY722FY00207

Communication System: GSM 850; Frequency: 836.6 MHz; Duty Cycle: 1:8.3

Medium: Head 850 MHz Medium parameters used (interpolated): $f = 836.6$ MHz; $\sigma = 0.876$ mho/m; $\epsilon_r = 41.6$; $\rho = 1000$ kg/m³

Phantom section: Left Section

DASY4 Configuration:

- Probe: EX3DV3 - SN3526; ConvF(11.48, 11.48, 11.48); Calibrated: 2007/8/29
- Sensor-Surface: 4mm (Mechanical Surface Detection)
- Electronics: DAE4 Sn679; Calibrated: 2007/4/20
- Phantom: SAM1; Type: SAM 4.0; Serial: TP:1419
- Measurement SW: DASY4, V4.7 Build 53; Postprocessing SW: SEMCAD, V1.8 Build 172

LE_Cheek/Area Scan (41x81x1): Measurement grid: dx=15mm, dy=15mm

Maximum value of SAR (interpolated) = 0.386 mW/g

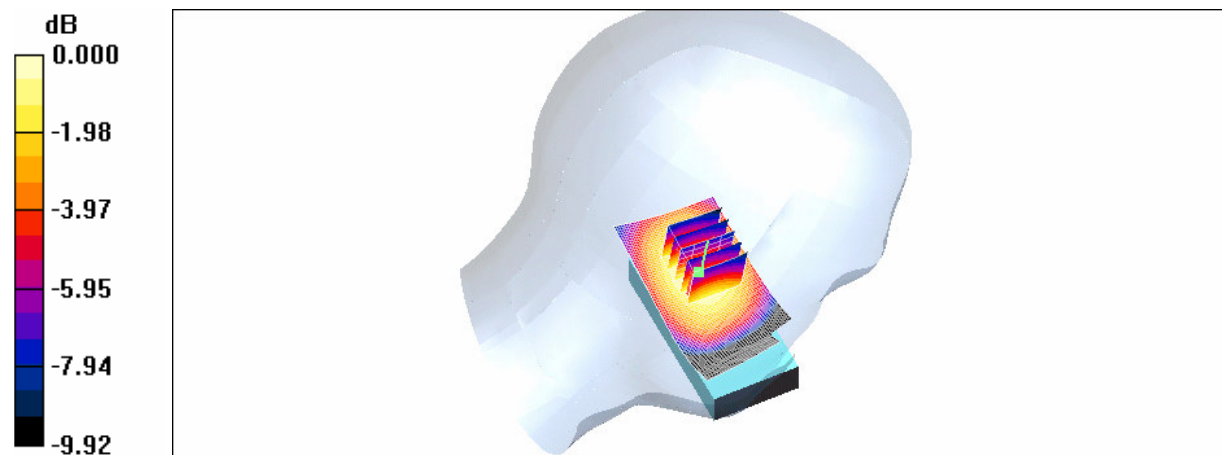
LE_Cheek/Zoom Scan (5x5x7)/Cube 0: Measurement grid: dx=8mm, dy=8mm, dz=5mm

Reference Value = 17.8 V/m; Power Drift = -0.078 dB

Peak SAR (extrapolated) = 0.481 W/kg

SAR(1 g) = 0.364 mW/g; SAR(10 g) = 0.260 mW/g

Maximum value of SAR (measured) = 0.383 mW/g



RE Tilt_CH190_Slider off

DUT: Wing200; Type: GSM; Serial: TY722FY00207

Communication System: GSM 850; Frequency: 836.6 MHz; Duty Cycle: 1:8.3

Medium: Head 850 MHz Medium parameters used (interpolated): $f = 836.6$ MHz; $\sigma = 0.876$ mho/m; $\epsilon_r = 41.6$; $\rho = 1000$ kg/m³

Phantom section: Right Section

DASY4 Configuration:

- Probe: EX3DV3 - SN3526; ConvF(11.48, 11.48, 11.48); Calibrated: 2007/8/29
- Sensor-Surface: 4mm (Mechanical Surface Detection)
- Electronics: DAE4 Sn679; Calibrated: 2007/4/20
- Phantom: SAM1; Type: SAM 4.0; Serial: TP:1419
- Measurement SW: DASY4, V4.7 Build 53; Postprocessing SW: SEMCAD, V1.8 Build 172

RE_tilt/Area Scan (41x81x1): Measurement grid: dx=15mm, dy=15mm

Maximum value of SAR (interpolated) = 0.285 mW/g

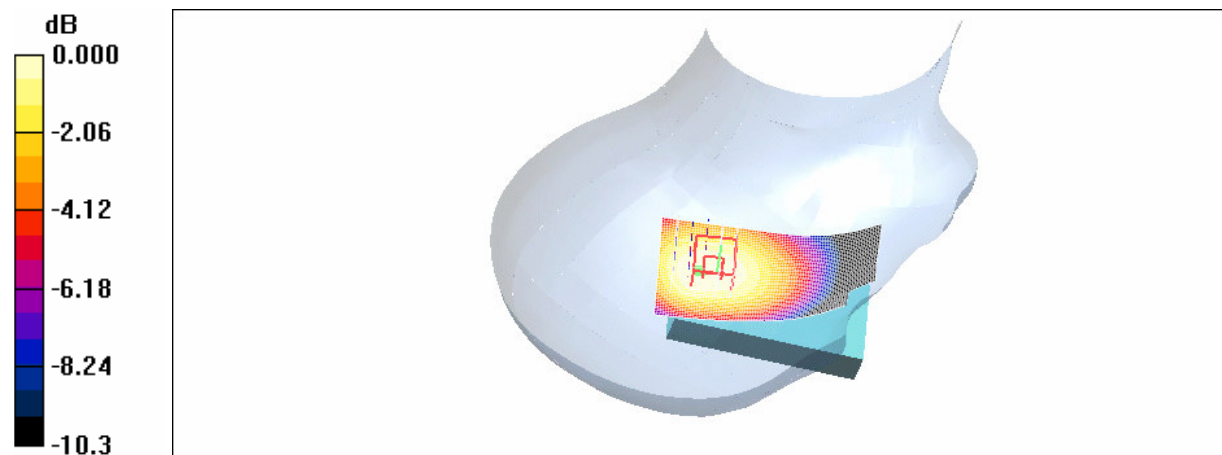
RE_tilt/Zoom Scan (5x5x7)/Cube 0: Measurement grid: dx=8mm, dy=8mm, dz=5mm

Reference Value = 17.4 V/m; Power Drift = 0.033 dB

Peak SAR (extrapolated) = 0.337 W/kg

SAR(1 g) = 0.265 mW/g; SAR(10 g) = 0.195 mW/g

Maximum value of SAR (measured) = 0.280 mW/g



LE Tilt_CH190_Slider off

DUT: Wing200; Type: GSM; Serial: TY722FY00207

Communication System: GSM 850; Frequency: 836.6 MHz; Duty Cycle: 1:8.3

Medium: Head 850 MHz Medium parameters used (interpolated): $f = 836.6$ MHz; $\sigma = 0.876$ mho/m; $\epsilon_r = 41.6$; $\rho = 1000$ kg/m³

Phantom section: Left Section

DASY4 Configuration:

- Probe: EX3DV3 - SN3526; ConvF(11.48, 11.48, 11.48); Calibrated: 2007/8/29
- Sensor-Surface: 4mm (Mechanical Surface Detection)
- Electronics: DAE4 Sn679; Calibrated: 2007/4/20
- Phantom: SAM1; Type: SAM 4.0; Serial: TP:1419
- Measurement SW: DASY4, V4.7 Build 53; Postprocessing SW: SEMCAD, V1.8 Build 172

LE_Tilt/Area Scan (41x81x1): Measurement grid: dx=15mm, dy=15mm

Maximum value of SAR (interpolated) = 0.268 mW/g

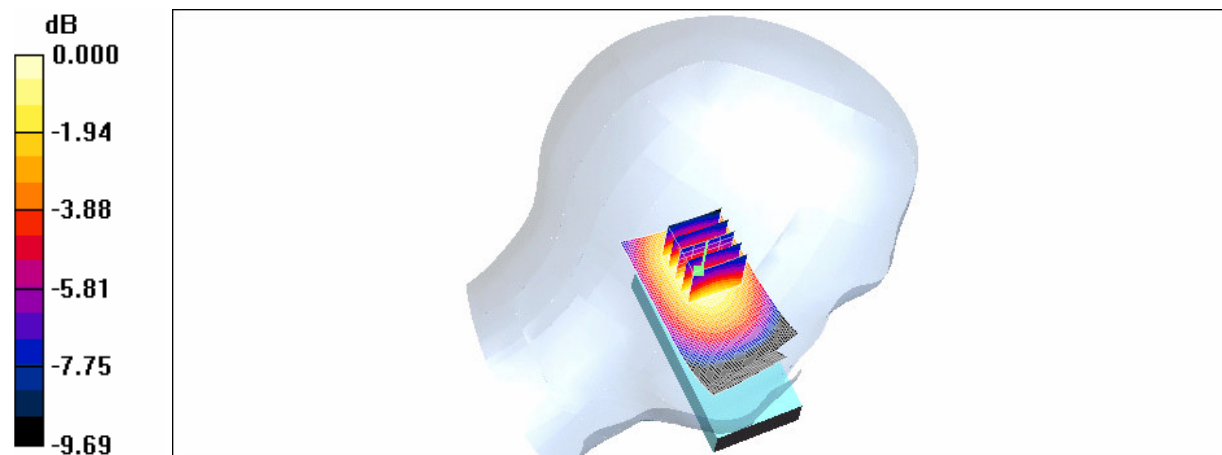
LE_Tilt/Zoom Scan (5x5x7)/Cube 0: Measurement grid: dx=8mm, dy=8mm, dz=5mm

Reference Value = 16.3 V/m; Power Drift = 0.003 dB

Peak SAR (extrapolated) = 0.334 W/kg

SAR(1 g) = 0.249 mW/g; SAR(10 g) = 0.177 mW/g

Maximum value of SAR (measured) = 0.265 mW/g



RE Cheek_CH190_Slider on

DUT: Wing200; Type: WCDMA; Serial: TY722FY00207

Communication System: GSM 850; Frequency: 836.6 MHz; Duty Cycle: 1:8.3
Medium: Head 850 MHz Medium parameters used (interpolated): $f = 836.6$ MHz; $\sigma = 0.876$ mho/m; $\epsilon_r = 41.6$; $\rho = 1000$ kg/m³
Phantom section: Right Section

DASY4 Configuration:

- Probe: EX3DV3 - SN3526; ConvF(11.48, 11.48, 11.48); Calibrated: 2007/8/29
- Sensor-Surface: 4mm (Mechanical Surface Detection)
- Electronics: DAE4 Sn679; Calibrated: 2007/4/20
- Phantom: SAM1; Type: SAM 4.0; Serial: TP:1419
- Measurement SW: DASY4, V4.7 Build 53; Postprocessing SW: SEMCAD, V1.8 Build 172

LE_Cheek/Area Scan (61x81x1): Measurement grid: dx=15mm, dy=15mm

Maximum value of SAR (interpolated) = 0.246 mW/g

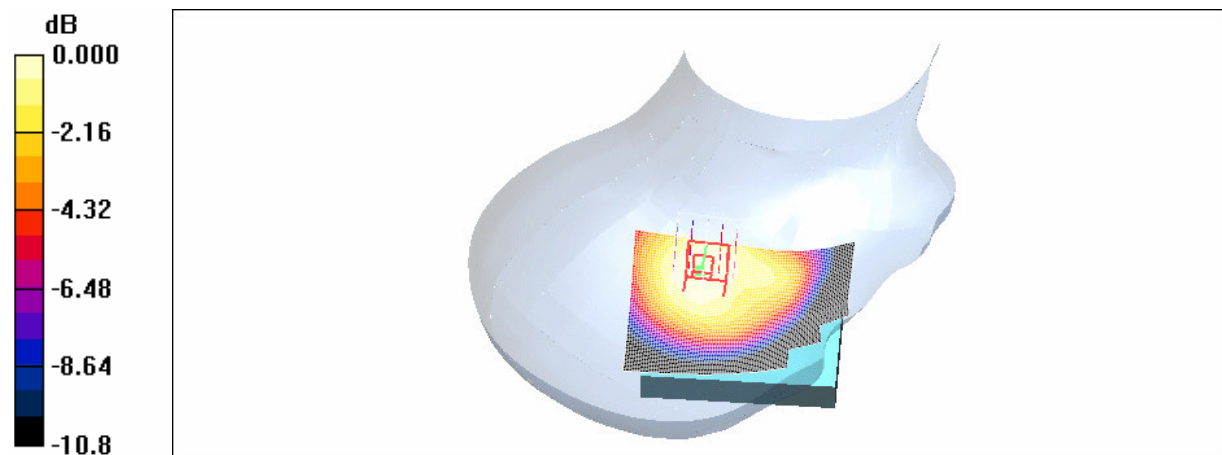
LE_Cheek/Zoom Scan (5x5x7)/Cube 0: Measurement grid: dx=8mm, dy=8mm, dz=5mm

Reference Value = 13.5 V/m; Power Drift = -0.059 dB

Peak SAR (extrapolated) = 0.289 W/kg

SAR(1 g) = 0.223 mW/g; SAR(10 g) = 0.168 mW/g

Maximum value of SAR (measured) = 0.235 mW/g



0 dB = 0.235mW/g

LE Cheek_CH190_Slider on

DUT: Wing200; Type: WCDMA; Serial: TY722FY00207

Communication System: GSM 850; Frequency: 836.6 MHz; Duty Cycle: 1:8.3

Medium: Head 850 MHz Medium parameters used (interpolated): $f = 836.6$ MHz; $\sigma = 0.876$ mho/m; $\epsilon_r = 41.6$; $\rho = 1000$ kg/m³

Phantom section: Left Section

DASY4 Configuration:

- Probe: EX3DV3 - SN3526; ConvF(11.48, 11.48, 11.48); Calibrated: 2007/8/29
- Sensor-Surface: 4mm (Mechanical Surface Detection)
- Electronics: DAE4 Sn679; Calibrated: 2007/4/20
- Phantom: SAM1; Type: SAM 4.0; Serial: TP:1419
- Measurement SW: DASY4, V4.7 Build 53; Postprocessing SW: SEMCAD, V1.8 Build 172

LE_Cheek/Area Scan (61x81x1): Measurement grid: dx=15mm, dy=15mm

Maximum value of SAR (interpolated) = 0.334 mW/g

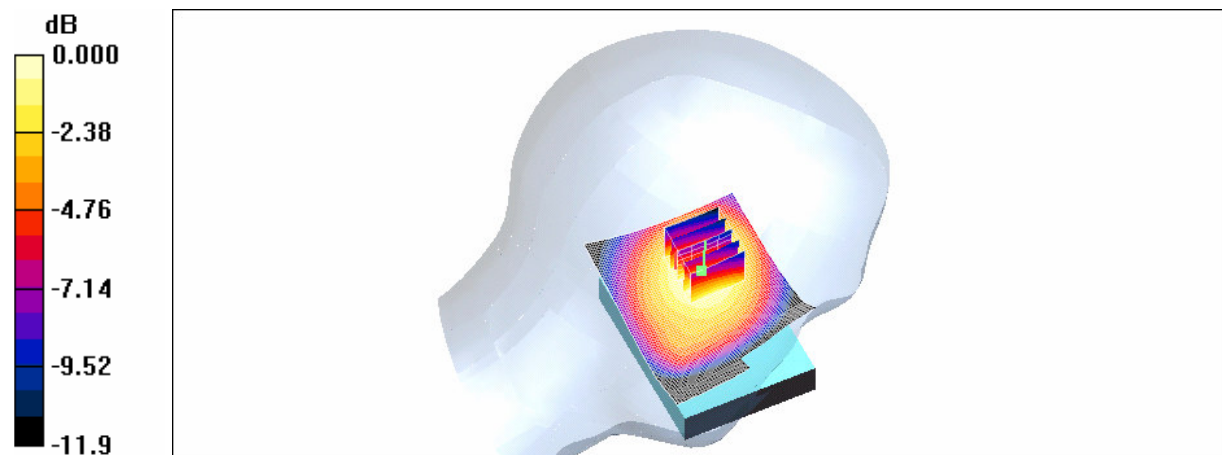
LE_Cheek/Zoom Scan (5x5x7)/Cube 0: Measurement grid: dx=8mm, dy=8mm, dz=5mm

Reference Value = 14.3 V/m; Power Drift = -0.126 dB

Peak SAR (extrapolated) = 0.461 W/kg

SAR(1 g) = 0.319 mW/g; SAR(10 g) = 0.218 mW/g

Maximum value of SAR (measured) = 0.342 mW/g



RE Tilt_CH190_Slider on

DUT: Wing200; Type: WCDMA; Serial: TY722FY00207

Communication System: GSM 850; Frequency: 836.6 MHz; Duty Cycle: 1:8.3

Medium: Head 850 MHz Medium parameters used (interpolated): $f = 836.6$ MHz; $\sigma = 0.876$ mho/m; $\epsilon_r = 41.6$; $\rho = 1000$ kg/m³

Phantom section: Right Section

DASY4 Configuration:

- Probe: EX3DV3 - SN3526; ConvF(11.48, 11.48, 11.48); Calibrated: 2007/8/29
- Sensor-Surface: 4mm (Mechanical Surface Detection)
- Electronics: DAE4 Sn679; Calibrated: 2007/4/20
- Phantom: SAM1; Type: SAM 4.0; Serial: TP:1419
- Measurement SW: DASY4, V4.7 Build 53; Postprocessing SW: SEMCAD, V1.8 Build 172

RE_Tilt/Area Scan (61x81x1): Measurement grid: dx=15mm, dy=15mm

Maximum value of SAR (interpolated) = 0.198 mW/g

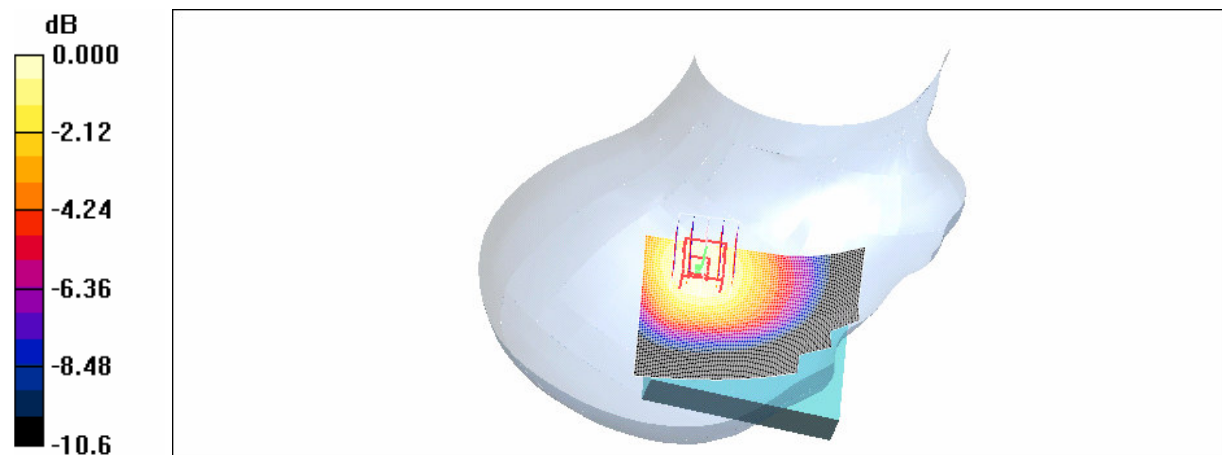
RE_Tilt/Zoom Scan (5x5x7)/Cube 0: Measurement grid: dx=8mm, dy=8mm, dz=5mm

Reference Value = 11.9 V/m; Power Drift = -0.051 dB

Peak SAR (extrapolated) = 0.233 W/kg

SAR(1 g) = 0.182 mW/g; SAR(10 g) = 0.134 mW/g

Maximum value of SAR (measured) = 0.191 mW/g



LE Tilt_CH190_Slider on

DUT: Wing200; Type: WCDMA; Serial: TY722FY00207

Communication System: GSM 850; Frequency: 836.6 MHz; Duty Cycle: 1:8.3

Medium: Head 850 MHz Medium parameters used (interpolated): $f = 836.6$ MHz; $\sigma = 0.876$ mho/m; $\epsilon_r = 41.6$; $\rho = 1000$ kg/m³

Phantom section: Left Section

DASY4 Configuration:

- Probe: EX3DV3 - SN3526; ConvF(11.48, 11.48, 11.48); Calibrated: 2007/8/29
- Sensor-Surface: 4mm (Mechanical Surface Detection)
- Electronics: DAE4 Sn679; Calibrated: 2007/4/20
- Phantom: SAM1; Type: SAM 4.0; Serial: TP:1419
- Measurement SW: DASY4, V4.7 Build 53; Postprocessing SW: SEMCAD, V1.8 Build 172

LE_Tilt/Area Scan (61x81x1): Measurement grid: dx=15mm, dy=15mm

Maximum value of SAR (interpolated) = 0.337 mW/g

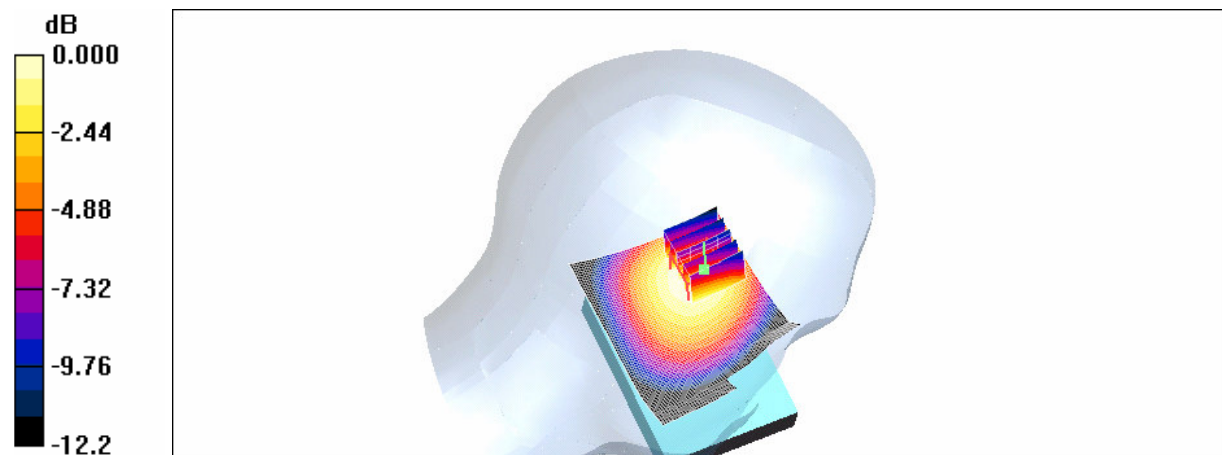
LE_Tilt/Zoom Scan (5x5x7)/Cube 0: Measurement grid: dx=8mm, dy=8mm, dz=5mm

Reference Value = 13.4 V/m; Power Drift = -0.109 dB

Peak SAR (extrapolated) = 0.474 W/kg

SAR(1 g) = 0.316 mW/g; SAR(10 g) = 0.216 mW/g

Maximum value of SAR (measured) = 0.331 mW/g



0 dB = 0.331mW/g

Body_CH128

DUT: Wing200; Type: GSM; Serial: TY722FY00207

Communication System: GSM 850; Frequency: 824.2 MHz; Duty Cycle: 1:4
Medium: Muscle 850 MHz Medium parameters used (interpolated): $f = 824.2$ MHz; $\sigma = 0.953$ mho/m;
 $\epsilon_r = 56.3$; $\rho = 1000$ kg/m³
Phantom section: Flat Section

DASY4 Configuration:

- Probe: EX3DV3 - SN3526; ConvF(10.93, 10.93, 10.93); Calibrated: 2007/8/29
- Sensor-Surface: 4mm (Mechanical Surface Detection)
- Electronics: DAE4 Sn679; Calibrated: 2007/4/20
- Phantom: SAM1; Type: SAM 4.0; Serial: TP:1270
- Measurement SW: DASY4, V4.7 Build 53; Postprocessing SW: SEMCAD, V1.8 Build 172

Body/Area Scan (41x81x1): Measurement grid: dx=15mm, dy=15mm

Maximum value of SAR (interpolated) = 1.62 mW/g

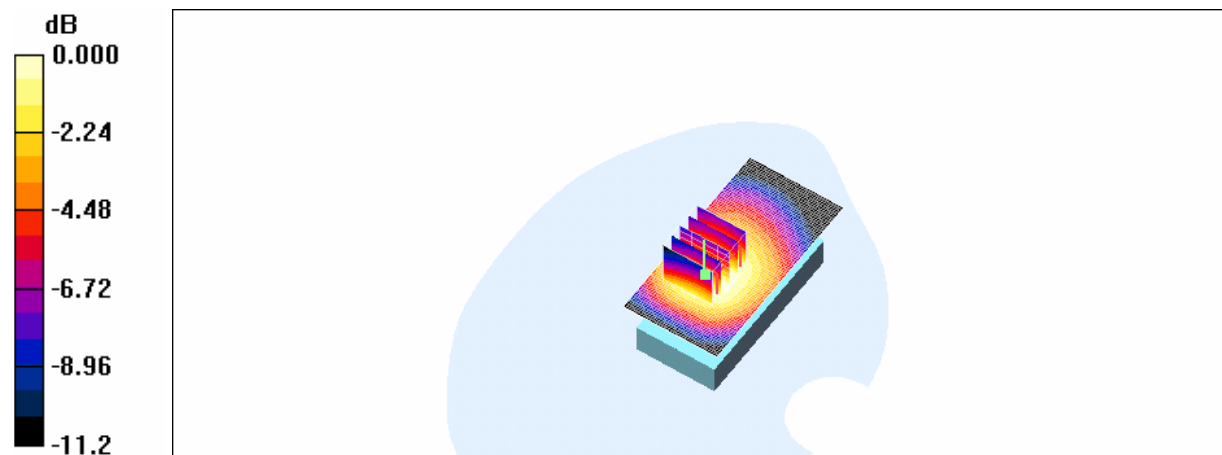
Body/Zoom Scan (5x5x7)/Cube 0: Measurement grid: dx=8mm, dy=8mm, dz=5mm

Reference Value = 14.3 V/m; Power Drift = -0.127 dB

Peak SAR (extrapolated) = 2.01 W/kg

SAR(1 g) = 1.51 mW/g; SAR(10 g) = 1.09 mW/g

Maximum value of SAR (measured) = 1.59 mW/g



0 dB = 1.59mW/g

Body_CH190

DUT: Wing200; Type: GSM; Serial: TY722FY00207

Communication System: GSM 850; Frequency: 836.6 MHz; Duty Cycle: 1:4

Medium: Muscle 850 MHz Medium parameters used (interpolated): $f = 836.6$ MHz; $\sigma = 0.964$ mho/m;

$\epsilon_r = 56.2$; $\rho = 1000$ kg/m³

Phantom section: Flat Section

DASY4 Configuration:

- Probe: EX3DV3 - SN3526; ConvF(10.93, 10.93, 10.93); Calibrated: 2007/8/29
- Sensor-Surface: 4mm (Mechanical Surface Detection)
- Electronics: DAE4 Sn679; Calibrated: 2007/4/20
- Phantom: SAM1; Type: SAM 4.0; Serial: TP:1270
- Measurement SW: DASY4, V4.7 Build 53; Postprocessing SW: SEMCAD, V1.8 Build 172

Body/Area Scan (41x81x1): Measurement grid: dx=15mm, dy=15mm

Maximum value of SAR (interpolated) = 1.66 mW/g

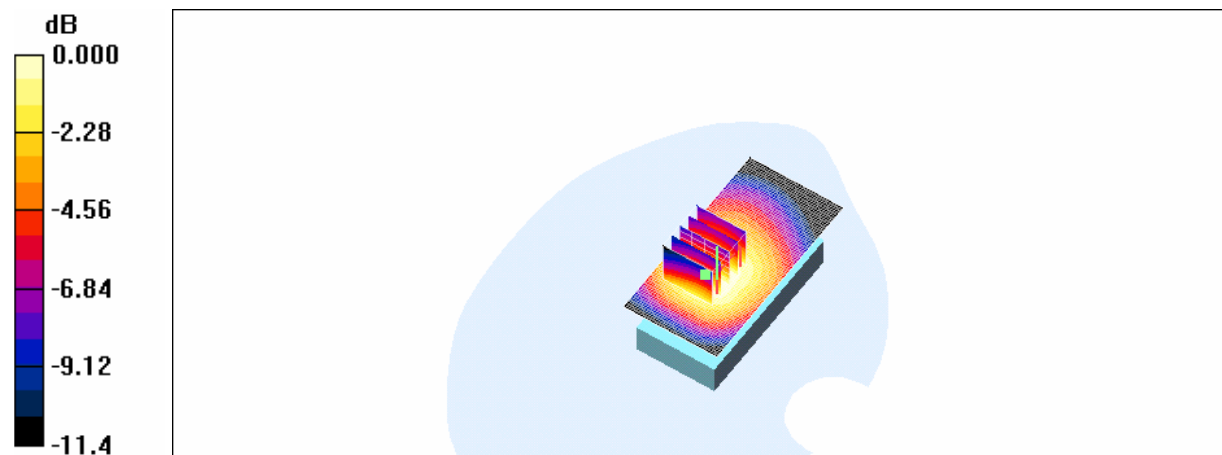
Body/Zoom Scan (5x5x7)/Cube 0: Measurement grid: dx=8mm, dy=8mm, dz=5mm

Reference Value = 14.3 V/m; Power Drift = -0.133 dB

Peak SAR (extrapolated) = 2.05 W/kg

SAR(1 g) = 1.55 mW/g; SAR(10 g) = 1.12 mW/g

Maximum value of SAR (measured) = 1.62 mW/g



Body_CH251

DUT: Wing200; Type: GSM; Serial: TY722FY00207

Communication System: GSM 850; Frequency: 848.8 MHz; Duty Cycle: 1:4

Medium: Muscle 850 MHz Medium parameters used (interpolated): $f = 848.8$ MHz; $\sigma = 0.976$ mho/m;

$\epsilon_r = 56$; $\rho = 1000$ kg/m³

Phantom section: Flat Section

DASY4 Configuration:

- Probe: EX3DV3 - SN3526; ConvF(10.93, 10.93, 10.93); Calibrated: 2007/8/29
- Sensor-Surface: 4mm (Mechanical Surface Detection)
- Electronics: DAE4 Sn679; Calibrated: 2007/4/20
- Phantom: SAM1; Type: SAM 4.0; Serial: TP:1270
- Measurement SW: DASY4, V4.7 Build 53; Postprocessing SW: SEMCAD, V1.8 Build 172

Body/Area Scan (41x81x1): Measurement grid: dx=15mm, dy=15mm

Maximum value of SAR (interpolated) = 1.66 mW/g

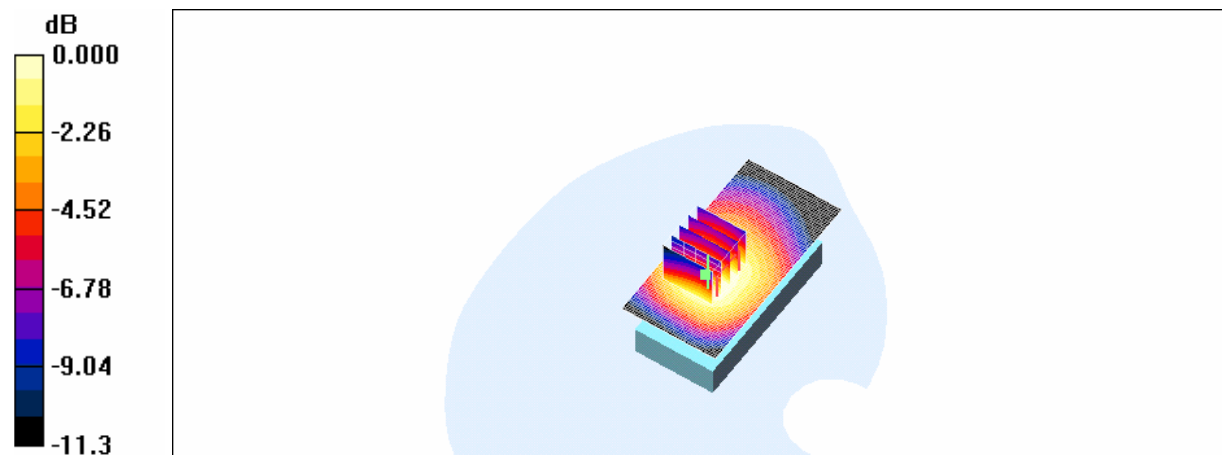
Body/Zoom Scan (5x5x7)/Cube 0: Measurement grid: dx=8mm, dy=8mm, dz=5mm

Reference Value = 14.4 V/m; Power Drift = -0.060 dB

Peak SAR (extrapolated) = 2.14 W/kg

SAR(1 g) = 1.58 mW/g; SAR(10 g) = 1.13 mW/g

Maximum value of SAR (measured) = 1.64 mW/g



0 dB = 1.64mW/g

Body_CH251_ repeated in EUT front to Phantom

DUT: Wing200; Type: GSM; Serial: TY722FY00207

Communication System: GSM 850; Frequency: 848.8 MHz; Duty Cycle: 1:4

Medium: Muscle 850 MHz Medium parameters used (interpolated): $f = 848.8$ MHz; $\sigma = 0.976$ mho/m;

$\epsilon_r = 56$; $\rho = 1000$ kg/m³

Phantom section: Flat Section

DASY4 Configuration:

- Probe: EX3DV3 - SN3526; ConvF(10.93, 10.93, 10.93); Calibrated: 2007/8/29
- Sensor-Surface: 4mm (Mechanical Surface Detection)
- Electronics: DAE4 Sn679; Calibrated: 2007/4/20
- Phantom: SAM1; Type: SAM 4.0; Serial: TP:1270
- Measurement SW: DASY4, V4.7 Build 53; Postprocessing SW: SEMCAD, V1.8 Build 172

Body/Area Scan (41x81x1): Measurement grid: dx=15mm, dy=15mm

Maximum value of SAR (interpolated) = 0.605 mW/g

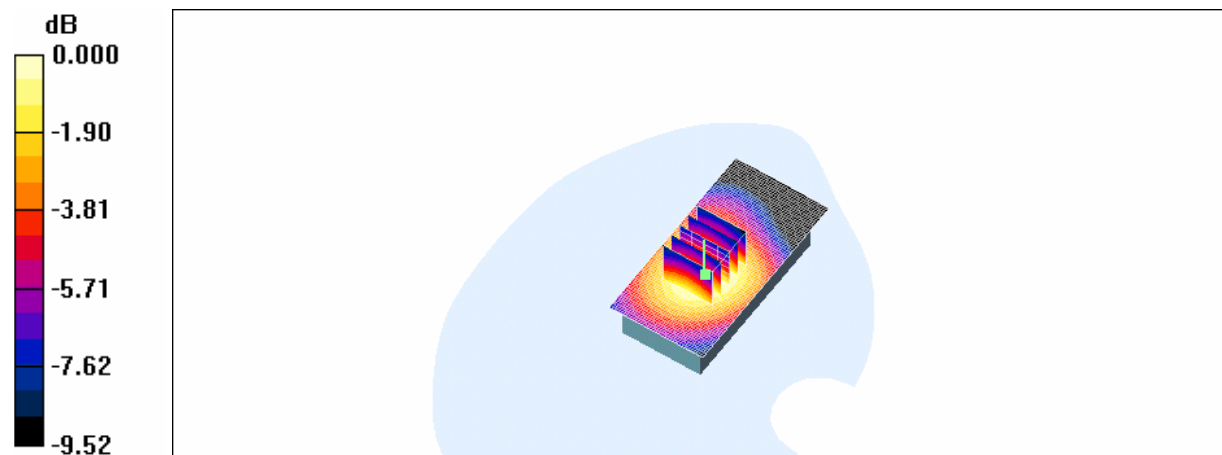
Body/Zoom Scan (5x5x7)/Cube 0: Measurement grid: dx=8mm, dy=8mm, dz=5mm

Reference Value = 13.9 V/m; Power Drift = -0.082 dB

Peak SAR (extrapolated) = 0.729 W/kg

SAR(1 g) = 0.56 mW/g; SAR(10 g) = 0.412 mW/g

Maximum value of SAR (measured) = 0.602 mW/g



Body_CH251_repeated with MemoryCard active

DUT: Wing200; Type: GSM; Serial: TY722FY00207

Communication System: GSM 850; Frequency: 848.8 MHz; Duty Cycle: 1:4
Medium: Muscle 850 MHz Medium parameters used (interpolated): $f = 848.8$ MHz; $\sigma = 0.976$ mho/m;
 $\epsilon_r = 56$; $\rho = 1000$ kg/m³
Phantom section: Flat Section

DASY4 Configuration:

- Probe: EX3DV3 - SN3526; ConvF(10.93, 10.93, 10.93); Calibrated: 2007/8/29
- Sensor-Surface: 4mm (Mechanical Surface Detection)
- Electronics: DAE4 Sn679; Calibrated: 2007/4/20
- Phantom: SAM1; Type: SAM 4.0; Serial: TP:1270
- Measurement SW: DASY4, V4.7 Build 53; Postprocessing SW: SEMCAD, V1.8 Build 172

Body/Area Scan (41x81x1): Measurement grid: dx=15mm, dy=15mm

Maximum value of SAR (interpolated) = 1.66 mW/g

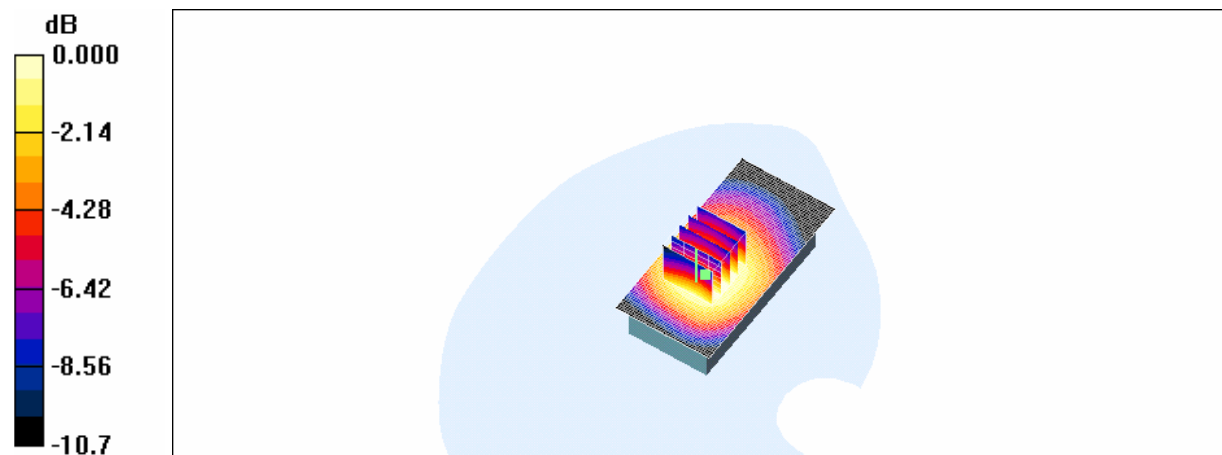
Body/Zoom Scan (5x5x7)/Cube 0: Measurement grid: dx=8mm, dy=8mm, dz=5mm

Reference Value = 15.0 V/m; Power Drift = -0.118 dB

Peak SAR (extrapolated) = 2.10 W/kg

SAR(1 g) = 1.56 mW/g; SAR(10 g) = 1.12 mW/g

Maximum value of SAR (measured) = 1.63 mW/g



0 dB = 1.63mW/g

Body_CH251_repeated with Bluetooth active

DUT: Wing200; Type: GSM; Serial: TY722FY00207

Communication System: GSM 850; Frequency: 848.8 MHz; Duty Cycle: 1:4

Medium: Muscle 850 MHz Medium parameters used (interpolated): $f = 848.8$ MHz; $\sigma = 0.976$ mho/m;

$\epsilon_r = 56$; $\rho = 1000$ kg/m³

Phantom section: Flat Section

DASY4 Configuration:

- Probe: EX3DV3 - SN3526; ConvF(10.93, 10.93, 10.93); Calibrated: 2007/8/29
- Sensor-Surface: 4mm (Mechanical Surface Detection)
- Electronics: DAE4 Sn679; Calibrated: 2007/4/20
- Phantom: SAM1; Type: SAM 4.0; Serial: TP:1270
- Measurement SW: DASY4, V4.7 Build 53; Postprocessing SW: SEMCAD, V1.8 Build 172

Body/Area Scan (41x81x1): Measurement grid: dx=15mm, dy=15mm

Maximum value of SAR (interpolated) = 1.71 mW/g

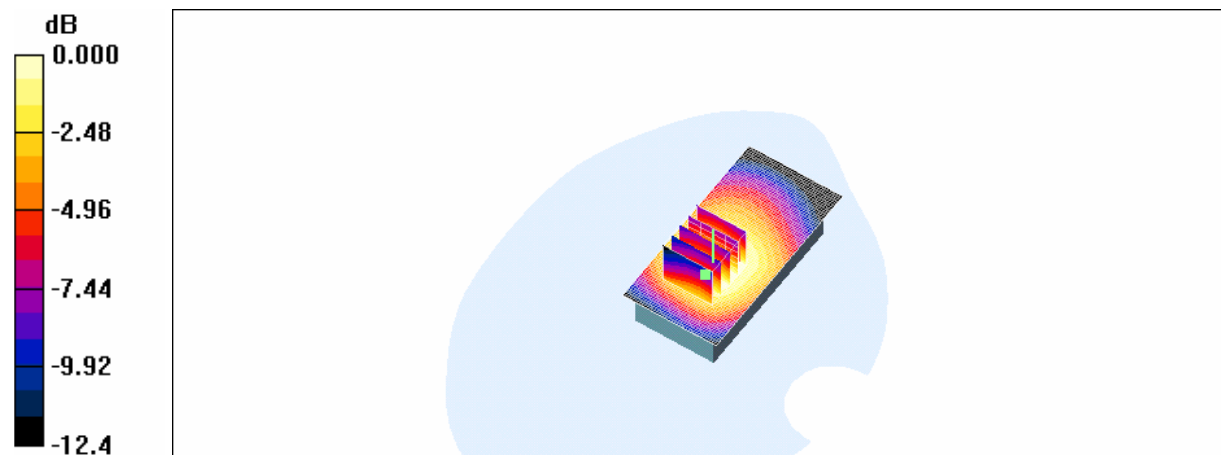
Body/Zoom Scan (5x5x7)/Cube 0: Measurement grid: dx=8mm, dy=8mm, dz=5mm

Reference Value = 15.5 V/m; Power Drift = -0.198 dB

Peak SAR (extrapolated) = 2.09 W/kg

SAR(1 g) = 1.57 mW/g; SAR(10 g) = 1.13 mW/g

Maximum value of SAR (measured) = 1.65 mW/g



0 dB = 1.65mW/g

Body_CH251_repeated with Samsung Battery

DUT: Wing200; Type: GSM; Serial: TY722FY00207

Communication System: GSM 850; Frequency: 848.8 MHz; Duty Cycle: 1:4

Medium: Muscle 850 MHz Medium parameters used (interpolated): $f = 848.8$ MHz; $\sigma = 0.976$ mho/m;

$\epsilon_r = 56$; $\rho = 1000$ kg/m³

Phantom section: Flat Section

DASY4 Configuration:

- Probe: EX3DV3 - SN3526; ConvF(10.93, 10.93, 10.93); Calibrated: 2007/8/29
- Sensor-Surface: 4mm (Mechanical Surface Detection)
- Electronics: DAE4 Sn679; Calibrated: 2007/4/20
- Phantom: SAM1; Type: SAM 4.0; Serial: TP:1270
- Measurement SW: DASY4, V4.7 Build 53; Postprocessing SW: SEMCAD, V1.8 Build 172

Body/Area Scan (41x81x1): Measurement grid: dx=15mm, dy=15mm

Maximum value of SAR (interpolated) = 1.58 mW/g

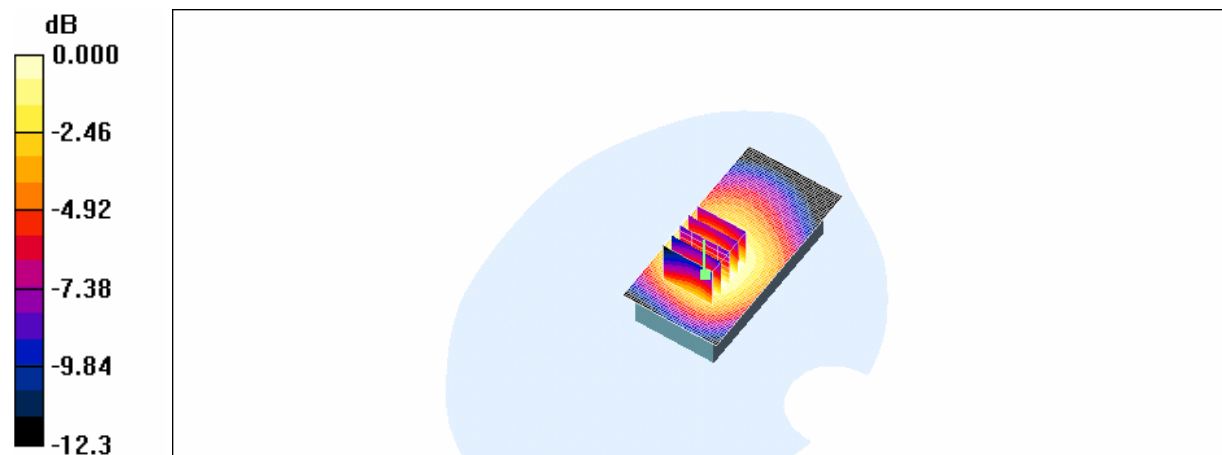
Body/Zoom Scan (5x5x7)/Cube 0: Measurement grid: dx=8mm, dy=8mm, dz=5mm

Reference Value = 15.0 V/m; Power Drift = -0.050 dB

Peak SAR (extrapolated) = 1.99 W/kg

SAR(1 g) = 1.49 mW/g; SAR(10 g) = 1.07 mW/g

Maximum value of SAR (measured) = 1.56 mW/g



0 dB = 1.56mW/g

Body_CH251_repeated with Sanyo Battery

DUT: Wing200; Type: GSM; Serial: TY722FY00207

Communication System: GSM 850; Frequency: 848.8 MHz; Duty Cycle: 1:4
Medium: Muscle 850 MHz Medium parameters used (interpolated): $f = 848.8$ MHz; $\sigma = 0.976$ mho/m;
 $\epsilon_r = 56$; $\rho = 1000$ kg/m³
Phantom section: Flat Section

DASY4 Configuration:

- Probe: EX3DV3 - SN3526; ConvF(10.93, 10.93, 10.93); Calibrated: 2007/8/29
- Sensor-Surface: 4mm (Mechanical Surface Detection)
- Electronics: DAE4 Sn679; Calibrated: 2007/4/20
- Phantom: SAM1; Type: SAM 4.0; Serial: TP:1270
- Measurement SW: DASY4, V4.7 Build 53; Postprocessing SW: SEMCAD, V1.8 Build 172

Body/Area Scan (41x81x1): Measurement grid: dx=15mm, dy=15mm

Maximum value of SAR (interpolated) = 1.65 mW/g

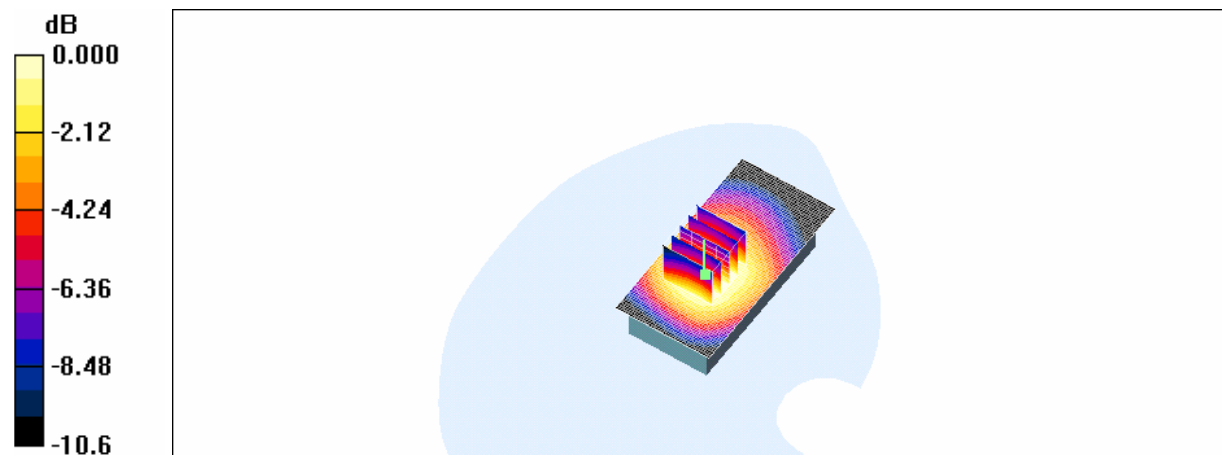
Body/Zoom Scan (5x5x7)/Cube 0: Measurement grid: dx=8mm, dy=8mm, dz=5mm

Reference Value = 15.2 V/m; Power Drift = -0.095 dB

Peak SAR (extrapolated) = 2.07 W/kg

SAR(1 g) = 1.54 mW/g; SAR(10 g) = 1.11 mW/g

Maximum value of SAR (measured) = 1.61 mW/g



Body_CH251_repeated with Headset 1 active

DUT: Wing200; Type: GSM; Serial: TY722FY00207

Communication System: GSM 850; Frequency: 848.8 MHz; Duty Cycle: 1:4

Medium: Muscle 850 MHz Medium parameters used (interpolated): $f = 848.8$ MHz; $\sigma = 0.976$ mho/m;

$\epsilon_r = 56$; $\rho = 1000$ kg/m³

Phantom section: Flat Section

DASY4 Configuration:

- Probe: EX3DV3 - SN3526; ConvF(10.93, 10.93, 10.93); Calibrated: 2007/8/29
- Sensor-Surface: 4mm (Mechanical Surface Detection)
- Electronics: DAE4 Sn679; Calibrated: 2007/4/20
- Phantom: SAM1; Type: SAM 4.0; Serial: TP:1270
- Measurement SW: DASY4, V4.7 Build 53; Postprocessing SW: SEMCAD, V1.8 Build 172

Body/Area Scan (41x81x1): Measurement grid: dx=15mm, dy=15mm

Maximum value of SAR (interpolated) = 1.39 mW/g

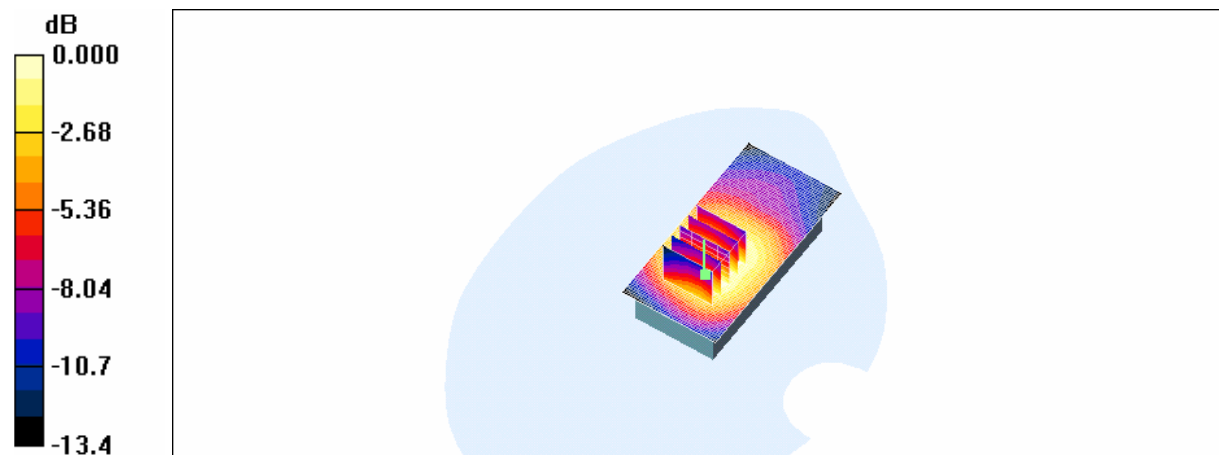
Body/Zoom Scan (5x5x7)/Cube 0: Measurement grid: dx=8mm, dy=8mm, dz=5mm

Reference Value = 14.3 V/m; Power Drift = -0.135 dB

Peak SAR (extrapolated) = 1.76 W/kg

SAR(1 g) = 1.28 mW/g; SAR(10 g) = 0.886 mW/g

Maximum value of SAR (measured) = 1.37 mW/g



0 dB = 1.37mW/g

Body_CH251_repeated with Headset 2 active

DUT: Wing200; Type: GSM; Serial: TY722FY00207

Communication System: GSM 850; Frequency: 848.8 MHz; Duty Cycle: 1:4

Medium: Muscle 850 MHz Medium parameters used (interpolated): $f = 848.8$ MHz; $\sigma = 0.976$ mho/m;

$\epsilon_r = 56$; $\rho = 1000$ kg/m³

Phantom section: Flat Section

DASY4 Configuration:

- Probe: EX3DV3 - SN3526; ConvF(10.93, 10.93, 10.93); Calibrated: 2007/8/29
- Sensor-Surface: 4mm (Mechanical Surface Detection)
- Electronics: DAE4 Sn679; Calibrated: 2007/4/20
- Phantom: SAM1; Type: SAM 4.0; Serial: TP:1270
- Measurement SW: DASY4, V4.7 Build 53; Postprocessing SW: SEMCAD, V1.8 Build 172

Body/Area Scan (41x81x1): Measurement grid: dx=15mm, dy=15mm

Maximum value of SAR (interpolated) = 1.37 mW/g

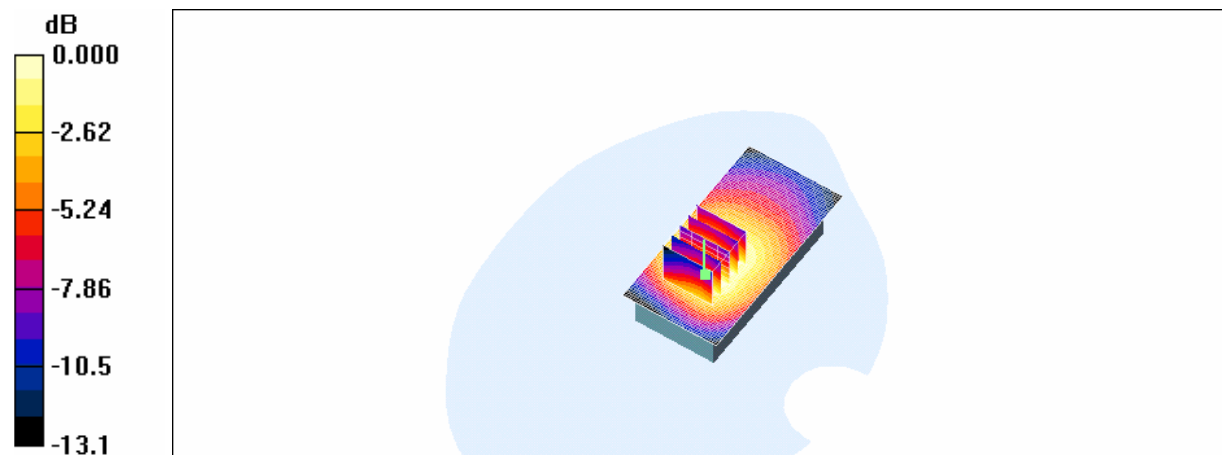
Body/Zoom Scan (5x5x7)/Cube 0: Measurement grid: dx=8mm, dy=8mm, dz=5mm

Reference Value = 12.8 V/m; Power Drift = -0.126 dB

Peak SAR (extrapolated) = 1.78 W/kg

SAR(1 g) = 1.29 mW/g; SAR(10 g) = 0.900 mW/g

Maximum value of SAR (measured) = 1.36 mW/g



0 dB = 1.36mW/g

Body_CH251_repeated with WiFi b active

DUT: Wing200; Type: GSM; Serial: TY722FY00207

Communication System: GSM 850; Frequency: 848.8 MHz; Duty Cycle: 1:4

Medium: Muscle 850 MHz Medium parameters used (interpolated): $f = 848.8$ MHz; $\sigma = 0.976$ mho/m;

$\epsilon_r = 56$; $\rho = 1000$ kg/m³

Phantom section: Flat Section

DASY4 Configuration:

- Probe: EX3DV3 - SN3526; ConvF(10.93, 10.93, 10.93); Calibrated: 2007/8/29
- Sensor-Surface: 4mm (Mechanical Surface Detection)
- Electronics: DAE4 Sn679; Calibrated: 2007/4/20
- Phantom: SAM1; Type: SAM 4.0; Serial: TP:1270
- Measurement SW: DASY4, V4.7 Build 53; Postprocessing SW: SEMCAD, V1.8 Build 172

Body/Area Scan (41x81x1): Measurement grid: dx=15mm, dy=15mm

Maximum value of SAR (interpolated) = 1.37 mW/g

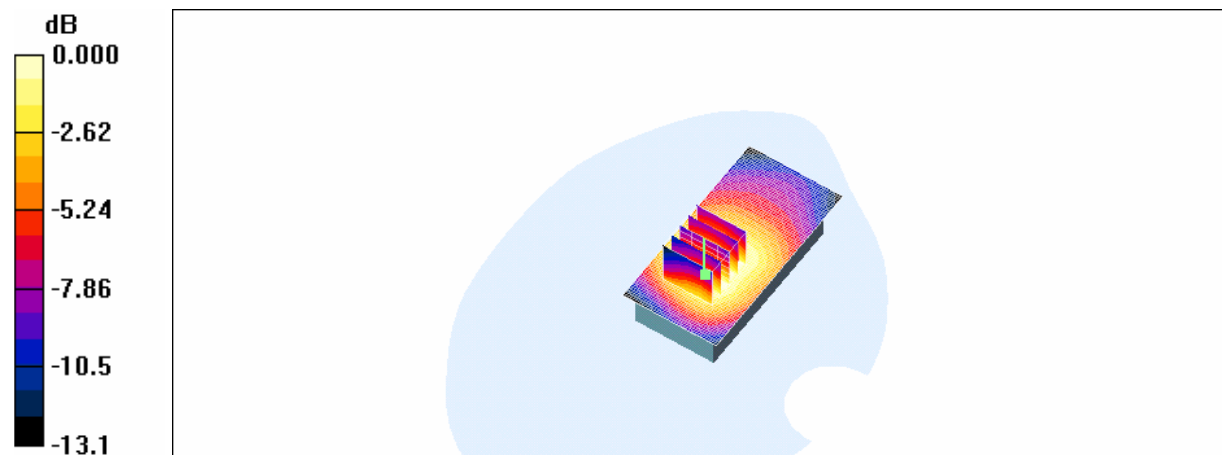
Body/Zoom Scan (5x5x7)/Cube 0: Measurement grid: dx=8mm, dy=8mm, dz=5mm

Reference Value = 14.8 V/m; Power Drift = -0.102 dB

Peak SAR (extrapolated) = 1.74 W/kg

SAR(1 g) = 1.24 mW/g; SAR(10 g) = 0.864 mW/g

Maximum value of SAR (measured) = 1.33 mW/g



0 dB = 1.33mW/g

Body_CH251_repeated with WiFi g active

DUT: Wing200; Type: GSM; Serial: TY722FY00207

Communication System: GSM 850; Frequency: 848.8 MHz; Duty Cycle: 1:4

Medium: Muscle 850 MHz Medium parameters used (interpolated): $f = 848.8$ MHz; $\sigma = 0.976$ mho/m;

$\epsilon_r = 56$; $\rho = 1000$ kg/m³

Phantom section: Flat Section

DASY4 Configuration:

- Probe: EX3DV3 - SN3526; ConvF(10.93, 10.93, 10.93); Calibrated: 2007/8/29
- Sensor-Surface: 4mm (Mechanical Surface Detection)
- Electronics: DAE4 Sn679; Calibrated: 2007/4/20
- Phantom: SAM1; Type: SAM 4.0; Serial: TP:1270
- Measurement SW: DASY4, V4.7 Build 53; Postprocessing SW: SEMCAD, V1.8 Build 172

Body/Area Scan (41x81x1): Measurement grid: dx=15mm, dy=15mm

Maximum value of SAR (interpolated) = 1.30 mW/g

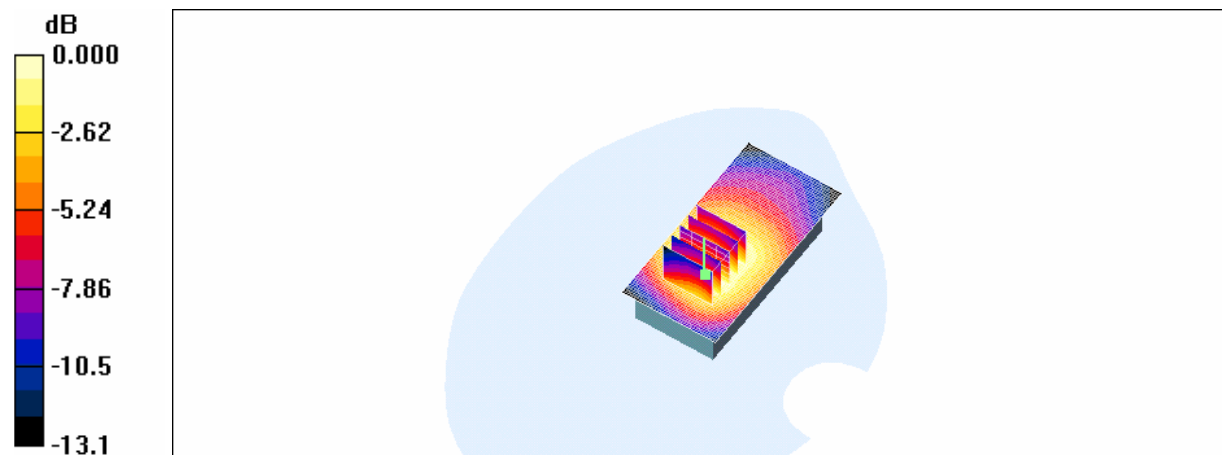
Body/Zoom Scan (5x5x7)/Cube 0: Measurement grid: dx=8mm, dy=8mm, dz=5mm

Reference Value = 14.3 V/m; Power Drift = -0.104 dB

Peak SAR (extrapolated) = 1.64 W/kg

SAR(1 g) = 1.19 mW/g; SAR(10 g) = 0.830 mW/g

Maximum value of SAR (measured) = 1.27 mW/g



0 dB = 1.27mW/g

Body_CH251with EGPRS mode

DUT: Wing200; Type: GSM; Serial: TY722FY00207

Communication System: GSM 850; Frequency: 848.8 MHz;Duty Cycle: 1:4

Medium: Muscle 850 MHz Medium parameters used (interpolated): $f = 848.8$ MHz; $\sigma = 0.976$ mho/m;

$\epsilon_r = 56$; $\rho = 1000$ kg/m³

Phantom section: Flat Section

DASY4 Configuration:

- Probe: EX3DV3 - SN3526; ConvF(10.93, 10.93, 10.93); Calibrated: 2007/8/29
- Sensor-Surface: 4mm (Mechanical Surface Detection)
- Electronics: DAE4 Sn679; Calibrated: 2007/4/20
- Phantom: SAM2; Type: SAM 4.0; Serial: TP:1270
- Measurement SW: DASY4, V4.7 Build 53; Postprocessing SW: SEMCAD, V1.8 Build 172

Body/Area Scan (41x81x1): Measurement grid: dx=15mm, dy=15mm

Maximum value of SAR (interpolated) = 0.333 mW/g

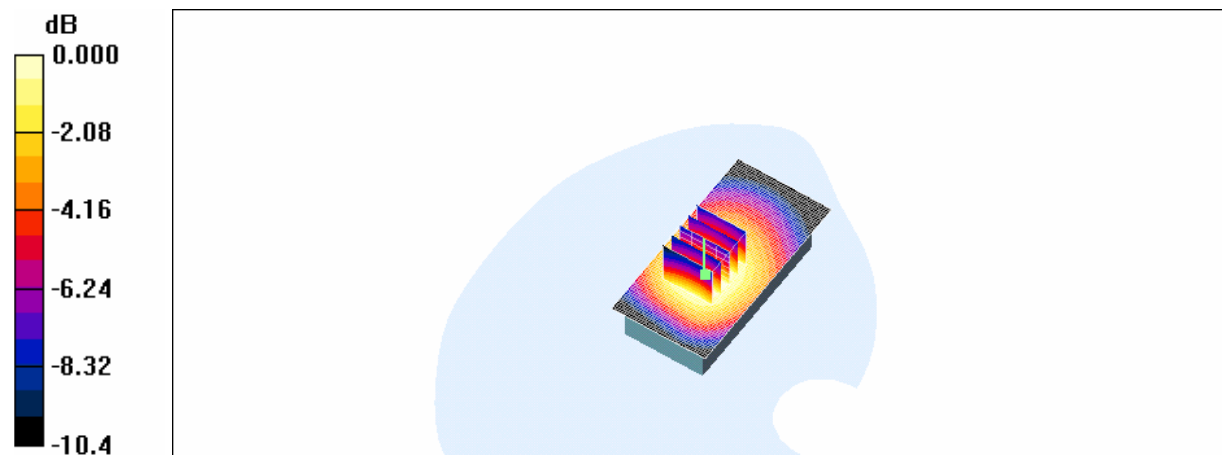
Body/Zoom Scan (5x5x7)/Cube 0: Measurement grid: dx=8mm, dy=8mm, dz=5mm

Reference Value = 6.53 V/m; Power Drift = -0.072 dB

Peak SAR (extrapolated) = 0.416 W/kg

SAR(1 g) = 0.311 mW/g; SAR(10 g) = 0.225 mW/g

Maximum value of SAR (measured) = 0.327 mW/g



Body_CH251_repeated with Holster 2

DUT: Wing200; Type: GSM; Serial: TY722FY00207

Communication System: GSM 850; Frequency: 848.8 MHz; Duty Cycle: 1:4

Medium: Muscle 850 MHz Medium parameters used (interpolated): $f = 848.8$ MHz; $\sigma = 0.976$ mho/m;

$\epsilon_r = 56$; $\rho = 1000$ kg/m³

Phantom section: Flat Section

DASY4 Configuration:

- Probe: EX3DV3 - SN3526; ConvF(10.93, 10.93, 10.93); Calibrated: 2007/8/29
- Sensor-Surface: 4mm (Mechanical Surface Detection)
- Electronics: DAE4 Sn679; Calibrated: 2007/4/20
- Phantom: SAM1; Type: SAM 4.0; Serial: TP:1270
- Measurement SW: DASY4, V4.7 Build 53; Postprocessing SW: SEMCAD, V1.8 Build 172

Body/Area Scan (41x81x1): Measurement grid: dx=15mm, dy=15mm

Maximum value of SAR (interpolated) = 1.34 mW/g

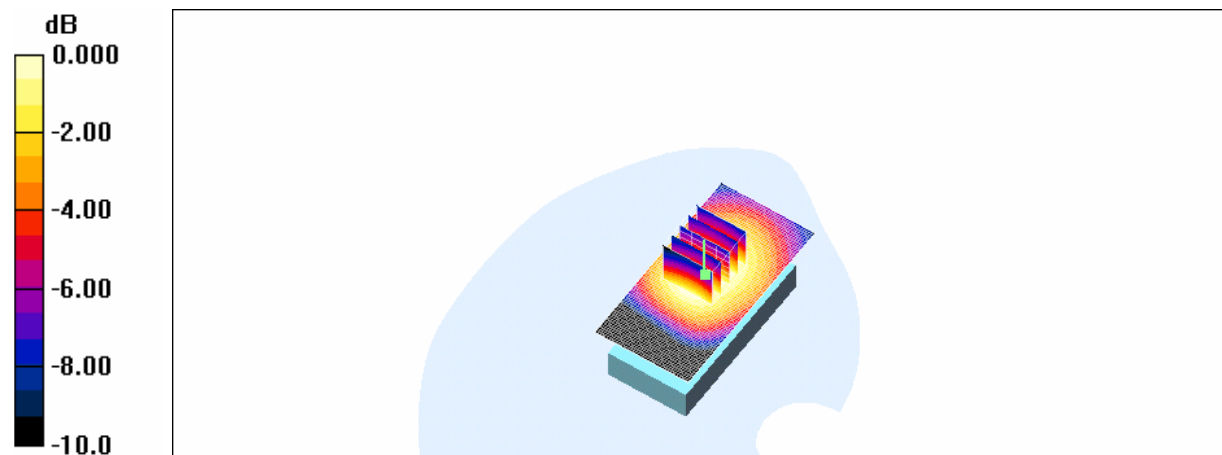
Body/Zoom Scan (5x5x7)/Cube 0: Measurement grid: dx=8mm, dy=8mm, dz=5mm

Reference Value = 6.13 V/m; Power Drift = -0.127 dB

Peak SAR (extrapolated) = 1.63 W/kg

SAR(1 g) = 1.24 mW/g; SAR(10 g) = 0.899 mW/g

Maximum value of SAR (measured) = 1.31 mW/g



0 dB = 1.31mW/g

RE Cheek_CH661_Slider off

DUT: Wing200; Type: GSM; Serial: TY722FY00207

Communication System: GSM1900; Frequency: 1880 MHz; Duty Cycle: 1:8.3

Medium: Head 1900 MHz Medium parameters used: $f = 1880$ MHz; $\sigma = 1.4$ mho/m; $\epsilon_r = 39.5$; $\rho = 1000$ kg/m³

Phantom section: Right Section

DASY4 Configuration:

- Probe: EX3DV3 - SN3526; ConvF(9.3, 9.3, 9.3); Calibrated: 2007/8/29
- Sensor-Surface: 4mm (Mechanical Surface Detection)
- Electronics: DAE4 Sn679; Calibrated: 2007/4/20
- Phantom: SAM1; Type: SAM 4.0; Serial: TP:1270
- Measurement SW: DASY4, V4.7 Build 53; Postprocessing SW: SEMCAD, V1.8 Build 172

RE_Cheek/Area Scan (41x81x1): Measurement grid: dx=15mm, dy=15mm

Maximum value of SAR (interpolated) = 0.294 mW/g

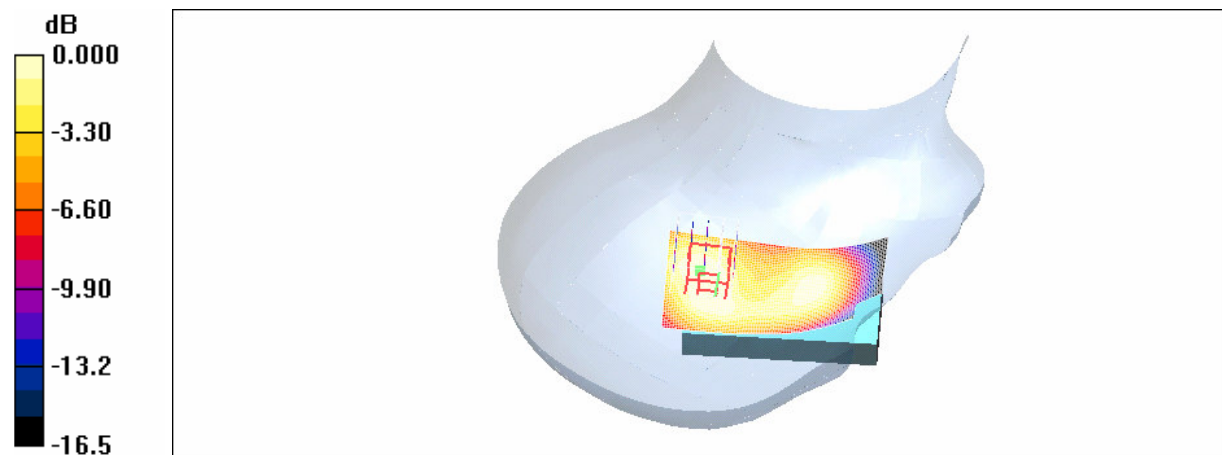
RE_Cheek/Zoom Scan (5x5x7)/Cube 0: Measurement grid: dx=8mm, dy=8mm, dz=5mm

Reference Value = 14.4 V/m; Power Drift = -0.128 dB

Peak SAR (extrapolated) = 0.442 W/kg

SAR(1 g) = 0.272 mW/g; SAR(10 g) = 0.164 mW/g

Maximum value of SAR (measured) = 0.294 mW/g



LE Cheek_CH661_Slider off

DUT: Wing200; Type: GSM; Serial: TY722FY00207

Communication System: GSM1900; Frequency: 1880 MHz; Duty Cycle: 1:8.3

Medium: Head 1900 MHz Medium parameters used: $f = 1880$ MHz; $\sigma = 1.4$ mho/m; $\epsilon_r = 39.5$; $\rho = 1000$ kg/m³

Phantom section: Left Section

DASY4 Configuration:

- Probe: EX3DV3 - SN3526; ConvF(9.3, 9.3, 9.3); Calibrated: 2007/8/29
- Sensor-Surface: 4mm (Mechanical Surface Detection)
- Electronics: DAE4 Sn679; Calibrated: 2007/4/20
- Phantom: SAM1; Type: SAM 4.0; Serial: TP:1270
- Measurement SW: DASY4, V4.7 Build 53; Postprocessing SW: SEMCAD, V1.8 Build 172

LE_Cheek/Area Scan (51x81x1): Measurement grid: dx=15mm, dy=15mm

Maximum value of SAR (interpolated) = 0.341 mW/g

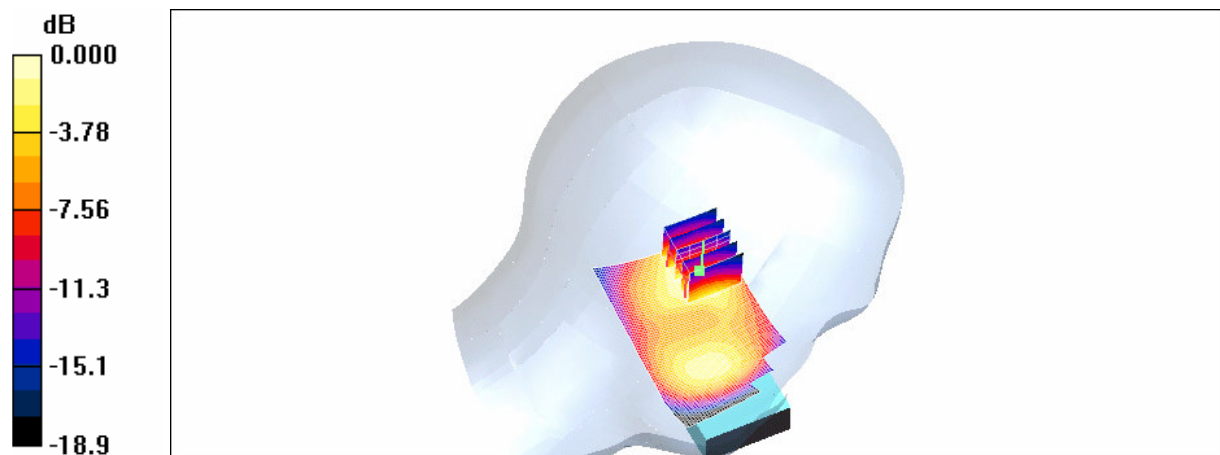
LE_Cheek/Zoom Scan (5x5x7)/Cube 0: Measurement grid: dx=8mm, dy=8mm, dz=5mm

Reference Value = 12.0 V/m; Power Drift = -0.137 dB

Peak SAR (extrapolated) = 0.553 W/kg

SAR(1 g) = 0.318 mW/g; SAR(10 g) = 0.174 mW/g

Maximum value of SAR (measured) = 0.346 mW/g



RE Tilt_CH661_Slider off

DUT: Wing200; Type: GSM; Serial: TY722FY00207

Communication System: GSM1900; Frequency: 1880 MHz; Duty Cycle: 1:8.3

Medium: Head 1900 MHz Medium parameters used: $f = 1880$ MHz; $\sigma = 1.4$ mho/m; $\epsilon_r = 39.5$; $\rho = 1000$ kg/m³

Phantom section: Right Section

DASY4 Configuration:

- Probe: EX3DV3 - SN3526; ConvF(9.3, 9.3, 9.3); Calibrated: 2007/8/29
- Sensor-Surface: 4mm (Mechanical Surface Detection)
- Electronics: DAE4 Sn679; Calibrated: 2007/4/20
- Phantom: SAM1; Type: SAM 4.0; Serial: TP:1270
- Measurement SW: DASY4, V4.7 Build 53; Postprocessing SW: SEMCAD, V1.8 Build 172

RE_Tilt/Area Scan (41x81x1): Measurement grid: dx=15mm, dy=15mm

Maximum value of SAR (interpolated) = 0.459 mW/g

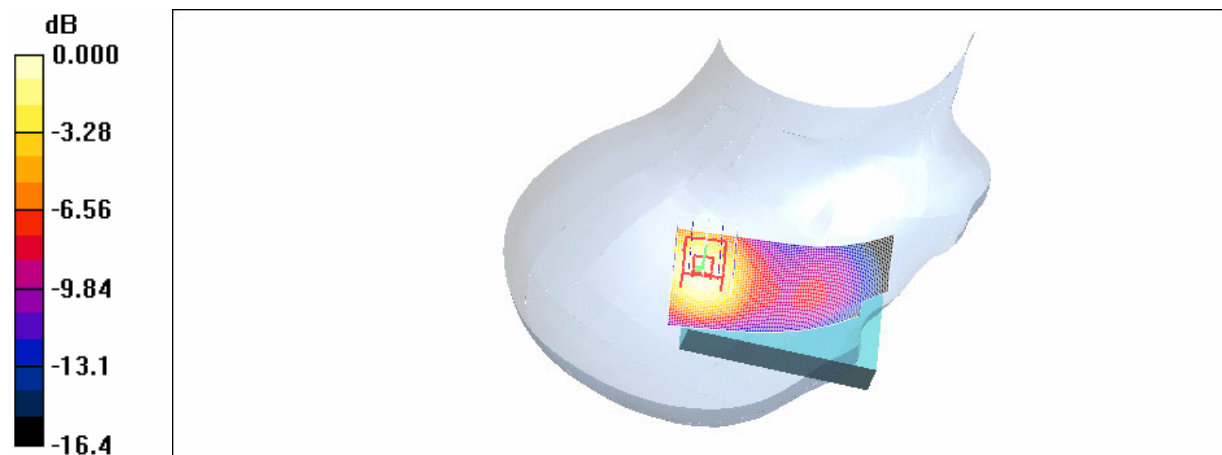
RE_Tilt/Zoom Scan (5x5x7)/Cube 0: Measurement grid: dx=8mm, dy=8mm, dz=5mm

Reference Value = 17.2 V/m; Power Drift = -0.039 dB

Peak SAR (extrapolated) = 0.668 W/kg

SAR(1 g) = 0.403 mW/g; SAR(10 g) = 0.233 mW/g

Maximum value of SAR (measured) = 0.443 mW/g



LE Tilt_CH661_Slider off

DUT: Wing200; Type: GSM; Serial: TY722FY00207

Communication System: GSM1900; Frequency: 1880 MHz; Duty Cycle: 1:8.3

Medium: Head 1900 MHz Medium parameters used: $f = 1880$ MHz; $\sigma = 1.4$ mho/m; $\epsilon_r = 39.5$; $\rho = 1000$ kg/m³

Phantom section: Left Section

DASY4 Configuration:

- Probe: EX3DV3 - SN3526; ConvF(9.3, 9.3, 9.3); Calibrated: 2007/8/29
- Sensor-Surface: 4mm (Mechanical Surface Detection)
- Electronics: DAE4 Sn679; Calibrated: 2007/4/20
- Phantom: SAM1; Type: SAM 4.0; Serial: TP:1270
- Measurement SW: DASY4, V4.7 Build 53; Postprocessing SW: SEMCAD, V1.8 Build 172

LE Tilt/Area Scan (51x81x1): Measurement grid: dx=15mm, dy=15mm

Maximum value of SAR (interpolated) = 0.405 mW/g

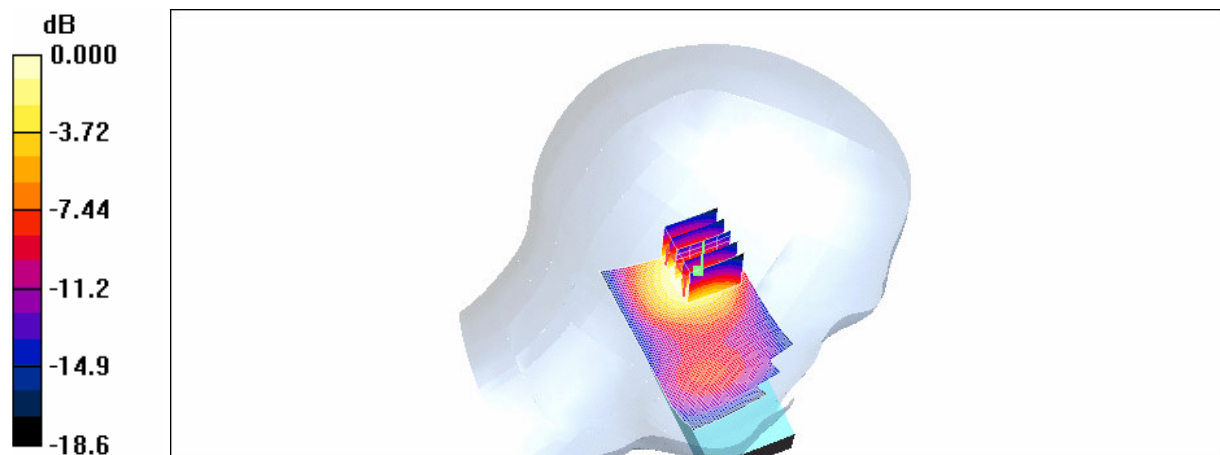
LE Tilt/Zoom Scan (5x5x7)/Cube 0: Measurement grid: dx=8mm, dy=8mm, dz=5mm

Reference Value = 15.1 V/m; Power Drift = -0.034 dB

Peak SAR (extrapolated) = 0.645 W/kg

SAR(1 g) = 0.381 mW/g; SAR(10 g) = 0.214 mW/g

Maximum value of SAR (measured) = 0.410 mW/g



RE Cheek_CH661_Slider on

DUT: Wing200; Type: GSM; Serial: TY722FY00207

Communication System: GSM1900; Frequency: 1880 MHz; Duty Cycle: 1:8.3

Medium: Head 1900 MHz Medium parameters used: $f = 1880$ MHz; $\sigma = 1.4$ mho/m; $\epsilon_r = 39.5$; $\rho = 1000$ kg/m³

Phantom section: Right Section

DASY4 Configuration:

- Probe: EX3DV3 - SN3526; ConvF(9.3, 9.3, 9.3); Calibrated: 2007/8/29
- Sensor-Surface: 4mm (Mechanical Surface Detection)
- Electronics: DAE4 Sn679; Calibrated: 2007/4/20
- Phantom: SAM1; Type: SAM 4.0; Serial: TP:1270
- Measurement SW: DASY4, V4.7 Build 53; Postprocessing SW: SEMCAD, V1.8 Build 172

RE_Cheek/Area Scan (61x81x1): Measurement grid: dx=15mm, dy=15mm

Maximum value of SAR (interpolated) = 0.322 mW/g

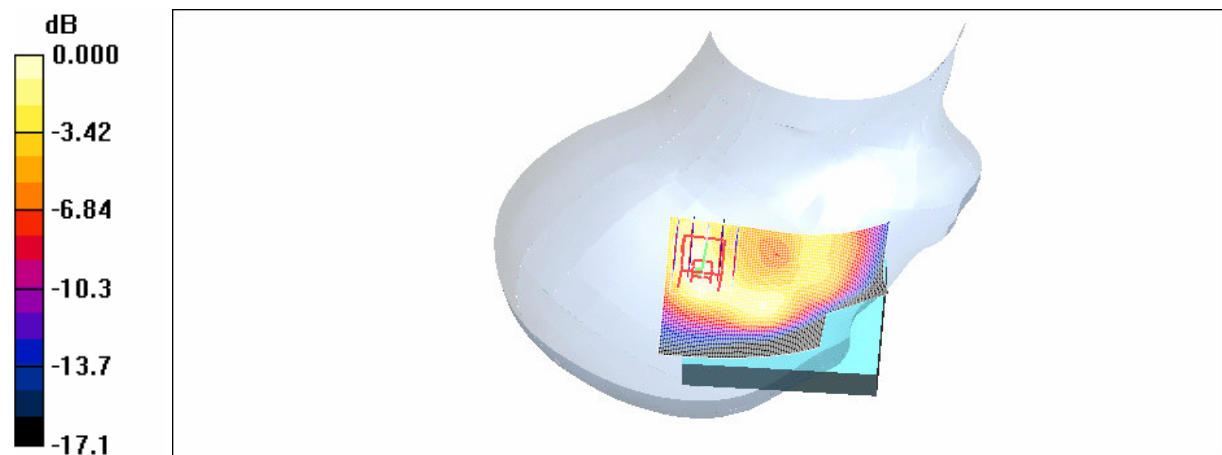
RE_Cheek/Zoom Scan (5x5x7)/Cube 0: Measurement grid: dx=8mm, dy=8mm, dz=5mm

Reference Value = 14.8 V/m; Power Drift = 0.023 dB

Peak SAR (extrapolated) = 0.490 W/kg

SAR(1 g) = 0.292 mW/g; SAR(10 g) = 0.167 mW/g

Maximum value of SAR (measured) = 0.315 mW/g



LE Cheek_CH661_Slider on

DUT: Wing200; Type: GSM; Serial: TY722FY00207

Communication System: GSM1900; Frequency: 1880 MHz; Duty Cycle: 1:8.3

Medium: Head 1900 MHz Medium parameters used: $f = 1880$ MHz; $\sigma = 1.4$ mho/m; $\epsilon_r = 39.5$; $\rho = 1000$ kg/m³

Phantom section: Left Section

DASY4 Configuration:

- Probe: EX3DV3 - SN3526; ConvF(9.3, 9.3, 9.3); Calibrated: 2007/8/29
- Sensor-Surface: 4mm (Mechanical Surface Detection)
- Electronics: DAE4 Sn679; Calibrated: 2007/4/20
- Phantom: SAM1; Type: SAM 4.0; Serial: TP:1270
- Measurement SW: DASY4, V4.7 Build 53; Postprocessing SW: SEMCAD, V1.8 Build 172

LE_Cheek/Area Scan (61x81x1): Measurement grid: dx=15mm, dy=15mm

Maximum value of SAR (interpolated) = 0.585 mW/g

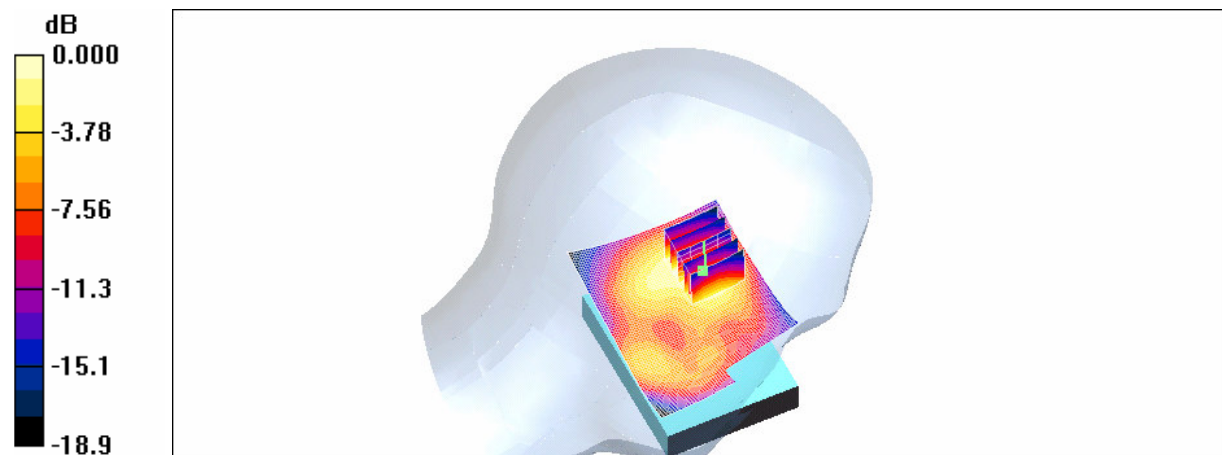
LE_Cheek/Zoom Scan (5x5x7)/Cube 0: Measurement grid: dx=8mm, dy=8mm, dz=5mm

Reference Value = 14.0 V/m; Power Drift = -0.102 dB

Peak SAR (extrapolated) = 0.930 W/kg

SAR(1 g) = 0.527 mW/g; SAR(10 g) = 0.294 mW/g

Maximum value of SAR (measured) = 0.576 mW/g



RE Tilt_CH661_Slider on

DUT: Wing200; Type: GSM; Serial: TY722FY00207

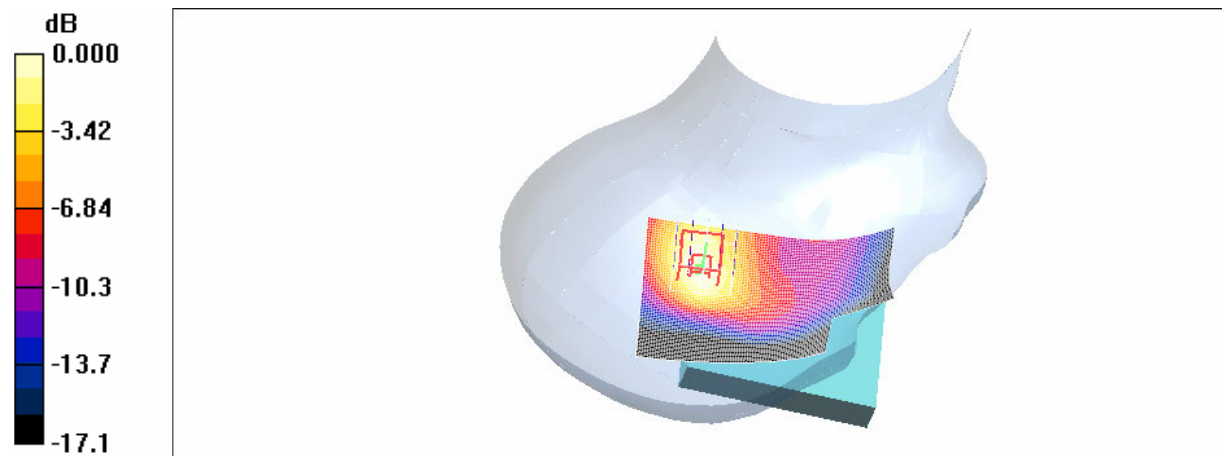
Communication System: GSM1900; Frequency: 1880 MHz; Duty Cycle: 1:8.3
Medium: Head 1900 MHz Medium parameters used: $f = 1880$ MHz; $\sigma = 1.4$ mho/m; $\epsilon_r = 39.5$; $\rho = 1000$ kg/m³
Phantom section: Right Section

DASY4 Configuration:

- Probe: EX3DV3 - SN3526; ConvF(9.3, 9.3, 9.3); Calibrated: 2007/8/29
- Sensor-Surface: 4mm (Mechanical Surface Detection)
- Electronics: DAE4 Sn679; Calibrated: 2007/4/20
- Phantom: SAM1; Type: SAM 4.0; Serial: TP:1270
- Measurement SW: DASY4, V4.7 Build 53; Postprocessing SW: SEMCAD, V1.8 Build 172

LE_Cheek/Area Scan (61x91x1): Measurement grid: dx=15mm, dy=15mm
Maximum value of SAR (interpolated) = 0.424 mW/g

LE_Cheek/Zoom Scan (5x5x7)/Cube 0: Measurement grid: dx=8mm, dy=8mm, dz=5mm
Reference Value = 16.5 V/m; Power Drift = -0.080 dB
Peak SAR (extrapolated) = 0.635 W/kg
SAR(1 g) = 0.377 mW/g; SAR(10 g) = 0.215 mW/g
Maximum value of SAR (measured) = 0.416 mW/g



LE Tilt_CH661_Slider on

DUT: Wing200; Type: GSM; Serial: TY722FY00207

Communication System: GSM1900; Frequency: 1880 MHz; Duty Cycle: 1:8.3

Medium: Head 1900 MHz Medium parameters used: $f = 1880$ MHz; $\sigma = 1.4$ mho/m; $\epsilon_r = 39.5$; $\rho = 1000$ kg/m³

Phantom section: Left Section

DASY4 Configuration:

- Probe: EX3DV3 - SN3526; ConvF(9.3, 9.3, 9.3); Calibrated: 2007/8/29
- Sensor-Surface: 4mm (Mechanical Surface Detection)
- Electronics: DAE4 Sn679; Calibrated: 2007/4/20
- Phantom: SAM1; Type: SAM 4.0; Serial: TP:1270
- Measurement SW: DASY4, V4.7 Build 53; Postprocessing SW: SEMCAD, V1.8 Build 172

LE_Cheek/Area Scan (61x81x1): Measurement grid: dx=15mm, dy=15mm

Maximum value of SAR (interpolated) = 0.529 mW/g

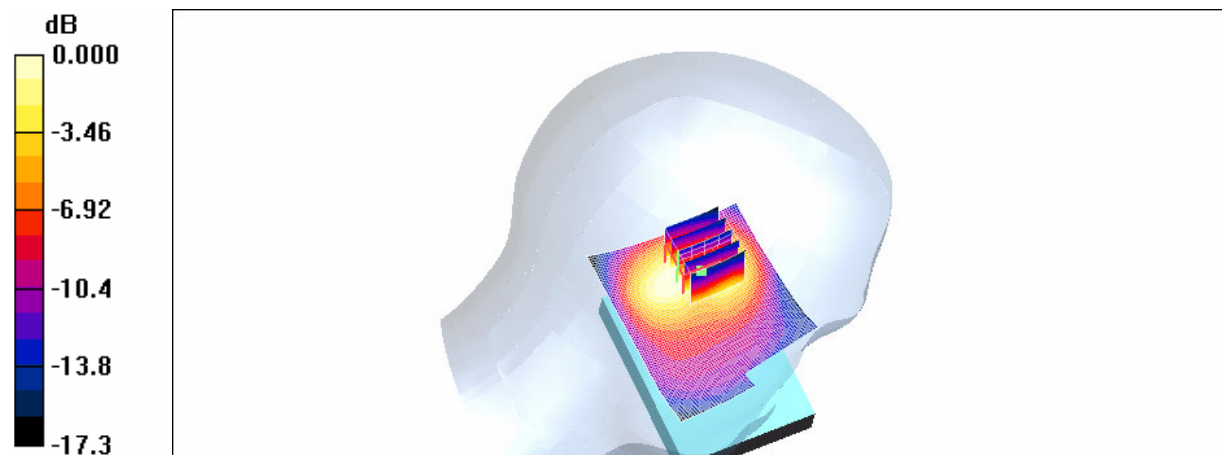
LE_Cheek/Zoom Scan (5x5x7)/Cube 0: Measurement grid: dx=8mm, dy=8mm, dz=5mm

Reference Value = 17.7 V/m; Power Drift = -0.005 dB

Peak SAR (extrapolated) = 0.820 W/kg

SAR(1 g) = 0.474 mW/g; SAR(10 g) = 0.273 mW/g

Maximum value of SAR (measured) = 0.515 mW/g



Body_CH512

DUT: Wing200; Type: GSM; Serial: TY722FY00207

Communication System: GSM1900; Frequency: 1850.2 MHz; Duty Cycle: 1:4

Medium: M1800 & 1900 Medium parameters used (interpolated): $f = 1850.2$ MHz; $\sigma = 1.53$ mho/m; $\epsilon_r = 52.7$; $\rho = 1000$ kg/m³

Phantom section: Flat Section

DASY4 Configuration:

- Probe: EX3DV3 - SN3526; ConvF(9.04, 9.04, 9.04); Calibrated: 2007/8/29
- Sensor-Surface: 4mm (Mechanical Surface Detection)
- Electronics: DAE4 Sn679; Calibrated: 2007/4/20
- Phantom: SAM1; Type: SAM 4.0; Serial: TP:1270
- Measurement SW: DASY4, V4.7 Build 53; Postprocessing SW: SEMCAD, V1.8 Build 172

Body/Area Scan (41x81x1): Measurement grid: dx=15mm, dy=15mm

Maximum value of SAR (interpolated) = 0.831 mW/g

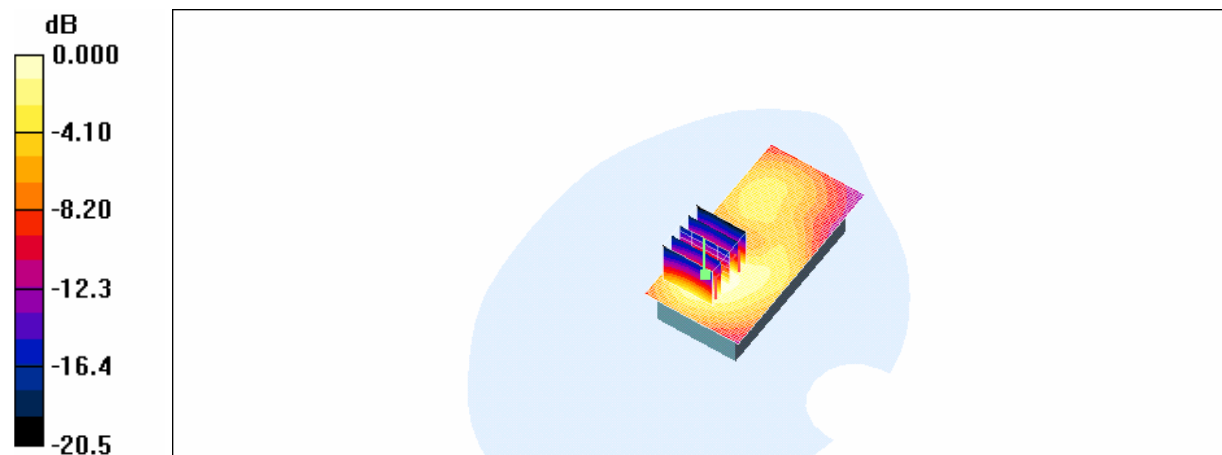
Body/Zoom Scan (5x5x7)/Cube 0: Measurement grid: dx=8mm, dy=8mm, dz=5mm

Reference Value = 12.8 V/m; Power Drift = -0.133 dB

Peak SAR (extrapolated) = 1.45 W/kg

SAR(1 g) = 0.713 mW/g; SAR(10 g) = 0.388 mW/g

Maximum value of SAR (measured) = 0.814 mW/g



Body_CH661

DUT: Wing200; Type: GSM; Serial: TY722FY00207

Communication System: GSM1900; Frequency: 1880 MHz; Duty Cycle: 1:4

Medium: M1800 & 1900 Medium parameters used (interpolated): $f = 1880$ MHz; $\sigma = 1.56$ mho/m; $\epsilon_r = 52.4$; $\rho = 1000$ kg/m³

Phantom section: Flat Section

DASY4 Configuration:

- Probe: EX3DV3 - SN3526; ConvF(9.04, 9.04, 9.04); Calibrated: 2007/8/29
- Sensor-Surface: 4mm (Mechanical Surface Detection)
- Electronics: DAE4 Sn679; Calibrated: 2007/4/20
- Phantom: SAM1; Type: SAM 4.0; Serial: TP:1270
- Measurement SW: DASY4, V4.7 Build 53; Postprocessing SW: SEMCAD, V1.8 Build 172

Body/Area Scan (41x81x1): Measurement grid: dx=15mm, dy=15mm

Maximum value of SAR (interpolated) = 0.798 mW/g

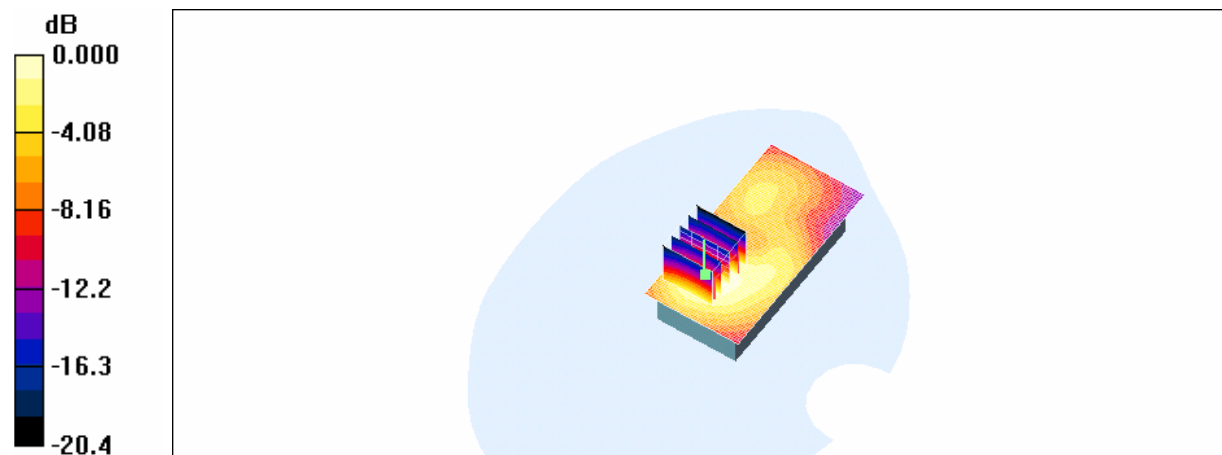
Body/Zoom Scan (5x5x7)/Cube 0: Measurement grid: dx=8mm, dy=8mm, dz=5mm

Reference Value = 13.0 V/m; Power Drift = 0.032 dB

Peak SAR (extrapolated) = 1.42 W/kg

SAR(1 g) = 0.695 mW/g; SAR(10 g) = 0.381 mW/g

Maximum value of SAR (measured) = 0.785 mW/g



Body_CH810

DUT: Wing200; Type: GSM; Serial: TY722FY00207

Communication System: GSM1900; Frequency: 1909.8 MHz; Duty Cycle: 1:4

Medium: M1800 & 1900 Medium parameters used: $f = 1910$ MHz; $\sigma = 1.59$ mho/m; $\epsilon_r = 52.3$; $\rho = 1000$ kg/m³

Phantom section: Flat Section

DASY4 Configuration:

- Probe: EX3DV3 - SN3526; ConvF(9.04, 9.04, 9.04); Calibrated: 2007/8/29
- Sensor-Surface: 4mm (Mechanical Surface Detection)
- Electronics: DAE4 Sn679; Calibrated: 2007/4/20
- Phantom: SAM1; Type: SAM 4.0; Serial: TP:1270
- Measurement SW: DASY4, V4.7 Build 53; Postprocessing SW: SEMCAD, V1.8 Build 172

Body/Area Scan (41x81x1): Measurement grid: dx=15mm, dy=15mm

Maximum value of SAR (interpolated) = 0.725 mW/g

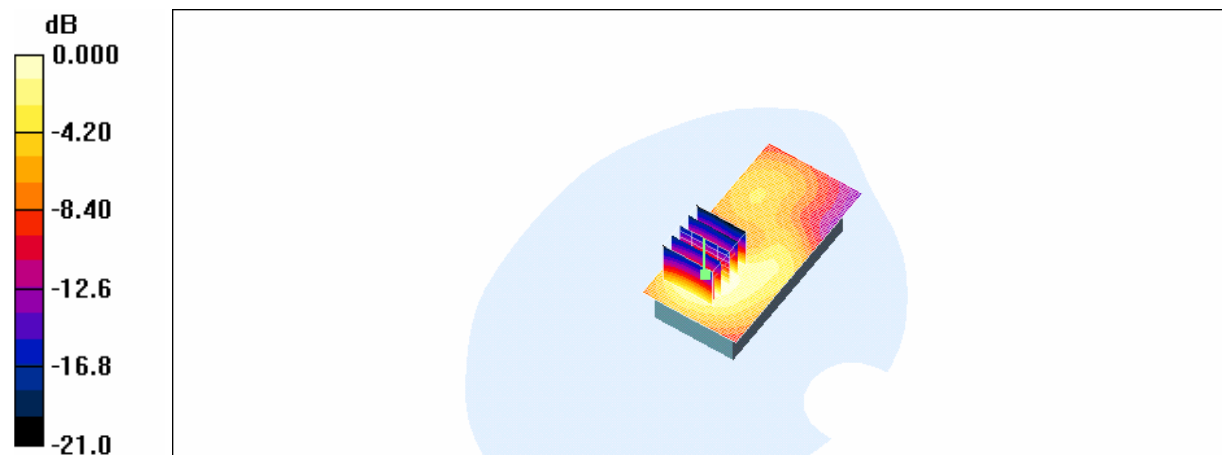
Body/Zoom Scan (5x5x7)/Cube 0: Measurement grid: dx=8mm, dy=8mm, dz=5mm

Reference Value = 12.8 V/m; Power Drift = 0.055 dB

Peak SAR (extrapolated) = 1.29 W/kg

SAR(1 g) = 0.638 mW/g; SAR(10 g) = 0.352 mW/g

Maximum value of SAR (measured) = 0.719 mW/g



Body_CH512_rpeated with Holster 2

DUT: Wing200; Type: GSM; Serial: TY722FY00207

Communication System: GSM1900; Frequency: 1850.2 MHz; Duty Cycle: 1:4

Medium: M1800 & 1900 Medium parameters used (interpolated): $f = 1850.2$ MHz; $\sigma = 1.53$ mho/m; $\epsilon_r = 52.7$; $\rho = 1000$ kg/m³

Phantom section: Flat Section

DASY4 Configuration:

- Probe: EX3DV3 - SN3526; ConvF(9.04, 9.04, 9.04); Calibrated: 2007/8/29
- Sensor-Surface: 4mm (Mechanical Surface Detection)
- Electronics: DAE4 Sn679; Calibrated: 2007/4/20
- Phantom: SAM1; Type: SAM 4.0; Serial: TP:1270
- Measurement SW: DASY4, V4.7 Build 53; Postprocessing SW: SEMCAD, V1.8 Build 172

Body/Area Scan (41x81x1): Measurement grid: dx=15mm, dy=15mm

Maximum value of SAR (interpolated) = 0.587 mW/g

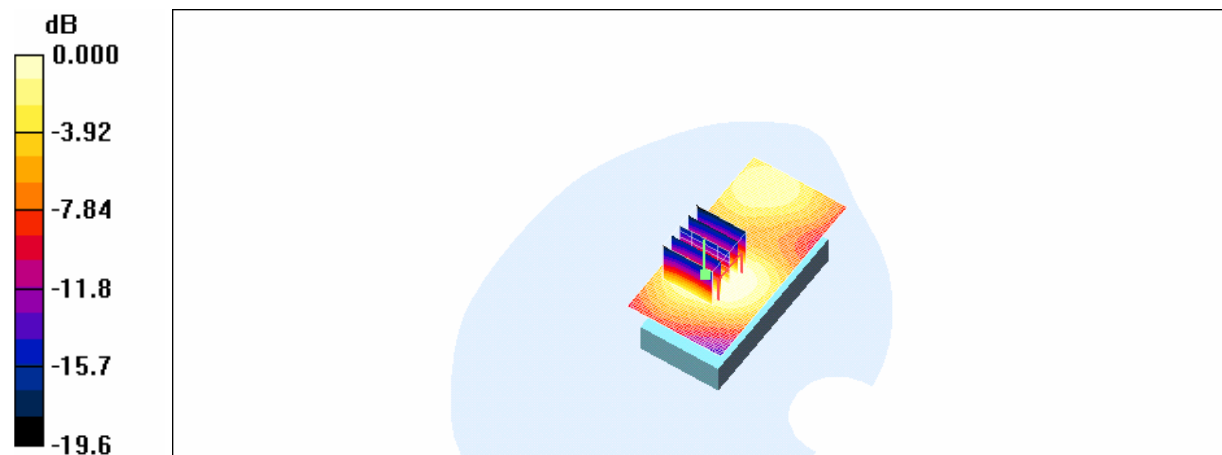
Body/Zoom Scan (5x5x7)/Cube 0: Measurement grid: dx=8mm, dy=8mm, dz=5mm

Reference Value = 7.46 V/m; Power Drift = 0.028 dB

Peak SAR (extrapolated) = 1.02 W/kg

SAR(1 g) = 0.518 mW/g; SAR(10 g) = 0.294 mW/g

Maximum value of SAR (measured) = 0.577 mW/g



RE Cheek_CH9400_Slider off

DUT: Wing200; Type: WCDMA; Serial: TY722FY00207

Communication System: WCDMA BAND2; Frequency: 1880 MHz; Duty Cycle: 1:1

Medium: WCDMA B2 Medium parameters used: $f = 1880$ MHz; $\sigma = 1.4$ mho/m; $\epsilon_r = 39.5$; $\rho = 1000$ kg/m³

Phantom section: Right Section

DASY4 Configuration:

- Probe: EX3DV3 - SN3526; ConvF(9.3, 9.3, 9.3); Calibrated: 2007/8/29
- Sensor-Surface: 4mm (Mechanical Surface Detection)
- Electronics: DAE4 Sn679; Calibrated: 2007/4/20
- Phantom: SAM1; Type: SAM 4.0; Serial: TP:1270
- Measurement SW: DASY4, V4.7 Build 53; Postprocessing SW: SEMCAD, V1.8 Build 172

RE_Cheek/Area Scan (51x91x1): Measurement grid: dx=15mm, dy=15mm

Maximum value of SAR (interpolated) = 0.560 mW/g

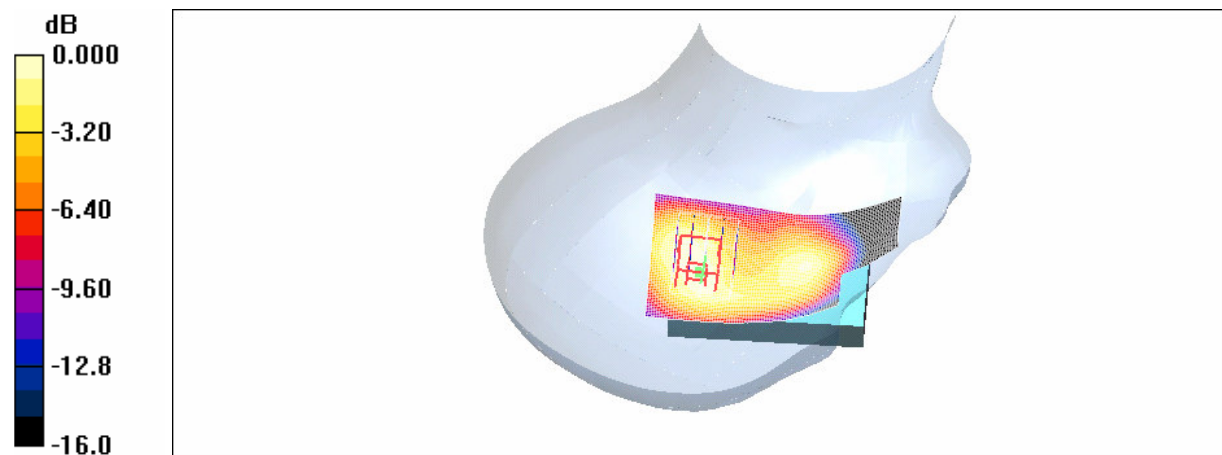
RE_Cheek/Zoom Scan (5x5x7)/Cube 0: Measurement grid: dx=8mm, dy=8mm, dz=5mm

Reference Value = 19.0 V/m; Power Drift = 0.098 dB

Peak SAR (extrapolated) = 0.890 W/kg

SAR(1 g) = 0.547 mW/g; SAR(10 g) = 0.324 mW/g

Maximum value of SAR (measured) = 0.592 mW/g



LE Cheek_CH9400_Slider off

DUT: Wing200; Type: WCDMA; Serial: TY722FY00207

Communication System: WCDMA BAND2; Frequency: 1880 MHz; Duty Cycle: 1:1

Medium: WCDMA B2 Medium parameters used: $f = 1880$ MHz; $\sigma = 1.4$ mho/m; $\epsilon_r = 39.5$; $\rho = 1000$ kg/m³

Phantom section: Left Section

DASY4 Configuration:

- Probe: EX3DV3 - SN3526; ConvF(9.3, 9.3, 9.3); Calibrated: 2007/8/29
- Sensor-Surface: 4mm (Mechanical Surface Detection)
- Electronics: DAE4 Sn679; Calibrated: 2007/4/20
- Phantom: SAM1; Type: SAM 4.0; Serial: TP:1270
- Measurement SW: DASY4, V4.7 Build 53; Postprocessing SW: SEMCAD, V1.8 Build 172

LE_Cheek/Area Scan (51x91x1): Measurement grid: dx=15mm, dy=15mm

Maximum value of SAR (interpolated) = 0.621 mW/g

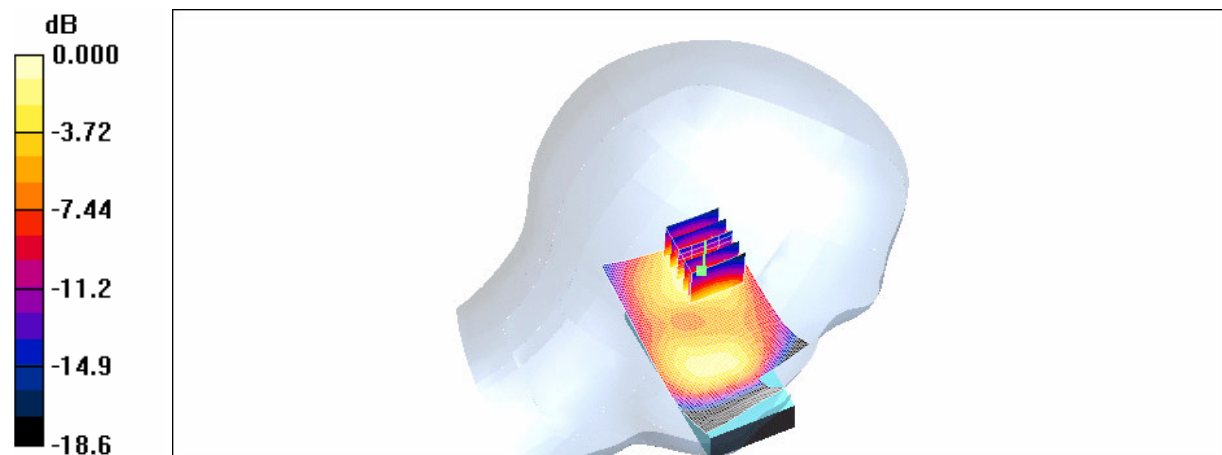
LE_Cheek/Zoom Scan (5x5x7)/Cube 0: Measurement grid: dx=8mm, dy=8mm, dz=5mm

Reference Value = 16.8 V/m; Power Drift = -0.018 dB

Peak SAR (extrapolated) = 1.06 W/kg

SAR(1 g) = 0.607 mW/g; SAR(10 g) = 0.331 mW/g

Maximum value of SAR (measured) = 0.671 mW/g



RE Tilt_CH9400_Slider off

DUT: Wing200; Type: WCDMA; Serial: TY722FY00207

Communication System: WCDMA BAND2; Frequency: 1880 MHz; Duty Cycle: 1:1

Medium: WCDMA B2 Medium parameters used: $f = 1880$ MHz; $\sigma = 1.4$ mho/m; $\epsilon_r = 39.5$; $\rho = 1000$ kg/m³

Phantom section: Right Section

DASY4 Configuration:

- Probe: EX3DV3 - SN3526; ConvF(9.3, 9.3, 9.3); Calibrated: 2007/8/29
- Sensor-Surface: 4mm (Mechanical Surface Detection)
- Electronics: DAE4 Sn679; Calibrated: 2007/4/20
- Phantom: SAM1; Type: SAM 4.0; Serial: TP:1270
- Measurement SW: DASY4, V4.7 Build 53; Postprocessing SW: SEMCAD, V1.8 Build 172

RE_Tilt/Area Scan (51x91x1): Measurement grid: dx=15mm, dy=15mm

Maximum value of SAR (interpolated) = 0.834 mW/g

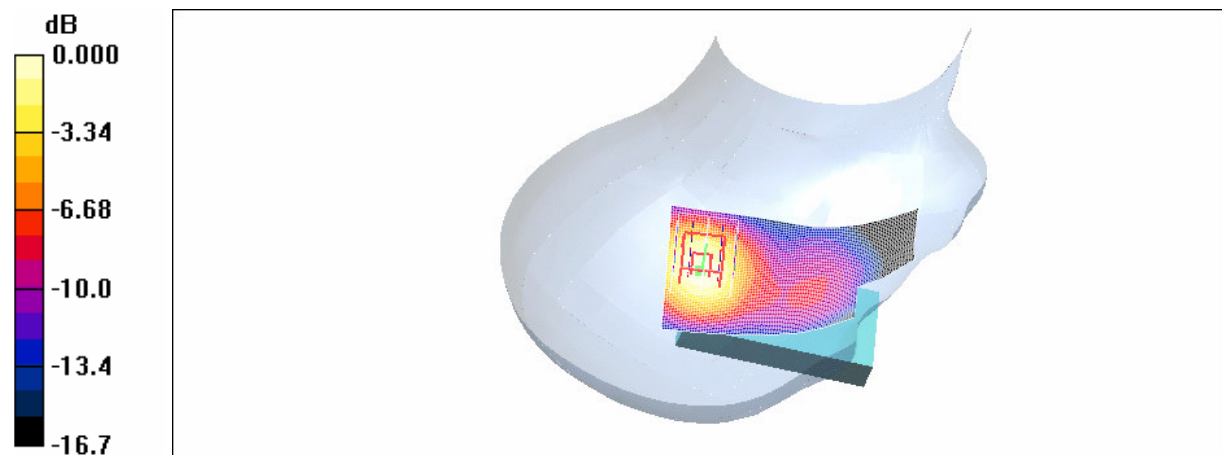
RE_Tilt/Zoom Scan (5x5x7)/Cube 0: Measurement grid: dx=8mm, dy=8mm, dz=5mm

Reference Value = 23.2 V/m; Power Drift = 0.187 dB

Peak SAR (extrapolated) = 1.28 W/kg

SAR(1 g) = 0.769 mW/g; SAR(10 g) = 0.443 mW/g

Maximum value of SAR (measured) = 0.845 mW/g



0 dB = 0.845mW/g

LE Tilt_CH9400_Slider off

DUT: Wing200; Type: WCDMA; Serial: TY722FY00207

Communication System: WCDMA BAND2; Frequency: 1880 MHz; Duty Cycle: 1:1

Medium: WCDMA B2 Medium parameters used: $f = 1880$ MHz; $\sigma = 1.4$ mho/m; $\epsilon_r = 39.5$; $\rho = 1000$ kg/m³

Phantom section: Left Section

DASY4 Configuration:

- Probe: EX3DV3 - SN3526; ConvF(9.3, 9.3, 9.3); Calibrated: 2007/8/29
- Sensor-Surface: 4mm (Mechanical Surface Detection)
- Electronics: DAE4 Sn679; Calibrated: 2007/4/20
- Phantom: SAM1; Type: SAM 4.0; Serial: TP:1270
- Measurement SW: DASY4, V4.7 Build 53; Postprocessing SW: SEMCAD, V1.8 Build 172

LE_Tilt/Area Scan (51x91x1): Measurement grid: dx=15mm, dy=15mm

Maximum value of SAR (interpolated) = 0.793 mW/g

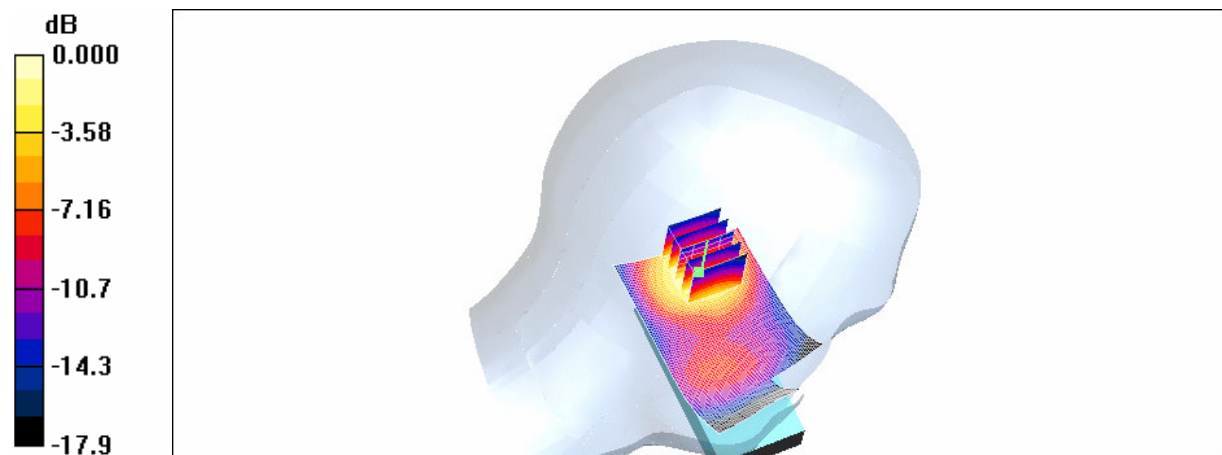
LE_Tilt/Zoom Scan (5x5x7)/Cube 0: Measurement grid: dx=8mm, dy=8mm, dz=5mm

Reference Value = 21.1 V/m; Power Drift = 0.006 dB

Peak SAR (extrapolated) = 1.23 W/kg

SAR(1 g) = 0.727 mW/g; SAR(10 g) = 0.407 mW/g

Maximum value of SAR (measured) = 0.787 mW/g



RE Cheek_CH9400_Slider on

DUT: Wing200; Type: WCDMA; Serial: TY722FY00207

Communication System: WCDMA BAND2; Frequency: 1880 MHz; Duty Cycle: 1:1

Medium: WCDMA B2 Medium parameters used: $f = 1880$ MHz; $\sigma = 1.4$ mho/m; $\epsilon_r = 39.5$; $\rho = 1000$ kg/m³

Phantom section: Right Section

DASY4 Configuration:

- Probe: EX3DV3 - SN3526; ConvF(9.3, 9.3, 9.3); Calibrated: 2007/8/29
- Sensor-Surface: 4mm (Mechanical Surface Detection)
- Electronics: DAE4 Sn679; Calibrated: 2007/4/20
- Phantom: SAM1; Type: SAM 4.0; Serial: TP:1270
- Measurement SW: DASY4, V4.7 Build 53; Postprocessing SW: SEMCAD, V1.8 Build 172

RE_Cheek/Area Scan (61x81x1): Measurement grid: dx=15mm, dy=15mm

Maximum value of SAR (interpolated) = 0.569 mW/g

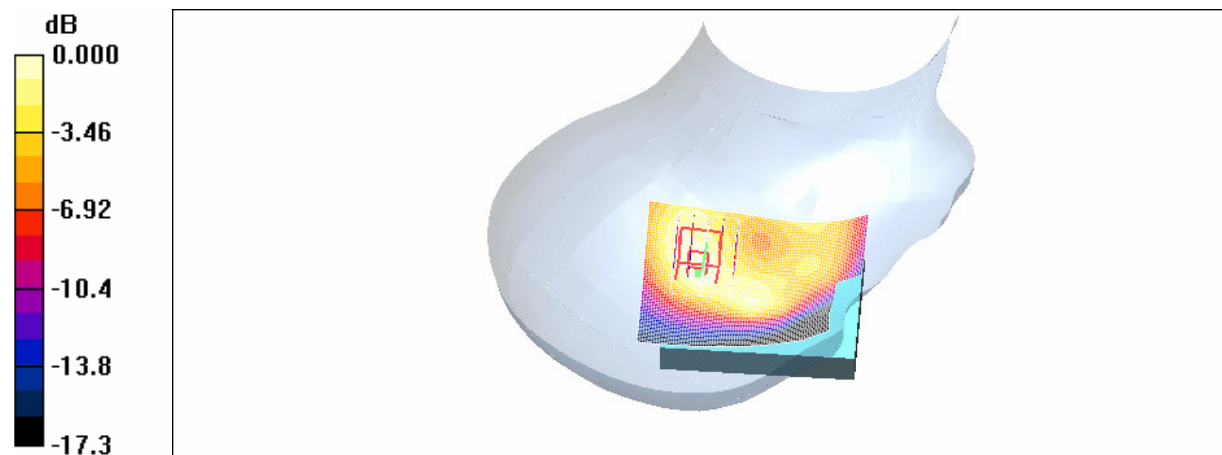
RE_Cheek/Zoom Scan (5x5x7)/Cube 0: Measurement grid: dx=8mm, dy=8mm, dz=5mm

Reference Value = 20.1 V/m; Power Drift = -0.202 dB

Peak SAR (extrapolated) = 0.868 W/kg

SAR(1 g) = 0.533 mW/g; SAR(10 g) = 0.313 mW/g

Maximum value of SAR (measured) = 0.578 mW/g



LE Cheek_CH9262_Slider on

DUT: Wing200; Type: WCDMA; Serial: TY722FY00207

Communication System: WCDMA BAND2; Frequency: 1852.4 MHz; Duty Cycle: 1:1
Medium: WCDMA B2 Medium parameters used (interpolated): $f = 1852.4$ MHz; $\sigma = 1.37$ mho/m; $\epsilon_r = 39.7$; $\rho = 1000$ kg/m³
Phantom section: Left Section

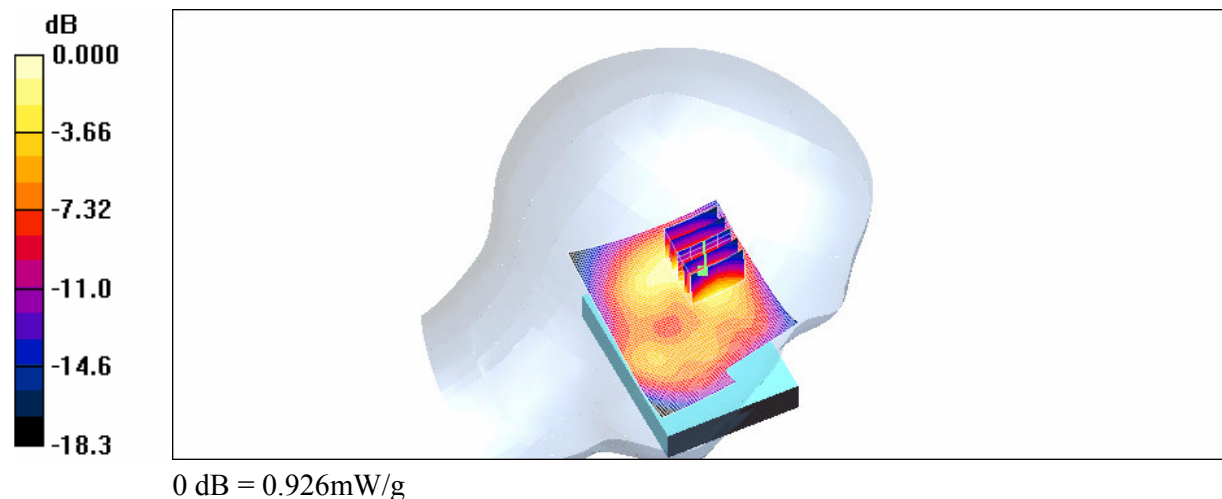
DASY4 Configuration:

- Probe: EX3DV3 - SN3526; ConvF(9.3, 9.3, 9.3); Calibrated: 2007/8/29
- Sensor-Surface: 4mm (Mechanical Surface Detection)
- Electronics: DAE4 Sn679; Calibrated: 2007/4/20
- Phantom: SAM1; Type: SAM 4.0; Serial: TP:1270
- Measurement SW: DASY4, V4.7 Build 53; Postprocessing SW: SEMCAD, V1.8 Build 172

LE_Cheek/Area Scan (61x81x1): Measurement grid: dx=15mm, dy=15mm
Maximum value of SAR (interpolated) = 0.916 mW/g

LE_Cheek/Zoom Scan (5x5x7)/Cube 0: Measurement grid: dx=8mm, dy=8mm, dz=5mm
Reference Value = 17.9 V/m; Power Drift = 0.032 dB
Peak SAR (extrapolated) = 1.48 W/kg

SAR(1 g) = 0.842 mW/g; SAR(10 g) = 0.466 mW/g
Maximum value of SAR (measured) = 0.926 mW/g



LE Cheek_CH9400_Slider on

DUT: Wing200; Type: WCDMA; Serial: TY722FY00207

Communication System: WCDMA BAND2; Frequency: 1880 MHz; Duty Cycle: 1:1

Medium: WCDMA B2 Medium parameters used: $f = 1880$ MHz; $\sigma = 1.4$ mho/m; $\epsilon_r = 39.5$; $\rho = 1000$ kg/m³

Phantom section: Left Section

DASY4 Configuration:

- Probe: EX3DV3 - SN3526; ConvF(9.3, 9.3, 9.3); Calibrated: 2007/8/29
- Sensor-Surface: 4mm (Mechanical Surface Detection)
- Electronics: DAE4 Sn679; Calibrated: 2007/4/20
- Phantom: SAM1; Type: SAM 4.0; Serial: TP:1270
- Measurement SW: DASY4, V4.7 Build 53; Postprocessing SW: SEMCAD, V1.8 Build 172

LE_Cheek/Area Scan (61x81x1): Measurement grid: dx=15mm, dy=15mm

Maximum value of SAR (interpolated) = 1.10 mW/g

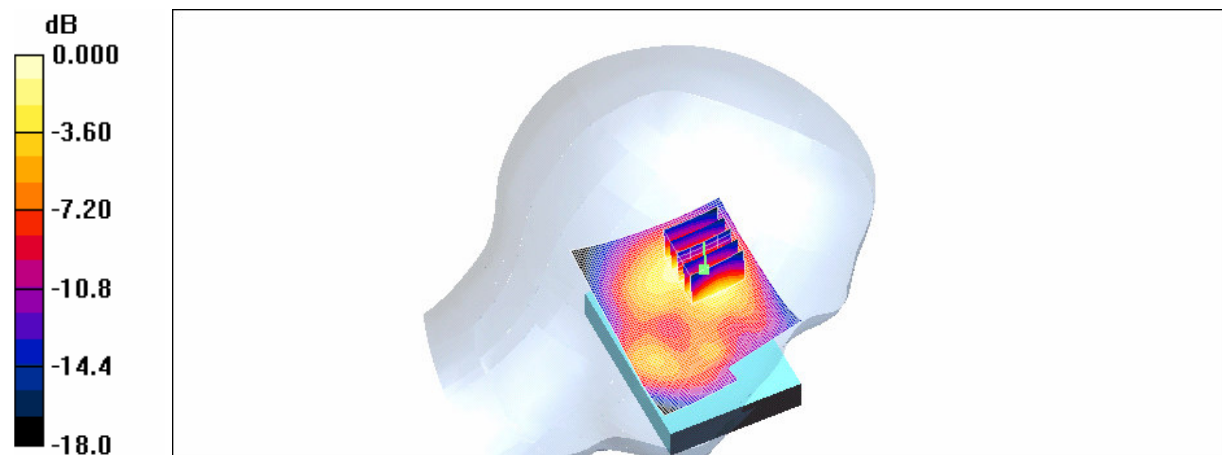
LE_Cheek/Zoom Scan (5x5x7)/Cube 0: Measurement grid: dx=8mm, dy=8mm, dz=5mm

Reference Value = 17.2 V/m; Power Drift = 0.128 dB

Peak SAR (extrapolated) = 1.77 W/kg

SAR(1 g) = 1 mW/g; SAR(10 g) = 0.552 mW/g

Maximum value of SAR (measured) = 1.11 mW/g



LE Cheek_CH9538_Slider on

DUT: Wing200; Type: WCDMA; Serial: TY722FY00207

Communication System: WCDMA BAND2; Frequency: 1907.6 MHz; Duty Cycle: 1:1

Medium: WCDMA B2 Medium parameters used: $f = 1908$ MHz; $\sigma = 1.43$ mho/m; $\epsilon_r = 39.4$; $\rho = 1000$ kg/m³

Phantom section: Left Section

DASY4 Configuration:

- Probe: EX3DV3 - SN3526; ConvF(9.3, 9.3, 9.3); Calibrated: 2007/8/29
- Sensor-Surface: 4mm (Mechanical Surface Detection)
- Electronics: DAE4 Sn679; Calibrated: 2007/4/20
- Phantom: SAM1; Type: SAM 4.0; Serial: TP:1270
- Measurement SW: DASY4, V4.7 Build 53; Postprocessing SW: SEMCAD, V1.8 Build 172

LE_Cheek/Area Scan (61x81x1): Measurement grid: dx=15mm, dy=15mm

Maximum value of SAR (interpolated) = 1.03 mW/g

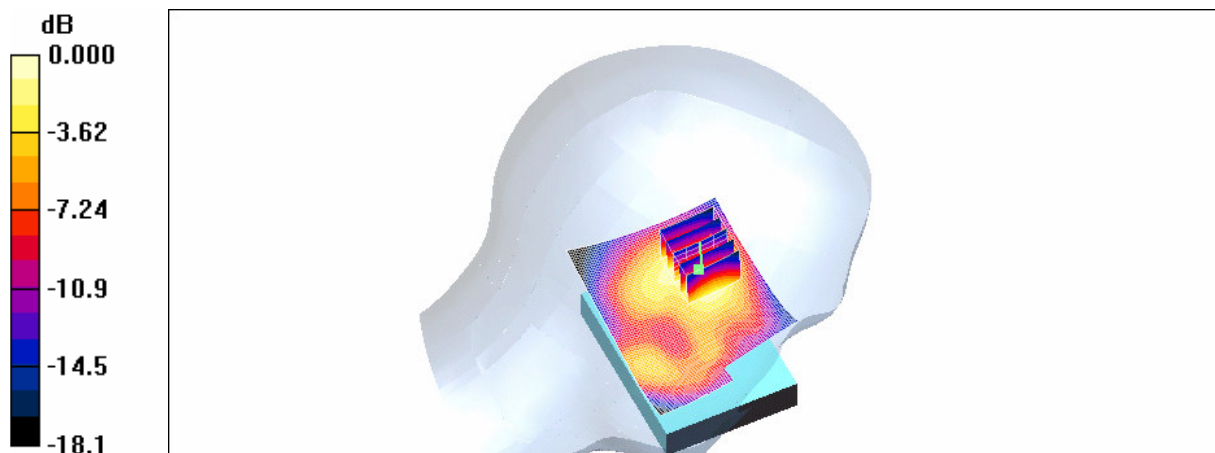
LE_Cheek/Zoom Scan (5x5x7)/Cube 0: Measurement grid: dx=8mm, dy=8mm, dz=5mm

Reference Value = 16.3 V/m; Power Drift = -0.152 dB

Peak SAR (extrapolated) = 1.59 W/kg

SAR(1 g) = 0.892 mW/g; SAR(10 g) = 0.488 mW/g

Maximum value of SAR (measured) = 0.986 mW/g



RE Tilt_CH9400_Slider on

DUT: Wing200; Type: WCDMA; Serial: TY722FY00207

Communication System: WCDMA BAND2; Frequency: 1880 MHz; Duty Cycle: 1:1

Medium: WCDMA B2 Medium parameters used: $f = 1880$ MHz; $\sigma = 1.4$ mho/m; $\epsilon_r = 39.5$; $\rho = 1000$ kg/m³

Phantom section: Right Section

DASY4 Configuration:

- Probe: EX3DV3 - SN3526; ConvF(9.3, 9.3, 9.3); Calibrated: 2007/8/29
- Sensor-Surface: 4mm (Mechanical Surface Detection)
- Electronics: DAE4 Sn679; Calibrated: 2007/4/20
- Phantom: SAM1; Type: SAM 4.0; Serial: TP:1270
- Measurement SW: DASY4, V4.7 Build 53; Postprocessing SW: SEMCAD, V1.8 Build 172

RE_Tilt/Area Scan (61x81x1): Measurement grid: dx=15mm, dy=15mm

Maximum value of SAR (interpolated) = 0.748 mW/g

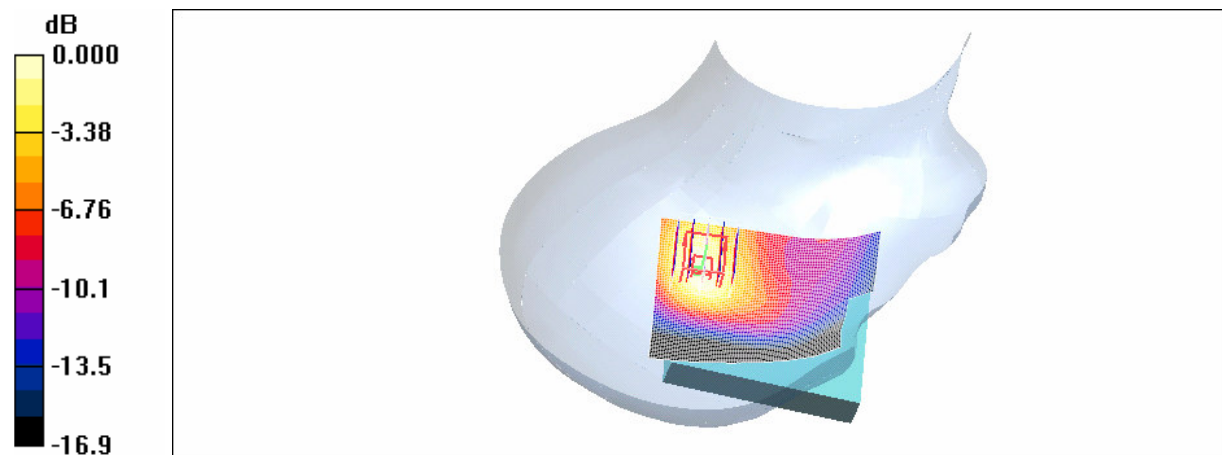
RE_Tilt/Zoom Scan (5x5x7)/Cube 0: Measurement grid: dx=8mm, dy=8mm, dz=5mm

Reference Value = 22.1 V/m; Power Drift = -0.020 dB

Peak SAR (extrapolated) = 1.12 W/kg

SAR(1 g) = 0.680 mW/g; SAR(10 g) = 0.396 mW/g

Maximum value of SAR (measured) = 0.747 mW/g



LE Tilt_CH9262_Slider on

DUT: Wing200; Type: WCDMA; Serial: TY722FY00207

Communication System: WCDMA BAND2; Frequency: 1852.4 MHz; Duty Cycle: 1:1

Medium: WCDMA B2 Medium parameters used (interpolated): $f = 1852.4$ MHz; $\sigma = 1.37$ mho/m; $\epsilon_r = 39.7$; $\rho = 1000$ kg/m³

Phantom section: Left Section

DASY4 Configuration:

- Probe: EX3DV3 - SN3526; ConvF(9.3, 9.3, 9.3); Calibrated: 2007/8/29
- Sensor-Surface: 4mm (Mechanical Surface Detection)
- Electronics: DAE4 Sn679; Calibrated: 2007/4/20
- Phantom: SAM1; Type: SAM 4.0; Serial: TP:1270
- Measurement SW: DASY4, V4.7 Build 53; Postprocessing SW: SEMCAD, V1.8 Build 172

LE_Tilt/Area Scan (61x81x1): Measurement grid: dx=15mm, dy=15mm

Maximum value of SAR (interpolated) = 0.948 mW/g

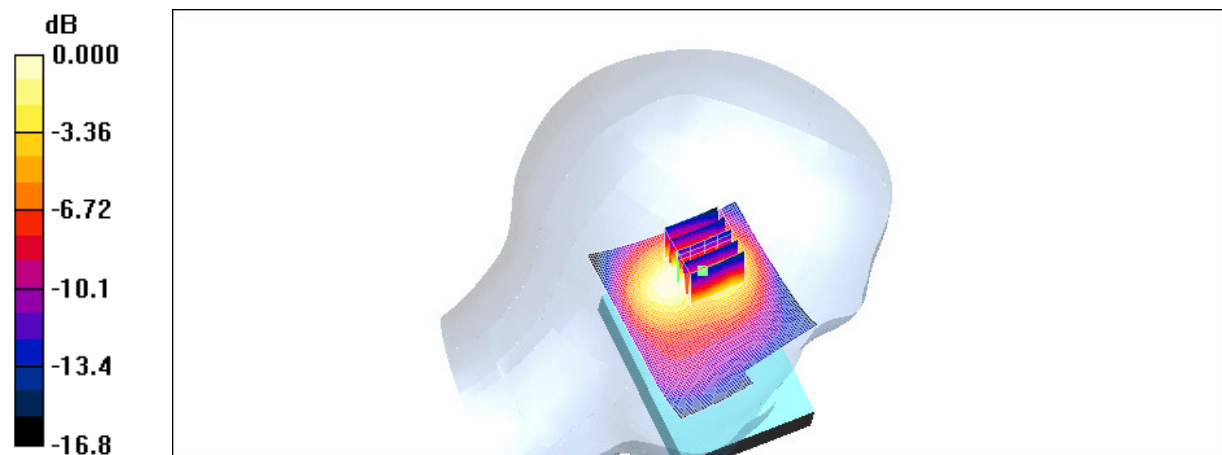
LE_Tilt/Zoom Scan (5x5x7)/Cube 0: Measurement grid: dx=8mm, dy=8mm, dz=5mm

Reference Value = 23.1 V/m; Power Drift = -0.024 dB

Peak SAR (extrapolated) = 1.38 W/kg

SAR(1 g) = 0.822 mW/g; SAR(10 g) = 0.484 mW/g

Maximum value of SAR (measured) = 0.875 mW/g



LE Tilt_CH9400_Slider on

DUT: Wing200; Type: WCDMA; Serial: TY722FY00207

Communication System: WCDMA BAND2; Frequency: 1880 MHz; Duty Cycle: 1:1

Medium: WCDMA B2 Medium parameters used: $f = 1880$ MHz; $\sigma = 1.4$ mho/m; $\epsilon_r = 39.5$; $\rho = 1000$ kg/m³

Phantom section: Left Section

DASY4 Configuration:

- Probe: EX3DV3 - SN3526; ConvF(9.3, 9.3, 9.3); Calibrated: 2007/8/29
- Sensor-Surface: 4mm (Mechanical Surface Detection)
- Electronics: DAE4 Sn679; Calibrated: 2007/4/20
- Phantom: SAM1; Type: SAM 4.0; Serial: TP:1270
- Measurement SW: DASY4, V4.7 Build 53; Postprocessing SW: SEMCAD, V1.8 Build 172

LE_Tilt/Area Scan (61x81x1): Measurement grid: dx=15mm, dy=15mm

Maximum value of SAR (interpolated) = 1.08 mW/g

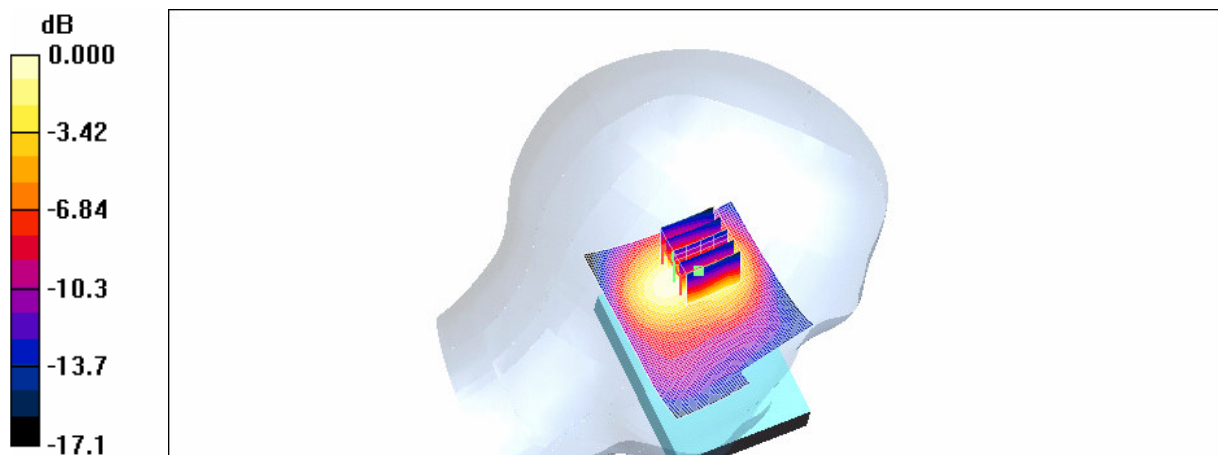
LE_Tilt/Zoom Scan (5x5x7)/Cube 0: Measurement grid: dx=8mm, dy=8mm, dz=5mm

Reference Value = 23.6 V/m; Power Drift = 0.000 dB

Peak SAR (extrapolated) = 1.54 W/kg

SAR(1 g) = 0.905 mW/g; SAR(10 g) = 0.531 mW/g

Maximum value of SAR (measured) = 0.985 mW/g



LE Tilt_CH9538_Slider on

DUT: Wing200; Type: WCDMA; Serial: TY722FY00207

Communication System: WCDMA BAND2; Frequency: 1907.6 MHz; Duty Cycle: 1:1

Medium: WCDMA B2 Medium parameters used: $f = 1908$ MHz; $\sigma = 1.43$ mho/m; $\epsilon_r = 39.4$; $\rho = 1000$ kg/m³

Phantom section: Left Section

DASY4 Configuration:

- Probe: EX3DV3 - SN3526; ConvF(9.3, 9.3, 9.3); Calibrated: 2007/8/29
- Sensor-Surface: 4mm (Mechanical Surface Detection)
- Electronics: DAE4 Sn679; Calibrated: 2007/4/20
- Phantom: SAM1; Type: SAM 4.0; Serial: TP:1270
- Measurement SW: DASY4, V4.7 Build 53; Postprocessing SW: SEMCAD, V1.8 Build 172

LE_Tilt/Area Scan (61x81x1): Measurement grid: dx=15mm, dy=15mm

Maximum value of SAR (interpolated) = 0.942 mW/g

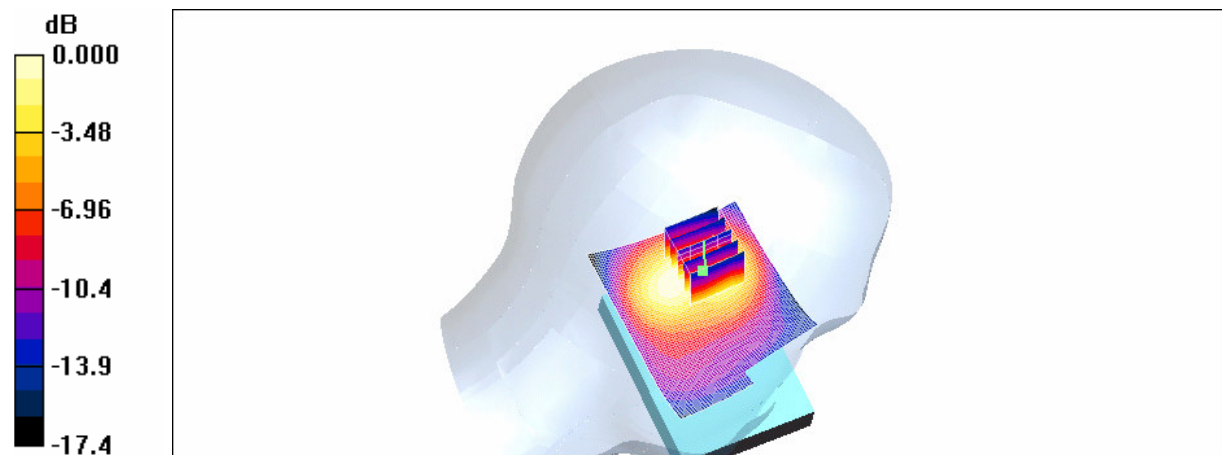
LE_Tilt/Zoom Scan (5x5x7)/Cube 0: Measurement grid: dx=8mm, dy=8mm, dz=5mm

Reference Value = 21.7 V/m; Power Drift = -0.055 dB

Peak SAR (extrapolated) = 1.39 W/kg

SAR(1 g) = 0.811 mW/g; SAR(10 g) = 0.464 mW/g

Maximum value of SAR (measured) = 0.860 mW/g



LE Cheek _CH9400_Slider on repeated with Bluetooth active

DUT: Wing200; Type: WCDMA; Serial: TY722FY00207

Communication System: WCDMA BAND2; Frequency: 1880 MHz; Duty Cycle: 1:1

Medium: WCDMA B2 Medium parameters used: $f = 1880$ MHz; $\sigma = 1.4$ mho/m; $\epsilon_r = 39.5$; $\rho = 1000$ kg/m³

Phantom section: Left Section

DASY4 Configuration:

- Probe: EX3DV3 - SN3526; ConvF(9.3, 9.3, 9.3); Calibrated: 2007/8/29
- Sensor-Surface: 4mm (Mechanical Surface Detection)
- Electronics: DAE4 Sn679; Calibrated: 2007/4/20
- Phantom: SAM1; Type: SAM 4.0; Serial: TP:1270
- Measurement SW: DASY4, V4.7 Build 53; Postprocessing SW: SEMCAD, V1.8 Build 172

LE_Cheek/Area Scan (61x81x1): Measurement grid: dx=15mm, dy=15mm

Maximum value of SAR (interpolated) = 1.13 mW/g

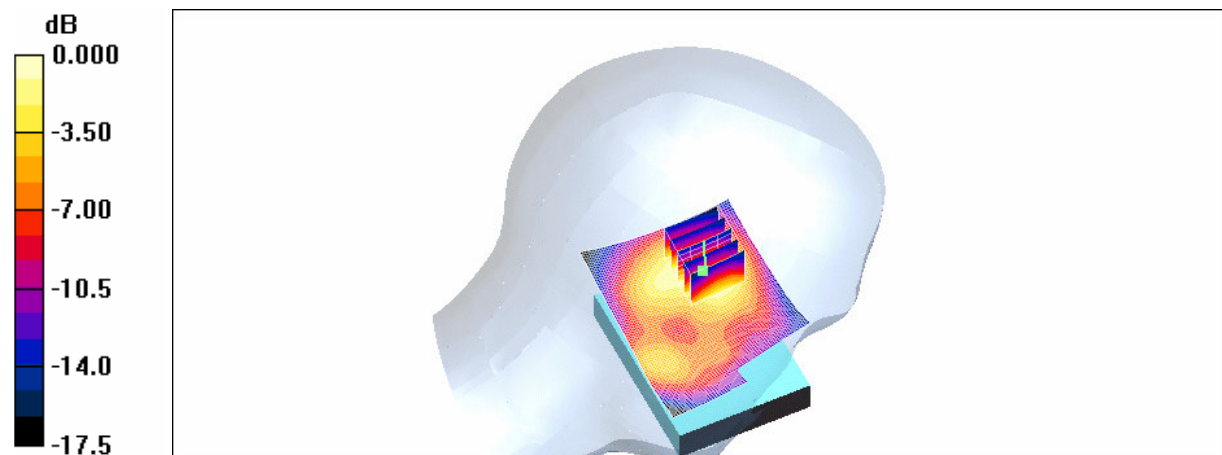
LE_Cheek/Zoom Scan (5x5x7)/Cube 0: Measurement grid: dx=8mm, dy=8mm, dz=5mm

Reference Value = 20.5 V/m; Power Drift = -0.153 dB

Peak SAR (extrapolated) = 1.73 W/kg

SAR(1 g) = 0.995 mW/g; SAR(10 g) = 0.554 mW/g

Maximum value of SAR (measured) = 1.07 mW/g



0 dB = 1.07mW/g

LE Cheek_CH9400_Slider on repeated with MemoryCard active

DUT: Wing200; Type: WCDMA; Serial: TY722FY00207

Communication System: WCDMA BAND2; Frequency: 1880 MHz; Duty Cycle: 1:1

Medium: WCDMA B2 Medium parameters used: $f = 1880$ MHz; $\sigma = 1.4$ mho/m; $\epsilon_r = 39.5$; $\rho = 1000$ kg/m³

Phantom section: Left Section

DASY4 Configuration:

- Probe: EX3DV3 - SN3526; ConvF(9.3, 9.3, 9.3); Calibrated: 2007/8/29
- Sensor-Surface: 4mm (Mechanical Surface Detection)
- Electronics: DAE4 Sn679; Calibrated: 2007/4/20
- Phantom: SAM1; Type: SAM 4.0; Serial: TP:1270
- Measurement SW: DASY4, V4.7 Build 53; Postprocessing SW: SEMCAD, V1.8 Build 172

LE_Cheek/Area Scan (61x81x1): Measurement grid: dx=15mm, dy=15mm

Maximum value of SAR (interpolated) = 1.10 mW/g

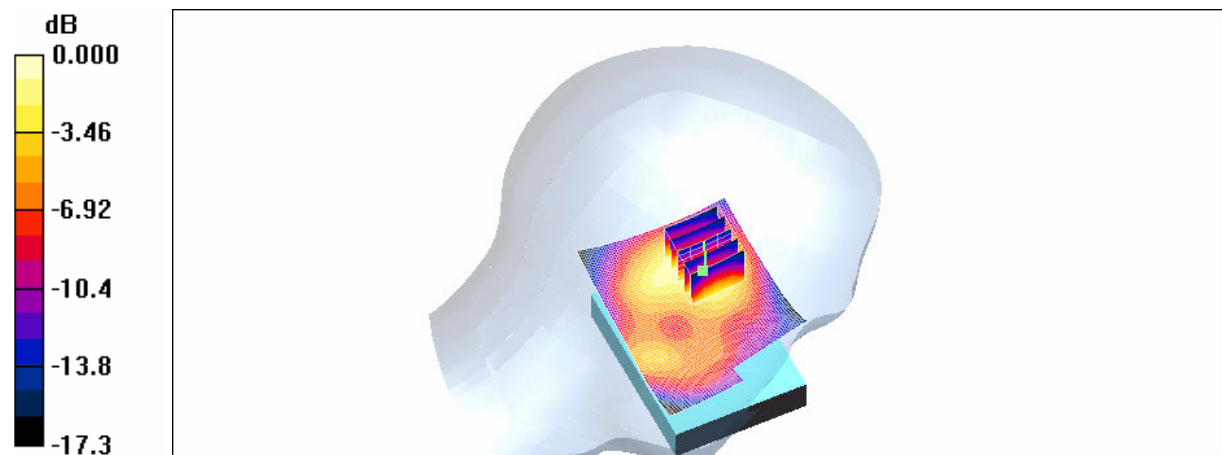
LE_Cheek/Zoom Scan (5x5x7)/Cube 0: Measurement grid: dx=8mm, dy=8mm, dz=5mm

Reference Value = 20.3 V/m; Power Drift = 0.049 dB

Peak SAR (extrapolated) = 1.73 W/kg

SAR(1 g) = 0.988 mW/g; SAR(10 g) = 0.549 mW/g

Maximum value of SAR (measured) = 1.07 mW/g



LE Cheek_CH9400_Slider on repeated with Samsung Battery

DUT: Wing200; Type: WCDMA; Serial: TY722FY00207

Communication System: WCDMA BAND2; Frequency: 1880 MHz; Duty Cycle: 1:1

Medium: WCDMA B2 Medium parameters used: $f = 1880$ MHz; $\sigma = 1.4$ mho/m; $\epsilon_r = 39.5$; $\rho = 1000$ kg/m³

Phantom section: Left Section

DASY4 Configuration:

- Probe: EX3DV3 - SN3526; ConvF(9.3, 9.3, 9.3); Calibrated: 2007/8/29
- Sensor-Surface: 4mm (Mechanical Surface Detection)
- Electronics: DAE4 Sn679; Calibrated: 2007/4/20
- Phantom: SAM1; Type: SAM 4.0; Serial: TP:1270
- Measurement SW: DASY4, V4.7 Build 53; Postprocessing SW: SEMCAD, V1.8 Build 172

LE_Cheek/Area Scan (61x81x1): Measurement grid: dx=15mm, dy=15mm

Maximum value of SAR (interpolated) = 1.17 mW/g

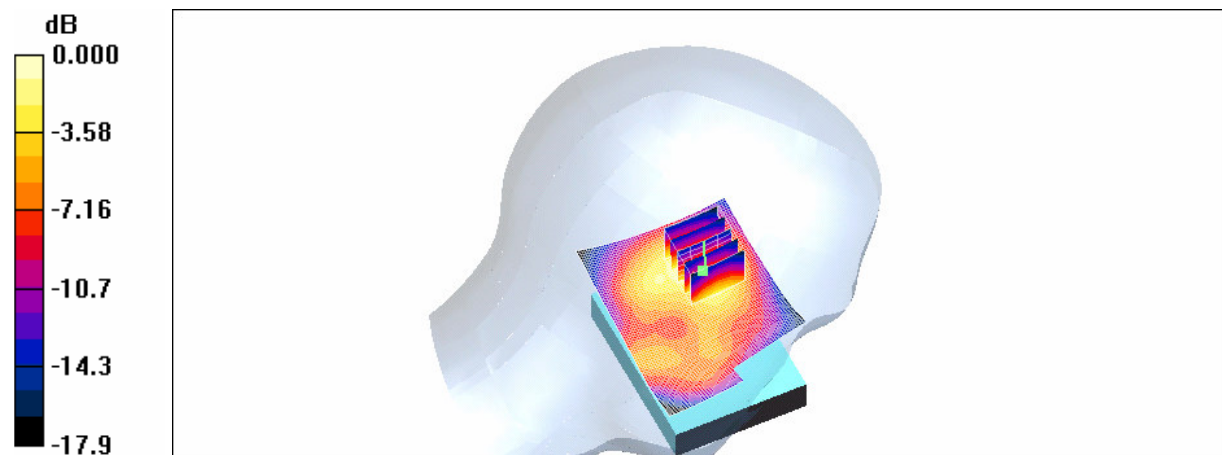
LE_Cheek/Zoom Scan (5x5x7)/Cube 0: Measurement grid: dx=8mm, dy=8mm, dz=5mm

Reference Value = 20.3 V/m; Power Drift = -0.033 dB

Peak SAR (extrapolated) = 1.86 W/kg

SAR(1 g) = 1.05 mW/g; SAR(10 g) = 0.575 mW/g

Maximum value of SAR (measured) = 1.15 mW/g



0 dB = 1.15mW/g

LE Cheek_CH9400_Slider on repeated with Sanyo Battery

DUT: Wing200; Type: WCDMA; Serial: TY722FY00207

Communication System: WCDMA BAND2; Frequency: 1880 MHz; Duty Cycle: 1:1

Medium: WCDMA B2 Medium parameters used: $f = 1880$ MHz; $\sigma = 1.4$ mho/m; $\epsilon_r = 39.5$; $\rho = 1000$ kg/m³

Phantom section: Left Section

DASY4 Configuration:

- Probe: EX3DV3 - SN3526; ConvF(9.3, 9.3, 9.3); Calibrated: 2007/8/29
- Sensor-Surface: 4mm (Mechanical Surface Detection)
- Electronics: DAE4 Sn679; Calibrated: 2007/4/20
- Phantom: SAM1; Type: SAM 4.0; Serial: TP:1270
- Measurement SW: DASY4, V4.7 Build 53; Postprocessing SW: SEMCAD, V1.8 Build 172

LE_Cheek/Area Scan (61x81x1): Measurement grid: dx=15mm, dy=15mm

Maximum value of SAR (interpolated) = 1.11 mW/g

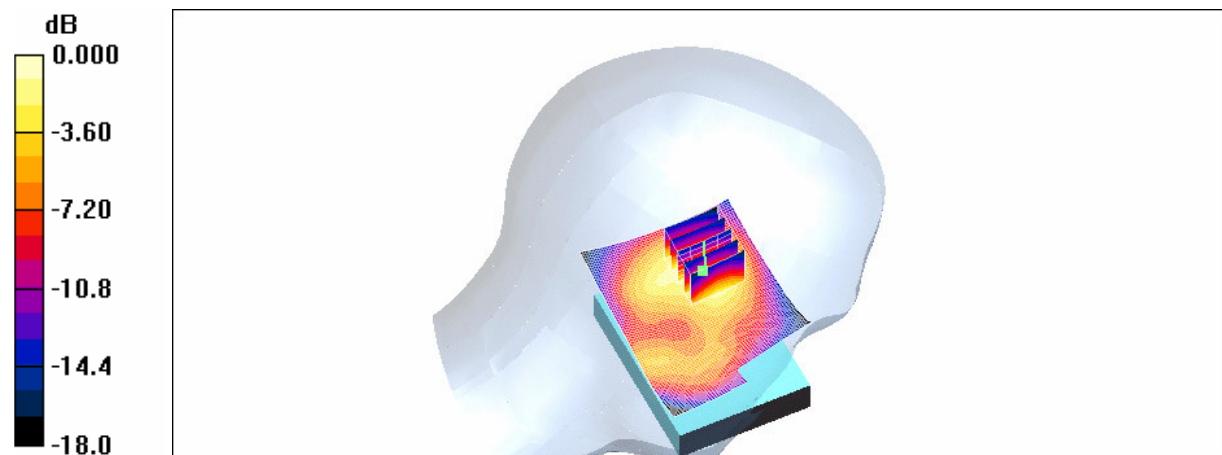
LE_Cheek/Zoom Scan (5x5x7)/Cube 0: Measurement grid: dx=8mm, dy=8mm, dz=5mm

Reference Value = 20.3 V/m; Power Drift = -0.185 dB

Peak SAR (extrapolated) = 1.76 W/kg

SAR(1 g) = 1 mW/g; SAR(10 g) = 0.547 mW/g

Maximum value of SAR (measured) = 1.11 mW/g



LE Cheek_CH9400_Slider on repeated with WiFi b active

DUT: Wing200; Type: WCDMA; Serial: TY722FY00207

Communication System: WCDMA BAND2; Frequency: 1880 MHz; Duty Cycle: 1:1

Medium: WCDMA B2 Medium parameters used: $f = 1880$ MHz; $\sigma = 1.4$ mho/m; $\epsilon_r = 39.5$; $\rho = 1000$ kg/m³

Phantom section: Left Section

DASY4 Configuration:

- Probe: EX3DV3 - SN3526; ConvF(9.3, 9.3, 9.3); Calibrated: 2007/8/29
- Sensor-Surface: 4mm (Mechanical Surface Detection)
- Electronics: DAE4 Sn679; Calibrated: 2007/4/20
- Phantom: SAM2; Type: SAM 4.0; Serial: TP:1270
- Measurement SW: DASY4, V4.7 Build 53; Postprocessing SW: SEMCAD, V1.8 Build 172

LE_Cheek/Area Scan (61x81x1): Measurement grid: dx=15mm, dy=15mm

Maximum value of SAR (interpolated) = 1.12 mW/g

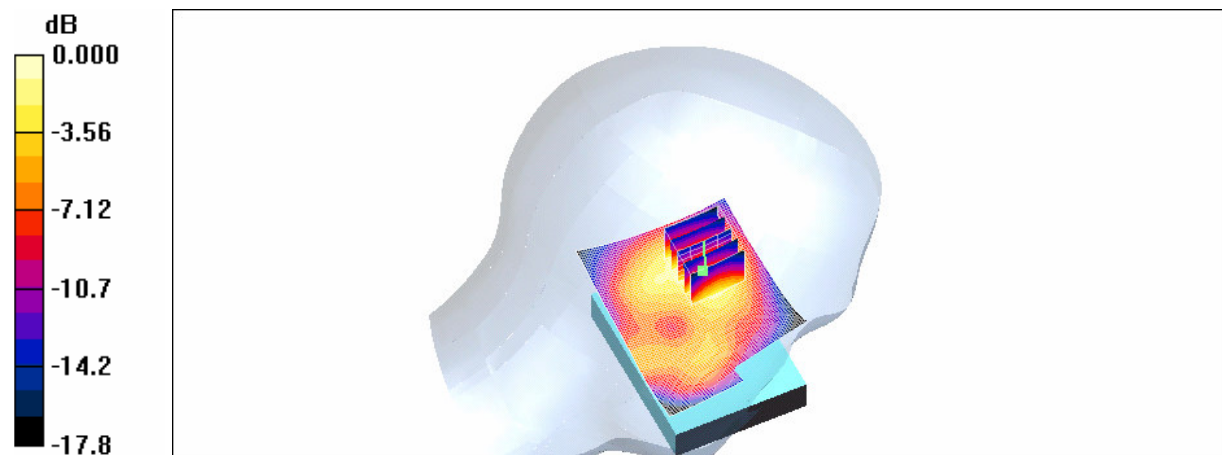
LE_Cheek/Zoom Scan (5x5x7)/Cube 0: Measurement grid: dx=8mm, dy=8mm, dz=5mm

Reference Value = 20.1 V/m; Power Drift = -0.197 dB

Peak SAR (extrapolated) = 1.78 W/kg

SAR(1 g) = 1.01 mW/g; SAR(10 g) = 0.560 mW/g

Maximum value of SAR (measured) = 1.11 mW/g



0 dB = 1.11mW/g

LE Cheek_CH9400_Slider on repeated WiFi g active

DUT: Wing200; Type: WCDMA; Serial: TY722FY00207

Communication System: WCDMA BAND2; Frequency: 1880 MHz; Duty Cycle: 1:1

Medium: WCDMA B2 Medium parameters used: $f = 1880$ MHz; $\sigma = 1.4$ mho/m; $\epsilon_r = 39.5$; $\rho = 1000$ kg/m³

Phantom section: Left Section

DASY4 Configuration:

- Probe: EX3DV3 - SN3526; ConvF(9.3, 9.3, 9.3); Calibrated: 2007/8/29
- Sensor-Surface: 4mm (Mechanical Surface Detection)
- Electronics: DAE4 Sn679; Calibrated: 2007/4/20
- Phantom: SAM2; Type: SAM 4.0; Serial: TP:1270
- Measurement SW: DASY4, V4.7 Build 53; Postprocessing SW: SEMCAD, V1.8 Build 172

LE_Cheek/Area Scan (61x81x1): Measurement grid: dx=15mm, dy=15mm

Maximum value of SAR (interpolated) = 1.10 mW/g

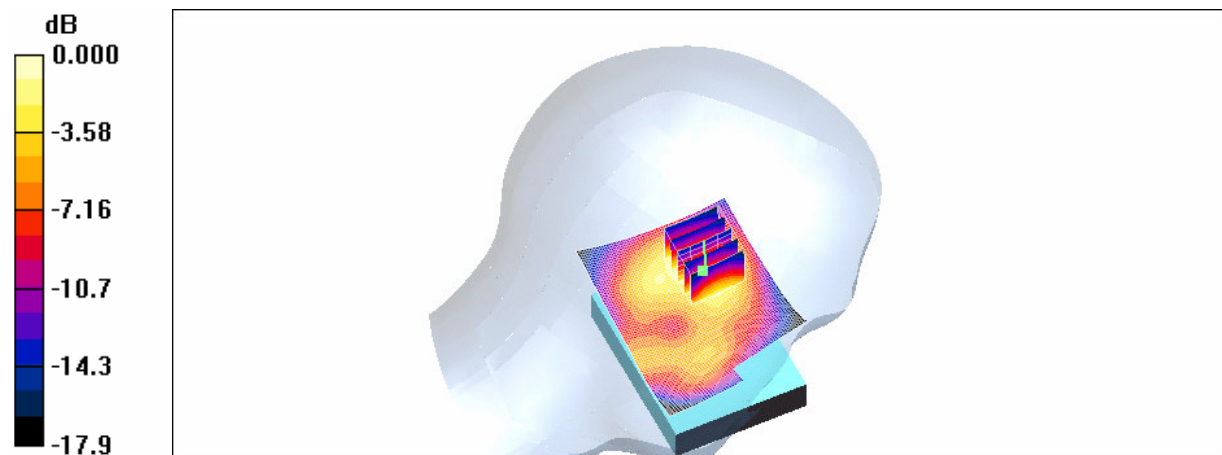
LE_Cheek/Zoom Scan (5x5x7)/Cube 0: Measurement grid: dx=8mm, dy=8mm, dz=5mm

Reference Value = 19.7 V/m; Power Drift = -0.074 dB

Peak SAR (extrapolated) = 1.74 W/kg

SAR(1 g) = 0.990 mW/g; SAR(10 g) = 0.545 mW/g

Maximum value of SAR (measured) = 1.08 mW/g



0 dB = 1.08mW/g

Body_CH9262

DUT: Wing200; Type: WCDMA; Serial: TY722FY00207

Communication System: WCDMA BAND2; Frequency: 1852.4 MHz;Duty Cycle: 1:1

Medium: WCDMA B2 Medium parameters used (interpolated): $f = 1852.4$ MHz; $\sigma = 1.54$ mho/m; $\epsilon_r = 52.6$; $\rho = 1000$ kg/m³

Phantom section: Flat Section

DASY4 Configuration:

- Probe: EX3DV3 - SN3526; ConvF(9.04, 9.04, 9.04); Calibrated: 2007/8/29
- Sensor-Surface: 4mm (Mechanical Surface Detection)
- Electronics: DAE4 Sn679; Calibrated: 2007/4/20
- Phantom: SAM1; Type: SAM 4.0; Serial: TP:1419
- Measurement SW: DASY4, V4.7 Build 53; Postprocessing SW: SEMCAD, V1.8 Build 172

Body/Area Scan (51x81x1): Measurement grid: dx=15mm, dy=15mm

Maximum value of SAR (interpolated) = 0.918 mW/g

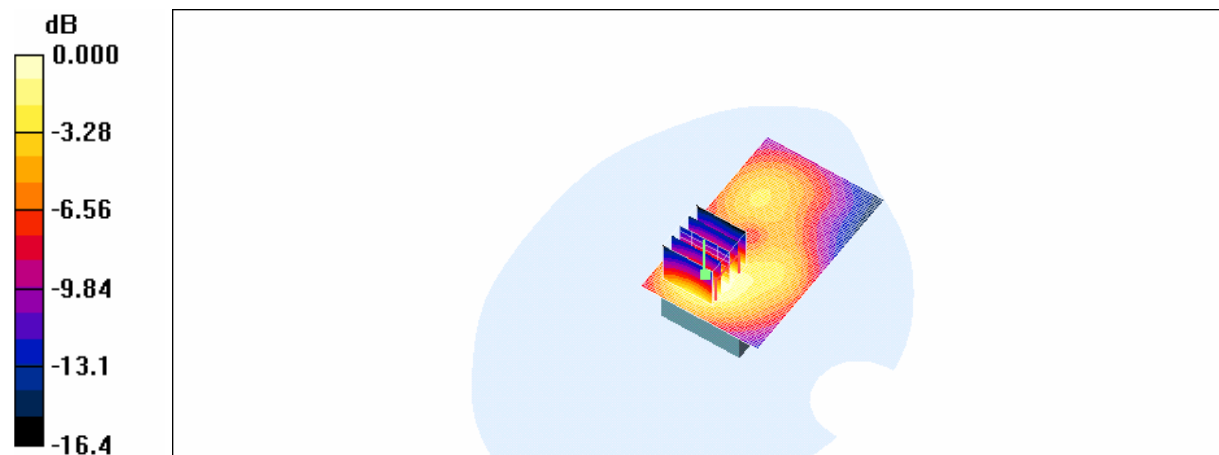
Body/Zoom Scan (5x5x7)/Cube 0: Measurement grid: dx=8mm, dy=8mm, dz=5mm

Reference Value = 16.0 V/m; Power Drift = -0.171 dB

Peak SAR (extrapolated) = 1.41 W/kg

SAR(1 g) = 0.857 mW/g; SAR(10 g) = 0.504 mW/g

Maximum value of SAR (measured) = 0.921 mW/g



0 dB = 0.921mW/g

Body_CH9400

DUT: Wing200; Type: WCDMA; Serial: TY722FY00207

Communication System: WCDMA BAND2; Frequency: 1880 MHz; Duty Cycle: 1:1

Medium: WCDMA B2 Medium parameters used (interpolated): $f = 1880$ MHz; $\sigma = 1.56$ mho/m; $\epsilon_r = 52.4$; $\rho = 1000$ kg/m³

Phantom section: Flat Section

DASY4 Configuration:

- Probe: EX3DV3 - SN3526; ConvF(9.04, 9.04, 9.04); Calibrated: 2007/8/29
- Sensor-Surface: 4mm (Mechanical Surface Detection)
- Electronics: DAE4 Sn679; Calibrated: 2007/4/20
- Phantom: SAM1; Type: SAM 4.0; Serial: TP:1419
- Measurement SW: DASY4, V4.7 Build 53; Postprocessing SW: SEMCAD, V1.8 Build 172

Body/Area Scan (51x81x1): Measurement grid: dx=15mm, dy=15mm

Maximum value of SAR (interpolated) = 1.04 mW/g

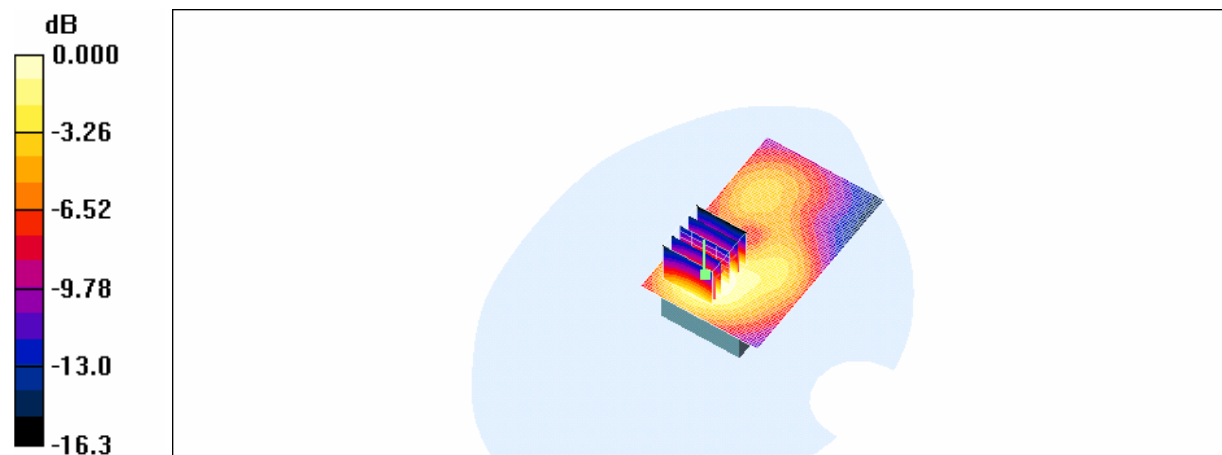
Body/Zoom Scan (5x5x7)/Cube 0: Measurement grid: dx=8mm, dy=8mm, dz=5mm

Reference Value = 16.7 V/m; Power Drift = -0.017 dB

Peak SAR (extrapolated) = 1.52 W/kg

SAR(1 g) = 0.934 mW/g; SAR(10 g) = 0.554 mW/g

Maximum value of SAR (measured) = 0.999 mW/g



0 dB = 0.999mW/g

Body_CH9538

DUT: Wing200; Type: WCDMA; Serial: TY722FY00207

Communication System: WCDMA BAND2; Frequency: 1907.6 MHz; Duty Cycle: 1:1

Medium: WCDMA B2 Medium parameters used (interpolated): $f = 1907.6$ MHz; $\sigma = 1.59$ mho/m; $\epsilon_r = 52.3$; $\rho = 1000$ kg/m³

Phantom section: Flat Section

DASY4 Configuration:

- Probe: EX3DV3 - SN3526; ConvF(9.04, 9.04, 9.04); Calibrated: 2007/8/29
- Sensor-Surface: 4mm (Mechanical Surface Detection)
- Electronics: DAE4 Sn679; Calibrated: 2007/4/20
- Phantom: SAM1; Type: SAM 4.0; Serial: TP:1419
- Measurement SW: DASY4, V4.7 Build 53; Postprocessing SW: SEMCAD, V1.8 Build 172

Body/Area Scan (51x81x1): Measurement grid: dx=15mm, dy=15mm

Maximum value of SAR (interpolated) = 0.852 mW/g

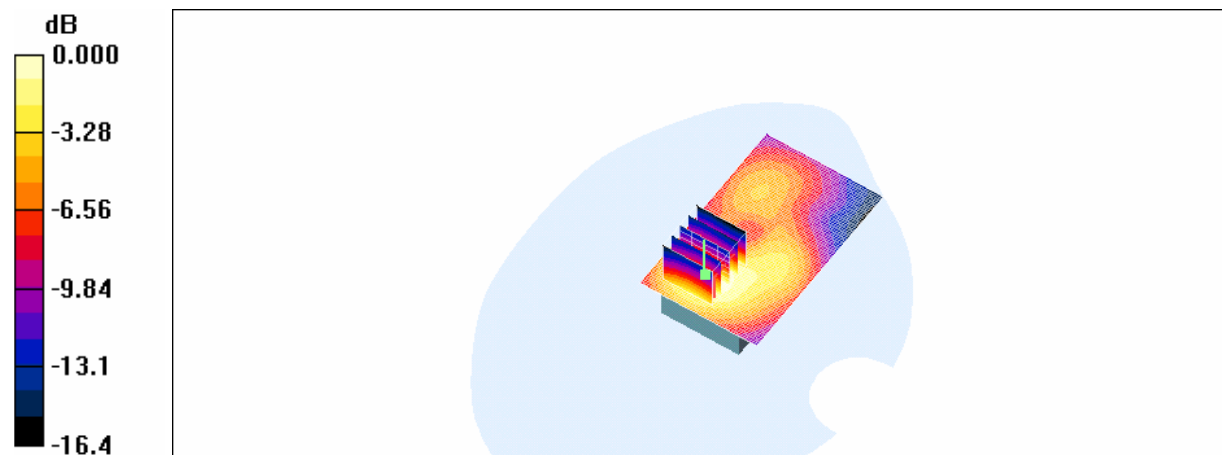
Body/Zoom Scan (5x5x7)/Cube 0: Measurement grid: dx=8mm, dy=8mm, dz=5mm

Reference Value = 15.6 V/m; Power Drift = -0.044 dB

Peak SAR (extrapolated) = 1.29 W/kg

SAR(1 g) = 0.779 mW/g; SAR(10 g) = 0.458 mW/g

Maximum value of SAR (measured) = 0.843 mW/g



0 dB = 0.843mW/g

Body_CH9400 with Holster 2

DUT: Wing200; Type: WCDMA; Serial: TY722FY00207

Communication System: WCDMA BAND2; Frequency: 1880 MHz; Duty Cycle: 1:1

Medium: WCDMA B2 Medium parameters used (interpolated): $f = 1880$ MHz; $\sigma = 1.56$ mho/m; $\epsilon_r = 52.4$; $\rho = 1000$ kg/m³

- Probe: EX3DV3 - SN3526; ConvF(9.04, 9.04, 9.04); Calibrated: 2007/8/29
- Sensor-Surface: 4mm (Mechanical Surface Detection)
- Electronics: DAE4 Sn679; Calibrated: 2007/4/20
- Phantom: SAM1; Type: SAM 4.0; Serial: TP:1419
- Measurement SW: DASY4, V4.7 Build 53; Postprocessing SW: SEMCAD, V1.8 Build 172

Body/Area Scan (51x91x1): Measurement grid: dx=15mm, dy=15mm

Maximum value of SAR (interpolated) = 0.840 mW/g

Body/Zoom Scan (5x5x7)/Cube 0: Measurement grid: dx=8mm, dy=8mm, dz=5mm

Reference Value = 9.54 V/m; Power Drift = -0.105 dB

Peak SAR (extrapolated) = 1.23 W/kg

SAR(1 g) = 0.759 mW/g; SAR(10 g) = 0.466 mW/g

Maximum value of SAR (measured) = 0.810 mW/g

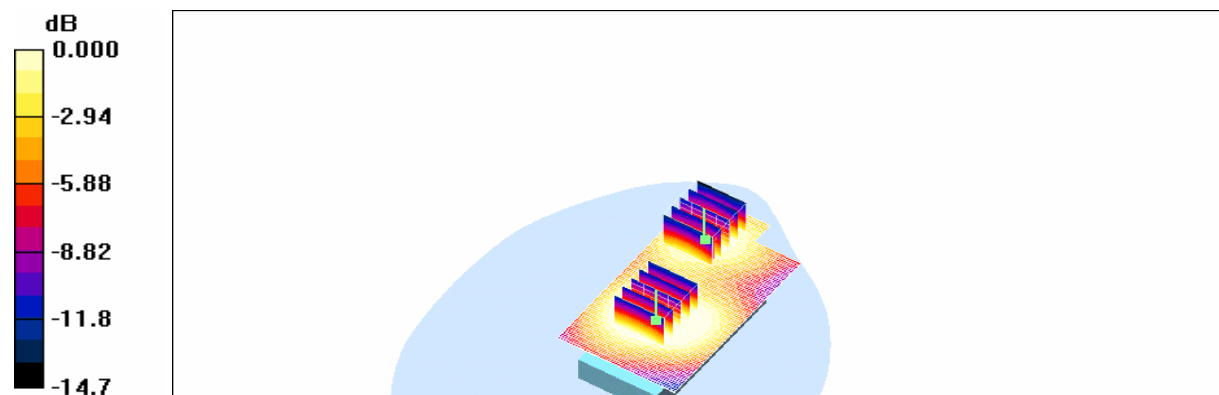
Body/Zoom Scan (5x5x7)/Cube 1: Measurement grid: dx=8mm, dy=8mm, dz=5mm

Reference Value = 9.54 V/m; Power Drift = -0.105 dB

Peak SAR (extrapolated) = 0.787 W/kg

SAR(1 g) = 0.506 mW/g; SAR(10 g) = 0.319 mW/g

Maximum value of SAR (measured) = 0.545 mW/g



Body_CH9400_ repeated with HSDPA mode

DUT: Wing200; Type: WCDMA; Serial: TY722FY00207

Communication System: WCDMA BAND2; Frequency: 1880 MHz; Duty Cycle: 1:1

Medium: M1800 & 1900 Medium parameters used (interpolated): $f = 1880$ MHz; $\sigma = 1.56$ mho/m; $\epsilon_r = 52.5$; $\rho = 1000$ kg/m³

Phantom section: Flat Section

DASY4 Configuration:

- Probe: EX3DV3 - SN3526; ConvF(9.04, 9.04, 9.04); Calibrated: 2007/8/29
- Sensor-Surface: 4mm (Mechanical Surface Detection)
- Electronics: DAE4 Sn679; Calibrated: 2007/4/20
- Phantom: SAM2; Type: SAM 4.0; Serial: TP:1270
- Measurement SW: DASY4, V4.7 Build 53; Postprocessing SW: SEMCAD, V1.8 Build 172

Body/Area Scan (51x91x1): Measurement grid: dx=15mm, dy=15mm

Maximum value of SAR (interpolated) = 0.901 mW/g

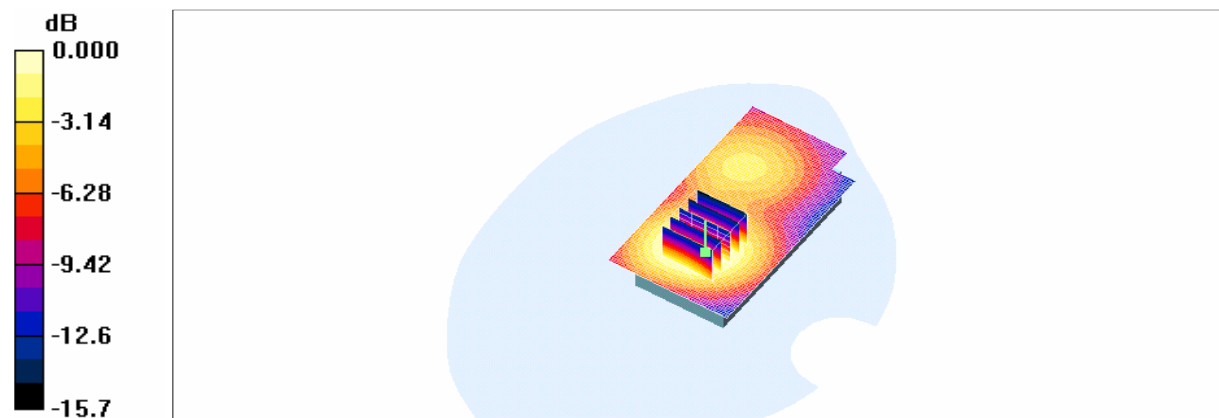
Body/Zoom Scan (5x5x7)/Cube 0: Measurement grid: dx=8mm, dy=8mm, dz=5mm

Reference Value = 18.7 V/m; Power Drift = 0.058 dB

Peak SAR (extrapolated) = 1.37 W/kg

SAR(1 g) = 0.829 mW/g; SAR(10 g) = 0.500 mW/g

Maximum value of SAR (measured) = 0.873 mW/g



0 dB = 0.873mW/g

RE Cheek_CH4183_Slider off

DUT: Wing200; Type: WCDMA; Serial: TY722FY00207

Communication System: WCDMA BAND5; Frequency: 836.6 MHz; Duty Cycle: 1:1

Medium: WCDMA B5 Medium parameters used (interpolated): $f = 836.6$ MHz; $\sigma = 0.876$ mho/m; $\epsilon_r = 41.6$; $\rho = 1000$ kg/m³

Phantom section: Right Section

DASY4 Configuration:

- Probe: EX3DV3 - SN3526; ConvF(11.48, 11.48, 11.48); Calibrated: 2007/8/29
- Sensor-Surface: 4mm (Mechanical Surface Detection)
- Electronics: DAE4 Sn679; Calibrated: 2007/4/20
- Phantom: SAM1; Type: SAM 4.0; Serial: TP:1419
- Measurement SW: DASY4, V4.7 Build 53; Postprocessing SW: SEMCAD, V1.8 Build 172

RE_Cheek/Area Scan (51x91x1): Measurement grid: dx=15mm, dy=15mm

Maximum value of SAR (interpolated) = 0.494 mW/g

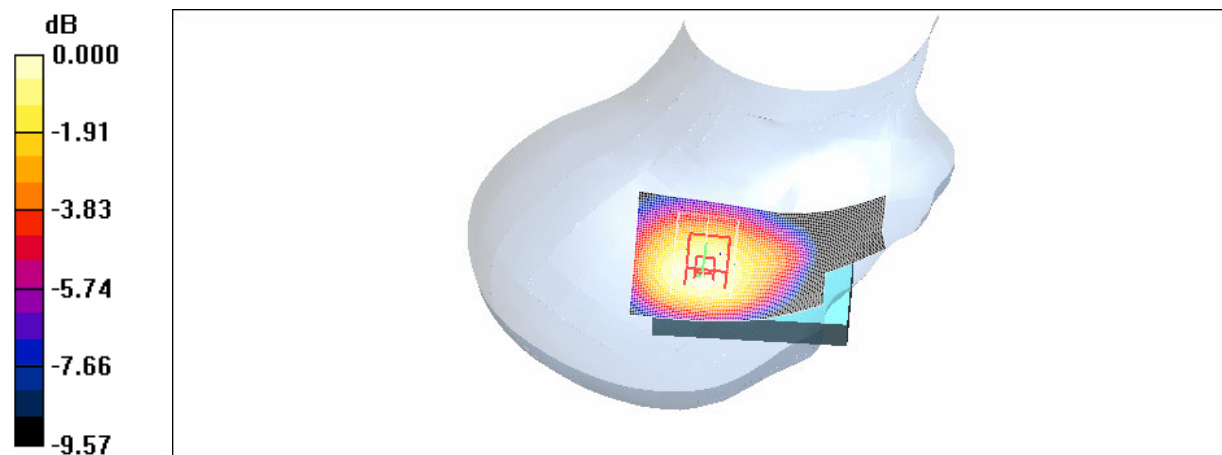
RE_Cheek/Zoom Scan (5x5x7)/Cube 0: Measurement grid: dx=8mm, dy=8mm, dz=5mm

Reference Value = 21.5 V/m; Power Drift = 0.143 dB

Peak SAR (extrapolated) = 0.616 W/kg

SAR(1 g) = 0.488 mW/g; SAR(10 g) = 0.357 mW/g

Maximum value of SAR (measured) = 0.515 mW/g



LE Cheek_CH4183_Slider off

DUT: Wing200; Type: WCDMA; Serial: TY722FY00207

Communication System: WCDMA BAND5; Frequency: 836.6 MHz; Duty Cycle: 1:1

Medium: WCDMA B5 Medium parameters used (interpolated): $f = 836.6$ MHz; $\sigma = 0.876$ mho/m; $\epsilon_r = 41.6$; $\rho = 1000$ kg/m³

Phantom section: Left Section

DASY4 Configuration:

- Probe: EX3DV3 - SN3526; ConvF(11.48, 11.48, 11.48); Calibrated: 2007/8/29
- Sensor-Surface: 4mm (Mechanical Surface Detection)
- Electronics: DAE4 Sn679; Calibrated: 2007/4/20
- Phantom: SAM1; Type: SAM 4.0; Serial: TP:1419
- Measurement SW: DASY4, V4.7 Build 53; Postprocessing SW: SEMCAD, V1.8 Build 172

LE_Cheek/Area Scan (51x91x1): Measurement grid: dx=15mm, dy=15mm

Maximum value of SAR (interpolated) = 0.492 mW/g

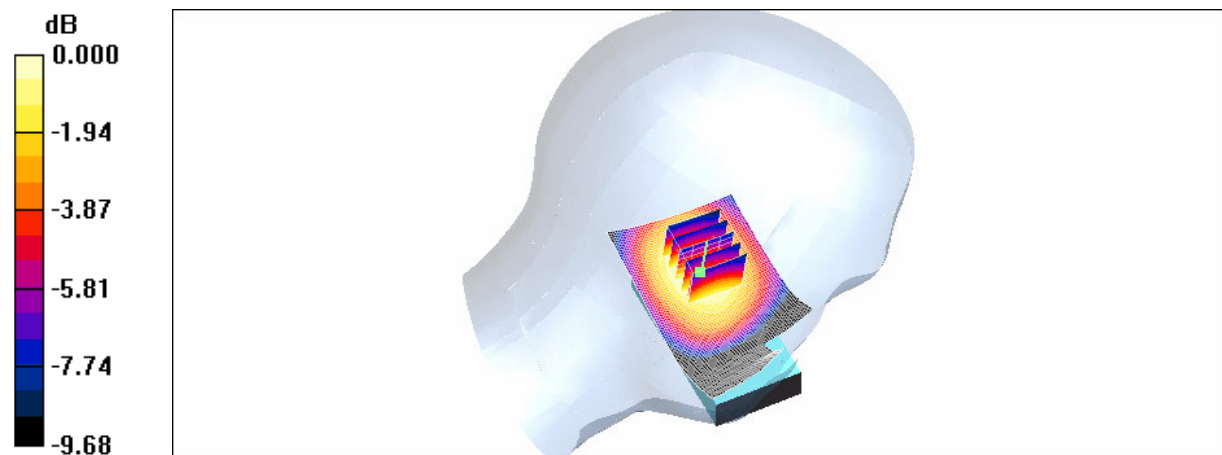
LE_Cheek/Zoom Scan (5x5x7)/Cube 0: Measurement grid: dx=8mm, dy=8mm, dz=5mm

Reference Value = 21.3 V/m; Power Drift = -0.072 dB

Peak SAR (extrapolated) = 0.608 W/kg

SAR(1 g) = 0.471 mW/g; SAR(10 g) = 0.341 mW/g

Maximum value of SAR (measured) = 0.497 mW/g



RE Tilt_CH4183_Slider off

DUT: Wing200; Type: WCDMA; Serial: TY722FY00207

Communication System: WCDMA BAND5; Frequency: 836.6 MHz; Duty Cycle: 1:1

Medium: WCDMA B5 Medium parameters used (interpolated): $f = 836.6$ MHz; $\sigma = 0.876$ mho/m; $\epsilon_r = 41.6$; $\rho = 1000$ kg/m³

Phantom section: Right Section

DASY4 Configuration:

- Probe: EX3DV3 - SN3526; ConvF(11.48, 11.48, 11.48); Calibrated: 2007/8/29
- Sensor-Surface: 4mm (Mechanical Surface Detection)
- Electronics: DAE4 Sn679; Calibrated: 2007/4/20
- Phantom: SAM1; Type: SAM 4.0; Serial: TP:1419
- Measurement SW: DASY4, V4.7 Build 53; Postprocessing SW: SEMCAD, V1.8 Build 172

RE_Tilt/Area Scan (51x91x1): Measurement grid: dx=15mm, dy=15mm

Maximum value of SAR (interpolated) = 0.407 mW/g

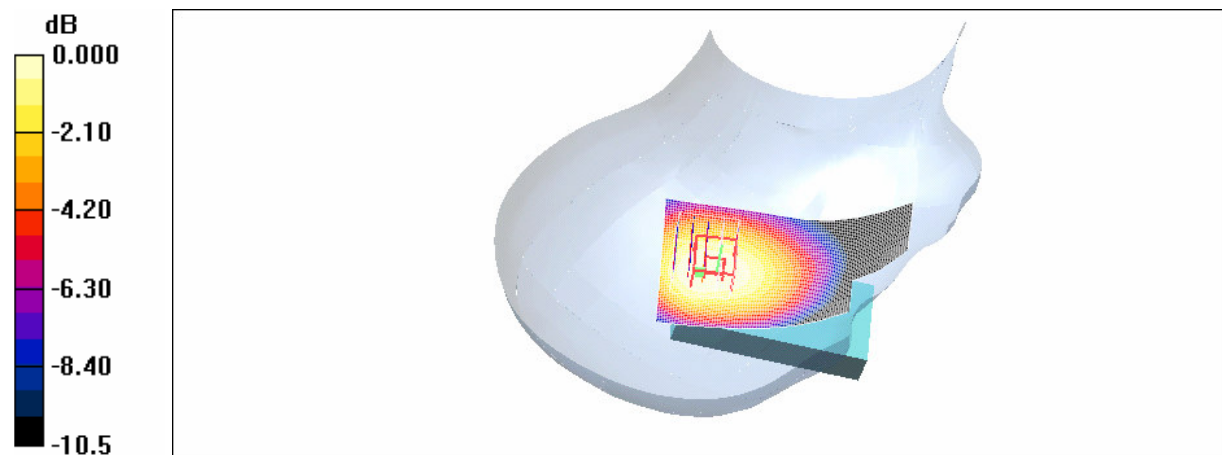
RE_Tilt/Zoom Scan (5x5x7)/Cube 0: Measurement grid: dx=8mm, dy=8mm, dz=5mm

Reference Value = 20.9 V/m; Power Drift = 0.065 dB

Peak SAR (extrapolated) = 0.482 W/kg

SAR(1 g) = 0.373 mW/g; SAR(10 g) = 0.275 mW/g

Maximum value of SAR (measured) = 0.393 mW/g



0 dB = 0.393mW/g