



1. External Photographs of EUT

Model Name: TOPA210





Model Name: TOPA210





**Model Name: TOPA210**



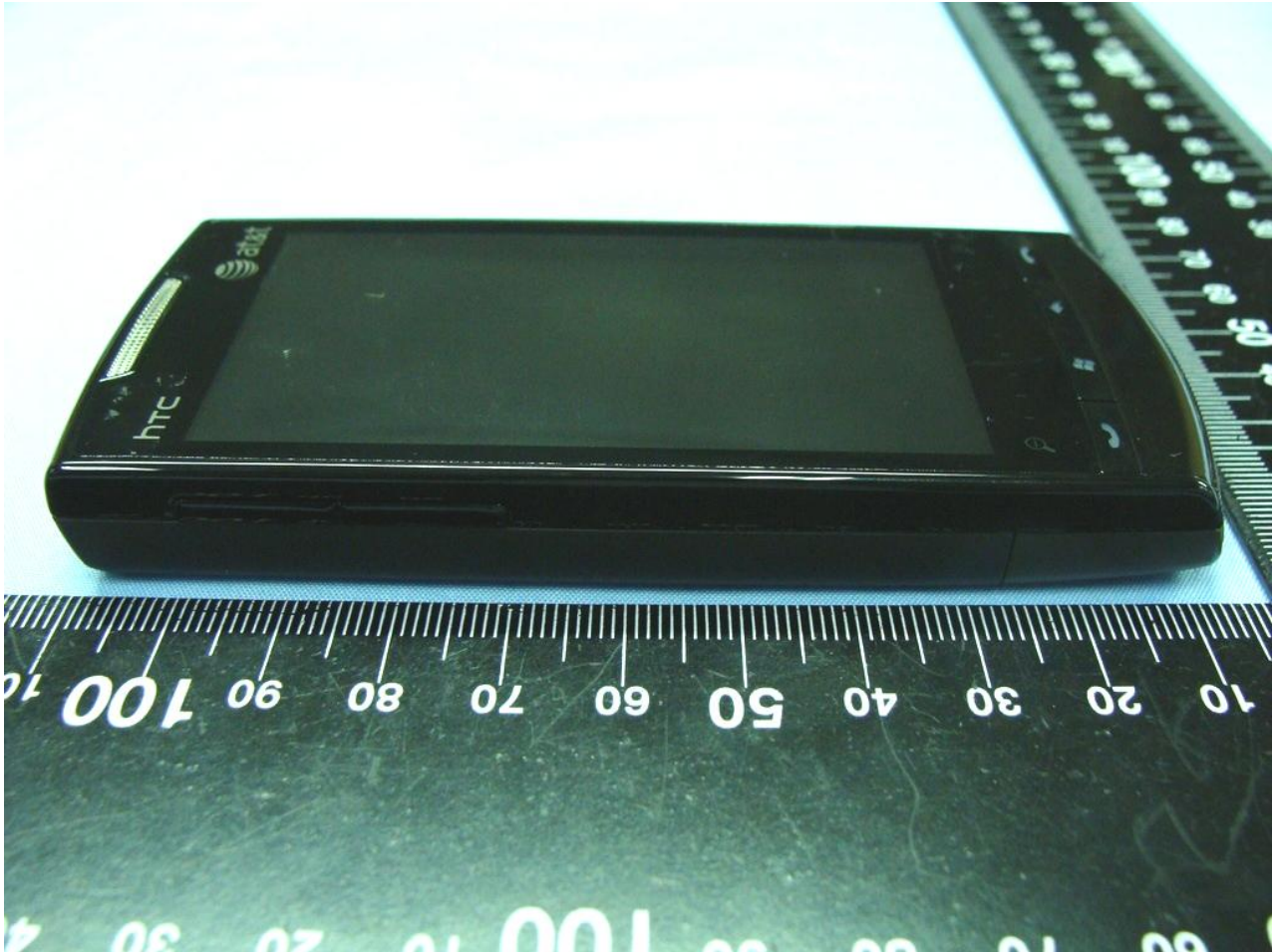


**Model Name: TOPA210**





**Model Name: TOPA210**





**Model Name: TOPA210**





Model Name: TOPA210

PDA Phone 2





Model Name: TOPA210







**Model Name: TOPA210**

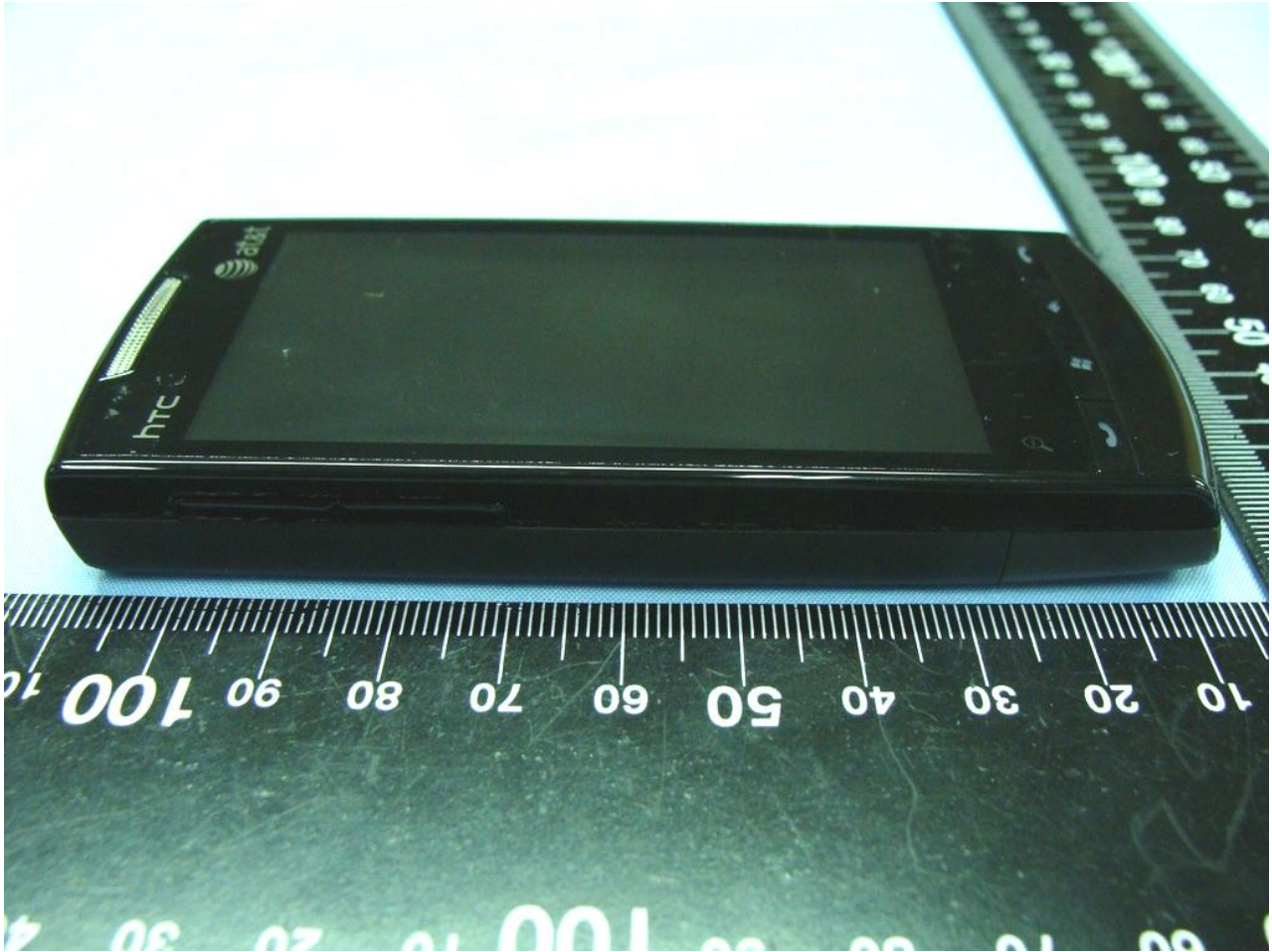




**Model Name: TOPA210**



Model Name: TOPA210





**Model Name: TOPA210**





2. Photographs of Accessories

Model Name: TOPA210

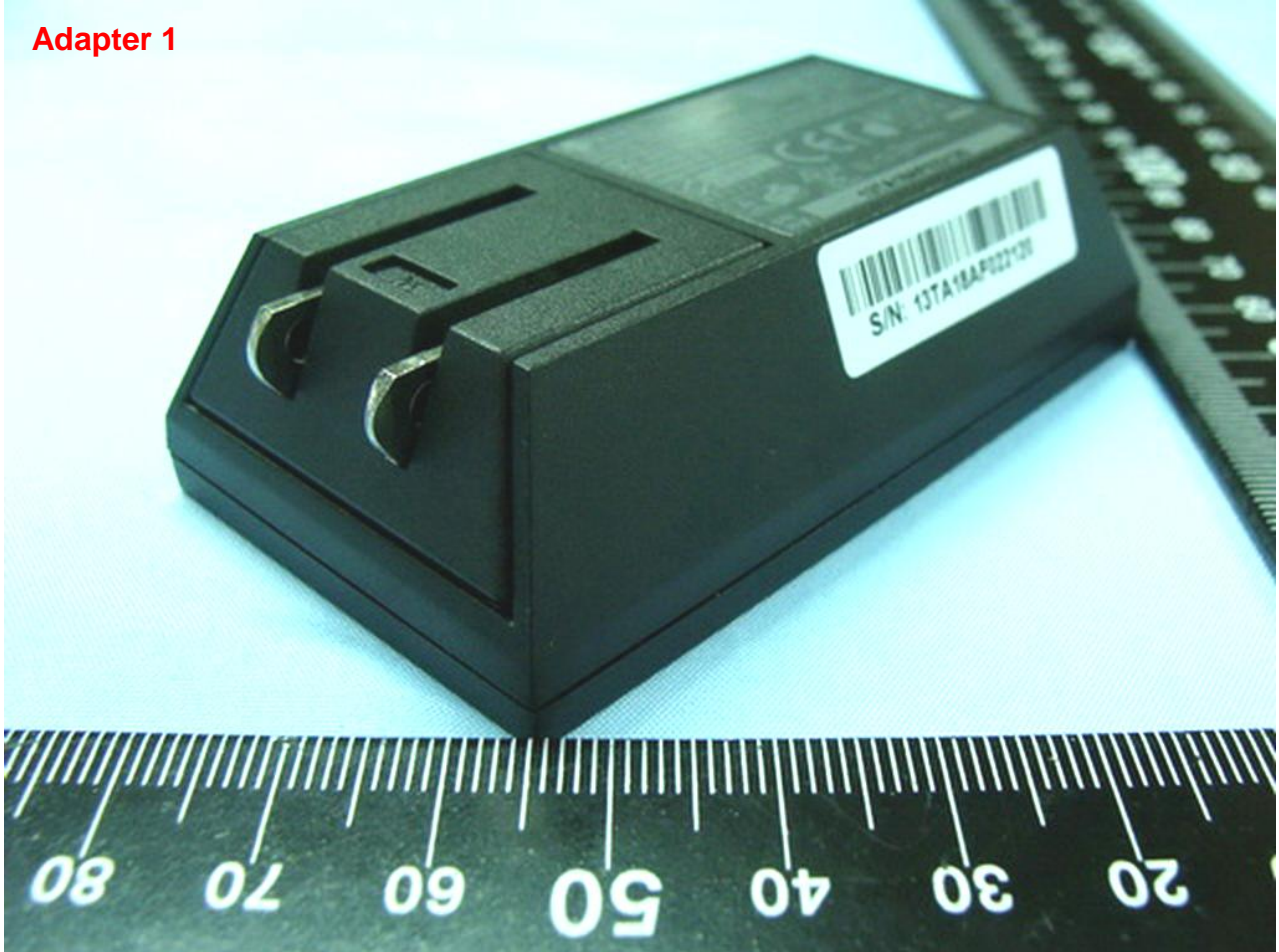
Specification of Accessory		
AC Adapter 1	Manufacturer	Foxlink
	Brand Name	hTC
	Model Name	TCP300
	Power Rating	I/P:100-240Vac, 50-60Hz, 0.2A; O/P: 5Vdc, 1A
AC Adapter 2	Manufacturer	Delta
	Brand Name	hTC
	Model Name	TCP300
	Power Rating	I/P:100-240Vac, 50-60Hz, 0.2A; O/P: 5Vdc, 1A
Battery 1	Manufacturer	TWS
	Brand Name	hTC
	Model Name	TOPA160
	Power Rating	3.7Vdc, 1100mAh, 4.07Whr
	Type	Li-ion
Battery 2	Manufacturer	Welldone
	Brand Name	hTC
	Model Name	TOPA160
	Power Rating	3.7Vdc, 1100mAh, 4.07Whr
	Type	Li-ion
USB Cable 1	Brand Name	ACON
	Model Name	DU U200
	Signal Line Type	1.25 meter shielded cable without ferrite core
USB Cable 2	Brand Name	MEC
	Model Name	DC U200
	Signal Line Type	1.25 meter shielded cable without ferrite core
LCD Panel	Brand Name	AUO
	Model Name	H322VL01
Camera 1	Brand Name	PREMIER
	Model Name	CMHT-5AM00T
Camera 2	Brand Name	LITEON
	Model Name	08PM11

Remark: The above EUT's information was declared by manufacturer. Please refer to the specifications or user's manual for more detailed description.



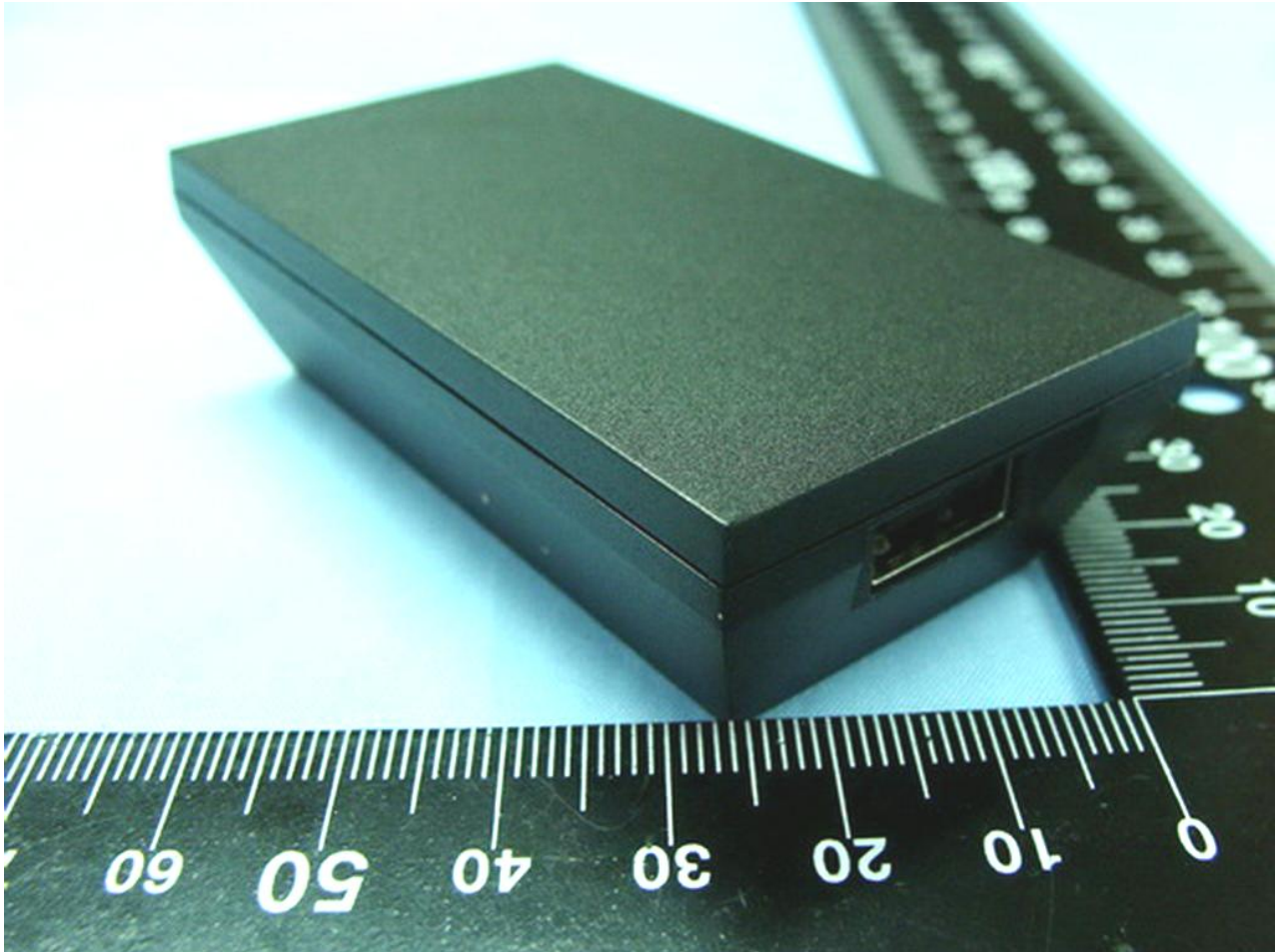
Model Name: TOPA210

Adapter 1





**Model Name: TOPA210**



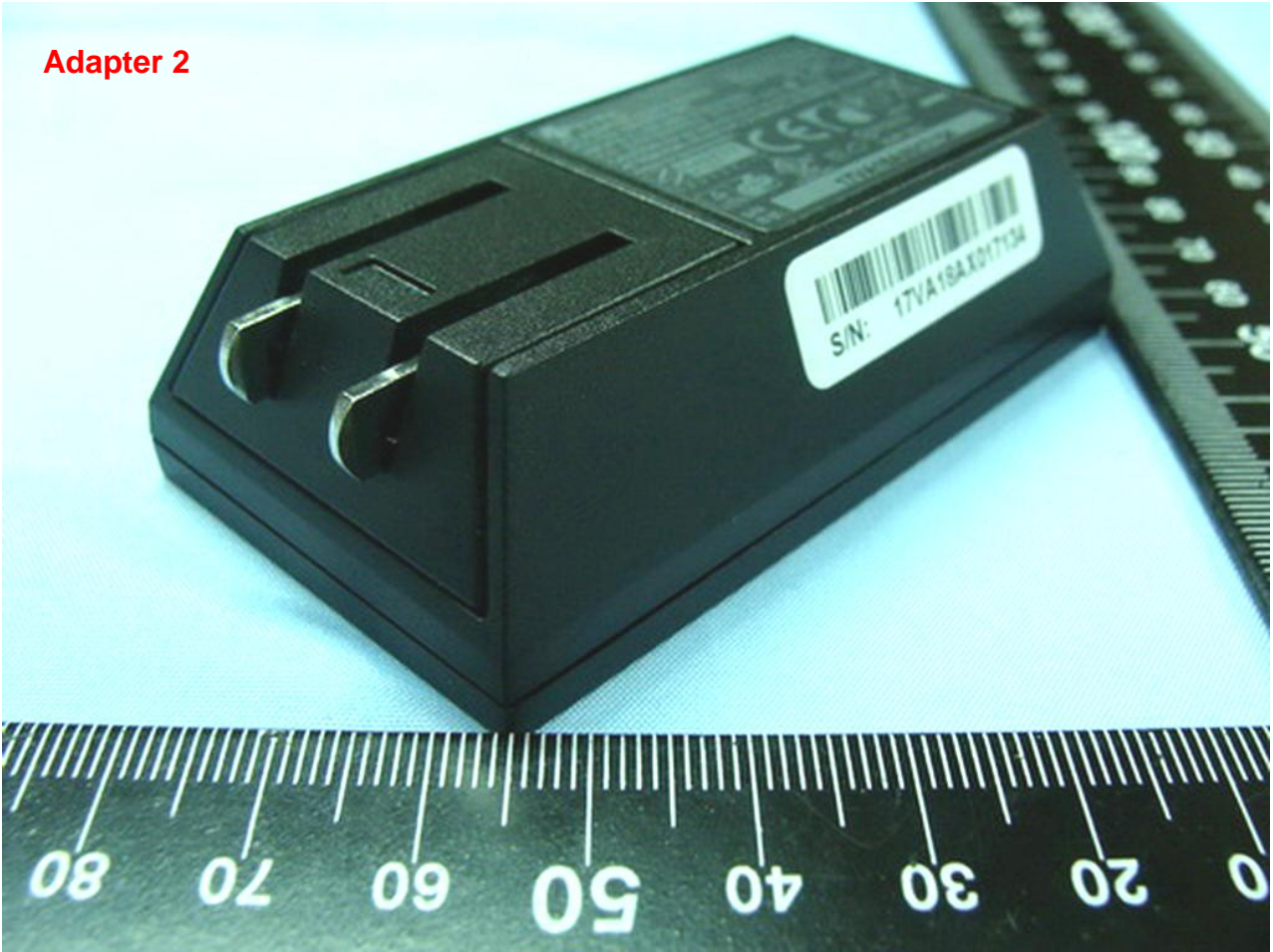
Model Name: TOPA210





Model Name: TOPA210

**Adapter 2**





Model Name: TOPA210



Model Name: TOPA210



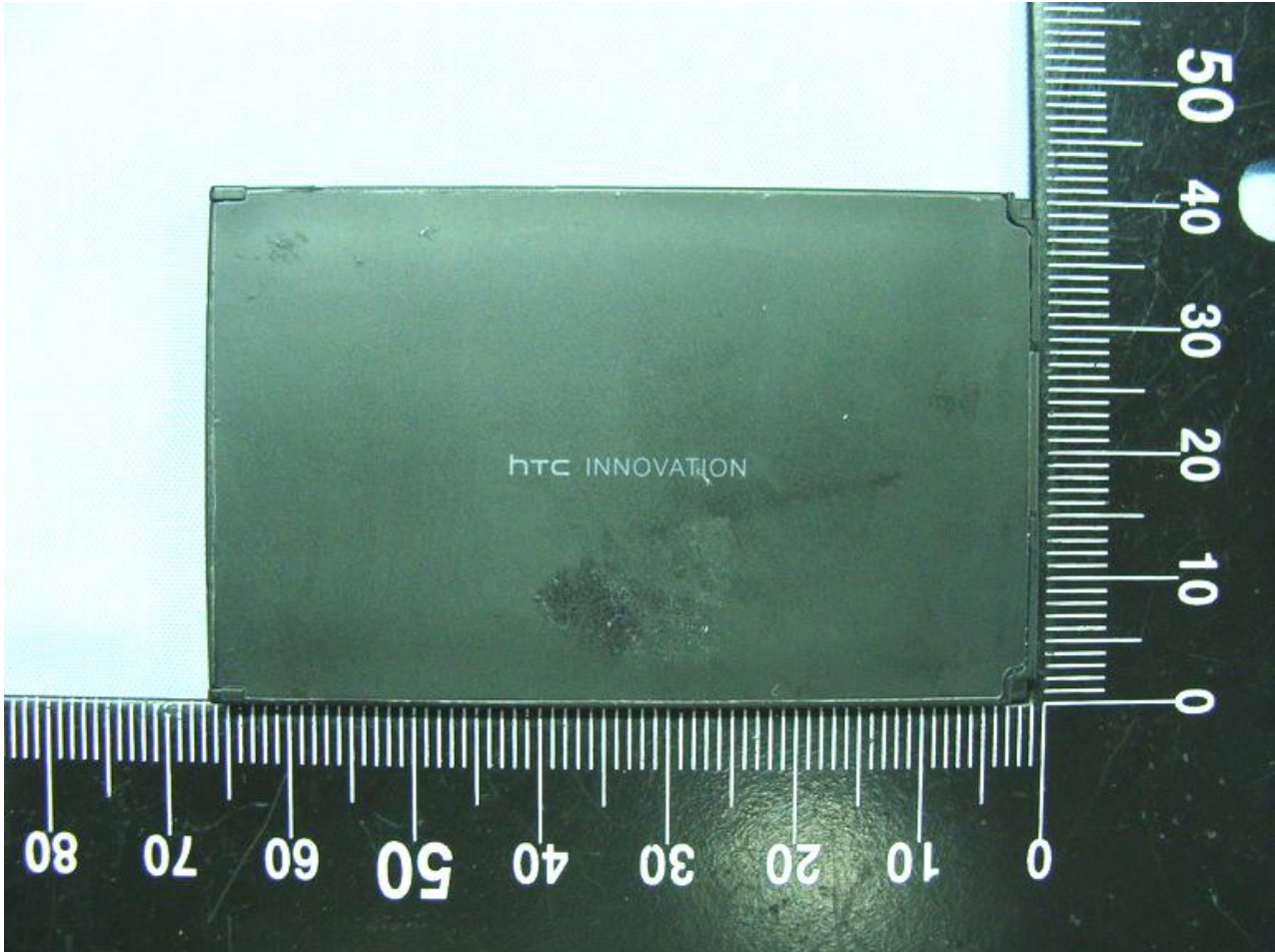
Model Name: TOPA210

Battery 1



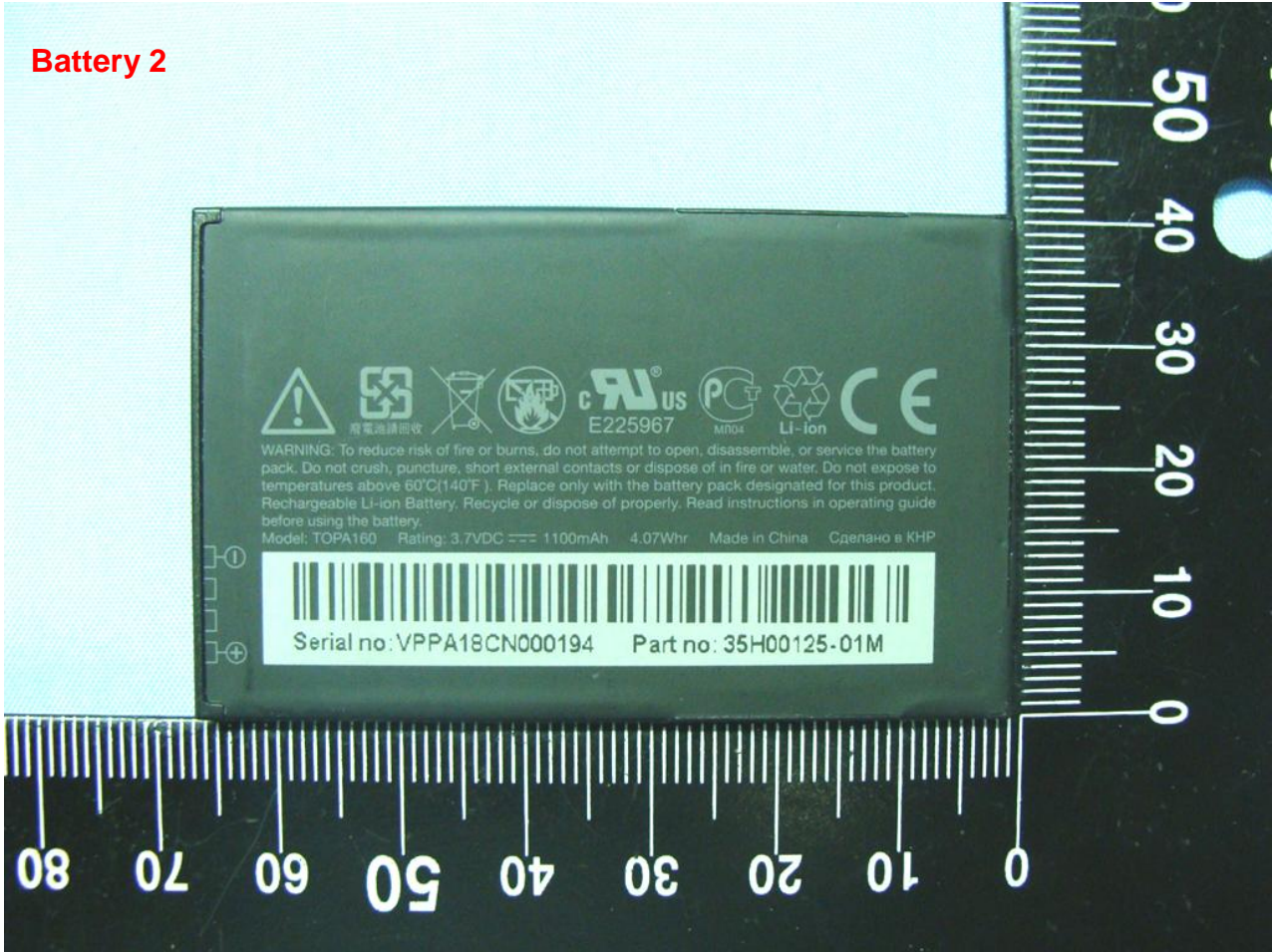


Model Name: TOPA210

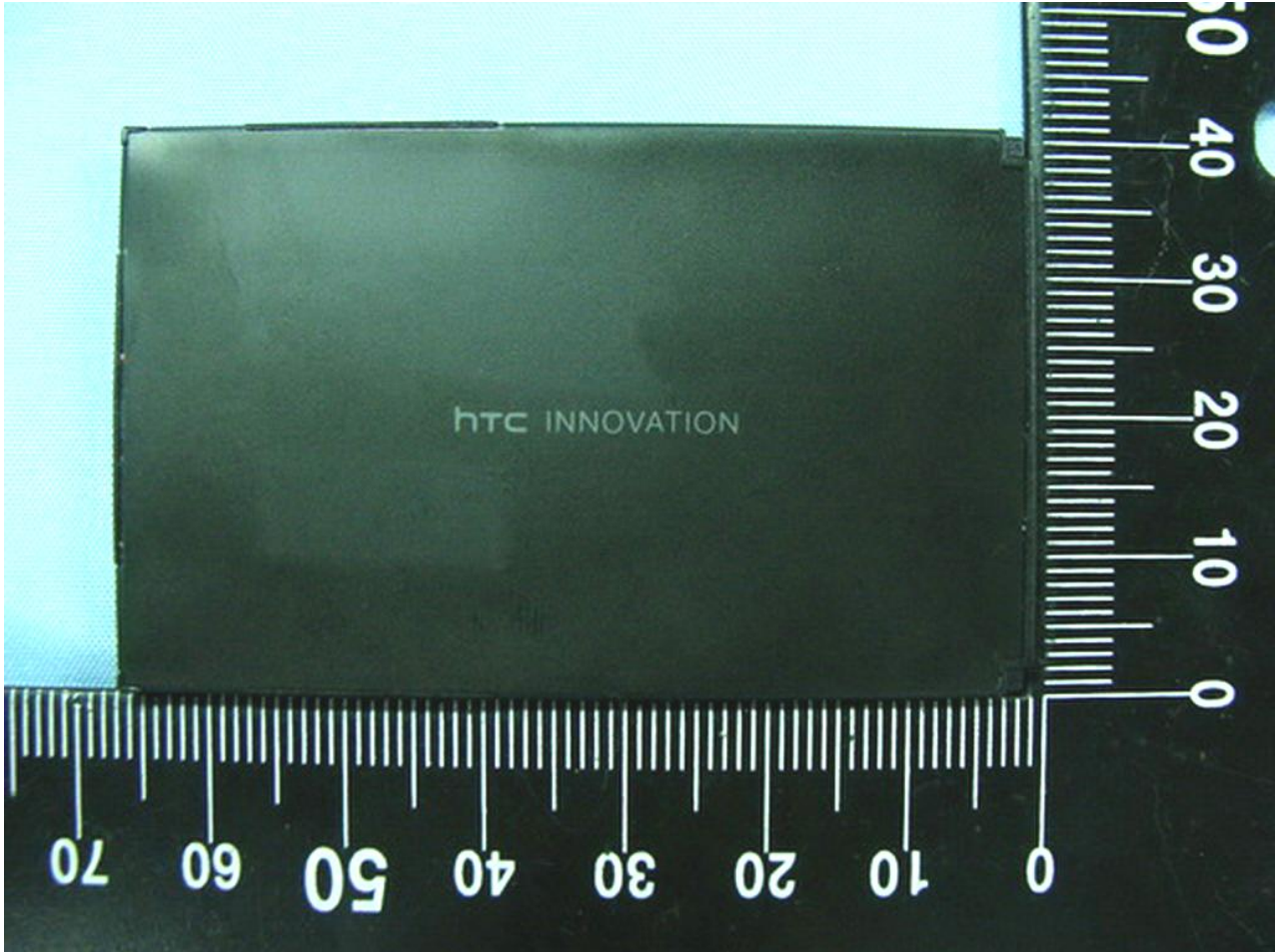


Model Name: TOPA210

Battery 2

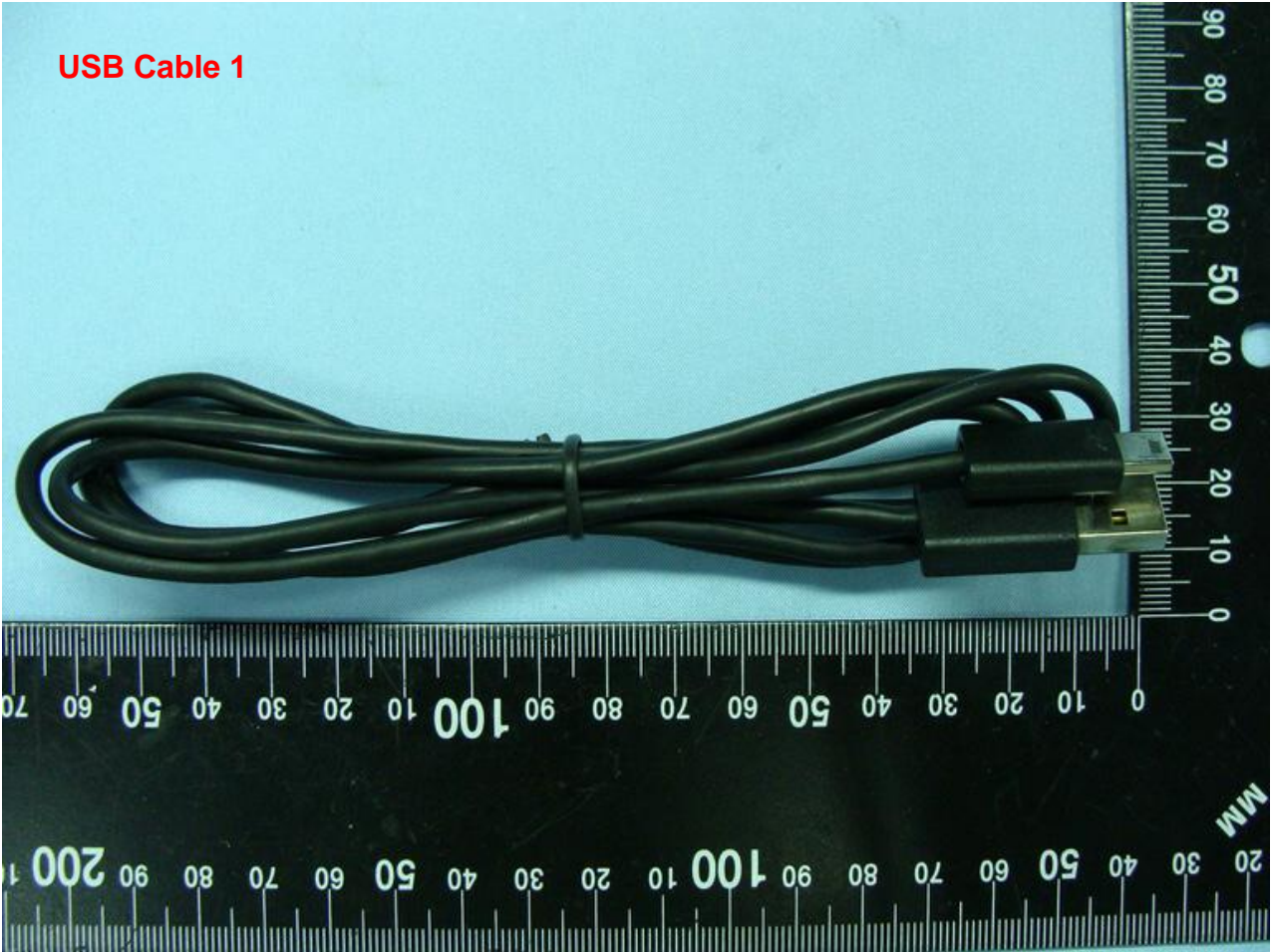


Model Name: TOPA210



Model Name: TOPA210

**USB Cable 1**





Model Name: TOPA210

**USB Cable 2**

