

## Assigning a Photo ID to a Contact

The **Assign Photo** command lets you assign an image file or animated GIF file (“Photo ID”) to an individual Contact entry stored in your Pocket Contacts, or Phonebook entry on the SIM card. You can also specify a size, and a position for the Photo ID.

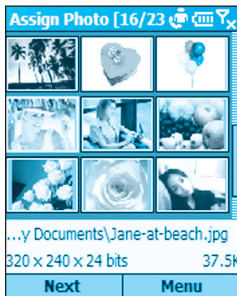
And, to add more fun and a stronger visual impact to your incoming calls, you can assign an animated “template ID,” which will serve as a frame around the image, if desired. Templates are animated GIF files, and are available in both Portrait and Landscape orientation. You can choose to display the Photo ID only, or the Photo ID together with a template ID, and easily change Photo IDs and/or Template IDs at any time. A collection of templates are included in the **\\Storage\My Documents\IA Caller ID Photos** folder of your phone.

NOTE: The steps in this section are for the **Assign Photo** command on the main menu (individual Contact assignment), but this same basic procedure can also be followed when:

- Assigning a Photo ID to a Group (using the **Assign Photo** command on the menu in the *Manage Group* screen)
- Assigning “Unknown Photo,” “Not-found Photo,” and “Default Photo” (using the **Assign Photo** command on the menu in the *Set Default Photos* screen)
- Assigning an individual Photo ID using the **Assign Photo** command on the menu accessed when in *Detailed View*

First, make sure the photo you want to use is either a JPEG, BMP, or GIF file (either still or animated GIF). By default, the **\\Storage\My Documents** folder is searched for these file types. If the file you want to use is located somewhere else, you can optionally search other folders in Step 2 below.

1. In the main *Caller ID* screen, select the desired Contact in the list.
2. Select **Assign Photo** from the menu, or simply press the Left Softkey. The first *Assign Photo* screen will appear. In it, your JPEG, BMP, and GIF files will be displayed as thumbnails.



*Optional:* Or, you can use your phone's camera to take a new picture and then assign it as a Photo ID. Open the menu in this *Assign Photo* screen and select **New from Camera**. This switches to Camera so you can take a new photo. After taking a new photo, you will be returned to Caller ID so you can assign the new photo as a Photo ID.

3. Select the file you want to use as the Photo ID.
4. Press the Left Softkey ("Next"). A *Preview* screen opens.

If **Use Template** is active in the *Display Settings* screen, the photo is previewed in a template when you press “Next.” An example is shown below in the figure on the right. You can use the menu in this *Preview* screen to preview the **Next Template** or **Previous Template**, or press the Right or Left navigational buttons.

If **Use Photo Only** happens to be active in the *Display Settings* screen, the photo alone is previewed with a pre-set sample name and phone number, according to the current Position setting in *Display Settings*. An example is shown on the left below.



- If this *Preview* screen already shows the setup you want, press the Left Softkey (“Done”).

Or, to access various setup options, press the Right Softkey to open the menu.

Select **Display Settings** from the menu if you want to switch to either Photo Only assignment or Use Template assignment. If you choose **Photo Only**, you can specify one of several positions, and a size. If you choose **Use Template**, you can specify the template to be used, and the method for fitting the photo on the *Incoming Call* screen.

You can also open the *Display Settings* screen outside of the “Assign Photo” process by selecting **Options > Display Settings** from the main menu in List View, and you can preview the behavior of any Photo ID assignment by selecting **Preview**.

## 2.4 In-call options

Listed below are all the menu options that might possibly be available when a call is in progress. Some of these options are only available when multiple calls are in progress or during a conference call.

**End** — Disconnect the call.

**Hold** — Place the active call on hold.

**Unhold** — Activate the call on hold.

**Swap** — Switch between two calls.

**Save Contacts** — Create a Contact record for the caller.

**Conference** — Join together all existing calls, if you have subscribed to this service.

**Private** — Break one call out of a conference and makes this call active while the rest of the conference is on hold.

**Speakerphone** — Increase the volume of the earphone.

**Mute** — Mute the microphone for the active call. The other party will not hear anything you say, but you can still hear the other party.

**Unmute** — Turn the microphone back on for the active call.

## 2.5 Retrieving a voice mail message

On the Home screen, press and hold **1** (varies with operator) to call your voice mailbox, and follow the prompts to retrieve your messages.

**NOTE:** This is actually a Speed Dial (see section 2.7). Speed Dial **1** is reserved for voice mail access and the number is configured in your settings.

## 2.6 Reviewing your calls

Using **Call History** and **Call Timers**, you can view information about phone calls that you have made and received. For example, you can see who has called you recently and find out how much time you have spent talking on the phone.

### Call History

Call History displays the last 36 calls that you have made, received, and missed. Each entry in Call History contains the start time of the call, the duration, the caller's name, if available, and the caller's number. The oldest calls are automatically deleted from the list to make room for the newest calls.

To view your Call History, select **Call History** from the Start menu. If desired, you can then filter the list so that only Missed Calls, Incoming Calls, or Outgoing Calls are listed. Simply open the menu in the Call History screen, select **Filter**, and then select the desired category from the submenu.

Other commands on the menu in the *Call History* screen besides **Filter**:

**Find Contact** — Lets you view Contact information related to the selected entry.

**E-mail** — Select the entry in the Call History list to whom you want to send E-mail, then select **E-mail** on the menu. You will be switched to the *Messaging* screen.

**View Timers** — Opens the *Call Timers* screen. See the subsection below for details.

**Delete** — Remove the selected item from the list.

**Delete List** — Remove all items in Call History.

**Save to Contacts** — Create a new Contact entry using the info related to the selected item in Call History.

## Call Timers

Call Timers gives you detailed information regarding the length of your last call, the total number of calls made and received, calls by type (incoming, outgoing, roaming, and data), and a lifetime counter.

Call Timers is useful for keeping track of your calling patterns, for example to determine what type of calling plan you want. It can also help you estimate your monthly billing. You can reset Call Timers to zero (0), for example to start timing calls for a new monthly billing cycle.

To access the Call Timers screen, select **Call History** from the Start menu, then open the menu in the *Call History* screen and select **View Timers**.

## 2.7 Speed Dials and Voice Tags

You can create “Speed Dials” for frequently-called phone numbers by simply pressing and holding one or two keys. You may choose Speed Dial entries from 2-99; Speed Dial 1 is reserved for voice mail access and the number is configured in your settings.

You can create a Speed Dial for a phone number, a program on the Start menu, an E-mail address, or Web page address (URL) that is stored in Contacts.

### Speed Dials

#### Creating a Speed Dial for a phone number:

1. In the Home screen, press the Right Softkey (“Contacts”), or select **Contacts** from the Start menu.
2. Select the desired Contact entry and then press the Action button to access the Contact card. All data entered for that Contact will be listed.
3. Select the phone number for which you want to assign a Speed Dial.
4. Press the Right Softkey to open the menu and select **Add Speed Dial**.
5. In the **Keypad Assignment** field of the *Add Speed Dial* screen, select the number you want to assign as the Speed Dial. Press the Left or Right navigational button to select, or press the Action button to view the full list of choices.
6. Press the Left Softkey (“Done”) to save the new Speed Dial.

**For URLs and E-mail addresses:**

You can also create Speed Dials for URLs (Web addresses) and E-mail addresses that are stored in Contacts. In Step 3 above, just select the desired E-Mail address or URL address (instead of a phone number).

**Making a call using a Speed Dial:**

When in the Home screen, press and hold the number on the keypad that you have assigned as a Speed Dial for a number. If the Speed Dial number consists of two digits, press the first digit and then press and hold the second digit.

**Viewing Speed Dials you have created:**

In the Home screen, select **Speed Dial** from the Start menu. All Speed Dial entries will be listed. In addition, you can use the menu in this screen to perform the following:

**Run** — Invoke the contact method associated with the selected Speed Dial (dials a number, starts Internet Explorer, or invokes Messaging). You can perform this same function by pressing the Left Softkey (“Go”).

**Find Contact** — Open the Contact card associated with the selected Speed Dial.

**Delete** — Delete the selected Speed Dial entry from the list.

**Filter** — Lets you filter the list.



## Voice Tags

You can record a voice tag for a phone number, E-mail address, or Web page address that is stored in your Contacts. Then, when you speak the voice tag, your phone automatically dials the associated phone number, opens an E-mail message using the associated address, or goes to the associated Web page.

### Creating a Voice Tag for a phone number, E-mail address, or URL in your Contacts:

1. In the *Home* screen, press the Right Softkey (“Contacts”), or select **Contacts** from the Start menu.
2. Select the desired Contact entry and then press the Action button to access the Contact card. All data entered for that Contact will be listed.
3. Select the phone number, E-mail address, or Web page address for which you want to assign a Voice Tag.
4. Press the Right Softkey to open the menu and select **Add Voice Tag**.
5. After the message/beep, begin recording the voice tag (preferably one easy-to-recognize word).
6. After the second beep sound, the phone will play back the voice tag. Select “Add Speed Dial.” The phone will play back the voice tag.
7. Press the Left Softkey (“Done”) to save the new voice tag.

To use the voice tag, press and hold the Volume Down button on the left side of the phone for three seconds in the Home screen, to invoke the recording function. Say the word that you recorded as a voice tag. The phone plays back the voice tag and then dials the associated phone number; or opens a new E-mail message; or goes to the associated Web page (whichever you chose prior to creating it in Step 3 above).

## Creating a Voice Tag for an application

You can also associate a voice tag with an application. For example, to build a voice tag for the Calendar application, do as follows:

1. In the Home screen, press the Left Softkey (“Start”), to open the Start menu.
2. In the Start menu, highlight the “Calendar” item in the menu.
3. Press the Right Softkey to open the menu and select **Add Voice Tag**.
4. After the message/beep, say “Calendar.”
5. After the second beep sound, say “Calendar” again. The system will play back the voice tag.
6. Press the Left Softkey (“Done”) to save the new voice tag.

In the future, you can invoke the Calendar application by holding the recording button in the Home screen and then saying “Calendar” after the beep. The system will repeat the voice tag “Calendar” to indicate that it recognized the word, and then will launch Calendar. If the phone misinterprets the word, press the **End** softkey and start over.

## Editing, Deleting, and Playing Voice Tags

Select **Speed Dial** from the Start menu. Select the desired voice tag from the list. Then:

- To change it, select **Edit**, then make changes and select **Done**.
- To delete it, select **Delete** from the menu.
- To play back an existing voice tag at any time, select **Play Voice Tag** from the menu.

## Creating and managing Voice Notes

This feature provides a convenient way for you to create a verbal reminder (in lieu of entering text) by using your phone's built-in audio recorder.

When in the Home screen, select **Voice Notes** from the Start menu, or hold down the Volume Up button for three seconds (on the left side of the phone). The *All Notes* screen will open, and will list all Voice Notes you have previously recorded, if any.

To start recording a new Voice Note, press the Left Softkey ("Record"), or select **Record** from the menu. The recording process begins immediately. A time counter will display on the screen to let you know how much time has elapsed during the current recording.

Speak closely into your phone's microphone, then press the Left Softkey ("Stop") to stop recording. You will be returned to the *All Notes* screen. The new voice file will automatically be saved using a default filenaming convention of "Recording1," "Recording2," etc.

To **Play**, **Rename**, or **Delete** an existing recording, select the desired voice file in the list, then open the menu (Right Softkey) and select the appropriate command.

## 2.8 Advanced dialing information

The following information covers advanced dialing options that may be useful for phone numbers requiring special dialing instructions.

### Inserting an international country code

International calls require a country code to be included in the phone number. A plus sign (+) must appear first, followed by the country code and the rest of the phone number. To enter the plus sign, press and hold **0** until **+** appears.

### Inserting a three-second pause in a dialing sequence

Some international calls require a three-second pause in the dialing sequence in order for the call to process successfully. To insert a pause:

1. In the *Home* screen, select **Contacts** from the Start menu, or press the Right Softkey ("Contacts").
2. Select the Contact entry in whose phone number you want to insert a pause, then press the Action button to access the Contact card for that entry.
3. Press the Left Softkey ("Edit"), or select **Edit** from the menu.
4. In the *Edit* screen, select the specific phone number in which you want to insert the pause. Then press the Left or Right navigational buttons to position the cursor within the number where you want to insert a three-second pause.
5. Open the menu and select **Insert Pause**. The letter "**p**" will appear in the number for your reference, to show where the three-second pause will occur in the dialing sequence.
6. Press the Left Softkey ("Done").

## Inserting a manual pause in a dialing sequence

There may be phone numbers that require a pause longer than three seconds in the dialing sequence. For these cases, you can pause as long as you want, and manually continue the dialing sequence using the **Talk** button.

Follow the same steps outlined above in “Inserting a three-second pause in a dialing sequence,” except in Step 5, select **Insert Wait** from the menu. The letter “**w**” will appear in the number for your reference, to show where the indefinite pause will occur in the dialing sequence. Don’t forget that when you call a number containing a “manual pause,” you will need to press the **Talk** button to continue dialing.





## 3.1 Camera mode

When in **Photo** capture mode, you can capture standard still images. In **Picture Theme** capture mode, you can place your captured images into attractive frames (templates). Use **Photo ID** capture mode to capture an image that you want to assign to one of your Contacts as a Photo ID. Or, switch to **Video** or **MMS Video** capture mode and capture “live” video streams (with audio if desired), then share them with others. You can even send the captured files via E-mail or MMS.

### Invoking Camera mode

Use any of these methods to switch to Camera mode on your phone:

- Press the hardware button on the right side of the device.
- Select **Camera** or **Camcorder** from the Start Menu, or select **Album** and then press the Left Softkey (**Camera**).
- If already invoked recently, you can select the appropriate icon in the “recently used programs” bar at the top of the Home screen:

### Choosing a Capture submode

When in Camera mode, select **Capture Mode** from the main menu, and then select either **Photo**, **Video**, **MMS Video**, **Photo ID**, or **Picture Theme** from the submenu.



## Capturing a still image

Select **Camera** from the Start Menu to go directly to Photo capture mode. If already in a different capture mode, open the menu and select **Photo** from the **Capture Mode** sub-menu, or press **1** on the keypad to switch to different capture submodes.

The current capture size (Resolution) dimensions are shown near the top of the screen. Press **2** on your keypad to select the Resolution (640 x 480, 320 x 240, or 160 x 120). Press the Up button if you want to Zoom In, or the Down button to Zoom back out. Near the bottom of the screen, the current Zoom ratio is shown. (The size of the Preview window, shown in the example below, is fixed at 176 x 144 pixels.)

Besides specifying a capture size, you can also specify the destination storage media for saved files, rename them after capturing them, and an output quality (the output format for image capture is JPEG). The number of images you can still capture, according to available memory and your current settings, is always displayed.

To capture the image, press the hardware Camera button on the right side of the phone, or the Left Softkey (“Capture”), or the Action button.



## Capturing a video using Video mode

Select **Camcorder** from the Start Menu to go directly to Video capture mode. If already in a different capture mode, open the menu and select **Video** from the **Capture Mode** submenu, or press **1** on your phone keypad to switch to different modes.

The Capture Size dimensions are shown near the top of the screen. Press **2** on your keypad to select the size (176 x 144, or 128 x 96). Press the Up button if you want to Zoom In, or the Down button to Zoom back out.

To specify the output format, select **Options** from the menu and then **Modes**. In the Encoder field, select either **MPEG4**, **H.263**, or **Motion-JPEG AVI**. Also in this screen, you can set a limit to the video file size, if desired.

Select **Options > Video** to specify whether or not to capture audio to accompany the video clip, and to change the default filenames convention if desired. As a shortcut, you can press the **6** button on your phone keypad to toggle audio-capture capability On and Off. An icon resembling a microphone in the lower left of the Video Capture screen indicates whether audio capture is enabled or disabled. When Off, a diagonal line is drawn through the icon.

The amount of time available for your next video capture, according to available memory and your current settings, is always displayed.

To begin capturing a video clip, press the hardware Camera button on the right side of the phone, or the Left Softkey ("Capture"), or the Action button. Press any of them again to stop recording. If a limit has been set for the video file size, recording will stop automatically when the limit is reached.

## Capturing a video using MMS Video mode

The usage and options for MMS Video capture mode are the same as for Video capture mode, except for the following:

Whereas the Video capture mode allows you to set any file size limitation, MMS Video mode is permanently set to a file size limitation of 95 KB. When the video currently being recorded reaches a file size of 95 KB, the recording process will automatically be stopped.

In addition, when in MMS Video mode, there are only two choices for Encoder type: MPEG-4, and H.263. Typically, it is recommended that you use H.263 for video files to be sent as MMS attachments.

## Using Photo ID mode

The **Photo ID** capture mode captures a still image in the same way as Photo capture mode, but captures at a size (176 x 180) which is convenient to use directly as a Photo ID for one of your contacts. Immediately after capturing an image using Photo ID capture mode, you can select **Save As > Caller ID Photo** from the menu in the Review screen (shown later in the section entitled *The Review screen*) to invoke the Caller ID (Photo Contacts) application.

In Caller ID, all entries in your Pocket Contacts will be listed. Select the Contact to which you want to assign the image you just captured. Then press the Left Softkey ("Next") and then again ("Done") to assign the photo. After that, you will be returned to the Capture screen of Capture mode automatically.

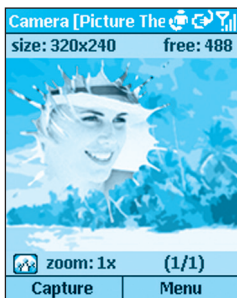
## Using Picture Theme mode to frame your captured photos

The Picture Theme capture mode lets you place your captured images into selected frames.

When in Camera mode, select **Capture Mode > Picture Theme** from the menu, or press **1** on your keypad until Picture Theme is the active capture mode.

When you switch to Picture Theme, one of your templates in the **\My Documents\Frames** folder will be loaded. To load a different template, press the Left or Right navigational buttons; or select **Select Template** from the menu to browse and preview each template. The filename, dimensions, and number of images required for that template will be displayed in the *Select Template* screen, as shown below on the left.

The figure on the right below shows the Picture Theme capture mode, ready to capture an image. The incoming video stream is previewed in the “place holder” where the captured image will be placed. (In templates that require two or more images, the focus switches to another “place holder” after the first one is filled.)



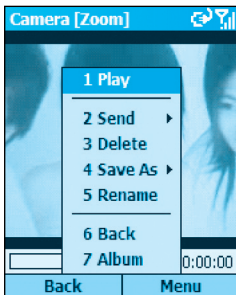
To capture an image, press the hardware Camera button on the right side of the phone, the Left Softkey (“Capture”), or the Action button. The image will be saved with the frame.

Zoom capability is determined by the currently loaded template, as shown later in the table in the “Zooming in and out” section.

## The Review screen

If the **Review after capture** checkbox is checked in the **Options > General** screen (it is checked by default), a *Review* screen will appear immediately after you have captured a file using any of the five capture submodes.

In the example below, a video file has just been captured, so the first frame of the video file is shown in the *Review* screen.



The menu in the *Review* screen lets you:

- **Play** the video. A Progress Bar at the bottom of the screen will indicate progress of the playback. (Note that the **Play** command is available on this menu only if the captured file is a video file.)
- **Send** it immediately (via E-mail, or via MMS if you have it).
- **Delete** it if you decide you don't want to keep it.
- Switch to the *Caller ID* application (if you have it) and **Save As** a Photo ID for a Contact entry, as explained earlier.
- Keep and **Rename** it.
- Keep it with its automatically assigned filename, and go **Back** to the Capture screen, ready to do more captures.
- Switch to the Thumbnail View of **Album** mode.

In the previous figure (Review Mode screen), the Title Bar indicates **Zoom** mode. You can press the Up and Down buttons to Zoom In and Out.

Or, press the Action button to switch to **Pan** mode. If the image is too large to fit in the display area, you can press the Up, Down, Left, or Right buttons to pan the image to the desired position.

## Zooming in and out

When in one of the five capture modes, you can press the Up/Down button to Zoom In/Out. However, Zoom capability depends on the current Capture Mode, Encoder type, and Resolution (Capture Size), all of which can be specified in the **Options > Mode** screen.

Another way to zoom is to select **Zoom** on the menu.

Capture mode	Capture Size setting	Zoom available
Photo	160 x 120	1x, 2x, 4x
	320 x 240	1x, 2x
	640 x 480	None
Photo ID	176 x 180	1x, 2x
Picture Theme	Depends on the size of the currently loaded template. Examples:	
	160 x 120 template	1x, 2x, 4x
	320 x 240 template	1x, 2x
	640 x 480 template	None
	800 x 480 template	None
Video and MMS Video	128 x 96	1x, 2x
	176 x 144	1x, 2x

NOTE: “1x” indicates normal (unzoomed) size.

## Adjusting for various lighting conditions

From the main menu, select **Ambience**. The Ambience submenu lets you easily adjust the Capture screen so that it looks its best in various environments. **Auto** is the default setting, which means it will automatically adjust to different lighting conditions. You can optionally select **Daylight**, **Incandescent**, **Fluorescent**, or **Night**.

Or, you can affect the color display of the incoming video stream by selecting **Grayscale** (black and white), **Sepia** (light orange hue) or **Cool** (blue tint).

## Adjusting Camera Properties

In addition, you can select **Adjust View** from the Ambience submenu if you wish to make adjustments to various Camera Properties of the sensor output. After the *Adjust View* screen opens, you can press the Up or Down button to change the Property (either **Gamma**, **Brightness**, **Saturation**, or **Hue**), then press the Right or Left button to change the value of the current Camera Property. If you wish to reset the Camera Properties to their original default settings, simply open the menu in the *Adjust View* screen and select **Restore Default**.

## Setting various Options

After you select **Options** from the menu, you can enter different screens to customize various behaviors of Camera mode, as follows:

### General

In the *General* screen, you can:

- Specify the storage media to which newly-captured files are saved: Mini SD card, or Internal Memory (\Storage\My Documents).



- Set the Flicker Adjustment according to the electrical voltage used in your country.
- Enable Review mode, so that every time you capture any new image or video file, you will enter the Review screen (shown and explained earlier). It is enabled by default.
- Disable the audible “shutter” sound so that images will be captured silently.

### Counter

By default, sequential numbers are incorporated into the file-name of each new image or video you capture. This screen lets you re-set the counters individually to 001.

### Photo

All still images you capture are saved in the JPEG format. In the *Photo* screen, you can specify a JPEG quality (Basic, Normal, Fine, Superfine), and you can change the default filename prefix if desired.

The location you specify in the Template Folder field is where Camera will look for templates when you enter Picture Theme mode. You can choose **Storage Card** or **Internal Memory**. If Internal Memory is chosen, Camera will look in the **\Storage\My Documents\Frames** folder of your phone, where a collection of template files is located. Likewise, if Storage Card is chosen, it will look in **\My Documents\Frames** of the Storage Card.

### Video

By default, all video clips you capture will have accompanying audio recorded along with the video. In this screen, you can disable or re-enable the recording of audio along with your video files. (Or, when in a Capture screen, you can simply press **6** on your phone keypad to toggle audio capture On and Off.) You can also change the default filename prefix which is used for each new video capture.

## Modes

The fields available in the *Modes* screen will vary depending on the Capture Mode and Encoder type selected. (The “Encoder” is the output format of newly-captured files.)

If **Photo** is the selected Capture Mode, you can choose the desired Resolution (capture size). They are all listed in the table in the “Zooming In and Out” section.

If **Video** is the selected Capture Mode, you can use the Encoder field to specify what file format to record in, and a desired Resolution. In addition, you can set a maximum limit to the file size. For example, if you enter 600 KB in the Limit Video File Size field, then recording will automatically stop when that file size is reached.

If **MMS Video** is the selected Capture Mode, the “Limit Video File Size” field is not available. This is because the maximum file size is set to 95 KB for MMS Video captures. Encoder types available are MPEG-4 and H.263.

There are no changeable options available in the *Modes* screen when **Picture Theme** or **Photo ID** is the selected Capture Mode.

NOTE: Another way to enter the *Modes* screen is to select **Menu > Capture Modes > Manage**.

## Switching to Album Mode to view and manage your images/videos

- Select **Album** from the menu when in a Capture mode or in Review mode.
- Press the \* key or the # key on your phone when in a Capture mode.

## 3.2 Album mode

The Album mode of Camera allows you to view the image and video files you have captured, as well as audio files and images/videos you have obtained from other sources such as E-mail, a mini SD card, infrared beaming, or synchronized from a PC.

You can manipulate and organize the files into “albums” and slide shows with fancy transition effects. View images as thumbnails in various sizes, or in an enlarged view. You can zoom in/out, flip horizontally or vertically, rotate, sort, associate files, and more. In addition, if you connect to a server with media content via the Internet, Album can play the streaming media.

Supported File Formats	
Still-image formats	JPEG (.jpg, .jpeg, .jpe); GIF (.gif, .giff); Bitmap files (.bmp, .2bp, .wbmp, .wbm)
Animation format	Animated GIF
Video format	Motion-JPEG AVI (.avi) MPEG-4 Simple profile (.mp4) 3GPP – H.263 baseline (.3gp)
Audio formats	MPEG-4 AAC (Advanced Audio Coding) in .MP4 format WAV MIDI (standard MIDI type 0, 1, and SP-MIDI)

Note that some file types, although not supported by Album, will still be represented as icons in Thumbnail View, such as WMA, WMV, and MP3. For example, MP3 files will be represented as Windows Media Player icons in Album, and selecting the icon will invoke Media Player to play the file.

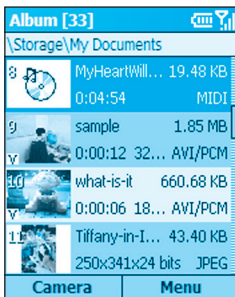
## Thumbnail view mode

Camera searches for the supported image, video, and audio files in your \My Documents folder. You can use the **Change Folder** command to search other folders if desired. Select **Scan Subfolder Files** in **Options > General** if you also want the subfolders of the parent folder to be searched.

Shown below on the left is Large thumbnail size. An example of List View is shown on the right. Use the **Options > Thumbnail** screen to change to other thumbnail views such as Normal, Small, or Portrait. You can also opt to show an index number and an “info bar” which displays data about the selected thumbnail (shown on the left below).



Large thumbnails with Info Bar



List View

To play a video file or audio file, or to view a still image in an enlarged view, select the related thumbnail and then press the **Action** button to switch to Detailed View.

## Detailed View mode

Detailed View mode utilizes more of the screen to display still images or to play back video, animated GIF, or audio files.

Press the Left or Right navigational button to display the previous or next file. Press the Up or Down button to Zoom In or Out. If too large to fit in the display area, press the Action button to switch to Pan mode. You can then press Up/Down/Left/Right to pan the desired portion into view.

The figure below shows a video file during playback. The Title Bar shows us that this file is indexed as #1 and Pan mode is active.



A progress bar and time counter near the bottom of this screen indicate that 12 seconds have played thus far, and the file format is H.263 video with AMR audio track.

If you wish to view files in Full Screen mode, select **View > Full Screen** from the menu, or press the **6** button on your keypad to toggle between Detailed View and Full Screen. Press **7** to play/pause, or **8** to mute/unmute audio play.

Press **\*** for **Actual Size**, or **#** for a **Fit-in-window** display.

## Slide Show view mode

First, in Thumbnail View mode, select the thumbnail that you want to appear initially in the slide show. Then select **Slide Show** from the menu. The slide show will then begin with the currently selected file.

Or, as a shortcut, you can press **0** when in either Thumbnail View or Detailed View to start a slide show. Each image, video, and audio file in the current folder will be played using the full screen, according to the settings that have been specified in the Slide Show Options screen.

The Slide Show Options screen can be accessed by either selecting **Slide Show Options** from the menu during Slide Show view mode, or by selecting **Options > Slide Show** from the menu when in Thumbnail View mode. The options are summarized in the next section.

During a slide show, pressing **6** will also toggle the display of the Title Bar and Softkey Labels on and off; or, select **Full Screen** from the menu. Even if the Softkey labels are not displayed, you can still press the Right Softkey to open the menu, or the Left Softkey to end the slide show. You can also end a slide show by selecting **End Show** from the menu, or by pressing the \* button or your phone's *Back* button.

To pause a slide show, press the Action button. When ready to continue playing the slide show, press the Action button again.

During a slide show, you can press the Left and Right navigational buttons to traverse to the previous or next slide.

To choose the type and speed of transition effects to be used during a slide show, select **Transition Effects** from the menu when in Slide Show view. Or, when in Thumbnail view, you can select **Options > Transition Effects** from the menu.

## Summary of Options screens

Select **Options** from the menu when in Thumbnail view to access the following screens:

### General

The options in this screen let you choose whether or not to:

- Search subfolders of the current folder for files of the supported types.
- Show the images in ROM in the Album screen.
- Force backlight and power to remain on during video and audio playback.
- Mute audio while playing video files.
- Automatically replay video, audio, and animated GIF files.
- Show or hide the Progress Bar during playback in Detailed View.
- Automatically rotate left, right, or never.

### Slide Show

In this screen you can specify:

- The amount of time each file will display during the slide show.
- A rule for slide rotation during slide shows.
- The order of slide play (forward, backward, or random).
- Whether or not to force the backlight and system power to stay on during a slide show.
- Whether or not you want each slide show to start in Full Screen view (Title Bar and Softkey labels are hidden).

## Transition Effects

Select from dozens of transition effects to be used between slides during a slide show, and specify the speed. This screen also lets you preview each choice before selecting it.

## Sort By

Lets you sort the sequence of the files in the current folder according to Name, Date, Size, or Type. Then specify Ascending or Descending order.

## Thumbnail

Choose the size for the thumbnails displayed in Thumbnail mode: Small, Normal, Large, Portrait, or List view. In addition, you can optionally show an index number in the upper left corner of each thumbnail; and an “Info Bar” in which data about the selected file is displayed.

## Association

Choose the filetypes you want to associate with Album. Then, whenever you select a file of that type, it will automatically be opened in Album (Bitmap, JPEG, GIF, AVI, MPEG4, MIDI, and WAV).

## Network

The values in the two **UDP Port Range** fields refer to the range of protocol used to transfer data through the Internet. These should already be assigned to the optimal values by your operator, and normally will not need to be changed. Specify the network to be used in the **Connect Via** field.



## Summary of Menu Functions

Some of the functions that the menus in Thumbnail View and Detailed View allow you to perform:

- Send the selected file via MMS or E-mail.
- Delete the selected file.
- Save As a Caller ID Photo.
- Save As RingTone Line 1 or Line 2 (if a MIDI file is selected).
- Rename the selected file.
- View Properties of the selected file (such as name, folder, date, size, type, colors, frames, dimensions, resolution, audio type, channel, etc.).
- View the current file in Full Screen (Title Bar and Softkey labels are hidden).
- Rotate an image 90 degrees clockwise.
- Change to another folder and display files of the supported filetypes in that folder, including sub-options to switch to \My Documents on your SD card, jump up one level, or select recently visited folders.
- The New command in Thumbnail view includes a sub-option to invoke the voice recorder function of your phone and record a Voice Note.
- Switch to Camera mode.

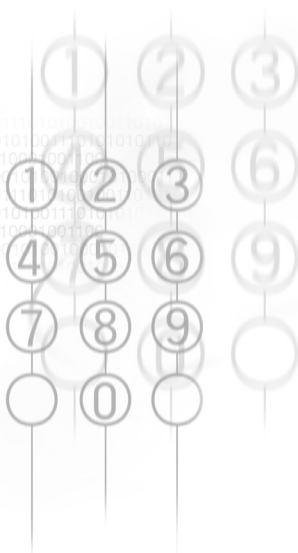


# Chapter 4

---

## Personalizing your phone

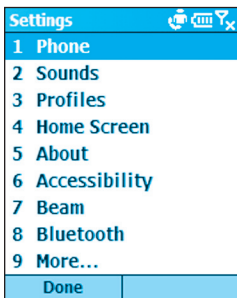
### 4.1 Customizing phone settings



## 4.1 Customizing phone settings

You can easily view and change various settings in your phone. For example, you can use your own sounds for ring tones, use your favorite photo for the *Home* screen background, set up Call Forwarding to manage your calls more efficiently, and more.

In the *Home* screen, select **Settings** from the Start menu. The items in the *Settings* screen are illustrated below.



### Phone

When you select **Phone** in the *Settings* screen shown above, the *Phone* screen appears and offers the following options:

#### Call Barring

Enables you to block incoming and/or outgoing calls.

#### Call Forwarding

Enables you to forward calls to another number.

**Call Options**

Specify your Voice Mail number, SMS Service Center number, Country code, and Area code. If you check the **Any key answer** checkbox, you will be able to answer incoming calls by pressing any key. If **Show SIM Contacts** is checked, entries on the SIM card will be displayed in your Contacts list.

**Call Waiting**

Turn the Call Waiting function on or off.

**Caller ID**

Let your identification be known to all callers; to only the people in your contacts; or to no callers.

**Channels**

Configure cell broadcast.

**Fixed Dialing**

Limit your calling area to one or more specific phone numbers and/or area codes.

**Networks**

Identifies your current network, and allows you to change your network selection from Automatic to Manual. In addition, the menu in the *Networks* screen lets you find a new network, select a network, and list preferred networks.

## Sounds

Sounds settings are used to customize the sounds for ring tones, notifications, and reminders.

Select **Settings** from the Start menu, then select **Sounds** in the *Settings* screen. The *Sounds* screen will open, in which you can specify what sound file to use for the following functions:

- Ring tone
- Reminders
- New E-mail arrival
- New text message arrival
- New voice message arrival
- New instant message arrival
- New channel message arrival
- Alarm clock
- SIM toolkit messages
- Exclamation
- Question
- Warnings
- Keypad control

After selecting one of the fields above, you can press the Right or Left navigational buttons to select different sounds. Or, press the Action button to open the *Select an Item* screen to view the entire list of sounds available for that field, and select from that screen.

You can use the menu in the *Sounds* screen to **Play** or **Delete** the selected item.

Press the Left Softkey ("Done") to save all changes.

### To use your own sound:

1. Go to where your sound file is stored on your desktop computer and copy the file.
2. In ActiveSync on your desktop computer, click **Explore**, go to **\Storage\Application Data\Sounds**, then paste the sound file into the **Sounds** folder.
3. In the Home screen on your phone, select **Settings > Sounds** from the Start menu.
4. Select the desired category (such as Ringtone, Reminders, New E-mail, etc.), specify a sound, then press the Left Softkey ("Done").

## Profiles

Profile settings are used to configure how your phone notifies you of events such as an incoming call, an approaching appointment, or an arriving message. For example, when you are attending a meeting, you can choose the *Meeting* profile, which lowers the ring of your phone and notifies you of incoming calls via vibration. Each profile is pre-defined to use either an audible ring notification, or a vibration notification, with different alarm types, volumes, etc., as shown on the next page.

On the Start menu, select **Settings > Profiles**. Select the desired profile, then press the Left Softkey ("Done").

You can also select a different profile using the Quick List. To display the Quick List screen, press the Power button on your phone and release quickly. Scroll to the desired profile and then press the Action button to select it.

The following table lists the profiles that come with your phone, and their default attributes.

Profile Name	Ring Type	Ring Volume	Alarm Type	Alarm Volume	Notification Type	Notification Volume	System Sound Volume
Normal	Ring	3	Increasing	3	Play sound	3	3
Silent	Vibrate	Off	Vibrate	Off	Vibrate	Off	Off
Meeting	Vibrate	1	Play sound	1	Play sound	1	Off
Outdoor	Ring	Loud	Increasing	Loud	Play sound	Loud	Loud
Automatic	(Toggles between the Normal profile and the Meeting profile, based on your Calendar)						
Headset	Ring	3	Increasing	3	Play sound	3	3
Car	Ring	4	Increasing	4	Play sound	4	4
Speaker phone	Ring	Loud	Increasing	Loud	Play sound	Loud	Loud

To edit a profile's default attributes, select the desired profile in the Profiles screen, then select **Edit** from the menu. If you later want to restore the settings back to the default attributes, select **Reset to default** from the menu.



## Home screen

Home screen settings are used to change the *Home* screen layout, the color scheme, the background image, and the time delay before the *Home* screen appears when your phone is idle.

To view or change these settings, open the Start menu, then select **Settings > Home Screen**.

Note that the images available for selection in the **Background Image** field are those currently in the **\Storage\My Documents** folder of your phone. (If the image file you want to use is not there, copy the file to **\Storage \My Documents**.)

## About

Select **Settings > About** from the Start menu to open the *About* screen, which displays information about your phone's operating system such as version numbers, copy-right information, total/available storage, and total/available memory.

## Accessibility

Select **Settings > Accessibility** to view or modify your settings for System Font Size, Multipress Time-out, Confirmation Time-out, and In-call Alert Volume.

## Beam

If you want to receive infrared or Bluetooth beams from other devices, you must turn on the option to receive incoming beams.

### To receive incoming beams:

1. Select **Settings > Beam** from the Start menu.
2. Select **Receive incoming beams**. The phone will receive all incoming beams from other devices until you clear this option.

## Bluetooth

Please see the next chapter for usage of this setting.

## Certificates

On your phone you can add and delete public key certificates. These certificates help establish your identity when you log on to a secure network, such as a corporate network. Certificates also help establish the identity of other computers, such as servers, with which you connect. This helps prevent unauthorized users from accessing your device and its information.

You can store two types of certificates on your phone: **personal** certificates that establish your identity, and **root** certificates that establish the identity of servers with which you connect. Your phone may include a set of pre-installed certificates.

**Certificates that establish your identity:**

Select **Settings > Certificates > Personal**, then select **View** from the menu to view the selected certificate, or **Delete** to delete it.

**Certificates that identify servers you've connected to:**

Select **Settings > Certificates > Root**, then select **View** from the menu to view the selected certificate, or **Delete** to delete it.

## Data Connections

Please see the next chapter for usage of this setting.

## Date and Time

Select **Settings > Date and Time** to change your local time zone, the current date and time, set the alarm time, and turn the alarm feature on or off.

## Owner Information

Select **Settings > Owner Information** from the Start menu to enter your personal information such as name, phone number, and E-mail address. This is helpful, for example, in the event that you lose your phone so that you can be contacted if it is found. In the *Owner Information* screen, there is also a *Notes* field in which you can enter any other miscellaneous information if desired.

## Power Management

Select **Settings > Power Management** from the Start menu if you want to check the current battery level. Also in the *Power Management* screen, you can adjust various power-saving settings. Backlight time-out, Display time-out, and Light Sensor enabled or disabled.

NOTE: You can also view the Battery Level in the form of a percentage, using the File Manager application described in Chapter 8. (Select **System Info** from the menu in File Manager.)

## Regional Settings

In the *Regional Settings* screen, (**Settings > Regional Settings**), you can change the language used by your phone. After changing the language and some of the other settings, you must power the phone off and back on in order to make the changes take effect. The following items can be adjusted: Language, Locale, Short Date style, Long Date style; and the format of Time, Positive numbers, Negative numbers, Positive currency amounts, and Negative currency amounts.

# Chapter 5

---

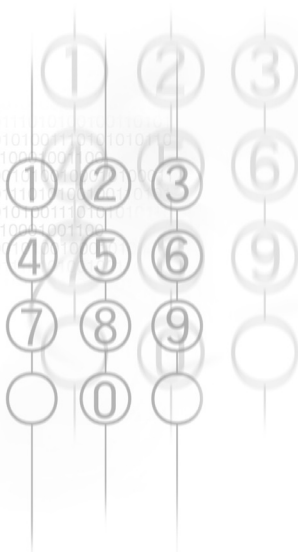
## Getting Connected

**5.1 Connecting to the Internet**

**5.2 Pocket Internet Explorer**

**5.3 Bluetooth**

**5.4 Modem Link**



## 5.1 Connecting to the Internet

When in the Home screen, select **Settings > Data Connections** to access the *Data Connections* screen. The settings in this screen enable you to set up Dial-up, Virtual Private Network (VPN), Proxy, and General Packet Radio Service (GPRS) connections so you can connect to the Internet or your corporate network.

With a data connection, you can browse the Web, download E-mail, chat using MSN Messenger, or synchronize wirelessly with the server. Check with your service provider to see if a data connection has already been set up for you, and if over-the-air configuration is supported.

### Dial-up Connections

You need to set up a dial-up connection to connect directly to the Internet or to your corporate network.

#### To create a dial-up connection to the Internet:

1. When in the *Home* screen, select **Settings > Data Connections**.
2. Press the Right Softkey to open the menu in the *Data Connections* screen and select **Edit Connections**.
3. Select **Dial-up Connections** in the *Connections* screen.
4. In the *Dial-up Connections* screen, select **Add** from the menu.
5. In the *Add Dialup* screen, enter a name for the connection in the **Description** field.
6. In the **Connects to** field, select **The Internet**.
7. Enter the appropriate information for the remaining fields, and press the **Done** softkey.

### To create a dial-up connection to your corporate network:

1. When in the Home screen, select **Settings > Data Connections**.
2. Press the Right Softkey to open the menu in the *Data Connections* screen and select **Edit Connections**.
3. Select **Dial-up Connections** in the *Connections* screen.
4. In the *Dial-up Connections* screen, select **Add** from the menu.
5. In the *Add Dialup* screen, enter a name for the connection in the **Description** field.
6. In the **Connects to** field, select **Work**.
7. Enter the appropriate information for the remaining fields, and press the **Done** softkey.

In the same way as above, you can choose the following in the *Connections* screen, then select **Add** from the menu to add new connections:

## VPN Connections

A VPN connection is used to access your corporate network using an existing Internet connection.

## Proxy Connections

A Proxy connection is used to access the Internet using an existing connection to your corporate or a WAP network.

## GPRS Connections

If there is GPRS coverage in your area, you can set up a GPRS connection to access your corporate network or the Internet, which is faster than a Dial-up connection.

## Options

After selecting **Settings > Data Connections**, you can select **Options** from the menu in the *Data Connections* screen to specify number of redial attempts, amount of idle time to wait before disconnecting, and type of connection your desktop has.

## Adding a URL Exception

Some URLs for Web pages on your company Intranet may use periods, for example: intranet.companyname.com. To view these pages in Pocket Internet Explorer, you must create a URL exception. Otherwise, the pages will not display.

**NOTE:** You do not need to create URL exceptions for Internet URLs.

1. Select **Settings > Data Connections** from the Start menu.
2. Select **Work URL Exceptions** from the menu.
3. Select **Add** from the menu.
4. In the **URL Pattern** field, enter the URL. Separate multiple URLs with a semicolon (;). Then select **Done**.



## 5.2 Pocket Internet Explorer

Using Pocket Internet Explorer (IE), you can browse the World Wide Web on your phone. Pocket IE supports HTML (Hypertext Markup Language), cHTML (compact Hypertext Markup Language), xHTML, WML 2.0, and WAP (Wireless Application Protocol). It also supports JScript, ActiveX controls, and CSS (cascading style sheets). The browser supports images and sounds, but it does not support frames on a Web page.

### Starting Internet Explorer

When in the Home screen, select **Internet Explorer** from the Start menu.

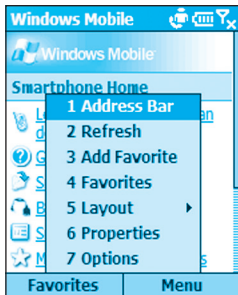
The first time you do this, a default list of Favorites should appear. If you select one and then press the Action button or the Left Softkey (“Go”), IE will open that web page.

### Entering a URL

To go to a WWW site not listed in your Favorites, open the menu and select **Address Bar**. In the *Address Bar* screen, enter the desired URL, then press the **Go** softkey.

### Viewing a list of recently-visited web pages

In the *Address Bar* screen, select **View History** and then press the Action button or the **Go** softkey to view a list of recently-visited Web pages. To go to a Web page listed in the *History* screen, select it and then press the Action button or the **Go** softkey.



Press the Back button on your phone to return to a Web page you visited in the same session.

The phone caches the Web pages that you view and stores them until the cache is full. It then replaces the oldest pages with the new pages. If you go back to a page that is cached on your phone, you see the stored version unless you refresh the page to see the latest version.

If you want to refresh a page other than the one currently displayed, select the page listed in your History or Favorites and open it. Then select **Refresh** from the menu.

**NOTE:** While you are connected to the Internet, you can change between Pocket Internet Explorer and other programs on your phone by pressing the Home key and invoking the program you want. This does not close your Internet connection. Subsequently returning to Internet Explorer in the same phone session would re-display the most recently opened Web page. (To terminate the Internet Explorer program, you can use the Task Manager utility explained in Chapter 8.)

## Using the Favorites list

If you see a Web page you want to visit another time, mark it as a favorite. The next time you want to visit that Web page, you can select it from your Favorites list.

If you select **Add Favorite** from the menu when the desired Web page is open, the name and URL of the current page is already filled in. You can edit the *Name* field and/or *Address (URL)* field if necessary. If you previously created additional folders, select a folder in the *Folder* field. Then select **Add** to add it to your Favorites.

By default, only the Favorites folder exists. To create a new folder in which to place URLs, select **Add Folder** from the menu in the Favorites screen.

To edit the Name, Address (URL), or Folder fields of an existing entry in your favorites, select the desired Favorite in the list, then select **Edit** from the menu. To delete a favorite, select **Delete**.

## Customizing Pocket Internet Explorer

You can customize Web browsing options, change the network to connect to, and make more memory available on your phone by clearing stored cookies and Web pages.

Select **Options** from the menu, then select either *General*, *Connections*, or *Memory*:

### General

Enables you to change the way Web pages are downloaded and displayed. For example, you can choose to omit displaying images, turn off sound, fit the Web page to the screen, request a warning before viewing unsecure Web pages, allow cookies, or change the language.

### Connections

Enables you to change the network to connect to. For example, change from "The Internet" to "Work".

### Memory

Enables you to clear temporary Internet files, cookies, and your Web history.

You can also select **Layout** on the menu to change the layout of the Web pages on your screen, or select **Properties** to view various data such as file size, type, etc.

**NOTE:** To stop downloading a Web page, press the Left Softkey ("Stop").

## 5.3 Bluetooth

Bluetooth is a short-range wireless communications technology. Devices with Bluetooth capabilities can exchange information over a distance of about 10 meters (30 feet) without requiring a physical connection.

Unlike infrared beaming, you don't need to line up the devices to beam information with Bluetooth. The devices only need to be within a range of about 10 meters. You can even beam information to a device in a different room, as long as it's within range.

The software included with your phone allows you to use Bluetooth to beam information such as files, contact cards, appointments, and tasks to other Bluetooth-enabled devices.

### Bluetooth modes

Select **Settings > Bluetooth > Bluetooth**. Then select **On**, **Off**, or **Discoverable**. The behavior of each of these modes is summarized below.

**On** — The Bluetooth radio is turned on and you can use Bluetooth features.

**Off** — The Bluetooth radio is turned off. You might want to turn the radio off at times to conserve battery power, or in situations where radio use is prohibited, like on airplanes and in hospitals. Bluetooth is also turned off when you turn Flight Mode on.

By default the Bluetooth radio is turned off. If you turn it on, and then turn off your device, the Bluetooth radio also turns off. When you turn on your device again, the Bluetooth radio turns on automatically.

**Discoverable** — The Bluetooth radio is turned on, and any other Bluetooth devices within range (about 10 meters) can detect your device and attempt to beam information to it, establish a bond, or use a Bluetooth service. In this mode, other devices can detect your device, whether or not a bond has been created. However, in order to receive a beam from another device, you must accept it on your device.

If you no longer want your device to be discoverable, select **Off** to turn off the radio; or **On** to leave the radio on but not allow detection by other devices.

## Bonds

A bond is a relationship that you create between your phone and another Bluetooth device in order to exchange information more securely. Creating a bond involves entering the same personal identification number (PIN) on the two devices you want to bond. Once a bond is created, the devices recognize the bond and are able to exchange information without your entering a PIN again.

### To create a bond:

1. Make sure that the two devices are within 10 meters of each other and that Bluetooth is in discoverable mode on both devices.
2. When in the Home screen, select **Settings > Bluetooth > Bluetooth** from the Start menu.
3. Select **Bonded Devices** from the menu, and then **New**. Your device searches for other Bluetooth devices and displays them in the list.
4. Select the device you want, then select **Add**.
5. In **PIN**, enter a PIN of between 1 and 16 characters, and select **Done**.
6. Enter the same PIN on the other device.
7. If desired, enter the name of the other device in **Name**, and select **Done**.

### To accept a bond:

1. Make sure that Bluetooth is turned on and in Discoverable mode.
2. When prompted to bond with the other device, select **Yes**.
3. In **PIN**, enter a PIN of between 1 and 16 characters, and select **Done**. You must enter the same PIN that was entered on the device requesting the bond.
4. Optionally, you can enter the name of the device requesting the bond in the **Name** field.
5. Select **Done**. The bond is now created. You can now exchange information with the other device.

### To delete a bond:

1. Select **Settings > Bluetooth > Bluetooth** from the Start menu.
2. Select **Bonded Devices** from the menu.
3. Select the bond you want to delete, then select **Delete** from the menu.

NOTE: Select **Settings > Bluetooth > BT Setting** to enter a name for your device; to enable/disable Beam Authentication requirements; or perform ActiveSync setup (bond with other Bluetooth device which supports serial port or ActiveSync profile as your ActiveSync partner).

## 5.4 Modem Link

Using **Modem Link**, you can use your phone as an external modem for another device or computer by using an infrared, bluetooth, or USB connection.

### To set up an infrared or USB modem connection:

1. Ensure that your phone is not connected to another device.
2. Select **Accessories > Modem Link** from the Start menu.
3. In the **Connection** field, select **USB** or **IrCOMM**.
4. Select **Activate** from the menu.

NOTE: The default baud rate is set for 115,200.

### Deactivating:

To deactivate the Modem Link at any time, simply select **Deactivate** from the menu in Step 4 above.

NOTE: Failing to deactivate the modem link when you are finished using it might result in problems with using Active-Sync in the same session.



# Chapter 6

---

## Messaging Features

- 6.1 Setting up accounts
- 6.2 Managing accounts
- 6.3 Creating messages
- 6.4 Receiving E-mail and SMS messages
- 6.5 Viewing message folders
- 6.6 Managing Messaging
- 6.7 Instant messaging
- 6.8 MMS messaging



## 6.1 Setting up accounts

Your phone is equipped with powerful messaging features such as the ability to send and receive E-mail, Short Message Service (SMS), and Multimedia Messaging (MMS). It also allows you to view and manage your message folders, customize message notifications and use MSN Messenger to communicate with others. Please note that not all E-mail services allow users to set up POP3 on mobile devices. Consult your network administrator or service provider for more information on toll and service charges or other related information. This section describes the steps required for setting up the phone to send and receive E-mail messages.

### Configuring E-mail accounts

You can send E-mail messages by synchronizing or by connecting directly to an E-mail server through your Internet service provider or a corporate network.



#### To set up an E-mail account:

1. On the *Home* screen, select **Start > Messaging**.
2. Select **Outlook E-mail > Menu > Options**.
3. Select **Account Setup > Menu > New**.
4. Enter your display name for this E-mail account, and your E-mail address, and select **Next**.

**NOTE:** Before configuring E-mail on your phone, you must have an Internet and E-mail account. You will also need to configure your device's data connection, as described in Chapter 5.

5. In **E-mail address**, enter the address for this account. Leave the **Automatic setup** box checked to obtain E-mail setting from the Internet. The phone will make an Internet connection and attempt to determine the server settings for E-mail.
6. In **User name**, enter your user name. This is usually the first part of your E-mail address, which appears before the "at" sign (@).
7. In **Password**, enter your password.
8. In **Domain**, enter the domain name, if required.
9. To save your password, so that you do not need to enter it each time you connect to your E-mail server, select **Save password > Next**.

**NOTE:** If you save your password and then lose your phone, your E-mail could be accessed by someone else.

10. In **Server type**, scroll to select the type of E-mail server that hosts your mailbox (IMAP4 or POP3) and select **Next**. In **Account name**, enter a name for this account. You must use a different name for each account that you set up.
11. In **Network**, scroll to the type of network that your E-mail server runs on and select **Next**.
12. Enter information about your E-mail servers and select **Next**. If you are not sure what to enter, ask your network administrator.
13. Select message download options and select **Next**.
14. Select a connection option, select **Next > Finish**.