

Test Laboratory: Compliance Certification Services
File Name: R-Touch_L-CH_0.388mW_With memory card.da4

DUT: HTC Type & Serial Number: PC20B

Program: Right Head - Touched position; Air temp. 23 deg C, liquid temp. 20.5 deg C

Communication System: GSM 1900; Frequency: 1850.2 MHz; Duty Cycle: 1:8
Medium: Head 1900MHz ($\sigma = 1.3889$ mho/m, $\epsilon = 40.4$, $\rho = 1000$ kg/m³)
Phantom section: RightSection

DASY4 Configuration:

- Probe: ET3DV6 - SN1577; ConvF(5.3, 5.3, 5.3); Calibrated: 2/7/2003
- Sensor-Surface: 4mm (Mechanical Surface Detection)
- Electronics: DAE3 Sn427; Calibrated: 2/4/2003
- Phantom: SAM 2 - TP:1050
- Software: DASY4, V4.0 Build 51

Zoom Scan (5x5x7)/Cube 0: Measurement grid: dx=7.5mm, dy=7.5mm

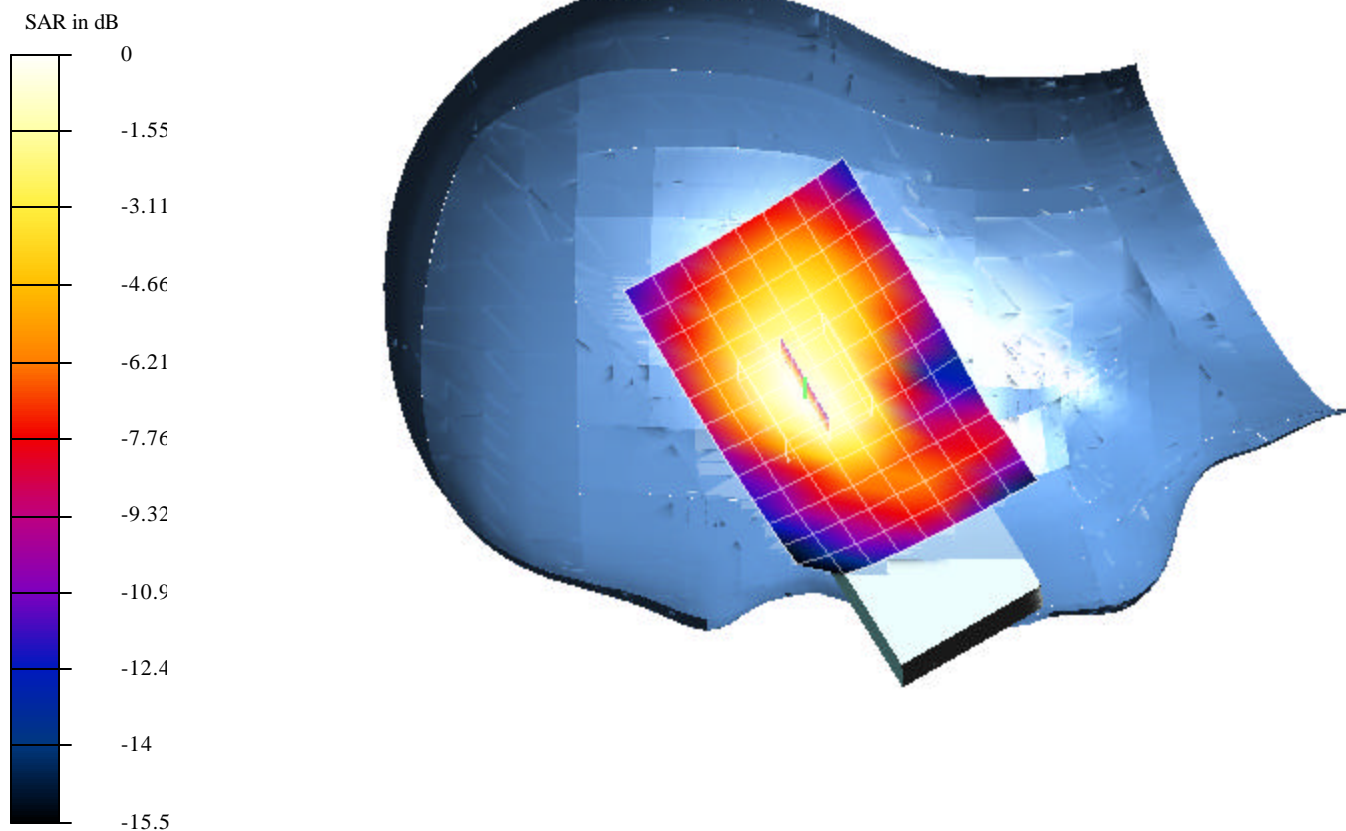
Reference Value = 14.4 V/m

Peak SAR = 0.555 mW/g

SAR(1 g) = 0.388 mW/g; SAR(10 g) = 0.242 mW/g

Power Drift = 0.01 dB

Area Scan (13x9x1): Measurement grid: dx=10mm, dy=10mm



Test Laboratory: Compliance Certification Services
File Name: R-Touch_L-CH_0.387mW_Without memory card.da4

DUT: HTC Type & Serial Number: PC20B

Program: Right Head - Touched position; Air temp. 23 deg C, liquid temp. 20.5 deg C

Communication System: GSM 1900; Frequency: 1909.8 MHz; Duty Cycle: 1:8
Medium: Head 1900MHz ($\sigma = 1.3889$ mho/m, $\epsilon = 40.4$, $\rho = 1000$ kg/m³)
Phantom section: RightSection

DASY4 Configuration:

- Probe: ET3DV6 - SN1577; ConvF(5.3, 5.3, 5.3); Calibrated: 2/7/2003
- Sensor-Surface: 4mm (Mechanical Surface Detection)
- Electronics: DAE3 Sn427; Calibrated: 2/4/2003
- Phantom: SAM 2 - TP:1050
- Software: DASY4, V4.0 Build 51

Zoom Scan (5x5x7)/Cube 0: Measurement grid: dx=7.5mm, dy=7.5mm

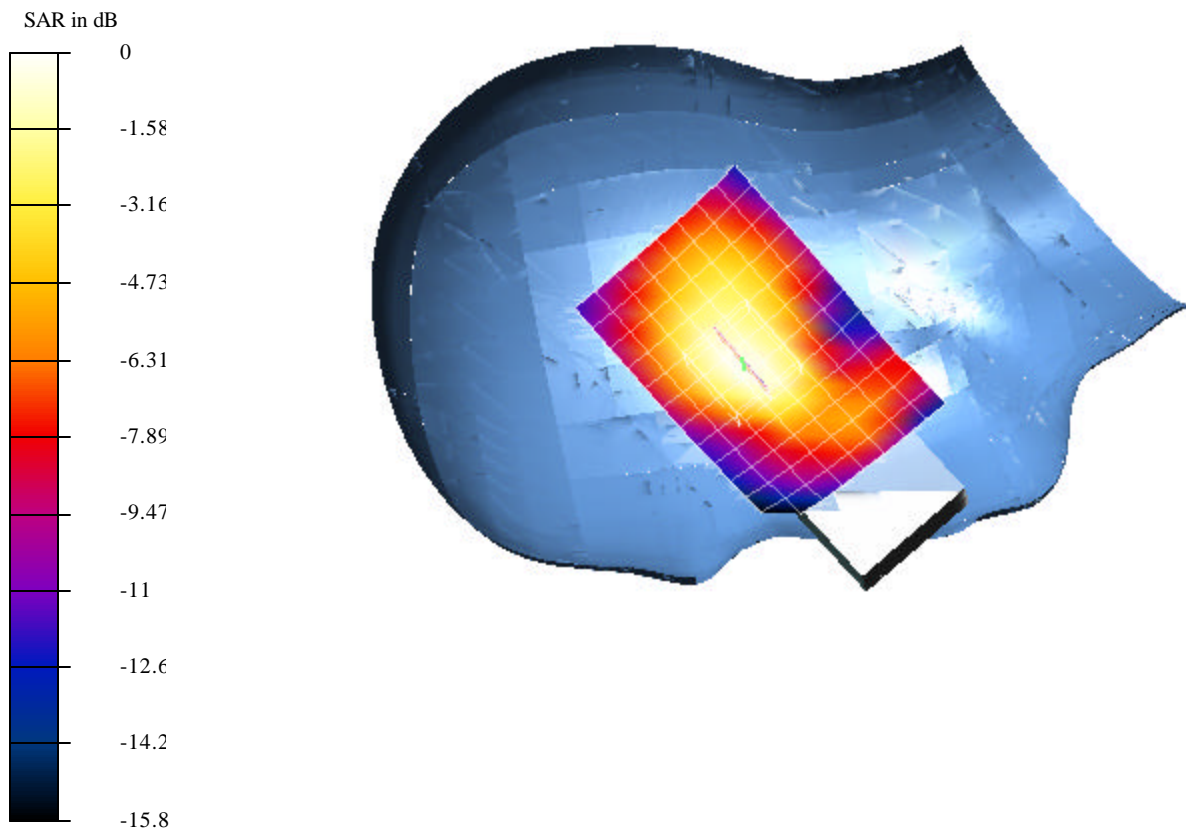
Reference Value = 14.3 V/m

Peak SAR = 0.557 mW/g

SAR(1 g) = 0.387 mW/g; SAR(10 g) = 0.239 mW/g

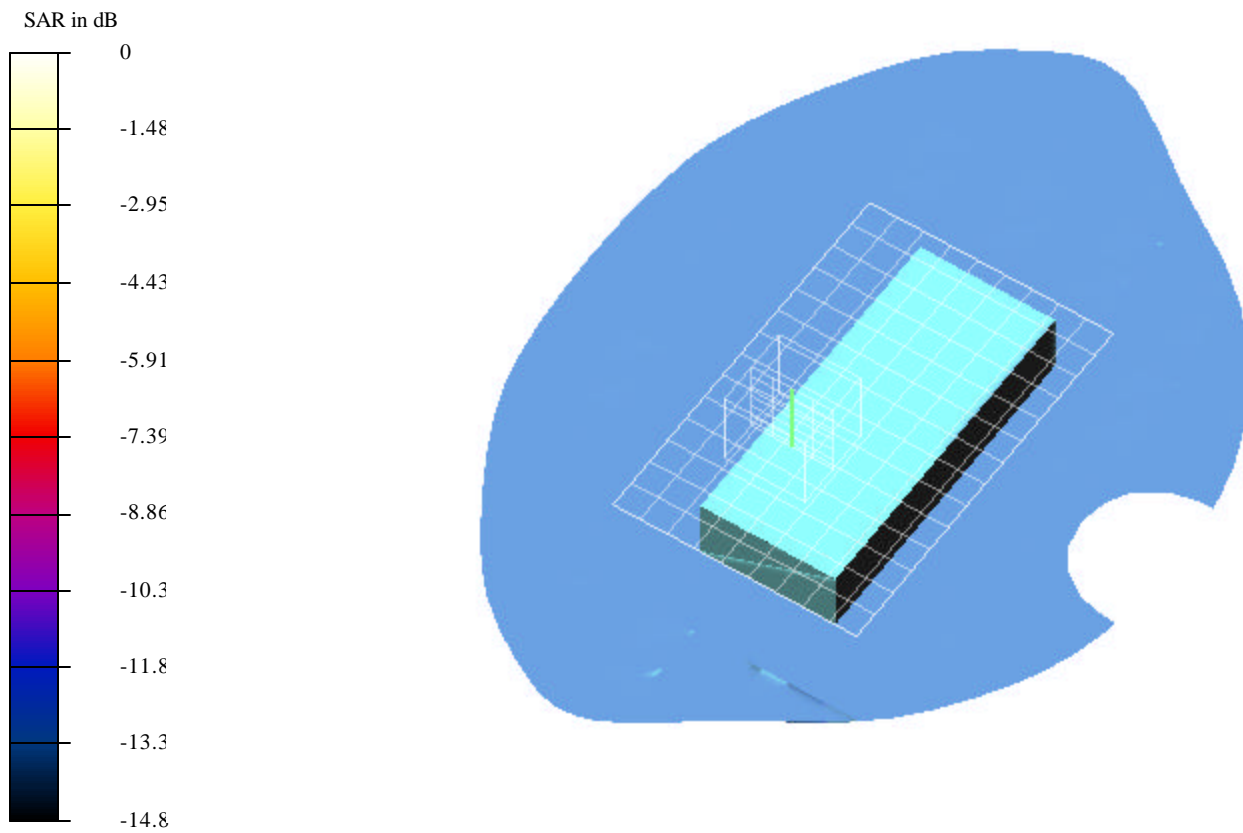
Power Drift = -0.04 dB

Area Scan (13x9x1): Measurement grid: dx=10mm, dy=10mm



Test Laboratory: Compliance Certification Services
File Name: Body_H-CH_0.421mW_Without memory card.da4

EUT Configuration 2 (Body/Flat position)



Test Laboratory: Compliance Certification Services
File Name: Body_H-CH_0.421mW_Without memory card.da4

DUT: HTC Type & Serial Number: PC20B

Program: Body - With holster and memory card; Air temp. 23 deg C, liquid temp. 20.2 deg C

Communication System: GSM 1900; Frequency: 1909.8 MHz; Duty Cycle: 1:8
Medium: Muscle 1900 MHz ($\sigma = 1.5422$ mho/m, $\epsilon = 52.24$, $\rho = 1000$ kg/m³)
Phantom section: FlatSection

DASY4 Configuration:

- Probe: ET3DV6 - SN1577; ConvF(5, 5, 5); Calibrated: 2/7/2003
- Sensor-Surface: 4mm (Mechanical Surface Detection)
- Electronics: DAE3 Sn427; Calibrated: 2/4/2003
- Phantom: SAM 1 - TP:1185
- Software: DASY4, V4.0 Build 51

Zoom Scan (5x5x7)/Cube 0: Measurement grid: dx=7.5mm, dy=7.5mm

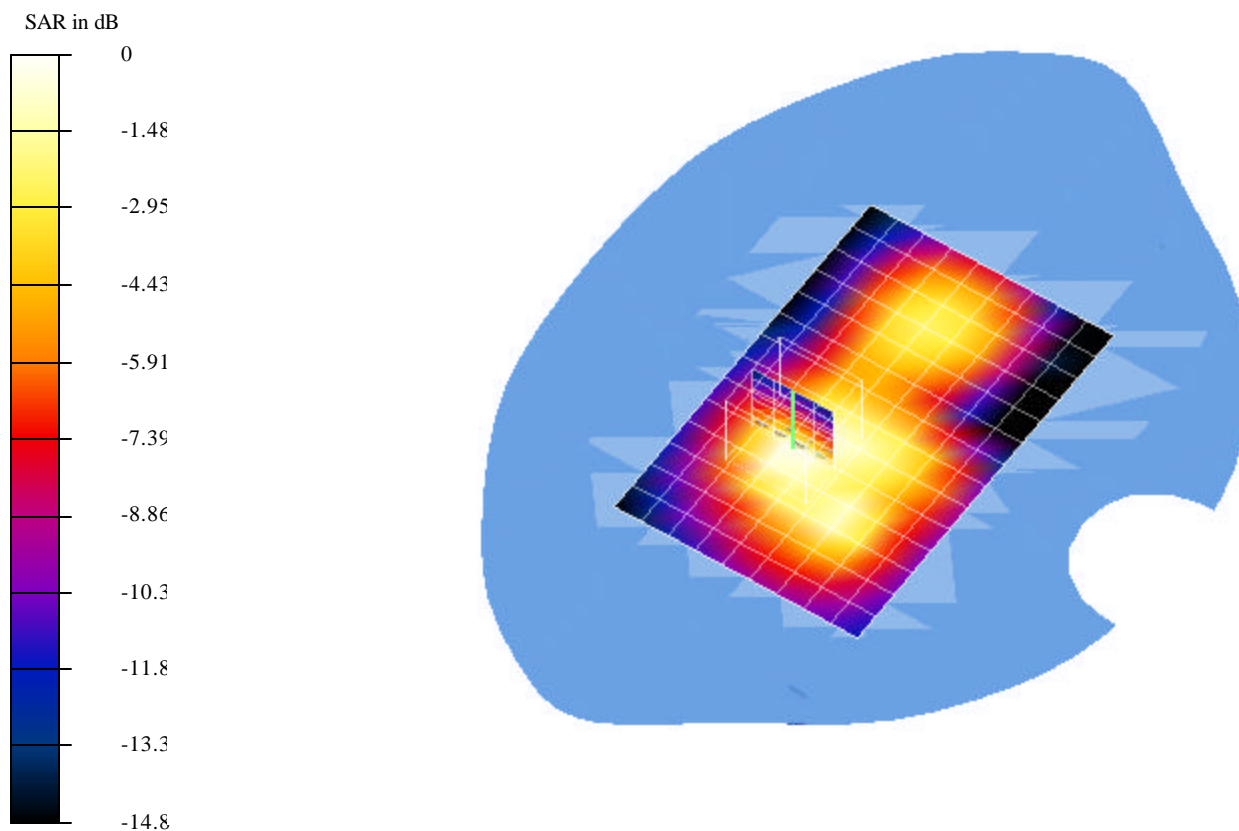
Reference Value = 11.4 V/m

Peak SAR = 0.713 mW/g

SAR(1 g) = 0.421 mW/g; SAR(10 g) = 0.239 mW/g

Power Drift = -0.1 dB

Area Scan (10x15x1): Measurement grid: dx=10mm, dy=10mm



Test Laboratory: Compliance Certification Services
File Name: Body_H-CH_0.352mW_Without memory card.da4

DUT: HTC Type & Serial Number: PC20B

Program: Body - With holster and memory card; Air temp. 23 deg C, liquid temp. 20.2 deg C

Communication System: GSM 1900; Frequency: 1909.8 MHz; Duty Cycle: 1:8
Medium: Muscle 1900 MHz ($\sigma = 1.5422$ mho/m, $\epsilon = 52.24$, $\rho = 1000$ kg/m³)
Phantom section: FlatSection

DASY4 Configuration:

- Probe: ET3DV6 - SN1577; ConvF(5, 5, 5); Calibrated: 2/7/2003
- Sensor-Surface: 4mm (Mechanical Surface Detection)
- Electronics: DAE3 Sn427; Calibrated: 2/4/2003
- Phantom: SAM 1 - TP:1185
- Software: DASY4, V4.0 Build 51

Zoom Scan (5x5x7)/Cube 1: Measurement grid: dx=7.5mm, dy=7.5mm

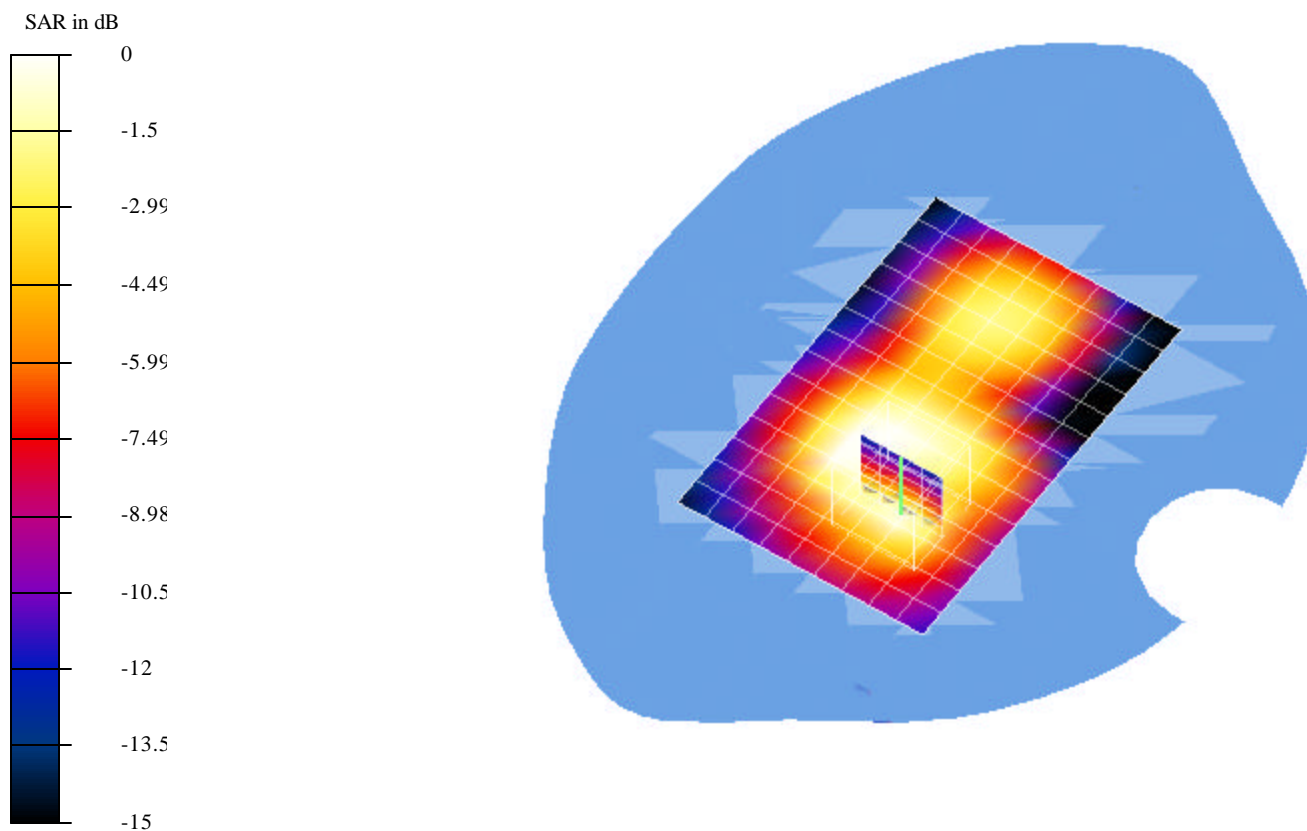
Reference Value = 11.4 V/m

Peak SAR = 0.605 mW/g

SAR(1 g) = 0.352 mW/g; SAR(10 g) = 0.192 mW/g

Power Drift = -0.1 dB

Area Scan (10x15x1): Measurement grid: dx=10mm, dy=10mm



Test Laboratory: Compliance Certification Services
File Name: 4Body_H-CH_0.432mW_With memory card.da4

DUT: HTC Type & Serial Number: PC20B

Program: Body - With holster and memory card; Air temp. 23 deg C, liquid temp. 20.3 deg C

Communication System: GSM 1900; Frequency: 1909.8 MHz; Duty Cycle: 1:8
Medium: Muscle 1900 MHz ($\sigma = 1.5422$ mho/m, $\epsilon = 52.24$, $\rho = 1000$ kg/m³)
Phantom section: FlatSection

DASY4 Configuration:

- Probe: ET3DV6 - SN1577; ConvF(5, 5, 5); Calibrated: 2/7/2003
- Sensor-Surface: 4mm (Mechanical Surface Detection)
- Electronics: DAE3 Sn427; Calibrated: 2/4/2003
- Phantom: SAM 1 - TP:1185
- Software: DASY4, V4.0 Build 51

Zoom Scan (5x5x7)/Cube 0: Measurement grid: dx=7.5mm, dy=7.5mm

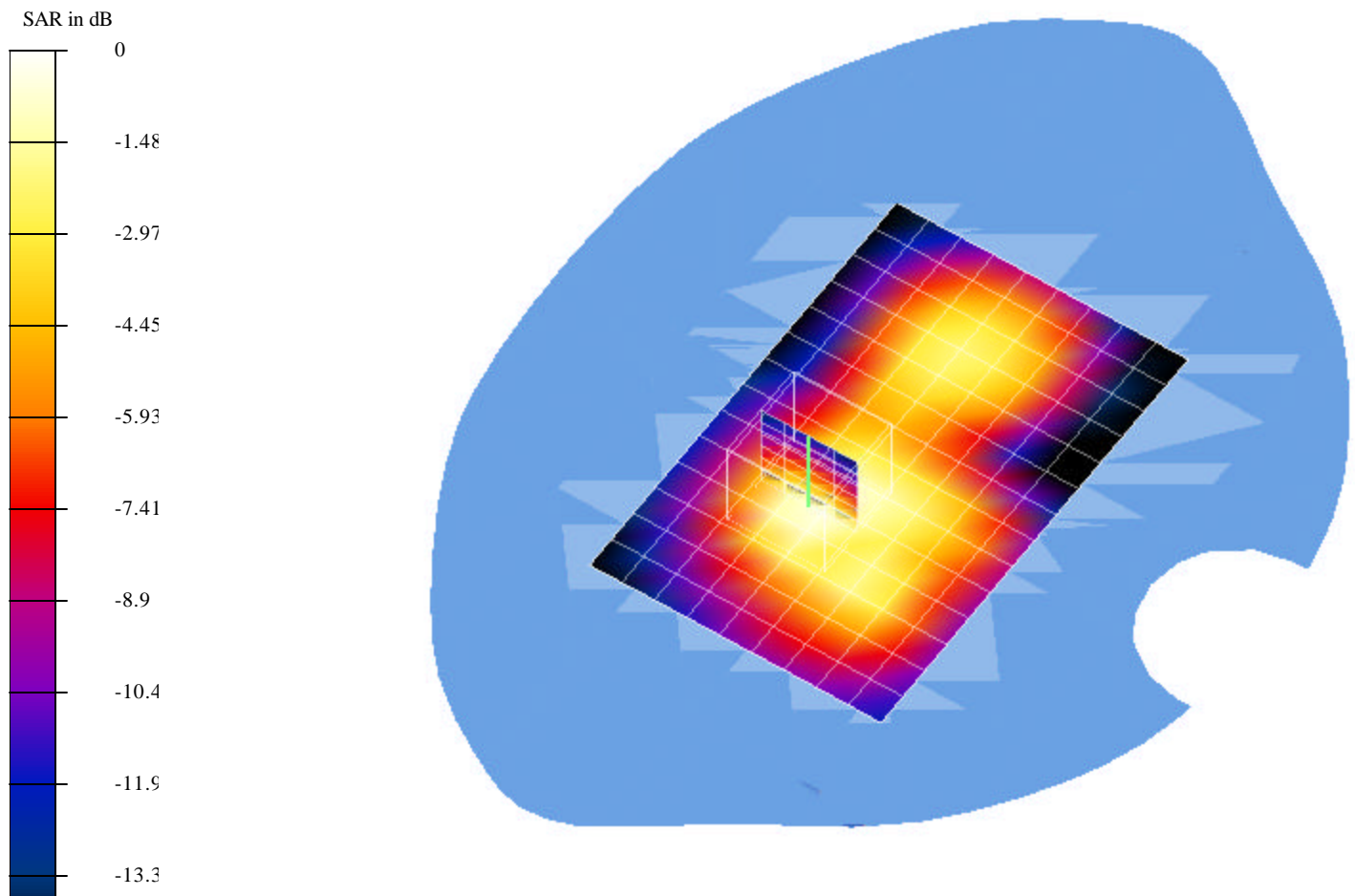
Reference Value = 10.8 V/m

Peak SAR = 0.729 mW/g

SAR(1 g) = 0.432 mW/g; SAR(10 g) = 0.245 mW/g

Power Drift = 0.1 dB

Area Scan (10x15x1): Measurement grid: dx=10mm, dy=10mm



Test Laboratory: Compliance Certification Services
File Name: 4Body_H-CH_0.289mW_With memory card.da4

DUT: HTC Type & Serial Number: PC20B

Program: Body - With holster and memory card; Air temp. 23 deg C, liquid temp. 20.3 deg C

Communication System: GSM 1900; Frequency: 1909.8 MHz; Duty Cycle: 1:8
Medium: Muscle 1900 MHz ($\sigma = 1.5422$ mho/m, $\epsilon = 52.24$, $\rho = 1000$ kg/m³)
Phantom section: FlatSection

DASY4 Configuration:

- Probe: ET3DV6 - SN1577; ConvF(5, 5, 5); Calibrated: 2/7/2003
- Sensor-Surface: 4mm (Mechanical Surface Detection)
- Electronics: DAE3 Sn427; Calibrated: 2/4/2003
- Phantom: SAM 1 - TP:1185
- Software: DASY4, V4.0 Build 51

Zoom Scan (5x5x7)/Cube 2: Measurement grid: dx=7.5mm, dy=7.5mm

Reference Value = 10.8 V/m

Peak SAR = 0.404 mW/g

SAR(1 g) = 0.289 mW/g; SAR(10 g) = 0.184 mW/g

Power Drift = 0.1 dB

Area Scan (10x15x1): Measurement grid: dx=10mm, dy=10mm

