

System Validation - D1800V2 S/N: 294

(Antenna input power: 250 mW)

SAM-2; Flat

Probe: ET3DV6 - SN1578; ConvF(5.50,5.50,5.50); Crest factor: 1.0

Head 1800 MHz: $\sigma = 1.42$ mho/m $\epsilon_r = 39.4$ $\rho = 1.00$ g/cm³

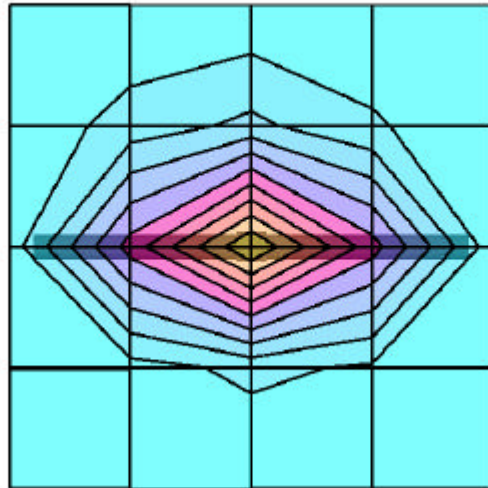
Cube 5x5x7: Peak: 17.3 mW/g, SAR (1g): 9.45 mW/g, SAR (10g): 4.98 mW/g, (Worst-case extrapolation)

Penetration depth: 8.4 (8.0, 9.2) [mm]

Powerdrift: -0.02 dB

Ambient Temperature (degree C): 22.0

Liquid Temperature (degree C): 20.5



SAR_{Tot} [mW/g]



System Validation - D1800V2 S/N: 294

(Antenna input power: 250 mW)

SAM-2;

Probe: ET3DV6 - SN1578; ConvF(5.50,5.50,5.50); Crest factor: 1.0

Head 1800 MHz: $\sigma = 1.42 \text{ mho/m}$ $\epsilon_r = 39.4$ $\rho = 1.00 \text{ g/cm}^3$

: , , ()

Penetration depth: 8.3 (7.9, 9.2) [mm]

Ambient Temperature (degree C): 22.0

Liquid Temperature (degree C): 20.5

