



Specific Absorption Rate (SAR) Test Report
for
HTC Corporation
on the
PDA Phone

Report No. : FA830416-03A
Model Name : RAPH101
FCC ID : NM8RPLT
Date of Testing : Jun. 14, 2008 ~ Aug. 30, 2008
Date of Report : Sep. 04, 2008
Date of Review : Sep. 04, 2008

- The test results refer exclusively to the presented test model / sample only.
- Without written approval of SPORTON International Inc., the test report shall not be reproduced except in full.
- Report Version: Rev. 06

SPORTON International Inc.

No. 52, Hwa Ya 1st Rd., Hwa Ya Technology Park, Kwei-Shan Hsiang, Tao Yuan Hsien, Taiwan, R.O.C.



Table of Contents

- 1. **Statement of Compliance**1
- 2. **Administration Data**2
 - 2.1 Testing Laboratory2
 - 2.2 Detail of Applicant2
 - 2.3 Detail of Manufacturer2
 - 2.4 Application Details2
- 3. **General Information**3
 - 3.1 Description of Device Under Test (DUT)3
 - 3.2 Basic Combination under Test3
 - 3.3 Product Photos3
 - 3.4 Applied Standards4
 - 3.5 Device Category and SAR Limits4
 - 3.6 Test Conditions4
 - 3.6.1 Ambient Condition4
 - 3.6.2 Test Configuration4
 - 3.6.3 FCC 3G SAR Measurement Procedures5
- 4. **Specific Absorption Rate (SAR)**6
 - 4.1 Introduction6
 - 4.2 SAR Definition6
- 5. **SAR Measurement Setup**7
 - 5.1 DASY5 E-Field Probe System8
 - 5.1.1 ET3DV6 E-Field Probe Specification8
 - 5.1.2 ET3DV6 E-Field Probe Calibration9
 - 5.2 DATA Acquisition Electronics (DAE)9
 - 5.3 Robot10
 - 5.4 Measurement Server10
 - 5.5 SAM Twin Phantom10
 - 5.6 Device Holder for SAM Twin Phantom12
 - 5.7 Data Storage and Evaluation13
 - 5.7.1 Data Storage13
 - 5.7.2 Data Evaluation13
 - 5.8 Test Equipment List15
- 6. **Tissue Simulating Liquids**16
- 7. **Uncertainty Assessment**18
- 8. **SAR Measurement Evaluation**20
 - 8.1 Purpose of System Performance check20
 - 8.2 System Setup20
 - 8.3 Validation Results22
- 9. **Description for DUT Testing Position**23
- 10. **Measurement Procedures**25
 - 10.1 Spatial Peak SAR Evaluation25
 - 10.2 Scan Procedures26
 - 10.3 SAR Averaged Methods26
- 11. **SAR Test Results**27
 - 11.1 Conducted Power27
 - 11.2 Test Records for Head SAR Test28
 - 11.3 Test Records for Body SAR Test29
- 12. **References**30
- Appendix A - System Performance Check Data**
- Appendix B - SAR Measurement Data**
- Appendix C - Calibration Data**
- Appendix D - Product Photos**
- Appendix E - Test Setup Photos**



1. Statement of Compliance

The Specific Absorption Rate (SAR) maximum results found during testing for the HTC Corporation PDA Phone RAPH101 are as follows (with expanded uncertainty 21.9%):

Position	GSM850		GSM1900		WCDMA Band V		WCDMA Band II	
	1g SAR (W/kg)	10g SAR (W/kg)	1g SAR (W/kg)	1g SAR (W/kg)	1g SAR (W/kg)	10g SAR (W/kg)	1g SAR (W/kg)	10g SAR (W/kg)
Head	0.371	0.274	0.694	0.401	0.268	0.189	0.872	0.547
Body	0.788	0.563	1.34	0.737	0.37	0.266	0.918	0.522

They are in compliance with Specific Absorption Rate (SAR) for general population/uncontrolled exposure limits specified in FCC 47 CFR part 2 (2.1093) and ANSI/IEEE C95.1-1999 and had been tested in accordance with the measurement methods and procedures specified in IEEE C95.3-2002, IEEE P1528-2003, and OET Bulletin 65 Supplement C (Edition 01-01).

Approved by

Roy Wu
Manager



2. Administration Data

2.1 Testing Laboratory

Company Name : Sporton International Inc.
Department : Antenna Design/SAR
Address : No.52, Hwa-Ya 1st RD., Hwa Ya Technology Park, Kwei-Shan Hsiang,
TaoYuan Hsien, Taiwan, R.O.C.
Telephone Number : 886-3-327-3456
Fax Number : 886-3-328-4978

2.2 Detail of Applicant

Company Name : HTC Corporation
Address : 23 Xinghua Rd., Taoyuan 330, Taiwan

2.3 Detail of Manufacturer

Company Name : HTC Corporation
Address : 23 Xinghua Rd., Taoyuan 330, Taiwan

2.4 Application Details

Date of reception of application: Jun. 05, 2008
Start of test : Jun. 14, 2008
End of test : Aug. 30, 2008

3. General Information

3.1 Description of Device Under Test (DUT)

Product Feature & Specification	
DUT Type :	PDA Phone
Model Name :	RAPH101
FCC ID :	NM8RPLT
Tx Frequency :	GSM850 : 824 MHz ~ 849 MHz GSM1900 : 1850 MHz ~ 1910 MHz WCDMA Band V : 824 MHz ~ 849 MHz WCDMA Band II : 1850 MHz ~ 1910 MHz
Rx Frequency :	GSM850 : 869 MHz ~ 894 MHz GSM1900 : 1930 MHz ~ 1990 MHz WCDMA Band V : 869 MHz ~ 894 MHz WCDMA Band II : 1930 MHz ~ 1990 MHz
Maximum Output Power to Antenna :	GSM850 : 32.63 dBm GSM1900 : 30.30 dBm WCDMA Band V : 23.59 dBm WCDMA Band II : 23.40 dBm
Type of Antenna Connector :	N/A
Antenna Type :	PIFA Antenna
Type of Modulation :	GSM / GPRS : GMSK EDGE : 8PSK WCDMA / HSDPA / HSUPA : QPSK / QAM
DUT Stage :	Identical Prototype

3.2 Basic Combination under Test

PDA Phone A	PDA with Camera 1
PDA Phone B	PDA with Camera 2

3.3 Product Photos

Please refer to Appendix E.

3.4 Applied Standards

The Specific Absorption Rate (SAR) testing specification, method and procedure for this PDA Phone is in accordance with the following standards:

- 47 CFR Part 2 (2.1093),
- IEEE C95.1-1999,
- IEEE C95.3-2002,
- IEEE P1528-2003, and
- OET Bulletin 65 Supplement C (Edition 01-01)
- Preliminary Guidance for Reviewing Applications for Certification of 3G Device. May 2006.
- SAR Measurement Procedures for 3G Devices. June 2006.
- KDB 648474 D01 v01r03

3.5 Device Category and SAR Limits

This device belongs to portable device category because its radiating structure is allowed to be used within 20 centimeters of the body of the user. Limit for General Population/Uncontrolled exposure should be applied for this device, it is 1.6 W/kg as averaged over any 1 gram of tissue.

3.6 Test Conditions

3.6.1 *Ambient Condition*

Item	HSL_850	MSL_850	HSL_1900	MSL_1900	MSL_1900
Ambient Temperature (°C)	20-24°C				
Tissue simulating liquid temperature (°C)	21.8°C	21.6°C	21.5°C	21.4°C	21.5°C
Humidity (%)	<60%				

3.6.2 *Test Configuration*

The device was controlled by using a base station emulator R&S CMU200. Communication between the device and the emulator was established by air link. The distance between the DUT and the antenna of the emulator is larger than 50 cm and the output power radiated from the emulator antenna is at least 30 dB smaller than the output power of DUT. The DUT was set from the emulator to radiate maximum output power during all tests.

Measurements were performed on the lowest, middle, and highest channel for each testing position. However, measurements were performed only on the middle channel if the SAR is below 3 dB of limit.

For SAR testing, EUT is in GSM/GPRS/EDGE or WCDMA/HSDPA/HSUPA link mode. In GSM link mode, its crest factor is 8.3. In GPRS/EDGE link mode, its crest factor is 4, because EUT is GPRS/EDGE class 10 device. In WCDMA/HSDPA/HSUPA link mode, its crest factor is 1.

FCC revised KDB 648474 on June 23, 2008. According KDB 648474, the simultaneous transmission SAR (volume scan) was not required, because the summation of SAR is 1.378 W/kg less than 1.6W/kg. The FCC rule please refer to figure 3.1.

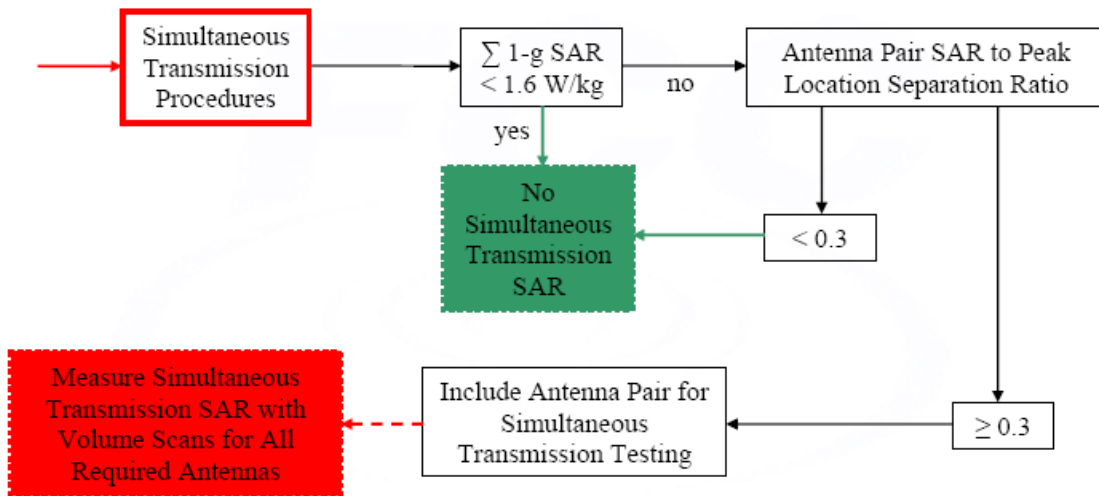


Fig. 3.1 KDB 648474 Simultaneous Transmission SAR Procedures for a Cell Phone

3.6.3 FCC 3G SAR Measurement Procedures

The EUT was tested according to the requirements of the FCC 3G procedures and the TS 34.121. For details, please find the separate reports.

4. Specific Absorption Rate (SAR)

4.1 Introduction

SAR is related to the rate at which energy is absorbed per unit mass in an object exposed to a radio field. The SAR distribution in a biological body is complicated and is usually carried out by experimental techniques or numerical modeling. The standard recommends limits for two tiers of groups, occupational/controlled and general population/uncontrolled, based on a person's awareness and ability to exercise control over his or her exposure. In general, occupational/controlled exposure limits are higher than the limits for general population/uncontrolled.

4.2 SAR Definition

The SAR definition is the time derivative (rate) of the incremental energy (dW) absorbed by (dissipated in) an incremental mass (dm) contained in a volume element (dv) of a given density (ρ). The equation description is as below:

$$\text{SAR} = \frac{d}{dt} \left(\frac{dW}{dm} \right) = \frac{d}{dt} \left(\frac{dW}{\rho dv} \right)$$

SAR is expressed in units of Watts per kilogram (W/kg)

SAR measurement can be either related to the temperature elevation in tissue by

$$\text{SAR} = C \frac{\delta T}{\delta t}$$

, where C is the specific heat capacity, δT is the temperature rise and δt the exposure duration,

or related to the electrical field in the tissue by

$$\text{SAR} = \frac{\sigma |E|^2}{\rho}$$

, where σ is the conductivity of the tissue, ρ is the mass density of the tissue and E is the rms electrical field strength.

However for evaluating SAR of low power transmitter, electrical field measurement is typically applied.

5. SAR Measurement Setup

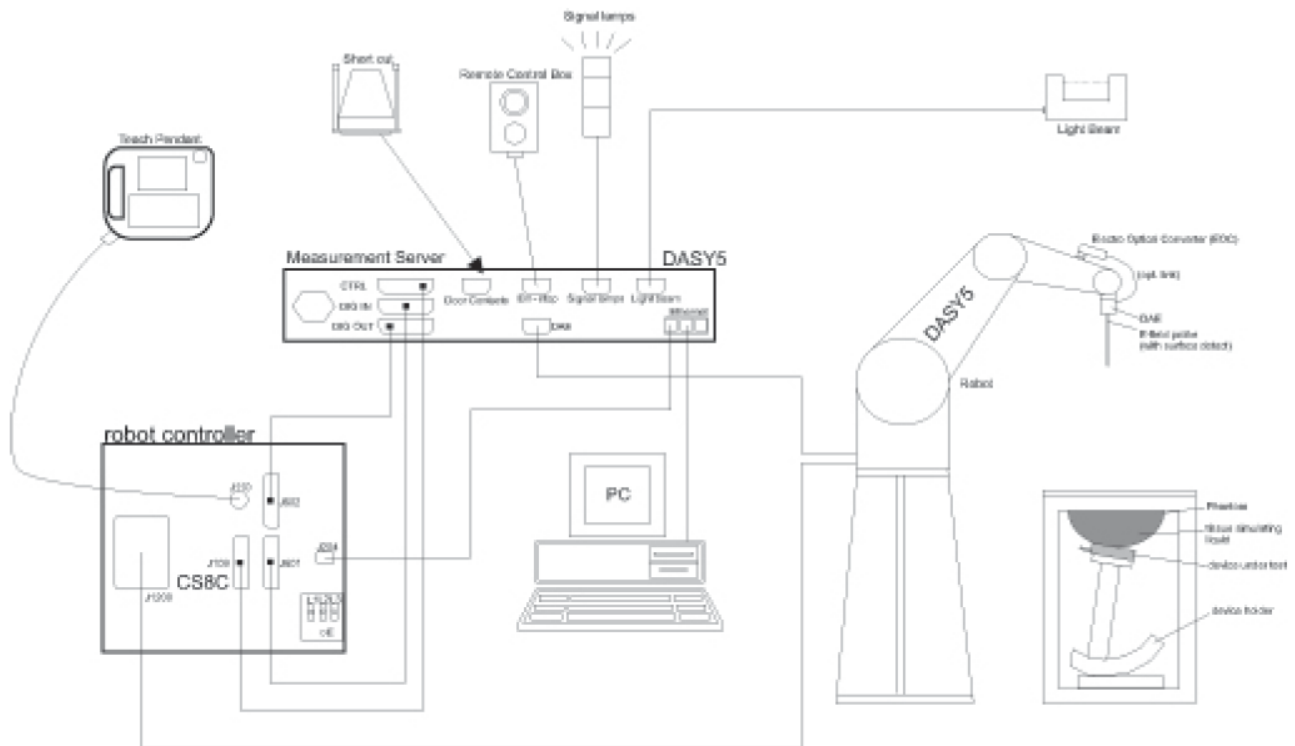


Fig. 5.1 DASY5 System

The DASY5 system for performance compliance tests is illustrated above graphically. This system consists of the following items:

- A standard high precision 6-axis robot with controller, a teach pendant and software
- A data acquisition electronic (DAE) attached to the robot arm extension
- A dosimetric probe equipped with an optical surface detector system
- The electro-optical converter (ECO) performs the conversion between optical and electrical signals
- A measurement server performs the time critical tasks such as signal filtering, control of the robot operation and fast movement interrupts.
- A probe alignment unit which improves the accuracy of the probe positioning
- A computer operating Windows XP
- DASY5 software
- Remove control with teach pendant and additional circuitry for robot safety such as warning lamps, etc.
- The SAM twin phantom
- A device holder
- Tissue simulating liquid
- Dipole for evaluating the proper functioning of the system

Some of the components are described in details in the following sub-sections.

5.1 DASY5 E-Field Probe System

The SAR measurement is conducted with the dosimetric probe ET3DV6 (manufactured by SPEAG). The probe is specially designed and calibrated for use in liquid with high permittivity. The dosimetric probe has special calibration in liquid at different frequency. This probe has a built in optical surface detection system to prevent from collision with phantom.

5.1.1 ET3DV6 E-Field Probe Specification

<ET3DV6>

Construction	Symmetrical design with triangular core Built-in optical fiber for surface detection system Built-in shielding against static charges PEEK enclosure material (resistant to organic solvents)
Frequency	10 MHz to 3 GHz
Directivity	± 0.2 dB in brain tissue (rotation around probe axis) ± 0.4 dB in brain tissue (rotation perpendicular to probe axis)
Dynamic Range	5 μ W/g to 100mW/g; Linearity: \pm 0.2dB
Surface Detection	± 0.2 mm repeatability in air and clear liquids on reflecting surface
Dimensions	Overall length: 330mm Tip length: 16mm Body diameter: 12mm Tip diameter: 6.8mm Distance from probe tip to dipole centers: 2.7mm
Application	General dosimetry up to 3GHz Compliance tests for mobile phones and Wireless LAN Fast automatic scanning in arbitrary phantoms



Fig. 5.2 Probe Setup on Robot

5.1.2 ET3DV6 E-Field Probe Calibration

Each probe needs to be calibrated according to a dosimetric assessment procedure with accuracy better than $\pm 10\%$. The spherical isotropy shall be evaluated and within $\pm 0.25\text{dB}$. The sensitivity parameters (NormX, NormY, and NormZ), the diode compression parameter (DCP) and the conversion factor (ConvF) of the probe are tested. The calibration data are as below:

➤ **ET3DV6 sn1788**

Sensitivity	X axis : 1.72 μV	Y axis : 1.66 μV	Z axis : 1.70 μV	
Diode compression point	X axis : 91 mV	Y axis : 93 mV	Z axis : 94 mV	
Conversion factor (Head / Body)	Frequency (MHz)	X axis	Y axis	Z axis
	800~1000	6.54 / 6.37	6.54 / 6.37	6.54 / 6.37
	1710~1910	5.28 / 4.75	5.28 / 4.75	5.28 / 4.75
Boundary effect (Head / Body)	Frequency (MHz)	Alpha	Depth	
	800~1000	0.22 / 0.28	3.28 / 2.94	
	1710~1910	0.59 / 0.63	2.15 / 2.39	

NOTE: The probe parameters have been calibrated by the SPEAG.

5.2 DATA Acquisition Electronics (DAE)

The data acquisition electronics (DAE3) consists of a highly sensitive electrometer-grade preamplifier with auto-zeroing, a channel and gain-switching multiplexer, a fast 16 bit AD-converter and a command decoder and control logic unit. Transmission to the measurement server is accomplished through an optical downlink for data and status information as well as an optical uplink for commands and the clock.

The mechanical probe mounting device includes two different sensor systems for frontal and sideways probe contacts. They are used for mechanical surface detection and probe collision detection.

The input impedance of the DAE3 is 200M Ohm; the inputs are symmetrical and floating. Common mode rejection is above 80dB.

5.3 Robot

The DASY5 system uses the high precision robots TX90 XL type out of the newer series from Stäubli SA (France). For the 6-axis controller DASY5 system, the CS8C robot controller version from Stäubli is used. The XL robot series have many features that are important for our application:

- High precision (repeatability 0.02 mm)
- High reliability (industrial design)
- Jerk-free straight movements
- Low ELF interference (the closed metallic construction shields against motor control fields)
- 6-axis controller

5.4 Measurement Server

The DASY5 measurement server is based on a PC/104 CPU board with
400 MHz CPU
128 MB chipdisk and
128 MB RAM.

Communication with
the DAE3 electronic box
the 16-bit AD-converter system for optical detection and digital I/O interface.

The measurement server performs all the real-time data evaluation for field measurements and surface detection, controls robot movements and handles safety operations.

5.5 SAM Twin Phantom

The SAM twin phantom is a fiberglass shell phantom with 2mm shell thickness (except the ear region where shell thickness increases to 6mm). It has three measurement areas:

- Left head
- Right head
- Flat phantom

The bottom plate contains three pair of bolts for locking the device holder. The device holder positions are adjusted to the standard measurement positions in the three sections. A white cover is provided to tap the phantom during off-periods to prevent water evaporation and changes in the liquid parameters. On the phantom top, three reference markers are provided to identify the phantom position with respect to the robot.

The phantom can be used with the following tissue simulating liquids:

*Water-sugar based liquid

*Glycol based liquids



Fig. 5.3 Top View of Twin Phantom



Fig. 5.4 Bottom View of Twin Phantom

5.6 Device Holder for SAM Twin Phantom

The SAR in the Phantom is approximately inversely proportional to the square of the distance between the source and the liquid surface. For a source in 5 mm distance, a positioning uncertainty of $\pm 0.5\text{mm}$ would produce a SAR uncertainty of $\pm 20\%$. An accurate device position is therefore crucial for accurate and repeatable measurement. The position in which the devices must be measured, are defined by the standards.

The DASY5 device holder is designed to cope with different positions given in the standard. It has two scales for the device rotation (with respect to the body axis) and the device inclination (with respect to the line between the ear reference points). The rotation center for both scales is the ear reference point (EPR).

Thus the device needs no repositioning when changing the angles.

The DASY5 device holder has been made out of low-loss POM material having the following dielectric parameters: relative permittivity $\epsilon_r=3$ and loss tangent $\delta = 0.02$. The amount of dielectric material has been reduced in the closest vicinity of the device, since measurements have suggested that the influence of the clamp on the test results could thus be lowered.



Fig. 5.6 Device Holder

5.7 Data Storage and Evaluation

5.7.1 Data Storage

The DASY5 software stores the assessed data from the data acquisition electronics as raw data (in microvolt readings from the probe sensors), together with all the necessary software parameters for the data evaluation (probe calibration data, liquid parameters and device frequency and modulation data) in measurement files with the extension .DA5. The post-processing software evaluates the desired unit and format for output each time the data is visualized or exported. This allows verification of the complete software setup even after the measurement and allows correction of erroneous parameter settings. For example, if a measurement has been performed with an incorrect crest factor parameter in the device setup, the parameter can be corrected afterwards and the data can be reevaluated.

The measured data can be visualized or exported in different units or formats, depending on the selected probe type (e.g., [V/m], [A/m], [mW/g]). Some of these units are not available in certain situations or give meaningless results, e.g., a SAR-output in a non-loss media, will always be zero. Raw data can also be exported to perform the evaluation with other software packages.

5.7.2 Data Evaluation

The DASY5 post-processing software (SEMCAD) automatically executes the following procedures to calculate the field units from the microvolt readings at the probe connector. The parameters used in the evaluation are stored in the configuration modules of the software :

Probe parameters :	- Sensitivity	$Norm_i, a_{i,0}, a_{i,1}, a_{i,2}$
	- Conversion factor	$ConvF_i$
	- Diode compression point	dcp_i
Device parameters :	- Frequency	f
	- Crest factor	cf
Media parameters :	- Conductivity	σ
	- Density	ρ

These parameters must be set correctly in the software. They can be found in the component documents or they can be imported into the software from the configuration files issued for the DASY5 components. In the direct measuring mode of the multi-meter option, the parameters of the actual system setup are used. In the scan visualization and export modes, the parameters stored in the corresponding document files are used.

The first step of the evaluation is a linearization of the filtered input signal to account for the compression characteristics of the detector diode. The compensation depends on the input signal, the diode type and the DC-transmission factor from the diode to the evaluation electronics. If the exciting field is pulsed, the crest factor of the signal must be known to correctly compensate for peak power.

The formula for each channel can be given as :

$$V_i = U_i + U_i^2 \cdot \frac{cf}{dcp_i}$$

with V_i = compensated signal of channel i ($i = x, y, z$)
 U_i = input signal of channel i ($i = x, y, z$)
 cf = crest factor of exciting field (DASY parameter)
 dcp_i = diode compression point (DASY parameter)

From the compensated input signals, the primary field data for each channel can be evaluated :

E-field probes : $E_i = \sqrt{\frac{V_i}{Norm_i ConvF}}$

H-field probes : $H_i = \sqrt{V_i} \frac{a_{i0} + a_{i1}f + a_{i2}f^2}{f}$

with V_i = compensated signal of channel i ($i = x, y, z$)
 $Norm_i$ = sensor sensitivity of channel i ($i = x, y, z$)
 $\mu V/(V/m)^2$ for E-field Probes
 $ConvF$ = sensitivity enhancement in solution
 a_{ij} = sensor sensitivity factors for H-field probes
 f = carrier frequency [GHz]
 E_i = electric field strength of channel i in V/m
 H_i = magnetic field strength of channel i in A/m

The RSS value of the field components gives the total field strength (Hermitian magnitude) :

$$E_{tot} = \sqrt{E_x^2 + E_y^2 + E_z^2}$$

The primary field data are used to calculate the derived field units.

$$SAR = E_{tot}^2 \cdot \frac{\sigma}{\rho \cdot 1000}$$

with SAR = local specific absorption rate in mW/g
 E_{tot} = total field strength in V/m
 σ = conductivity in [mho/m] or [Siemens/m]
 ρ = equivalent tissue density in g/cm³

* Note that the density is set to 1, to account for actual head tissue density rather than the density of the tissue simulating liquid.

The power flow density is calculated assuming the excitation field to be a free space field.

$$P_{pwe} = \frac{E_{tot}^2}{3770} \quad \text{or} \quad P_{pwe} = H_{tot}^2 \cdot 37.7$$

with P_{pwe} = equivalent power density of a plane wave in mW/cm²
 E_{tot} = total electric field strength in V/m
 H_{tot} = total magnetic field strength in A/m

5.8 Test Equipment List

Manufacture	Name of Equipment	Type/Model	Serial Number	Calibration	
				Last Cal.	Due Date
SPEAG	Dosimetric E-Filed Probe	ET3DV6	1788	Sep. 26, 2007	Sep. 26, 2008
SPEAG	835MHz System Validation Kit	D835V2	499	Mar. 17, 2008	Mar. 17, 2010
SPEAG	1900MHz System Validation Kit	D1900V2	5d041	Mar. 28, 2008	Mar. 28, 2010
SPEAG	Data Acquisition Electronics	DAE3	577	Nov. 16, 2007	Nov. 16, 2008
SPEAG	Device Holder	N/A	N/A	NCR	NCR
SPEAG	Phantom	QD 000 P40 C	TP-1303	NCR	NCR
SPEAG	Phantom	QD 000 P40 C	TP-1383	NCR	NCR
SPEAG	Robot	Staubli TX90XL	F03/5W15A1/A/01	NCR	NCR
SPEAG	Software	DASY5 V5.0 Build 91	N/A	NCR	NCR
SPEAG	Software	SEMCAD X V12.4 Build 52	N/A	NCR	NCR
SPEAG	Measurement Server	SE UMS 011 AA	1014	NCR	NCR
Agilent	PNA Series Network Analyzer	E8358A	US40260131	Apr. 02, 2008	Apr. 01, 2009
Agilent	Wireless Communication Test Set	E5515C	GB46311322	Dec. 22, 2006	Dec. 22, 2008
Agilent	Dielectric Probe Kit	85070D	US01440205	NCR	NCR
Agilent	Dual Directional Coupler	778D	50422	NCR	NCR
Agilent	Power Amplifier	8449B	3008A01917	NCR	NCR
R&S	Power Meter	NRVD	101394	Oct. 31, 2007	Oct. 30, 2008
R&S	Power Sensor	NRV-Z1	100130	Oct. 31, 2007	Oct. 30, 2008

Table 5.1 Test Equipment List

6. Tissue Simulating Liquids

For the measurement of the field distribution inside the SAM phantom with DASY5, the phantom must be filled with around 25 liters of homogeneous tissue simulating liquid. The liquid height from the ear reference point (ERP) of the phantom to the liquid top surface is (head SAR) or from the flat phantom to the liquid top surface (body SAR) is 15.2cm.

The following ingredients for tissue simulating liquid are used:

- **Water:** deionized water (pure H₂O), resistivity $\geq 16M\Omega$ - as basis for the liquid
- **Sugar:** refined sugar in crystals, as available in food shops – to reduce relative permittivity
- **Salt:** pure NaCl – to increase conductivity
- **Cellulose:** Hydroxyethyl-cellulose, medium viscosity (75-125 mPa.s, 2% in water, 20°C), CAS#54290-to increase viscosity and to keep sugar in solution.
- **Preservative:** Preventol D-7 Bayer AG, D-51368 Leverkusen, CAS#55965-84-9- to prevent the spread of bacteria and molds.
- **DGMBE:** Deithlenglycol-monobuthyl ether (DGMBE), Fluka Chemie GmbH, CAS#112-34-5 – to reduce relative permittivity.

Table 6.1 gives the recipes for one liter of head and body tissue simulating liquid for frequency band 850MHZ and 1900 MHz.

Ingredient	HSL-850	MSL-850	HSL-1900	MSL-1900
Water	532.98 g	631.68 g	552.42 g	716.56 g
Cellulose	0 g	0 g	0 g	0 g
Salt	18.3 g	11.72 g	3.06 g	4.0 g
Preventol D-7	2.4 g	1.2 g	0 g	0 g
Sugar	766.0 g	600.0 g	0 g	0 g
DGMBE	0 g	0 g	444.52 g	300.67 g
Total amount	1 liter (1.3 kg)	1 liter (1.3 kg)	1 liter (1.0 kg)	1 liter (1.0 kg)
Dielectric Parameters at 22°	f = 835 MHz $\epsilon_r = 41.5 \pm 5\%$, $\sigma = 0.90 \pm 5\%$ S/m	f = 835 MHz $\epsilon_r = 55.2 \pm 5\%$, $\sigma = 0.97 \pm 5\%$ S/m	f = 1900 MHz $\epsilon_r = 40.0 \pm 5\%$, $\sigma = 1.4 \pm 5\%$ S/m	f = 1900 MHz $\epsilon_r = 53.3 \pm 5\%$, $\sigma = 1.52 \pm 5\%$ S/m

Table 6.1 Recipes for Tissue Simulating Liquid

The dielectric parameters of the liquids were verified prior to the SAR evaluation using an Agilent 85070D Dielectric Probe Kit and an Agilent Network Analyzer.

Table 6.2 shows the measuring results for head and muscle simulating liquid.

Band	Position	Frequency (MHz)	Permittivity (ϵ_r)	Conductivity (σ)	Measurement Date
GSM850	Head	824.2	40.7	0.898	Jun.14, 2008
		836.4	40.6	0.909	
		848.8	40.4	0.918	
	Body	824.2	56.3	0.951	Jun.15, 2008
		836.4	56.3	0.962	
		848.8	56.1	0.971	
GSM1900	Head	1850.2	38.6	1.370	Jun.14, 2008
		1880.0	38.5	1.400	
		1909.8	38.4	1.430	
	Body	1850.2	51.2	1.470	Jun.15, 2008
		1880.0	51.1	1.500	
		1909.8	51.0	1.530	
	Body	1850.2	52.4	1.510	Jul. 02, 2008
		1880.0	51.8	1.490	
		1909.8	51.1	1.460	
	Body	1850.2	52.9	1.460	Jul. 23, 2008
		1880.0	52.9	1.480	
		1909.8	52.1	1.540	
WCDMA Band V	Head	826.4	40.7	0.900	Jun.14, 2008
		836.4	40.6	0.909	
		846.6	40.5	0.916	
	Body	826.4	56.3	0.953	Jun.15, 2008
		836.4	56.3	0.962	
		846.6	56.2	0.969	
WCDMA Band II	Head	1852.4	38.6	1.380	Jun.14, 2008
		1880.0	38.5	1.400	
		1907.6	38.4	1.430	
	Head	1852.4	41.9	1.350	Jul. 23, 2008
		1880.0	41.8	1.390	
		1907.6	42.0	1.430	
	Body	1852.4	51.2	1.470	Jun.15, 2008
		1880.0	51.1	1.500	
		1907.6	51.0	1.530	

Table 6.2 Measuring Results for Simulating Liquid

The measuring data are consistent with $\epsilon_r = 41.5 \pm 5\%$ and $\sigma = 0.9 \pm 5\%$ for head GSM850 and WCDMA Band V, $\epsilon_r = 55.2 \pm 5\%$ and $\sigma = 0.97 \pm 5\%$ for body GSM850 and WCDMA Band V, $\epsilon_r = 40.0 \pm 5\%$ and $\sigma = 1.4 \pm 5\%$ for head GSM1900 and WCDMA Band II, and $\epsilon_r = 53.3 \pm 5\%$ and $\sigma = 1.52 \pm 5\%$ for body GSM1900 and WCDMA Band II.

7. Uncertainty Assessment

The component of uncertainty may generally be categorized according to the methods used to evaluate them. The evaluation of uncertainty by the statistical analysis of a series of observations is termed a Type A evaluation of uncertainty. The evaluation of uncertainty by means other than the statistical analysis of a series of observation is termed a Type B evaluation of uncertainty. Each component of uncertainty, however evaluated, is represented by an estimated standard deviation, termed standard uncertainty, which is determined by the positive square root of the estimated variance.

A Type A evaluation of standard uncertainty may be based on any valid statistical method for treating data. This includes calculating the standard deviation of the mean of a series of independent observations; using the method of least squares to fit a curve to the data in order to estimate the parameter of the curve and their standard deviations; or carrying out an analysis of variance in order to identify and quantify random effects in certain kinds of measurement.

A type B evaluation of standard uncertainty is typically based on scientific judgment using all of the relevant information available. These may include previous measurement data, experience and knowledge of the behavior and properties of relevant materials and instruments, manufacture’s specification, data provided in calibration reports and uncertainties assigned to reference data taken from handbooks. Broadly speaking, the uncertainty is either obtained from an outdoor source or obtained from an assumed distribution, such as the normal distribution, rectangular or triangular distributions indicated in Table 7.1

Uncertainty Distributions	Normal	Rectangular	Triangular	U-shape
Multiplying factor^(a)	1/k ^(b)	1/√3	1/√6	1/√2

(a) standard uncertainty is determined as the product of the multiplying factor and the estimated range of variations in the measured quantity

(b) *k* is the coverage factor

Table 7.1 Multiplying Factors for Various Distributions

The combined standard uncertainty of the measurement result represents the estimated standard deviation of the result. It is obtained by combining the individual standard uncertainties of both Type A and Type B evaluation using the usual “root-sum-squares” (RSS) methods of combining standard deviations by taking the positive square root of the estimated variances.

Expanded uncertainty is a measure of uncertainty that defines an interval about the measurement result within which the measured value is confidently believed to lie. It is obtained by multiplying the combined standard uncertainty by a coverage factor. Typically, the coverage factor ranges from 2 to 3. Using a coverage factor allows the true value of a measured quantity to be specified with a defined probability within the specified uncertainty range. For purpose of this document, a coverage factor two is used, which corresponds to confidence interval of about 95 %. The DASY5 uncertainty Budget is showed in Table 7.2.



Error Description	Uncertainty Value ± %	Probability Distribution	Divisor	Ci (1g)	Standard Unc. (1g)	vi or Veff
Measurement Equipment						
Probe Calibration	±5.9 %	Normal	1	1	±5.9 %	∞
Axial Isotropy	±4.7 %	Rectangular	√3	0.7	±1.9 %	∞
Hemispherical Isotropy	±9.6 %	Rectangular	√3	0.7	±3.9 %	∞
Boundary Effects	±1.0 %	Rectangular	√3	1	±0.6 %	∞
Linearity	±4.7 %	Rectangular	√3	1	±2.7 %	∞
System Detection Limits	±1.0 %	Rectangular	√3	1	±0.6 %	∞
Readout Electronics	±0.3 %	Normal	1	1	±0.3 %	∞
Response Time	±0.8 %	Rectangular	√3	1	±0.5 %	∞
Integration Time	±2.6 %	Rectangular	√3	1	±1.5 %	∞
RF Ambient Noise	±3.0 %	Rectangular	√3	1	±1.7 %	∞
RF Ambient Reflections	±3.0 %	Rectangular	√3	1	±1.7 %	∞
Probe Positioner	±0.4 %	Rectangular	√3	1	±0.2 %	∞
Probe Positioning	±2.9 %	Rectangular	√3	1	±1.7 %	∞
Max. SAR Eval.	±1.0 %	Rectangular	√3	1	±0.6 %	∞
Test Sample Related						
Device Positioning	±2.9 %	Normal	1	1	±2.9	145
Device Holder	±3.6 %	Normal	1	1	±3.6	5
Power Drift	±5.0 %	Rectangular	√3	1	±2.9	∞
Phantom and Setup						
Phantom Uncertainty	±4.0 %	Rectangular	√3	1	±2.3	∞
Liquid Conductivity (target)	±5.0 %	Rectangular	√3	0.64	±1.8	∞
Liquid Conductivity (meas.)	±2.5 %	Normal	1	0.64	±1.6	∞
Liquid Permittivity (target)	±5.0 %	Rectangular	√3	0.6	±1.7	∞
Liquid Permittivity (meas.)	±2.5 %	Normal	1	0.6	±1.5	∞
Combined Standard Uncertainty					±10.9	387
Coverage Factor for 95 %		K=2				
Expanded uncertainty (Coverage factor = 2)					±21.9	

Table 7.2 Uncertainty Budget of DASYS

8. SAR Measurement Evaluation

Each DASY5 system is equipped with one or more system validation kits. These units, together with the predefined measurement procedures within the DASY5 software, enable the user to conduct the system performance check and system validation. System validation kit includes a dipole, tripod holder to fix it underneath the flat phantom and a corresponding distance holder.

8.1 Purpose of System Performance check

The system performance check verifies that the system operates within its specifications. System and operator errors can be detected and corrected. It is recommended that the system performance check be performed prior to any usage of the system in order to guarantee reproducible results. The system performance check uses normal SAR measurements in a simplified setup with a well characterized source. This setup was selected to give a high sensitivity to all parameters that might fail or vary over time. The system check does not intend to replace the calibration of the components, but indicates situations where the system uncertainty is exceeded due to drift or failure.

8.2 System Setup

In the simplified setup for system evaluation, the DUT is replaced by a calibrated dipole and the power source is replaced by a continuous wave which comes from a signal generator at frequency 835 MHz and 1900 MHz. The calibrated dipole must be placed beneath the flat phantom section of the SAM twin phantom with the correct distance holder. The distance holder should touch the phantom surface with a light pressure at the reference marking and be oriented parallel to the long side of the phantom. The equipment setup is shown below:

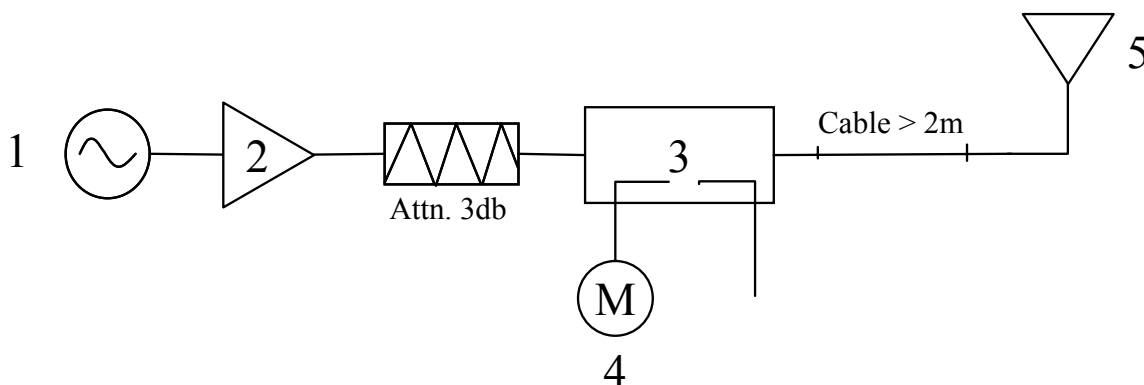


Fig. 8.1 System Setup for System Evaluation

1. Signal Generator
2. Amplifier
3. Directional Coupler
4. Power Meter
5. 835 MHz or 1900 MHz Dipole

The output power on dipole port must be calibrated to 20dBm (100mW) before dipole is connected.



Fig 8.2 Dipole Setup

8.3 Validation Results

Comparing to the original SAR value provided by SPEAG, the validation data should be within its specification of 10 %. Table 8.1 shows the target SAR and measured SAR after normalized to 1W input power.

Frequency	Position	SAR	Target (W/kg)	Measurement Data (W/kg)	Variation	Measurement Date
835MHz	Head	SAR (1g)	9.16	9.27	1.2 %	Jun. 14, 2008
		SAR (10g)	6.00	6.06	1.0 %	
	Body	SAR (1g)	9.52	10.20	7.1 %	Jun. 15, 2008
		SAR (10g)	6.37	6.75	6.0 %	
1900MHz	Head	SAR (1g)	39.50	38.80	-1.8 %	Jun. 14, 2008
		SAR (10g)	20.60	20.20	-1.9 %	
	Head	SAR (1g)	39.50	38.40	-2.8 %	Jul. 23, 2008
		SAR (10g)	20.60	20.00	-2.9 %	
	Body	SAR (1g)	40.10	41.80	4.2 %	Jun. 15, 2008
		SAR (10g)	21.30	22.10	3.8 %	
	Body	SAR (1g)	40.10	40.80	1.7 %	Jul. 02, 2008
		SAR (10g)	21.30	21.70	1.9 %	
	Body	SAR (1g)	40.10	40.60	1.2 %	Jul. 23, 2008
		SAR (10g)	21.30	21.70	1.9 %	

Table 8.1 Target and Measurement Data Comparison

The table above indicates the system performance check can meet the variation criterion.

9. Description for DUT Testing Position

This DUT was tested in 6 different positions. They are right cheek, right tilted, left cheek, left tilted, face with 1.5cm Gap and bottom with 1.5cm Gap as illustrated below:

- 1) “Cheek Position”
 - i) To position the device with the vertical center line of the body of the device and the horizontal line crossing the center piece in a plane parallel to the sagittal plane of the phantom. While maintaining the device in this plane, align the vertical center line with the reference plane containing the three ear and mouth reference point (M, RE and LE) and align the center of the ear piece with the line RE-LE.
 - ii) To move the device towards the phantom with the ear piece aligned with the line LE-RE until the phone touched the ear. While maintaining the device in the reference plane and maintaining the phone contact with the ear, move the bottom of the phone until any point on the front side is in contact with the cheek of the phantom or until contact with the ear is lost (see Fig. 9.1).
- 2) “Tilted Position”
 - i) To position the device in the “cheek” position described above.
 - ii) While maintaining the device the reference plane described above and pivoting against the ear, move it outward away from the mouth by an angle of 15 degrees or until contact with the ear is lost (see Fig. 9.2).
- 3) “Body Worn”
 - i) To position the device parallel to the phantom surface.
 - ii) To adjust the phone parallel to the flat phantom.
 - iii) To adjust the distance between the EUT surface and the flat phantom to 1.5 cm.

Remark: Please refer to Appendix F for the test setup photos.

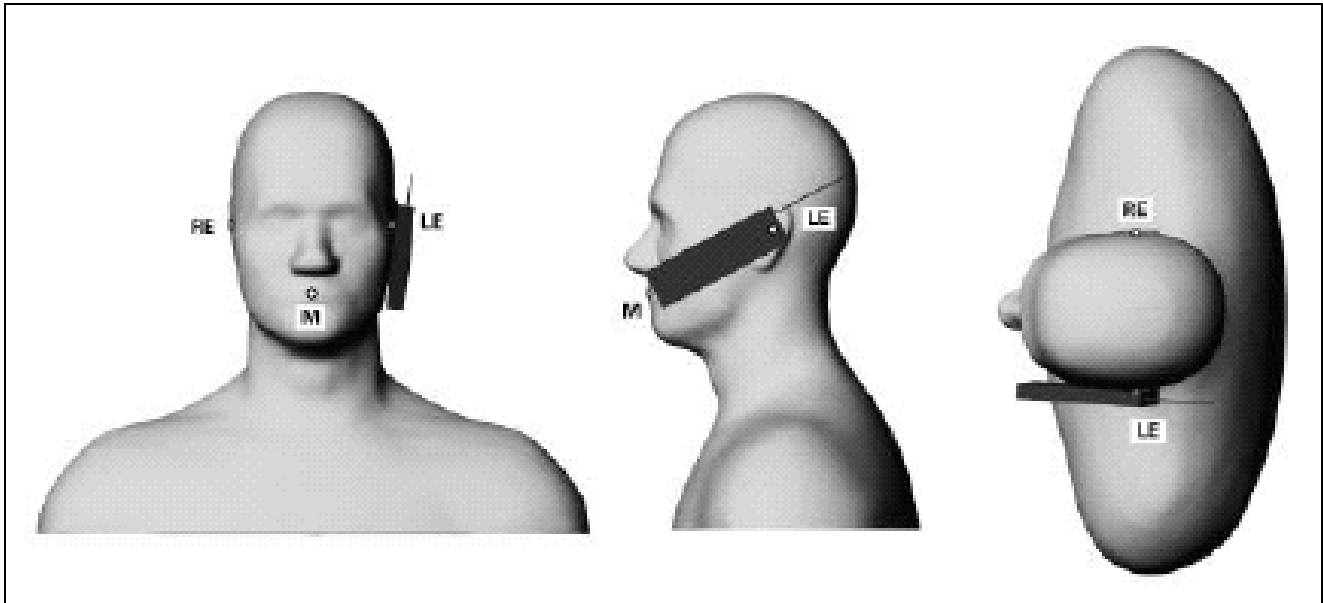


Fig. 9.1 Phone Position 1, “Cheek” or “Touch” Position. The reference points for the right ear (RE), left ear (LE) and mouth (M), which define the plane for phone positioning, are indicated.

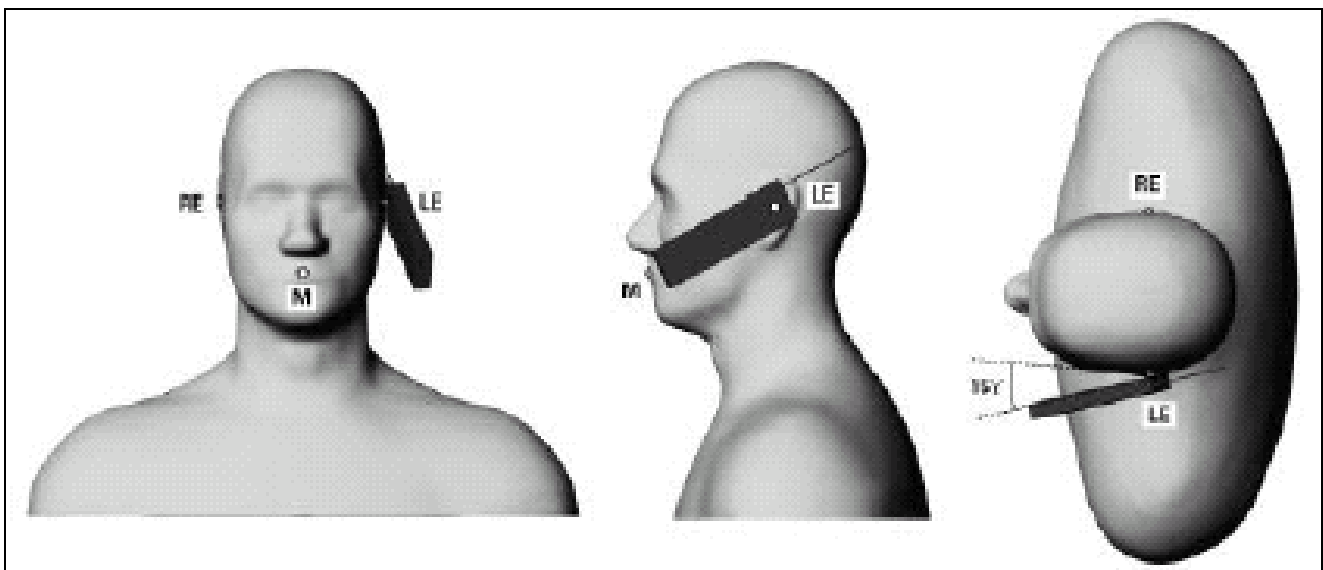


Fig. 9.2 Phone Position 2, “Tilted Position”. The reference point for the right ear (RE), left ear (LE) and mouth (M), which define the plane for phone positioning, are indicated.

10. Measurement Procedures

The measurement procedures are as follows:

- Linking DUT with base station emulator CMU200 in middle channel
- Setting CMU200 to allow DUT to radiate maximum output power
- Measuring output power through RF cable and power meter
- Placing the DUT in the positions described in the last section
- Setting scan area, grid size and other setting on the DASY5 software
- Taking data for the middle channel on each testing position
- Finding out the largest SAR result on these testing positions of each band
- Measuring output power and SAR results for the low and high channels in this worst case testing position

According to the IEEE P1528 draft standard, the recommended procedure for assessing the peak spatial-average SAR value consists of the following steps:

- Power reference measurement
- Area scan
- Zoom scan
- Power reference measurement

10.1 Spatial Peak SAR Evaluation

The procedure for spatial peak SAR evaluation has been implemented according to the IEEE1528-2003 standard. It can be conducted for 1g and 10g, as well as for user-specific masses. The DASY5 software includes all numerical procedures necessary to evaluate the spatial peak SAR value.

Base on the Draft: SCC-34, SC-2, WG-2-Computational Dosimetry, IEEE P1528/D1.2 (Recommended Practice for Determining the Peak Spatial-Average Specific Absorption Rate (SAR) in the Human Head from Wireless Communications Devices: Measurement Techniques), a new algorithm has been implemented. The spatial-peak SAR can be computed over any required mass.

The base for the evaluation is a "cube" measurement. The measured volume must include the 1g and 10g cubes with the highest averaged SAR values. For that purpose , the center of the measured volume is aligned to the interpolated peak SAR value of a previously performed area scan.

The entire evaluation of the spatial peak values is performed within the post-processing engine (SEMCAD). The system always gives the maximum values for the 1g and 10g cubes. The algorithm to find the cube with highest averaged SAR is divided into the following stages:

- extraction of the measured data (grid and values) from the Zoom Scan
- calculation of the SAR value at every measurement point based on all stored data (A/D values and measurement parameters)
- generation of a high-resolution mesh within the measured volume
- interpolation of all measured values from the measurement grid to the high-resolution grid
- extrapolation of the entire 3-D field distribution to the phantom surface over the distance from sensor to surface
- calculation of the averaged SAR within masses of 1g and 10g

10.2 Scan Procedures

First Area Scan is used to locate the approximate location(s) of the local peak SAR value(s). The measurement grid within an Area Scan is defined by the grid extent, grid step size and grid offset. Next, in order to determine the EM field distribution in a three-dimensional spatial extension, Zoom Scan is required. The Zoom Scan measures 7x7x7 points with step size 5, 5 and 5 mm. The Zoom Scan is performed around the highest E-field value to determine the averaged SAR-distribution over 1 g.

10.3 SAR Averaged Methods

In DASYS, the interpolation and extrapolation are both based on the modified Quadratic Shepard's method. The interpolation scheme combines a least-square fitted function method and a weighted average method which are the two basic types of computational interpolation and approximation.

Extrapolation routines are used to obtain SAR values between the lowest measurement points and the inner phantom surface. The extrapolation distance is determined by the surface detection distance and the probe sensor offset. The uncertainty increases with the extrapolation distance. To keep the uncertainty within 1% for the 1 g and 10 g cubes, the extrapolation distance should not be larger than 5 mm.

11. SAR Test Results

11.1 Conducted Power

Band	GSM 850 (dBm)			GSM 1900 (dBm)		
	128	189	251	512	661	810
Frequency (MHz)	824.2	836.4	848.8	1850.2	1880.0	1909.8
GSM	32.51	32.58	32.60	30.11	30.21	30.29
GPRS 8	32.52	32.61	32.63	30.10	30.21	30.30
GPRS 10	32.45	32.54	32.59	30.03	30.13	30.19
EGPRS 8	26.18	26.23	26.23	24.98	25.07	25.14
EGPRS 10	26.15	26.21	26.22	24.96	24.04	25.12

WCDMA SAR Test mode - Conducted Power							
Mode	Setup	Cell band (850)			PCS band (1900)		
		CH4132	CH4182	CH4233	CH9262	CH9400	CH9538
		826.4 (MHz)	836.4 (MHz)	846.6 (MHz)	1852.4 (MHz)	1880.0 (MHz)	1907.6 (MHz)
R99- WCDMA	RMC 12.2Kbps	23.35	23.43	23.33	23.38	23.42	23.31
	AMR 12.2Kbps	23.49	23.47	23.35	23.42	23.37	23.47
R5-HSDPA Only	HSDPA - subtest 1	23.31	23.40	23.30	23.35	23.29	23.18
	HSDPA - subtest 2	22.75	22.75	22.62	22.76	22.72	22.59
	HSDPA - subtest 3	22.66	22.76	22.57	22.85	22.81	22.69
	HSDPA - subtest 4	22.31	22.40	22.37	22.33	22.35	22.20
R6- HSPA (HSUPA&HSDPA)	HSUPA - subtest 1	22.61	22.62	22.15	22.11	22.48	22.80
	HSUPA - subtest 2	20.43	20.65	20.53	20.78	21.02	20.71
	HSUPA - subtest 3	21.41	21.53	21.46	21.27	21.71	21.63
	HSUPA - subtest 4	21.02	21.05	21.01	21.20	21.48	21.38
	HSUPA - subtest 5	22.53	22.40	22.42	22.43	22.40	23.00

11.2 Test Records for Head SAR Test

PDA	Battery	Battery Cover	EUT Slide	Position	Band	Ch.	Modulation Type	Measured 1g SAR (W/kg)	Measured 10g SAR (W/kg)	Power Drift
A	1	1	Off	RC	GSM850	189	GMSK	0.363	0.274	-0.141
B	2	1	Off	RC	GSM850	189	GMSK	0.371	0.269	-0.127
B	2	1	Off	RT	GSM850	189	GMSK	0.299	0.223	-0.00758
B	2	1	Off	LC	GSM850	189	GMSK	0.319	0.242	0.127
B	2	1	Off	LT	GSM850	189	GMSK	0.326	0.244	0.126
B	2	1	Off	RC	GSM850	128	GMSK	0.356	0.263	-0.162
B	2	1	Off	RC	GSM850	251	GMSK	0.255	0.188	-0.038
B	2	1	Off	RC	GSM1900	661	GMSK	0.506	0.34	0.192
B	2	1	Off	RT	GSM1900	661	GMSK	0.465	0.267	-0.146
B	2	1	Off	LC	GSM1900	661	GMSK	0.694	0.401	-0.166
B	2	1	Off	LT	GSM1900	661	GMSK	0.411	0.248	0.075
B	2	1	Off	LC	GSM1900	512	GMSK	0.674	0.404	-0.124
B	2	1	Off	LC	GSM1900	810	GMSK	0.526	0.307	-0.141
B	2	1	Off	RC	WCDMA850	4182	QPSK	0.268	0.189	-0.066
B	2	1	Off	RT	WCDMA850	4182	QPSK	0.246	0.184	0.033
B	2	1	Off	LC	WCDMA850	4182	QPSK	0.194	0.15	-0.133
B	2	1	Off	LT	WCDMA850	4182	QPSK	0.211	0.158	0.148
B	2	1	Off	RC	WCDMA850	4132	QPSK	0.153	0.118	-0.115
B	2	1	Off	RC	WCDMA850	4233	QPSK	0.166	0.127	-0.021
B	2	1	Off	RC	WCDMA1900	9400	QPSK	0.872	0.547	0.104
B	2	1	Off	RT	WCDMA1900	9400	QPSK	0.603	0.352	-0.077
B	2	1	Off	LC	WCDMA1900	9400	QPSK	0.611	0.326	-0.115
B	2	1	Off	LT	WCDMA1900	9400	QPSK	0.51	0.315	0.159
B	2	1	Off	RC	WCDMA1900	9262	QPSK	0.516	0.334	-0.056
B	2	1	Off	RC	WCDMA1900	9538	QPSK	0.802	0.507	0.118
B	2	1	Right	RC	WCDMA1900	9400	QPSK	0.580	0.365	0.077

Remark:

1. RC stands for right cheek.
2. RT stands for right tilted.
3. LC stands for left cheek.
4. LT stands for left tilted.



11.3 Test Records for Body SAR Test

PDA	Battery	Battery Cover	Ear-phone	EUT Slide	Position	Band	Ch.	Mode	Modulation Type	Measured 1g SAR (W/kg)	Measured 10g SAR (W/kg)	Power Drift
A	1	1	1	Off	Bottom with 1.5cm	GSM850	189	GPRS10	GMSK	0.788	0.563	-0.122
B	2	2	2	Off	Bottom with 1.5cm	GSM850	189	GPRS10	GMSK	0.539	0.385	-0.163
A	1	1	1	Off	Face with 1.5cm	GSM850	189	GPRS10	GMSK	0.181	0.135	-0.191
A	1	1	1	Off	Bottom with 1.5cm	GSM850	189	EDGE10	GMSK	0.189	0.134	0.064
A	1	1	1	Off	Bottom with 1.5cm	GSM850	128	GPRS10	GMSK	0.762	0.55	-0.102
A	1	1	1	Off	Bottom with 1.5cm	GSM850	251	GPRS10	GMSK	0.619	0.455	0.074
A	1	1	1	Off	Face with 1.5cm	GSM1900	661	GPRS10	GMSK	0.434	0.273	0.124
A	1	1	1	Off	Bottom with 1.5cm	GSM1900	661	GPRS10	GMSK	1.23	0.702	-0.096
A	1	1	1	Off	Bottom with 1.5cm	GSM1900	661	EDGE10	GMSK	0.373	0.214	0.178
A	1	1	1	Off	Bottom with 1.5cm	GSM1900	512	GPRS10	GMSK	1.16	0.666	-0.027
A	1	1	1	Off	Bottom with 1.5cm	GSM1900	810	GPRS10	GMSK	0.963	0.551	0.075
A	1	2	1	Off	Bottom with 1.5cm	GSM1900	512	GPRS10	GMSK	1.23	0.681	-0.058
A	1	2	1	Off	Bottom with 1.5cm	GSM1900	661	GPRS10	GMSK	1.34	0.737	-0.132
A	1	2	1	Off	Bottom with 1.5cm	GSM1900	810	GPRS10	GMSK	1.06	0.581	-0.075
A	1	2	1	Right	Bottom with 1.5cm	GSM1900	661	GPRS10	GMSK	0.651	0.352	-0.132
A	1	1	1	Off	Face with 1.5cm	WCDMA850	4182	12.2K	QPSK	0.09	0.067	0.075
A	1	1	1	Off	Bottom with 1.5cm	WCDMA850	4182	12.2K	QPSK	0.37	0.266	0.058
A	1	1	1	Off	Bottom with 1.5cm	WCDMA850	4182	HSUPA	QPSK	0.305	0.219	0.00191
A	1	1	1	Off	Bottom with 1.5cm	WCDMA850	4132	12.2K	QPSK	0.342	0.246	-0.131
A	1	1	1	Off	Bottom with 1.5cm	WCDMA850	4233	12.2K	QPSK	0.354	0.253	0.054
A	1	1	1	Off	Face with 1.5cm	WCDMA1900	9400	12.2K	QPSK	0.324	0.205	0.109
A	1	1	1	Off	Bottom with 1.5cm	WCDMA1900	9400	12.2K	QPSK	0.918	0.522	-0.0019
A	1	1	1	Off	Bottom with 1.5cm	WCDMA1900	9400	HSUPA	QPSK	0.735	0.418	0.054
A	1	1	1	Off	Bottom with 1.5cm	WCDMA1900	9262	12.2K	QPSK	0.747	0.424	0.029
A	1	1	1	Off	Bottom with 1.5cm	WCDMA1900	9538	12.2K	QPSK	0.807	0.459	0.053

Remark: Test Engineer : Robert Liu, Gordon, and A-Rod Chen



12. References

- [1] FCC 47 CFR Part 2 “Frequency Allocations and Radio Treaty Matters; General Rules and Regulations”
- [2] IEEE Std. P1528-2003, “Recommended Practice for Determining the Peak Spatial-Average Specific Absorption Rate (SAR) in the Human Head from Wireless Communications Devices: Measurement Techniques”, April 21, 2003
- [3] Supplement C (Edition 01-01) to OET Bulletin 65 (Edition 97-01), “Additional Information for Evaluating Compliance of Mobile and Portable Devices with FCC Limits for Human Exposure to RF Emissions”, June 2001
- [4] IEEE Std. C95.3-2002, “IEEE Recommended Practice for the Measurement of Potentially Hazardous Electromagnetic Fields-RF and Microwave”, 2002
- [5] IEEE Std. C95.1-1999, “IEEE Standard for Safety Levels with Respect to Human Exposure to Radio Frequency Electromagnetic Fields, 3 kHz to 300 GHz”, 1999
- [6] Robert J. Renka, “Multivariate Interpolation Of Large Sets Of Scattered Data”, University of North Texas ACM Transactions on Mathematical Software, vol. 14, no. 2, June 1988, pp. 139-148
- [7] DASY5 System Handbook
- [8] 941225 D01 SAR test for 3G devices v02, SAR Measurement Procedures for 3G Devices CDMA 2000/Ev-Do/WCDMA/HSDPA/HSPA Oct. 2007 Laboratory Division Office of Engineering and Technology Federal Communications Commission
- [9] TS 34.121 Universal Mobile Telecommunications System (UMTS); Terminal Conformance Specification, Radio Transmission and Reception (FDD)
- [10] Operation Guide for HSUPA Test Set-up According to 3GPP TS 34.121 written by Rohde & Schwarz RCS-07 12-0053

Appendix A - System Performance Check Data

Test Laboratory: Sporton International Inc. SAR/HAC Testing Lab

Date: 2008/6/14

System Check_Head_835MHz

DUT: Dipole 835 MHz

Communication System: CW; Frequency: 835 MHz; Duty Cycle: 1:1

Medium: HSL_850 Medium parameters used: $f = 835 \text{ MHz}$; $\sigma = 0.908 \text{ mho/m}$; $\epsilon_r = 40.6$; $\rho = 1000 \text{ kg/m}^3$

Ambient Temperature : 22.3 °C; Liquid Temperature : 21.8 °C

DASY5 Configuration:

- Probe: ET3DV6 - SN1788; ConvF(6.54, 6.54, 6.54); Calibrated: 2007/9/26
- Sensor-Surface: 4mm (Mechanical Surface Detection)
- Electronics: DAE3 Sn577; Calibrated: 2007/11/16
- Phantom: SAM-A; Type: QD 000 P40 C; Serial: TP-1303
- Measurement SW: DASY5, V5.0 Build 91; SEMCAD X Version 12.4 Build 52

Pin=100mW/Area Scan (61x61x1): Measurement grid: dx=15mm, dy=15mm

Maximum value of SAR (interpolated) = 0.995 mW/g

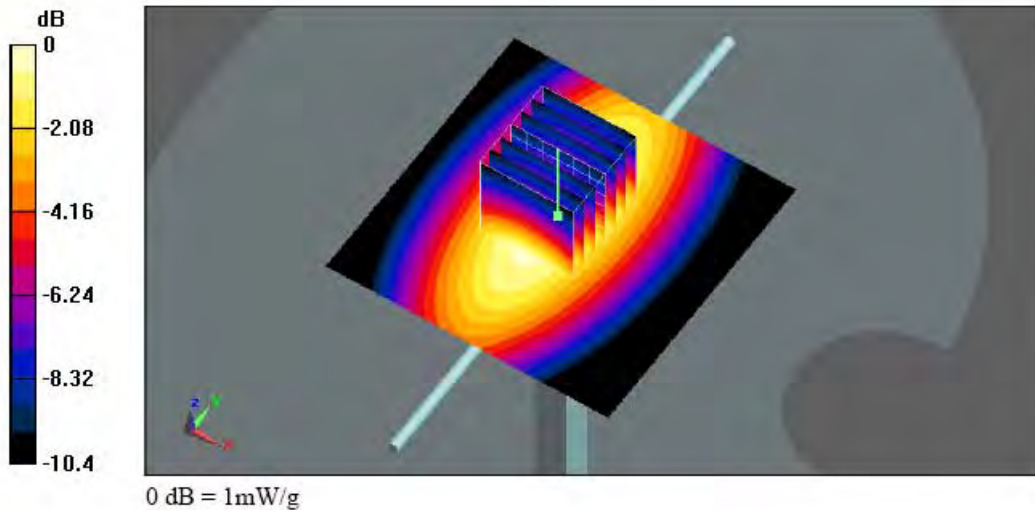
Pin=100mW/Zoom Scan (7x7x7)/Cube 0: Measurement grid: dx=5mm, dy=5mm, dz=5mm

Reference Value = 33.8 V/m; Power Drift = 0.023 dB

Peak SAR (extrapolated) = 1.38 W/kg

SAR(1 g) = 0.927 mW/g; SAR(10 g) = 0.606 mW/g

Maximum value of SAR (measured) = 1 mW/g



Test Laboratory: Sporton International Inc. SAR/HAC Testing Lab

Date: 2008/6/15

System Check_Body_835MHz

DUT: Dipole 835 MHz

Communication System: CW; Frequency: 835 MHz; Duty Cycle: 1:1

Medium: MSL_850 Medium parameters used: $f = 835 \text{ MHz}$; $\sigma = 0.961 \text{ mho/m}$; $\epsilon_r = 56.3$; $\rho = 1000 \text{ kg/m}^3$

Ambient Temperature : 22.4 °C; Liquid Temperature : 21.6 °C

DASY5 Configuration:

- Probe: ET3DV6 - SN1788; ConvF(6.37, 6.37, 6.37); Calibrated: 2007/9/26
- Sensor-Surface: 4mm (Mechanical Surface Detection)
- Electronics: DAE3 Sn577; Calibrated: 2007/11/16
- Phantom: SAM-A; Type: QD 000 P40 C; Serial: TP-1303
- Measurement SW: DASY5, V5.0 Build 91; SEMCAD X Version 12.4 Build 52

Pin=100mW/Area Scan (61x61x1): Measurement grid: $dx=15\text{mm}$, $dy=15\text{mm}$

Maximum value of SAR (interpolated) = 1.11 mW/g

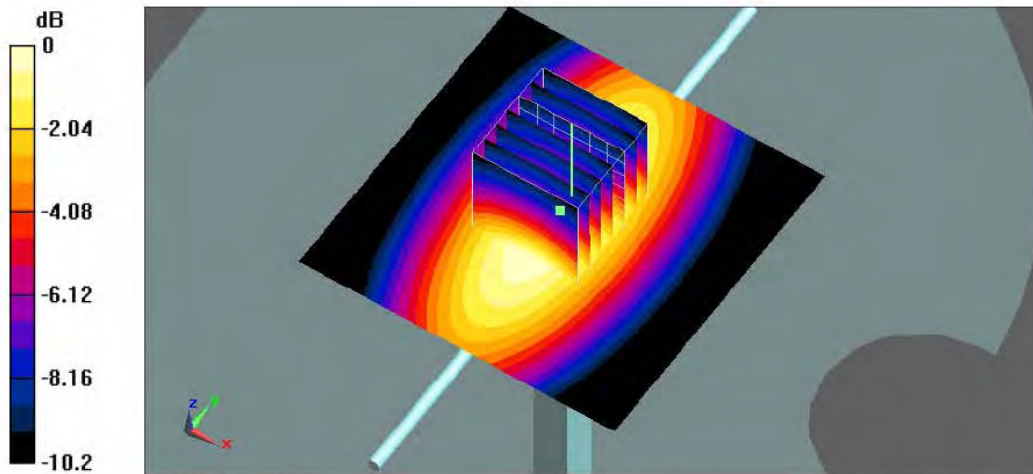
Pin=100mW/Zoom Scan (7x7x7)/Cube 0: Measurement grid: $dx=5\text{mm}$, $dy=5\text{mm}$, $dz=5\text{mm}$

Reference Value = 35.3 V/m; Power Drift = -0.012 dB

Peak SAR (extrapolated) = 1.47 W/kg

SAR(1 g) = 1.02 mW/g; SAR(10 g) = 0.675 mW/g

Maximum value of SAR (measured) = 1.1 mW/g



0 dB = 1.1mW/g

Test Laboratory: Sporton International Inc. SAR/HAC Testing Lab

Date: 2008/6/14

System Check_Head_1900MHz

DUT: Dipole 1900 MHz

Communication System: CW; Frequency: 1900 MHz; Duty Cycle: 1:1

Medium: HSL_1900 Medium parameters used: $f = 1900 \text{ MHz}$; $\sigma = 1.42 \text{ mho/m}$; $\epsilon_r = 38.5$; $\rho = 1000 \text{ kg/m}^3$

Ambient Temperature : 22.4 °C; Liquid Temperature : 21.5 °C

DASY5 Configuration:

- Probe: ET3DV6 - SN1788; ConvF(5.28, 5.28, 5.28); Calibrated: 2007/9/26
- Sensor-Surface: 4mm (Mechanical Surface Detection)
- Electronics: DAE3 Sn577; Calibrated: 2007/11/16
- Phantom: SAM with CRP; Type: SAM; Serial: TP-1446
- Measurement SW: DASY5, V5.0 Build 91; SEMCAD X Version 12.4 Build 52

Pin=100mW/Area Scan (91x91x1): Measurement grid: dx=10mm, dy=10mm

Maximum value of SAR (interpolated) = 4.46 mW/g

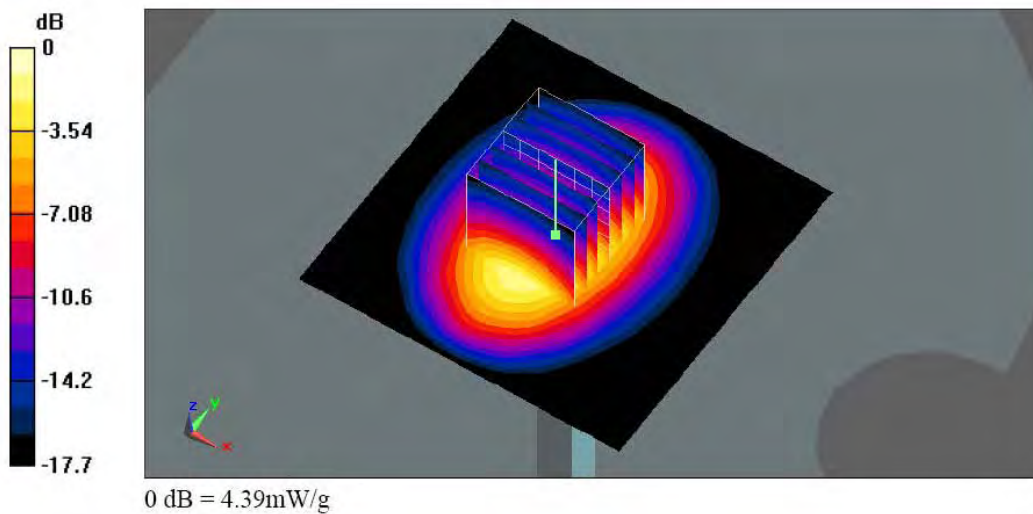
Pin=100mW/Zoom Scan (7x7x7)/Cube 0: Measurement grid: dx=5mm, dy=5mm, dz=5mm

Reference Value = 57.9 V/m; Power Drift = -0.033 dB

Peak SAR (extrapolated) = 6.98 W/kg

SAR(1 g) = 3.88 mW/g; SAR(10 g) = 2.02 mW/g

Maximum value of SAR (measured) = 4.39 mW/g



Test Laboratory: Sporton International Inc. SAR/HAC Testing Lab

Date: 2008/7/23

System Check_Head_1900MHz

DUT: Dipole 1900 MHz

Communication System: CW; Frequency: 1900 MHz; Duty Cycle: 1:1

Medium: HSL_1900 Medium parameters used: $f = 1900$ MHz; $\sigma = 1.42$ mho/m; $\epsilon_r = 41.9$; $\rho = 1000$ kg/m³

Ambient Temperature : 22.5 °C; Liquid Temperature : 21.5 °C

DASY5 Configuration:

- Probe: ET3DV6 - SN1788; ConvF(5.28, 5.28, 5.28); Calibrated: 2007/9/26
- Sensor-Surface: 4mm (Mechanical Surface Detection)
- Electronics: DAE3 Sn577; Calibrated: 2007/11/16
- Phantom: SAM with CRP; Type: SAM; Serial: TP-1446
- Measurement SW: DASY5, V5.0 Build 91; SEMCAD X Version 12.4 Build 52

Pin=100mW/Area Scan (61x61x1): Measurement grid: dx=15mm, dy=15mm

Maximum value of SAR (interpolated) = 4.48 mW/g

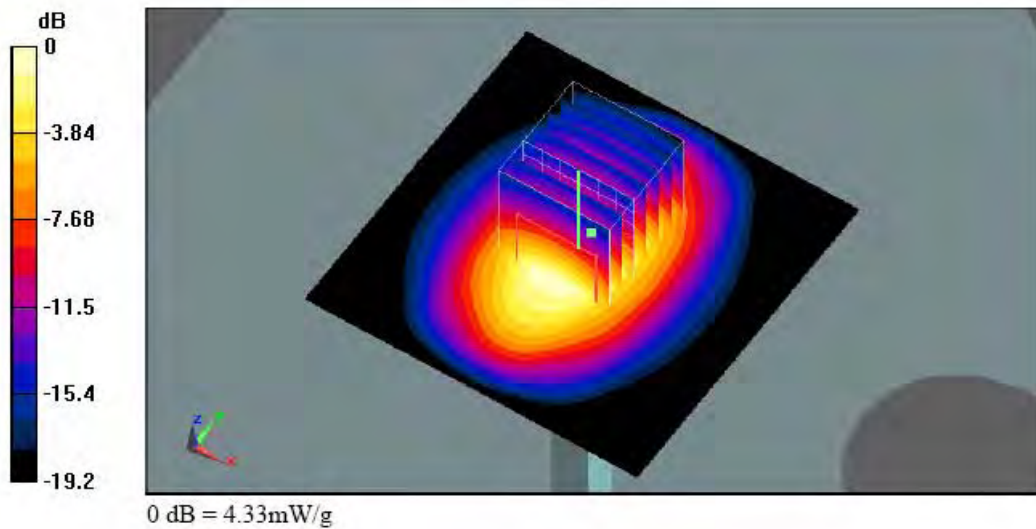
Pin=100mW/Zoom Scan (7x7x7)/Cube 0: Measurement grid: dx=5mm, dy=5mm, dz=5mm

Reference Value = 57.6 V/m; Power Drift = -0.025 dB

Peak SAR (extrapolated) = 6.93 W/kg

SAR(1 g) = 3.84 mW/g; SAR(10 g) = 2 mW/g

Maximum value of SAR (measured) = 4.33 mW/g



Test Laboratory: Sporton International Inc. SAR/HAC Testing Lab

Date: 2008/6/15

System Check_Body_1900MHz

DUT: Dipole 1900 MHz

Communication System: CW; Frequency: 1900 MHz; Duty Cycle: 1:1

Medium: MSL_1900 Medium parameters used: $f = 1900$ MHz; $\sigma = 1.52$ mho/m; $\epsilon_r = 51$; $\rho = 1000$ kg/m³

Ambient Temperature : 22.5 °C; Liquid Temperature : 21.4 °C

DASY5 Configuration:

- Probe: ET3DV6 - SN1788; ConvF(4.75, 4.75, 4.75); Calibrated: 2007/9/26
- Sensor-Surface: 4mm (Mechanical Surface Detection)
- Electronics: DAE3 Sn577; Calibrated: 2007/11/16
- Phantom: SAM with CRP; Type: SAM; Serial: TP-1446
- Measurement SW: DASY5, V5.0 Build 91; SEMCAD X Version 12.4 Build 52

Pin=100mW/Area Scan (91x91x1): Measurement grid: dx=10mm, dy=10mm

Maximum value of SAR (interpolated) = 4.87 mW/g

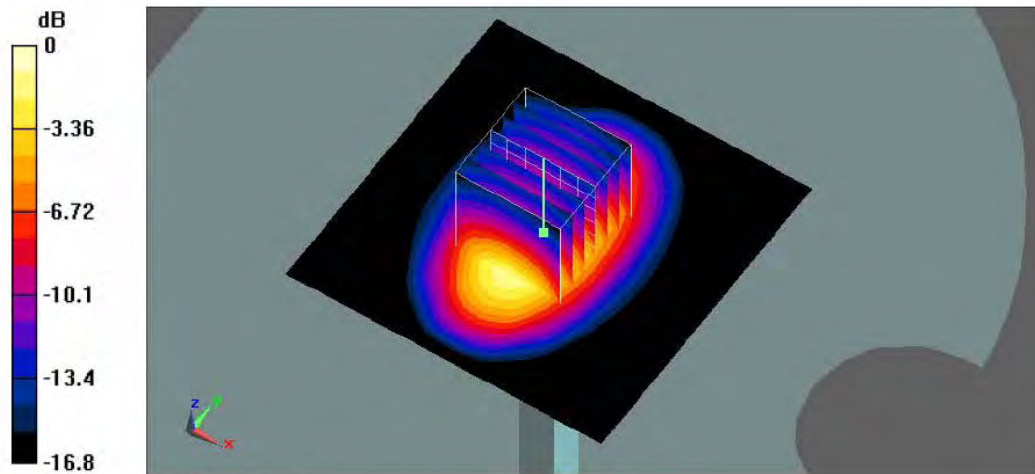
Pin=100mW/Zoom Scan (7x7x7)/Cube 0: Measurement grid: dx=5mm, dy=5mm, dz=5mm

Reference Value = 59.2 V/m; Power Drift = 0.015 dB

Peak SAR (extrapolated) = 7.12 W/kg

SAR(1 g) = 4.18 mW/g; SAR(10 g) = 2.21 mW/g

Maximum value of SAR (measured) = 4.75 mW/g



0 dB = 4.75mW/g

Test Laboratory: Sporton International Inc. SAR/HAC Testing Lab

Date: 2008/7/2

System Check_Body_1900MHz

DUT: Dipole 1900 MHz

Communication System: CW; Frequency: 1900 MHz; Duty Cycle: 1:1

Medium: MSL_1900 Medium parameters used: $f = 1900 \text{ MHz}$; $\sigma = 1.47 \text{ mho/m}$; $\epsilon_r = 51.3$; $\rho = 1000 \text{ kg/m}^3$

Ambient Temperature : 22.5 °C; Liquid Temperature : 21.5 °C

DASY5 Configuration:

- Probe: ET3DV6 - SN1788; ConvF(4.75, 4.75, 4.75); Calibrated: 2007/9/26
- Sensor-Surface: 4mm (Mechanical Surface Detection)
- Electronics: DAE3 Sn577; Calibrated: 2007/11/16
- Phantom: SAM with CRP; Type: SAM; Serial: TP-1446
- Measurement SW: DASY5, V5.0 Build 91; SEMCAD X Version 12.4 Build 52

Pin=100mW/Area Scan (91x91x1): Measurement grid: dx=10mm, dy=10mm

Maximum value of SAR (interpolated) = 4.7 mW/g

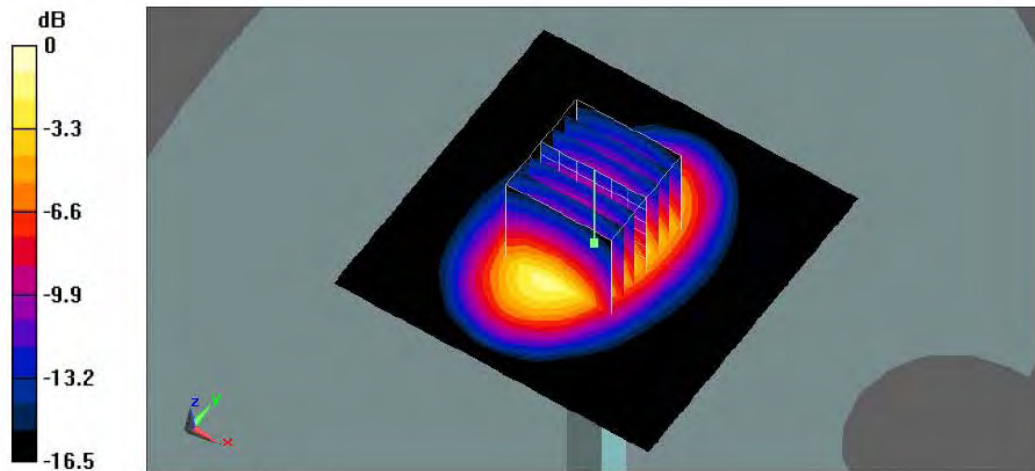
Pin=100mW/Zoom Scan (7x7x7)/Cube 0: Measurement grid: dx=5mm, dy=5mm, dz=5mm

Reference Value = 59.6 V/m; Power Drift = 0.00448 dB

Peak SAR (extrapolated) = 6.97 W/kg

SAR(1 g) = 4.08 mW/g; SAR(10 g) = 2.17 mW/g

Maximum value of SAR (measured) = 4.62 mW/g



0 dB = 4.62mW/g

Test Laboratory: Sporton International Inc. SAR/HAC Testing Lab

Date: 2008/7/23

System Check_Body_1900MHz

DUT: Dipole 1900 MHz

Communication System: CW; Frequency: 1900 MHz; Duty Cycle: 1:1

Medium: MSL_1900 Medium parameters used: $f = 1900 \text{ MHz}$; $\sigma = 1.52 \text{ mho/m}$; $\epsilon_r = 52.4$; $\rho = 1000 \text{ kg/m}^3$

Ambient Temperature : 22.5 °C; Liquid Temperature : 21.6 °C

DASY5 Configuration:

- Probe: ET3DV6 - SN1788; ConvF(4.75, 4.75, 4.75); Calibrated: 2007/9/26
- Sensor-Surface: 4mm (Mechanical Surface Detection)
- Electronics: DAE3 Sn577; Calibrated: 2007/11/16
- Phantom: SAM with CRP; Type: SAM; Serial: TP-1446
- Measurement SW: DASY5, V5.0 Build 91; SEMCAD X Version 12.4 Build 52

Pin=100mW/Area Scan (91x91x1): Measurement grid: dx=10mm, dy=10mm

Maximum value of SAR (interpolated) = 4.77 mW/g

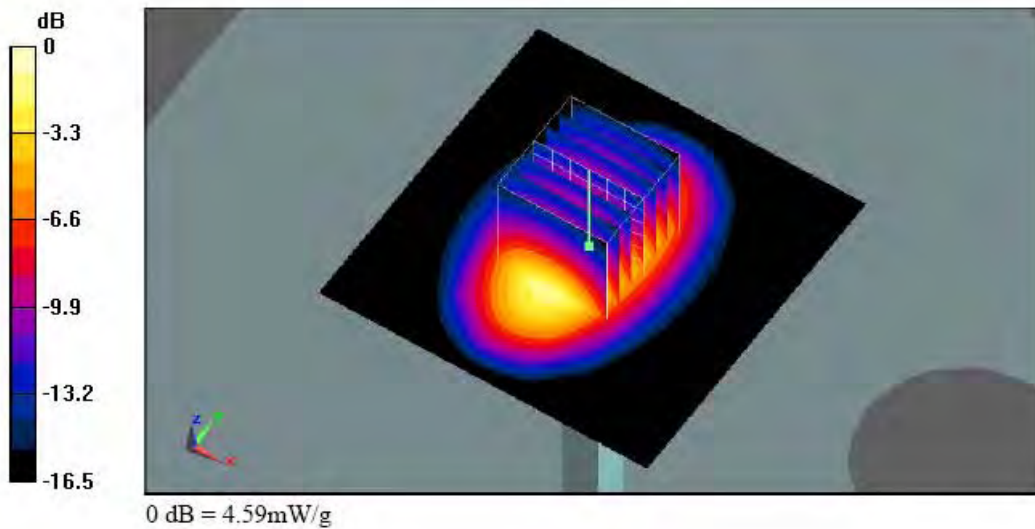
Pin=100mW/Zoom Scan (7x7x7)/Cube 0: Measurement grid: dx=5mm, dy=5mm, dz=5mm

Reference Value = 59 V/m; Power Drift = -0.002 dB

Peak SAR (extrapolated) = 6.91 W/kg

SAR(1 g) = 4.06 mW/g; SAR(10 g) = 2.17 mW/g

Maximum value of SAR (measured) = 4.59 mW/g



Appendix B - SAR Measurement Data

Test Laboratory: Sporton International Inc. SAR/HAC Testing Lab

Date: 2008/6/14

Right Cheek_GSM850 Ch189_Battery2_PDA2

DUT: 830416-03

Communication System: GSM850; Frequency: 836.4 MHz; Duty Cycle: 1:8.3

Medium: HSL_850 Medium parameters used : $f = 836.4$ MHz; $\sigma = 0.909$ mho/m; $\epsilon_r = 40.6$; $\rho = 1000$ kg/m³

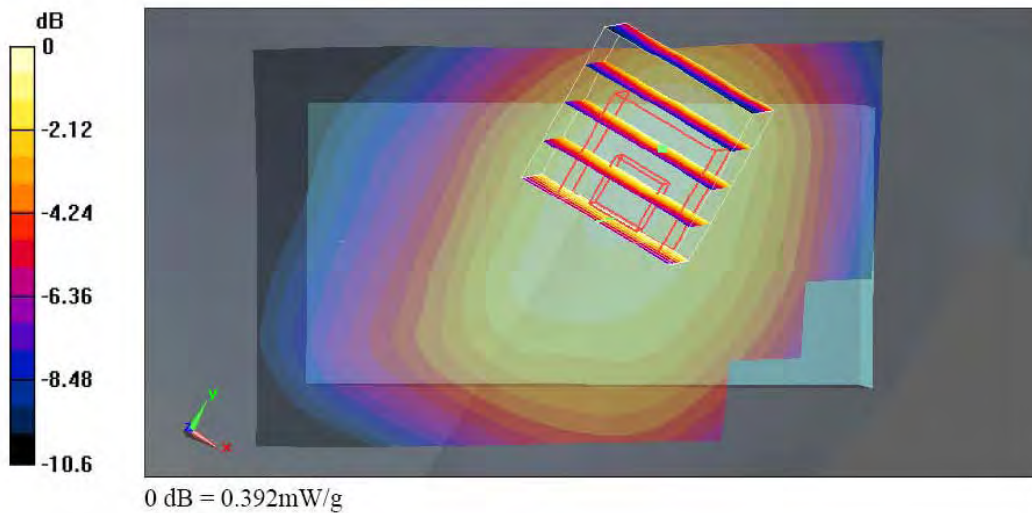
Ambient Temperature : 22.3 °C ; Liquid Temperature : 21.8 °C

DASY5 Configuration:

- Probe: ET3DV6 - SN1788; ConvF(6.54, 6.54, 6.54); Calibrated: 2007/9/26
- Sensor-Surface: 4mm (Mechanical Surface Detection)
- Electronics: DAE3 Sn577; Calibrated: 2007/11/16
- Phantom: SAM-A: Type: QD 000 P40 C: Serial: TP-1303
- Measurement SW: DASY5, V5.0 Build 91; SEMCAD X Version 12.4 Build 52

Ch189/Area Scan (51x81x1): Measurement grid: dx=15mm, dy=15mm
Maximum value of SAR (interpolated) = 0.388 mW/g

Ch189/Zoom Scan (5x5x7)/Cube 0: Measurement grid: dx=8mm, dy=8mm, dz=5mm
Reference Value = 8.94 V/m; Power Drift = -0.127 dB
Peak SAR (extrapolated) = 0.494 W/kg
SAR(1 g) = 0.371 mW/g; SAR(10 g) = 0.269 mW/g
Maximum value of SAR (measured) = 0.392 mW/g



Test Laboratory: Sporton International Inc. SAR/HAC Testing Lab

Date: 2008/6/14

Right Tilted_GSM850 Ch189_Battery2_PDA2

DUT: 830416-03

Communication System: GSM850; Frequency: 836.4 MHz; Duty Cycle: 1:8.3

Medium: HSL_850 Medium parameters used : f = 836.4 MHz; $\sigma = 0.909$ mho/m; $\epsilon_r = 40.6$; $\rho = 1000$ kg/m³

Ambient Temperature : 22.3 °C; Liquid Temperature : 21.8 °C

DASY5 Configuration:

- Probe: ET3DV6 - SN1788; ConvF(6.54, 6.54, 6.54); Calibrated: 2007/9/26
- Sensor-Surface: 4mm (Mechanical Surface Detection)
- Electronics: DAE3 Sn577; Calibrated: 2007/11/16
- Phantom: SAM-A; Type: QD 000 P40 C; Serial: TP-1303
- Measurement SW: DASY5, V5.0 Build 91; SEMCAD X Version 12.4 Build 52

Ch189/Area Scan (51x81x1): Measurement grid: dx=15mm, dy=15mm

Maximum value of SAR (interpolated) = 0.311 mW/g

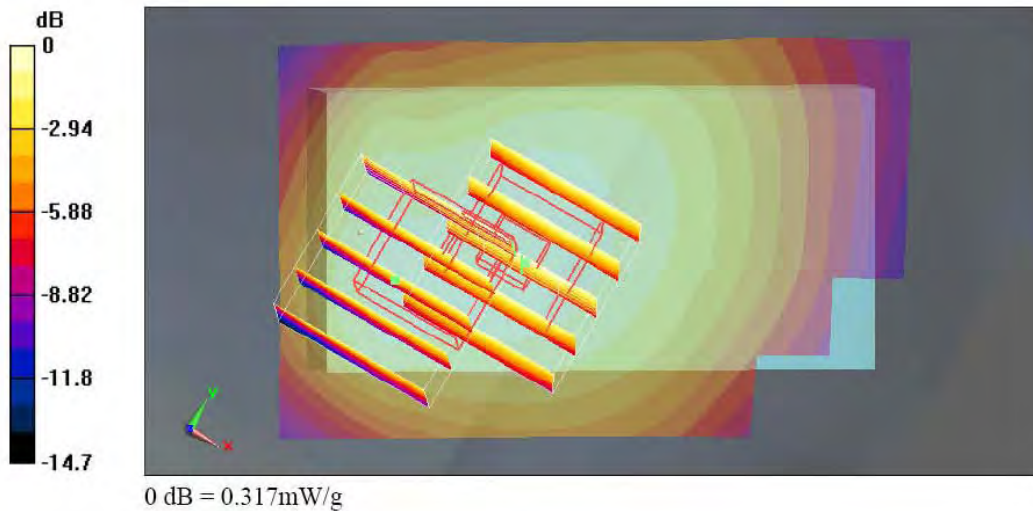
Ch189/Zoom Scan (5x5x7)/Cube 0: Measurement grid: dx=8mm, dy=8mm, dz=5mm

Reference Value = 16.8 V/m; Power Drift = -0.00758 dB

Peak SAR (extrapolated) = 0.379 W/kg

SAR(1 g) = 0.299 mW/g; SAR(10 g) = 0.223 mW/g

Maximum value of SAR (measured) = 0.317 mW/g



Test Laboratory: Sporton International Inc. SAR/HAC Testing Lab

Date: 2008/6/14

Left Cheek_GSM850 Ch189_Battery2_PDA2

DUT: 830416-03

Communication System: GSM850; Frequency: 836.4 MHz; Duty Cycle: 1:8.3

Medium: HSL_850 Medium parameters used : f = 836.4 MHz; $\sigma = 0.909$ mho/m; $\epsilon_r = 40.6$; $\rho = 1000$ kg/m³

Ambient Temperature : 22.4 °C; Liquid Temperature : 21.8 °C

DASY5 Configuration:

- Probe: ET3DV6 - SN1788; ConvF(6.54, 6.54, 6.54); Calibrated: 2007/9/26
- Sensor-Surface: 4mm (Mechanical Surface Detection)
- Electronics: DAE3 Sn577; Calibrated: 2007/11/16
- Phantom: SAM-A; Type: QD 000 P40 C; Serial: TP-1303
- Measurement SW: DASY5, V5.0 Build 91; SEMCAD X Version 12.4 Build 52

Ch189/Area Scan (51x81x1): Measurement grid: dx=15mm, dy=15mm

Maximum value of SAR (interpolated) = 0.338 mW/g

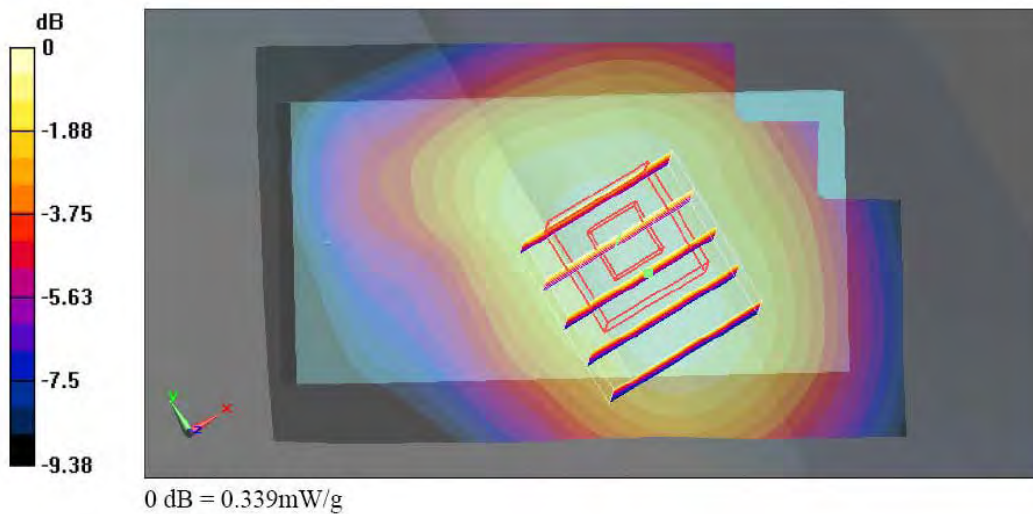
Ch189/Zoom Scan (5x5x7)/Cube 0: Measurement grid: dx=8mm, dy=8mm, dz=5mm

Reference Value = 9.11 V/m; Power Drift = 0.127 dB

Peak SAR (extrapolated) = 0.389 W/kg

SAR(1 g) = 0.319 mW/g; SAR(10 g) = 0.242 mW/g

Maximum value of SAR (measured) = 0.339 mW/g



Test Laboratory: Sporton International Inc. SAR/HAC Testing Lab

Date: 2008/6/14

Left Tilted_GSM850 Ch189_Battery2_PDA2

DUT: 830416-03

Communication System: GSM850; Frequency: 836.4 MHz; Duty Cycle: 1:8.3

Medium: HSL_850 Medium parameters used : f = 836.4 MHz; $\sigma = 0.909$ mho/m; $\epsilon_r = 40.6$; $\rho = 1000$ kg/m³

Ambient Temperature : 22.4 °C ; Liquid Temperature : 21.8 °C

DASY5 Configuration:

- Probe: ET3DV6 - SN1788; ConvF(6.54, 6.54, 6.54); Calibrated: 2007/9/26
- Sensor-Surface: 4mm (Mechanical Surface Detection)
- Electronics: DAE3 Sn577; Calibrated: 2007/11/16
- Phantom: SAM-A; Type: QD 000 P40 C; Serial: TP-1303
- Measurement SW: DASY5, V5.0 Build 91; SEMCAD X Version 12.4 Build 52

Ch189/Area Scan (51x81x1): Measurement grid: dx=15mm, dy=15mm

Maximum value of SAR (interpolated) = 0.357 mW/g

Ch189/Zoom Scan (5x5x7)/Cube 1: Measurement grid: dx=8mm, dy=8mm, dz=5mm

Reference Value = 17.6 V/m; Power Drift = 0.126 dB

Peak SAR (extrapolated) = 0.413 W/kg

SAR(1 g) = 0.326 mW/g; SAR(10 g) = 0.244 mW/g

Maximum value of SAR (measured) = 0.341 mW/g

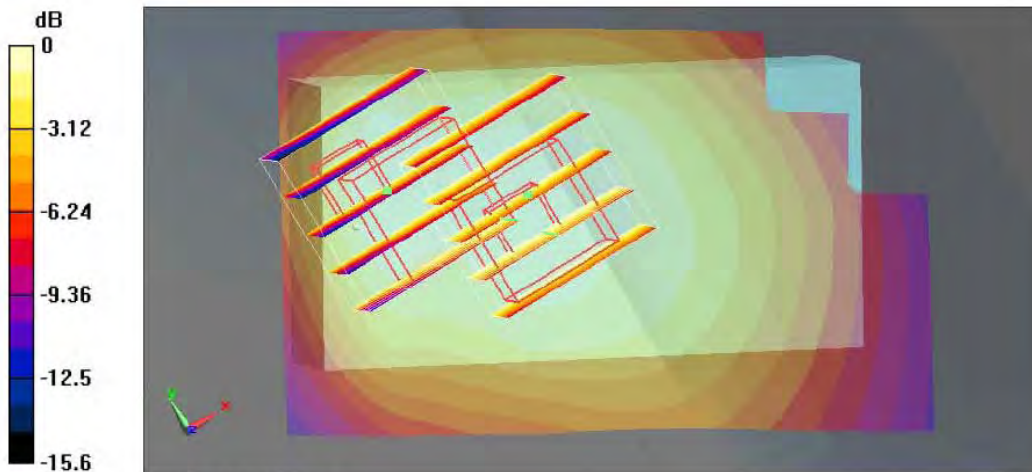
Ch189/Zoom Scan (5x5x7)/Cube 0: Measurement grid: dx=8mm, dy=8mm, dz=5mm

Reference Value = 17.6 V/m; Power Drift = 0.126 dB

Peak SAR (extrapolated) = 0.755 W/kg

SAR(1 g) = 0.307 mW/g; SAR(10 g) = 0.204 mW/g

Maximum value of SAR (measured) = 0.339 mW/g



0 dB = 0.339mW/g

Test Laboratory: Sporton International Inc. SAR/HAC Testing Lab

Date: 2008/6/14

Right Cheek_GSM1900 Ch661_Battery2_PDA2

DUT: 830416-03

Communication System: PCS; Frequency: 1880 MHz; Duty Cycle: 1:8.3

Medium: HSL_1900 Medium parameters used: $f = 1880$ MHz; $\sigma = 1.4$ mho/m; $\epsilon_r = 38.5$; $\rho = 1000$ kg/m³

Ambient Temperature : 22.4 °C; Liquid Temperature : 21.5 °C

DASY5 Configuration:

- Probe: ET3DV6 - SN1788; ConvF(5.28, 5.28, 5.28); Calibrated: 2007/9/26
- Sensor-Surface: 4mm (Mechanical Surface Detection)
- Electronics: DAE3 Sn577; Calibrated: 2007/11/16
- Phantom: SAM with CRP; Type: SAM; Serial: TP-1446
- Measurement SW: DASY5, V5.0 Build 91; SEMCAD X Version 12.4 Build 52

Ch661/Area Scan (51x81x1): Measurement grid: dx=15mm, dy=15mm

Maximum value of SAR (interpolated) = 0.561 mW/g

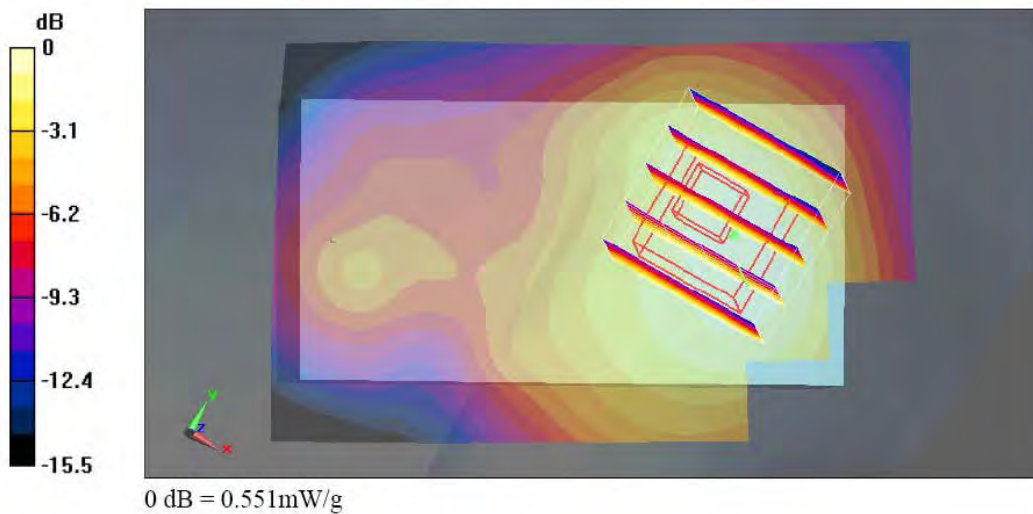
Ch661/Zoom Scan (5x5x7)/Cube 0: Measurement grid: dx=8mm, dy=8mm, dz=5mm

Reference Value = 12.2 V/m; Power Drift = 0.192 dB

Peak SAR (extrapolated) = 0.713 W/kg

SAR(1 g) = 0.506 mW/g; SAR(10 g) = 0.340 mW/g

Maximum value of SAR (measured) = 0.551 mW/g



Test Laboratory: Sporton International Inc. SAR/HAC Testing Lab

Date: 2008/6/14

Right Tilted_GSM1900 Ch661_Battery2_PDA2

DUT: 830416-03

Communication System: PCS; Frequency: 1880 MHz; Duty Cycle: 1:8.3

Medium: HSL_1900 Medium parameters used: $f = 1880 \text{ MHz}$; $\sigma = 1.4 \text{ mho/m}$; $\epsilon_r = 38.5$; $\rho = 1000 \text{ kg/m}^3$

Ambient Temperature : 22.4 °C; Liquid Temperature : 21.5 °C

DASY5 Configuration:

- Probe: ET3DV6 - SN1788; ConvF(5.28, 5.28, 5.28); Calibrated: 2007/9/26
- Sensor-Surface: 4mm (Mechanical Surface Detection)
- Electronics: DAE3 Sn577; Calibrated: 2007/11/16
- Phantom: SAM with CRP; Type: SAM; Serial: TP-1446
- Measurement SW: DASY5, V5.0 Build 91; SEMCAD X Version 12.4 Build 52

Ch661/Area Scan (51x81x1): Measurement grid: dx=15mm, dy=15mm

Maximum value of SAR (interpolated) = 0.544 mW/g

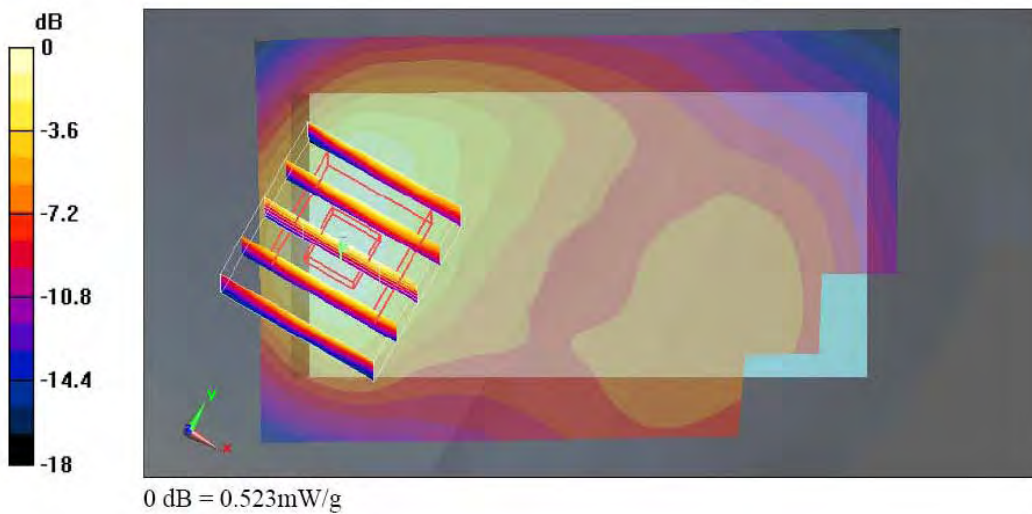
Ch661/Zoom Scan (5x5x7)/Cube 0: Measurement grid: dx=8mm, dy=8mm, dz=5mm

Reference Value = 20.5 V/m; Power Drift = -0.146 dB

Peak SAR (extrapolated) = 0.725 W/kg

SAR(1 g) = 0.465 mW/g; SAR(10 g) = 0.267 mW/g

Maximum value of SAR (measured) = 0.523 mW/g



Test Laboratory: Sporton International Inc. SAR/HAC Testing Lab

Date: 2008/6/14

Left Cheek_GSM1900 Ch661_Battery2_PDA2

DUT: 830416-03

Communication System: PCS; Frequency: 1880 MHz; Duty Cycle: 1:8.3

Medium: HSL_1900 Medium parameters used: $f = 1880$ MHz; $\sigma = 1.4$ mho/m; $\epsilon_r = 38.5$; $\rho = 1000$ kg/m³

Ambient Temperature : 22.5 °C; Liquid Temperature : 21.5 °C

DASY5 Configuration:

- Probe: ET3DV6 - SN1788; ConvF(5.28, 5.28, 5.28); Calibrated: 2007/9/26
- Sensor-Surface: 4mm (Mechanical Surface Detection)
- Electronics: DAE3 Sn577; Calibrated: 2007/11/16
- Phantom: SAM with CRP; Type: SAM; Serial: TP-1446
- Measurement SW: DASY5, V5.0 Build 91; SEMCAD X Version 12.4 Build 52

Ch661/Area Scan (51x81x1): Measurement grid: dx=15mm, dy=15mm

Maximum value of SAR (interpolated) = 0.895 mW/g

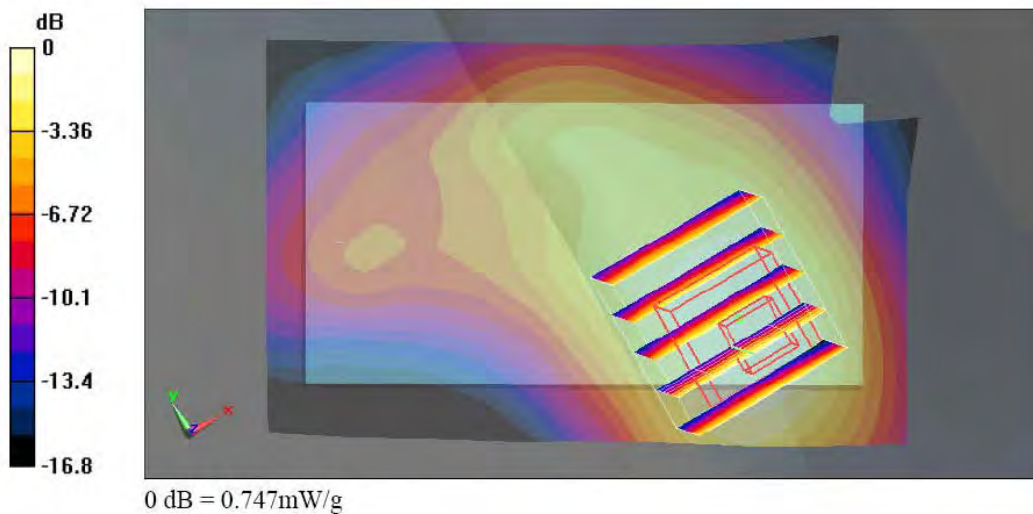
Ch661/Zoom Scan (5x5x7)/Cube 0: Measurement grid: dx=8mm, dy=8mm, dz=5mm

Reference Value = 11.4 V/m; Power Drift = -0.166 dB

Peak SAR (extrapolated) = 1.18 W/kg

SAR(1 g) = 0.694 mW/g; SAR(10 g) = 0.401 mW/g

Maximum value of SAR (measured) = 0.747 mW/g



Test Laboratory: Sporton International Inc. SAR/HAC Testing Lab

Date: 2008/6/14

Left Tilted_GSM1900 Ch661_Battery2_PDA2

DUT: 830416-03

Communication System: PCS; Frequency: 1880 MHz; Duty Cycle: 1:8.3

Medium: HSL_1900 Medium parameters used: $f = 1880 \text{ MHz}$; $\sigma = 1.4 \text{ mho/m}$; $\epsilon_r = 38.5$; $\rho = 1000 \text{ kg/m}^3$

Ambient Temperature : 22.5 °C; Liquid Temperature : 21.5 °C

DASY5 Configuration:

- Probe: ET3DV6 - SN1788; ConvF(5.28, 5.28, 5.28); Calibrated: 2007/9/26
- Sensor-Surface: 4mm (Mechanical Surface Detection)
- Electronics: DAE3 Sn577; Calibrated: 2007/11/16
- Phantom: SAM with CRP; Type: SAM; Serial: TP-1446
- Measurement SW: DASY5, V5.0 Build 91; SEMCAD X Version 12.4 Build 52

Ch661/Area Scan (51x81x1): Measurement grid: $dx=15\text{mm}$, $dy=15\text{mm}$

Maximum value of SAR (interpolated) = 0.477 mW/g

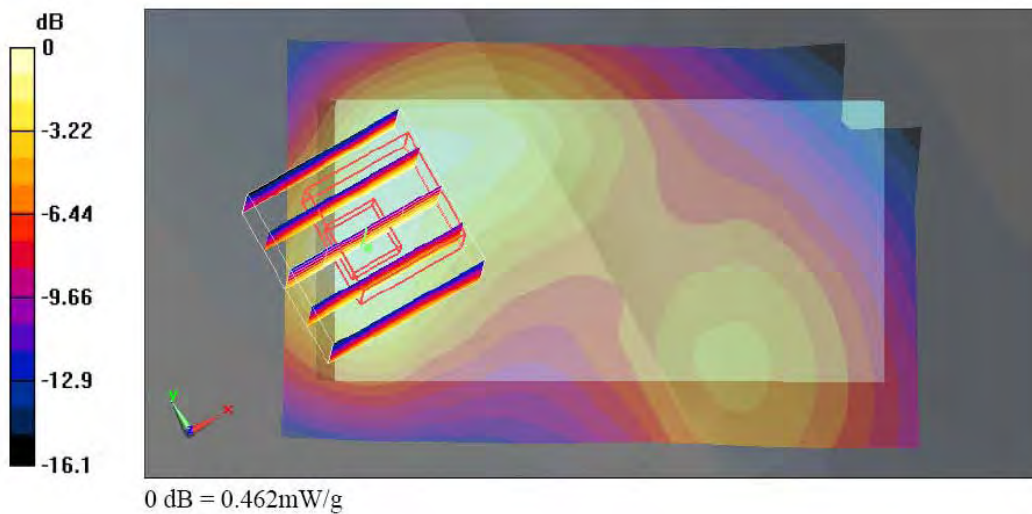
Ch661/Zoom Scan (5x5x7)/Cube 0: Measurement grid: $dx=8\text{mm}$, $dy=8\text{mm}$, $dz=5\text{mm}$

Reference Value = 18.8 V/m; Power Drift = 0.075 dB

Peak SAR (extrapolated) = 0.637 W/kg

SAR(1 g) = 0.411 mW/g; SAR(10 g) = 0.248 mW/g

Maximum value of SAR (measured) = 0.462 mW/g



Test Laboratory: Sporton International Inc. SAR/HAC Testing Lab

Date: 2008/6/14

Right Cheek_WCDMA850 Ch4182_Battery2_PDA2

DUT: 830416-03

Communication System: WCDMA; Frequency: 836.4 MHz; Duty Cycle: 1:1

Medium: HSL_850 Medium parameters used : $f = 836.4$ MHz; $\sigma = 0.909$ mho/m; $\epsilon_r = 40.6$; $\rho = 1000$ kg/m³

Ambient Temperature : 22.4 °C; Liquid Temperature : 21.8 °C

DASY5 Configuration:

- Probe: ET3DV6 - SN1788; ConvF(6.54, 6.54, 6.54); Calibrated: 2007/9/26
- Sensor-Surface: 4mm (Mechanical Surface Detection)
- Electronics: DAE3 Sn577; Calibrated: 2007/11/16
- Phantom: SAM-A; Type: QD 000 P40 C; Serial: TP-1303
- Measurement SW: DASY5, V5.0 Build 91; SEMCAD X Version 12.4 Build 52

Ch4182/Area Scan (51x81x1): Measurement grid: dx=15mm, dy=15mm

Maximum value of SAR (interpolated) = 0.273 mW/g

Ch4182/Zoom Scan (5x5x7)/Cube 1: Measurement grid: dx=8mm, dy=8mm, dz=5mm

Reference Value = 8.65 V/m; Power Drift = -0.066 dB

Peak SAR (extrapolated) = 0.384 W/kg

SAR(1 g) = 0.268 mW/g; SAR(10 g) = 0.189 mW/g

Maximum value of SAR (measured) = 0.284 mW/g

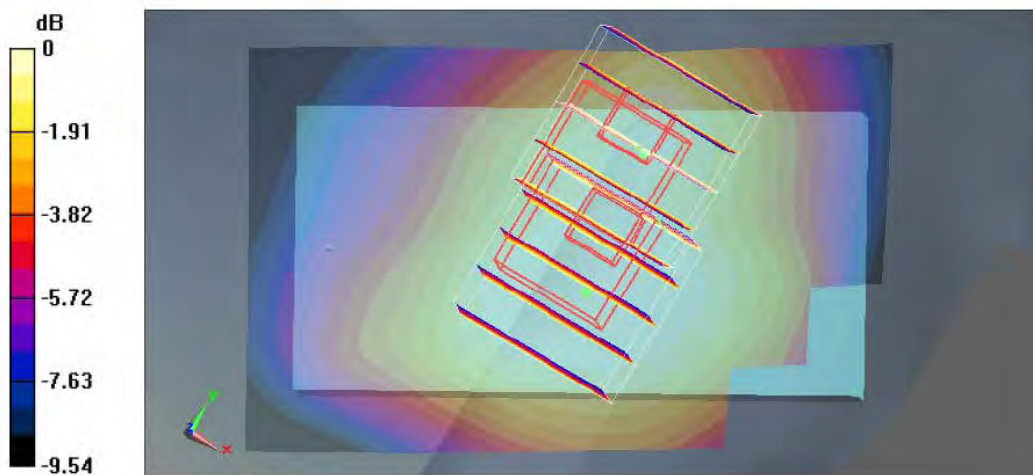
Ch4182/Zoom Scan (5x5x7)/Cube 0: Measurement grid: dx=8mm, dy=8mm, dz=5mm

Reference Value = 8.65 V/m; Power Drift = -0.066 dB

Peak SAR (extrapolated) = 0.261 W/kg

SAR(1 g) = 0.216 mW/g; SAR(10 g) = 0.165 mW/g

Maximum value of SAR (measured) = 0.237 mW/g



0 dB = 0.237mW/g

Test Laboratory: Sporton International Inc. SAR/HAC Testing Lab

Date: 2008/6/14

Right Tilted_WCDMA850 Ch4182_Battery2_PDA2

DUT: 830416-03

Communication System: WCDMA; Frequency: 836.4 MHz; Duty Cycle: 1:1

Medium: HSL_850 Medium parameters used : $f = 836.4$ MHz; $\sigma = 0.909$ mho/m; $\epsilon_r = 40.6$; $\rho = 1000$ kg/m³

Ambient Temperature : 22.3 °C ; Liquid Temperature : 21.8 °C

DASY5 Configuration:

- Probe: ET3DV6 - SN1788; ConvF(6.54, 6.54, 6.54); Calibrated: 2007/9/26
- Sensor-Surface: 4mm (Mechanical Surface Detection)
- Electronics: DAE3 Sn577; Calibrated: 2007/11/16
- Phantom: SAM-A; Type: QD 000 P40 C; Serial: TP-1303
- Measurement SW: DASY5, V5.0 Build 91; SEMCAD X Version 12.4 Build 52

Ch4182/Area Scan (51x81x1): Measurement grid: dx=15mm, dy=15mm

Maximum value of SAR (interpolated) = 0.258 mW/g

Ch4182/Zoom Scan (5x5x7)/Cube 0: Measurement grid: dx=8mm, dy=8mm, dz=5mm

Reference Value = 14.8 V/m; Power Drift = 0.033 dB

Peak SAR (extrapolated) = 0.311 W/kg

SAR(1 g) = 0.246 mW/g; SAR(10 g) = 0.184 mW/g

Maximum value of SAR (measured) = 0.260 mW/g

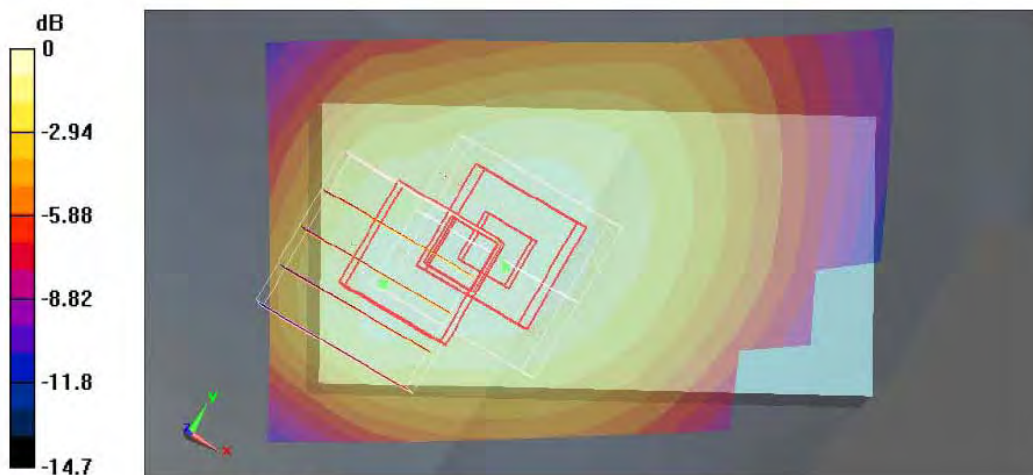
Ch4182/Zoom Scan (5x5x7)/Cube 1: Measurement grid: dx=8mm, dy=8mm, dz=5mm

Reference Value = 14.8 V/m; Power Drift = 0.033 dB

Peak SAR (extrapolated) = 0.480 W/kg

SAR(1 g) = 0.237 mW/g; SAR(10 g) = 0.165 mW/g

Maximum value of SAR (measured) = 0.262 mW/g



0 dB = 0.262mW/g

Test Laboratory: Sporton International Inc. SAR/HAC Testing Lab

Date: 2008/6/14

Left Cheek_WCDMA850 Ch4182_Battery2_PDA2

DUT: 830416-03

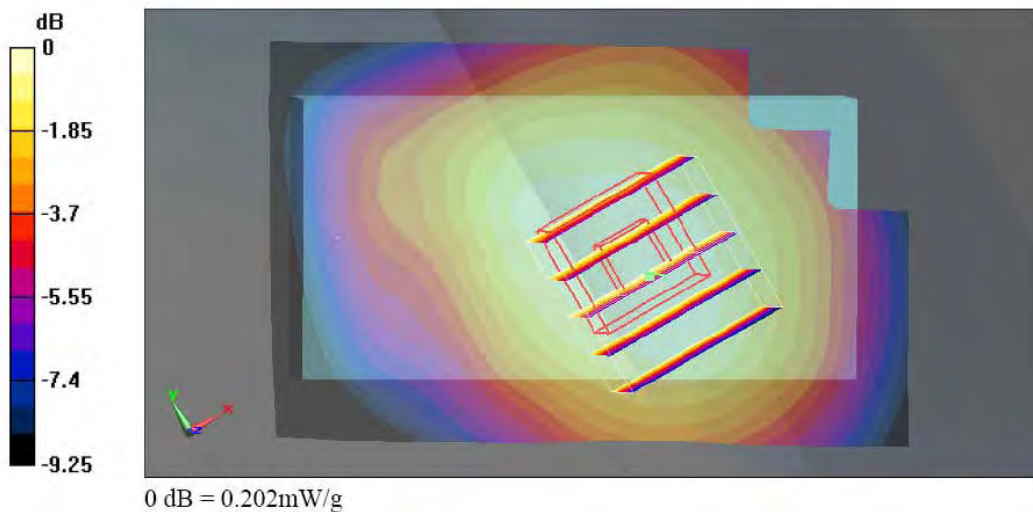
Communication System: WCDMA; Frequency: 836.4 MHz; Duty Cycle: 1:1
 Medium: HSL_850 Medium parameters used : f = 836.4 MHz; $\sigma = 0.909$ mho/m; $\epsilon_r = 40.6$; $\rho = 1000$ kg/m³
 Ambient Temperature : 22.3 °C ; Liquid Temperature : 21.8 °C

DASY5 Configuration:

- Probe: ET3DV6 - SN1788; ConvF(6.54, 6.54, 6.54); Calibrated: 2007/9/26
- Sensor-Surface: 4mm (Mechanical Surface Detection)
- Electronics: DAE3 Sn577; Calibrated: 2007/11/16
- Phantom: SAM-A; Type: QD 000 P40 C; Serial: TP-1303
- Measurement SW: DASY5, V5.0 Build 91; SEMCAD X Version 12.4 Build 52

Ch4182/Area Scan (51x81x1): Measurement grid: dx=15mm, dy=15mm
 Maximum value of SAR (interpolated) = 0.207 mW/g

Ch4182/Zoom Scan (5x5x7)/Cube 0: Measurement grid: dx=8mm, dy=8mm, dz=5mm
 Reference Value = 8.61 V/m; Power Drift = -0.133 dB
 Peak SAR (extrapolated) = 0.234 W/kg
SAR(1 g) = 0.194 mW/g; SAR(10 g) = 0.150 mW/g
 Maximum value of SAR (measured) = 0.202 mW/g



Test Laboratory: Sporton International Inc. SAR/HAC Testing Lab

Date: 2008/6/14

Left Tilted_WCDMA850 Ch4182_Battery2_PDA2

DUT: 830416-03

Communication System: WCDMA; Frequency: 836.4 MHz; Duty Cycle: 1:1
 Medium: HSL_850 Medium parameters used : f = 836.4 MHz; $\sigma = 0.909$ mho/m; $\epsilon_r = 40.6$; $\rho = 1000$ kg/m³
 Ambient Temperature : 22.3 °C ; Liquid Temperature : 21.8 °C

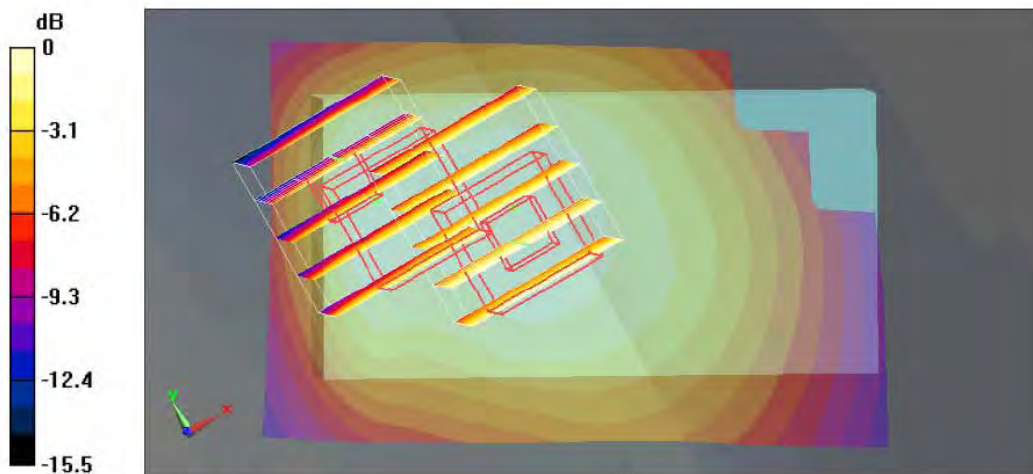
DASY5 Configuration:

- Probe: ET3DV6 - SN1788; ConvF(6.54, 6.54, 6.54); Calibrated: 2007/9/26
- Sensor-Surface: 4mm (Mechanical Surface Detection)
- Electronics: DAE3 Sn577; Calibrated: 2007/11/16
- Phantom: SAM-A; Type: QD 000 P40 C; Serial: TP-1303
- Measurement SW: DASY5, V5.0 Build 91; SEMCAD X Version 12.4 Build 52

Ch4182/Area Scan (51x81x1): Measurement grid: dx=15mm, dy=15mm
 Maximum value of SAR (interpolated) = 0.197 mW/g

Ch4182/Zoom Scan (5x5x7)/Cube 1: Measurement grid: dx=8mm, dy=8mm, dz=5mm
 Reference Value = 12.8 V/m; Power Drift = 0.148 dB
 Peak SAR (extrapolated) = 0.263 W/kg
SAR(1 g) = 0.211 mW/g; SAR(10 g) = 0.158 mW/g
 Maximum value of SAR (measured) = 0.222 mW/g

Ch4182/Zoom Scan (5x5x7)/Cube 0: Measurement grid: dx=8mm, dy=8mm, dz=5mm
 Reference Value = 12.8 V/m; Power Drift = 0.148 dB
 Peak SAR (extrapolated) = 0.368 W/kg
SAR(1 g) = 0.162 mW/g; SAR(10 g) = 0.108 mW/g
 Maximum value of SAR (measured) = 0.179 mW/g



0 dB = 0.179mW/g

Test Laboratory: Sporton International Inc. SAR/HAC Testing Lab

Date: 2008/6/14

Right Cheek_WCDMA1900 Ch9400_Battery2_PDA2

DUT: 830416-03

Communication System: WCDMA; Frequency: 1880 MHz; Duty Cycle: 1:1

Medium: HSL_1900 Medium parameters used: $f = 1880$ MHz; $\sigma = 1.4$ mho/m; $\epsilon_r = 38.5$; $\rho = 1000$ kg/m³

Ambient Temperature : 22.4 °C; Liquid Temperature : 21.5 °C

DASY5 Configuration:

- Probe: ET3DV6 - SN1788; ConvF(5.28, 5.28, 5.28); Calibrated: 2007/9/26
- Sensor-Surface: 4mm (Mechanical Surface Detection)
- Electronics: DAE3 Sn577; Calibrated: 2007/11/16
- Phantom: SAM with CRP; Type: SAM; Serial: TP-1446
- Measurement SW: DASY5, V5.0 Build 91; SEMCAD X Version 12.4 Build 52

Ch9400/Area Scan (51x81x1): Measurement grid: dx=15mm, dy=15mm

Maximum value of SAR (interpolated) = 0.981 mW/g

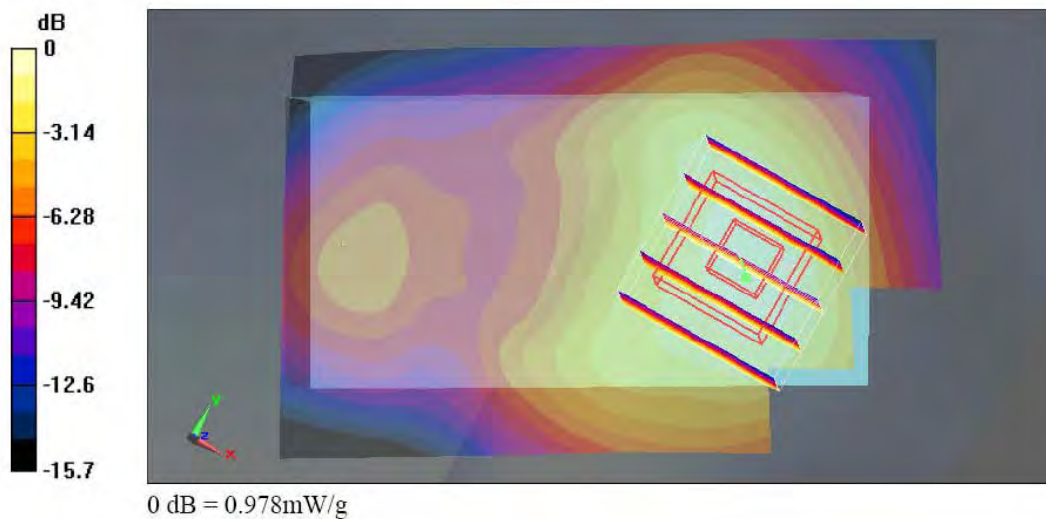
Ch9400/Zoom Scan (5x5x7)/Cube 0: Measurement grid: dx=8mm, dy=8mm, dz=5mm

Reference Value = 13.6 V/m; Power Drift = 0.104 dB

Peak SAR (extrapolated) = 1.25 W/kg

SAR(1 g) = 0.872 mW/g; SAR(10 g) = 0.547 mW/g

Maximum value of SAR (measured) = 0.978 mW/g



Test Laboratory: Sporton International Inc. SAR/HAC Testing Lab

Date: 2008/6/14

Right Tilted_WCDMA1900 Ch9400_Battery2_PDA2

DUT: 830416-03

Communication System: WCDMA; Frequency: 1880 MHz; Duty Cycle: 1:1

Medium: HSL_1900 Medium parameters used: $f = 1880$ MHz; $\sigma = 1.4$ mho/m; $\epsilon_r = 38.5$; $\rho = 1000$ kg/m³

Ambient Temperature : 22.4 °C; Liquid Temperature : 21.5 °C

DASY5 Configuration:

- Probe: ET3DV6 - SN1788; ConvF(5.28, 5.28, 5.28); Calibrated: 2007/9/26
- Sensor-Surface: 4mm (Mechanical Surface Detection)
- Electronics: DAE3 Sn577; Calibrated: 2007/11/16
- Phantom: SAM with CRP; Type: SAM; Serial: TP-1446
- Measurement SW: DASY5, V5.0 Build 91; SEMCAD X Version 12.4 Build 52

Ch9400/Area Scan (51x81x1): Measurement grid: dx=15mm, dy=15mm

Maximum value of SAR (interpolated) = 0.667 mW/g

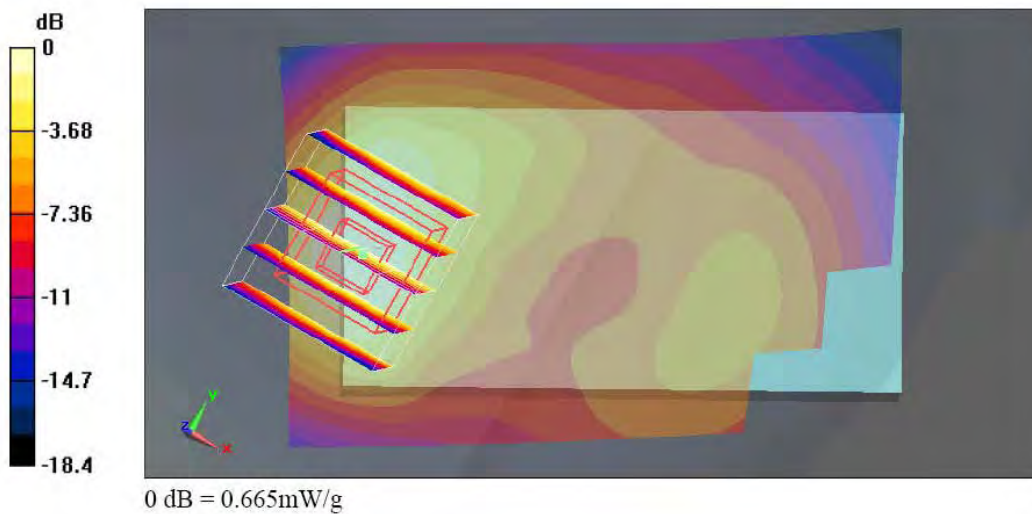
Ch9400/Zoom Scan (5x5x7)/Cube 0: Measurement grid: dx=8mm, dy=8mm, dz=5mm

Reference Value = 22.4 V/m; Power Drift = -0.077 dB

Peak SAR (extrapolated) = 0.923 W/kg

SAR(1 g) = 0.603 mW/g; SAR(10 g) = 0.352 mW/g

Maximum value of SAR (measured) = 0.665 mW/g



Test Laboratory: Sporton International Inc. SAR/HAC Testing Lab

Date: 2008/6/14

Left Cheek_WCDMA1900_Ch9400_Battery2_PDA2

DUT: 830416-03

Communication System: WCDMA; Frequency: 1880 MHz; Duty Cycle: 1:1

Medium: HSL_1900 Medium parameters used: $f = 1880$ MHz; $\sigma = 1.4$ mho/m; $\epsilon_r = 38.5$; $\rho = 1000$ kg/m³

Ambient Temperature : 22.4 °C; Liquid Temperature : 21.5 °C

DASY5 Configuration:

- Probe: ET3DV6 - SN1788; ConvF(5.28, 5.28, 5.28); Calibrated: 2007/9/26
- Sensor-Surface: 4mm (Mechanical Surface Detection)
- Electronics: DAE3 Sn577; Calibrated: 2007/11/16
- Phantom: SAM with CRP; Type: SAM; Serial: TP-1446
- Measurement SW: DASY5, V5.0 Build 91; SEMCAD X Version 12.4 Build 52

Ch9400/Area Scan (51x81x1): Measurement grid: dx=15mm, dy=15mm

Maximum value of SAR (interpolated) = 0.493 mW/g

Ch9400/Zoom Scan (5x5x7)/Cube 0: Measurement grid: dx=8mm, dy=8mm, dz=5mm

Reference Value = 9.95 V/m; Power Drift = -0.115 dB

Peak SAR (extrapolated) = 1.58 W/kg

SAR(1 g) = 0.611 mW/g; SAR(10 g) = 0.326 mW/g

Maximum value of SAR (measured) = 0.900 mW/g

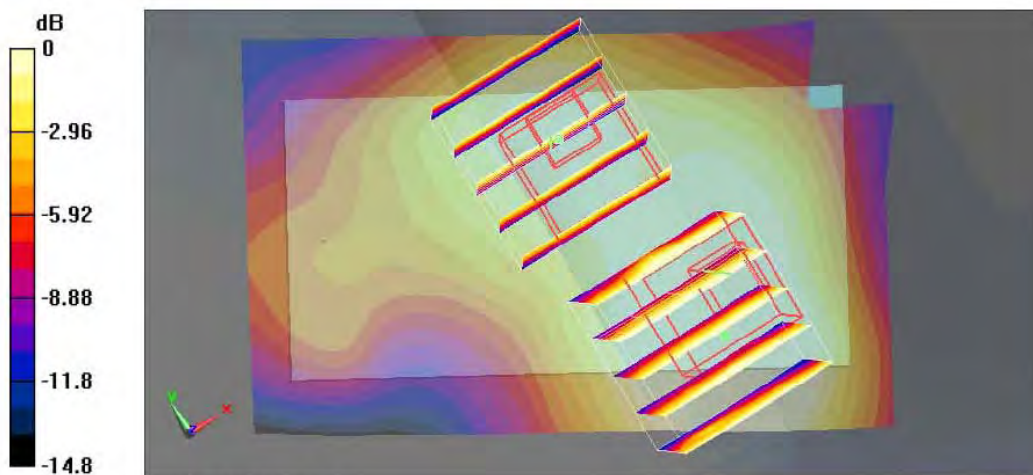
Ch9400/Zoom Scan (5x5x7)/Cube 1: Measurement grid: dx=8mm, dy=8mm, dz=5mm

Reference Value = 9.95 V/m; Power Drift = -0.115 dB

Peak SAR (extrapolated) = 0.440 W/kg

SAR(1 g) = 0.275 mW/g; SAR(10 g) = 0.181 mW/g

Maximum value of SAR (measured) = 0.295 mW/g



0 dB = 0.295mW/g

Test Laboratory: Sporton International Inc. SAR/HAC Testing Lab

Date: 2008/6/14

Left Tilted_WCDMA1900 Ch9400_Battery2_PDA2

DUT: 830416-03

Communication System: WCDMA; Frequency: 1880 MHz; Duty Cycle: 1:1

Medium: HSL_1900 Medium parameters used: $f = 1880$ MHz; $\sigma = 1.4$ mho/m; $\epsilon_r = 38.5$; $\rho = 1000$ kg/m³

Ambient Temperature : 22.5 °C; Liquid Temperature : 21.5 °C

DASY5 Configuration:

- Probe: ET3DV6 - SN1788; ConvF(5.28, 5.28, 5.28); Calibrated: 2007/9/26
- Sensor-Surface: 4mm (Mechanical Surface Detection)
- Electronics: DAE3 Sn577; Calibrated: 2007/11/16
- Phantom: SAM with CRP; Type: SAM; Serial: TP-1446
- Measurement SW: DASY5, V5.0 Build 91; SEMCAD X Version 12.4 Build 52

Ch9400/Area Scan (51x81x1): Measurement grid: dx=15mm, dy=15mm

Maximum value of SAR (interpolated) = 0.602 mW/g

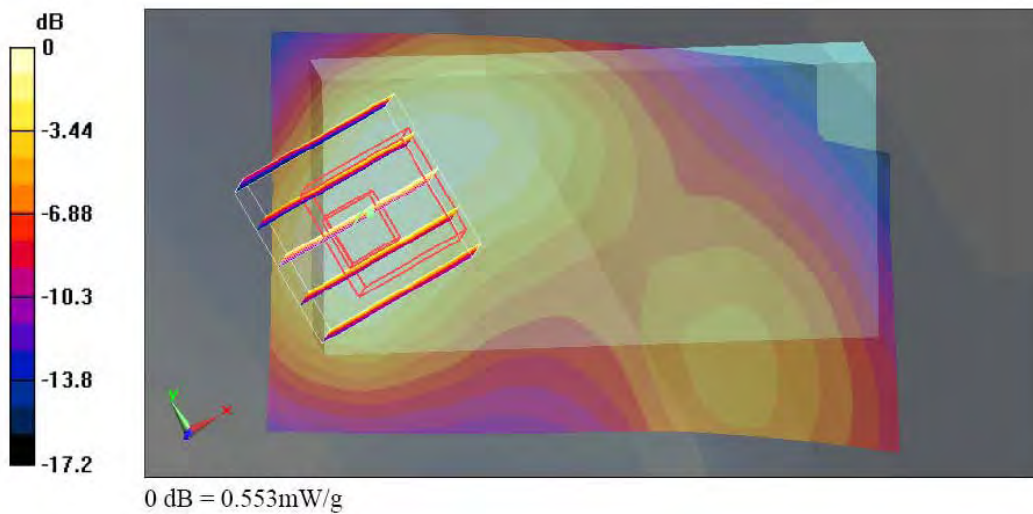
Ch9400/Zoom Scan (5x5x7)/Cube 0: Measurement grid: dx=8mm, dy=8mm, dz=5mm

Reference Value = 20.8 V/m; Power Drift = 0.159 dB

Peak SAR (extrapolated) = 0.777 W/kg

SAR(1 g) = 0.510 mW/g; SAR(10 g) = 0.315 mW/g

Maximum value of SAR (measured) = 0.553 mW/g



Test Laboratory: Sporton International Inc. SAR/HAC Testing Lab

Date: 2008/6/15

Body_GSM850 Ch189_Face With 1.5cm Gap_GPRS10_Earphone1_Battery1_PDA1

DUT: 830416-03

Communication System: GSM850; Frequency: 836.4 MHz; Duty Cycle: 1:4

Medium: MSL_850 Medium parameters used: $f = 836.4$ MHz; $\sigma = 0.962$ mho/m; $\epsilon_r = 56.3$; $\rho = 1000$ kg/m³

Ambient Temperature : 22.4 °C; Liquid Temperature : 21.6 °C

DASY5 Configuration:

- Probe: ET3DV6 - SN1788; ConvF(6.37, 6.37, 6.37); Calibrated: 2007/9/26
- Sensor-Surface: 4mm (Mechanical Surface Detection)
- Electronics: DAE3 Sn577; Calibrated: 2007/11/16
- Phantom: SAM-A; Type: QD 000 P40 C; Serial: TP-1303
- Measurement SW: DASY5, V5.0 Build 91; SEMCAD X Version 12.4 Build 52

Ch189/Area Scan (51x81x1): Measurement grid: dx=15mm, dy=15mm

Maximum value of SAR (interpolated) = 0.201 mW/g

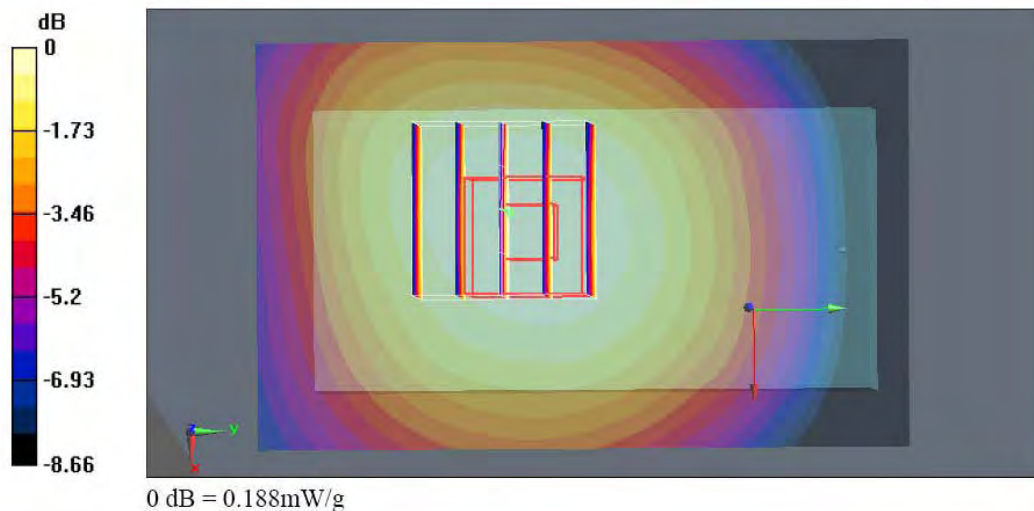
Ch189/Zoom Scan (5x5x7)/Cube 0: Measurement grid: dx=8mm, dy=8mm, dz=5mm

Reference Value = 6.62 V/m; Power Drift = -0.191 dB

Peak SAR (extrapolated) = 0.226 W/kg

SAR(1 g) = 0.181 mW/g; SAR(10 g) = 0.135 mW/g

Maximum value of SAR (measured) = 0.188 mW/g



Test Laboratory: Sporton International Inc. SAR/HAC Testing Lab

Date: 2008/6/15

Body_GSM850 Ch189_Bottom With 1.5cm Gap_GPRS10_Earphone1_Battery1_PDA1

DUT: 830416-03

Communication System: GSM850; Frequency: 836.4 MHz; Duty Cycle: 1:4

Medium: MSL_850 Medium parameters used: $f = 836.4$ MHz; $\sigma = 0.962$ mho/m; $\epsilon_r = 56.3$; $\rho = 1000$ kg/m³

Ambient Temperature : 22.4 °C; Liquid Temperature : 21.6 °C

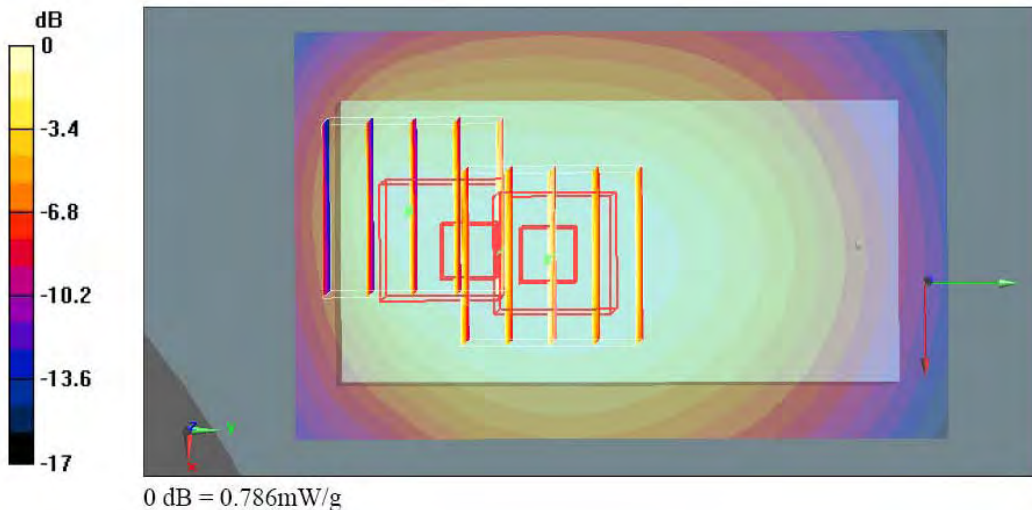
DASY5 Configuration:

- Probe: ET3DV6 - SN1788; ConvF(6.37, 6.37, 6.37); Calibrated: 2007/9/26
- Sensor-Surface: 4mm (Mechanical Surface Detection)
- Electronics: DAE3 Sn577; Calibrated: 2007/11/16
- Phantom: SAM-A; Type: QD 000 P40 C; Serial: TP-1303
- Measurement SW: DASY5, V5.0 Build 91; SEMCAD X Version 12.4 Build 52

Ch189/Area Scan (51x81x1): Measurement grid: dx=15mm, dy=15mm
 Maximum value of SAR (interpolated) = 0.837 mW/g

Ch189/Zoom Scan (5x5x7)/Cube 0: Measurement grid: dx=8mm, dy=8mm, dz=5mm
 Reference Value = 12 V/m; Power Drift = -0.122 dB
 Peak SAR (extrapolated) = 1.36 W/kg
SAR(1 g) = 0.788 mW/g; SAR(10 g) = 0.563 mW/g
 Maximum value of SAR (measured) = 0.836 mW/g

Ch189/Zoom Scan (5x5x7)/Cube 1: Measurement grid: dx=8mm, dy=8mm, dz=5mm
 Reference Value = 12 V/m; Power Drift = -0.122 dB
 Peak SAR (extrapolated) = 0.973 W/kg
SAR(1 g) = 0.706 mW/g; SAR(10 g) = 0.459 mW/g
 Maximum value of SAR (measured) = 0.786 mW/g



Test Laboratory: Sporton International Inc. SAR/HAC Testing Lab

Date: 2008/6/15

Body_GSM1900 Ch661_Face With 1.5cm Gap_GPRS10_Earphone1_Battery1_PDA1

DUT: 830416-03

Communication System: PCS; Frequency: 1880 MHz; Duty Cycle: 1:4

Medium: MSL_1900 Medium parameters used: $f = 1880$ MHz; $\sigma = 1.5$ mho/m; $\epsilon_r = 51.1$; $\rho = 1000$ kg/m³

Ambient Temperature : 22.5 °C; Liquid Temperature : 21.4 °C

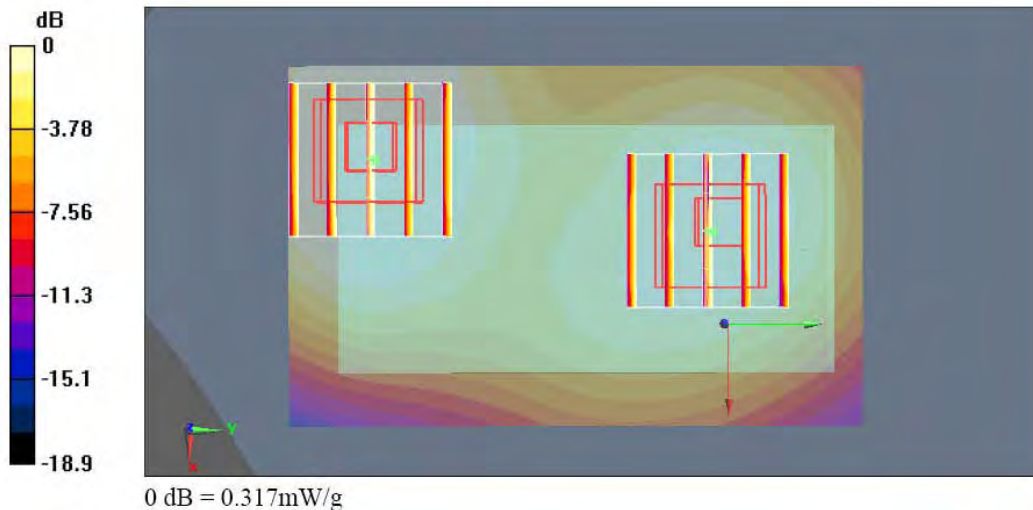
DASY5 Configuration:

- Probe: ET3DV6 - SN1788; ConvF(4.75, 4.75, 4.75); Calibrated: 2007/9/26
- Sensor-Surface: 4mm (Mechanical Surface Detection)
- Electronics: DAE3 Sn577; Calibrated: 2007/11/16
- Phantom: SAM with CRP; Type: SAM; Serial: TP-1446
- Measurement SW: DASY5, V5.0 Build 91; SEMCAD X Version 12.4 Build 52

Ch661/Area Scan (51x81x1): Measurement grid: dx=15mm, dy=15mm
 Maximum value of SAR (interpolated) = 0.445 mW/g

Ch661/Zoom Scan (5x5x7)/Cube 0: Measurement grid: dx=8mm, dy=8mm, dz=5mm
 Reference Value = 12.8 V/m; Power Drift = 0.124 dB
 Peak SAR (extrapolated) = 0.680 W/kg
SAR(1 g) = 0.434 mW/g; SAR(10 g) = 0.273 mW/g
 Maximum value of SAR (measured) = 0.461 mW/g

Ch661/Zoom Scan (5x5x7)/Cube 1: Measurement grid: dx=8mm, dy=8mm, dz=5mm
 Reference Value = 12.8 V/m; Power Drift = 0.124 dB
 Peak SAR (extrapolated) = 0.435 W/kg
SAR(1 g) = 0.299 mW/g; SAR(10 g) = 0.192 mW/g
 Maximum value of SAR (measured) = 0.317 mW/g



Test Laboratory: Sporton International Inc. SAR/HAC Testing Lab

Date: 2008/7/2

Body_GSM1900 Ch661_Bottom With 1.5cm Gap_GPRS10_Earphone1_Battery1_PDA1_New Cover

DUT: 830416-03

Communication System: PCS 1900; Frequency: 1880 MHz; Duty Cycle: 1:4

Medium: MSL_1900 Medium parameters used: $f = 1880$ MHz; $\sigma = 1.49$ mho/m; $\epsilon_r = 51.8$; $\rho = 1000$ kg/m³

Ambient Temperature : 22.5 °C; Liquid Temperature : 21.5 °C

DASY5 Configuration:

- Probe: ET3DV6 - SN1788; ConvF(4.75, 4.75, 4.75); Calibrated: 2007/9/26
- Sensor-Surface: 4mm (Mechanical Surface Detection)
- Electronics: DAE3 Sn577; Calibrated: 2007/11/16
- Phantom: SAM with CRP; Type: SAM; Serial: TP-1446
- Measurement SW: DASY5, V5.0 Build 91; SEMCAD X Version 12.4 Build 52

Ch661/Area Scan (51x81x1): Measurement grid: dx=15mm, dy=15mm

Maximum value of SAR (interpolated) = 1.52 mW/g

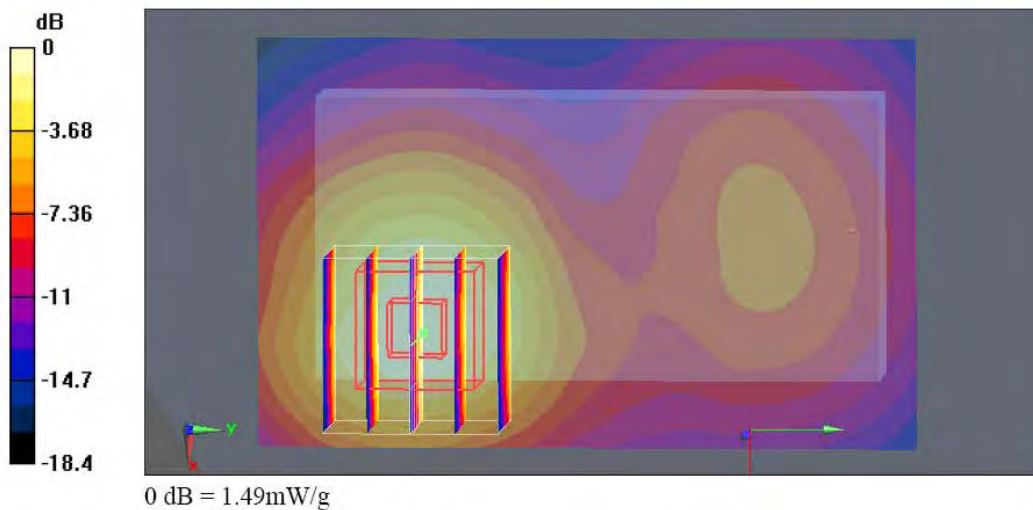
Ch661/Zoom Scan (5x5x7)/Cube 0: Measurement grid: dx=8mm, dy=8mm, dz=5mm

Reference Value = 13.8 V/m; Power Drift = -0.132 dB

Peak SAR (extrapolated) = 2.33 W/kg

SAR(1 g) = 1.34 mW/g; SAR(10 g) = 0.737 mW/g

Maximum value of SAR (measured) = 1.49 mW/g



Test Laboratory: Sporton International Inc. SAR/HAC Testing Lab

Date: 2008/6/15

Body_WCDMA850 Ch4182_Face With 1.5cm Gap_RMC12.2K_Earphone1_Battery1_PDA1

DUT: 830416-03

Communication System: WCDMA; Frequency: 836.4 MHz; Duty Cycle: 1:1

Medium: MSL_850 Medium parameters used: $f = 836.4 \text{ MHz}$; $\sigma = 0.962 \text{ mho/m}$; $\epsilon_r = 56.3$; $\rho = 1000 \text{ kg/m}^3$

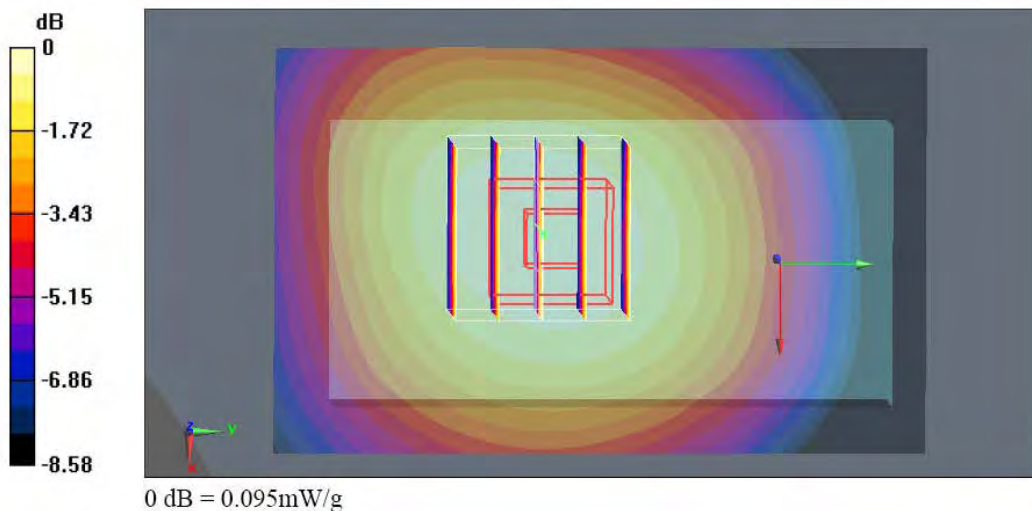
Ambient Temperature : 22.5 °C; Liquid Temperature : 21.6 °C

DASY5 Configuration:

- Probe: ET3DV6 - SN1788; ConvF(6.37, 6.37, 6.37); Calibrated: 2007/9/26
- Sensor-Surface: 4mm (Mechanical Surface Detection)
- Electronics: DAE3 Sn577; Calibrated: 2007/11/16
- Phantom: SAM-A; Type: QD 000 P40 C; Serial: TP-1303
- Measurement SW: DASY5, V5.0 Build 91; SEMCAD X Version 12.4 Build 52

Ch4182/Area Scan (51x81x1): Measurement grid: dx=15mm, dy=15mm
 Maximum value of SAR (interpolated) = 0.097 mW/g

Ch4182/Zoom Scan (5x5x7)/Cube 0: Measurement grid: dx=8mm, dy=8mm, dz=5mm
 Reference Value = 4.54 V/m; Power Drift = 0.075 dB
 Peak SAR (extrapolated) = 0.111 W/kg
SAR(1 g) = 0.090 mW/g; SAR(10 g) = 0.067 mW/g
 Maximum value of SAR (measured) = 0.095 mW/g



Test Laboratory: Sporton International Inc. SAR/HAC Testing Lab

Date: 2008/6/15

Body_WCDMA850 Ch4182_Bottom With 1.5cm Gap_RMC12.2K_Earphone1_Battery1_PDA1

DUT: 830416-03

Communication System: WCDMA; Frequency: 836.4 MHz; Duty Cycle: 1:1

Medium: MSL_850 Medium parameters used: $f = 836.4 \text{ MHz}$; $\sigma = 0.962 \text{ mho/m}$; $\epsilon_r = 56.3$; $\rho = 1000 \text{ kg/m}^3$

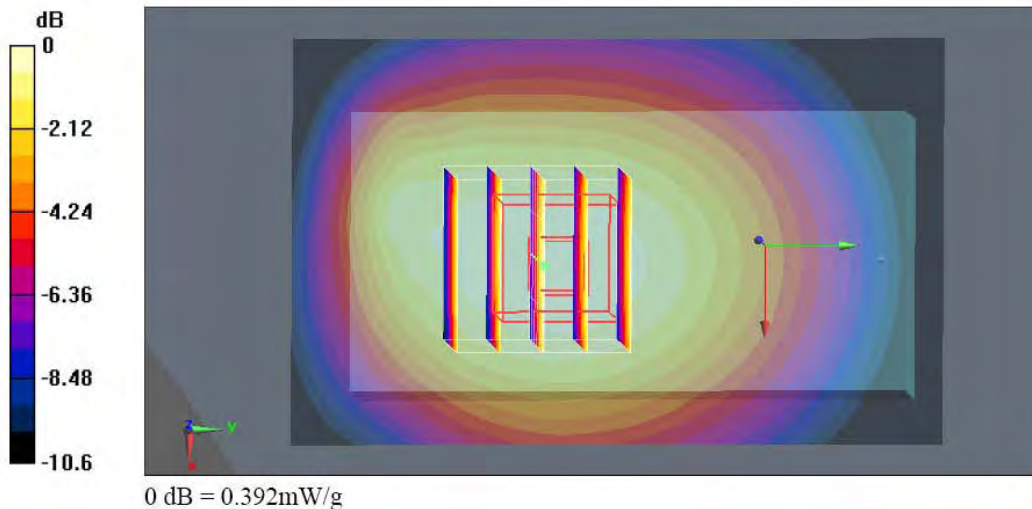
Ambient Temperature : 22.5 °C; Liquid Temperature : 21.6 °C

DASY5 Configuration:

- Probe: ET3DV6 - SN1788; ConvF(6.37, 6.37, 6.37); Calibrated: 2007/9/26
- Sensor-Surface: 4mm (Mechanical Surface Detection)
- Electronics: DAE3 Sn577; Calibrated: 2007/11/16
- Phantom: SAM-A; Type: QD 000 P40 C; Serial: TP-1303
- Measurement SW: DASY5, V5.0 Build 91; SEMCAD X Version 12.4 Build 52

Ch4182/Area Scan (51x81x1): Measurement grid: dx=15mm, dy=15mm
 Maximum value of SAR (interpolated) = 0.393 mW/g

Ch4182/Zoom Scan (5x5x7)/Cube 0: Measurement grid: dx=8mm, dy=8mm, dz=5mm
 Reference Value = 8.6 V/m; Power Drift = 0.058 dB
 Peak SAR (extrapolated) = 0.480 W/kg
SAR(1 g) = 0.370 mW/g; SAR(10 g) = 0.266 mW/g
 Maximum value of SAR (measured) = 0.392 mW/g



Test Laboratory: Sporton International Inc. SAR/HAC Testing Lab

Date: 2008/6/15

Body_WCDMA1900_Ch9400_Face With 1.5cm Gap_RMC12.2K_Earphone1_Battery1_PDA1

DUT: 830416-03

Communication System: WCDMA Band 2; Frequency: 1880 MHz; Duty Cycle: 1:1

Medium: MSL_1900 Medium parameters used: $f = 1880$ MHz; $\sigma = 1.5$ mho/m; $\epsilon_r = 51.1$; $\rho = 1000$ kg/m³

Ambient Temperature : 22.4 °C; Liquid Temperature : 21.4 °C

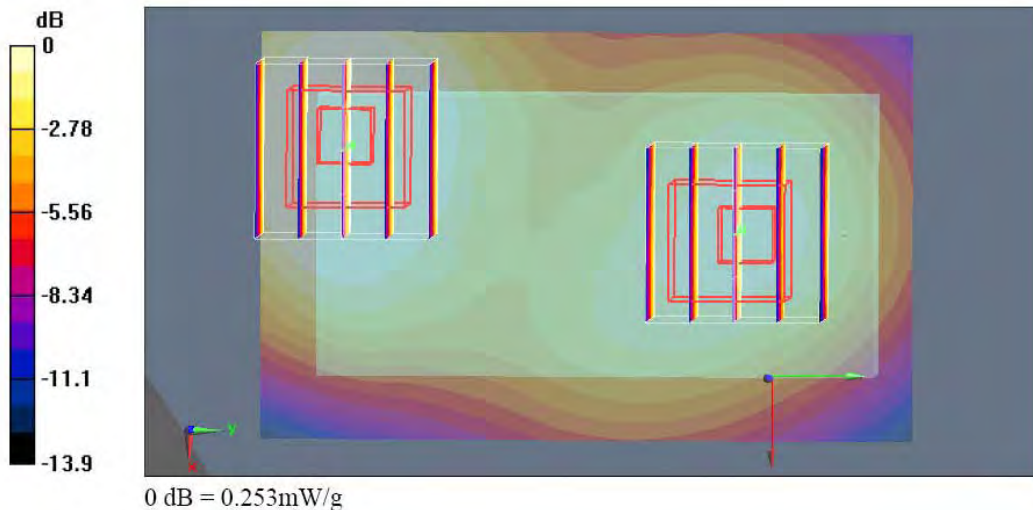
DASY5 Configuration:

- Probe: ET3DV6 - SN1788; ConvF(4.75, 4.75, 4.75); Calibrated: 2007/9/26
- Sensor-Surface: 4mm (Mechanical Surface Detection)
- Electronics: DAE3 Sn577; Calibrated: 2007/11/16
- Phantom: SAM with CRP; Type: SAM; Serial: TP-1446
- Measurement SW: DASY5, V5.0 Build 91; SEMCAD X Version 12.4 Build 52

Ch9400/Area Scan (51x81x1): Measurement grid: dx=15mm, dy=15mm
 Maximum value of SAR (interpolated) = 0.341 mW/g

Ch9400/Zoom Scan (5x5x7)/Cube 0: Measurement grid: dx=8mm, dy=8mm, dz=5mm
 Reference Value = 8.25 V/m; Power Drift = 0.109 dB
 Peak SAR (extrapolated) = 0.506 W/kg
SAR(1 g) = 0.324 mW/g; SAR(10 g) = 0.205 mW/g
 Maximum value of SAR (measured) = 0.345 mW/g

Ch9400/Zoom Scan (5x5x7)/Cube 1: Measurement grid: dx=8mm, dy=8mm, dz=5mm
 Reference Value = 8.25 V/m; Power Drift = 0.109 dB
 Peak SAR (extrapolated) = 0.343 W/kg
SAR(1 g) = 0.235 mW/g; SAR(10 g) = 0.154 mW/g
 Maximum value of SAR (measured) = 0.253 mW/g



Test Laboratory: Sporton International Inc. SAR/HAC Testing Lab

Date: 2008/6/15

Body_WCDMA1900_Ch9400_Bottom With 1.5cm Gap_RMC12.2K_Earphone1_Battery1_PDA1

DUT: 830416-03

Communication System: WCDMA Band 2; Frequency: 1880 MHz; Duty Cycle: 1:1

Medium: MSL_1900 Medium parameters used: $f = 1880$ MHz; $\sigma = 1.5$ mho/m; $\epsilon_r = 51.1$; $\rho = 1000$ kg/m³

Ambient Temperature : 22.6 °C; Liquid Temperature : 21.4 °C

DASY5 Configuration:

- Probe: ET3DV6 - SN1788; ConvF(4.75, 4.75, 4.75); Calibrated: 2007/9/26
- Sensor-Surface: 4mm (Mechanical Surface Detection)
- Electronics: DAE3 Sn577; Calibrated: 2007/11/16
- Phantom: SAM with CRP; Type: SAM; Serial: TP-1446
- Measurement SW: DASY5, V5.0 Build 91; SEMCAD X Version 12.4 Build 52

Ch9400/Area Scan (51x81x1): Measurement grid: dx=15mm, dy=15mm

Maximum value of SAR (interpolated) = 1.05 mW/g

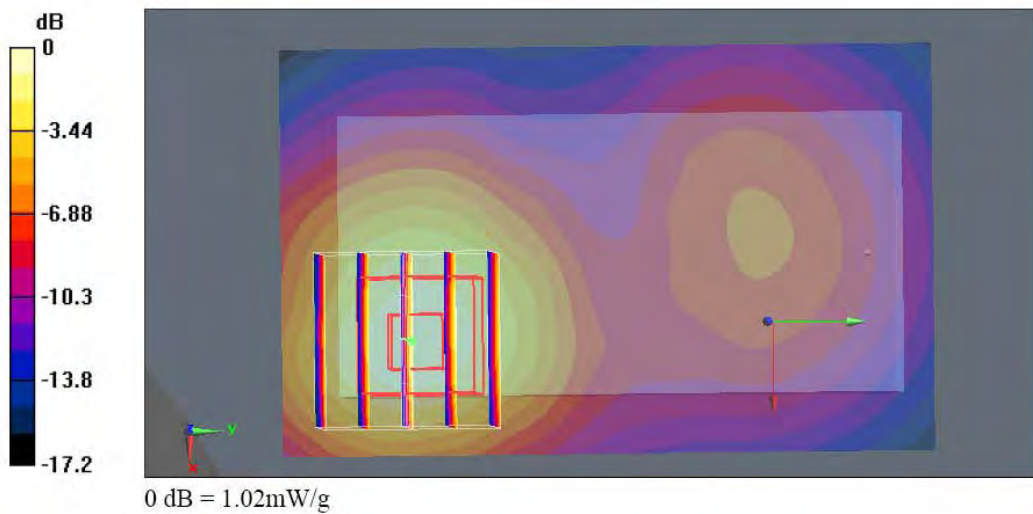
Ch9400/Zoom Scan (5x5x7)/Cube 0: Measurement grid: dx=8mm, dy=8mm, dz=5mm

Reference Value = 10.6 V/m; Power Drift = -0.0019 dB

Peak SAR (extrapolated) = 1.51 W/kg

SAR(1 g) = 0.918 mW/g; SAR(10 g) = 0.522 mW/g

Maximum value of SAR (measured) = 1.02 mW/g





Test Laboratory: Sporton International Inc. SAR/HAC Testing Lab

Date: 2008/6/14

Right Cheek_GSM850 Ch189_Battery2_PDA2_2D

DUT: 830416-03

Communication System: GSM850; Frequency: 836.4 MHz; Duty Cycle: 1:8.3

Medium: HSL_850 Medium parameters used : $f = 836.4$ MHz; $\sigma = 0.909$ mho/m; $\epsilon_r = 40.6$; $\rho = 1000$ kg/m³

Ambient Temperature : 22.3 °C; Liquid Temperature : 21.8 °C

DASY5 Configuration:

- Probe: ET3DV6 - SN1788; ConvF(6.54, 6.54, 6.54); Calibrated: 2007/9/26
- Sensor-Surface: 4mm (Mechanical Surface Detection)
- Electronics: DAE3 Sn577; Calibrated: 2007/11/16
- Phantom: SAM-A; Type: QD 000 P40 C; Serial: TP-1303
- Measurement SW: DASY5, V5.0 Build 91; SEMCAD X Version 12.4 Build 52

Ch189/Area Scan (51x81x1): Measurement grid: dx=15mm, dy=15mm

Maximum value of SAR (interpolated) = 0.388 mW/g

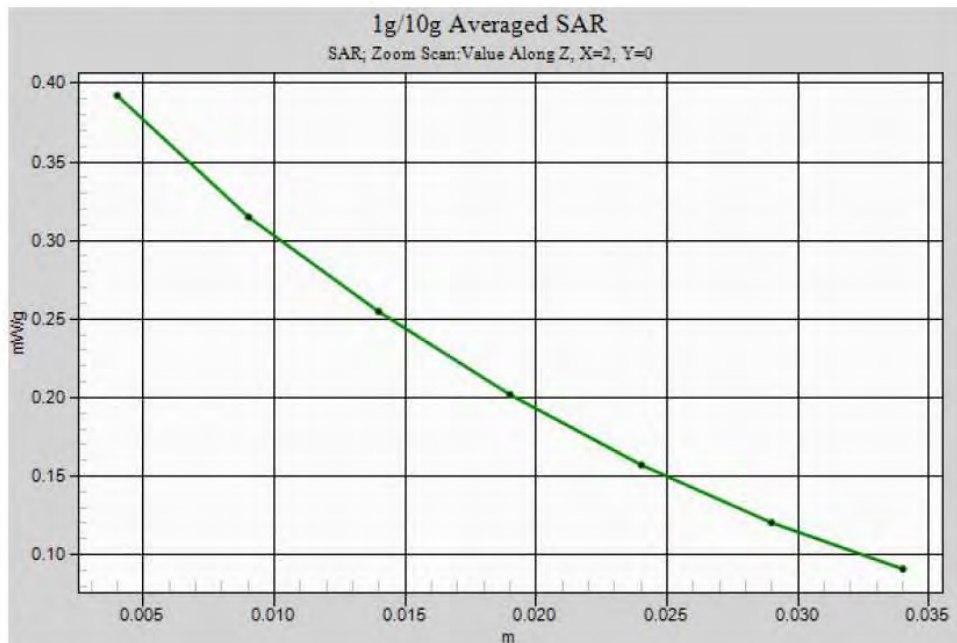
Ch189/Zoom Scan (5x5x7)/Cube 0: Measurement grid: dx=8mm, dy=8mm, dz=5mm

Reference Value = 8.94 V/m; Power Drift = -0.127 dB

Peak SAR (extrapolated) = 0.494 W/kg

SAR(1 g) = 0.371 mW/g; SAR(10 g) = 0.269 mW/g

Maximum value of SAR (measured) = 0.392 mW/g





Test Laboratory: Sporton International Inc. SAR/HAC Testing Lab

Date: 2008/6/14

Left Cheek_GSM1900 Ch661_Battery2_PDA2_2D

DUT: 830416-03

Communication System: PCS; Frequency: 1880 MHz; Duty Cycle: 1:8.3

Medium: HSL_1900 Medium parameters used: $f = 1880$ MHz; $\sigma = 1.4$ mho/m; $\epsilon_r = 38.5$; $\rho = 1000$ kg/m³

Ambient Temperature : 22.5 °C; Liquid Temperature : 21.5 °C

DASY5 Configuration:

- Probe: ET3DV6 - SN1788; ConvF(5.28, 5.28, 5.28); Calibrated: 2007/9/26
- Sensor-Surface: 4mm (Mechanical Surface Detection)
- Electronics: DAE3 Sn577; Calibrated: 2007/11/16
- Phantom: SAM with CRP; Type: SAM; Serial: TP-1446
- Measurement SW: DASY5, V5.0 Build 91; SEMCAD X Version 12.4 Build 52

Ch661/Area Scan (51x81x1): Measurement grid: dx=15mm, dy=15mm

Maximum value of SAR (interpolated) = 0.895 mW/g

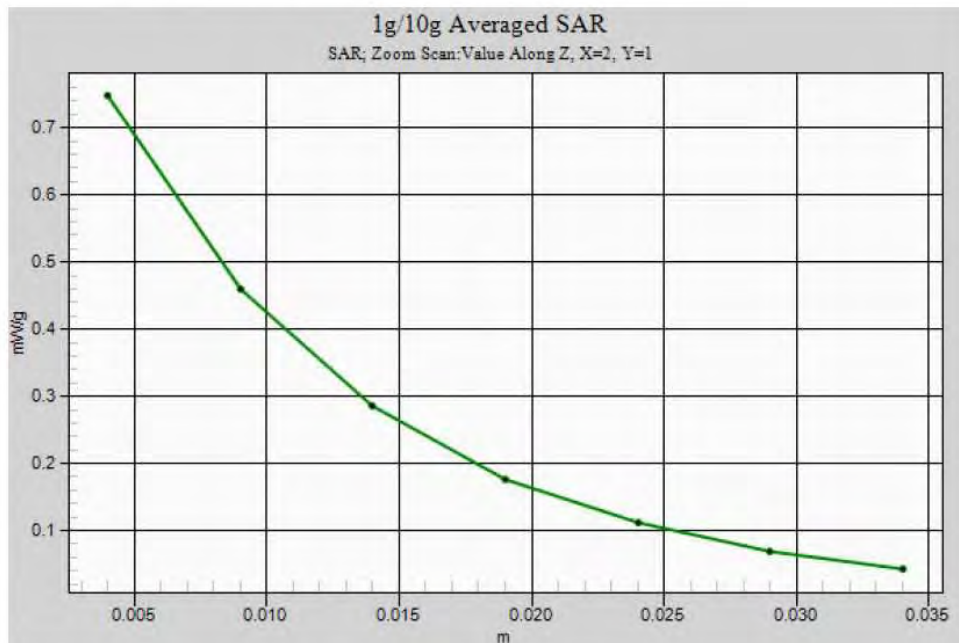
Ch661/Zoom Scan (5x5x7)/Cube 0: Measurement grid: dx=8mm, dy=8mm, dz=5mm

Reference Value = 11.4 V/m; Power Drift = -0.166 dB

Peak SAR (extrapolated) = 1.18 W/kg

SAR(1 g) = 0.694 mW/g; SAR(10 g) = 0.401 mW/g

Maximum value of SAR (measured) = 0.747 mW/g





Test Laboratory: Sporton International Inc. SAR/HAC Testing Lab

Date: 2008/6/14

Right Cheek_WCDMA850 Ch4182_Battery2_PDA2_2D

DUT: 830416-03

Communication System: WCDMA; Frequency: 836.4 MHz; Duty Cycle: 1:1

Medium: HSL_850 Medium parameters used : $f = 836.4$ MHz; $\sigma = 0.909$ mho/m; $\epsilon_r = 40.6$; $\rho = 1000$ kg/m³

Ambient Temperature : 22.4 °C; Liquid Temperature : 21.8 °C

DASY5 Configuration:

- Probe: ET3DV6 - SN1788; ConvF(6.54, 6.54, 6.54); Calibrated: 2007/9/26
- Sensor-Surface: 4mm (Mechanical Surface Detection)
- Electronics: DAE3 Sn577; Calibrated: 2007/11/16
- Phantom: SAM-A; Type: QD 000 P40 C; Serial: TP-1303
- Measurement SW: DASY5, V5.0 Build 91; SEMCAD X Version 12.4 Build 52

Ch4182/Area Scan (51x81x1): Measurement grid: dx=15mm, dy=15mm

Maximum value of SAR (interpolated) = 0.273 mW/g

Ch4182/Zoom Scan (5x5x7)/Cube 1: Measurement grid: dx=8mm, dy=8mm, dz=5mm

Reference Value = 8.65 V/m; Power Drift = -0.066 dB

Peak SAR (extrapolated) = 0.384 W/kg

SAR(1 g) = 0.268 mW/g; SAR(10 g) = 0.189 mW/g

Maximum value of SAR (measured) = 0.284 mW/g

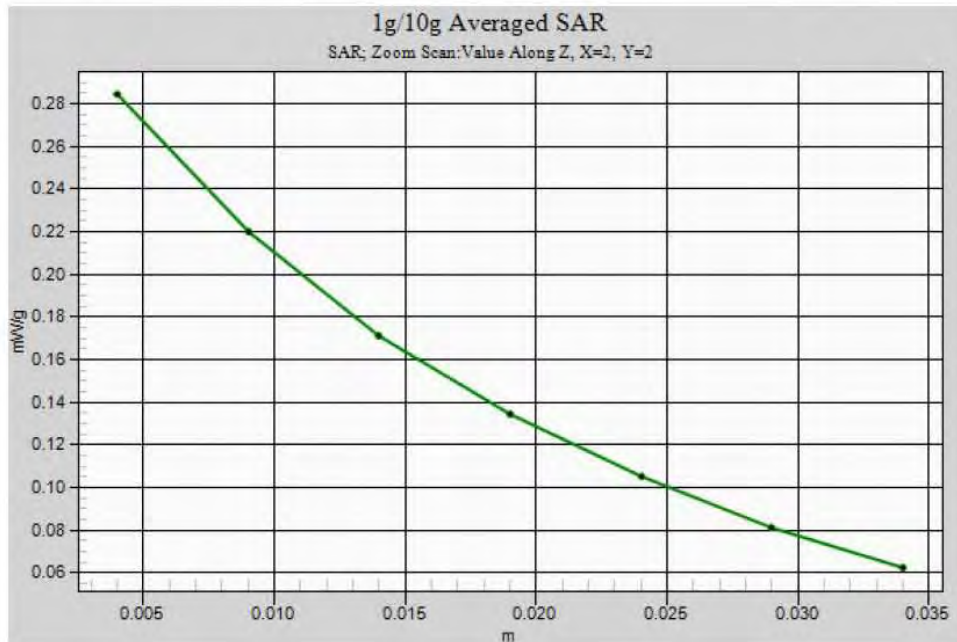
Ch4182/Zoom Scan (5x5x7)/Cube 0: Measurement grid: dx=8mm, dy=8mm, dz=5mm

Reference Value = 8.65 V/m; Power Drift = -0.066 dB

Peak SAR (extrapolated) = 0.261 W/kg

SAR(1 g) = 0.216 mW/g; SAR(10 g) = 0.165 mW/g

Maximum value of SAR (measured) = 0.237 mW/g





Test Laboratory: Sporton International Inc. SAR/HAC Testing Lab

Date: 2008/6/14

Right Cheek_WCDMA1900 Ch9400_Battery2_PDA2_2D

DUT: 830416-03

Communication System: WCDMA; Frequency: 1880 MHz; Duty Cycle: 1:1

Medium: HSL_1900 Medium parameters used: $f = 1880$ MHz; $\sigma = 1.4$ mho/m; $\epsilon_r = 38.5$; $\rho = 1000$ kg/m³

Ambient Temperature : 22.4 °C; Liquid Temperature : 21.5 °C

DASY5 Configuration:

- Probe: ET3DV6 - SN1788; ConvF(5.28, 5.28, 5.28); Calibrated: 2007/9/26
- Sensor-Surface: 4mm (Mechanical Surface Detection)
- Electronics: DAE3 Sn577; Calibrated: 2007/11/16
- Phantom: SAM with CRP; Type: SAM; Serial: TP-1446
- Measurement SW: DASY5, V5.0 Build 91; SEMCAD X Version 12.4 Build 52

Ch9400/Area Scan (51x81x1): Measurement grid: dx=15mm, dy=15mm

Maximum value of SAR (interpolated) = 0.981 mW/g

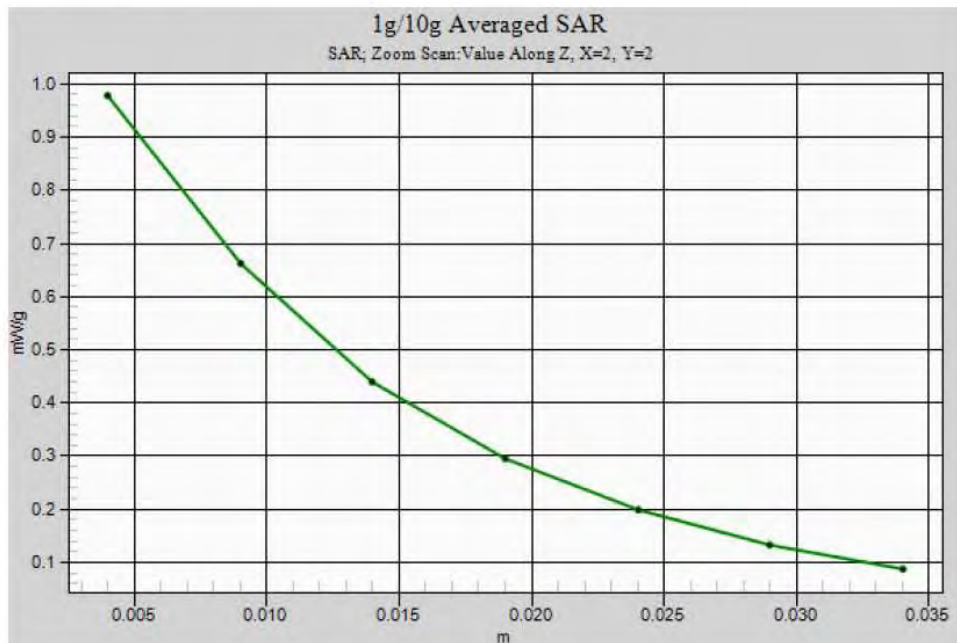
Ch9400/Zoom Scan (5x5x7)/Cube 0: Measurement grid: dx=8mm, dy=8mm, dz=5mm

Reference Value = 13.6 V/m; Power Drift = 0.104 dB

Peak SAR (extrapolated) = 1.25 W/kg

SAR(1 g) = 0.872 mW/g; SAR(10 g) = 0.547 mW/g

Maximum value of SAR (measured) = 0.978 mW/g





Test Laboratory: Sporton International Inc. SAR/HAC Testing Lab

Date: 2008/6/15

Body_GSM850 Ch189_Bottom With 1.5cm Gap_GPRS10_Earphone1_Battery1_PDA1_2D

DUT: 830416-03

Communication System: GSM850; Frequency: 836.4 MHz; Duty Cycle: 1:4

Medium: MSL_850 Medium parameters used: $f = 836.4$ MHz; $\sigma = 0.962$ mho/m; $\epsilon_r = 56.3$; $\rho = 1000$ kg/m³

Ambient Temperature : 22.4 °C; Liquid Temperature : 22.6 °C

DASY5 Configuration:

- Probe: ET3DV6 - SN1788; ConvF(6.37, 6.37, 6.37); Calibrated: 2007/9/26
- Sensor-Surface: 4mm (Mechanical Surface Detection)
- Electronics: DAE3 Sn577; Calibrated: 2007/11/16
- Phantom: SAM-A; Type: QD 000 P40 C; Serial: TP-1303
- Measurement SW: DASY5, V5.0 Build 91; SEMCAD X Version 12.4 Build 52

Ch189/Area Scan (51x81x1): Measurement grid: dx=15mm, dy=15mm

Maximum value of SAR (interpolated) = 0.837 mW/g

Ch189/Zoom Scan (5x5x7)/Cube 0: Measurement grid: dx=8mm, dy=8mm, dz=5mm

Reference Value = 12 V/m; Power Drift = -0.122 dB

Peak SAR (extrapolated) = 1.36 W/kg

SAR(1 g) = 0.788 mW/g; SAR(10 g) = 0.563 mW/g

Maximum value of SAR (measured) = 0.836 mW/g

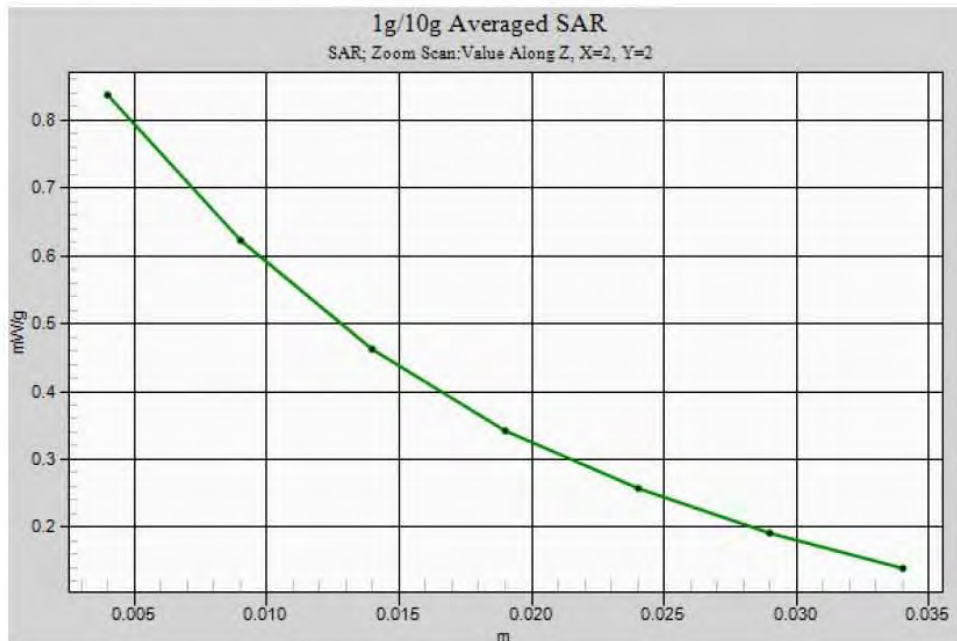
Ch189/Zoom Scan (5x5x7)/Cube 1: Measurement grid: dx=8mm, dy=8mm, dz=5mm

Reference Value = 12 V/m; Power Drift = -0.122 dB

Peak SAR (extrapolated) = 0.973 W/kg

SAR(1 g) = 0.706 mW/g; SAR(10 g) = 0.459 mW/g

Maximum value of SAR (measured) = 0.786 mW/g





Test Laboratory: Sporton International Inc. SAR/HAC Testing Lab

Date: 2008/7/2

Body_GSM1900 Ch661_Bottom With 1.5cm Gap_GPRS10_Earphone1_Battery1_PDA1_New Cover_2D

DUT: 830416-03

Communication System: PCS 1900; Frequency: 1880 MHz; Duty Cycle: 1:4

Medium: MSL_1900 Medium parameters used: $f = 1880$ MHz; $\sigma = 1.49$ mho/m; $\epsilon_r = 51.8$; $\rho = 1000$ kg/m³

Ambient Temperature : 22.5 °C; Liquid Temperature : 21.5 °C

DASY5 Configuration:

- Probe: ET3DV6 - SN1788; ConvF(4.75, 4.75, 4.75); Calibrated: 2007/9/26
- Sensor-Surface: 4mm (Mechanical Surface Detection)
- Electronics: DAE3 Sn577; Calibrated: 2007/11/16
- Phantom: SAM with CRP; Type: SAM; Serial: TP-1446
- Measurement SW: DASY5, V5.0 Build 91; SEMCAD X Version 12.4 Build 52

Ch661/Area Scan (51x81x1): Measurement grid: dx=15mm, dy=15mm

Maximum value of SAR (interpolated) = 1.52 mW/g

Ch661/Zoom Scan (5x5x7)/Cube 0: Measurement grid: dx=8mm, dy=8mm, dz=5mm

Reference Value = 13.8 V/m; Power Drift = -0.132 dB

Peak SAR (extrapolated) = 2.33 W/kg

SAR(1 g) = 1.34 mW/g; SAR(10 g) = 0.737 mW/g

Maximum value of SAR (measured) = 1.49 mW/g

