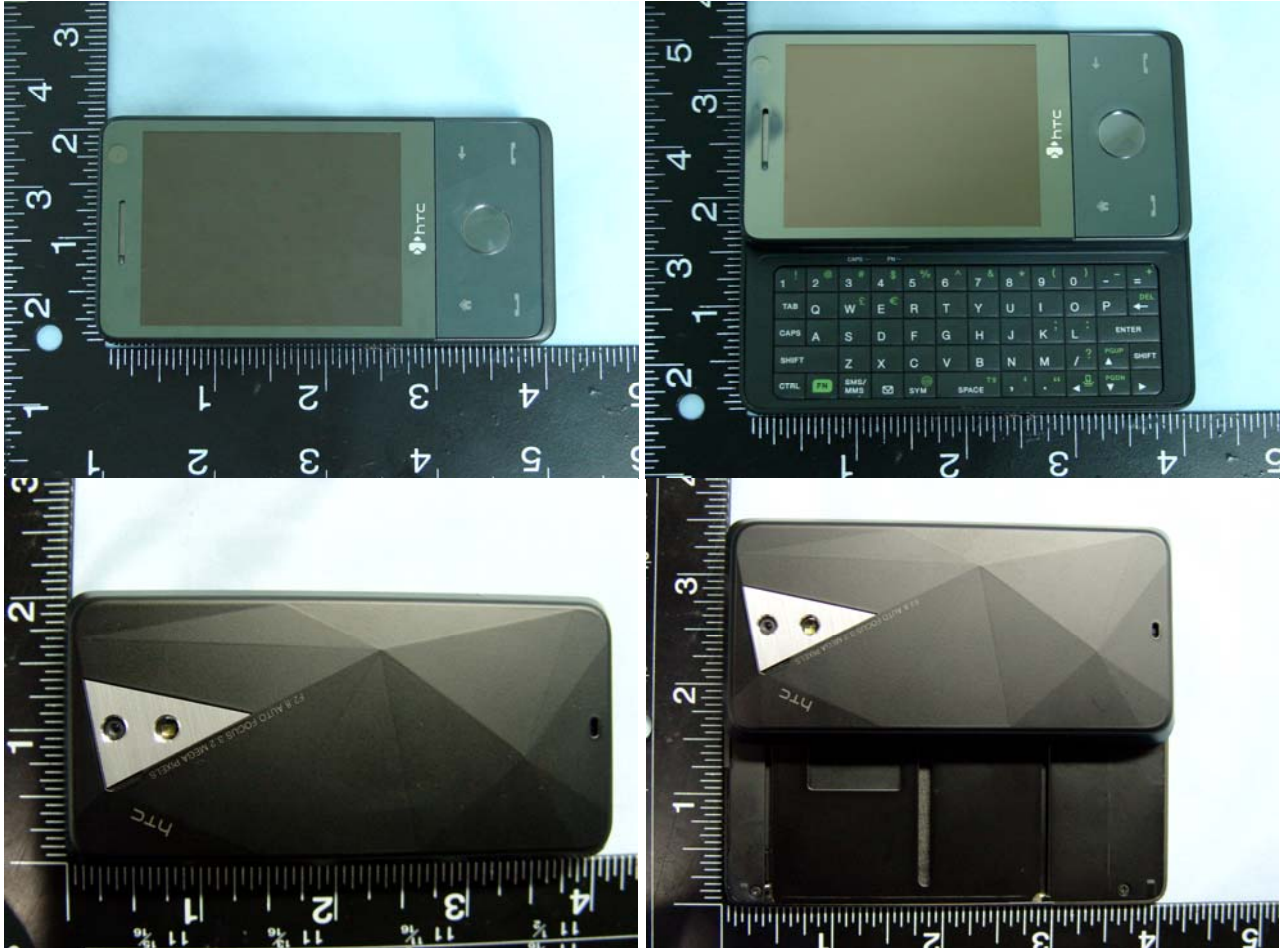
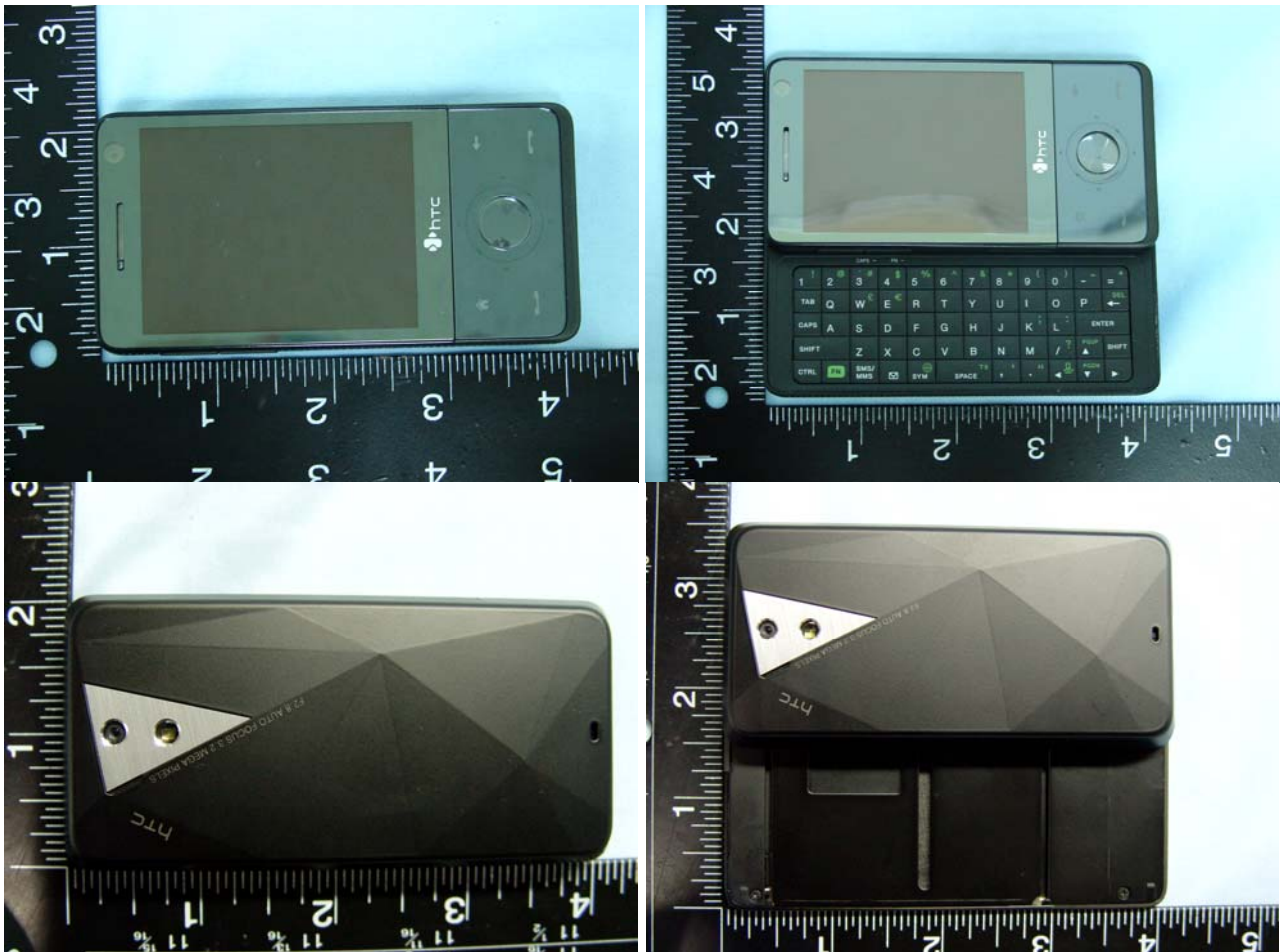


Appendix D - Product Photos

PDA Phone 1 :



PDA Phone 2 :



**Earphone 1 :**



**Earphone 2 :**

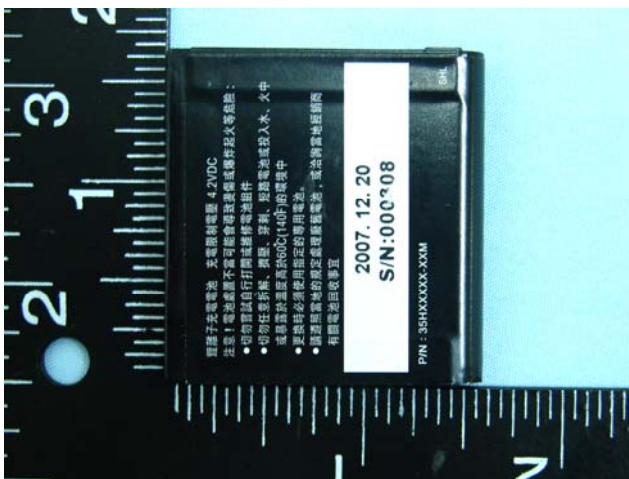




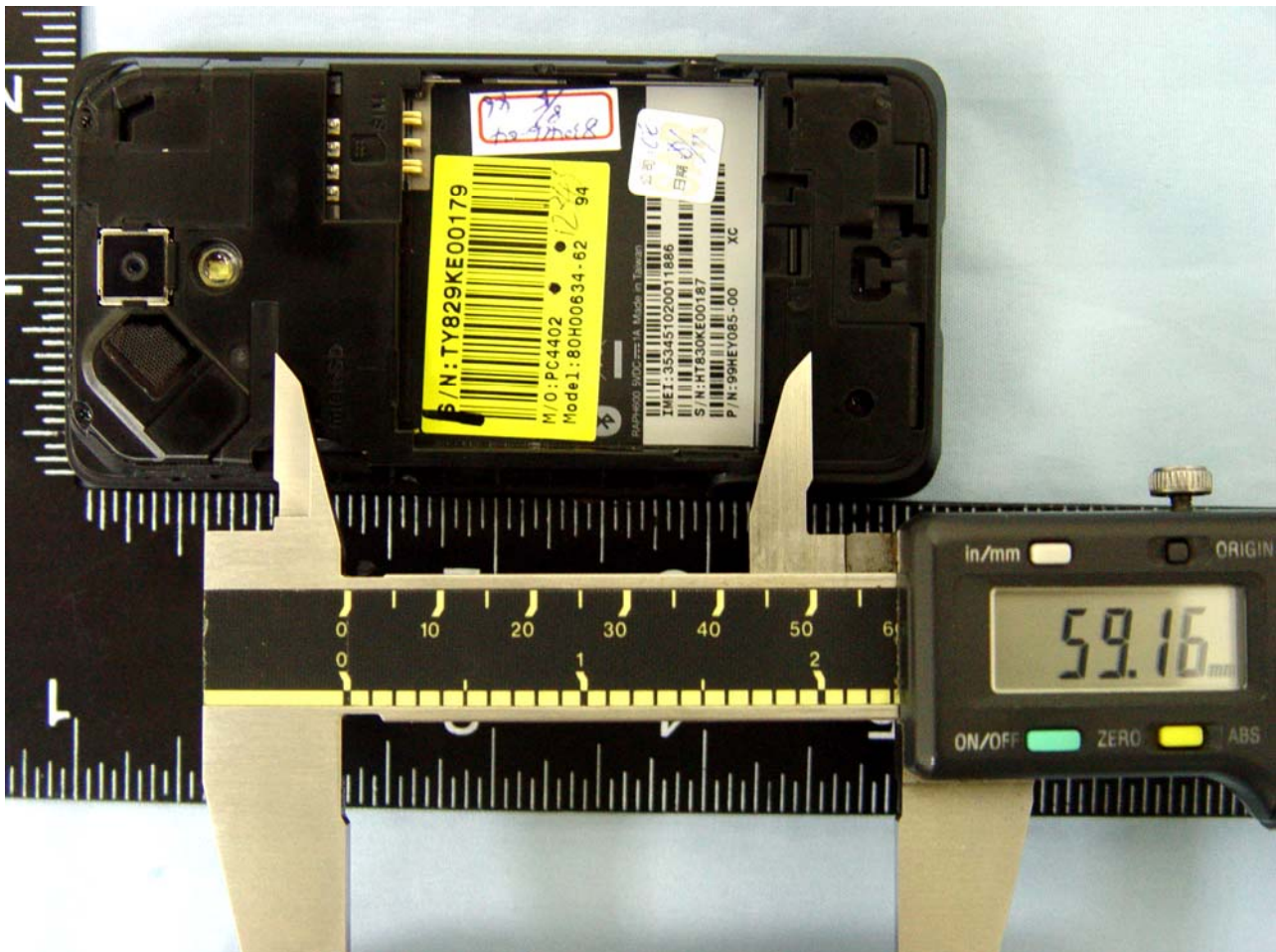
Battery 1 :



Battery 2 :



Antenna Distance :



Component Model		
<b>AC Adapter 1</b>	<b>Brand Name</b>	PHIHONG
	<b>Model Name</b>	PSAA05X-050 (X=A, C, E, K, or S)
	<b>Power Rating</b>	I/P: 100-240Vac, 50-60Hz, 200mA; O/P: 5Vdc, 1A
	<b>AC Power Cord Type</b>	1.8 meter shielded cable without ferrite core
<b>AC Adapter 2</b>	<b>Brand Name</b>	DELTA
	<b>Model Name</b>	ADP-5FH X (X=A, B, C, D, or E)
	<b>Power Rating</b>	I/P: 100-240Vac, 50-60Hz, 0.2A; O/P: 5Vdc, 1A
	<b>AC Power Cord Type</b>	1.8 meter shielded cable without ferrite core
<b>AC Adapter 3</b>	<b>Manufacturer</b>	DELTA
	<b>Brand Name</b>	hTC
	<b>Model Name</b>	TC P300
	<b>Power Rating</b>	I/P: 100-240Vac, 50-60Hz, 0.2A; O/P: 5Vdc, 1A
<b>AC Adapter 4</b>	<b>Brand Name</b>	DELTA
	<b>Model Name</b>	EADP-5GB X (X=A, B, C, D, or E)
	<b>Power Rating</b>	I/P: 100-240Vac, 50-60Hz, 0.2A; O/P: 5Vdc, 1A
	<b>AC Power Cord Type</b>	1.8 meter non-shielded cable without ferrite core
<b>Car Charger</b>	<b>Brand Name</b>	Phihong
	<b>Model Name</b>	CLA05D-050A
	<b>P/N</b>	CC L120
	<b>Power Rating</b>	I/P: 10-30V, 0.65A; O/P: 5Vdc, 1A
	<b>Power Cord Type</b>	1.8 meter shielded cable without ferrite core
<b>Battery 1</b>	<b>Manufacturer</b>	Total Wireless Solutions (Macao Commercial Offshore) Limited (TWS)
	<b>Brand Name</b>	hTC
	<b>Model Name</b>	DIAM171
	<b>Power Rating</b>	3.7Vdc, 1340mAh
	<b>Type</b>	Li-ion
<b>Battery 2</b>	<b>Manufacturer</b>	SIMPLO TECHNOLOGY CO., LTD.
	<b>Brand Name</b>	hTC
	<b>Model Name</b>	DIAM171
	<b>Power Rating</b>	3.7Vdc, 1340mAh
	<b>Type</b>	Li-ion
<b>Earphone 1</b>	<b>Brand Name</b>	COTRON
	<b>Model Name</b>	HS S200
	<b>Signal Line Type</b>	1.6 meter shielded cable without ferrite core

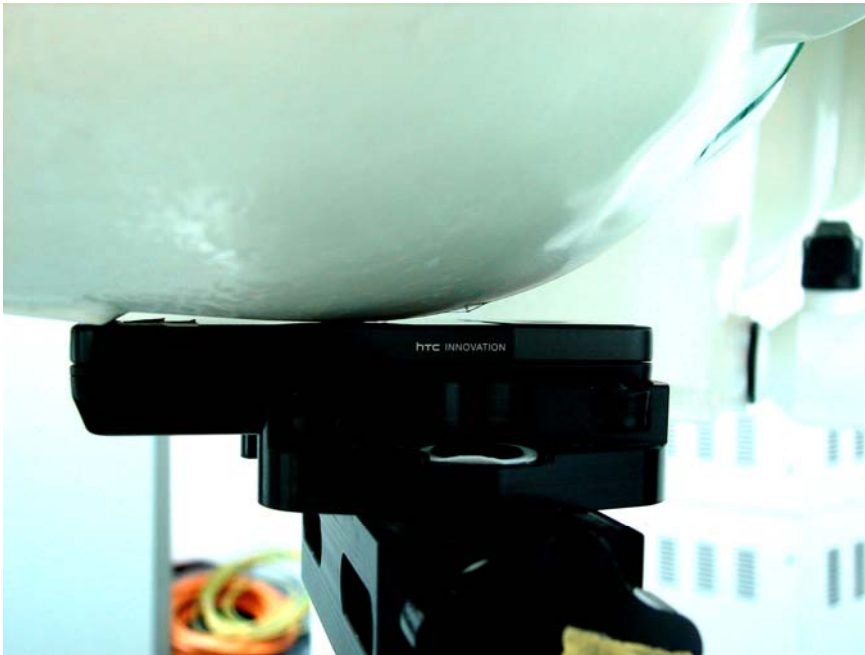
<b>Earphone 2</b>	<b>Brand Name</b>	COTRON
	<b>Model Name</b>	HS S300
	<b>Signal Line Type</b>	1.6 meter shielded cable without ferrite core
<b>USB Cable 1</b>	<b>Brand Name</b>	MEC
	<b>Model Name</b>	DC U300
	<b>Signal Line Type</b>	1.2 meter shielded cable without ferrite core
<b>USB Cable 2</b>	<b>Brand Name</b>	MEC
	<b>Model Name</b>	DC U100
	<b>Signal Line Type</b>	1.2 meter shielded cable without ferrite core
<b>4 in 1 Cable</b>	<b>Brand Name</b>	MEC
	<b>Model Name</b>	YC A200
<b>LCD Panel</b>	<b>Brand Name</b>	Hitachi
	<b>Model Name</b>	DX07D05VM0AAA
<b>Photo Camera 1</b>	<b>Brand Name</b>	Foxccon
	<b>Model Name</b>	CMHT-3A403D
<b>Photo Camera 2</b>	<b>Brand Name</b>	LITEON
	<b>Model Name</b>	07PM12
<b>Video Camera 1</b>	<b>Brand Name</b>	LITEON
	<b>Model Name</b>	07PC03
<b>Video Camera 2</b>	<b>Brand Name</b>	Foxccon
	<b>Model Name</b>	CMHT-00400D
<b>Pouch 1</b>	<b>Brand Name</b>	XIGMA
	<b>Model Name</b>	PO S400
<b>Pouch 2</b>	<b>Brand Name</b>	XIGMA
	<b>Model Name</b>	PO S320

**Remark:**

1. PSAA05X-050 (X=A, C, E, K or S) have the same circuit design. The difference between these models is plug, only PSAA05A-05 was used for the test.
2. ADP-5FH X (X=A, B, C, D or E) have the same circuit design. The difference between these models is plug, only ADP-5FH B was used for the test.
3. EADP-5GB X (X=A, B, C, D, or E) have the same circuit design. The difference between these models is plug, only EADP-5GB B was used for the test.
4. TC P300 has some different plug such as US, EU, UK, AS and CN, only US used for testing.
5. The pouch is dust cover and its function is to protect the mobile phone. The pouch is without any clasps, so it can not be carried.
6. Above EUT's information was declared by manufacturer. Please refer to the specifications of manufacturer or User's Manual for more detailed features description.



**Appendix E - Test Setup Photos**



**Right Cheek with DUT Slide Off**



**Right Tilted with DUT Slide Off**





**Left Cheek with DUT Slide Off**



**Left Cheek with DUT Slide Right**



**Left Tilted with DUT Slide Off**



**Face with 1.5cm Gap with DUT Slide Off + Earphone 1**



**Bottom with 1.5cm Gap with DUT Slide Off + Earphone 1**



**Bottom with 1.5cm Gap with DUT Slide Off + Earphone 2**



**Bottom with 1.5cm Gap with DUT Slide Right + Earphone 1**